

Parts List for:

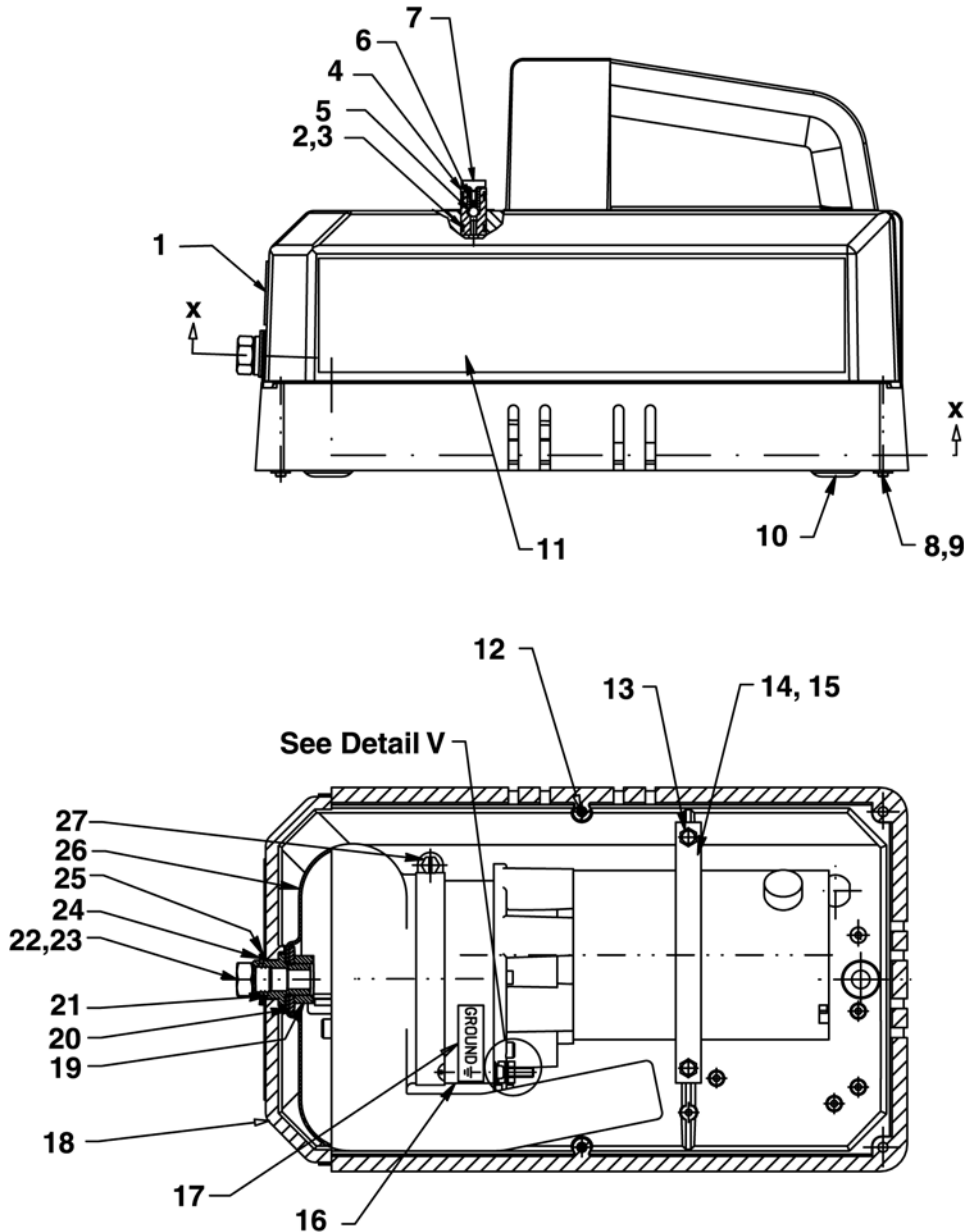
PE102-220DC

PE102-115DC

Internet Address:  
<http://www.powerteam.com>

**MODEL D**  
**ELECTRIC HYDRAULIC PUMP**  
Max. Capacity: 10,000 PSI

To Parts  
List



# Parts List, Form No. 1000014, Back sheet 1 of 6

Item No.	Part No.	No. Req'd	Description
1	<b>*251072</b>	1	Warning & Fill Instructions Decal
2	<b>*11863</b>	2	Backup Washer (.50 x .38)
3	<b>*10268</b>	2	O-ring (.50 x .37 Nitrile)
	<b>†17716</b>	2	O-ring (.50 x .37 EPR)
4	<b>*251128</b>	1	Bushing
5	<b>12223</b>	1	Ball, 3/16" Dia. Steel
6	<b>10445</b>	1	Spring, (.16 OD x .72 x .01 WS)
7	<b>209795</b>	1	Stop, Outlet Ball
8	<b>12515</b>	4	Machine Screw (10-24 x 1 3/4)
9	<b>*207405</b>	4	Locknut (10-24)
10	<b>420607</b>	1	Base Plate
11	<b>350672</b>	2	Decal, Trade Name Power Team
12	<b>14456</b>	2	Screw (10-24 x 1/2; Place ground wire terminal between cover & housing.)
13	<b>211060</b>	2	Screw (9-15 x 1)
14	<b>251039</b>	.5 ft.	Motor Mounting Strap
15	<b>251041</b>	3"	Channel Rubber
16	<b>65725-110</b>	1	Pump, Basic (For PE102-115DC)
	<b>65725-220</b>	1	Pump, Basic (For PE102-220DC)

Item No.	Part No.	No. Req'd	Description
17	<b>205189</b>	1	Decal, Label Ground
18	<b>64363</b>	1	Plastic Housing
19	<b>10394</b>	1	Hex Nut (5/8-18)
20	<b>13324</b>	1	Washer (1.33 x .66)
21	<b>350583</b>	1	Filler Adapter
22	<b>*13755</b>	1	O-ring (.55 x .41 Nitrile)
	<b>†251035</b>	1	O-ring (.55 x .41 EPR)
23	<b>251280</b>	1	O-ring Boss Plug
24	<b>251043</b>	1	Retaining Ring
25	<b>201373</b>	1	Retainer Washer
26	<b>420643</b>	1	Bladder
	<b>†420736</b>	1	Bladder
27	<b>350305</b>	1	Hose Clamp

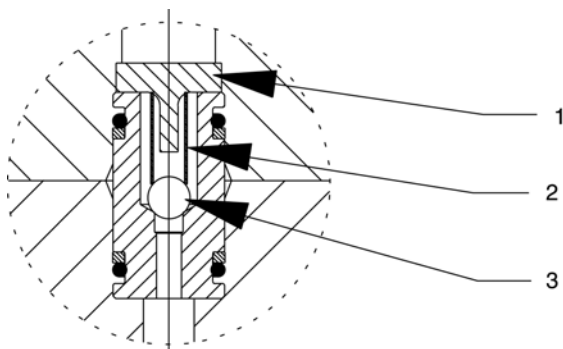
## OTHER OPTIONS AND ACCESSORIES

**350720** 1 Manifold



Part numbers marked with an asterisk (\*) are contained in Repair Kit No. 300651.  
Part numbers marked with a dagger (†) are contained in EPR Seal Kit No. 300653.

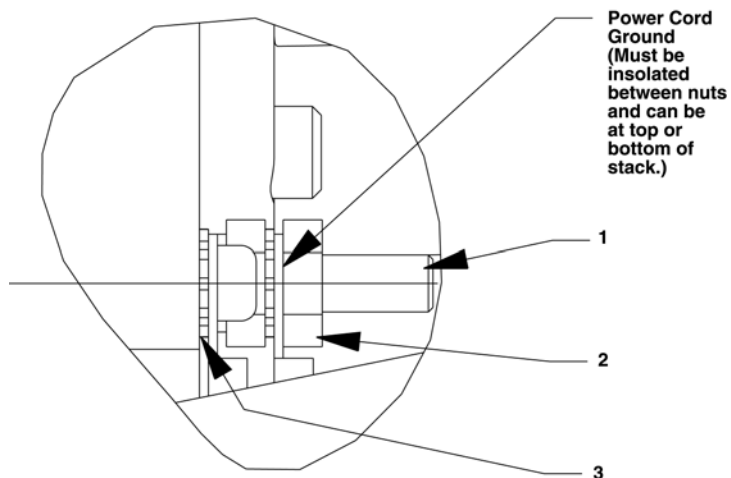
## DETAIL FOR 2-WAY VALVE OUTLET CHECK



Item No.	Part No.	No. Req'd	Description
1	209795	1	Outlet Ball Stop
2	*10445	1	Compression Spring (5/32 O.D. X 3/4 Lg.)
3	*12223	1	Ball (3/16 Dia.)

Part numbers marked with an asterisk (\*) are contained in Repair Kit No. 300653.

## DETAIL V

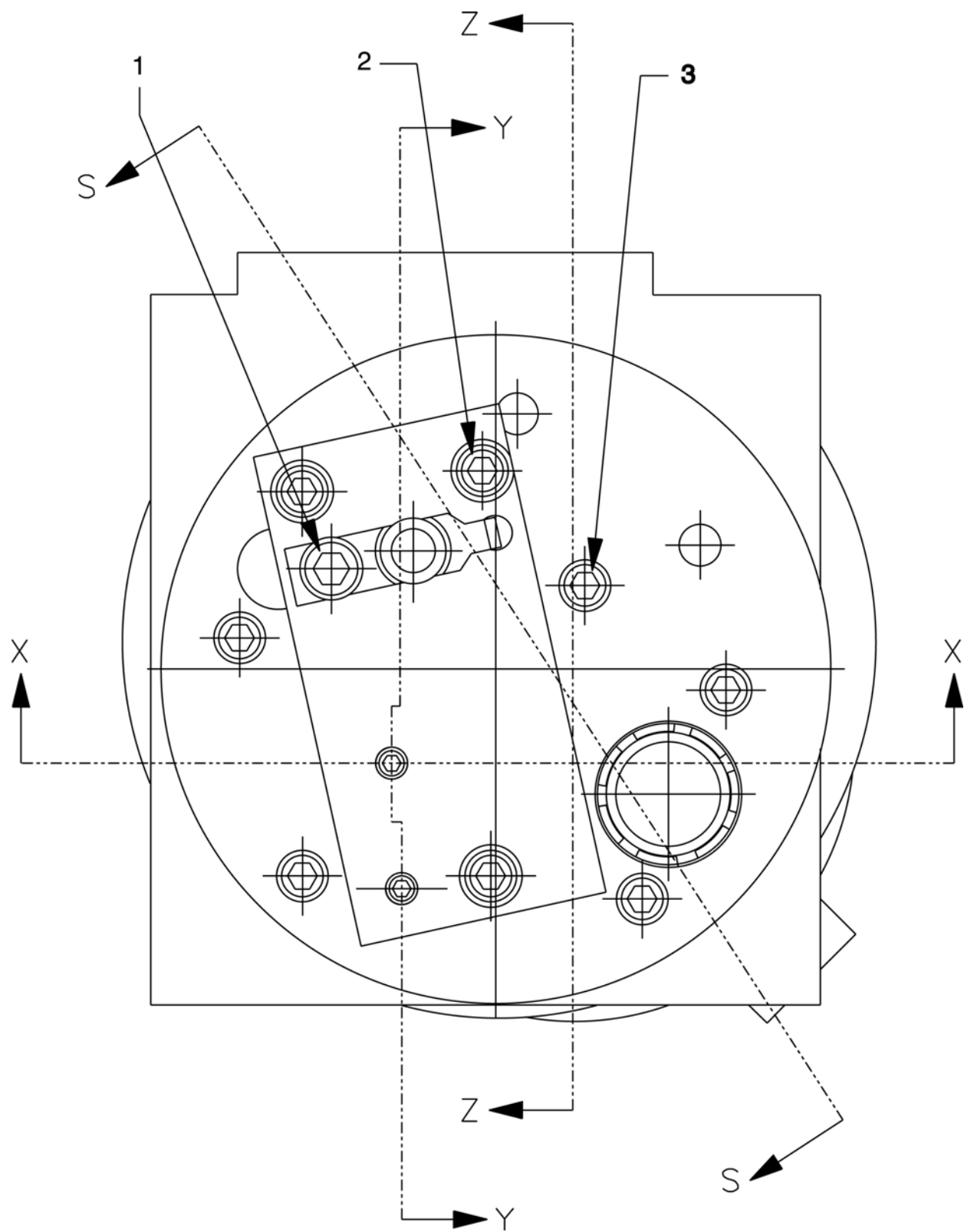


### Grd

Note: Serrated lockwasher must be adjacent to pump body.

Item No.	Part No.	No. Req'd	Description
1	12515	1	Machine Screw (#10-24 UNC X 3/4 Lg.)
2	10197	2	Nut (#10-24 UNC)
3	11108	2	Lockwasher (#10 External Tooth)

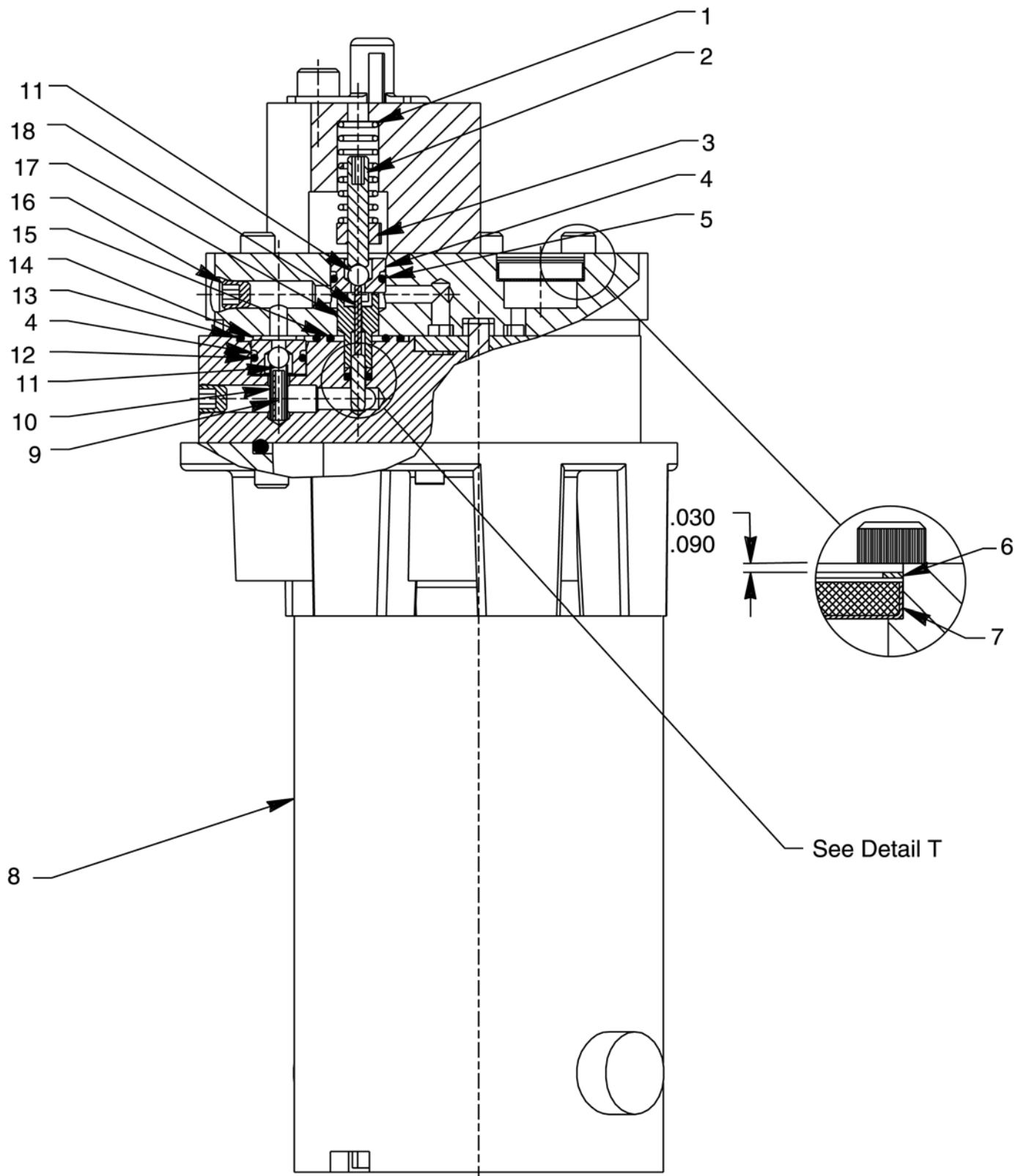
BASIC PUMP ASSEMBLY



Item No.	Part No.	No. Req'd	Description
1	10002	1	Screw (1/4-20 UNC X 3/8 Lg.; Torque to 80/100 in. lbs.)
2	14423	3	Screw (#10-24 X 2" Lg.; Torque to 60/80 in. lbs.)
3	14426	5	Screw (#10-24 UNC X 1" Lg.; Torque to 60/80 in. lbs.)



## SECTION X-X

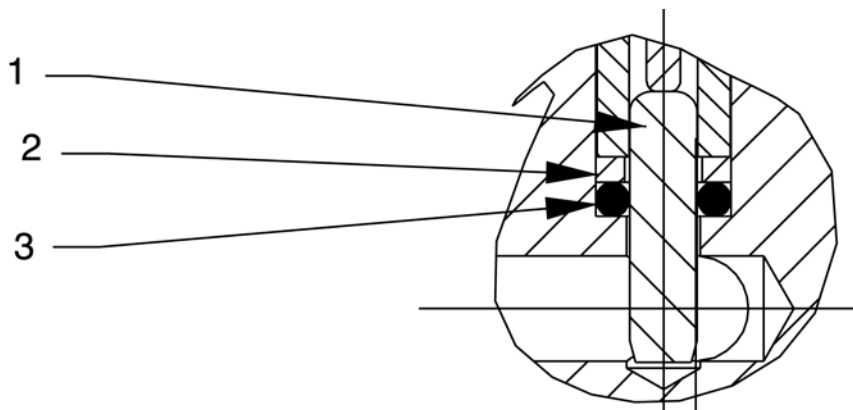


Item No.	Part No.	No. Req'd	Description
1	<b>*14484</b>	1	Compression Spring (3/8 O.D. X 1" Lg.)
2	<b>*251067</b>	1	Set Screw (#10-24 UNC x 1" Lg. Set unloading valve to 400/500 PSI)
3	<b>*207405</b>	1	Locknut (10-24 UNC)
4	<b>*251065</b>	1	Replaceable Seat
5	<b>*10268</b>	1	O-ring (1/2 X 3/8 X 1/16)
	<b>†17716</b>	1	O-ring (1/2 X 3/8 X 1/16)
6	<b>*16686</b>	1	Retaining Ring (Internal)
7	<b>*214578</b>	1	Filter
8	<b>421297-110-G</b>	1	Motor (For PE102-115DC; For replacement brush assembly, order [2] #2000072)
	<b>421297-220-G</b>	1	Motor (For PE102-220-DC; For replacement brush assembly, order [2] #2000072)
9	<b>11512</b>	1	Roll Pin
10	<b>14431</b>	1	Compression Spring (3/16 O.D. X 5/8 Lg.)
11	<b>*12223</b>	2	Ball (3/16 Dia.)
12	<b>*13943</b>	1	O-ring (1/2 X 3/8 X 1/16)
	<b>†17716</b>	1	O-ring (1/2 X 3/8 X 1/16)
13	<b>*10302</b>	1	O-ring (3/4 X 5/8 X 1/16)
	<b>†12400</b>	1	O-ring (3/4 X 5/8 X 1/16)
14	<b>*11031</b>	1	Copper Washer (15/32 X 5/16 X 1/32)
15	<b>*12098</b>	1	O-ring (9/16 X 7/16 x 1/16)
	<b>†250136</b>	1	O-ring (9/16 X 7/16 x 1/16)
16	<b>15130</b>	3	Plug (1/16 NPTF)
17	<b>251068</b>	1	Guide
18	<b>13937</b>	1	Dowel Pin



Part numbers marked with an asterisk (\*) are contained in Repair Kit No. 300651.  
Part numbers marked with a dagger (†) are contained in EPR Seal Kit No. 300653.

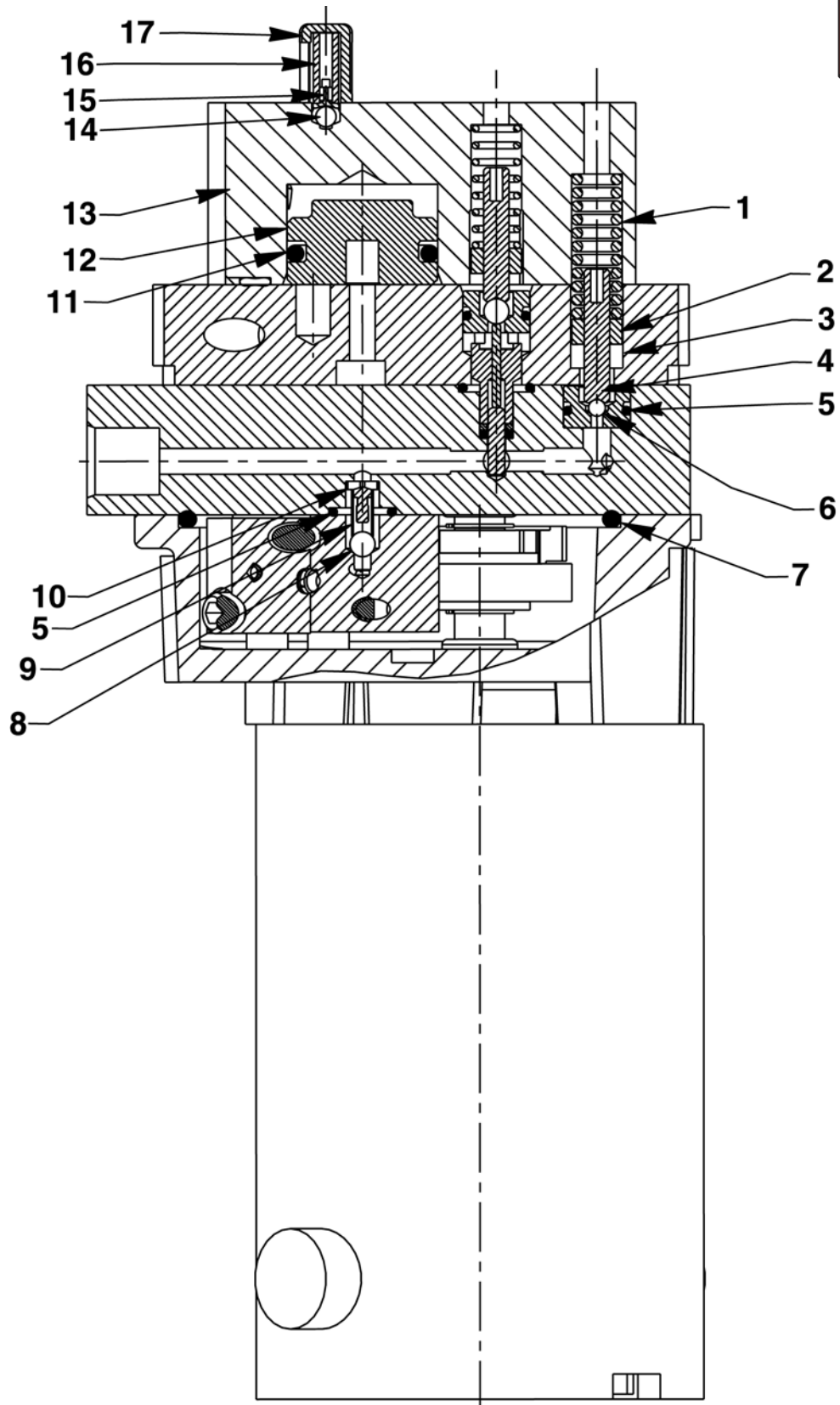
## DETAIL T



Item No.	Part No.	No. Req'd	Description
1	<b>10796</b>	1	Dowel Pin
2	<b>*214992</b>	1	Backup Washer (15/64 x 1/8 x 3/64)
3	<b>*17797</b>	1	O-ring (1/4 X 1/8 X 1/16)
	<b>†17713</b>	1	O-ring (1/4 X 1/8 X 1/16)

Part numbers marked with an asterisk (\*) are contained in Repair Kit No. 300651.  
Part numbers marked with a dagger (†) are contained in EPR Seal Kit No. 300653.

## SECTION Y-Y



To Parts  
List

## Parts List, Form No. 1000014, Back sheet 4 of 6

Item No.	Part No.	No. Req'd	Description
1	<b>*16724</b>	1	Compression Spring (3/8 O.D. x 1-1/4 Lg.)
2	<b>*251067</b>	1	Set Screw (#10-24 UNC x 1" Lg.; Set High Pressure Relief Valve to 10,100/10,700 PSI)
3	<b>*207405</b>	1	Locknut (10-24 UNC)
4	<b>*251064</b>	2	Replaceable Seat
5	<b>*13943</b>	3	O-ring (1/2 X 3/8 X 1/16)
	<b>†17716</b>	3	O-ring (1/2 X 3/8 X 1/16)
6	<b>*10418</b>	1	Steel Ball (1/8 Dia.)
7	<b>*10297</b>	1	O-ring (3-1/2 X 3 -1/4 X 1/8)
	<b>†13454</b>	1	O-ring (3-1/2 X 3 -1/4 X 1/8)
8	<b>*12223</b>	1	Ball (3/16 Dia.)
9	<b>*10445</b>	1	Compression Spring (5/32 O.D. X 3/4 Lg.)
10	<b>24549</b>	1	Ball Guide
11	<b>*19029</b>	1	O-ring (1-1/8 x 15/16 x 1/8)
	<b>†251288</b>	1	O-ring (1-1/8 x 15/16 x 1/8)
12	<b>350619</b>	1	Eccentric
13	<b>420616</b>	1	Automatic Valve Body
14	<b>*10374</b>	1	Steel Ball (7/32 Dia.)
15	<b>200796</b>	1	Adapter
16	<b>*15691</b>	1	Compression Spring (1/4 O.D. X 5/8 Lg.)
17	<b>350577</b>	1	Spring Retainer

Part numbers marked with an asterisk (\*) are contained in Repair Kit No. 300651.  
Part numbers marked with a dagger (†) are contained in EPR Seal Kit No. 300653.



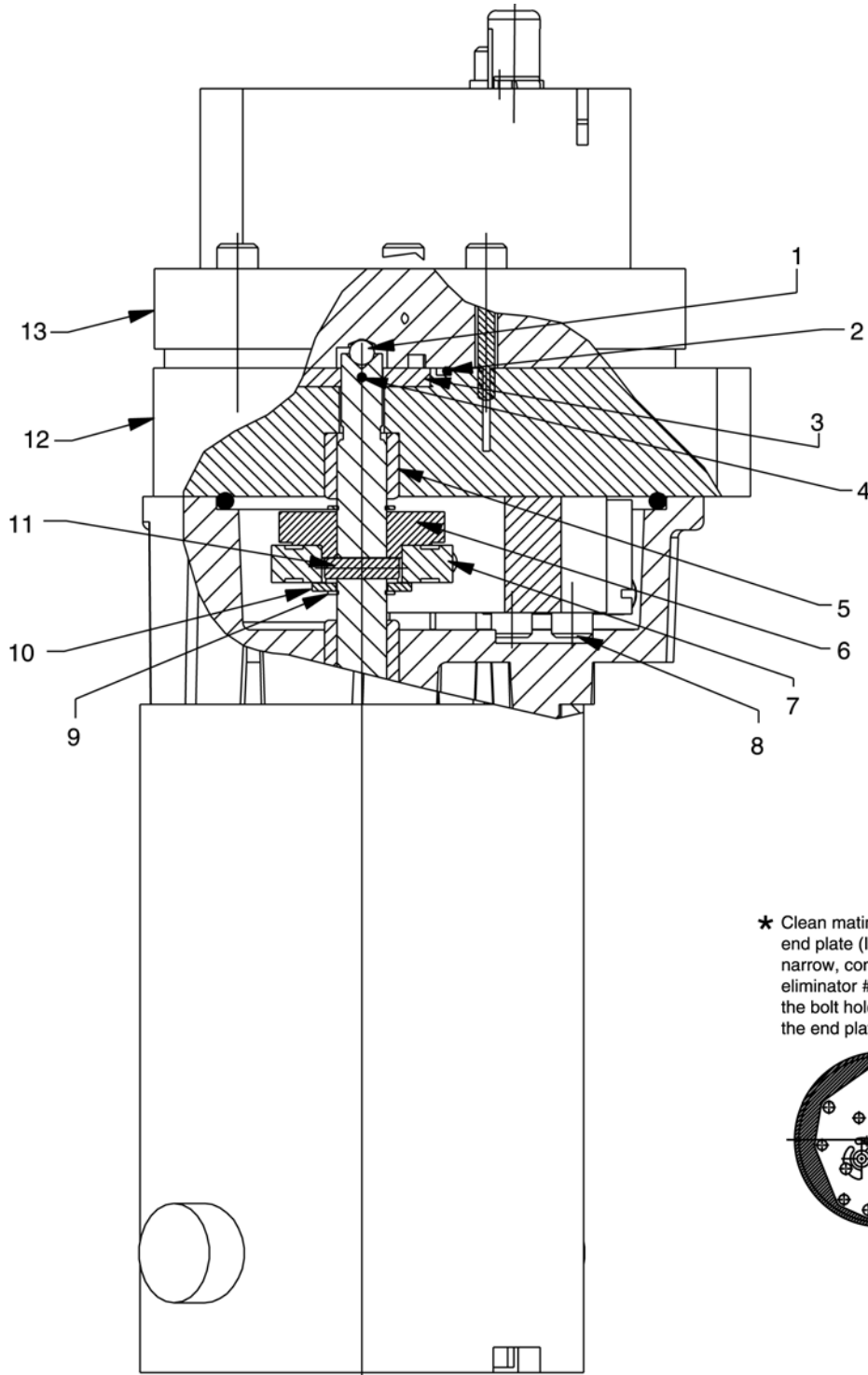
Refer to any operating instructions included with this product for detailed information about operation, testing, disassembly, reassembly, and preventive maintenance.

Items found in this parts list have been carefully tested and selected. **Therefore: Use only genuine Power Team replacement parts!**

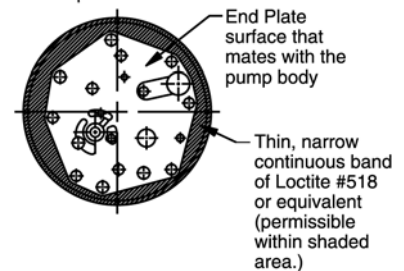
Additional questions can be directed to our Technical Services Department.



## SECTION Z-Z

**To Parts  
List**

★ Clean mating surfaces of pump body and end plate (Items #12 & #13). Apply a thin, narrow, continuous band of Loctite gasket eliminator #518 or equivalent, outside of the bolt hole and drain hole patterns on the end plate.

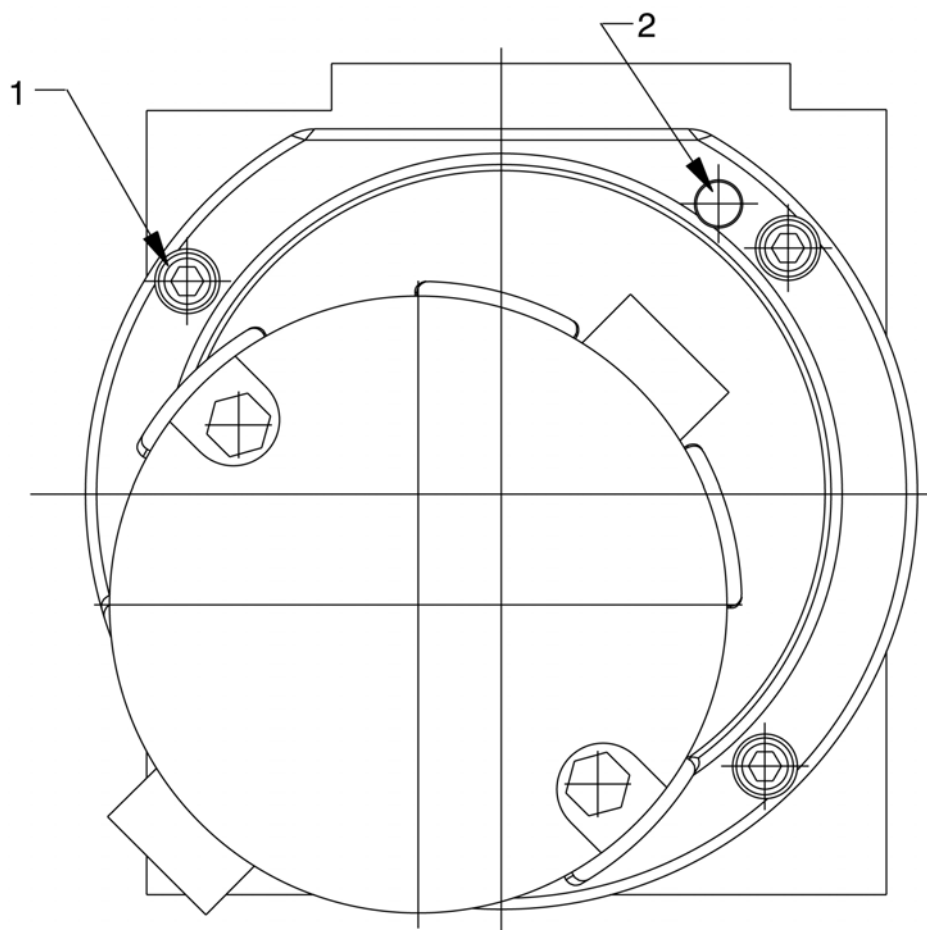


Item No.	Part No.	No. Req'd	Description
1	*12223	1	Ball (3/16 Dia.)
2	*251063	1	O-ring (1-7/16 x 1-5/16 x 1/16)
	†251289	1	O-ring (1-7/16 x 1-5/16 x 1/16)
3	420615	1	Gerotor Set
4	251061	1	Dowel Pin
5	251129	1	Needle Bearing
6	421609	1	Eccentric
7	15695	1	Ball Bearing
8	250491	4	Screw (10-24 UNC x 1-1/4 Lg.; Torque to 60/80 in. lbs.)
9	251069	2	Retaining Ring (Internal)
10	252169	1	Washer (25/64 X 3/4 X 1/16)
11	251117	1	Spring Pin
12	64731	1	Pump Body
13	64347	1	End Plate



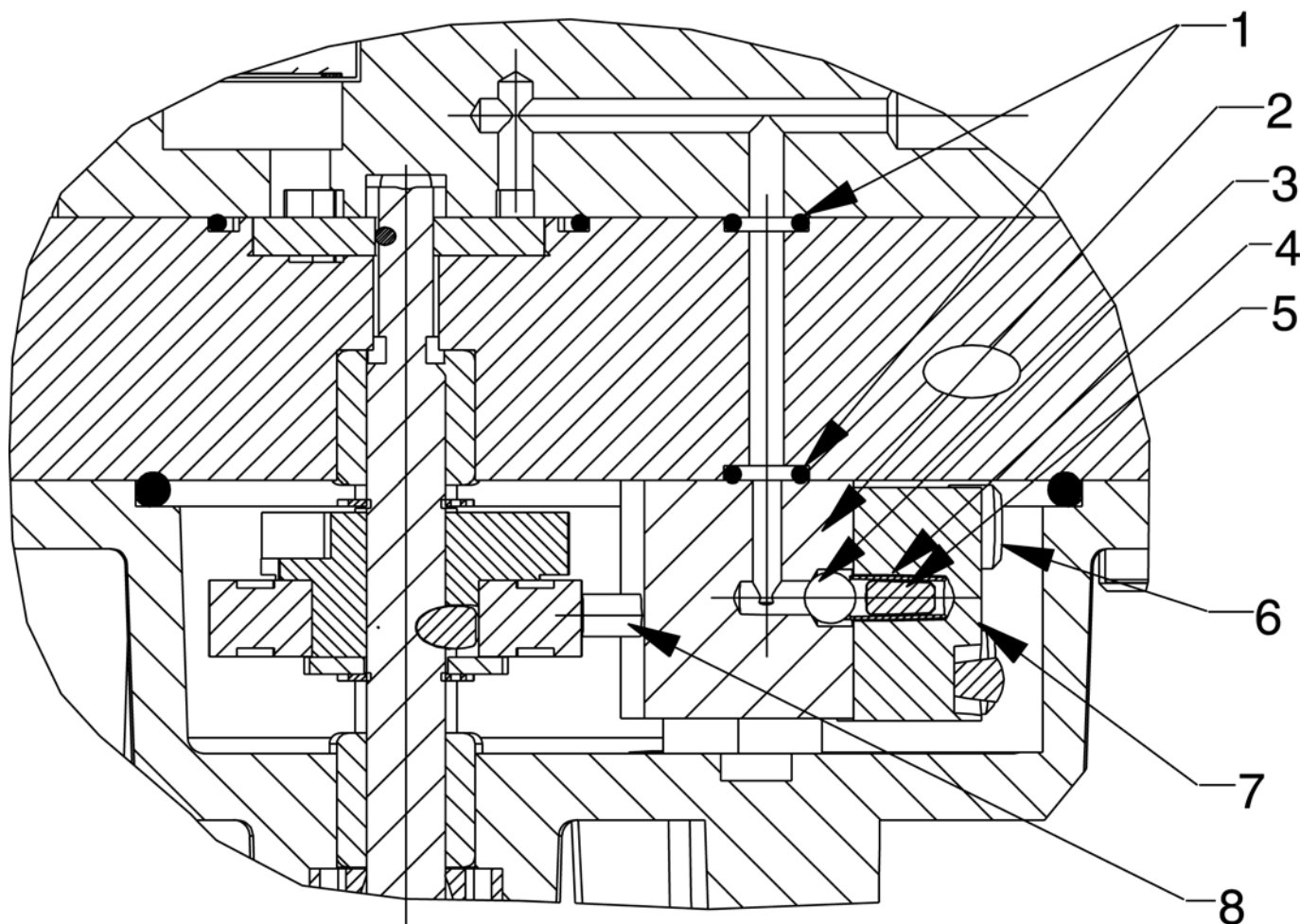
Part numbers marked with an asterisk (\*) are contained in Repair Kit No. 300651.  
Part numbers marked with a dagger (†) are contained in EPR Seal Kit No. 300653.

## MOTOR END VIEW



Item No.	Part No.	No. Req'd	Description
1	11434	3	Screw (10-24 UNC X 1/2 Lg.; Torque to 60/80 in. lbs.)
2	17567	2	Pin

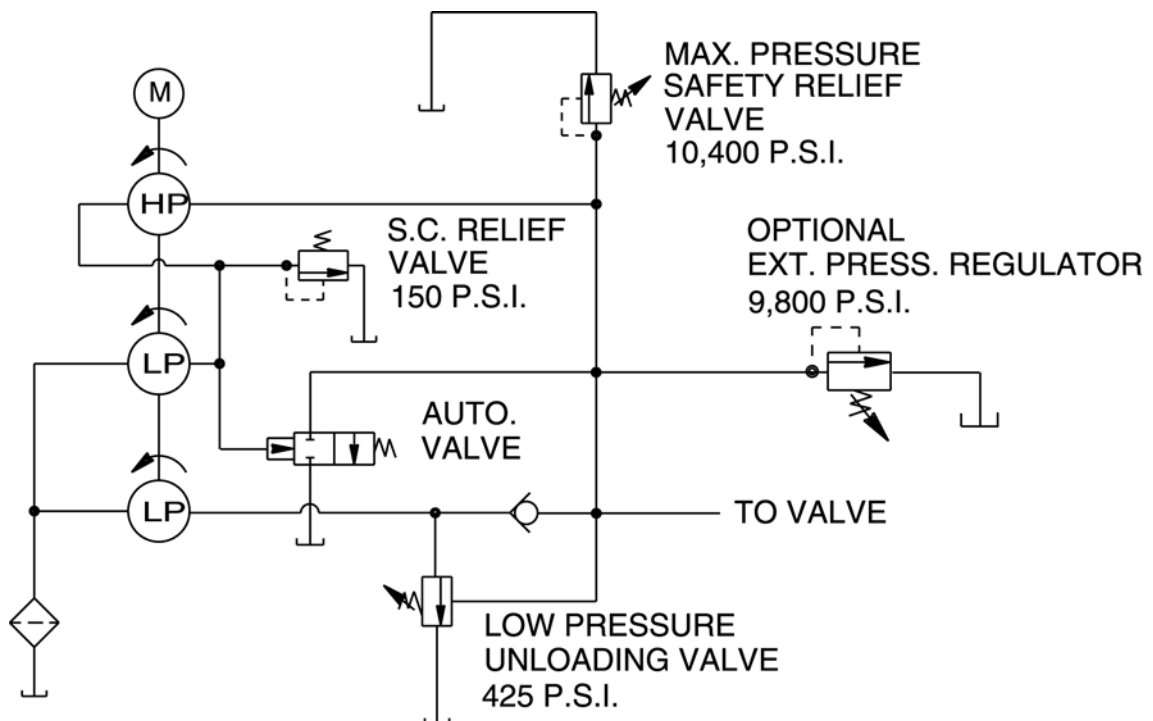
## SECTION S-S



Item No.	Part No.	No. Req'd	Description
1	*10265	3	O-ring (5/16 X 3/16 X 1/16)
	†17714	3	O-ring (5/16 X 3/16 X 1/16)
2	420617	1	High Pressure Piston Body
3	*12223	1	Ball (3/16 Dia.)
4	*10445	1	Compression Spring (5/32 O.D. X 3/4 Lg.)
5	251040	1	Dowel Pin
6	12102	3	Screw (#10-24 UNC X 3/4 Lg.; Torque to 60/80 in. lbs.)
7	350620	1	High Pressure Cap Body
8	251062	1	Piston (Position with chamfer towards bearing.)

Part numbers marked with an asterisk (\*) are contained in Repair Kit No. 300651.  
Part numbers marked with a dagger (†) are contained in EPR Seal Kit No. 300653.

## HYDRAULIC SCHEMATIC



## ELECTRICAL INFORMATION

**Note:** All electrical information and schematics for these units can be found in Form No. 102808 Operating Instructions.