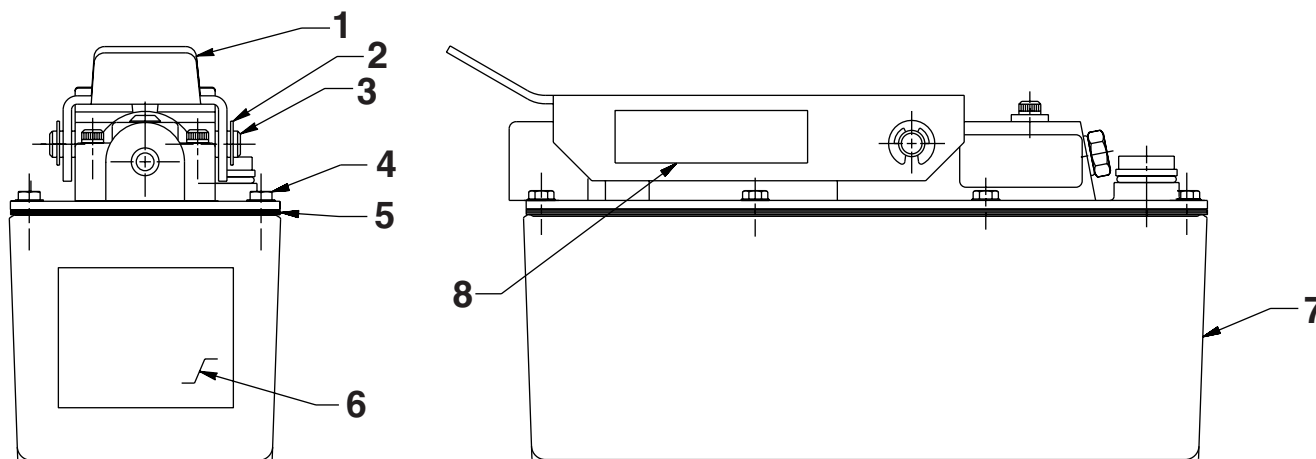


MODEL G AIR/HYDRAULIC PUMP

SIDE & END VIEW FOR PRO30222



Item No.	Part No.	No. Req'd	Description
1	47696BK2	1	Pedal, Hand
2	*11032	2	Ring, Retain Ext. (0.30 x .035)
3	215709	1	Pin
4	215952	8	Screw, Hex Washer HD (10-24 x 5/8; Torque to 25/35 in. lbs. oiled).
5	*47675	1	Gasket, Reservoir
6	305494	1	Decal, Instruction (Oil Lub)
7	62007BK2	1	Reservoir
8	253469	1	Decal, Instruction

PARTS INCLUDED BUT NOT SHOWN

253484	2	Screw, Hex (Washer HD Tapping; For pump mounting purposes only.)
--------	---	--

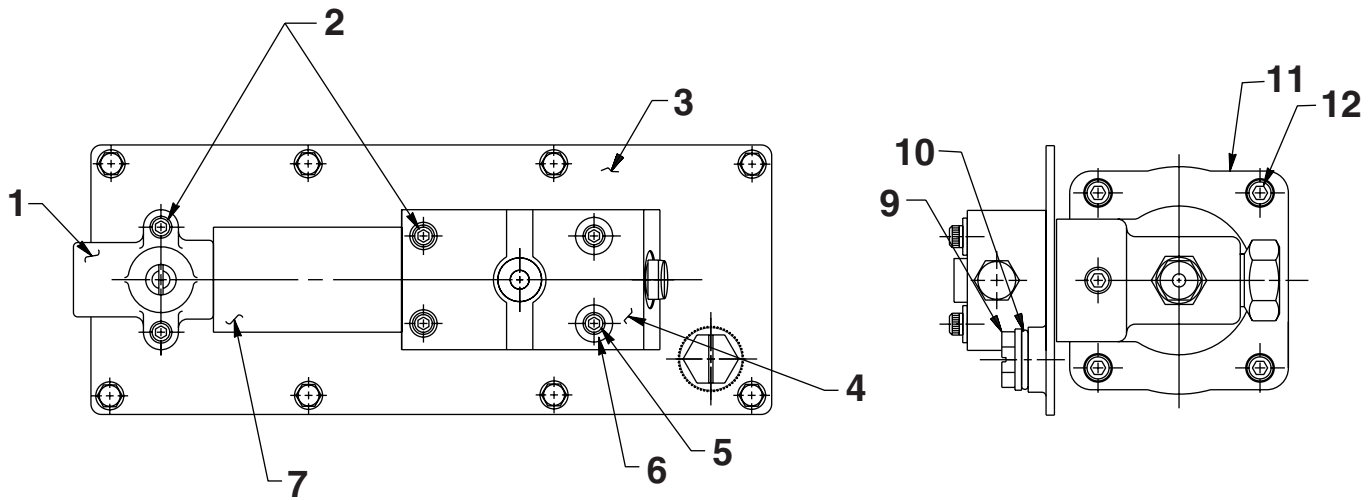
Part numbers marked with an asterisk (*) are contained in Repair Kit No. 1000019.

(Rotary Part No. IN30047)

Sheet No. 1 of 4

Rev Date: 23 July 2003

TOP & END VIEWS FOR PRO30222



Item No.	Part No.	No. Req'd	Description
1	37199	1	Body, Air Intake Valve
2	11151	4	Screw, Socket HD (10-24 x 1-1/4; Torque to 50/60 in. lbs.)
3	421813BK2	1	Plate, Cover
4	59051	1	Body, Release Valve
5	11435	2	Screw, Socket HD (10-24 x 1-3/4; torque to 50/60 in. lbs.)
6	11089	2	Washer, Flat (.51 x .22)
7	*29992	1	Tube, Foam
9	251689	1	Cap, Filler Breather
10	*10273	2	O-ring (.81 x .62 Nitrile)
11	64767	1	Body, Pump
12	17428	4	Screw, Socket HD (1/4-20 x 3-1/2; Torque to 85/95 in. lbs. oiled; Note: Cross torque in increments of 30 in. lbs.)

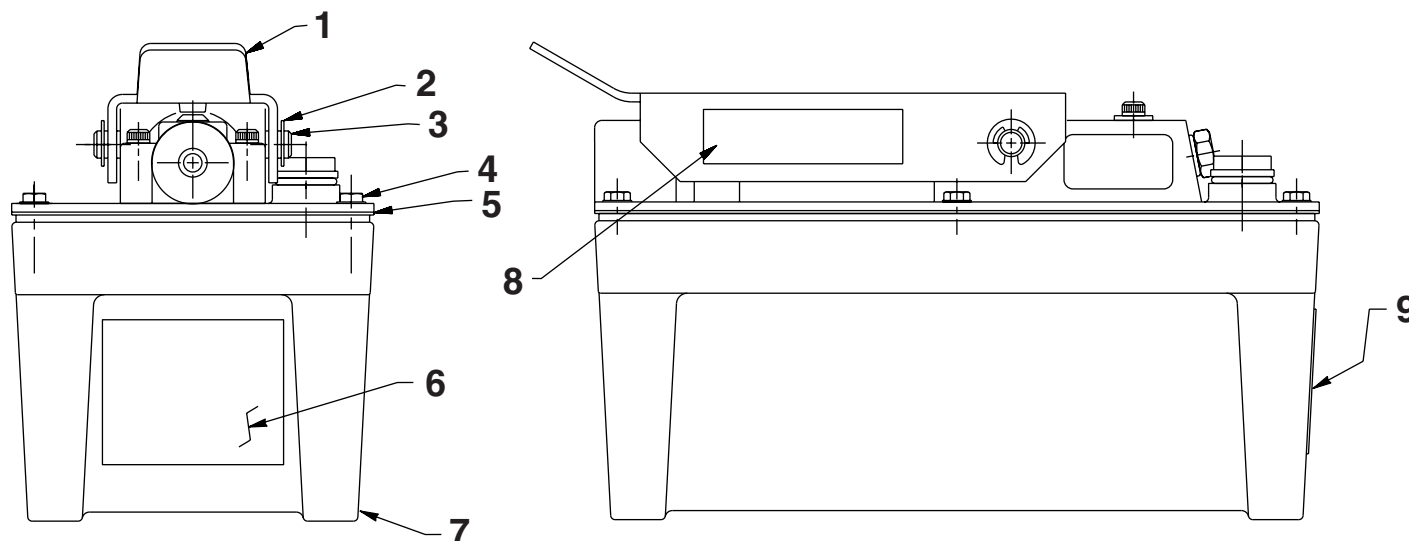
Part numbers marked with an asterisk (*) are contained in Repair Kit No. 1000019.

Refer to any operating instructions included with this product for detailed information about operation, testing, disassembly, reassembly, and preventive maintenance.

Items found in this parts list have been carefully tested and selected. **Therefore: Use only genuine Power Team replacement parts!**

Additional questions can be directed to our Technical Services Department.

SIDE & END VIEW FOR PRO30225



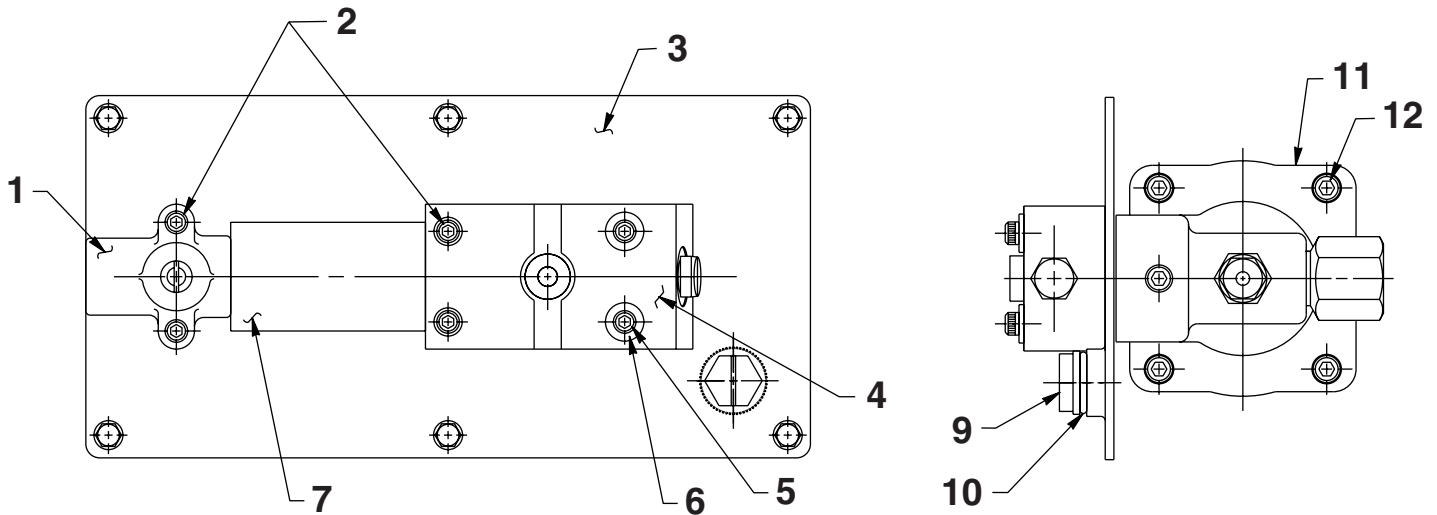
Item No.	Part No.	No. Req'd	Description
1	47696BK2	1	Pedal, Hand
2	†11032	2	Ring, Retain Ext. (0.30 x .035)
3	215709	1	Pin
4	215952	6	Screw, Hex Washer HD (10-24 x 5/8; Torque to 35/42 in. lbs. oiled).
5	†33853	1	Gasket, Reservoir
6	†305494	1	Decal, Instruction (Oil Lub)
7	41300BK2	1	Reservoir
8	253469	1	Decal, Instruction
9	251672	1	Decal, Warning

PARTS INCLUDED BUT NOT SHOWN

253484	2	Screw, Hex (Washer HD Tapping; For pump mounting purposes only.)
--------	---	--

Part numbers marked with a dagger (†) are contained in Repair Kit No. 1000020.

TOP & END VIEWS FOR PRO30225

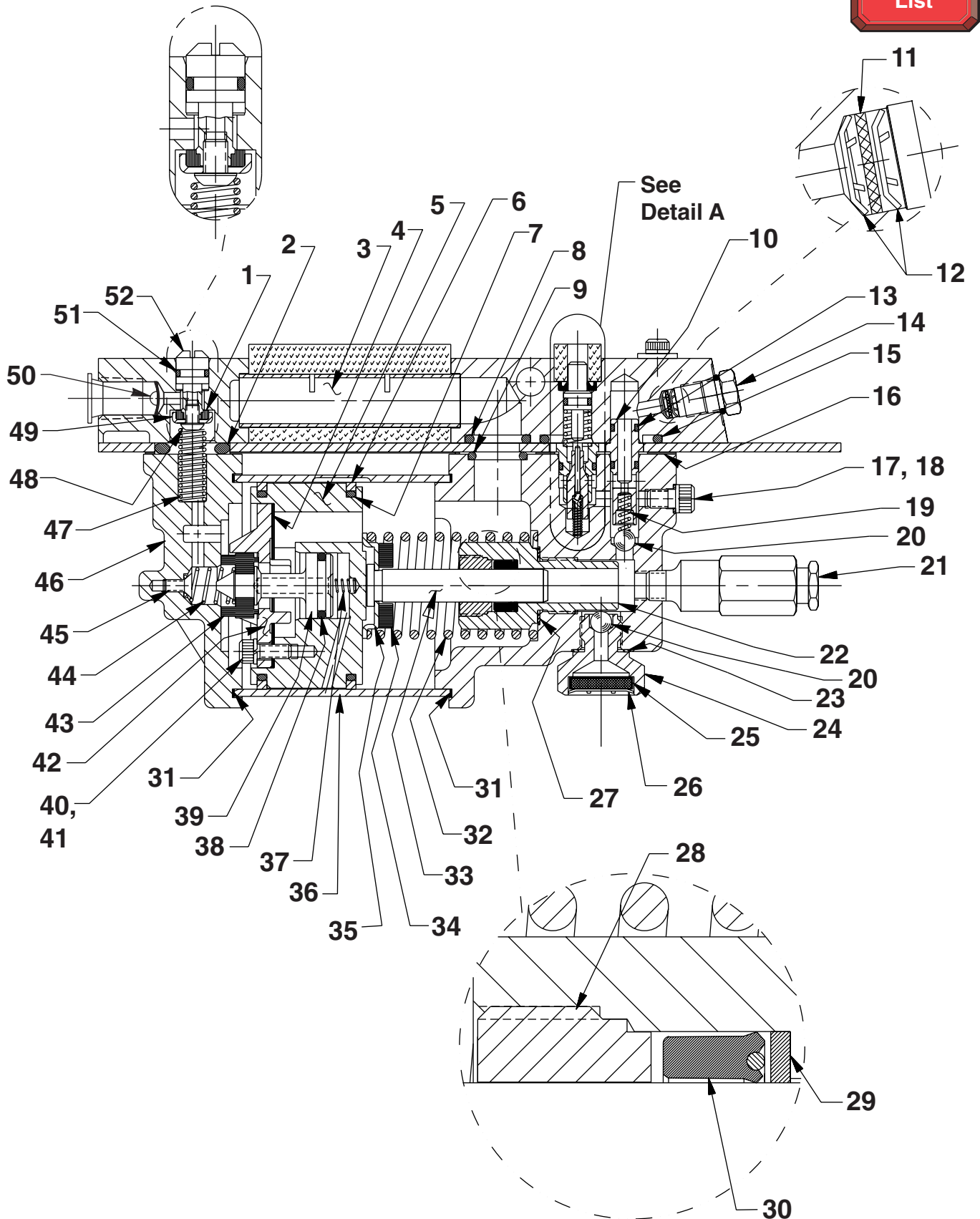


Item No.	Part No.	No. Req'd	Description
1	37199	1	Body, Air Intake Valve
2	11151	4	Screw, Socket HD (10-24 x 1-1/4; Torque to 50/60 in. lbs.)
3	421870BK2	1	Plate, Cover
4	59051	1	Body, Release Valve
5	11435	2	Screw, Socket HD (10-24 x 1-3/4; torque to 50/60 in. lbs.)
6	11089	2	Washer, Flat (.51 x .22)
7	†29992	1	Tube, Foam
9	251689	1	Cap, Filler Breather
10	†10273	2	O-ring (.81 x .62 Nitrile)
11	64767	1	Body, Pump
12	17428	4	Screw, Socket HD (1/4-20 x 3-1/2; Torque to 85/95 in. lbs. oiled; Note: Cross torque in increments of 30 in. lbs.)

Part numbers marked with a dagger (†) are contained in Repair Kit No. 1000020.

BASIC ASSEMBLY

To Parts List



Parts List, Form No. 1000024, Back sheet 3 of 4

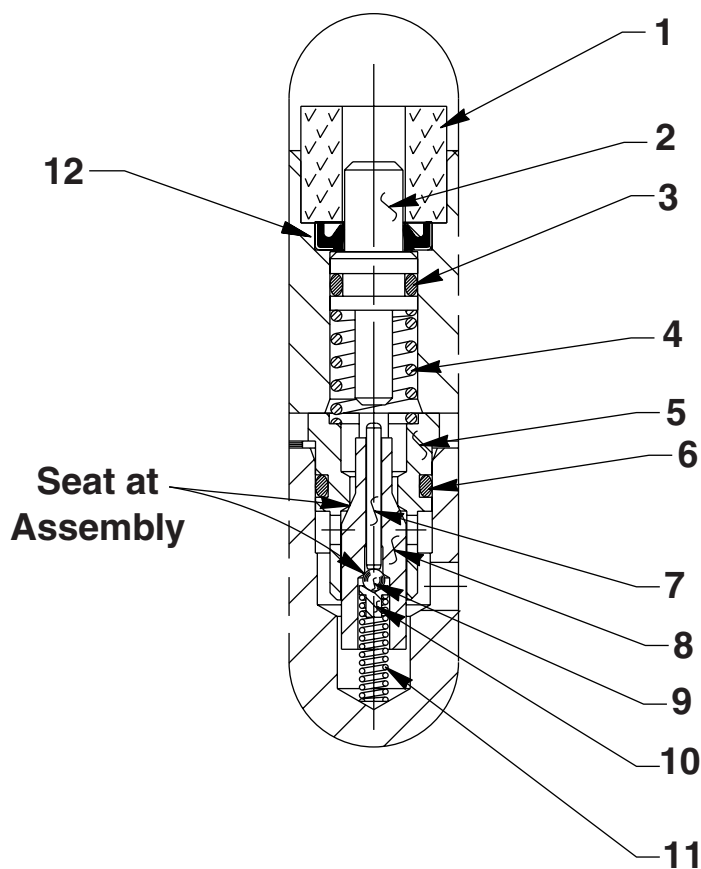
Item No.	Part No.	No. Req'd	Description	Item No.	Part No.	No. Req'd	Description
1	†*28182	1	Poppet, Air Valve	25	214578	1	Filter
2	†*251717	1	O-ring (1.00 x .62 Nitrile)	26	214586	1	Ring, Retain Int. (0.63 x .015)
3	28387	1	Muffler	27	†*10263	1	Washer, Special (1.00 x .77)
4	†*28239	1	Gasket	28	†*351801	1	Retainer (Note: See "INSTRUCTIONS FOR RETAINER REPLACEMENT" on back sheet 4 of 4)
5	52390	1	Body, Piston	29	†*12488	1	Washer, Backup (.63 x .44)
6	†*14265	2	Ring, Piston (2.77 x 2.54)	30	†*253271	1	U-cup
7	†*251835	2	O-ring (2.50 x 2.31 Nitrile)	31	†*17429	2	Washer, Backup (2.94 x 2.75)
8	†*10276	1	O-ring (1.00 x .75 Nitrile)	32	†*13938	1	Spring (1.45 OD x 4.4 x .12 WS)
9	†*10272	1	O-ring (.75 x .50 Nitrile)	33	253272	1	Piston
10	34378	1	Body, Check Valve	34	†202613	1	Bumper
11	†*214596	1	Disc, Filter	35	211082	1	Guide, Spring
12	†*12201	2	Ring, Retain Int. (0.18 x .010)	36	37434	1	Cylinder, Air (Locate groove on upper half (top) of pump with chamfered tube end towards rear head as shown.)
13	*†211053	2	O-ring (.37 x .25 Nitrile)	37	†*12692	1	Spring (.18 OD x 1.70 x .02 WS)
14	17147	1	Fitting, Plug (7/16)	38	†*211052	1	O-ring (.90 x .70 Nitrile)
15	†*11841	1	O-ring (1.62 x 1.37 Nitrile)	39	305475	1	Stem, Exhaust Valve
16	†*351021	1	Gasket, Cover Plate	40	†*10241	3	Washer, Lock (.33 x .20)
17	†*10442	1	Washer, Copper (.37 x .25)	41	211054	3	Screw, Socket HD (10-24 x 1/2; Torque to 50/55 in. lbs.)
18	10002	1	Screw, Socket HD (1/4-20 x 3/8; Torque to 90/110 in. lbs.)	42	33822	1	Casting, Piston End Plate
19	†*10445	1	Spring (.16 OD x .72 x .01 WS)	43	†*28183	1	Poppet, Piston
20	†*10423	2	Ball (9/32" Dia. Steel)	44	†*205679	1	Spring (.49 OD x .92 x .04 WS)
21	21278-40	1	Valve, Relief (Reset at 4,000/4,2000 PSI; For PRO30222)	45	†*205674	1	Screw, Flat HD (8-32 x 3/8; Torque to 12/18 in. lbs.)
	21278-40	1	Valve, Relief (Reset at 4,2000/4,4000 PSI; For PRO30225)	46	51480	1	Head, Rear
			(Apply Loctite 592 [PT #905516] or equiv. and torque to 150/170 in. lbs.)	47	†*253348	1	Spring (.36 OD x 1.50 x .05 WS)
22	421676	1	Housing, Seal & Piston (Torque to 90/100 ft. lbs. oiled,)	48	253420	1	Screw, Button Head (8-32 x 1/4)
23	†*10261	1	Washer, Copper (.75 x .60)	49	28198	1	Guide, Seal
24	421539	1	Adapter, Filter (Torque to 40/50 ft. lbs. oiled; For PRO30222)	50	†*216296	1	Filter
	48010	1	Adapter, Filter (Torque to 40/50 ft. lbs. oiled; For PRO30225)	51	†*10267	1	O-ring (.43 x .31 Nitrile)
				52	33841	1	Button, Actuator

Part numbers marked with an asterisk (*) are contained in Repair Kit No. 1000019.

Part numbers marked with a dagger (†) are contained in Repair Kit No. 1000020.



DETAIL A



Item No.	Part No.	No. Req'd	Description
1	†*206504	1	Tube, Foam
2	28227	1	Button, Release Valve
3	†*10266	1	O-ring (.37 x .25 Nitrile)
4	†*251297	1	Spring (.36 OD x .51 x .05 WS)
5	34377	1	Retainer, Poppet
6	†*15279	1	O-ring (.50 x .37 Nitrile)
7	13937	1	Pin, Dowel (.06 x .63)
8	29037	1	Poppet, Release Valve
9	†*14443	1	Ball (3/32" Dia. Steel)
10	209736	1	Retainer, Ball
11	†*13959	1	Spring (.12 OD x .50 x .02 WS)
12	†*15620	1	Seal, Oil Shaft (.50 x .25 NIT)

Part numbers marked with an asterisk (*) are contained in Repair Kit No. 1000019.

Part numbers marked with a dagger (†) are contained in Repair Kit No. 1000020.

INSTRUCTIONS FOR RETAINER REPLACEMENT

Your pump's retainer is locked into place by one of the two following methods. Determine which method was used on your pump's retainer, then follow the appropriate steps to remove the old and install and stake the new.

Method 1 - Retainer shows no sign of stake marks

1. This retainer has been locked in place with a Loctite product. To replace it, a moderate amount of heat needs to be applied to the cylinder nut (in the area of the retainer) to soften the existing Loctite allowing it to be removed.
2. Install the new retainer into the cylinder nut and torque to 80/100 in. lbs. **Note: Do not use a Loctite product this time but stake the new retainer in place according to instructions in Step 3.**
3. To lock retainer into place, use a center punch positioned in the seam between the retainer and the cylinder nut and stake the new retainer in two places approximately 180° apart.

Method 2 - Retainer has two stake marks in the seam between the retainer and the cylinder nut

1. For replacement of this retainer, the stake marks must be removed. Using a 1/8" or larger diameter drill bit, remove the existing stakes by drilling a short distance into the stake marks. Remove the retainer.
2. Install the new retainer into the cylinder nut and torque to 80/100 in. lbs.
3. To lock retainer into place, use a center punch positioned in the seam between the retainer and the cylinder nut and stake the new retainer in two places approximately 180° apart.

NOTE: Do not stake in the old stake marks.

