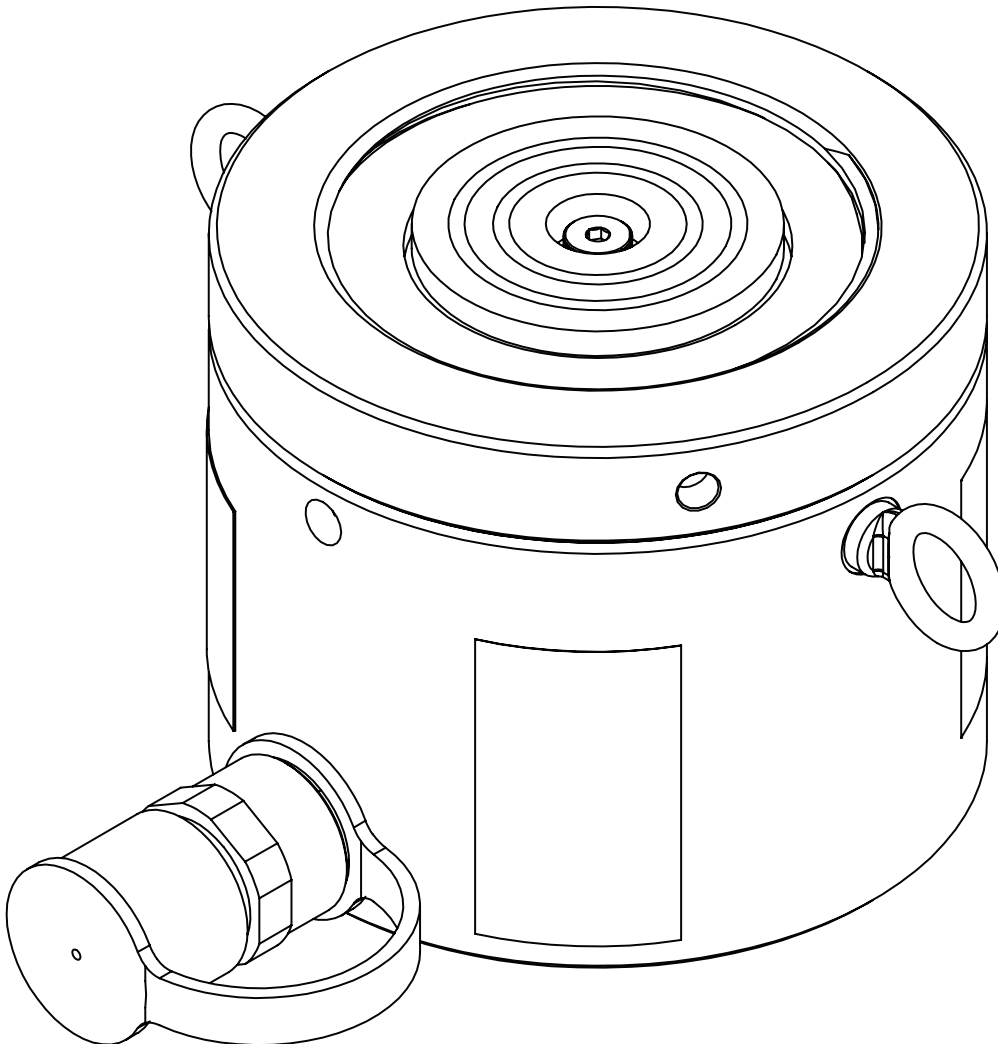
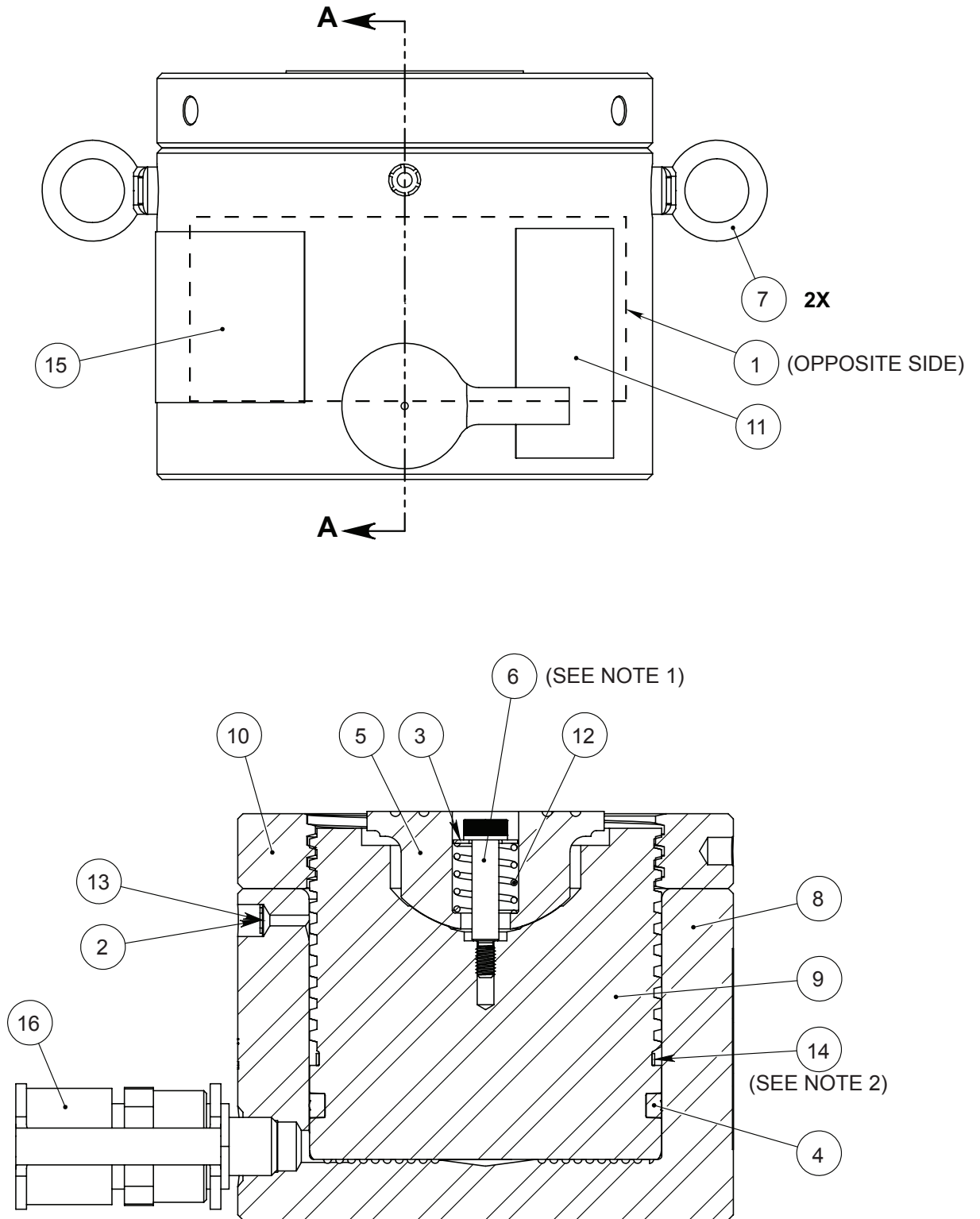


**67, 110, 180, 220, 280, 430, 565 TON
HYDRAULIC CYLINDER
PANCAKE LOCKING COLLAR**



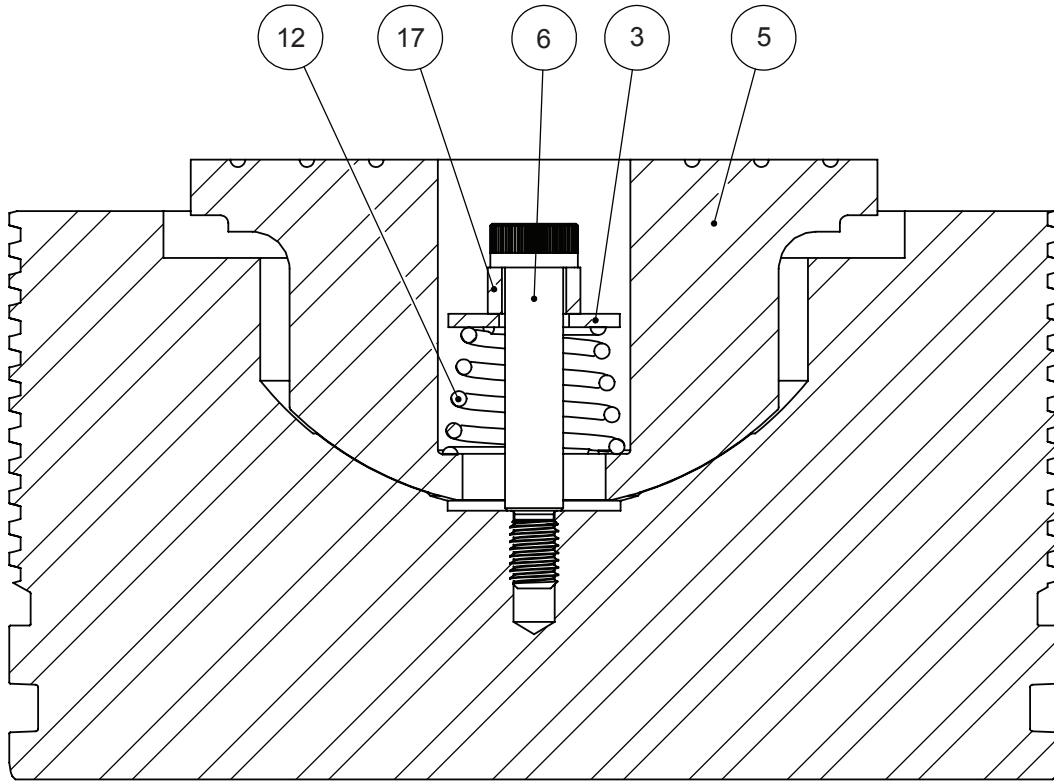
PARTS DIAGRAM



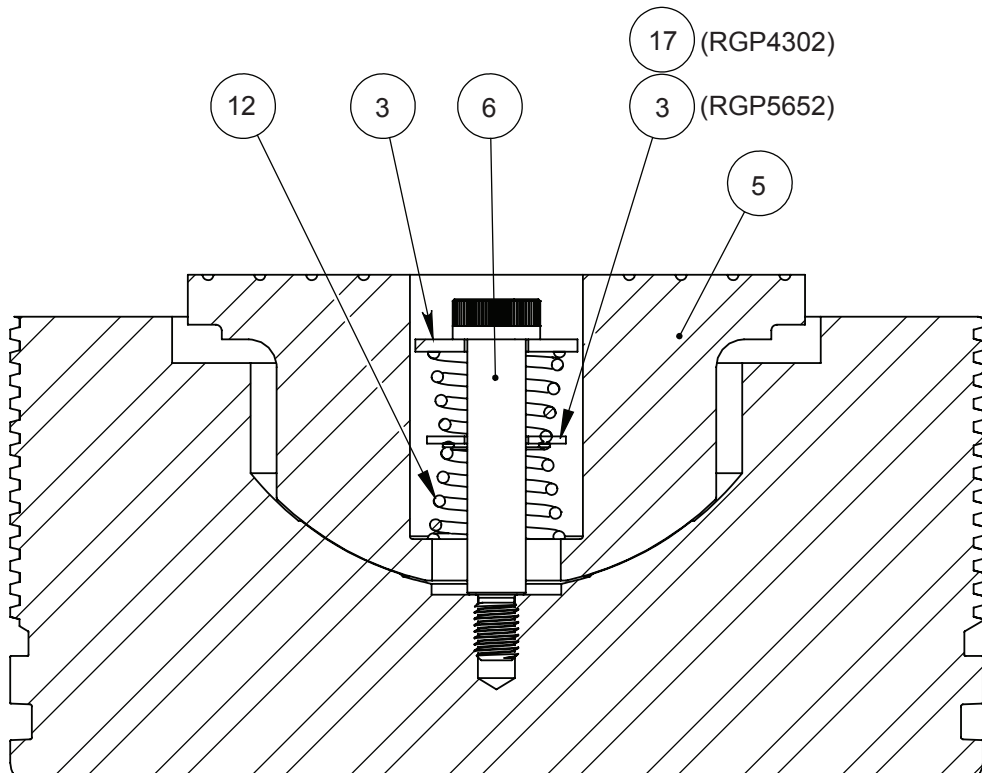
NOTES:
 1. TORQUE TO 100-300 IN-LBS.
 2. CUT TO FIT GROOVE

PARTS DIAGRAM

RGP2802



RGP4302 & RGP5652



PARTS LIST

RGP672				
ITEM	PART NO.	DESCRIPTION	QTY.	UOM
1	1000953	DECAL, TRADENAME POWER TEAM (2.4 X 6.3)	1	EA
2	12201	RING, RETAIN INT 0.18 X .010	1	EA
3	14968	WASHER, SPECIAL 0.750 x0.390	1	EA
4	2001879	SEAL, TSEL 4.13INX3.76X0.281 NITR70	1	EA
5	2009368	CAP, SWIVEL 55T ST FNC	1	EA
6	2009371	SCREW, SHOULDER M6x1 - 30MM	1	EA
7	2010284	EYEBOLT, LIFTING M6x1 X 9mm	2	EA
8	2010301	CYLINDER, PANCAKE 2IN 67T LC FNC SWVL	1	EA
9	2010308	ROD, PISTON PANCAKE 2IN 67T LC FNC SWVL	1	EA
10	2010315	COLLAR, PANCAKE 2IN 67T LC FNC SWVL	1	EA
11	203908	DECAL, WARNING CYLINDER	1	EA
12	213880	SPRING COM OD.725IDX.XXXR49.5L1.015MW	1	EA
13	214596	DISC, FILTER	1	EA
14	250972	TAPE, RED REFLECTIVE	1.1	FT
15	250973	DECAL, WARNING LOCKING COLLAR	1	EA
16	25600	COUPLER,QUICK CYLINDER HALF	1	EA

RGP1102				
ITEM	PART NO.	DESCRIPTION	QTY.	UOM
1	1000954	DECAL, TRADENAME POWER TEAM 2.5" X 9.1"	1	EA
2	12201	RING, RETAIN INT 0.18 X .010	1	EA
3	10258	WASHER, PLAIN 0.41 x 0.81 x 0.06 STEL	1	EA
4	2001874	SEAL, TSEL 5.38INx4.90x0.375 NITR 70	1	EA
5	2009187	CAP, SWIVEL 100T ST FNC	1	EA
6	2009258	SCREW, SHOULDER M8 X 1.25 - 40MM	1	EA
7	2010284	EYEBOLT, LIFTING M6x1 X 9mm	2	EA
8	2010302	CYLINDER, PANCAKE 2IN 110T LC FNC SWVL	1	EA
9	2010309	ROD, PISTON PANCAKE 2IN 110T LC FNC SWVL	1	EA
10	2010316	COLLAR, PANCAKE 2IN 110T LC FNC SWVL	1	EA
11	203908	DECAL, WARNING CYLINDER	1	EA
12	212000	SPRING COM OD1.025ID.667R32L1.680CS	1	EA
13	214596	DISC, FILTER	1	EA
14	250972	TAPE, RED REFLECTIVE	1.42	FT
15	250973	DECAL, WARNING LOCKING COLLAR	1	EA
16	25600	COUPLER,QUICK CYLINDER HALF	1	EA

PARTS LIST

RGP1802				
ITEM	PART NO.	DESCRIPTION	QTY.	UOM
1	1000945	DECAL, TRADENAME POWER TEAM 2.75"X12.09"	1	EA
2	12201	RING, RETAIN INT 0.18 X .010	1	EA
3	10231	WASHER, PLAIN 0.44 x 1.00 x 0.08 STEL	1	EA
4	2001869	SEAL, TSEL 6.75INx6.28x0.375 NITR 70	1	EA
5	2009188	CAP, SWIVEL 150T ST FNC	1	EA
6	2009268	SCREW, SHOULDER M8 X 1.25 - 50MM	1	EA
7	2010284	EYEBOLT, LIFTING M6x1 X 9mm	2	EA
8	2010303	CYLINDER, PANCAKE 2IN 180T LC FNC SWVL	1	EA
9	2010310	ROD, PISTON PANCAKE 2IN 180T LC FNC SWVL	1	EA
10	2010317	COLLAR, PANCAKE 2IN 180T LC FNC SWVL	1	EA
11	203908	DECAL, WARNING CYLINDER	1	EA
12	2009269	SPRING, COM 1.063OD 0.53ID 1.77L	1	EA
13	214596	DISC, FILTER	1	EA
14	250972	TAPE, RED REFLECTIVE	1.78	FT
15	250973	DECAL, WARNING LOCKING COLLAR	1	EA
16	25600	COUPLER,QUICK CYLINDER HALF	1	EA

RGP2202				
ITEM	PART NO.	DESCRIPTION	QTY.	UOM
1	1000946	DECAL, TRADENAME POWERTEAM (2.75x14.01)	1	EA
2	12201	RING, RETAIN INT 0.18 X .010	1	EA
3	10586	WASHER, PLAIN 0.56 x 1.40 x 0.10 STEL	1	EA
4	2002009	SEAL, TSEL 7.50INx7.03x0.375 NITR 70	1	EA
5	2009189	CAP, SWIVEL 200T ST FNC	1	EA
6	2009306	SCREW, SHOULDER M10 x 1.5-60MM	1	EA
7	2010285	EYEBOLT, LIFTING M7x1 X 10.5mm	2	EA
8	2010304	CYLINDER, PANCAKE 2IN 220T LC FNC SWVL	1	EA
9	2010311	ROD, PISTON PANCAKE 2IN 220T LC FNC SWVL	1	EA
10	2010318	COLLAR, PANCAKE 2IN 220T LC FNC SWVL	1	EA
11	203908	DECAL, WARNING CYLINDER	1	EA
12	209177	SPRING COM OD1.312ID.812R114L1.973MW	1	EA
13	214596	DISC, FILTER	1	EA
14	250972	TAPE, RED REFLECTIVE	2	FT
15	250973	DECAL, WARNING LOCKING COLLAR	1	EA
16	25600	COUPLER,QUICK CYLINDER HALF	1	EA

PARTS LIST

RGP2802				
ITEM	PART NO.	DESCRIPTION	QTY.	UOM
1	1000946	DECAL, TRADENAME POWERTEAM (2.75x14.01)	1	EA
2	12201	RING, RETAIN INT 0.18 X .010	1	EA
3	10586	WASHER, PLAIN 0.56 x 1.40 x 0.10 STEL	1	EA
4	2010323	Seal, T seal 8.50IN x8.03 x0.375 NITR 70	1	EA
5	2009413	CAP, SWIVEL 250T ST FNC	1	EA
6	2009438	SCREW, SHOULDER M10 X 1.5MM - 50MM	1	EA
7	2010285	EYEBOLT, LIFTING M7x1 X 10.5mm	2	EA
8	2010305	CYLINDER, PANCAKE 2IN 280T LC FNC SWVL	1	EA
9	2010312	ROD, PISTON PANCAKE 2IN 280T LC FNC SWVL	1	EA
10	2010319	COLLAR, PANCAKE 2IN 280T LC FNC SWVL	1	EA
11	203908	DECAL, WARNING CYLINDER	1	EA
12	212044	SPRING COM OD1.505ID.815R70L1.425CS	1	EA
13	214596	DISC, FILTER	1	EA
14	250972	TAPE, RED REFLECTIVE	2.22	FT
15	250973	DECAL, WARNING LOCKING COLLAR	1	EA
16	25600	COUPLER,QUICK CYLINDER HALF	1	EA
17	200019	WASHER, PLAIN 0.51 x 0.75 x 0.37 STEL	1	EA

RGP4302				
ITEM	PART NO.	DESCRIPTION	QTY.	UOM
1	1000956	DECAL, TRADENAME POWER TEAM (3.5 X 20.3)	1	EA
2	12201	RING, RETAIN INT 0.18 X .010	1	EA
3	2009439	WASHER, PLN 1.75x0.69x0.13 ST ZN	1	EA
4	2009362	SEAL, TSEL 10.50INx10.00x0.38 NBR75	1	EA
5	2009427	CAP, SWIVEL 300T ST FNC	1	EA
6	2009436	SCREW, SHOULDER M12x1.75MM - 70MM	1	EA
7	2010322	EYEBOLT, LIFTING M10x1.5 X 15MM	2	EA
8	2010306	CYLINDER, PANCAKE 2IN 430T LC FNC SWVL	1	EA
9	2010313	ROD, PISTON PANCAKE 2IN 430T LC FNC SWVL	1	EA
10	2010320	COLLAR, PANCAKE 2IN 430T LC FNC SWVL	1	EA
11	203908	DECAL, WARNING CYLINDER	1	EA
12	212044	SPRING COM OD1.505ID.815R70L1.425CS	2	EA
13	214596	DISC, FILTER	1	EA
14	250972	TAPE, RED REFLECTIVE	2.73	FT
15	250973	DECAL, WARNING LOCKING COLLAR	1	EA
16	25600	COUPLER,QUICK CYLINDER HALF	1	EA
17	2009440	WASHER, PLN 1.50x0.688x0.08 SS	1	EA

PARTS LIST

RGP5652				
ITEM	PART NO.	DESCRIPTION	QTY.	UOM
1	1000955	DECAL, TRADENAME POWERTEAM (3.5x22.24)	1	EA
2	12201	RING, RETAIN INT 0.18 X .010	1	EA
3	2009363	WASHER, PLN 2.00INx1.06x0.13 ST ZN	2	EA
4	2001803	SEAL, TSEL 12.0INx11.5x0.375 NITR 70	1	EA
5	2009347	CAP, SWIVEL 400T ST FNC	1	EA
6	2009354	SCREW, SHOULDER M16x2MM - 80MM	1	EA
7	2010322	EYEBOLT, LIFTING M10x1.5 X 15MM	2	EA
8	2010307	CYLINDER, PANCAKE 2IN 565T LC FNC SWVL	1	EA
9	2010314	ROD, PISTON PANCAKE 2IN 565T LC FNC SWVL	1	EA
10	2010321	COLLAR, PANCAKE 2IN 565T LC FNC SWVL	1	EA
11	203908	DECAL, WARNING CYLINDER	1	EA
12	212049	SPRING COM OD2.135ID1.175R145L1.370CS	2	EA
13	214596	DISC, FILTER	1	EA
14	250972	TAPE, RED REFLECTIVE	3.13	FT
15	250973	DECAL, WARNING LOCKING COLLAR	1	EA
16	25600	COUPLER,QUICK CYLINDER HALF	1	EA

SEAL KITS

- For RGP672 use Seal Kit No. 3001283
- For RGP1102 use Seal Kit No. 3001276
- For RGP1802 use Seal Kit No. 3001277
- For RGP2202 use Seal Kit No. 3001279
- For RGP2802 use Seal Kit No. 3001280
- For RGP4302 use Seal Kit No. 3001281
- For RGP5652 use Seal Kit No. 3001282