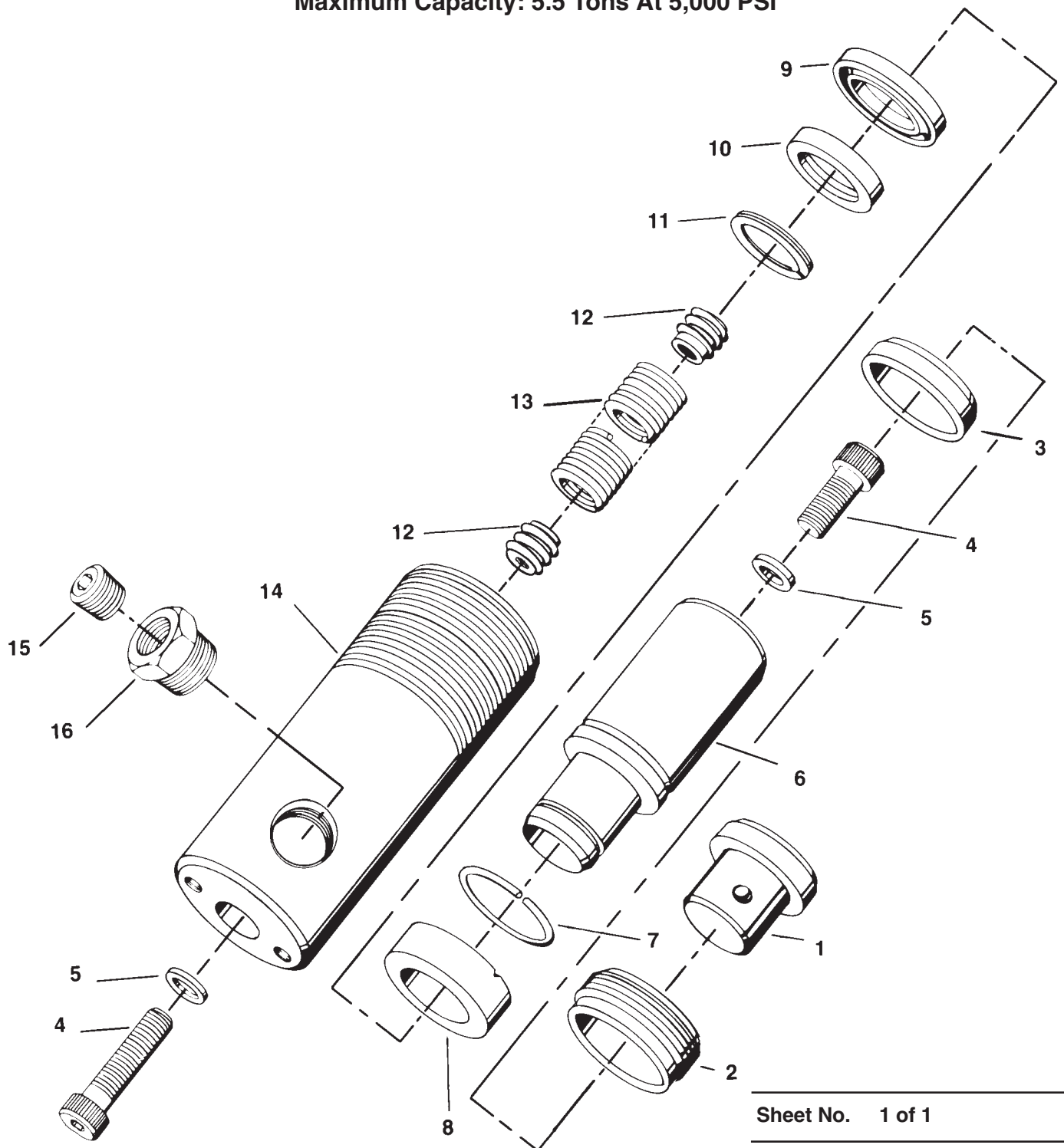


**SINGLE-ACTING, SPRING RETURN
HYDRAULIC CYLINDER**
Maximum Capacity: 5.5 Tons At 5,000 PSI



Item No.	Part No.	No. Req'd	Description
1	201362	1	Adapter
2	201365	1	Retainer Nut (Torque to 500/525 in. lbs.)
3	*†201429	1	Rod Wiper
4	17203	2	Low Soc. Hd. Cap Screw (1/4-20 X 7/8 Lg.; Torque to 50/70 in. lbs.)
5	*†10442	2	Copper Washer (3/8 X 1/4 X 1/32)
6	38061	1	Piston Rod
7	201433	1	Retaining Ring
8	201363	1	Piston Head (Assemble with groove toward shoulder)
9	*16067	1	U-cup (Piston Seal)
	†205704	1	U-cup
10	201359	1	Slip Retainer
11	*16076	1	Retaining Ring
12	204414	2	Spring Retainer
13	204249	1	Extension Spring (Spring must not extend beyond threads of spring retainer [both ends]. Stretch, clean and lubricate before assembly.)
14	204985	1	Cylinder Body
15	10479	1	Pipe Plug (1/4 NPTF)
16	10676	1	Reducing Bushing (3/8 - 1/4)

PARTS INCLUDED BUT NOT SHOWN

†19526	1	O-ring (1" X 3/4 X 1/8; For coupler)
†206554	1	U-cup Backup Washer (Teflon)
†205724	1	Decal (Viton)
216419	1	Trade Name Decal

Part Numbers marked with an asterisk (*) are contained in Standard Repair Kit No. 300116.
Part numbers marked with dagger (†) are contained in Viton Seal Kit No. 300211.

Refer to any operating instructions included with this product for detailed information about operation, testing, disassembly, reassembly, and preventive maintenance.

Items found in this parts list have been carefully tested and selected. **Therefore: Use only genuine Hytec replacement parts!**

Additional questions can be directed to our Technical Services Department.