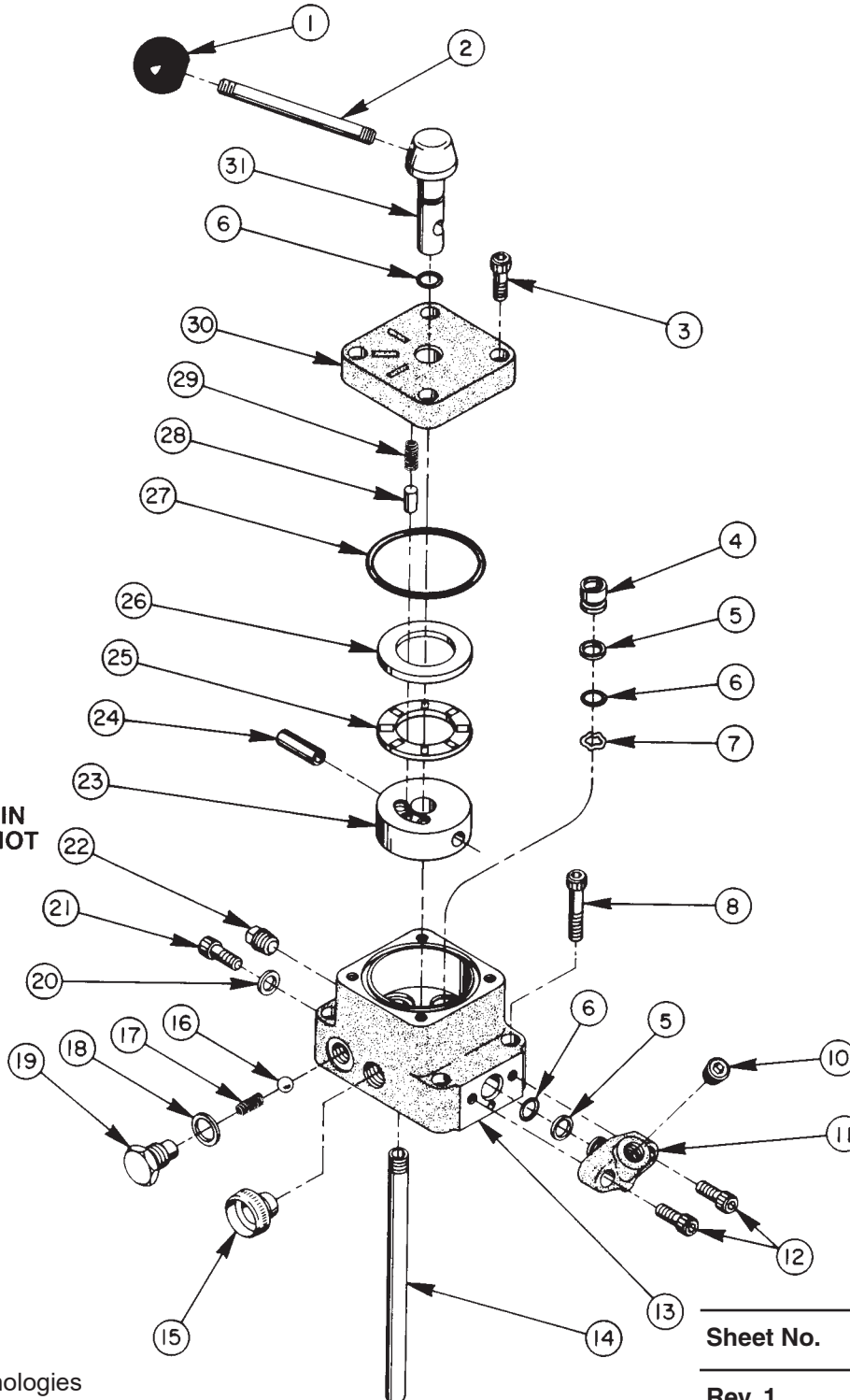


Parts List for:

9588
33184
V33C
Y-33184

**3 POSITION, 3-WAY MANUAL, CLOSED CENTER
NON-INTERFLOW, PUMP MOUNTED
VALVE ASSEMBLY**
Max. Capacity: 10,000 PSI

ITEM 22
MUST REMAIN
PLUGGED. NOT
A CYLINDER
PORT.



Parts List, Form No. 100326, Back sheet 1 of 1

Item No.	Part No.	No. Req'd	Description
1	10731	1	Knob (1-3/8 Dia.)
2	21639	1	Stud
3	10008	4	Soc. Hd. Cap Screw (1/4-20 X 3/4 Lg.)
4	21921	3	Seal
5	*11863	4	Backup Washer (Teflon, -012)
6	*10268	5	O-ring (3/8 X 1/2 X 1/16, -012)
7	*21975	3	Spring Washer
8	10020	4	Soc. Hd. Cap Screw (1/4-20 X 1-1/4 Lg.)
10	10479	1	Pressure Plug (1/4 NPTF)
11	20866	1	Gauge Fitting
12	10006	2	Soc. Hd. Cap Screw (1/4-20 X 5/8 Lg.)
13	41098	1	Valve Body
14	20847	1	Drain Line
15	11036	1	Plug
16	10378	1	Steel Ball (3/8 Dia.)
17	12195	1	Compression Spring (1/4 O.D. X 1/2 Lg.)

Item No.	Part No.	No. Req'd	Description
18	*10901	1	Brass Washer (11/16 X 1/2 X 1/16)
19	27329	1	Valve Screw
20	11031	1	Washer (15/32 X 5/16 X 1/32 Thk.)
21	11006	1	Soc. Hd. Cap Screw (5/16-18 X 3/8 Lg.)
22	11127	1	Pipe Plug (3/8 NPTF)
23	33183	1	Rotor
24	10496	1	Roll Pin (5/16 X 1" Lg.)
25	11228	1	Needle Bearing
26	11227-1	1	Bearing Race
27	*11229	1	O-ring (2-3/8 X 2-3/16 X 3/32, -139)
28	21919	1	Detent Pin
29	11024	1	Compression Spring (1/4 O.D. X 5/8 Lg.)
30	21966	1	Valve Body Cap
31	21920	1	Valve Stem

PARTS INCLUDED BUT NOT SHOWN

205395	1	Trade Name Decal (For V33C)
208408	1	Corporate Decal (For 9588)

Part numbers marked with an asterisk (*) are contained in Repair Kit No. 300139.

SPECIFICATIONS

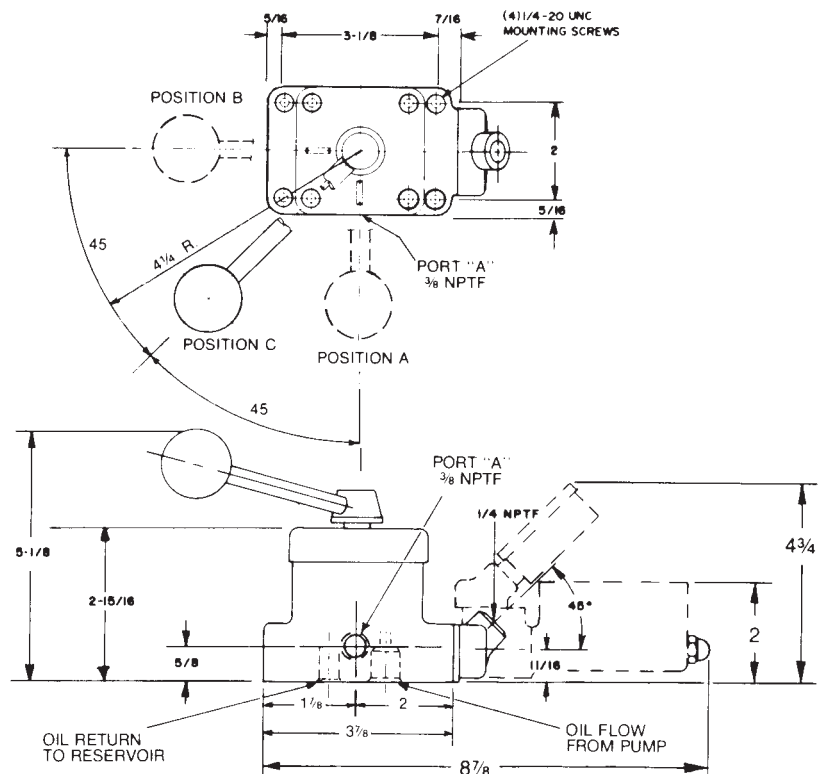
This is a pump mounted, manually-operated, detent 3-position, 3-way valve for use with power units. It is of a low torque design for use with single-acting or spring return cylinders. A pressure switch and/or gauge may be attached if required.

OPERATION

- POSITION "A":** Cylinder Port "A" to tank.
POSITION "B": Pressure to Cylinder Port "A".
POSITION "C": Neutral. Cylinder port "A" is blocked, thereby maintaining pressure to cylinder. All other ports blocked.

NOTE: Pressure holds without loss when shifted from the cylinder port to "hold" position.

Port Sizes: 3/8 NPTF
 Maximum Pressure: 10,000 PSI
 Maximum Recommended Flow: 5 GPM



J.I.C. SYMBOL

