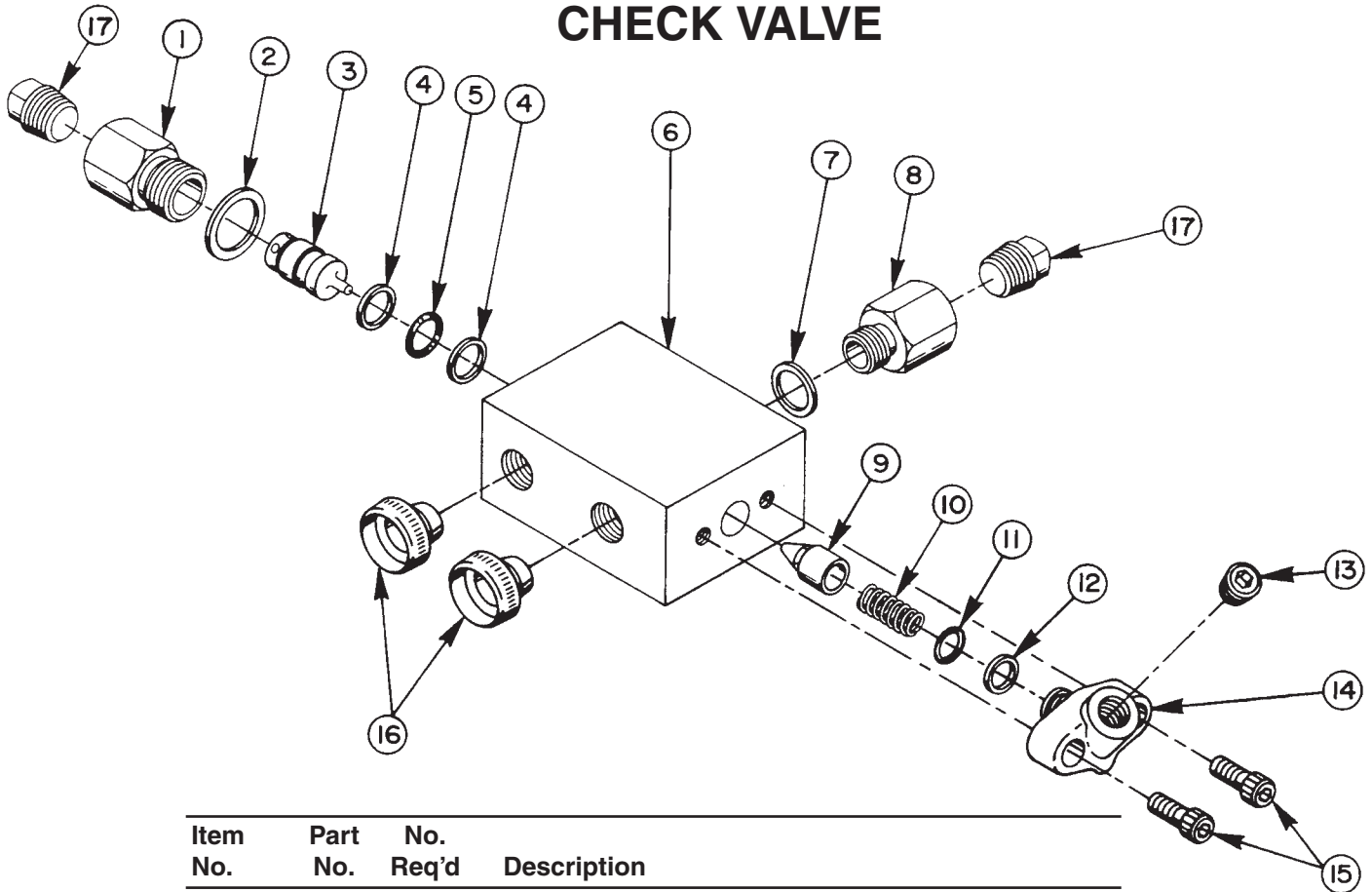


## PILOT OPERATED CHECK VALVE



Item No.	Part No.	No. Req'd	Description
1	205956	1	Straight Fitting
2	*10263	1	Copper Washer
3	21864	1	Valve Piston
4	*12390	2	Backup Washer (5/8 x 1/2 x 1/16, -014)
5	*10301	1	O-ring (5/8 x 1/2 x 1/16 CS, -014)
6	30859	1	Valve Body
7	*10261	1	Soft Copper Washer
8	205955	1	Straight Fitting
9	20771	1	Poppet
10	10425	1	Spring
11	*10268	1	O-ring (1/2 x 3/8 x 1/16, -012)
12	*11863	1	Backup Washer (Teflon -012)
13	10479	1	Pipe Plug (1/4 NPTF)
14	20866	1	Gauge Fitting
15	10006	2	Soc. Hd. Cap Screw (1/4-20 x 5/8 Lg.)
16	11036	2	Aluminum Cap
17	11127	2	Plug

Part numbers marked with an asterisk (\*) are contained in Repair Kit No. 27345.

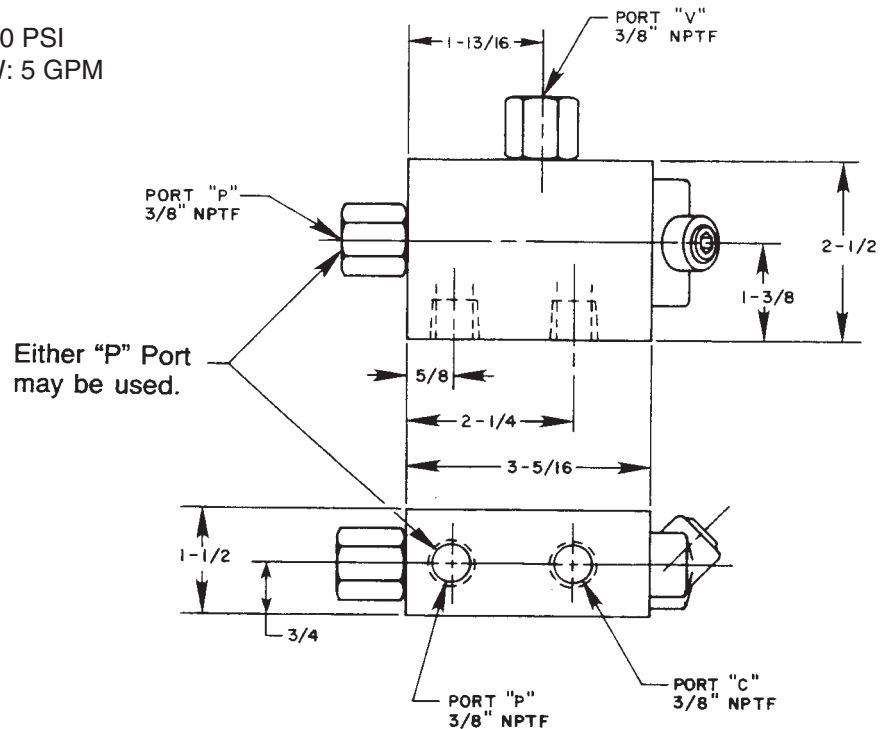
Sheet No. 1 of 1

Rev. 1 Date: 12 Mar 2003

## SPECIFICATIONS

This valve is intended for use with double-acting cylinders in circuits employing 3-position, 4-way tandem or open center valves without posi-check. Leakage normally associated with this type of valve when in the neutral position is eliminated . . . allowing pressure to be maintained in the cylinder. This valve is ideal for clamping operations where leakage must be avoided in order to maintain clamping pressure . . . also adaptable to special applications using other types of 4-way valves. A pressure switch and/or gauge may be attached if required.

PORT SIZES: 3/8" NPTF  
 MAXIMUM PRESSURE: 10,000 PSI  
 MAX. RECOMMENDED FLOW: 5 GPM



## TYPICAL HYDRAULIC CIRCUITS

Double-acting cylinder with a remote mounted, pilot operated check valve. (Holds cylinder pressure when valve lever is in neutral position.)

Double-acting cylinder with remote control valve and a remote pilot operated check valve. (Holds cylinder pressure when valve lever is in neutral position.)

