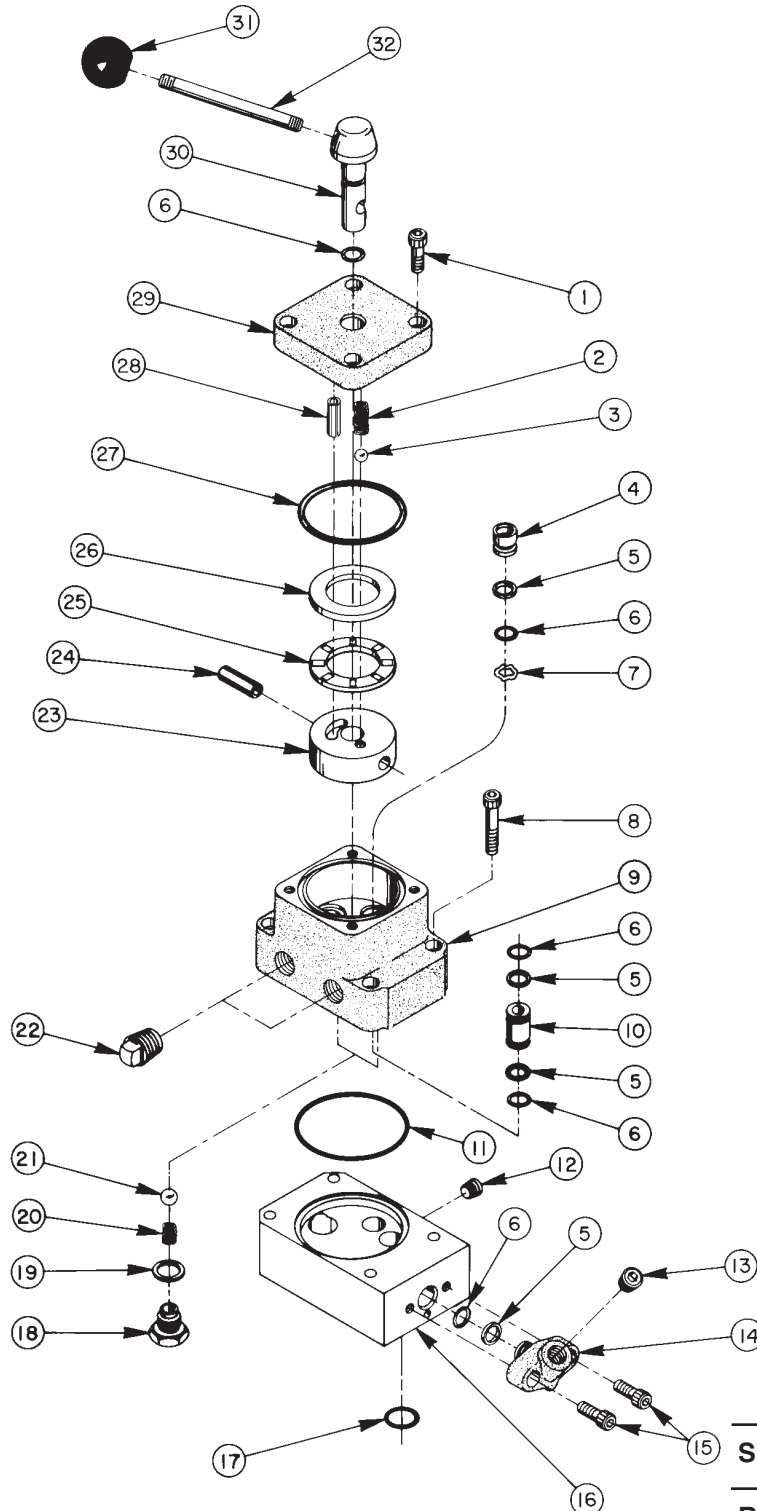


**3 POSITION, 4-WAY MANUAL – CLOSED CENTER – PUMP MOUNTED  
 VALVE ASSEMBLY**  
 Maximum Capacity: 10,000 PSI



# Parts List, Form No. 100379, Back sheet 1 of 1

Item No.	Part No.	No. Req'd	Description	Item No.	Part No.	No. Req'd	Description
1	10008	4	Soc. Hd. Cap Screw (1/4-20 X 3/4 Lg.)	18	29784	2	Valve Screw (Torque to 30/35 ft. lbs.)
2	16320	1	Compression Spring	19	*14874	2	Copper Washer
3	10375	1	Steel Ball (1/4 dia.)	20	10444	2	Compression Spring
4	202480	5	Seal	21	10378	2	Steel Ball (3/8 Dia.)
5	*11863	8	Backup Washer (Teflon)	22	11127	2	Pipe Plug (3/8 NPTF)
6	*10268	9	O-ring (1/2 X 3/8 X 1/16)	23	37295	1	Rotor
7	*21975	5	Spring Washer	24	10496	1	Roll Pin (5/16 X 1" Lg.)
8	10855	4	Soc. Hd. Cap Screw (1/4-20 X 2 3/4 Lg.)	25	11228	1	Needle Bearing
9	50957	1	Valve Body	26	11227-1	1	Bearing Race
10	202505	1	Bushing	27	*11229	1	O-ring (2 3/8 X 2 3/16 X 3/32)
11	*16670	1	O-ring (2 1/2 X 2 3/8 X 1/16)	28	11916	1	Roll Pin (1/4 X 7/8 Lg.)
12	10427	1	Pipe Plug (1/8 NPTF)	29	36788	1	Valve Body Cap
13	10479	1	Pipe Plug (1/4 NPTF)	30	21920	1	Valve Stem
14	20866	1	Gauge Fitting	31	10731	1	Knob
15	10006	2	Soc. Hd. Cap Screw (1/4-20 X 5/8 Lg.)	32	21639	1	Stud
16	51045	1	Sub Plate	<b>PARTS INCLUDED BUT NOT SHOWN</b>			
17	*10302	1	O-ring (3/4 X 5/8 X 1/16)	205391	1	Decal, Trade Name (For V34C)	
				202506	1	Decal, Porting	
				208410	1	Decal, Corporate (For 9591)	

Part numbers marked with an asterisk (\*) are contained in Repair Kit No. 300139.

## SPECIFICATIONS

This is a pump mounted, manually-operated, detent 3-position, 4-way valve for use with power units. It is of a low torque design for use with double-acting cylinders. A pressure switch and/or gauge may be attached if required.

### OPERATION

- NEUTRAL (Hold):** All ports blocked.  
**POSITION "A":** Pressure to Port "A", Port "B" to tank.  
**POSITION "B":** Pressure to Port "B", Port "A" to tank.

**NOTE:** Pressure holds without loss when shifted from either cylinder port to "hold position."

Port Sizes: 3/8 NPTF  
 Maxium Pressure: 10,000 PSI  
 Maximum Recommended Flow: 5 GPM

