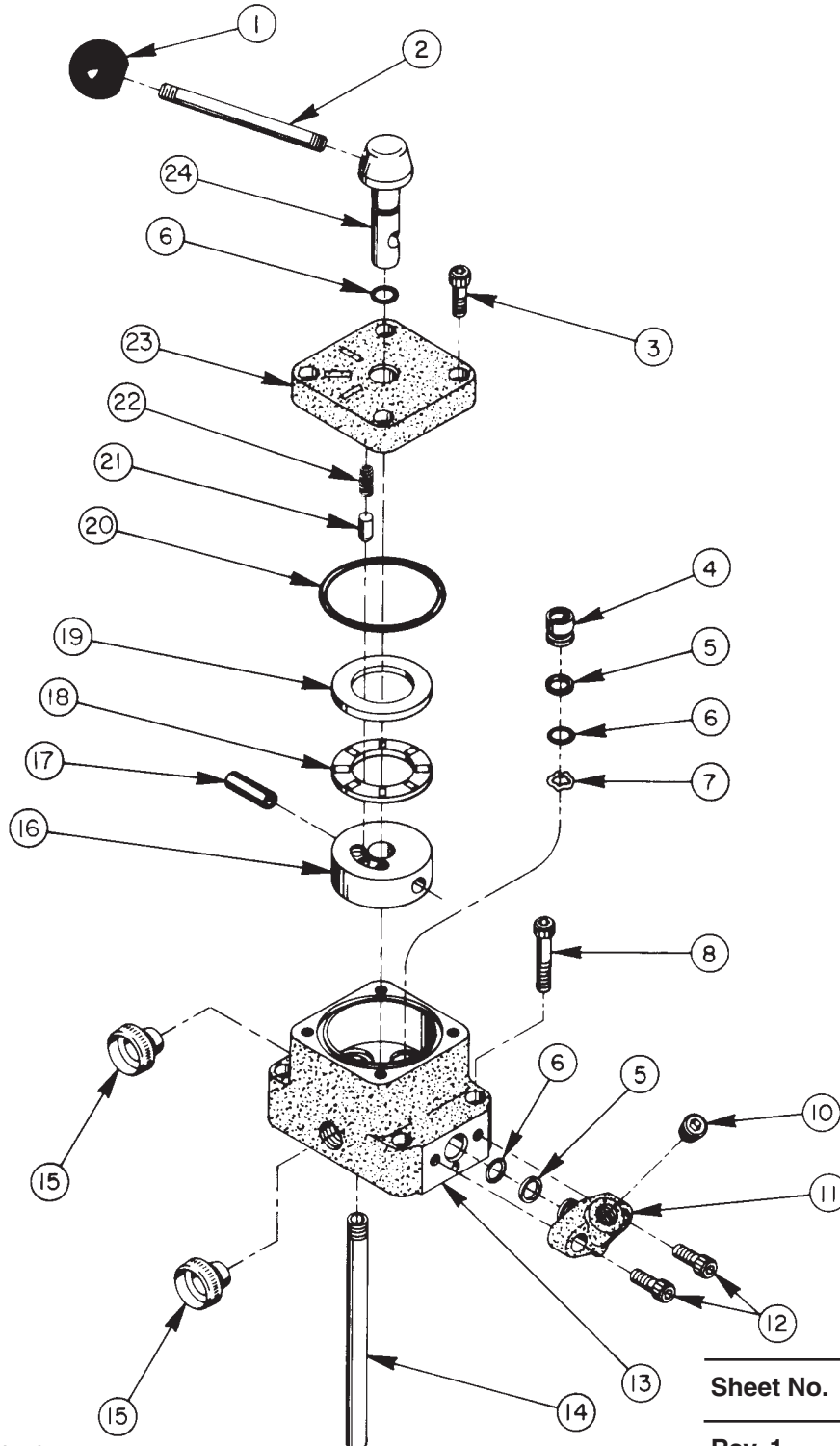


Parts List for:

9586  
19022

31094  
V34B  
Y-31094

**3 POSITION, 4-WAY MANUAL - OPEN CENTER - PUMP MOUNTED  
VALVE ASSEMBLY**  
Max. Capacity: 10,000 PSI



# Parts List, Form No. 100388, Back sheet 1 of 1

Item No.	Part No.	No. Req'd	Description
1	10731	1	Knob
2	21639	1	Stud
3	10008	4	Soc. Hd. Cap Screw (1/4-20 UNC X 3/4 Lg.)
4	21921	3	Seal
5	*11863	4	Backup Washer (1/2 X 3/8 X 1/16, -012)
6	*10268	5	O-ring (1/2 X 3/8 X 1/16, -012)
7	*21975	3	Spring Washer
8	10020	4	Soc. Hd. Cap Screw (1/4-20 UNC X 1-1/4 Lg.)
10	10479	1	Pipe Plug (1/4 NPTF)
11	20866	1	Gauge Fitting
12	10006	2	Soc. Hd. Cap Screw (1/4-20 UNC X 5/8 Lg.)
13	40289	1	Valve Body

Item No.	Part No.	No. Req'd	Description
14	20847	1	Drain Line
15	11036	2	Plug
16	30905	1	Rotor
17	10496	1	Roll Pin (5/16 Dia. X 1" Lg.)
18	11228	1	Needle Bearing
19	11227-1	1	Bearing Race
20	*11229	1	O-ring (2-3/8 X 2-3/16 X 3/32, -139)
21	21919	1	Detent Pin
22	11024	1	Compression Spring (1/4 O.D. X 5/8 Lg.)
23	21966	1	Valve Body Cap
24	21920	1	Valve Stem

## PART INCLUDED BUT NOT SHOWN

208700 1 Decal (For 9586)

Part numbers marked with an asterisk (\*) are contained in Repair Kit No. 300139.

## SPECIFICATIONS

This is a pump mounted, manually-operated, detent 3-position, 4-way valve for use with power units. It is of a low torque design for use with double-acting cylinders. A pressure switch and/or gauge may be attached if required.

### OPERATION

**Position "A":** Pressure to Port "A", Port "B" to tank.

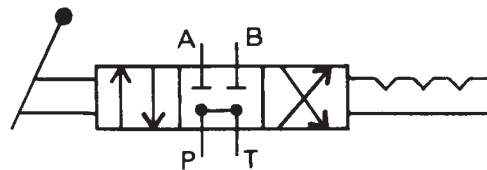
**Position "B":** Pressure to Port "B", Port "A" to tank.

**Position "C":** Neutral. Cylinder ports "A" and "B" are blocked, thereby maintaining pressure. Oil circulates through valve from pump to tank.

Port Sizes: 3/8 NPTF

Maximum Pressure: 10,000 PSI

Maximum Recommended Flow: 5 GPM



J.I.C. SYMBOL

