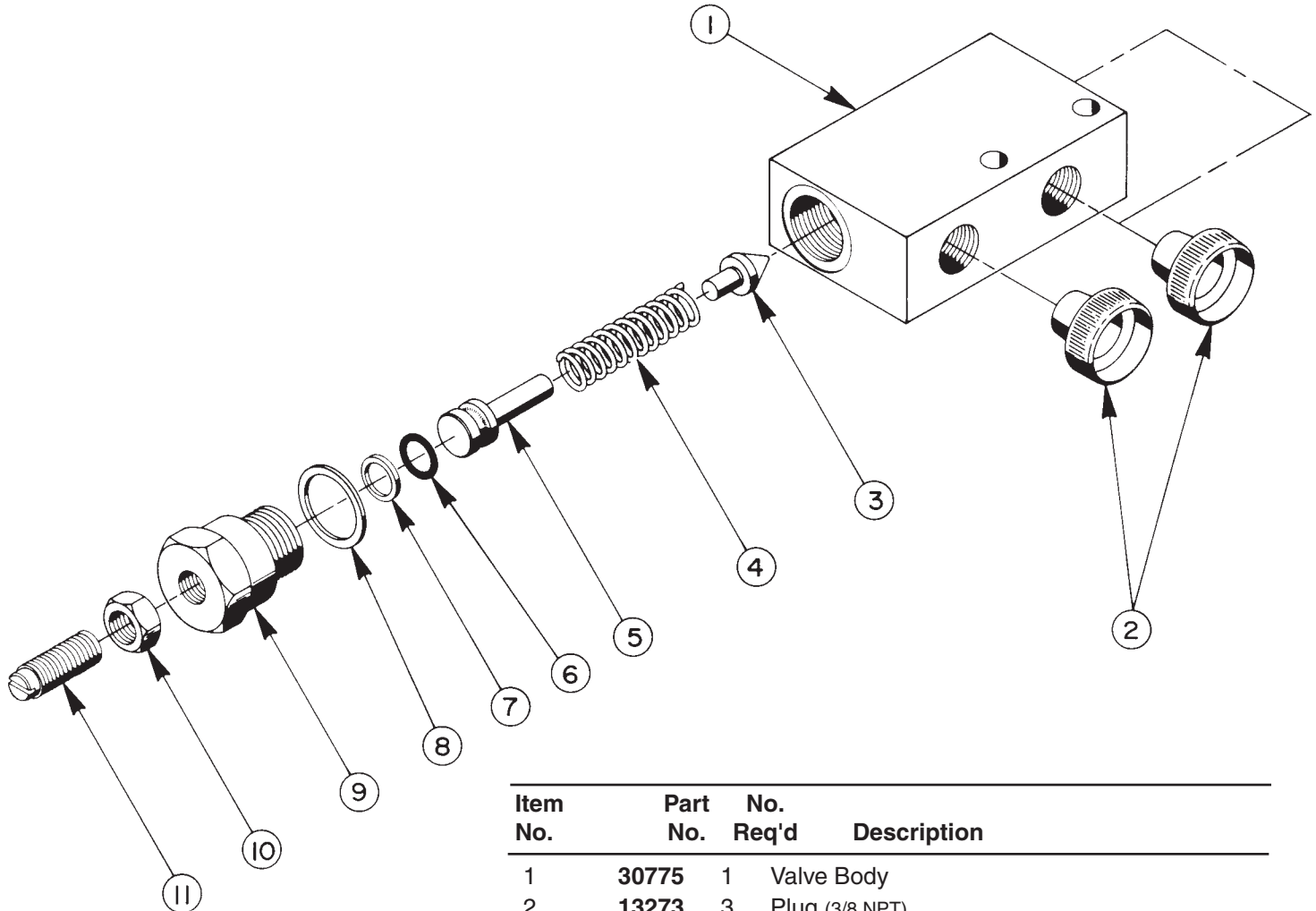


Parts List for:

9623  
30776  
V38PR  
Y-30776

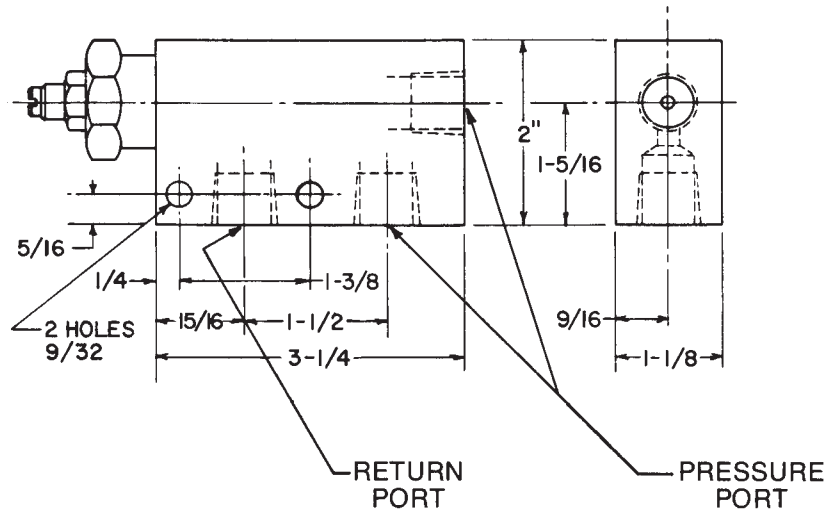
**ADJUSTABLE, REMOTE MOUNTED  
PRESSURE REGULATOR VALVE**  
Max. Capacity: 10,000 PSI



Item No.	Part No.	No. Req'd	Description
1	30775	1	Valve Body
2	13273	3	Plug (3/8 NPT)
3	21046	1	Valve Stem
4	10495	1	Compression Spring (1/2 O.D. X 1-5/8 Lg.)
5	21306	1	Spring Guide
6	10268	1	O-ring (1/2 X 3/8 X 1/16, -012)
7	11863	1	Backup Washer (Teflon -012)
8	10263	1	Copper Washer (1" X .765 X 1/32)
9	21305	1	Valve Cap
10	10386	1	Hex Nut
11	22362	1	Adjusting Screw

## SPECIFICATIONS

A spring-loaded, direct-acting relief valve which can be easily adjusted for actuation from 1,000 PSI to 10,000 PSI. Designed for remote locations in hydraulic circuits where maximum pressure requirements are less than the setting of the basic overload valve setting in the pump.



PORT SIZES:  $\frac{3}{8}$ " NPTF  
MAXIMUM PRESSURE: 10,000 PSI  
MAX. RECOMMENDED FLOW: 5 GPM

Refer to any operating instructions included with this product for detailed information about operation, testing, disassembly, reassembly, and preventive maintenance.

Items found in this parts list have been carefully tested and selected. **Therefore: Use only genuine replacement parts!**

Additional questions can be directed to our Technical Services Department.