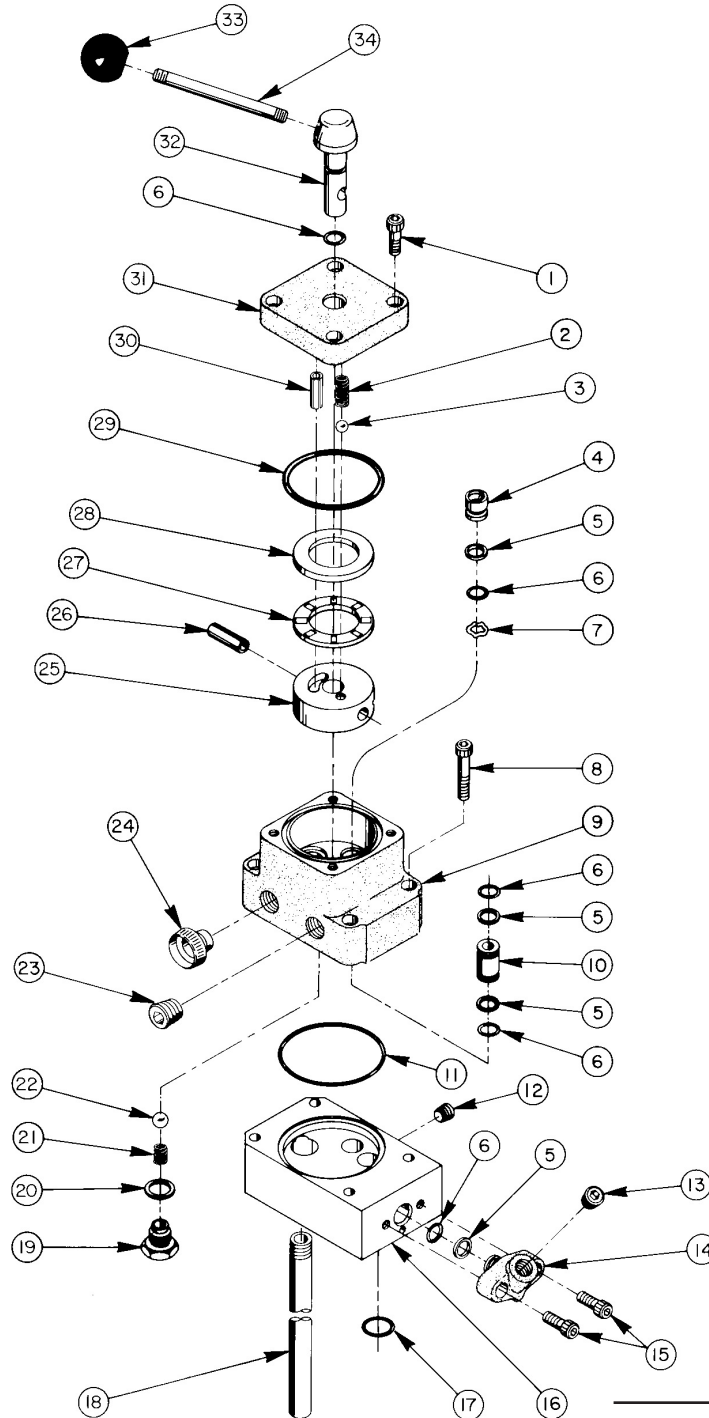


**3 POSITION, 3-WAY MANUAL – TANDEM CENTER – PUMP MOUNTED
VALVE ASSEMBLY**
Maximum Capacity: 10,000 PSI

ITEM 23
MUST REMAIN
PLUGGED. NOT
A CYLINDER
PORT.



Parts List, Form No. 100420, Back sheet 1 of 1

| Item No. | Part No. | No. Req'd | Description |
|----------|----------|-----------|--|
| 1 | 10008 | 4 | Cap Screw (1/4-20 X 3/4 Lg.) |
| 2 | 16320 | 1 | Compression Spring |
| 3 | 10375 | 1 | Steel Ball (1/4" Dia.) |
| 4 | 202480 | 3 | Seal |
| 5 | *11863 | 6 | Backup Washer (Teflon) |
| 6 | *10268 | 7 | O-ring (3/8 X 1/2 X 1/16) |
| 7 | *21975 | 3 | Spring Washer |
| 8 | 10855 | 4 | Cap Screw (1/4-20 X 2-3/4" Lg.) |
| 9 | 50957 | 1 | Valve Body |
| 10 | 202505 | 1 | Bushing |
| 11 | *16670 | 1 | O-ring (2-1/2" X 2-3/8" X 1/16) |
| 12 | 10427 | 1 | Pipe Plug (1/8 NPTF) |
| 13 | 10479 | 1 | Pipe Plug (1/4 NPTF) |
| 14 | 20866 | 1 | Gauge Fitting |
| 15 | 10006 | 2 | Cap screw (1/4-20 X 5/8 Lg.) |
| 16 | 51045 | 1 | Sub Plate |
| 17 | *10302 | 1 | O-ring (3/4 X 5/8 X 1/16) |
| 18 | 200609 | 1 | Drain Tube |
| 19 | 29784 | 1 | Valve Screw (Torque to 30/35 ft. lbs.) |
| 20 | *14874 | 1 | Copper Washer |
| 21 | 10444 | 1 | Compression Spring |

| Item No. | Part No. | No. Req'd | Description |
|----------|----------|-----------|----------------------------------|
| 22 | 10378 | 1 | Steel Ball (3/8 Dia.) |
| 23 | 10909 | 1 | Pipe Plug (3/8 NPTF) |
| 24 | 11036 | 1 | Aluminum Plug (3/8 NPTF) |
| 25 | 36789 | 1 | Rotor |
| 26 | 10496 | 1 | Roll Pin (5/16 X 1" Lg.) |
| 27 | 11228 | 1 | Needle Bearing |
| 28 | 11227-1 | 1 | Bearing Race |
| 29 | *11229 | 1 | O-ring (2-3/8" X 2-3/16" X 3/32) |
| 30 | 11916 | 1 | Roll Pin (1/4 X 7/8 Lg.) |
| 31 | 36788 | 1 | Valve Body Cap |
| 32 | 21920 | 1 | Valve Stem |
| 33 | 10731 | 1 | Knob |
| 34 | 21639 | 1 | Stud |

PARTS INCLUDED BUT NOT SHOWN

| | | |
|--------|---|----------------------------|
| 202516 | 1 | Porting Decal |
| 202518 | 1 | Trade Name Decal (For V33) |
| 204425 | 1 | Patent Decal |
| 208416 | 1 | Corporate Decal (For 9577) |

Part numbers marked with an asterisk (*) are contained in Repair Kit No. 300139.

SPECIFICATIONS

This is a pump mounted, manually-operated, detent 3-position, 3-way valve for use with power units. It is of a low torque design for use with single-acting or spring return cylinders. A pressure switch and/or gauge may be attached if required.

OPERATION

- POSITION "A":** Pressure to Port "A"
- POSITION "B":** Port "A" to tank.
- POSITION "C":** Neutral. Cylinder port "A" is blocked thereby maintaining pressure. Oil circulates through valve from pump to tank.

NOTE: Pressure holds without loss when shifted from the cylinder port to "hold" position.

Port Sizes: 3/8 NPTF
 Maximum Pressure: 10,000 PSI
 Maximum Recommended Flow: 5 GPM

J.I.C. SYMBOL

