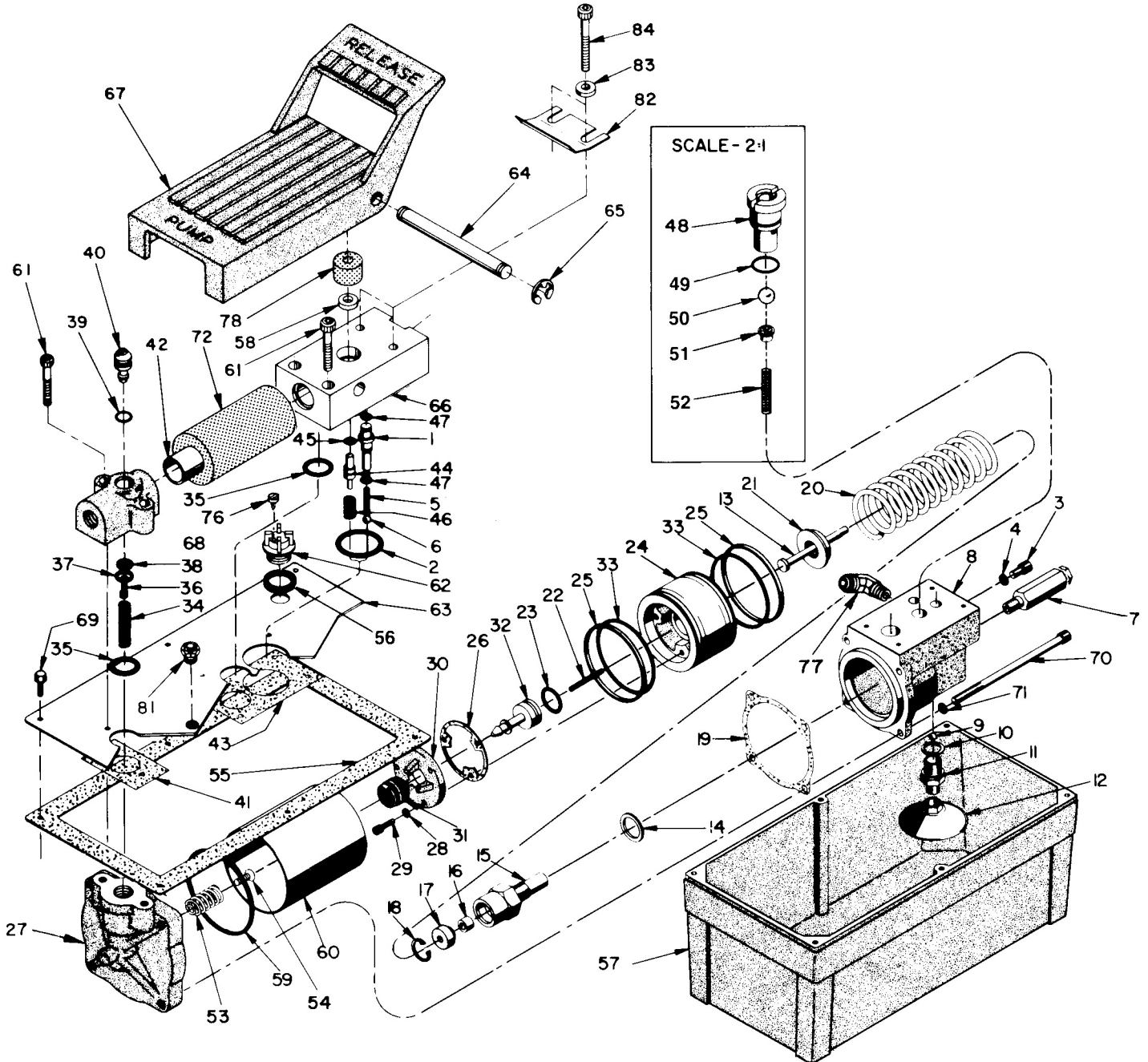


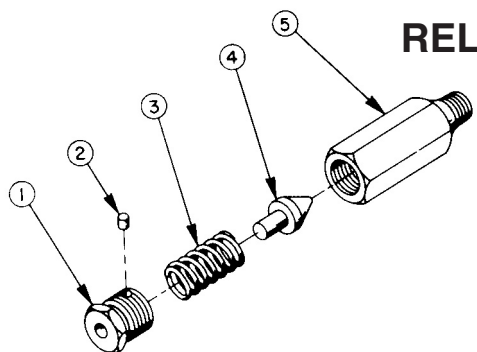
MODEL C
AIR HYDRAULIC PUMP
FOOT/HAND OPERATED
Maximum Capacity: 3,200 PSI



Parts List, Form No. 100423, Back sheet 1 of 1

Item No.	Part No.	No. Req'd	Description	Item No.	Part No.	No. Req'd	Description
1	34378	1	Check Valve Body	45	*10266	1	O-ring
2	*10281	1	O-ring	46	*13944	1	Compression Spring
3	10002	1	Cap Screw (1/4-20 X 3/8 Lg.)	47	*12522	2	O-ring
4	*10442	1	Copper Washer	48	34377	1	Poppet Retainer
5	*10445	1	Compression Spring	49	*13943	1	O-ring
6	*10423	1	Steel Ball	50	*10375	1	Steel Ball
7	21278-32		Relief Valve Assembly - 3,200 PSI (See Below)	51	25685	1	Spring & Ball Adapter
8	50494	1	Pump Body	52	14624	1	Compression Spring
9	*10375	1	Steel Ball	53	*205679	1	Spring
10	*10261	1	Copper Washer	54	*205674	1	Cap Screw (Torque to 12/18 in. lbs.)
11	33848	1	Filter Adapter (Torque to 40/45 ft. lbs. oiled)	55	*33853	1	Reservoir Gasket
12	27680	1	Filter Assembly	56	*200415	1	Rubber Gasket
13	28400	1	Piston	57	41300BL2	1	Reservoir
14	*10263	1	Copper Washer	58	*15620	1	Shaft Seal
15	33959	1	Cylinder (Torque to 90/100 ft. lbs. oiled)	59	*17429	1	Backup Ring
16	*14121	1	U-cup	60	37434	1	Air Cylinder (Locate groove toward top near cover plate)
17	202624	1	Retainer	61	11151	4	Cap Screw (#10-24 X 1-1/4" Lg.)
18	*11034	1	Retaining Ring	62	20937	1	Filler Plug
19	*28979	1	Gasket	63	44027WH2	1	Cover Plate
20	*13938	1	Compression Spring	64	28386	1	Pin
21	28395	1	Spring Guide	65	11032	2	Retaining Ring
22	*12692	1	Spring	66	51762	1	Release Valve Body
23	*10303	1	O-ring	67	41322	1	Foot Pedal
24	33824	1	Piston Body	68	33843	1	Intake Air Valve Body
25	*14265	2	Piston Ring	69	14456	6	Screw (Torque to 25/30 in. lbs.)
26	*28239	1	Gasket	70	17428	4	Cap Screw (1/4-20 X 4" Lg.; Torque to 90/100 in. lbs. oiled. Note: Cross torque in increments of 50 in. lbs.)
27	51480	1	Rear Head	71	15823	4	Lockwasher
28	10241	3	Lockwasher	72	*29992	1	Foam Tube
29	11434	3	Cap Screw (#10-24 X 1/2 Lg.; Torque to 50/55 in. lbs.)	76	206333	1	Self-Tapping Screw
30	33822	1	Piston End Plate	77	12162	1	Elbow, 90°
31	*28183	1	Piston Poppet	78	*206504	1	Foam Tube
32	33845	1	Exhaust Valve Stem	81	18317	1	Relief Valve Fitting (Torque to 75/85 in. lbs.)
33	*11229	2	O-ring	82	302466	1	Spring Clip
34	*12691	1	Compression Spring	83	206857	2	Washer
35	*10276	2	O-ring	84	11435	2	Cap Screw (#10-24 X 1-3/4" Lg.)
36	13936	1	Cap Screw (#8-32 X 1/4 Lg.)	MISC. DECALS INCLUDED BUT NOT SHOWN			
37	28198	1	Seal Guide	*14350	1	Caution Decal	
38	*28182	1	Air Valve Poppet	*15411	1	Patent Decal	
39	*10267	1	O-ring	*206172	1	Venting Decal	
40	33841	1	Actuator Button	14225	2	Trade Name Decal (For Y14)	
41	*28858	1	Gasket	304710	2	Trade Name Decal (For 4023)	
42	28387	1	Muffler				
43	*34283	1	Gasket				
44	29365	1	Release Valve Button				

NOTE: Part numbers marked with an asterisk (*) are included in Repair Kit No. 300132.



RELIEF VALVE ASSEMBLY

Item No.	Part No.	No. Req'd	Description
1	24471	1	Adjusting Plug
2	24463	1	Insert
3	10428	1	Spring
4	21046	1	Cone
5	21286	1	Valve Body

Refer to any operating instructions included with this product for detailed information about operation, testing, disassembly, reassembly, and preventive maintenance.

Items found in this parts list have been carefully tested and selected. **Therefore: Use only genuine replacement parts!**

Additional questions can be directed to our Technical Services Department.