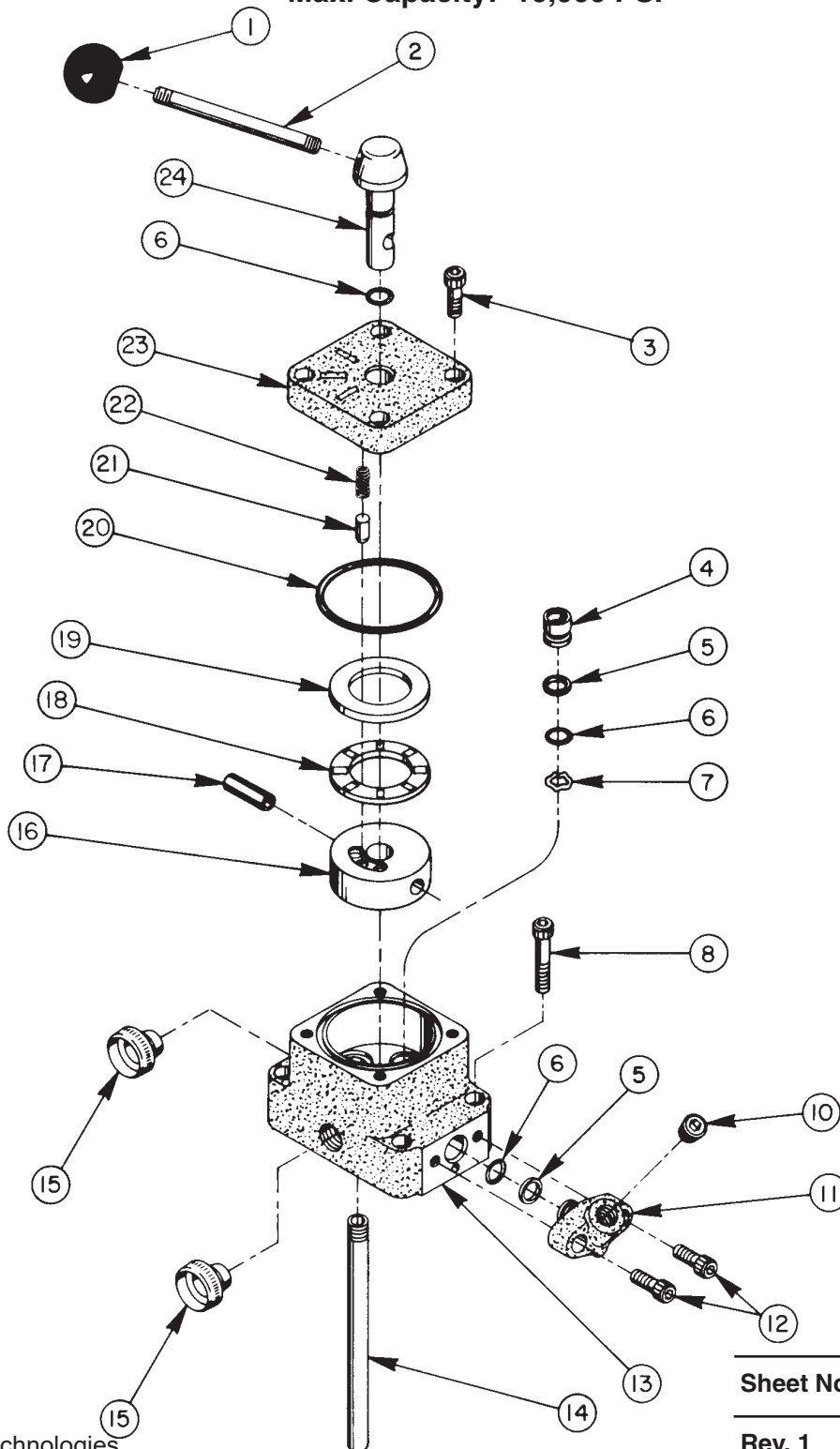


**3 POSTION, 4-WAY -- MANUAL -- CLOSED CENTER -- PUMP MOUNTED
 VALVE ASSEMBLY**
 Max. Capacity: 10,000 PSI



Parts List, Form No. 100472, Back sheet 1 of 1

Item No.	Part No.	No. Req'd	Description
1	10731	1	Knob (1-3/8 Dia.)
2	21639	1	Stud
3	10008	4	Soc. Hd. Cap Screw (1/4-20 X 3/4 Lg.)
4	21921	3	Seal
5	*11863	4	Backup Washer (Teflon, -012)
6	*10268	5	O-ring (3/8 X 1/2 X 1/16, -012)
7	*21975	3	Spring Washer
8	10020	4	Soc. Hd. Cap Screw (1/4-20 X 1-1/4 Lg.)
10	10479	1	Pipe Plug (1/4 NPTF)
11	20866	1	Gauge Fitting
12	10006	2	Soc. Hd. Cap Screw (1/4-20 X 5/8 Lg.)

Item No.	Part No.	No. Req'd	Description
13	40289	1	Valve Body
14	20847	1	Drain Line
15	11036	2	Plug (3/8 - Alum.)
16	31096	1	Rotor
17	10496	1	Roll Pin (5/16 X 1" Lg.)
18	11228	1	Needle Bearing
19	11227-1	1	Bearing Race
20	*11229	1	O-ring (2-3/8 X 2-3/16 X 3/32, -139)
21	21919	1	Detent Pin
22	11024	1	Compression Spring
23	21966	1	Valve Body Cap
24	21920	1	Valve Stem
	208701	1	Trade Name Decal (Not Shown)

Part numbers marked with an asterisk (*) are contained in Repair Kit No. 300139.

SPECIFICATIONS

This is a pump mounted, manually-operated, detent 3-position, 4-way valve for use with power units. It is of a low torque design for use with double-acting cylinders. A pressure switch and/or gauge may be attached if required.

Port Sizes: 3/8 NPTF
 Maximum Pressure: 10,000 PSI
 Maximum Recommended Flow: 5 GPM

OPERATION

POSITION "A": Pressure to Port "A",
 Port "B" to tank.

POSITION "B": Pressure to Port "B",
 Port "A" to tank.

POSITION "C": Neutral, all ports are blocked.

