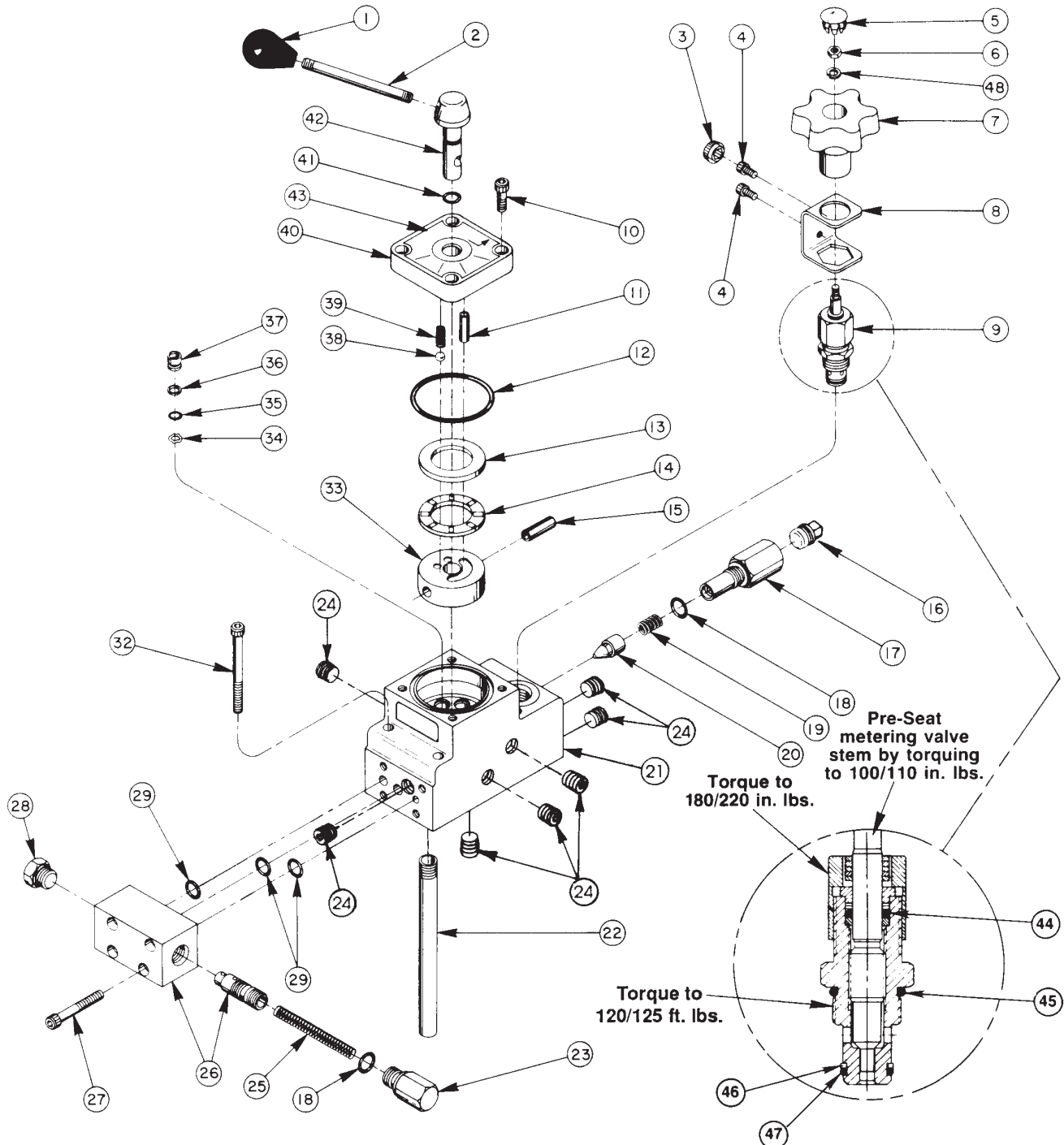


Parts List for:

3482-0008  
 9609  
 60916

**4-POSITION, 3-WAY**  
**MANUAL VALVE ASSEMBLY**  
 VOLUME/FLOW CONTROL --- PRESSURE COMPENSATED  
 Max. Capacity: 10,000 PSI



# Parts List, Form No. 100487, Back sheet 1 of 2

Item No.	Part No.	No. Req'd	Description
1	250885	1	Knob
2	21639	1	Stud
3	207382	1	Plastic Knob
4	11434	2	Soc. Hd. Cap Screw (#10-24 x 1/2 Lg.)
5	11455	1	Snap Plug
6	11010	1	Machine Nut (#10-32 UNF; See note below)
7	44708	1	Valve Knob
8	302956	1	Locking Bracket
9	302938	1	Flow Control Valve
10	10008	4	Soc. Hd. Cap Screw (1/4-20 x 3/4 Lg.; Torque to 100/120 in. lbs.)
11	11916	1	Roll Pin (1/4 dia. x 7/8 Lg.)
12	11229	1	O-ring (2-3/8 x 2-3/16 x 3/32, -139; Nitrile)
	11446	1	O-ring (2-3/8 x 2-3/16 x 3/32, -139; Viton)
	212888	1	O-ring (2-3/8 x 2-3/16 x 3/32, -139; EPR)
13	11227-1	1	Bearing Race
14	11228	1	Thrust Bearing
15	10496	1	Roll Pin (5/16 dia. x 1" Lg.)
16	13273	1	Plug (3/8 NPTF)
17	302939	1	Adapter (Torque to 30/40 ft. lbs.)
18	10300	3	O-ring (.468 I.D. x .078 cs, -906; Nitrile)
	19091	3	O-ring (.468 I.D. x .078 cs, -906; Viton)
	17722	3	O-ring (.468 I.D. x .078 cs, -906; EPR)
19	10425	1	Compression Spring
20	20771	1	Poppet
21	44703	1	Valve Body
22	212998	1	Drain Line (NOTE: Used only when pump-mounted)
23	204748	1	Spring Retainer Fitting (Torque to 30/40 ft. lbs.)
24	15130	7	Pipe Plug (1/16 NPTF)
25	207404	1	Compression Spring (5/16 O.D. x 2-7/16 Lg.)
26	302953	1	Spool & Body Assembly (Consists of 44704 & 44705 which must be ordered as a set)
27	10022	4	Soc. Hd. Cap Screw (Torque to 100/120 in. lbs.)
28	11953	1	Plug (O-ring included; Torque to 30/40 ft. lbs.)
29	10269	3	O-ring (3/8 x 9/16 x 3/32, -110; Nitrile)
	18996	3	O-ring (3/8 x 9/16 x 3/32, -110; Viton)
	12416	3	O-ring (3/8 x 9/16 x 3/32, -110; EPR)
32	10855	4	Soc. Hd. Cap Screw (1/4-20 x 2-3/4 Lg.)
33	44686	1	Rotor
34	12187	4	Spring Washer
35	10266	4	O-ring (1/4 x 3/8 x 1/16, -010; Nitrile)
	11438	4	O-ring (1/4 x 3/8 x 1/16, -010; Viton)
	17715	4	O-ring (1/4 x 3/8 x 1/16, -010; EPR)
36	12184	4	Backup Washer (Teflon)
37	207381	4	Shear Seal
38	10375	1	Steel Ball (1/4 dia.)
39	16320	1	Compression Spring (1/4 O.D. x 3/4 Lg.)
40	201814	1	Valve Body Cap
41	10268	1	O-ring (3/8 x 1/2 x 1/16, -012; Nitrile)
	11439	1	O-ring (3/8 x 1/2 x 1/16, -012; Viton)
	17716	1	O-ring (3/8 x 1/2 x 1/16, -012; EPR)
42	207380	1	Valve Stem
43	207399	1	Porting Decal

Item No.	Part No.	No. Req'd	Description
44	10267	1	O-ring (7/16 x 5/16 x 1/16, -011; Nitrile)
	18974	1	O-ring (7/16 x 5/16 x 1/16, -011; Viton)
	13472	1	O-ring (7/16 x 5/16 x 1/16, -011; EPR)
45	10527	1	O-ring (13/16 x .644 x .087, -908; Nitrile)
	11450	1	O-ring (13/16 x .644 x .087, -908; Viton)
	17723	1	O-ring (13/16 x .644 x .087, -908; EPR)
46	15500	1	Backup Washer (9/16 x 7/16 x .048, -013)
47	12098	1	O-ring (9/16 x 7/16 x 1/16, -013; Nitrile)
	18975	1	O-ring (9/16 x 7/16 x 1/16, -013; Viton)
	250136	1	O-ring (9/16 x 7/16 x 1/16, -013; EPR)
48	10241	1	Lockwasher

**NOTE: Tighten nut with valve in open position. Line up No. 1 on knob with arrow on decal when valve is closed (CW Rotate).**

**NOTE: Due to the complexity of this valve and the testing of it, a repair kit is not available. Any service repair must be done by Power Team Service Repair Department.**

## SPECIFICATIONS

This is a pump-mounted, pressure-compensated, adjustable flow control valve combined with a manually-operated, 4-position, detented, 3-way valve for use on hydraulic power units. This valve is intended for use with single-acting cylinders and provides the possibility of remote mounting.

### OPERATION

**Hold:** Inlet flow directed to tank, outlet port blocked.

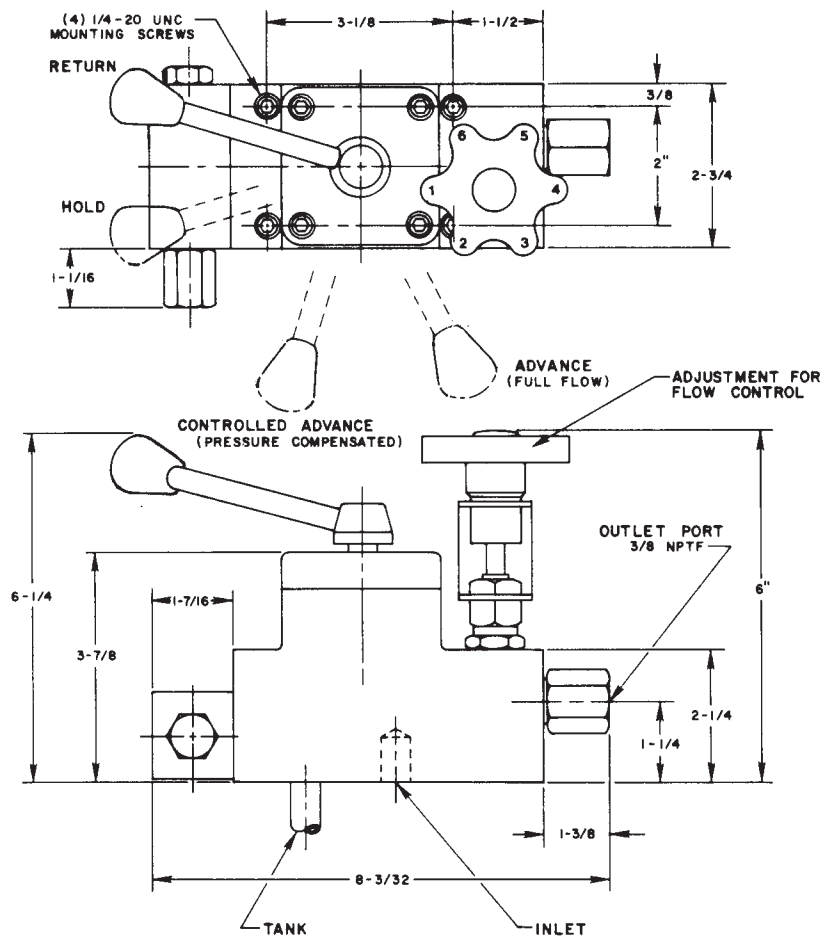
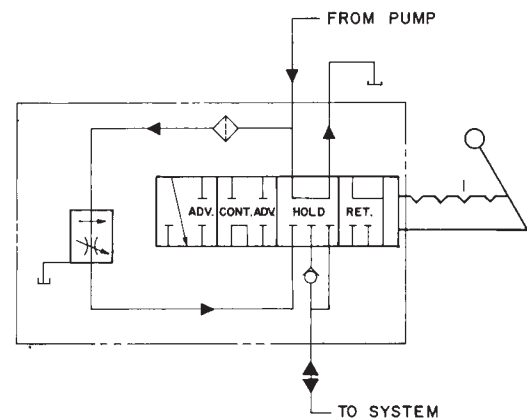
**Controlled Advance:** Inlet flow directed to outlet port. Flow is adjustable and pressure compensated.

**Advance:** Inlet flow directed to outlet port (full flow).

**Return:** Inlet flow directed to tank, outlet port flow directed back to tank.

**Note:** Valve shifts between advance, controlled advance and hold positions without loss of system pressure (Non-Interflow).

### J.I.C. SYMBOL



Refer to any operating instructions included with the product for detailed information about operation, testing, disassembly, reassembly, and preventive maintenance.

Items found in this parts list have been carefully tested and selected. **Therefore: Use only genuine Power Team replacement parts!**

Additional questions can be directed to our Technical Services Department.