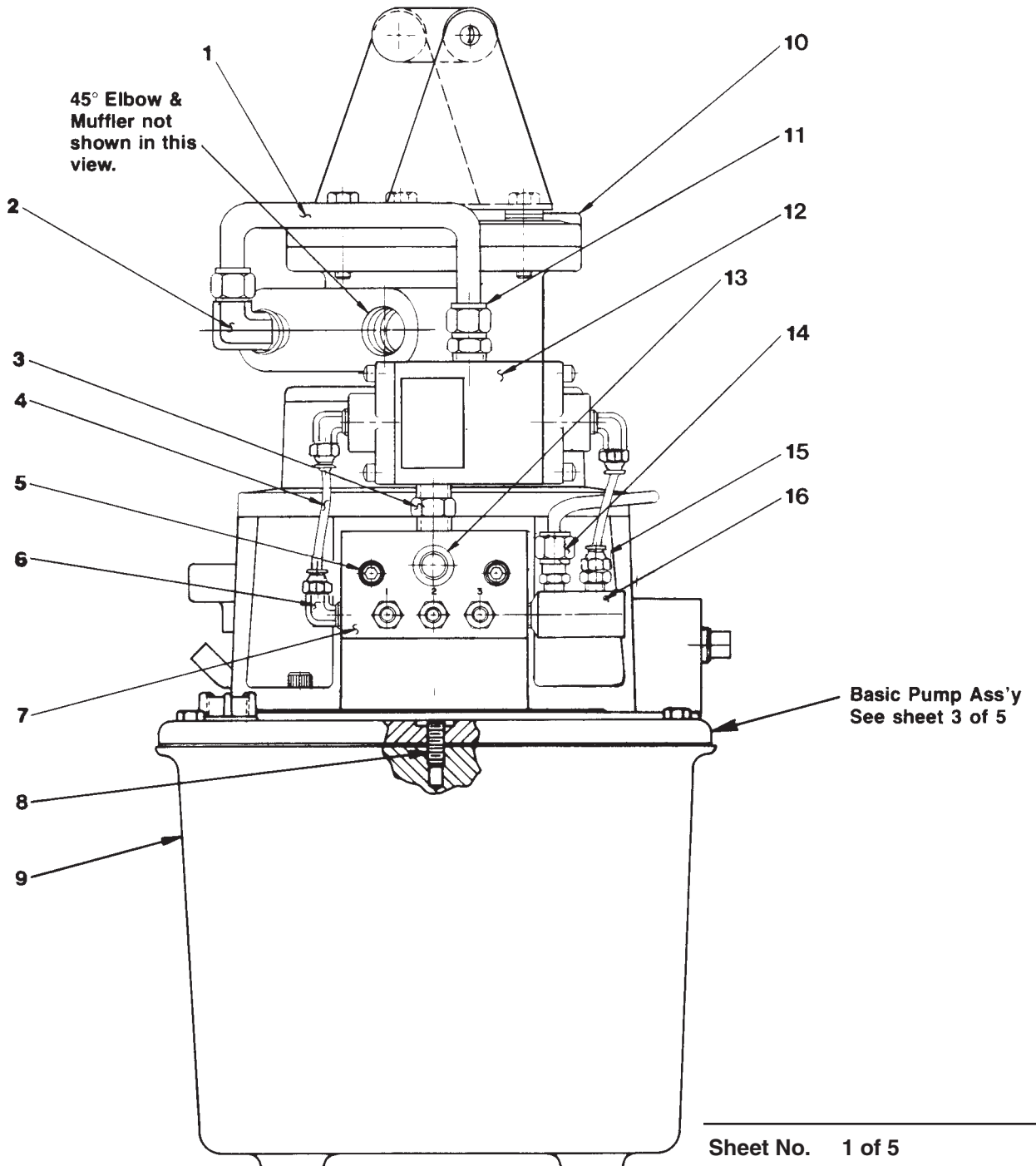


**HYDRAULIC PUMP**  
**AIR DRIVEN WITH REMOTE CONTROL**  
**GENERAL ASSEMBLY**  
**SIDE VIEW**

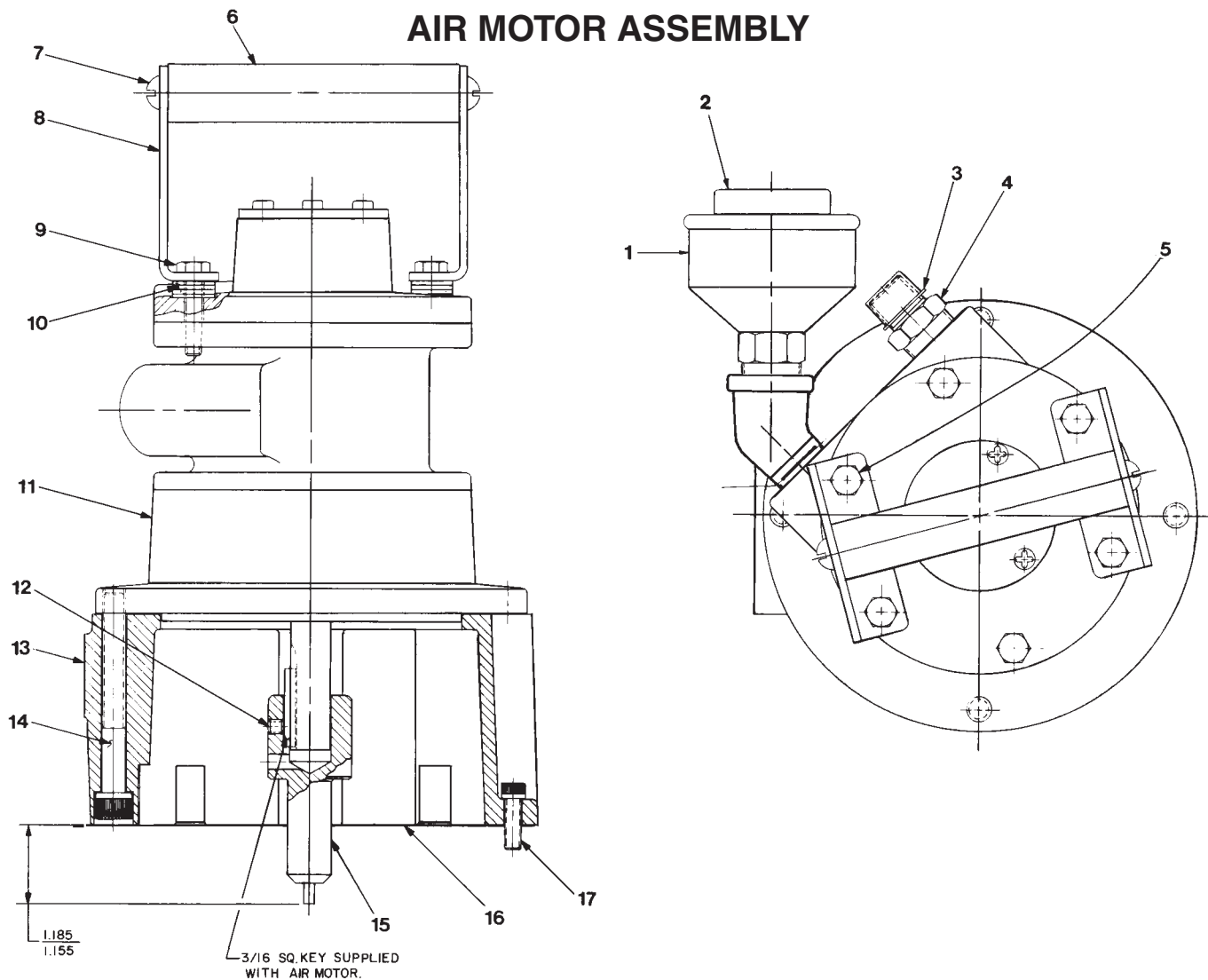


# Parts List, Form No. 100492, Back sheet 1 of 5

Item No.	Part No.	No. Req'd	Description
1	303474	1	Copper Tubing
2	17636	1	Male Elbow
3	16494	1	Hex. Nipple
4	14281	.6 ft.	Plastic Tubing
5	10020	2	Soc. Hd. Cap Screw (1/4-20 UNC x 1-1/4 Lg.)
6	250804	3	Male Connector
7	37593	1	Air Valve Manifold
8	10139	1	Set Screw

Item No.	Part No.	No. Req'd	Description
9	61165	1	Reservoir
10	51159	1	Air Motor Assembly (See below)
11	17634	1	Male Connector
12	17565	1	Air Valve
13	14794	1	Ca-Plug
14	11173	1	Straight Connector
15	250726	1	Straight Male Connector
16	200058	1	Double Elbow

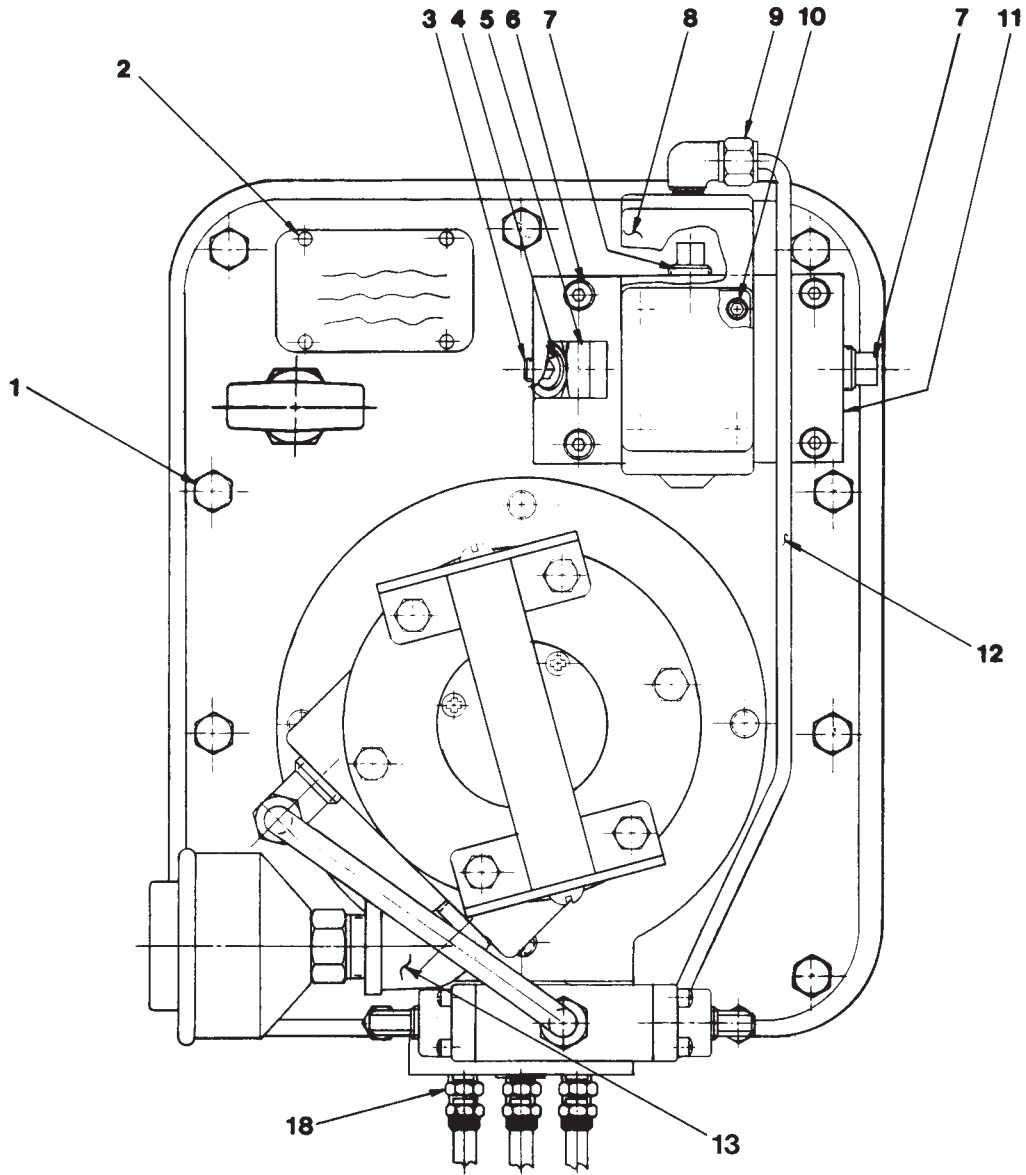
## AIR MOTOR ASSEMBLY



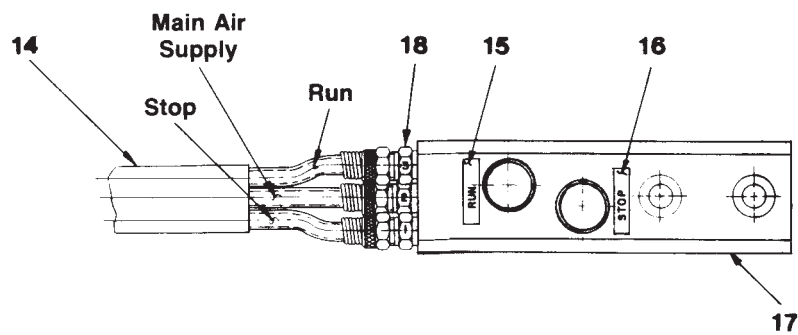
Item No.	Part No.	No. Req'd	Description
1	13966	1	Muffler
2	205505	1	Deflector
3	12546	1	Ca-Plug
4	14056	1	Reducing Nipple
5	10014	1	Hex. Hd. Cap Screw (1/4-28 UNF x 1" Lg.)
6	28158	1	Handle
7	10174	2	Rd. Hd. Machine Screw (1/4-20 UNC x 1/2 Lg.)
8	33808	2	Handle Bracket

Item No.	Part No.	No. Req'd	Description
9	10018	3	Hex. Hd. Cap Screw (1/4-28 UNF x 1-1/4 Lg.)
10	12719	16	SAE Washer (For 1/4" bolt)
11	14717	1	Air Motor (See Form #16138)
12	10556	1	Set Screw (1/4-20 UNC x 1/4 Lg.)
13	51158	1	Motor Base
14	17816	4	Soc. Hd. Cap Screw (3/8-16 UNC x 3" Lg.)
15	37842	1	Shaft Extension
16	30650	1	Gasket
17	10008	4	Soc. Hd. Cap Screw (1/4-20 UNC x 3/4 Lg.)

### GENERAL ASSEMBLY TOP VIEW

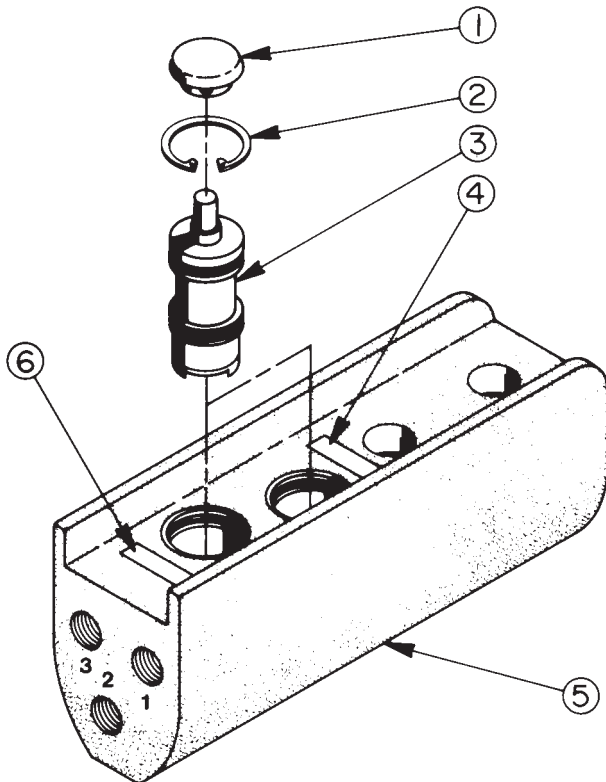


### REMOTE CONTROL



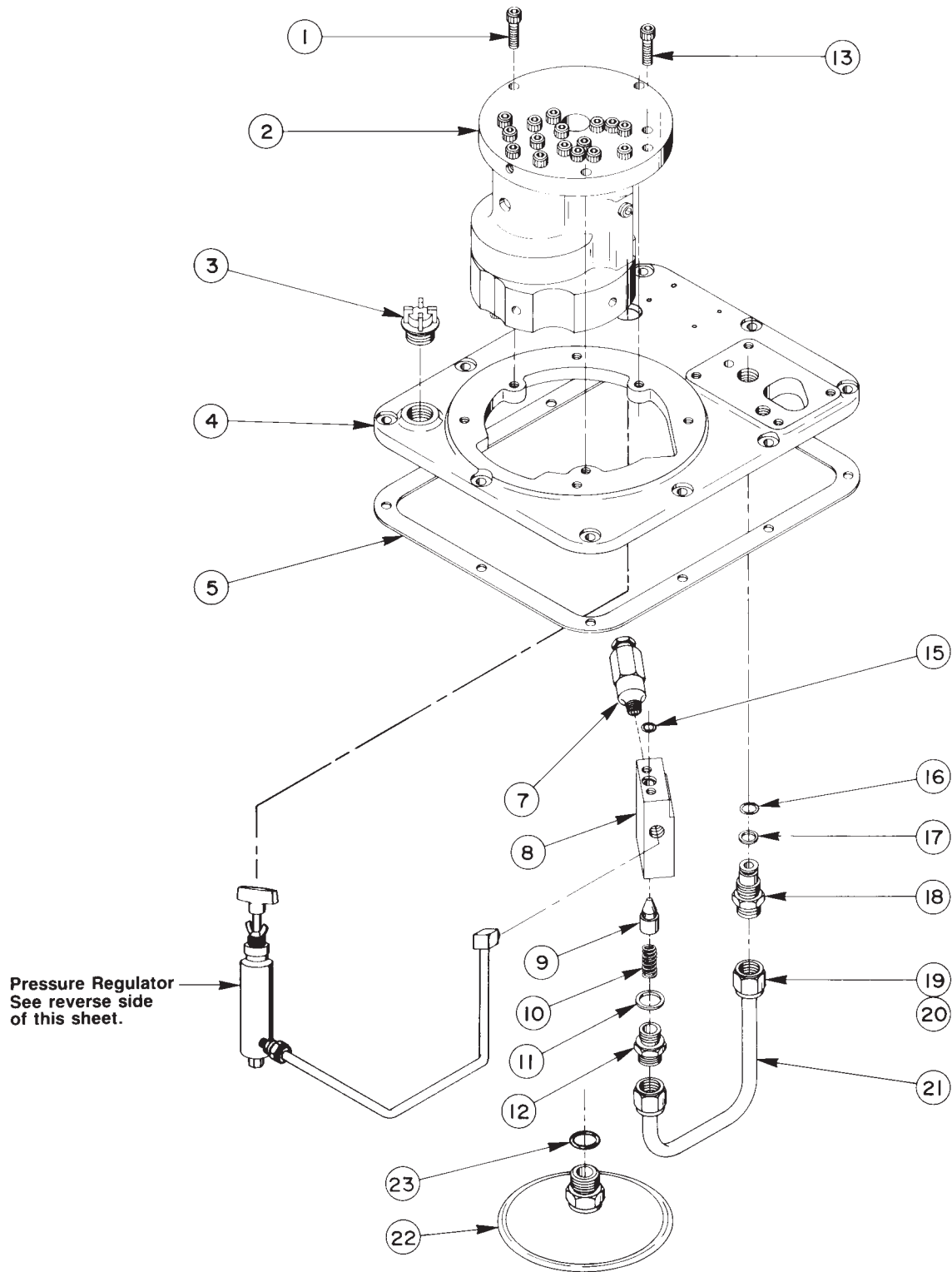
Item No.	Part No.	No. Req'd	Description
1	209799	9	Machine Screw
2	10575	4	Drive Screw
3	11084	1	Pipe Plug (1/16 NPTF)
4	10479	1	Pipe Plug (1/4 NPTF)
5	10645	1	45° Elbow
6	10890	4	Soc. Hd. Cap Screw (1/4-20 x 2" Lg.)
7	11127	2	Pipe Plug (3/8 NPTF)
8	17564	1	Directional Valve
9	11278	1	Elbow
10	14423	4	Soc. Hd. Cap Screw (#10-24 x 2" Lg.; Torque to 30/35 in. lbs.)
11	50843	1	Sub Plate
12	44987	1	Steel Tubing
13	15453	1	45° Street Elbow (1/2 NPTF)
14	45052	1	Three Strand Hose Assembly
15	203770	1	Decal (Run)
16	203769	1	Decal (Stop)
17	421265	1	Air Operated Hand Control (See below)
18	208218	6	Straight Fitting

## HAND CONTROL ASSEMBLY



Item No.	Part No.	No. Req'd	Description
1	206105	2	Push Button
2	11033	2	Retaining Ring
3	206104	2	Valve Cartridge (Including seals)
4	203769	1	Decal (Stop)
5	44024	1	Control Valve Body
6	203770	1	Decal (Run)

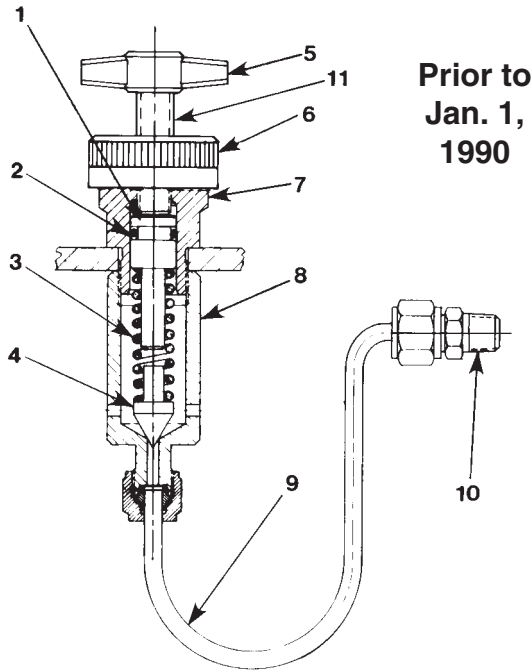
# GENERAL PUMP ASSEMBLY



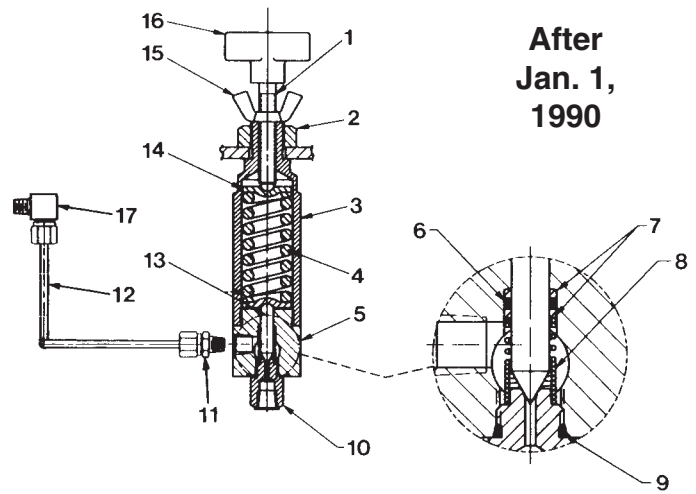
Item No.	Part No.	No. Req'd	Description
1	10016	3	Soc. Hd. Cap Screw (1/4-20 UNC x 1" Lg.)
2	58024	1	Basic Pump Assembly Replacement (Includes all items on sheet 4 of 5 and items 1, 7, 8, 9, 10, 11, 12, 13, 15, & 22 of this list)
3	20937	1	Filler Plug
4	64017	1	Cover
5	40164	1	Gasket
7	21278-50	1	Relief Valve (Set at 5,100/5,700 PSI)
8	20776	1	Valve Body
9	20771	1	Poppet
10	10425	1	Compression Spring (3/8 O.D. x 3/4 Lg.)
11	10261	1	Copper Washer (3/4 x 19/32 x 1/32)
12	20770	1	Connector (Torque to 40/45 in. lbs.)
13	10015	2	Soc. Hd. Cap Screw (1/4-28 UNF x 1" Lg.; Torque to 180 in. lbs.)
15	10266	1	O-ring (3/8 x 1/4 x 1/16)
16	10268	1	O-ring (1/2 x 3/8 x 1/16)
17	11863	1	Teflon Backup Washer (1/2 x 3/8 x 1/16)
18	20787	1	Valve Connector
19	10430	2	Tube Sleeve
20	10431	2	Tube Nut
21	21045	1	Oil Line
22	21345	1	Filter Assembly (Includes Item #23)
23	10527	1	O-ring (13/16 x .644 x .087)

### PRESSURE REGULATOR ASSEMBLIES

NOTE: Set at 4,800/5,000 PSI



Prior to  
Jan. 1,  
1990

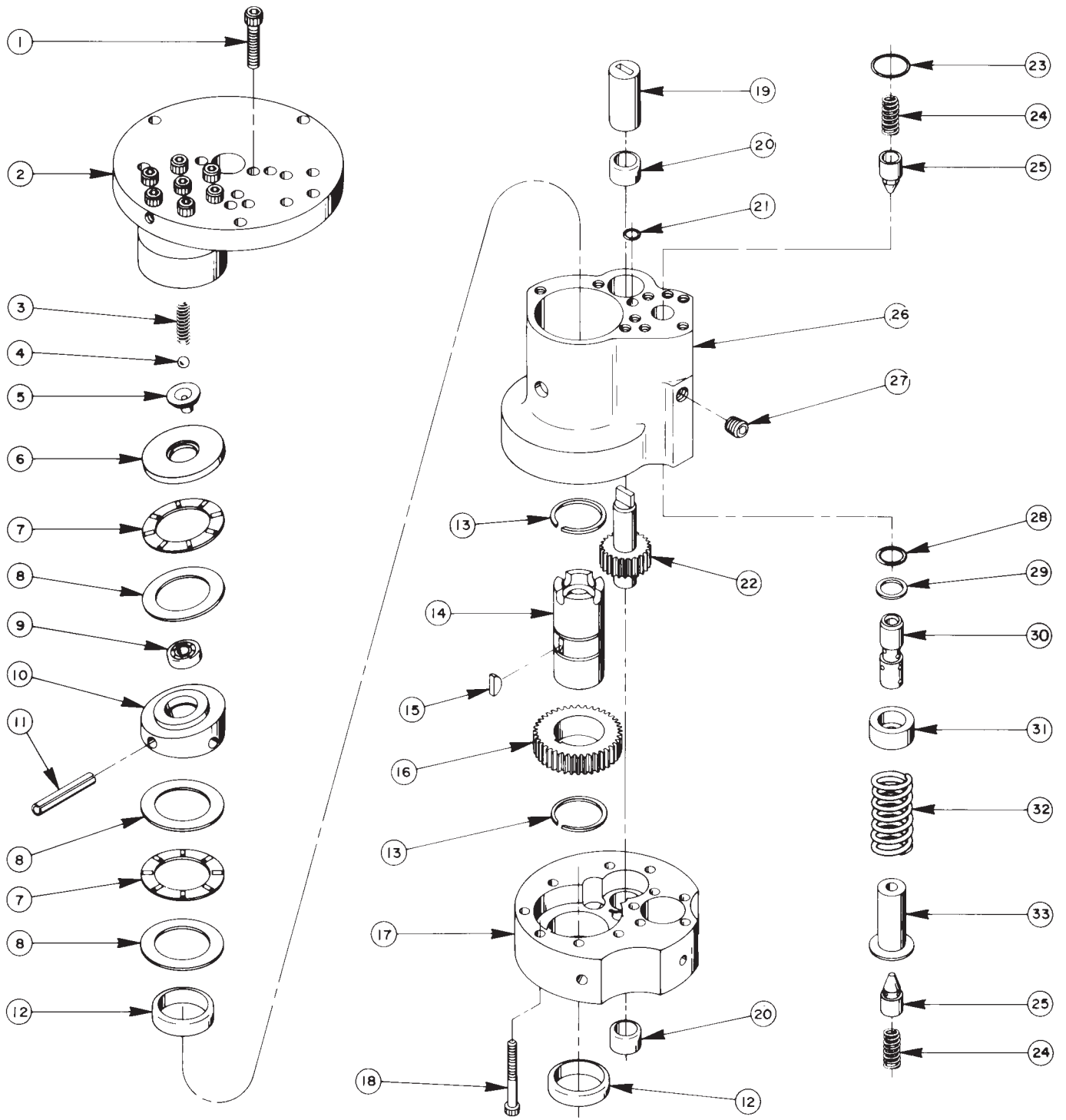


After  
Jan. 1,  
1990

Item No.	Part No.	No. Req'd	Description
1	21306	1	Spring Guide
2	10268	1	O-ring (1/2 x 3/8 x 1/16)
3	10495	1	Compression Spring (1/2 O.D. x 1-5/8 Lg.)
4	21046	1	Valve Stem
5	205789	1	Thumbscrew
6	24573	1	Knob Locknut
7	21305	1	Valve Cap
8	22361	1	Body
9	29267	1	Oil Line Assembly
10	14844	1	Connector

Item No.	Part No.	No. Req'd	Description
1	215721	1	Stem
2	10396	1	Jam Nut (3/4-16)
3	309077	1	Spring Housing
4	215429	1	Compression Spring (1.100 O.D. x 2-1/2 Lg.)
5	47648	1	Regulator Body
6	10266	1	O-ring (3/8 x 1/4 x 1/16)
7	215430	2	Backup Washer (3/8 x 9/32 x 3/64)
8	215431	1	Compression Spring
9	13755	1	O-ring (9/16 x 13/32 x 5/64)
10	309078	1	Seat Fitting
11	14844	1	Straight Fitting
12	201570	1	Oil Line Assembly
13	309079	1	Poppet
14	215428	2	Spring Retainer
15	215683	1	Wing Nut
16	215693	1	Tee Knob
17	16177	1	90° Elbow Fitting

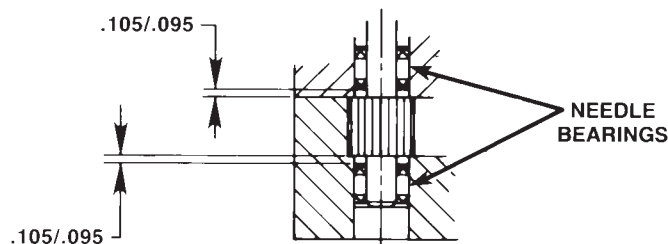
# BASIC PUMP ASSEMBLY



# Parts List, Form No. 100492, Back sheet 4 of 5

Item No.	Part No.	No. Req'd	Description
1	10020	9	Soc. Hd. Cap Screw (1/4-20 UNC x 1-1/4 Lg.; Torque to 170-180 in. lbs.)
2	33114	1	High Pressure Pump Assembly (See sheet 5 of 5)
3	10361	1	Compression Spring (1/4 O.D. x 1" Lg.)
4	10375	1	Steel Ball (1/4 dia.)
5	23547	1	Bearing Top Plate
6	23548	1	Top Plate
7	11228	2	Thrust Bearing
8	11813	3	Bearing Race
9	11814	1	Ball Bearing
10	23549	1	Angle Plate
11	11955	1	Roll Pin (1/4 dia. x 1-3/4 Lg.)
12	11064	2	Needle Bearing
13	11261	2	Retaining Ring
14	23556	1	Shaft
15	11821	1	Woodruff Key
16	23557	1	Gear
17	30533	1	Pump End Plate
18	10001	12	Soc. Hd. Cap Screw (#10-32 UNF x 1-3/4 Lg.; Torque to 50 in. lbs.)
19	21091	1	Nylon Coupling
20	11199	2	Needle Thrust Bearing (See note below)
21	10266	1	O-ring (3/8 x 1/4 x 1/16)
22	21272	1	Drive Gear
23	10303	1	O-ring (7/8 x 3/4 x 1/16)
24	10425	2	Compression Spring (3/8 O.D. x 3/4 Lg.)
25	20771	2	Poppet
26	40120	1	Pump Body
27	10427	1	Pipe Plug (1/8 NPTF)
28	10271	1	O-ring (11/16 x 1/2 x 3/32)
29	12389	1	Teflon Backup Washer (11/16 x 1/2 x 1/16)
30	20849	1	Spool
31	23255	1	Spring Guide
32	10426	1	Compression Spring (1" O.D. x 1-13/16 Lg.)
33	23546	1	Spring Guide

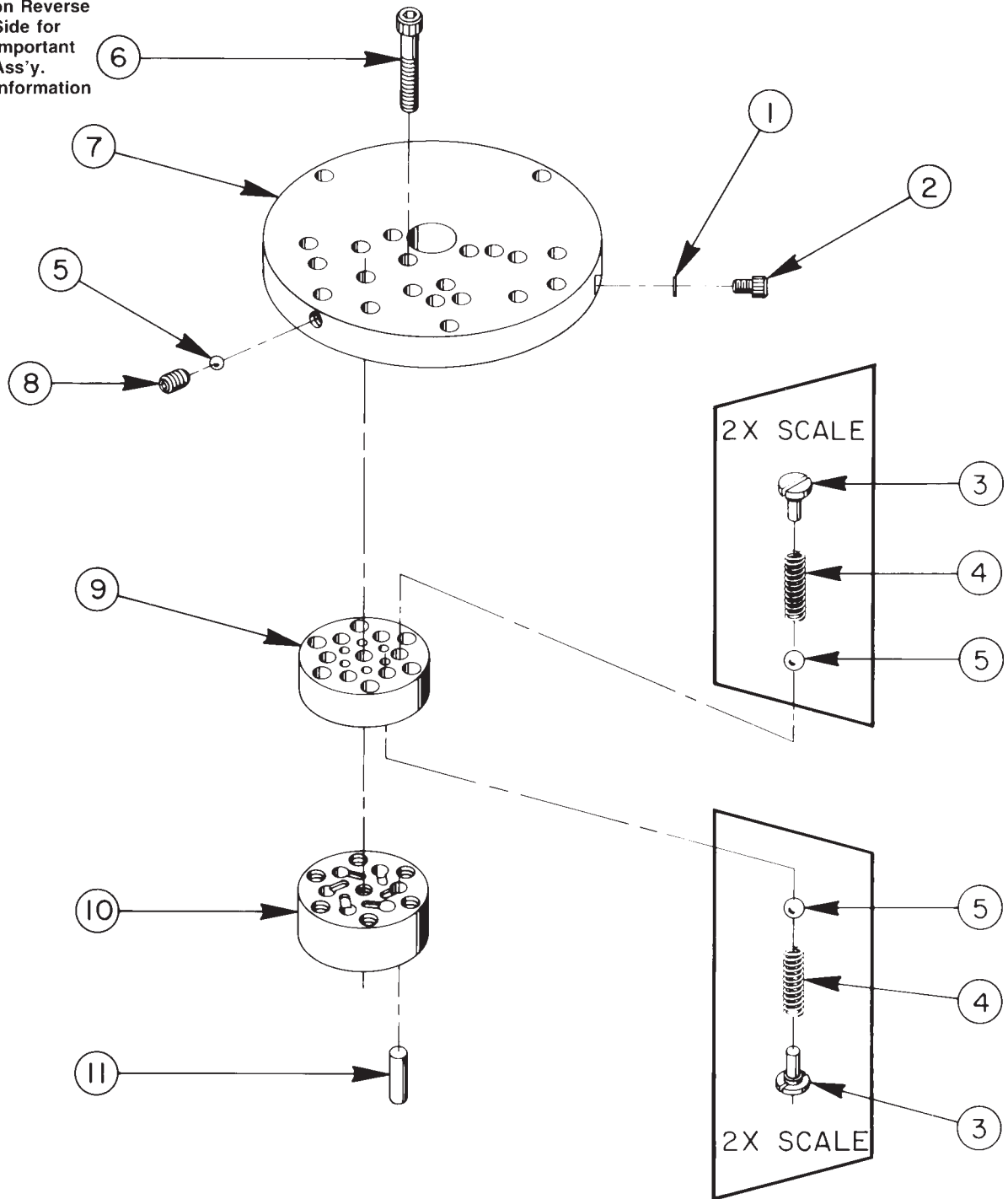
## NEEDLE BEARING INSTALLATION SPECIFICATIONS



When replacing the needle bearings on the drive gear of the basic pump, the dimensions shown must be as specified.

# HIGH PRESSURE PUMP ASSEMBLY

See Diagram  
on Reverse  
Side for  
Important  
Ass'y.  
Information

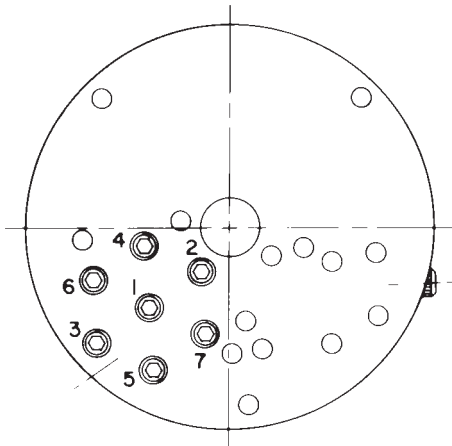


## 33114 HIGH PRESSURE PUMP ASSEMBLY (6 Pistons --- 9/32 Dia.)

Item No.	Part No.	No. Req'd	Description
1	10442	1	Copper Washer (3/8 x 1/4 x 1/32)
2	10002	1	Soc. Hd. Cap Screw (1/4-20 UNC x 3/8 Lg.; Torque to 140/160 in. lbs.)
3	*24549	12	Valve Guide
4	*10445	12	Compression Spring (5/32 O.D. x 3/4 Lg.)
5	*12223	13	Steel Ball (3/16 dia.)
6	*10023	7	Soc. Hd. Cap Screw (1/4-28 UNF x 1-1/2 Lg.; Torque to 170/180 in. lbs.)
7	*50411	1	Top Plate
8	10519	1	Soc. Set Screw (1/4-20 UNC x 3/8 Lg. Torque to 65/70 in. lbs.)
9	*41048	1	Valve Head
10	*41063	1	Pump Barrel
11	*21628	6	Piston

Consult factory when replacing items marked with an asterisk (\*).

### BOLT TIGHTENING SEQUENCE



**NOTE:** Assemble in sequence shown.  
Lubricate under head and on threads.  
Torque to 180 in. lbs.

Refer to any operating instructions included with the product for detailed information about operation, testing, disassembly, reassembly, and preventive maintenance.

Items found in this parts list have been carefully tested and selected. **Therefore: Use only genuine Power Team replacement parts!**

Additional questions can be directed to our Technical Services Department.