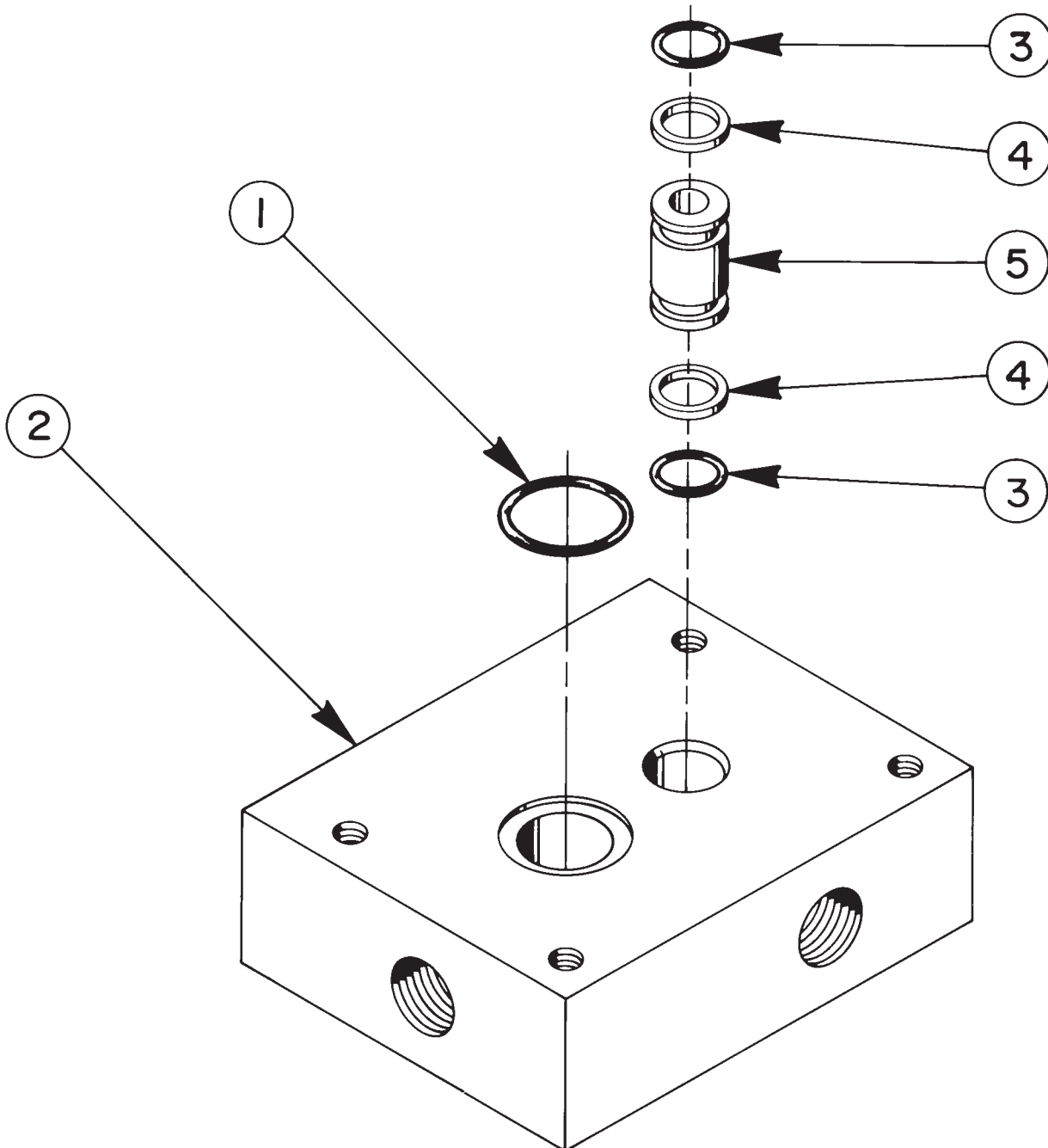


## VALVE SUBPLATE ASSEMBLY

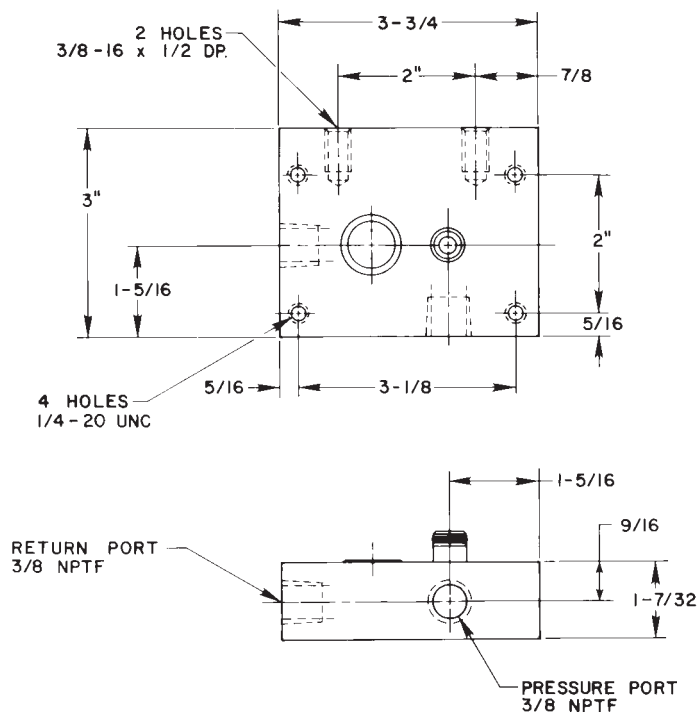
Max. Capacity: 10,000 PSI



Item No.	Part No.	No. Req'd	Description
1	10303	1	O-ring (7/8 x 3/4 x 1/16)
2	30411	1	Valve Body
3	10268	2	O-ring (1/2 x 3/8 x 1/16)
4	11863	2	Backup Ring
5	21094	1	Bushing

**PARTS INCLUDED BUT NOT SHOWN**  
 208358 1 Warning Decal

### SPECIFICATIONS



For remote mounting of 3-way and 4-way manual valves. Mounting holes are provided for surface or side mounting.

PORT SIZES: 3/8" NPTF  
 MAXIMUM PRESSURE: 10,000 PSI  
 MAX. RECOMMENDED FLOW: 5 GPM

Refer to any operating instructions included with this product for detailed information about operation, testing, disassembly, reassembly, and preventive maintenance.

Items found in this parts list have been carefully tested and selected. **Therefore: Use only genuine Power Team replacement parts!**

Additional questions can be directed to our Technical Services Department.