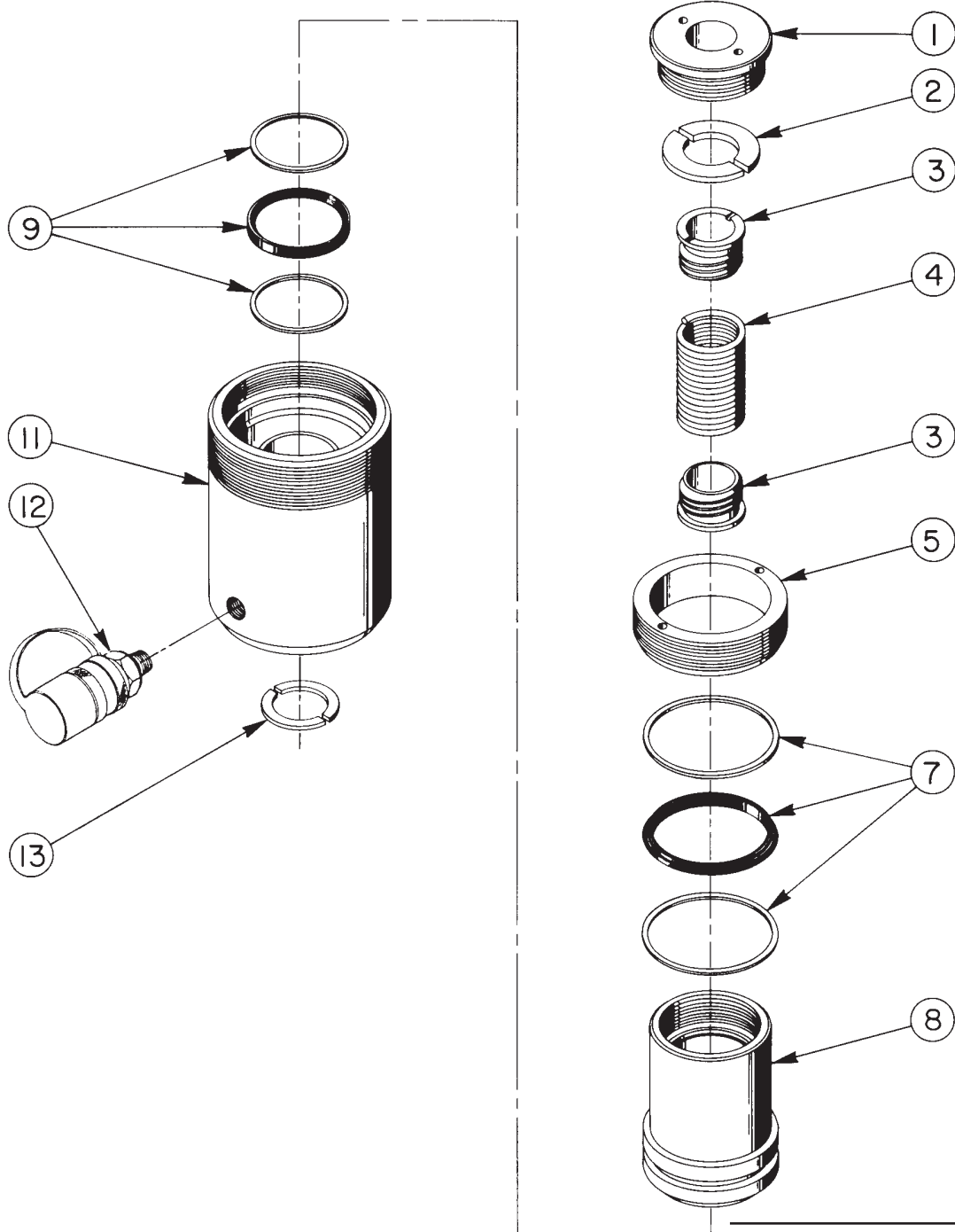


MODEL B
SINGLE-ACTING, HOLLOW CENTER, SPRING RETURN
HYDRAULIC CYLINDER
 Max. Capacity: 31.7 Tons at 10,000 PSI



Parts List, Form No. 100590, Back sheet 1 of 1

Item No.	Part No.	No. Req'd	Description
1	38905	1	Plain Insert
2	205106	2	Upper Spring Lock
3	38903	2	Spring Retainer
4	205109	1	Extension Spring
5	38906	1	Gland Nut
7	*19826	1	T-seal & Backup Rings (Smooth side of Backup Ring must be against seal.)
	†19827	1	T-seal & Backup Rings (Smooth side of Backup Ring must be against seal.)
8	51441	1	Piston Rod
9	*19824	1	T-seal & Backup Rings (Smooth side of Backup Ring must be against seal.)
	†19825	1	T-seal & Backup Rings (Smooth side of Backup Ring must be against seal.)
11	45651	1	Cylinder/Standpipe Ass'y (Unpainted; For RH302 & 6RH302S)
	420674	1	Cylinder/Standpipe Ass'y (For RH302-PFAFF)
12	9796	1	Ram Half Coupler w/Dust Cap (For RH302 & RH302-PFAFF)
	210916	1	Ram Half Coupler (For 6RH302S)
13	205105	2	Lower Spring Lock

PARTS INCLUDED BUT NOT SHOWN

†19526	1	O-ring (1" x 3/4 x 1/8; For coupler)
†205724	1	Decal (Viton)
304973	1	Trade Name Decal (For RH302)
305099	1	Trade Name Decal (For 6RH302S)
252021	1	Trade Name Decal (For RH302-PFAFF)
*203908	1	Warning Decal (For RH302)
203908-CE	1	Warning Decal (For RH302-PFAFF)
252184	1	Decal (For RH302-PFAFF)
421273	1	Thread Protector (For RH302)

Part numbers marked with an asterisk (*) are contained in Repair Kit No. 300037.
 Part numbers marked with a dagger (†) are contained in Viton Seal Kit No. 300223.

Refer to any operating instructions included with this product for detailed information about operation, testing, disassembly, reassembly, and preventive maintenance.

Items found in this parts list have been carefully tested and selected. **Therefore: Use only genuine Power Team replacement parts!**

Additional questions can be directed to our Technical Services Department.

Note: Shaded areas reflect last revision(s) made to this form.