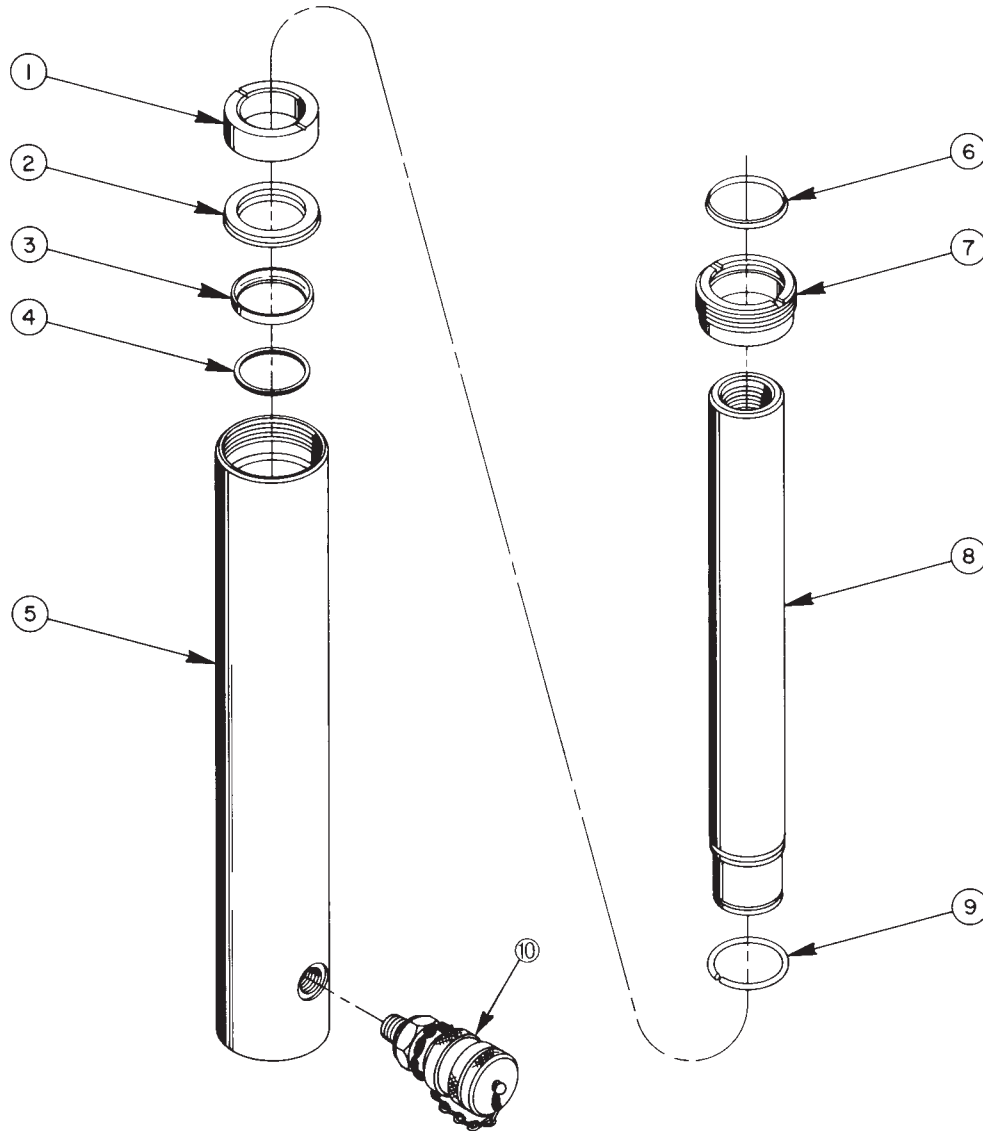


**HYDRAULIC CYLINDER**  
Max. Capacity: 7 Tons at 5,050 PSI



<b>Item No.</b>	<b>Part No.</b>	<b>No. Req'd</b>	<b>Description</b>
1	<b>305862</b>	1	Piston Head
2	<b>211675</b>	1	U-cup
3	<b>211651</b>	1	Slip Retainer
4	<b>211676</b>	1	Retaining Ring (1-3/8 shaft)
5	<b>61320</b>	1	Cylinder Body
6	<b>201429</b>	1	Rod Wiper
7	<b>305858</b>	1	Retainer Nut
8	<b>52468</b>	1	Piston Rod
9	<b>201433</b>	1	Retaining Ring
10	<b>25600</b>	1	Ram Half Coupler
	<b>47645</b>	1	Complete Coverage Decal (Not Shown)

Refer to any operating instructions included with this product for detailed information about operation, testing, disassembly, reassembly, and preventive maintenance.

Items found in this parts list have been carefully tested and selected. **Therefore: Use only genuine Power Team replacement parts!**

Additional questions can be directed to our Technical Services Department.