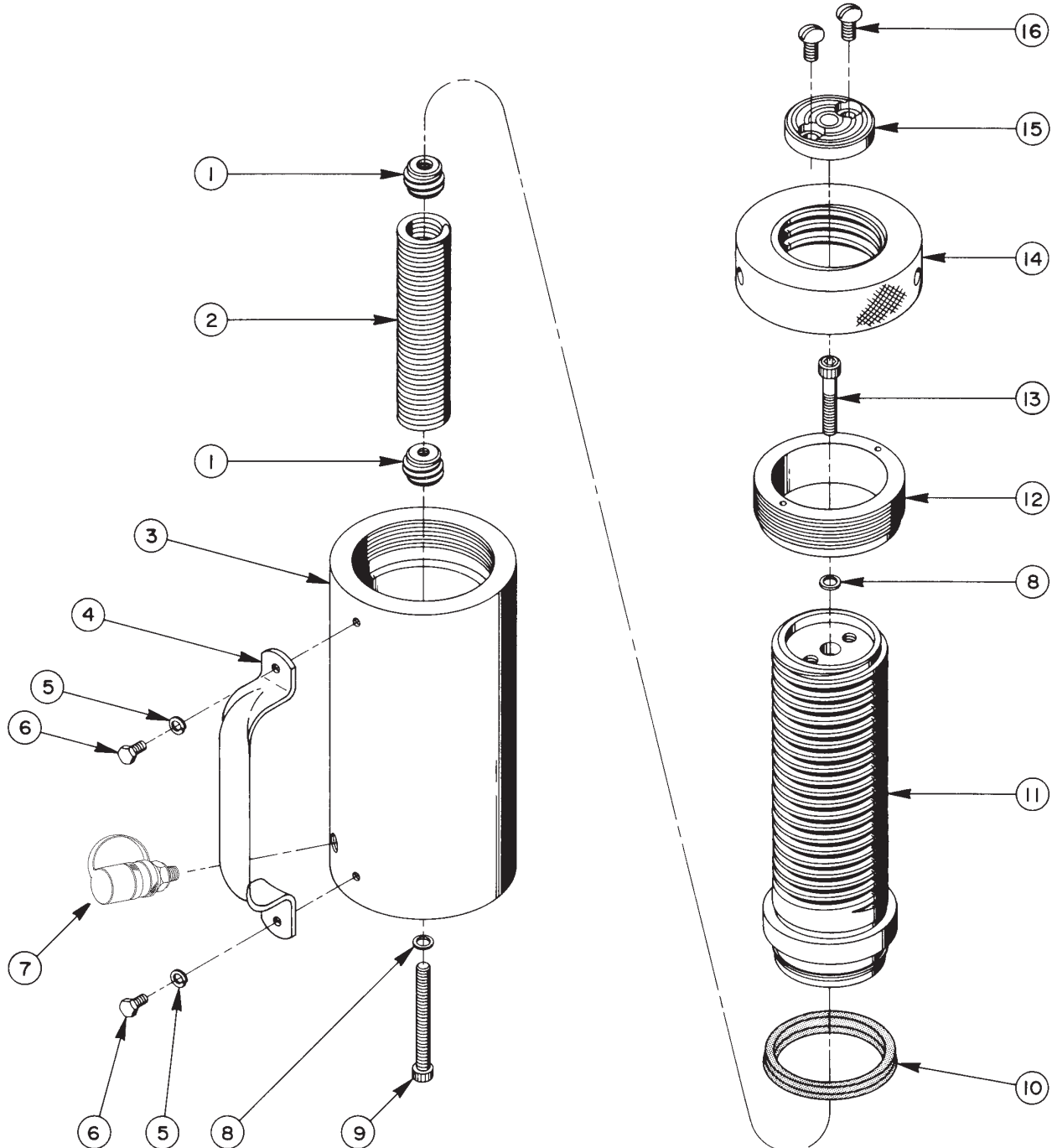


Parts List for:

**1U-7551
RA556L**

**MODEL B
SINGLE-ACTING, SPRING RETURN
HYDRAULIC CYLINDER**
Max. Capacity: 55.2 Tons at 10,000 PSI



Parts List, Form No. 100624, Back sheet 1 of 1

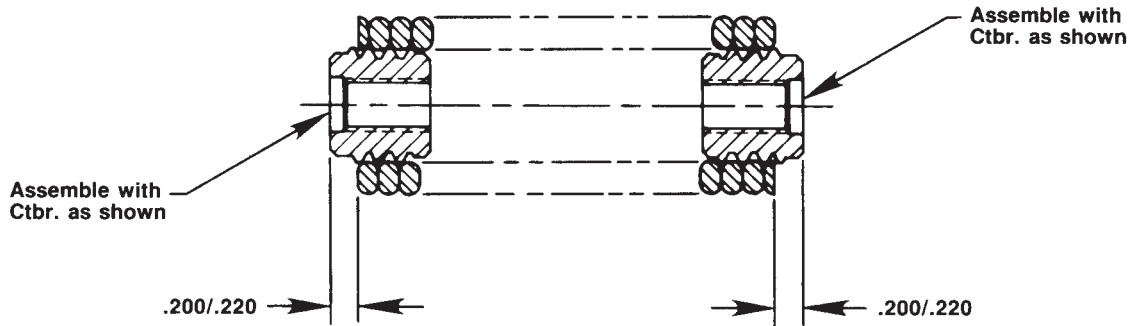
Item No.	Part No.	No. Req'd	Description
1	201417	2	Spring Retainer (See diagram below)
2	201475	1	Extension Spring (See diagram below)
3	59155	1	Cylinder Body
4	35903BK2	1	Handle
5	10244	2	Lockwasher
6	10005	2	Cap Screw (1/4-20 UNC X 1/2 Lg.)
7	9796	1	Ram Half Coupler/Dust Cap (For RA556L)
	1P-2375	1	Ram Half Coupler (For 1U-7551)
8	*12042	2	Copper Washer (9/16 X 3/8 X 1/32)
9	16110	1	Cap Screw (3/8-16 UNC X 3-1/2 Lg.; Torque to 400/425 in. lbs.)
10	*13411	1	U-cup
11	52606	1	Piston
12	45635	1	Retainer Nut (Torque to 400/425 in. lbs.)
13	11531	1	Cap Screw (3/8-16 UNC X 2" Lg.; Torque to 90/100 in. lbs.)
14	45634	1	Locking Ring
15	304952	1	Front Plate
16	16112	2	Machine Screw (3/8-16 UNC X 3/4 Lg.)

PARTS INCLUDED BUT NOT SHOWN

200056	1	Locknut Handle
13758	1	Trade Name Decal (For 1U-7551)
251137	1	Trade Name Decal (For RA556L)
*304937	1	Warning Decal
*37782	1	Caution Decal

Part numbers marked with an asterisk (*) are contained in Repair Kit No. 300395.

SPRING & RETAINER ASSEMBLY



Note: Shaded areas reflect last revision(s) made to this form.

Refer to any operating instructions included with this product for detailed information about operation, testing, disassembly, reassembly, and preventive maintenance.

Items found in this parts list have been carefully tested and selected. **Therefore: Use only genuine replacement parts!**

Additional questions can be directed to our Technical Services Department.