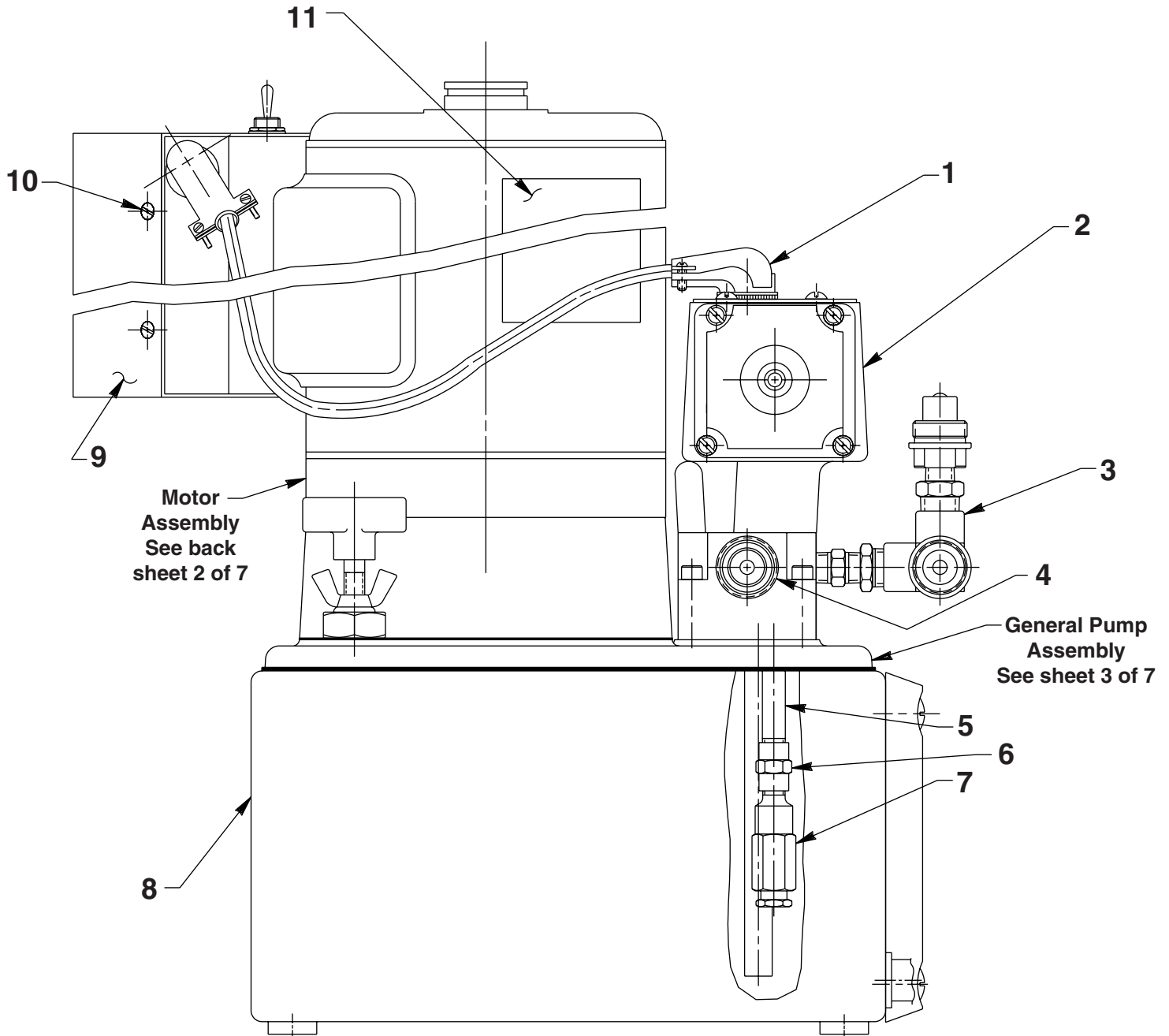


**ELECTRIC HYDRAULIC PUMP
 WITH REMOTE CONTROLLED SOLENOID VALVE**

GENERAL ASSEMBLY

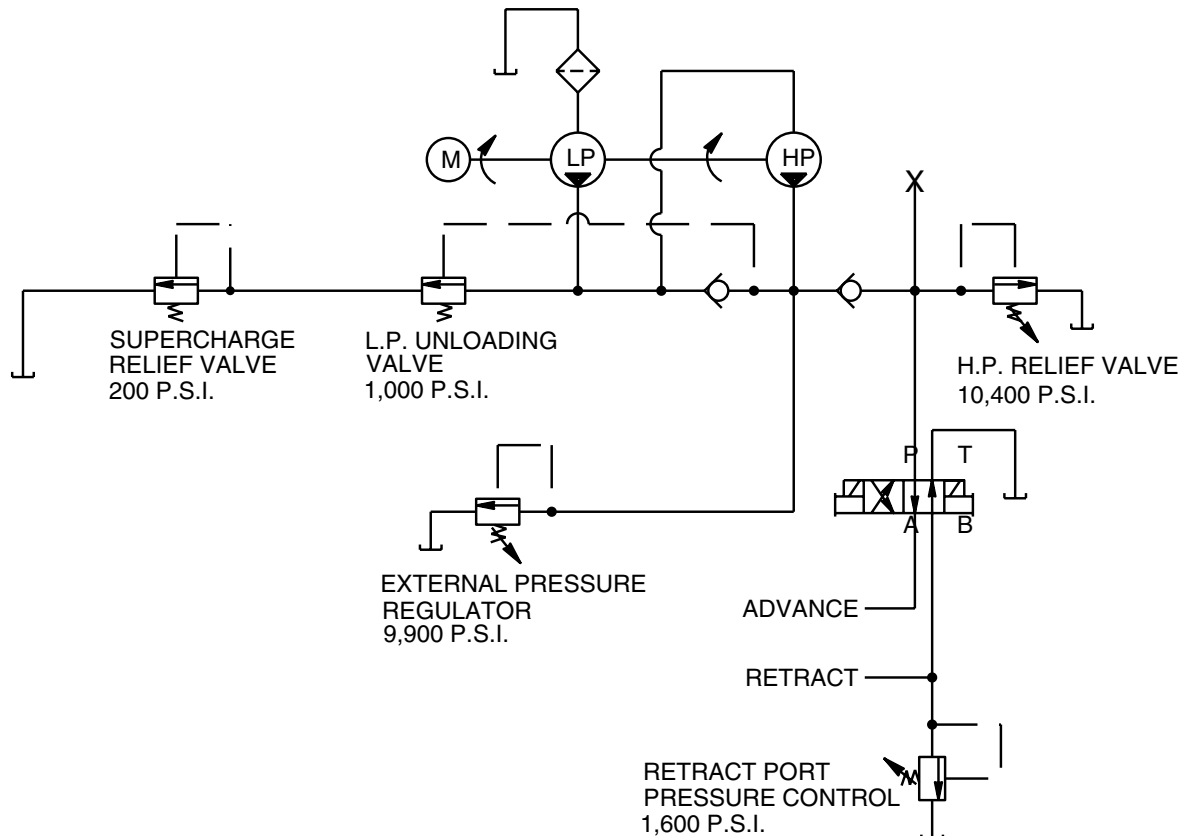


Note: Graphics updated at last revision(s) made to this form.

Sheet No. 1 of 7

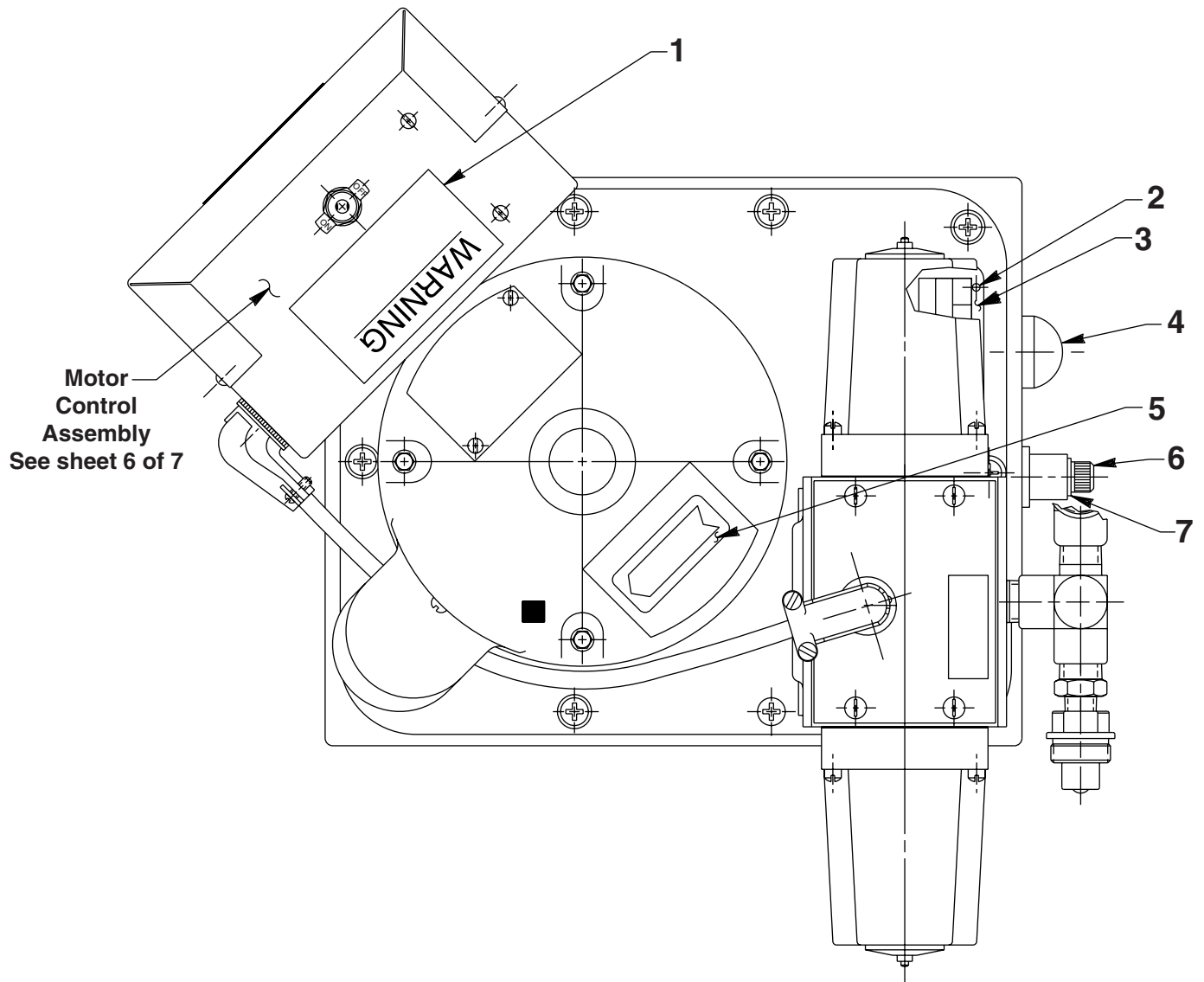
Item No.	Part No.	No. Req'd	Description
1	11144	1	90° Elbow Electrical Connector
2	61084-230	1	Solenoid Valve (2 pos., 4-way)
3	351076	1	Tee Assembly
4	251797	1	Coupler
5	15456	1	Nipple Fitting (1/8 NPTF)
6	18841	1	Straight Fitting (1/8 NPTF)
7	21278-15	1	Relief Valve (Set at 1,500/1,700 PSI)
8	64364CO3	1	Reservoir
9	43126WH2	1	Cover
10	14812	4	Screw (#8-18 X 3/8 Lg.)
11	200188	1	Warning Decal

HYDRAULIC SCHEMATIC



Note: Graphics updated at last revision(s) made to this form.

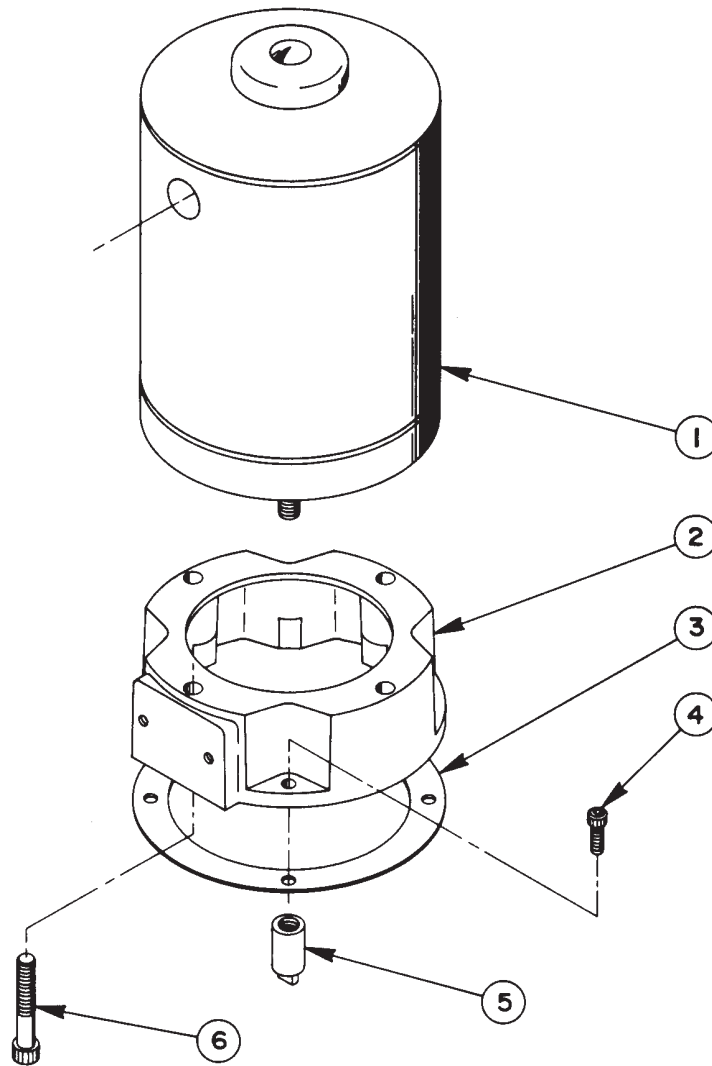
GENERAL ASSEMBLY - TOP VIEW



Item No.	Part No.	No. Req'd	Description
1	250447	1	Warning Decal
2	10575	4	Drive Screw
3	212318	1	Name Plate
4	350431	1	Oil Level Gauge w/Thermometer
5	27556	1	Rotation Decal
6	10412	1	Socket HD Screw (3/8-16 x 1/2)
7	19779	1	Seal Washer (.73 x .42)

Note: Graphics updated at last revision(s) made to this form.

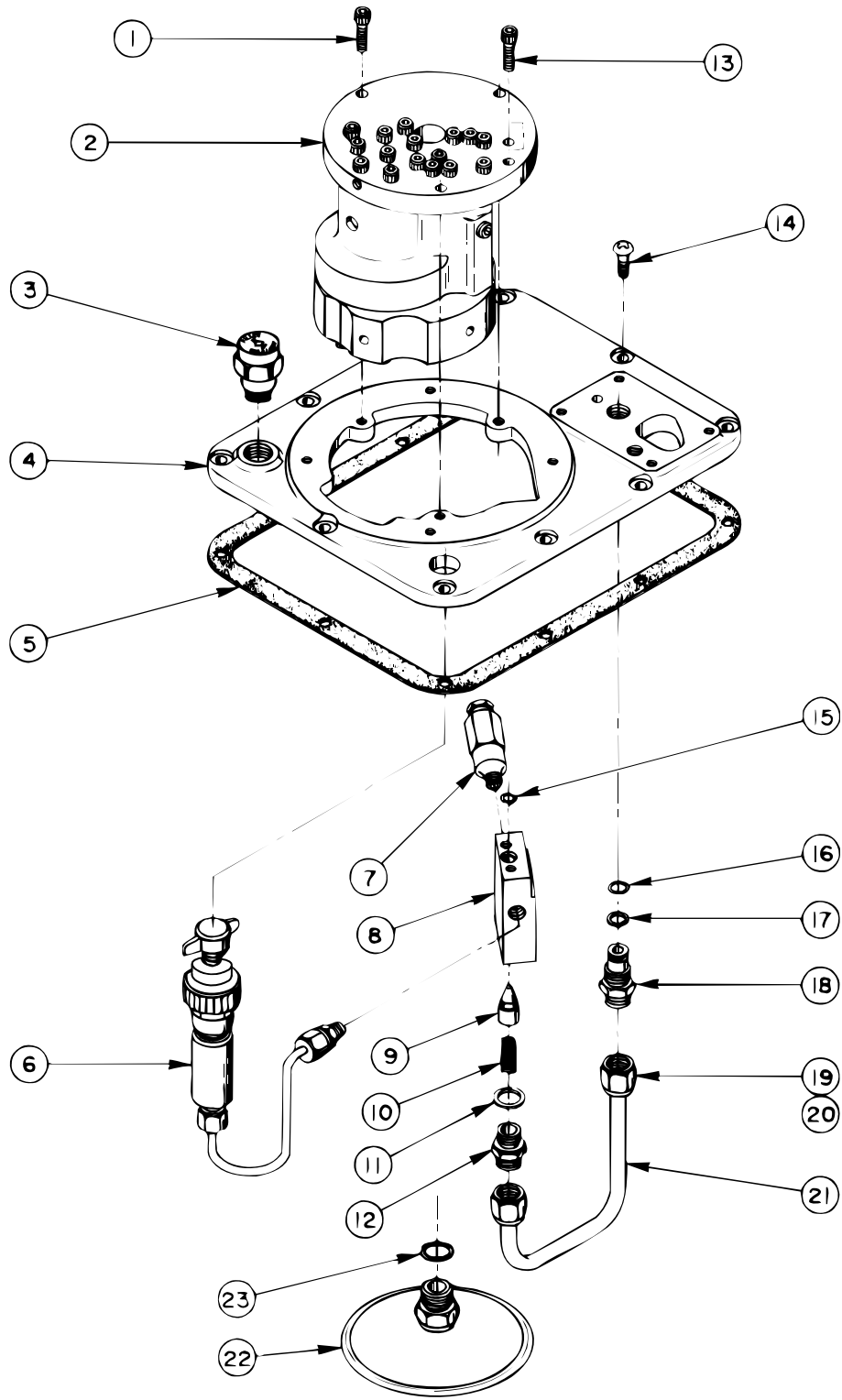
ELECTRIC MOTOR ASSEMBLY



Item No.	Part No.	No. Req'd	Description
1	10865WH2	1	Electric Motor
2	40118WH2	1	Motor Base
3	30650	1	Gasket
4	10008	4	Cap Screw (1/4-20 UNC X 3/4 Lg.)
5	21274	1	Adapter
6	12866	4	Cap Screw (3/8-16 UNC X 2-1/4 Lg.)

Note: Shaded areas reflect last revision(s) made to this form.

GENERAL PUMP ASSEMBLY



Note: Graphics updated at last revision(s) made to this form.

Parts List, Form No. 100630, Back sheet 3 of 7

Item No.	Part No.	No. Req'd	Description
1	10016	3	Soc. Hd. Cap Screw (1/4-20 UNC X 1" Lg.)
2	*27206	1	Basic Pump Ass'y Replacement (See chart below)
3	20937	1	Filler Plug
4	40064WH2	1	Cover
5	40164	1	Gasket
6	-	1	Pressure Regulator Ass'y (See below)
7	21278	1	Relief Valve (Set at 10,100/10,700 PSI)
8	20776	1	Valve Body
9	20771	1	Poppet
10	10425	1	Compression Spring (3/8 O.D. X 3/4 Lg.)

Item No.	Part No.	No. Req'd	Description
11	10261	1	Copper Washer (3/4 X 19/32 X 1/32)
12	20770	1	Connector (Torque to 40/45 ft. lbs. oiled)
13	10015	2	Soc. Hd. Cap Screw (1/4-28 UNF X 1" Lg.; Torque to 130/180 in. lbs.)
14	10177	10	Mach. Screw (1/4-20 UNC X 3/4 Lg.)
15	10266	1	O-ring (3/8 X 1/4 X 1/16)
16	10268	1	O-ring (1/2 X 3/8 X 1/16)
17	11863	1	Teflon Backup Washer
18	20787	1	Valve Connector
19	10430	2	Tube Sleeve
20	10431	2	Tube Nut
21	21045	1	Oil Line
22	21345	1	Filter Ass'y (Includes Item #23)
23	10527	1	O-ring (13/16 X .644 X .087)

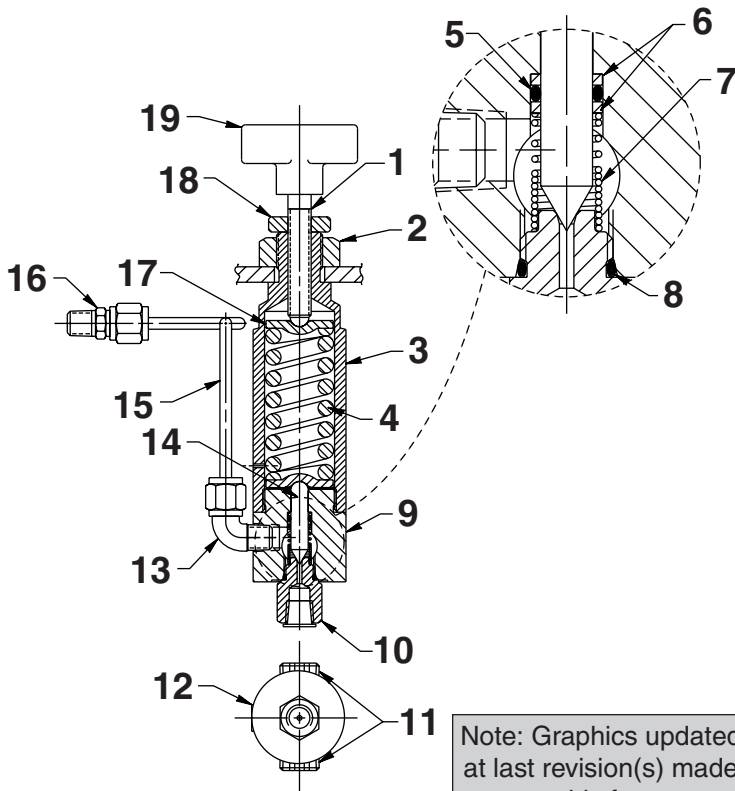
MAX. PSI	BASIC PUMP ASS'Y	BASIC PUMP ASS'Y REPLACEMENT	HIGH PRESS. PUMP ASS'Y	NO. OF PISTONS
10,000	50404	*27206	33113	3

LOW SPEED (3,450 RPM)

*Includes all items on sheet 4 of 6 and items, 1, 7, 8, 9, 10, 11, 12, 13, 15 & 22 on this sheet.

PRESSURE REGULATOR ASSEMBLY

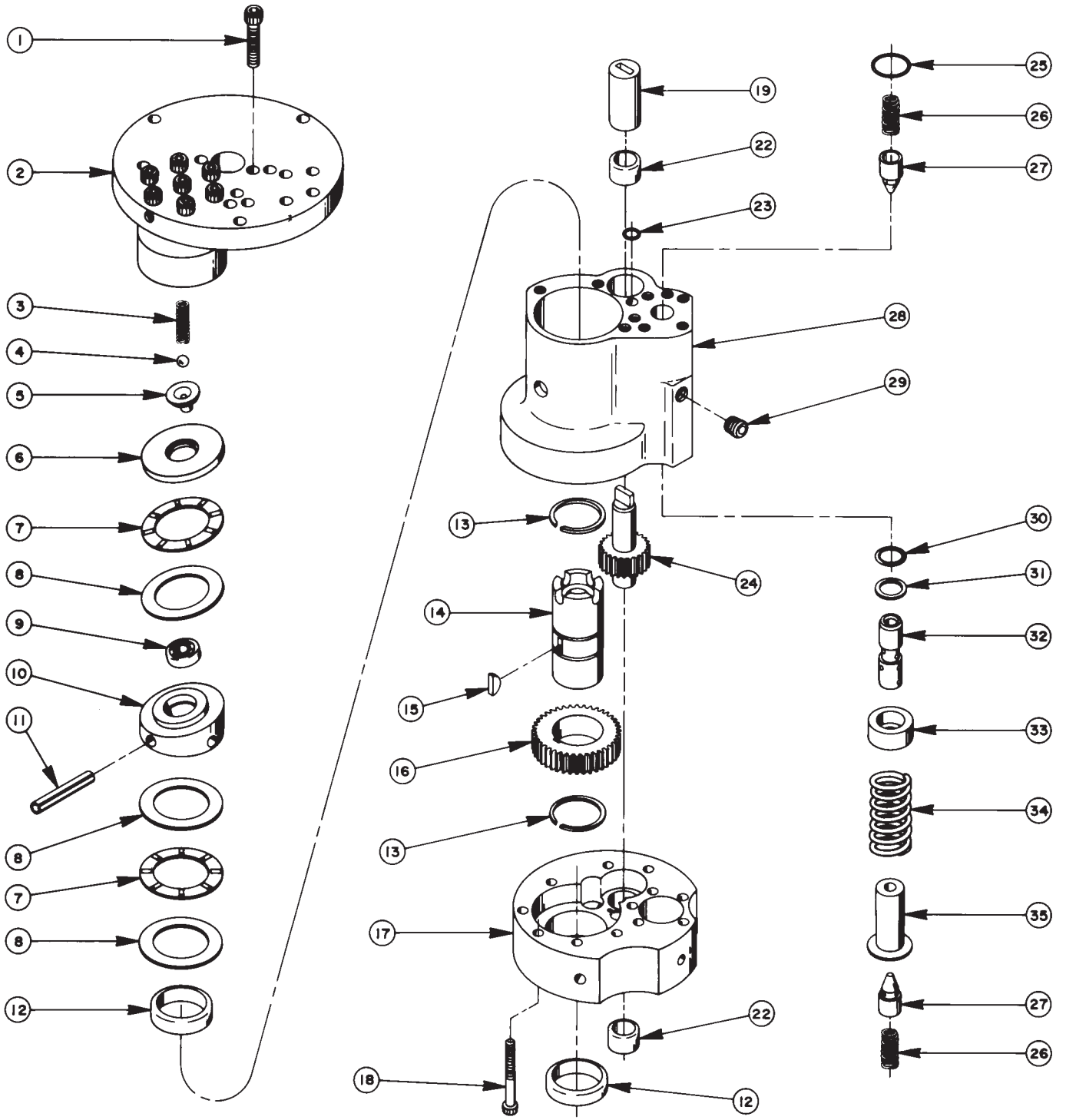
NOTE: Set at 9,800/10,000 PSI



Note: Graphics updated at last revision(s) made to this form.

Item No.	Part No.	No. Req'd	Description
1	215721	1	Stem, Adjustment (Assemble to Item #19 with Loctite #242 or equiv.)
2	10396	1	Nut, Hex Jam (3/4-16)
3	309077	1	Housing, Regulator
4	215429	1	Stem (1.1 OD x 2.5 x 0.25 WS)
5	10266	1	O-ring (.37 x .25 Nitrile)
6	215430	2	Washer, Backup (.39 x .28)
7	215431	1	Spring (.39 OD x .66 x .28 WS)
8	13755	1	O-ring (.55 x .41 Nitrile)
9	47648	1	Body, Regulator
10	309078	1	Fitting, Seat (1/8" NPTF)
11	10909	2	Fitting, Plug (3/8 NPTF)
12	10427	1	Fitting, Plug (1/8 NPTF)
13	16177	1	Fitting, Elbow (90° 1/8 NPTF)
14	309079	1	Poppet
15	201570	1	Tube, Pressure Regulator
16	14844	1	Fitting, Straight (1/8 NPTF)
17	215428	2	Spring, Retainer
18	215683	1	Nut, Regulator Locking (3/8-24)
19	215693	1	Knob

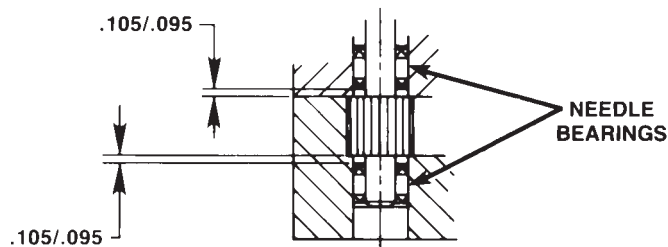
BASIC PUMP ASSEMBLY



Parts List, Form No. 100630, Back sheet 4 of 7

Item No.	Part No.	No. Req'd	Description
1	10020	9	Soc. Hd. Cap Screw (1/4-20 UNC x 1-1/4 Lg.; Torque to 170-180 in. lbs.)
2	33113	1	High Pressure Pump Ass'y (See sheet 5 of 7)
3	10361	1	Compression Spring (1/4 O.D. X 1" Lg.)
4	10375	1	Steel Ball
5	23547	1	Bearing Top Plate
6	23548	1	Top Plate
7	11228	2	Thrust Bearing
8	11813	3	Bearing Race
9	11814	1	Ball Bearing
10	23549	1	Angle Plate
11	11955	1	Roll Pin
12	11064	2	Needle Bearing
13	11261	2	Retaining Ring
14	23556	1	Shaft
15	11821	1	Woodruff Key
16	23557	1	Gear
17	30533	1	Pump End Plate
18	10001	13	Soc. Hd. Cap Screw (#10-32 UNF X 1-3/4 Lg.; Torque to 50/60 in. lbs.)
19	21091	1	Aluminum Coupling
22	11199	2	Needle Thrust Bearing (See note below)
23	10266	1	O-ring (3/8 X 1/4 X 1/16)
24	21272	1	Drive Gear
25	10303	1	O-ring (7/8 X 3/4 X 1/16)
26	10425	2	Compression spring (3/8 O.D. X 3/4 Lg.)
27	20771	2	Poppet
28	40120	1	Pump Body
29	10427	1	Pipe Plug (1/8 NPTF)
30	10271	1	O-ring (11/16 X 1/2 X 3/32)
31	12389	1	Teflon Backup Washer
32	20849	1	Spool
33	23255	1	Spring Guide
34	10426	1	Compression spring (1" O.D. X 1-13/16 Lg.)
35	23256	1	Spring Guide

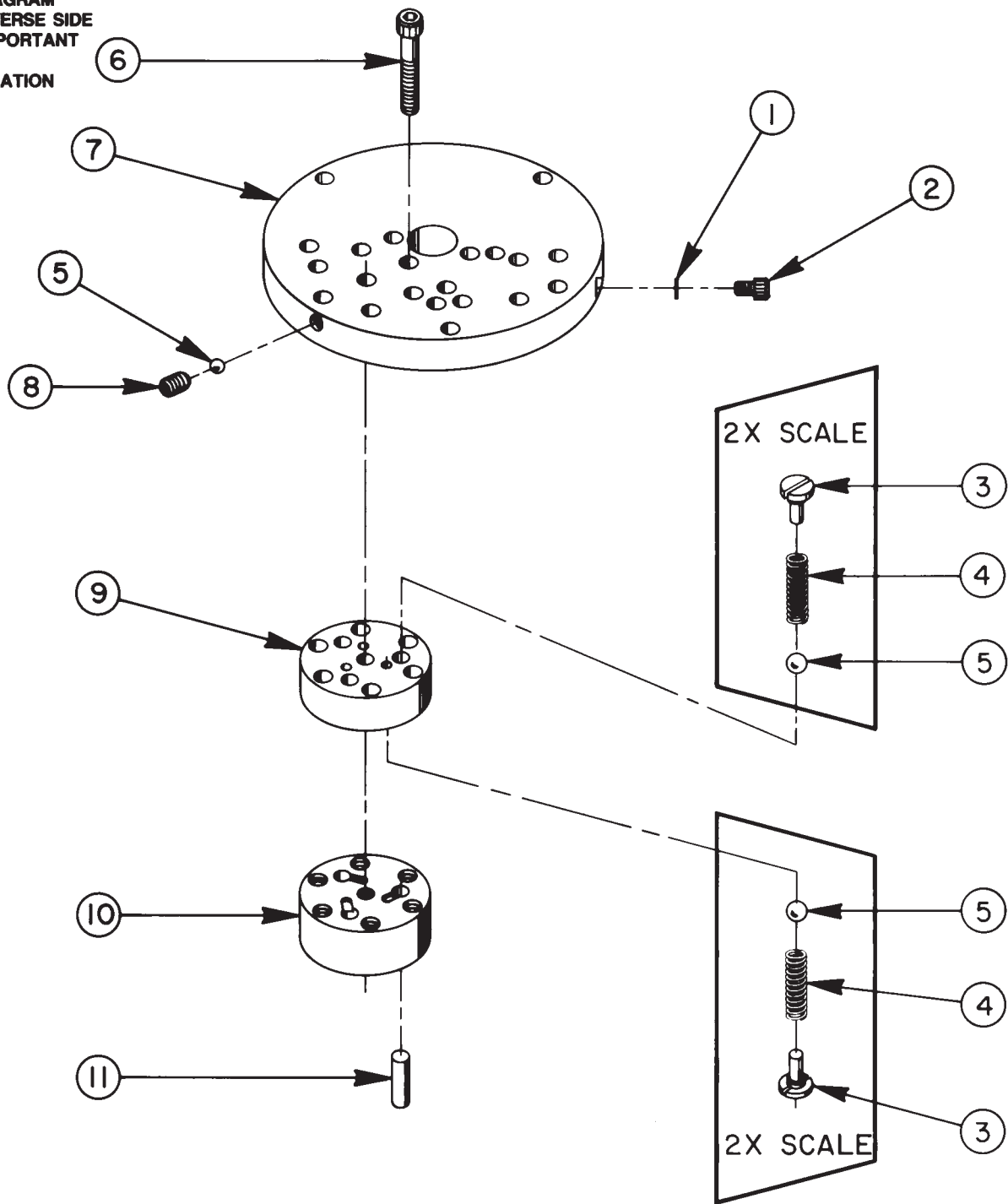
NEEDLE BEARING INSTALLATION SPECIFICATIONS



When replacing the needle bearings on the drive gear of the basic pump, the dimensions shown must be as specified.

HIGH PRESSURE PUMP ASSEMBLY

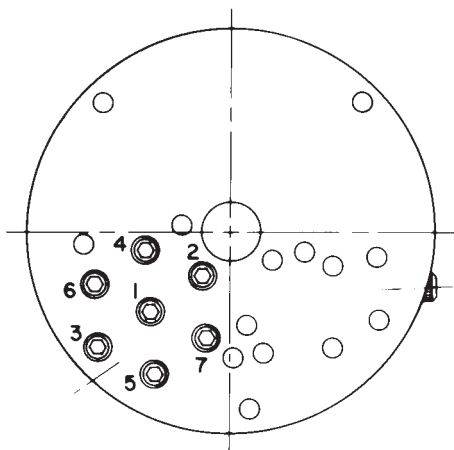
SEE DIAGRAM
ON REVERSE SIDE
FOR IMPORTANT
ASS'Y.
INFORMATION



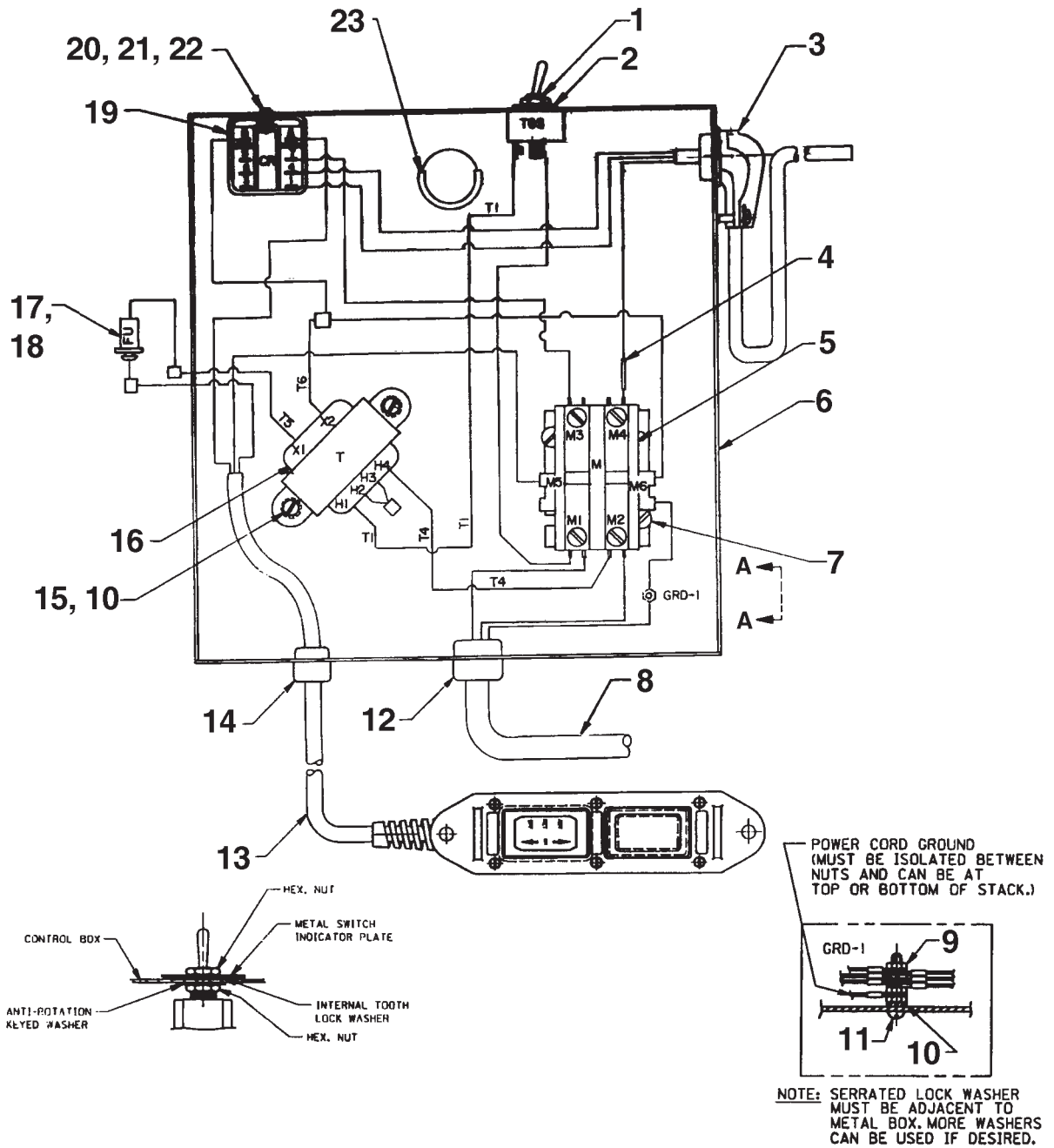
33113 PUMP ASS'Y
(3 Pistons - 9/32 Dia.)

Item No.	Part No.	No. Req'd	Description
1	10442	1	Copper Washer (3/8 X 1/4 X 1/32)
2	10002	1	Soc. Hd. Cap Screw (1/4-20 UNC X 3/8 Lg.; Torque to 140/160 in. lbs.)
3	24549	6	Valve Guide
4	10445	6	Compression Spring (5/32 O.D. X 3/4 Lg.)
5	12223	7	Steel Ball
6	10023	7	Soc. Hd. Cap Screw (1/4-28 UNF X 1-1/2 Lg.; Torque to 170/180 in. lbs.; See note below)
7	50411	1	Top Plate
8	10519	1	Soc. Set Screw (1/4-20 UNC X 3/8 Lg.; Torque to 65/70 in. lbs.)
9	40630	1	Valve Head
10	41062	1	Pump Barrel
11	21628	3	Piston

BOLT TIGHTENING SEQUENCE



**NOTE: Assemble in sequence shown.
 Lubricate under head and on threads.
 Torque to 180 in. lbs.**



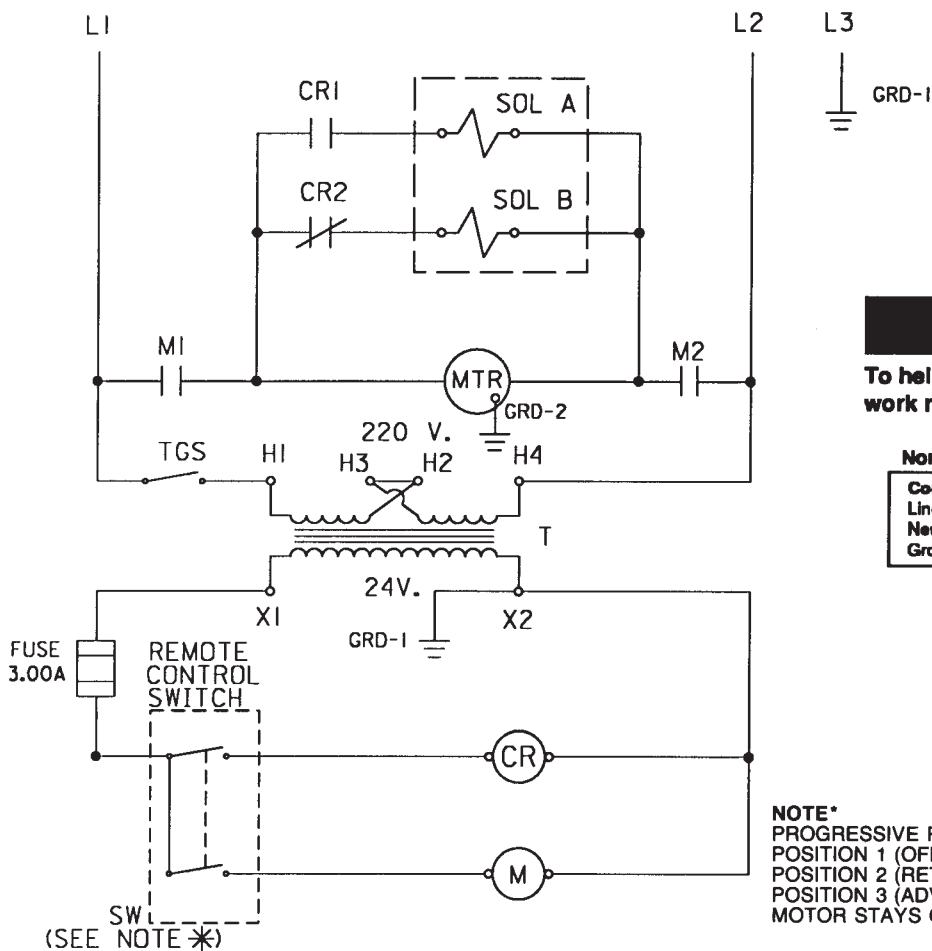
MOTOR CONTROL ASSEMBLY

Note: Graphics updated at last revision(s) made to this form.

Item No.	Part No.	No. Req'd	Description
1	12301	1	Switch
2	13890	1	Indicator Plate
3	11144	1	90° Elbow Connector
4	16782	.18 ft.	Heat Shrink Tubing
5	420718-4	1	Contactors
6	51218WH2	1	Electrical Box Cover
7	10166	2	Round HD Screw (10-24 x 1/2)
8	307439	8 ft.	Cable (12/3 SJTO)
9	10197	2	Hex Nut (#10-24)
10	11108	3	Lockwasher (#10 External Tooth)
11	11856	1	Screw (#10-24 x 1" Lg.)
12	210112	1	Strain Relief Bushing
13	250023	1	Hand Control (See sheet 7 of 7)
14	15993	1	Strain Relief Bushing
15	11539	6	Sl. Rd. Hd. Machine Screw (#10-24 x 1/4 Lg.)
16	11852	1	Transformer
17	206962	1	Fuse (3 AMP)
18	16887	1	Fuse Holder
19	39092	1	Relay
20	10159	2	Sl. Rd. Hd. Machine Screw (#6-32 x 5/16 Lg.)
21	15906	2	Washer (#6 Shakeproof)
22	10195	2	Machine Screw Nut (#6-32)
23	15497	1	Rubber Grommet

ELECTRICAL SCHEMATIC

220 V., 50 Hz.; SINGLE PHASE



WARNING

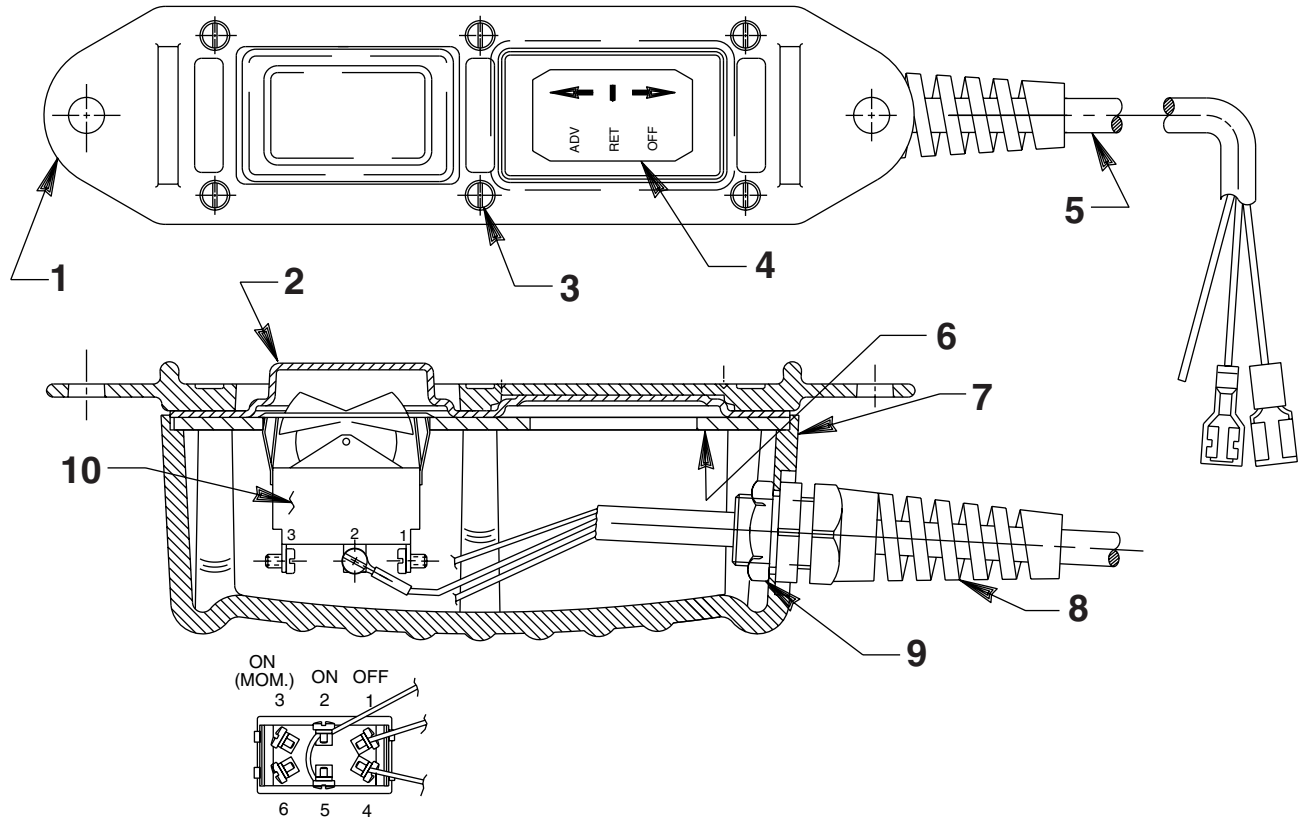
To help avoid personal injury, all electrical work must be done by a qualified electrician.

North American & International Color Codes

Conductors	North American	International
Line	Black	Brown
Neutral	White	Blue
Ground	Green	Green/Yellow

NOTE*
 PROGRESSIVE REMOTE CONTROL SWITCH.
 POSITION 1 (OFF): MOTOR OFF, SOLENOID OFF.
 POSITION 2 (RET.): MOTOR ON, SOLENOID "B" ON.
 POSITION 3 (ADV.): MOTOR ON, SOLENOID "A" ON. (MOMENTARY)
 MOTOR STAYS ON BETWEEN POSITION 2 AND 3.

REMOTE CONTROL HAND SWITCH ASSEMBLY



Item No.	Part No.	No. Req'd	Description
1	420050-1	1	Cover, Plastic
2	420050-2	1	Gasket, Remote Hand Switch
3	250248	6	Screw, Pan Head (4-24 x 3/4)
4	203086	1	Decal, Label Controls
5	12908	21 ft.	Cable (18/3 SJTO)
6	420050-3	1	Plate, Switch Mounting
7	420050-4	1	Housing, Switch
8	251818	1	Bushing, Strain Relief
9	251802	1	Nuts, Hex Lock (PG11 Thread; torque to 30/35 in. lbs.)
10	420017	1	Switch, Rocker

Note: This page added at last revision(s) made to this form.