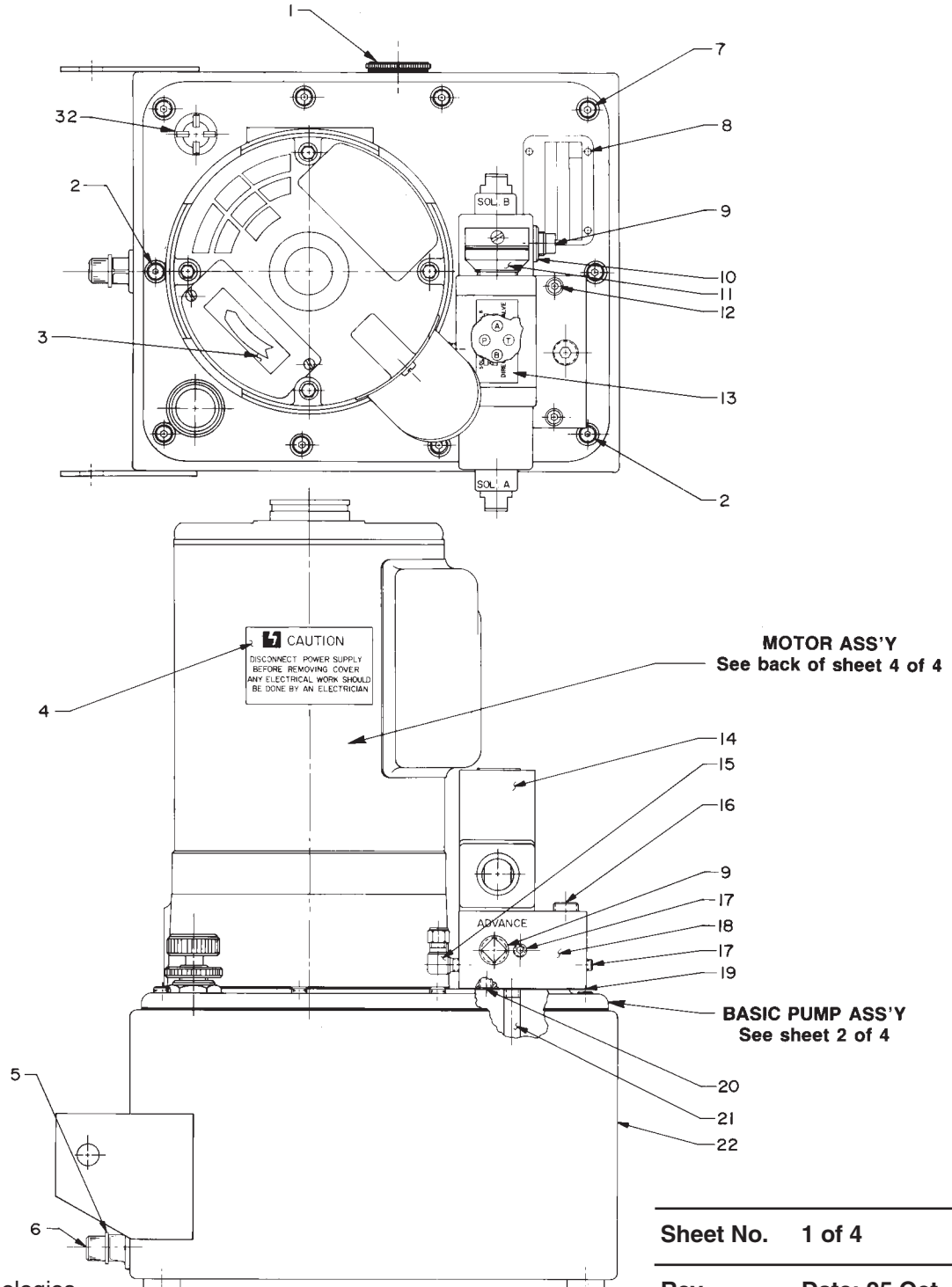


Parts List for:

110-000251E-1  
110-000251E-3

Internet Address:  
<http://www.powerteam.com>

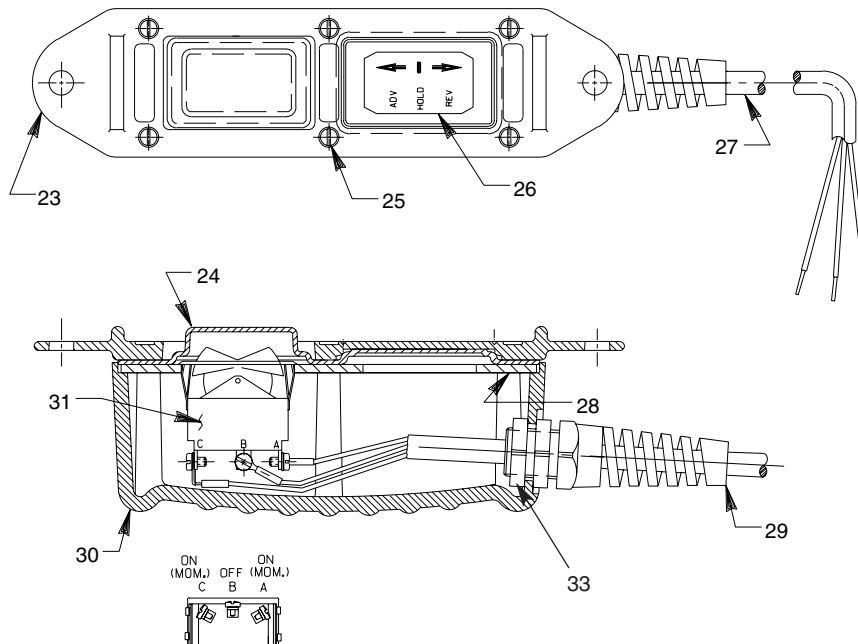
**ELECTRIC HYDRAULIC PUMP  
WITH REMOTE CONTROLLED SOLENOID VALVE  
GENERAL ASSEMBLY**



# Parts List, Form No. 100641, Back sheet 1 of 4

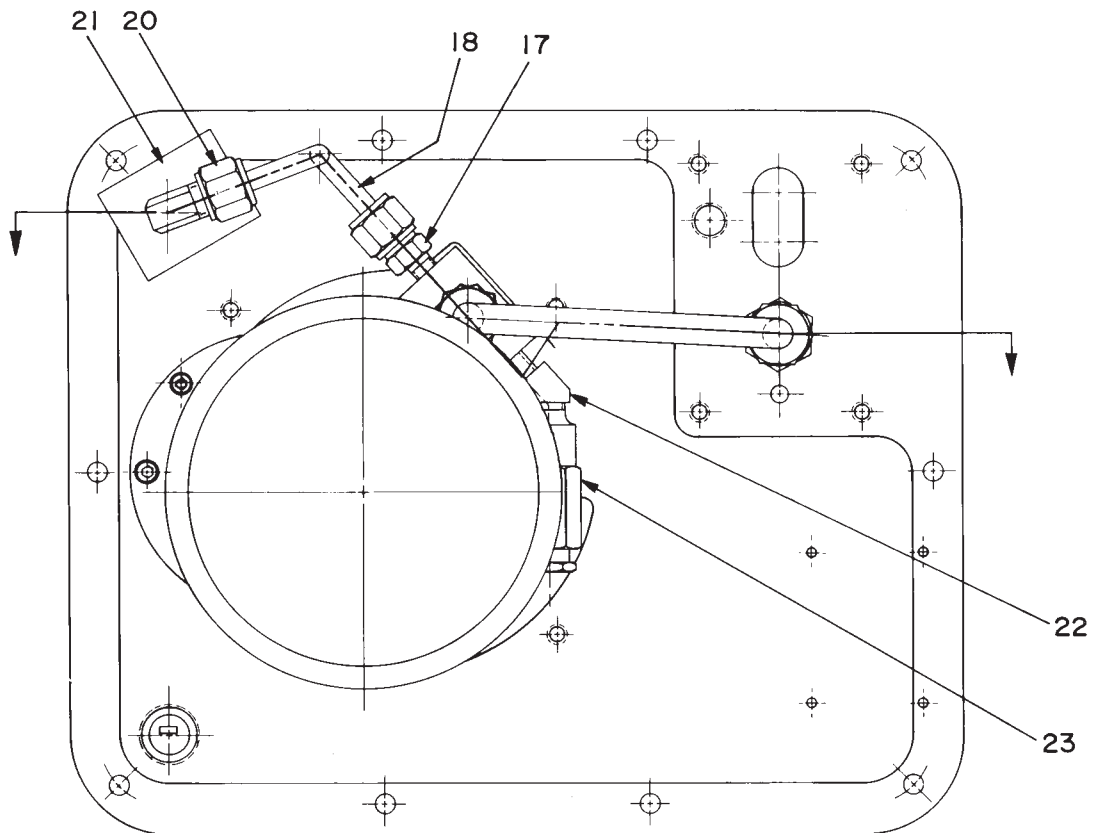
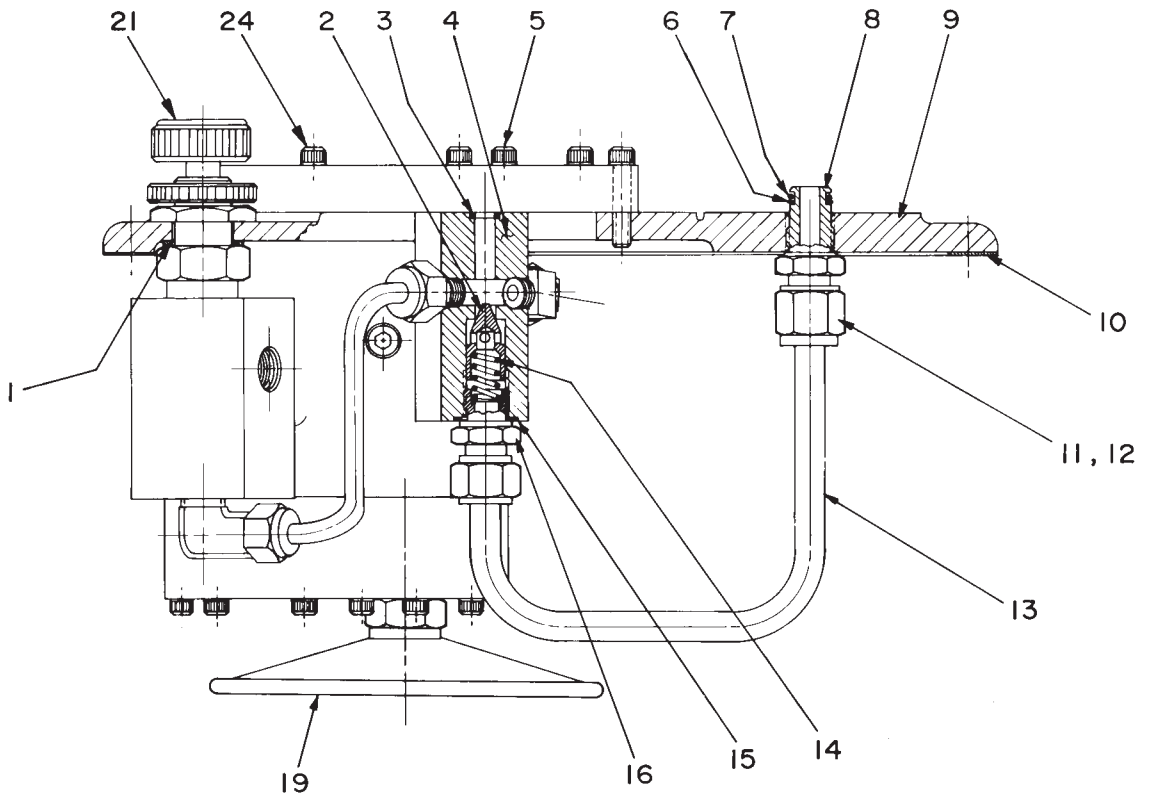
Item No.	Part No.	No. Req'd	Description
1	17586	1	Sight Gauge
2	19268	2	Cap Screw (1/4-20 UNC X 5/8" Lg.)
3	27556	1	Rotation Decal
4	200188	1	Warning Decal
5	213709	1	Washer Seal
6	17075	1	Cap Screw (1/2-13 UNC X 3/4 Lg.)
7	10008	8	Cap Screw (1/4-20 UNC X 3/4 Lg.)
8	10575	4	Drive Screw
9	211061	2	Plastic Pipe Plug
10	9681	1	90° Elbow Fitting
11	17866	1	Connector
12	10890	4	Cap Screw (1/4-20 X 2" Lg.)
13	210399	1	Control Valve Decal
14	16664-4	1	Solenoid Valve
15	*212153	1	90° Elbow Fitting (Complete with Nut and Ferrules)
16	10479	1	Pipe Plug (1/4 NPTF)
17	11084	2	Pipe Plug (1/16 NPTF)
18	51217	1	Manifold
19	203571	1	Valve Gasket
20	15499	1	Pipe Plug (1/8 NPTF)
21	20847	1	Drain Line
22	61369OR9	1	Reservoir
23	420050-1	1	Switch Housing (Top)
24	420050-2	1	Gasket
25	250248	6	Slotted Pan Hd. Tapping Screw (#4-24 x 3/4 Lg.)
26	202776	1	Decal
27	12908	26 ft.	Electrical Cable
28	420050-3	1	Switch Mounting Plate
29	251818	1	Strain Relief Connector
30	420050-4	1	Switch Housing (Bottom)
31	16773	1	Rocker Switch
32	20937	1	Filler Plug
33	251802	1	Locknut

**\*For Ferrules only order 250160;  
For nut only order 250161.**



Note: Shaded areas reflect last revision(s) made to this form.

### GENERAL PUMP ASSEMBLY

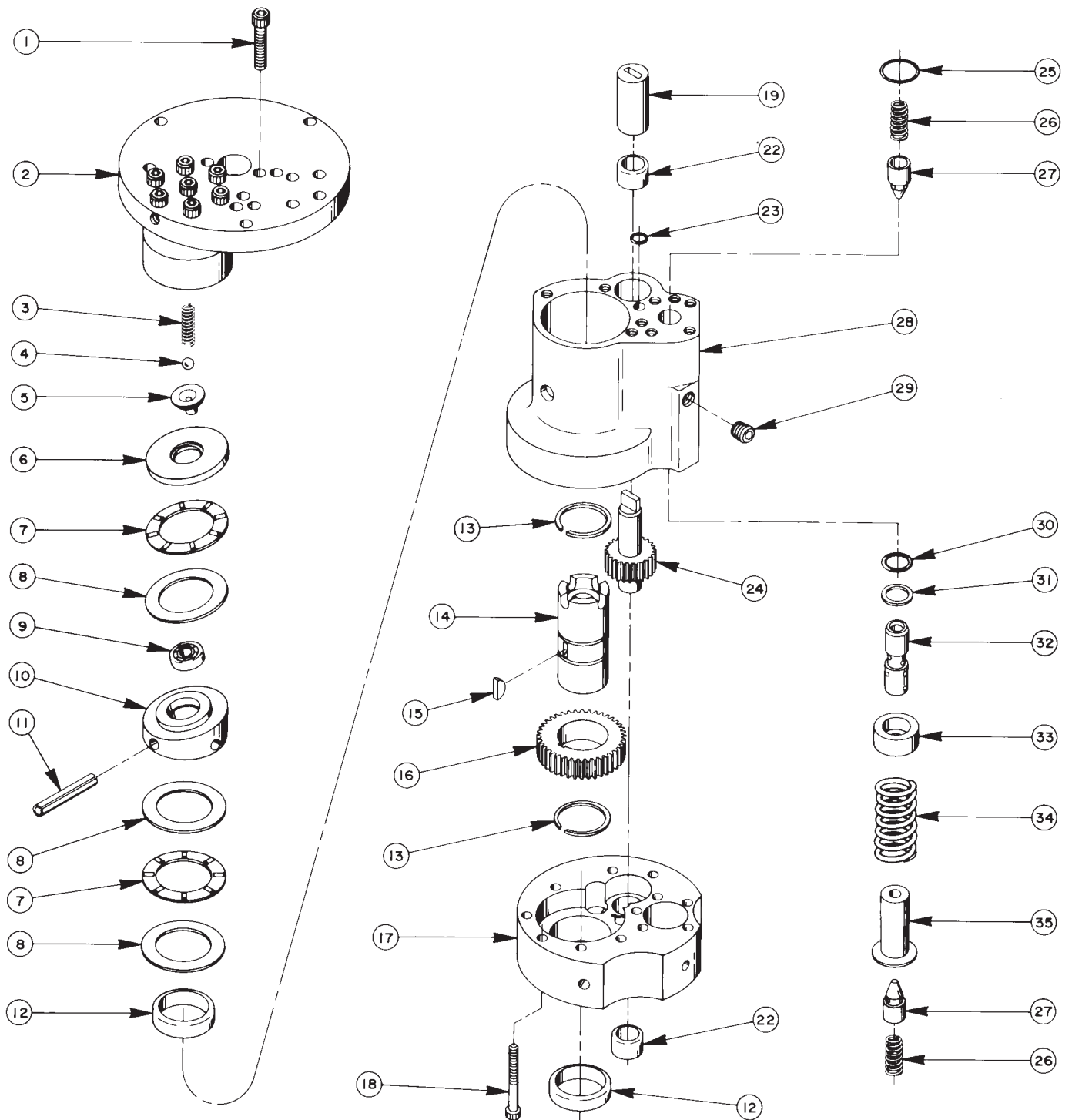


## Parts List, Form No. 100641, Back sheet 2 of 4

---

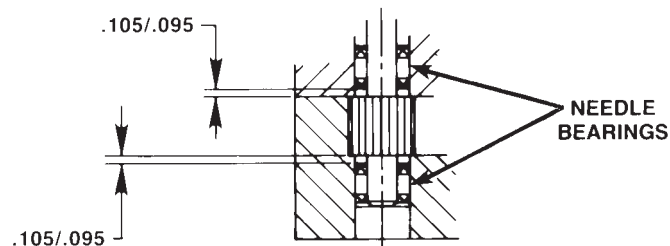
<b>Item No.</b>	<b>Part No.</b>	<b>No. Req'd</b>	<b>Description</b>
1	10263	1	Copper Washer (1" X .765 X 1/32)
2	20771	1	Poppet
3	10266	1	O-ring (3/8" X 1/4 X 1/16, -010)
4	20776	1	Valve Body
5	10015	2	Cap Screw (1/4-28 UNF X 1: Lg.; Torque to 180 in. lbs.)
6	11863	1	Backup Washer (1/2 X 3/8 X 1/16, -012)
7	10268	1	O-ring (1/2 X 3/8 X 1/16, -012)
8	20787	1	Valve Connector
9	40064WH2	1	Cover Plate
10	40164	1	Gasket
11	10430	2	Tube Sleeve
12	10431	2	Tube Nut (5/8-18 UNF)
13	21045	1	Oil Line
14	10425	1	Compression Spring (3/8 O.D. X 3/4 Lg.)
15	10261	1	Copper Washer (3/4 X 19/32 X 1/32)
16	20770	1	Connector
17	15061	1	Straight Fitting
18	307008	1	Oil Line
19	21345	1	Filter
20	205792	1	90° Elbow
21	307007	1	Pressure Regulating Valve Ass'y
22	19121	1	45° Elbow
23	21278-50	1	Relief Valve (Set at 5,100/5,700 PSI)
24	10016	3	Cap Screw (1/4-20 UNC X 1" Lg.)

# BASIC PUMP ASSEMBLY



Item No.	Part No.	No. Req'd	Description
1	10020	9	Soc. Hd. Cap Screw (1/4-20 UNC X 1-1/4 Lg.; Torque to 170-180 in. lbs.)
2	306657	1	High Pressure Pump Ass'y (see sheet 4 of 4)
3	10361	1	Compression Spring (1/4 O.D. X 1" Lg.)
4	10375	1	Steel Ball (1/4" dia.)
5	23547	1	Bearing Top Plate
6	23548	1	Top Plate
7	11228	2	Thrust Bearing
8	11813	3	Bearing Race
9	11814	1	Ball Bearing
10	23549	1	Angle Plate
11	11955	1	Roll Pin
12	11064	2	Needle Bearing
13	11261	2	Retaining Ring (1-1/8 Shaft)
14	23556	1	Shaft
15	11821	1	Woodruff Key
16	23557	1	Gear
17	30533	1	Pump End Plate
18	10001	12	Soc. Hd. Cap Screw (#10-32 UNF X 1-3/4 Lg.; Torque to 50 in. lbs.)
19	21091	1	Coupling
22	11199	2	Needle Thrust Bearing (See note below)
23	10266	1	O-ring (3/8 X 1/4 X 1/16, -010)
24	21272	1	Drive Gear
25	10303	1	O-ring (7/8 X 3/4 X 1/16, -018)
26	10425	2	Compression Spring (3/8 O.D. X 3/4 Lg.)
27	20771	2	Poppet
28	40120	1	Pump Body
29	10427	1	Pipe Plug (1/8" NPTF)
30	10271	1	O-ring (11/16 X 1/2 X 3/32, -112)
31	12389	1	Teflon Backup Washer (11/16 X 1/2 X 1/16, -112)
32	20849	1	Spool
33	23255	1	Spring Guide
34	10426	1	Compression Spring (1" O.D. X 1-13/16 Lg.)
35	23256	1	Spring Guide

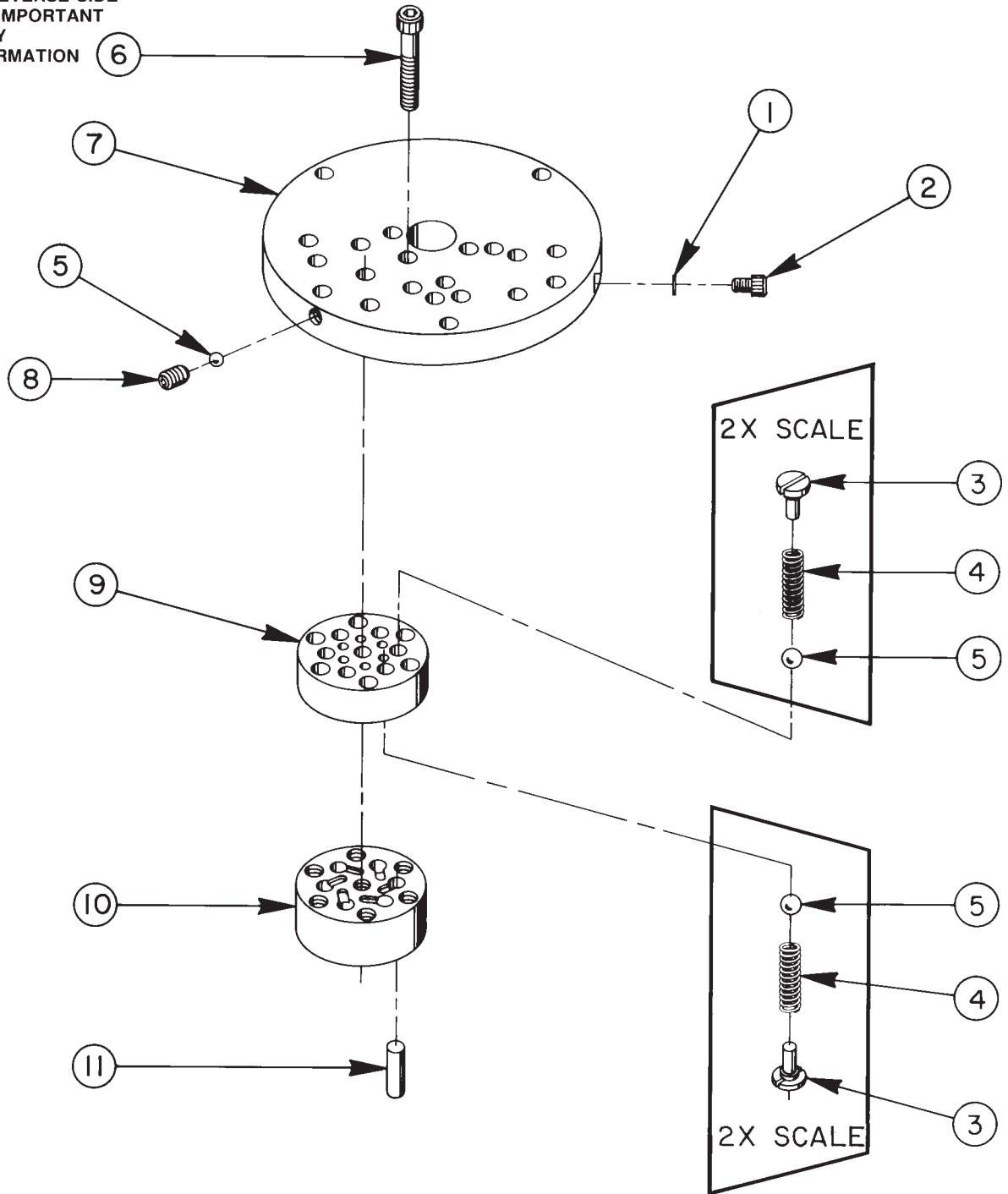
## NEEDLE BEARING INSTALLATION SPECIFICATIONS



When replacing the needle bearings on the drive gear of the basic pump, the dimensions shown must be as specified.

# HIGH PRESSURE PUMP ASSEMBLY

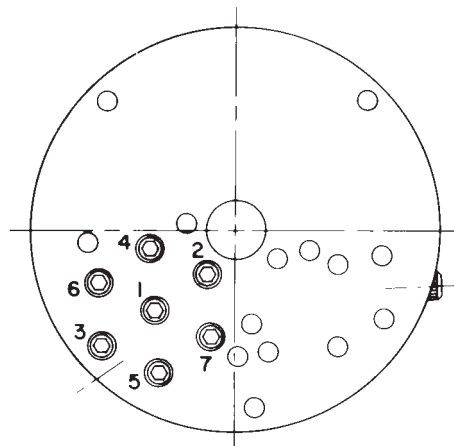
SEE DIAGRAM  
ON REVERSE SIDE  
FOR IMPORTANT  
ASS'Y  
INFORMATION



### 306657 PUMP ASS'Y

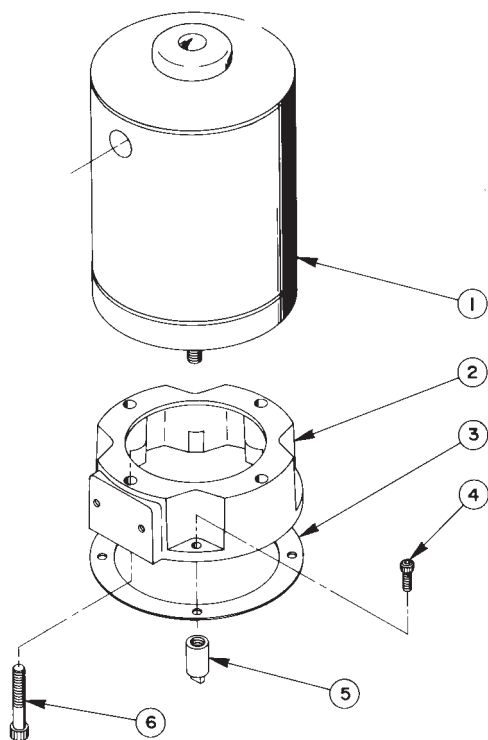
6 PISTONS -- 9/32 Dia.

Item No.	Part No.	No. Req'd	Description
1	10442	1	Copper Washer (3/8 X 1/4 X 1/32)
2	10002	1	Soc. Hd. Cap Screw (1/4-20 UNC X 3/8 Lg.; Torque to 140/160 in. lbs.)
3	24549	11	Valve Guide
4	10445	11	Compression Spring (5/32" O.D. X 3/4 Lg.)
5	12223	12	Steel Ball (3/16" dia.)
6	10023	7	Soc. Hd. Cap Screw (1/4-28 UNF X 1-1/2 Lg.; Torque to 170/180 in. lbs.; See note below)
7	50411	1	Top Plate
8	10519	1	Soc. Set Screw (1/4-20 UNC X 3/8 Lg.; Torque to 65/70 in. lbs.)
9	41048	1	Valve Head
10	41063	1	Pump Barrel
11	21628	6	Piston



### BOLT TIGHTENING SEQUENCE

NOTE: Assemble in sequence shown.  
Lubricate under head and on threads. Torque to 180 in. lbs.



### ELECTRIC MOTOR ASSEMBLY

Item No.	Part No.	No. Req'd	Description
1	10865	1	Electric Motor
2	40118	1	Motor Base
3	30650	1	Gasket
4	10008	4	Cap Screw (1/4-20 UNC X 3/4 Lg.)
5	21274	1	Adapter
6	12866	4	Cap Screw (3/8-16 UNC X 2-1/4 Lg.)