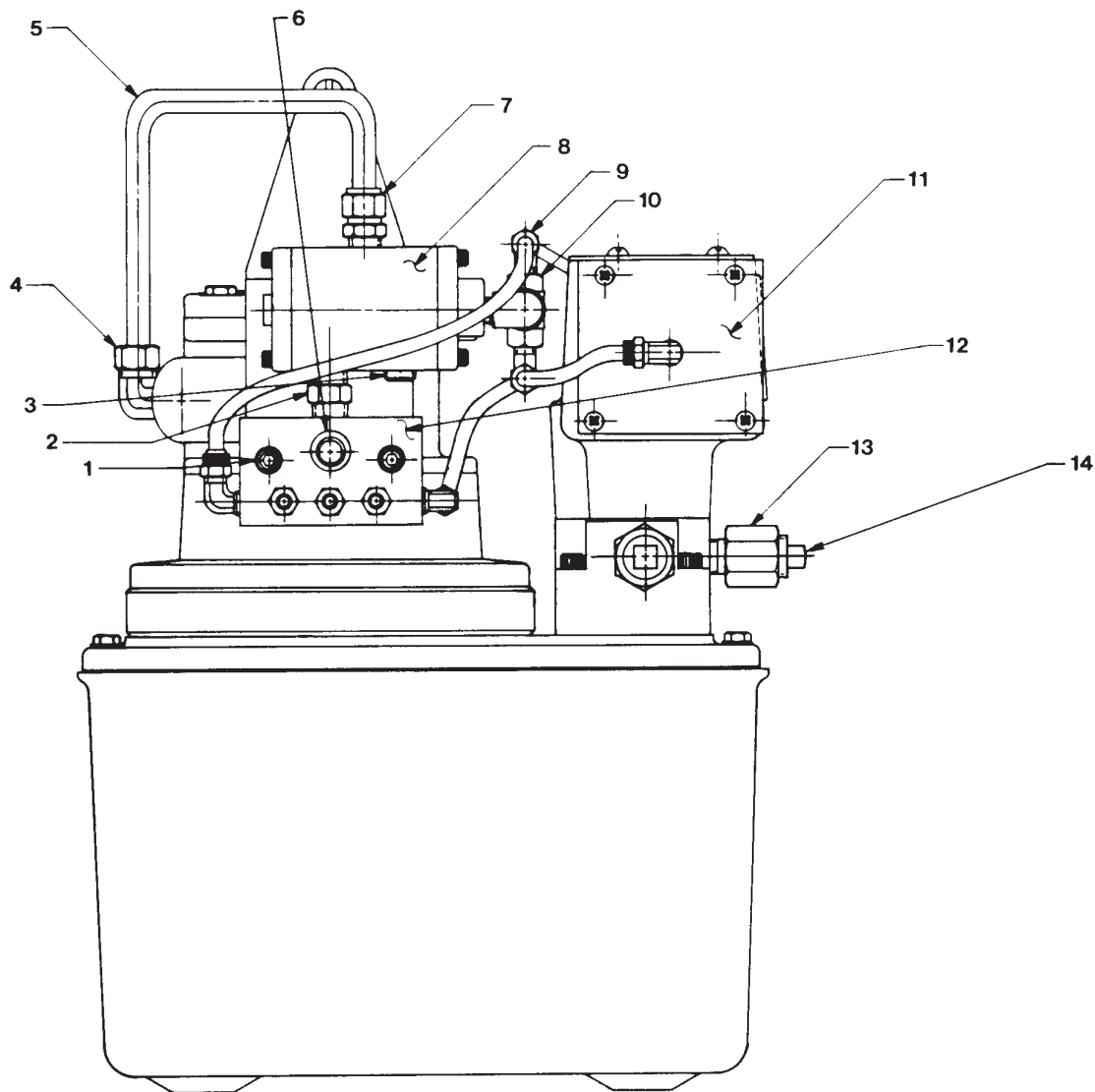


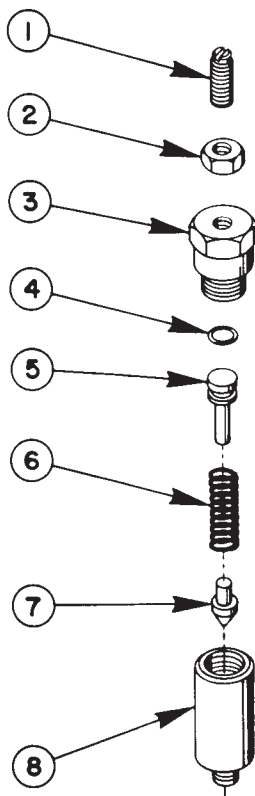
AIR HYDRAULIC PUMP



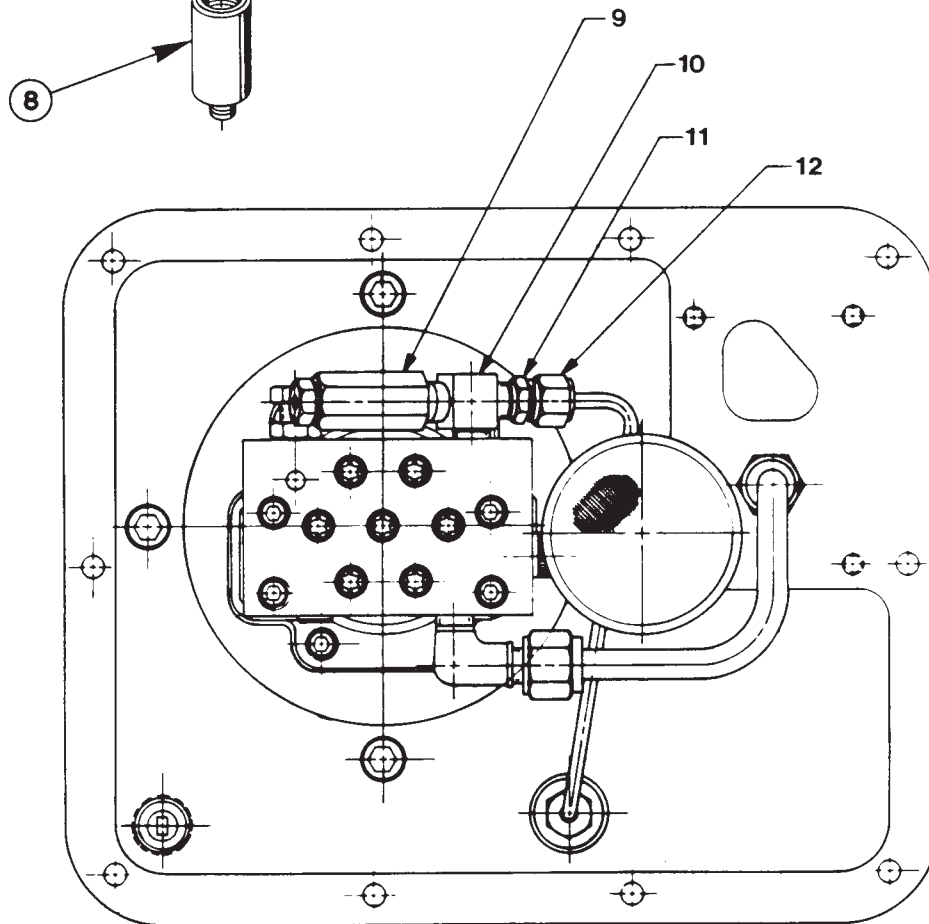
Item No.	Part No.	No. Req'd	Description
1	10022	2	Cap Screw (1/4-20 UNC X 1-1/2 Lg.)
2	16494	1	Straight Fitting
3	10479	1	Pipe Plug (1/4 NPTF)
4	17636	1	90° Elbow
5	212749	1	Copper Tubing
6	14794	1	Plastic Cap
7	17634	1	Straight Fitting

Item No.	Part No.	No. Req'd	Description
8	212404	1	Air Operated Valve
9	15378	2	Tee
10	212405	1	Shuttle Valve
11	61086	1	Valve Ass'y (See Form #100542)
12	37593	1	Air Valve Manifold
13	13888	2	Straight Fitting
14	11036	2	Pipe Plug

PRESSURE REGULATOR ASSEMBLY

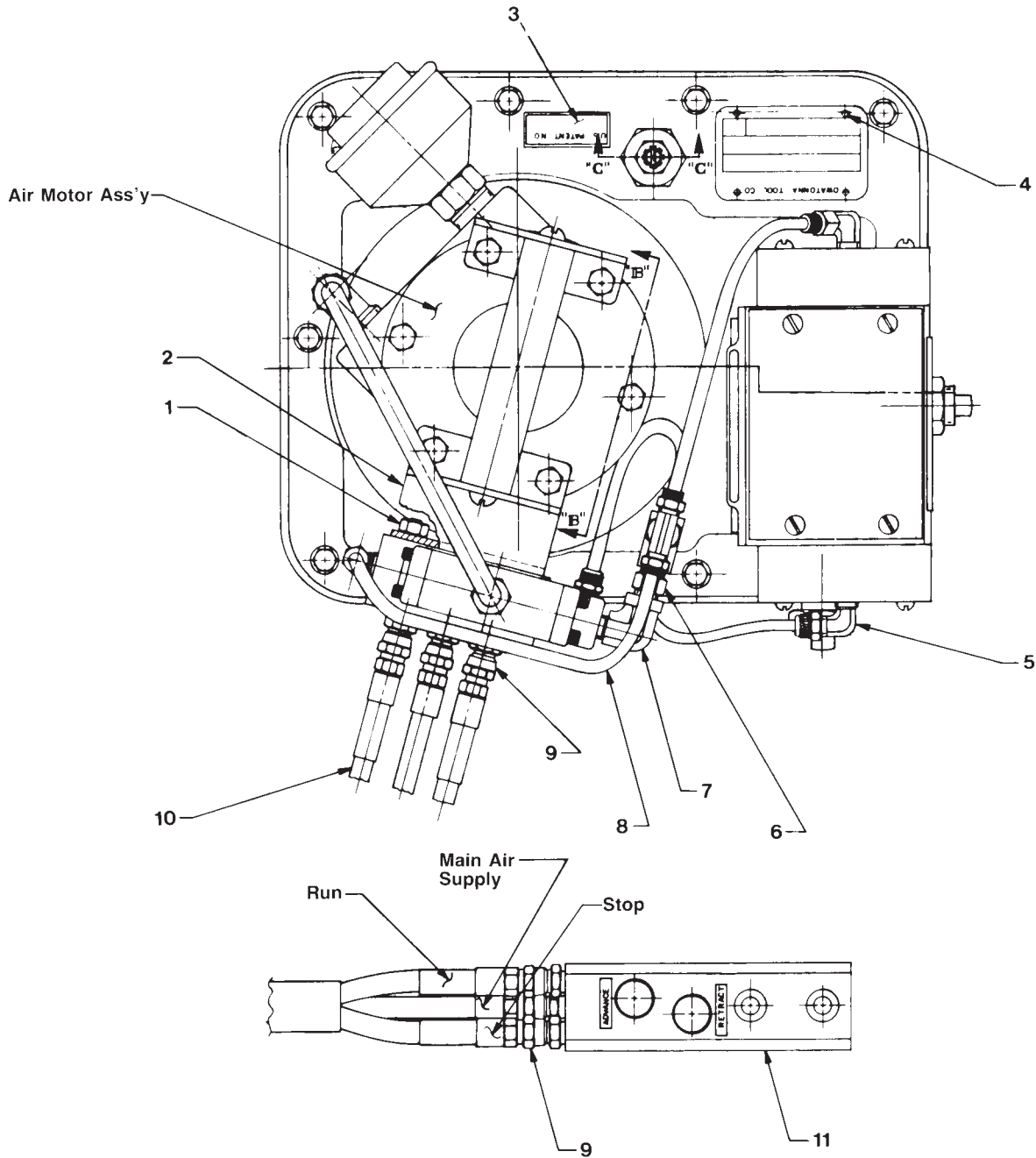


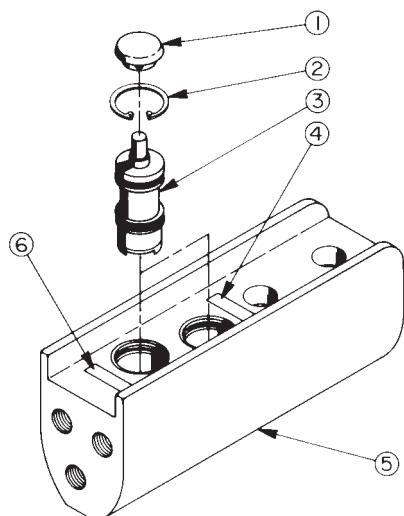
Item No.	Part No.	No. Req'd	Description
1	22362	1	Adjusting Screw
2	10386	1	Hex Jam Nut
3	21305	1	Valve Cap
4	10268	1	O-ring (1/2 X 3/8 X 1/16, -012)
5	21306	1	Spring Guide
6	10495	1	Compression Spring (1/2 O.D. X 1-5/8 Lg.)
7	21046	1	Valve Stem
8	22361	1	Body
9	21278	1	Relief Valve (Set at 10,100/10,700 PSI)
10	24702	1	Regulator Tee
11	14844	1	Straight Fitting
12	201549	1	Oil Line Ass'y



AIR HYDRAULIC PUMP-TOP VIEW

Item No.	Part No.	No. Req'd	Description	Item No.	Part No.	No. Req'd	Description
1	10199	2	Nut	7	13229	1	90° Elbow
2	306588	1	Bracket	8	15883	2.3 Ft.	Plastic Tubing
3	203722	1	Patent No. Decal	9	208218	6	Straight Fitting
4	10575	4	Drive Screw (#2 X 3/16 Lg.)	10	45052	1	Hose Ass'y
5	15045	4	90° Elbow	11	44025	1	Hand Control Ass'y
6	11421	1	Straight Fitting				

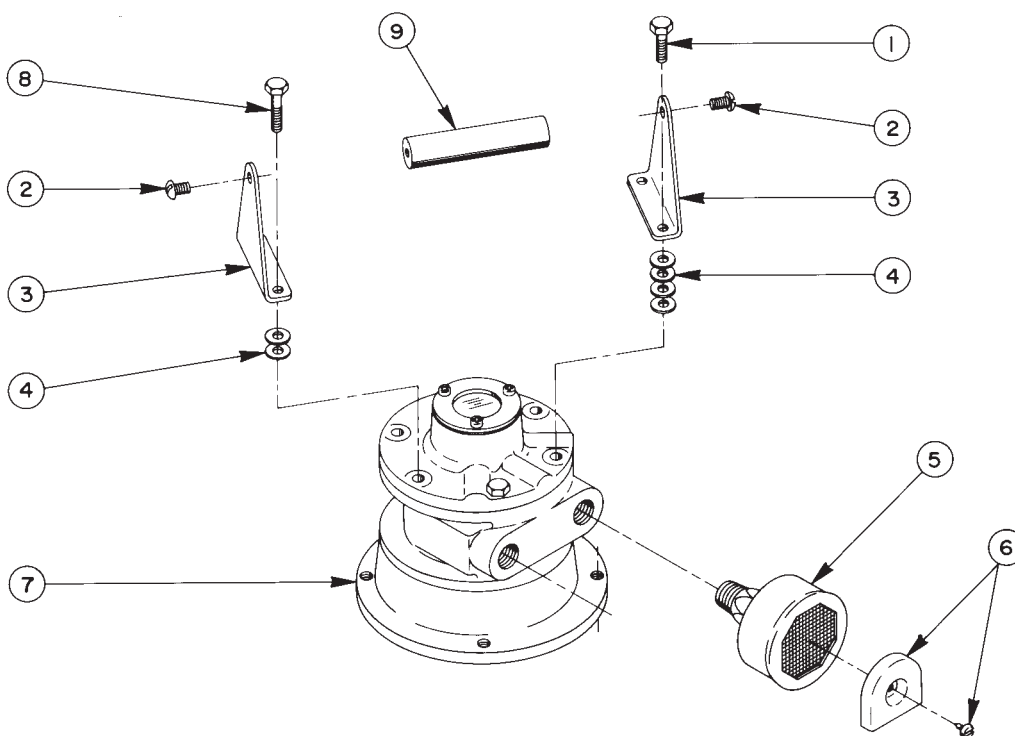




HAND CONTROL ASSEMBLY

Item No.	Part No.	No. Req'd	Description
1	206105	2	Push Button
2	11033	2	Retaining Ring
3	206104	2	Valve Cartridge (Including seals)
4	29664	1	Decal (Retract)
5	44024	1	Control Valve Body
6	29663	1	Decal (Advance)

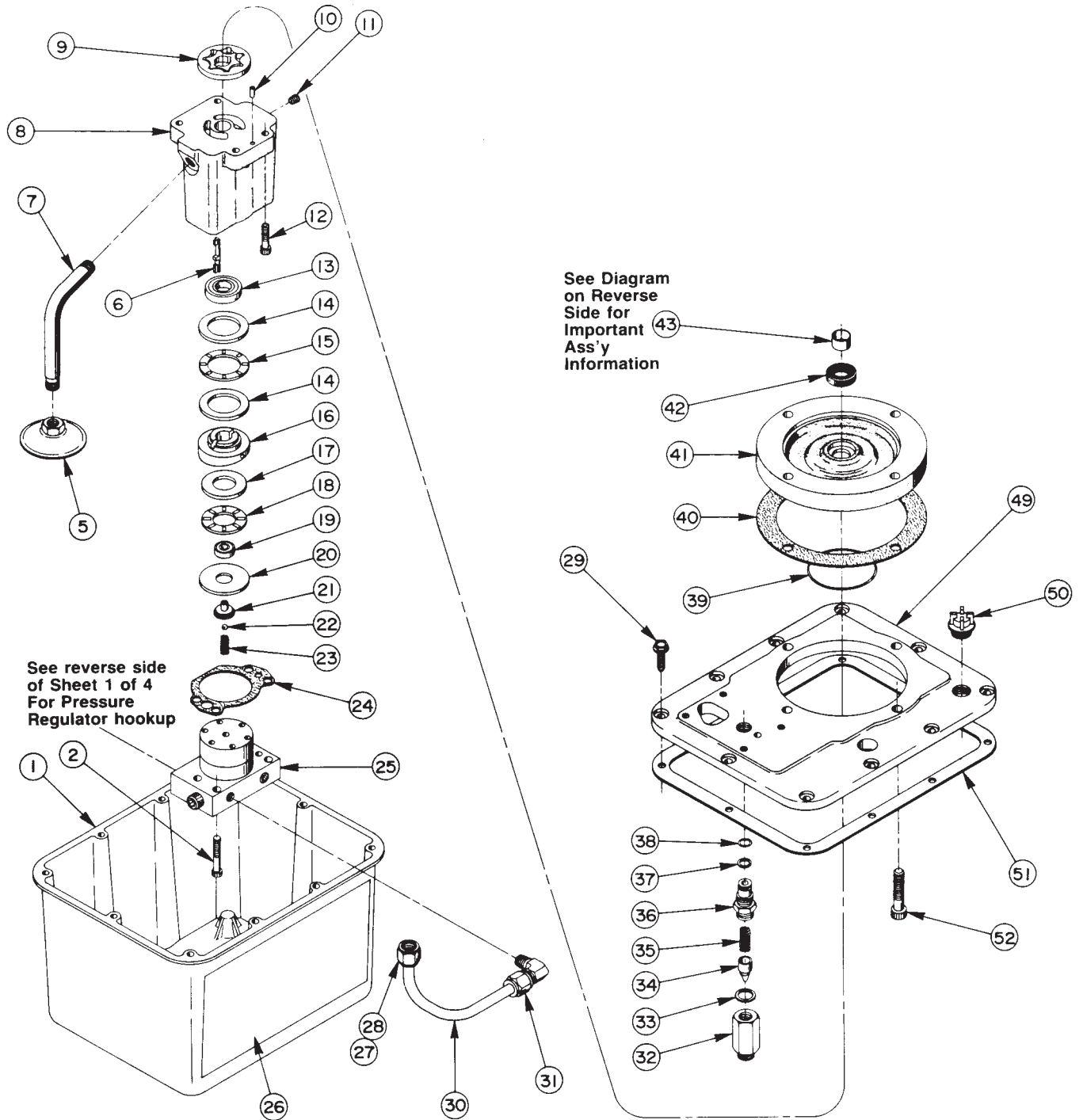
AIR MOTOR ASSEMBLY



Item No.	Part No.	No. Req'd	Description
1	10014	1	Cap Screw (1/4-28 UNF X 1" Lg.)
2	10174	2	Machine Screw (1/4-20 UNC X 1/2 Lg.)
3	33808	2	Handle Bracket
4	12719	12	Washer

Item No.	Part No.	No. Req'd	Description
5	13966	1	Muffler
6	205505	1	Deflector
7	14717	1	Air Motor
8	10018	3	Cap Screw (1/4-28 UNF X 1-1/4 Lg.)
9	28158	1	Handle

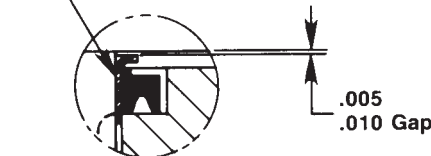
BASIC PUMP ASSEMBLY



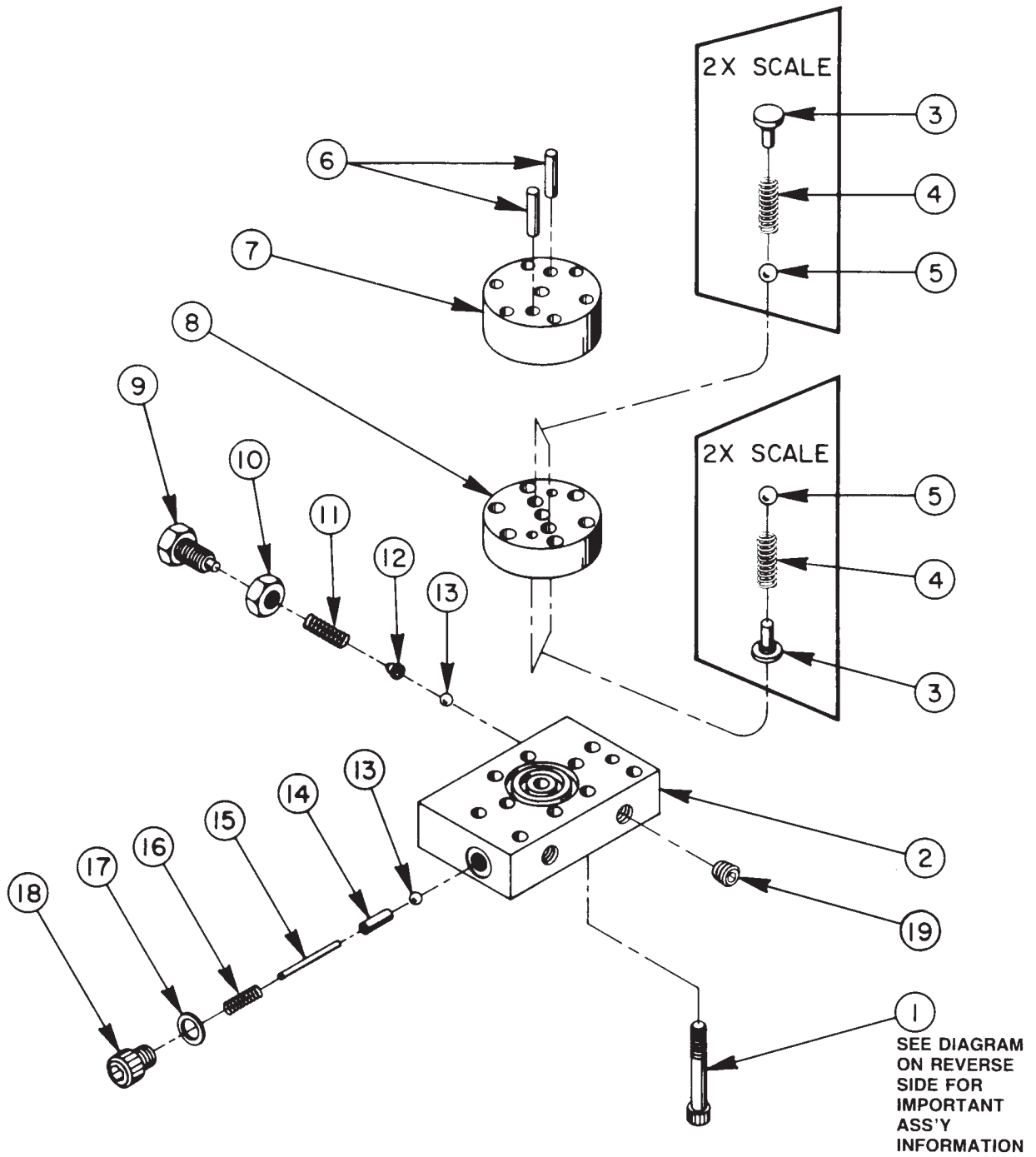
Parts List, Form No. 100659, Back sheet 3 of 4

Item No.	Part No.	No. Req'd	Description	Item No.	Part No.	No. Req'd	Description
1	61165	1	Reservoir	26	307256	2	Trade Name Decal
2	10020	4	Cap Screw (1/4-20 UNC X 1-1/4 Lg.; Torque to 110/120 in. lbs.)	27	10430	1	Tube Sleeve
5	29682	1	Filter	28	10431	1	Tube Nut
6	200798	1	Key	29	209799	10	Screw (1/4-10 X 7/8 Lg Self-tapping)
7	200799	1	Intake Tube	30	36415	1	Tube
8	50752	1	Pump Housing	31	10475	1	90° Connector
9	15693	1	Gerotor Set	32	201879	1	Valve Body
10	10808	1	Dowel Pin	33	10261	1	Copper Washer
11	11084	1	Pipe Plug (1/16 NPTF; Torque to 35/45 in. lbs. oiled)	34	20771	1	Poppet
12	10016	4	Cap Screw (1/4-20 UNC X 1" Lg.; Torque to 90/100 in. lbs.)	35	10425	1	Compression Spring (3/8 O.D. X 3/4 Lg.)
13	15695	1	Ball Bearing	36	201817	1	Valve Connector (Torque to 40/50 ft. lbs.)
14	11227	2	Bearing Race	37	11863	1	Backup Washer (1/2 X 3/8 X 1/16, -012)
15	11228	1	Needle Bearing	38	10268	1	O-ring (1/2 X 3/8 X 1/16, -012)
16	35271	1	Angle Plate	39	15690	1	O-ring (2-5/8 x 2-1/2 x 1/16, -037)
17	15432	1	Bearing Race	40	35541	1	Gasket
18	15431	1	Needle Bearing	41	50751	1	Pump Housing
19	11814	1	Ball Bearing	42	15694	1	Shaft Seal
20	23548	1	Top Plate	43	15696	1	Wear Sleeve (See note below)
21	23547	1	Top Plate Bearing	49	50851	1	Cover
22	10375	1	Steel Ball (1/4 Dia.)	50	20937	1	Vented Filler Cap
23	10361	1	Compression Spring (1/4 O.D. X 1" Lg.)	51	40164	1	Gasket
24	27776	1	Gasket	52	12577	4	Cap Screw (3/8-16 UNC x 1-3/4 Lg.; Torque to 90/100 in. lbs.)
25	36922	1	High Pressure Pump Ass'y (See sheet 4 of 4)				

Apply Permatex to Motor Shaft where
Wear Sleeve (Item 43) is pressed on.



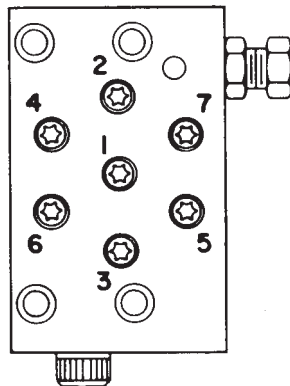
HIGH PRESSURE PUMP ASSEMBLY



Item No.	Part No.	No. Req'd	Description
1	*16747	7	Torx Drive Cap Screw (See diagram below)
2	*36912	1	Pump End Plate
3	*24549	4	Valve Guide
4	*10445	4	Compression Spring (5/32 O.D. X 3/4 Lg.)
5	*12223	4	Steel Ball (3/16 Dia.)
6	*20775	2	Piston
7	*41006	1	Pump Barrel
8	*41007	1	Valve Head
9	200797	1	Adjusting Screw
10	10386	1	Jam Nut (3/8-24 UNF)
11	15691	1	Compression Spring (1/4 O.D. X 5/8 Lg.)
12	200796	1	Spring & Ball Adapter
13	10375	2	Steel Ball (1/4 Dia.)
14	201998	1	Sleeve
15	12571	1	Roll Pin (1/8 Dia. X 1-3/8 Lg.)
16	14431	1	Compression Spring (3/16 O.D. X 3/4 Lg.)
17	12042	1	Copper Washer (9/16 X 3/8 X 1/32)
18	29690	1	Cap Screw (Torque to 180 in. lbs.)
19	10427	1	Pipe Plug (1/8 NPTF)

Consult factory when replacing items marked with an asterisk (*).

BOLT TIGHTENING SEQUENCE



NOTE: Assemble in sequence shown. Lubricate under head and on threads. Torque to 170 in. lbs.

Refer to any operating instructions included with this product for detailed information about operation, testing, disassembly, reassembly, and preventive maintenance.

Items found in this parts list have been carefully tested and selected. **Therefore: Use only genuine Power Team replacement parts!**

Additional questions can be directed to our Technical Services Department.