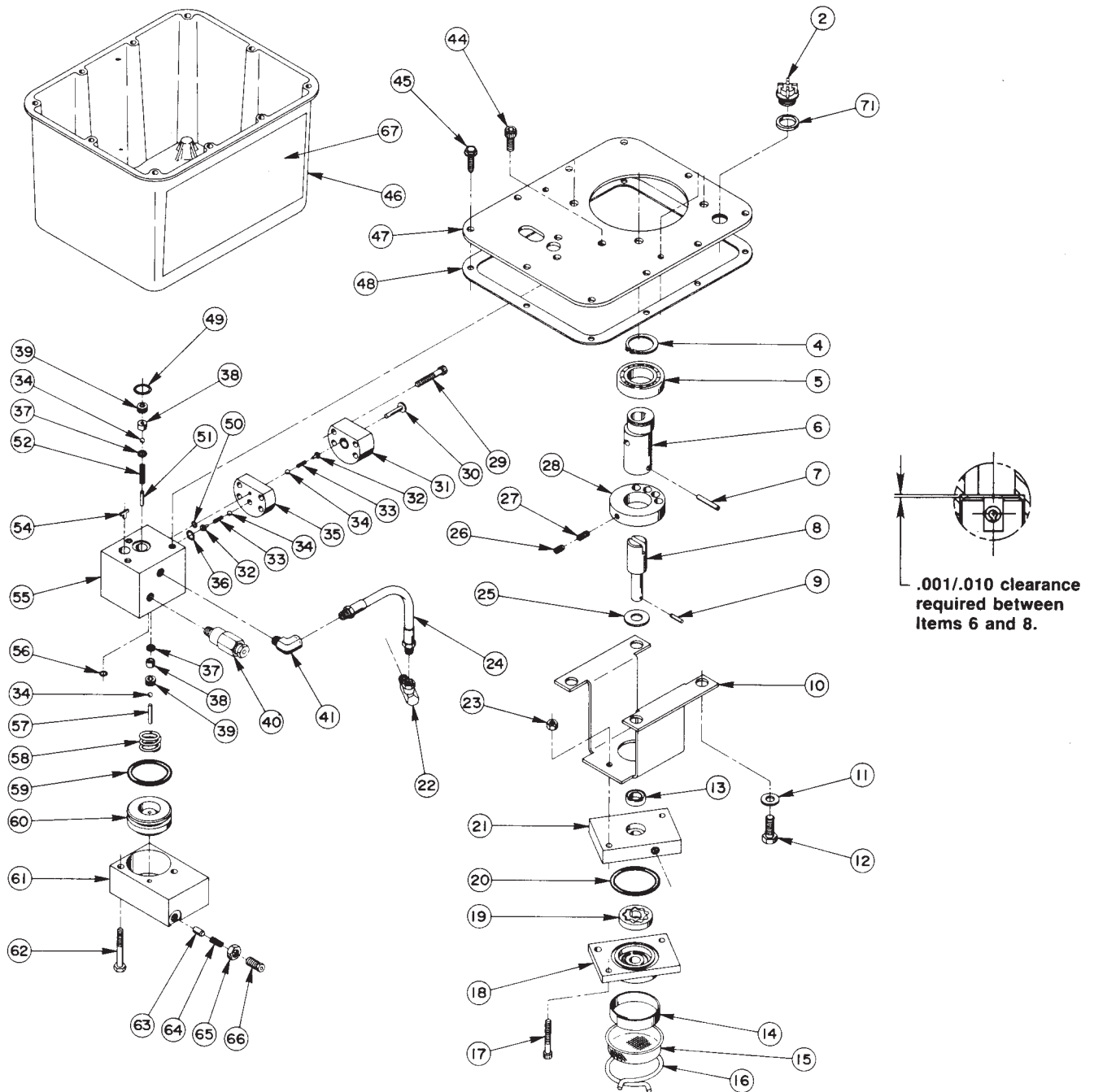


ELECTRIC HYDRAULIC PUMP



Parts List, Form No. 100660, Back sheet 1 of 3

Item No.	Part No.	No. Req'd	Description	Item No.	Part No.	No. Req'd	Description
2	20937	1	Filler/Vent Plug	39	209797	2	Hollow Lock Screw (7/16-20 UNF-3A; Torque to 180/200 in. lbs.)
	†27142	1	Filler/Vent Plug	40	21278	1	Relief Valve Assembly (Set at 10,100/10,700 PSI)
4	209798	1	Retaining Ring	41	13229	1	90° Elbow
5	209805	1	Ball Bearing	44	10030	3	Cap Screw (5/16-18 UNC X 3/4 Lg.; Torque to 220/240 in. lbs.)
6	45596	1	Eccentric	45	209799	9	Machine Screw (1/4-10 X 7/8 Lg.; Self-tapping; Torque to 50/60 in. lbs.)
7	10973	1	Slotted Spring Pin	46	61165	1	Reservoir
8	304835	1	Drive Shaft	47	61166BK2	1	Cover Plate
9	209794	1	Gerotor Drive Pin	48	*40164	1	Cover Gasket
10	52174	1	Pump Mounting Bracket	49	*10273	1	O-ring (13/16 X 5/8 X 3/32)
11	10258	4	Washer (For 3/8 bolt)	†250157		1	O-ring (13/16 X 5/8 X 3/32)
12	10048	4	Cap Screw (3/8-16 UNC X 7/8 Lg.; Torque to 230/250 in. lbs.)	50	*10265	1	O-ring (5/16 X 3/16 X 1/16)
13	*304830	1	Seal	†17714		1	O-ring (5/16 X 3/16 X 1/16)
	†250156	1	Seal	51	12149	1	Dowel Pin
14	21846	1	Filter Support	52	*16057	1	Compression Spring (3/16 O.D. X 1" Lg.)
15	21608	1	Filter	54	209795	1	Outlet Ball Stop
16	11461	1	Clamp Ring	55	61167	1	Check Body
17	10854	2	Cap Screw (1/4-20UNC X 1-3/4 Lg.; Torque to 60/80 in. lbs.)	56	*10266	1	O-ring (3/8 X 1/4 X 1/16)
18	61169	1	Lower Gerotor Housing	†17715		1	O-ring (3/8 X 1/4 X 1/16)
19	304826	1	Gerotor Set	57	211843	1	Dowel Pin (Loctite pin in piston hole with radius end out)
20	*10922	1	O-ring (2-1/8 X 1-15/16 X 3/32)	58	*16346	1	Compression Spring (1" O.D. X 7/8 Lg.)
	†250158	1	O-ring (2-1/8 X 1-15/16 X 3/32)	59	*10283	1	O-ring (2" X 1-5/8 X 3/16)
21	61170	1	Upper Gerotor Housing	†250159		1	O-ring (2" X 1-5/8 X 3/16)
22	14440	1	Swivel Elbow Fitting	60	46063	1	Automatic Valve Piston
23	10199	2	Nut (1/4-20 UNC)	61	52167	1	Automatic Valve Block
24	304819	1	Hose Assembly	62	13037	2	Cap Screw (1/4-20 UNC X 2" Lg.; Torque to 40/50 in. lbs.)
25	12595	1	Brass Washer (1-1/8 X 1/2 X .077 Thk.)	63	15156	1	Dowel Pin (Install tapered end toward spring)
26	10519	1	Set Screw (1/4-20 UNC X 3/8 Lg.; Torque to 60/80 in. lbs.)	64	*15691	1	Compression Spring (1/4 O.D. X 5/8 Lg.)
27	10138	1	Set Screw (1/4-20 UNC X 1/2 Lg.; Torque to 60/80 in. lbs.)	65	10386	1	Locknut (3/8-24 UNF)
28	304886	1	Counterweight	66	29786	1	Adjusting Screw
29	10022	4	Cap Screw (1/4-20 UNC X 1-1/2 Lg.; Torque to 180/200 in. lbs.)	67	304841	2	Trade Name Decal
30	304820	1	High Pressure Piston	71	200415	1	Rubber Seal
31	45560	1	Piston Block	†17723		1	Rubber Seal
32	24549	2	Valve Guide	PARTS INCLUDED BUT NOT SHOWN			
33	*10445	2	Compression Spring (5/32 O.D. X 3/4 Lg.)	†11278		1	Tube Elbow
34	*12223	4	Ball (3/16 Dia.)	†15061		1	Male Connector
35	45559	1	Check Block	†251229		1	Oil Line
36	*14763	1	O-ring (7/16 X 5/16 X 1/16)	†250328		1	Decal (EPR Seals)
	†13472	1	O-ring (7/16 X 5/16 X 1/16)				
37	*10442	2	Copper Washer (3/8 X 1/4 X 1/32)				
38	*209787	2	Replaceable Seat				

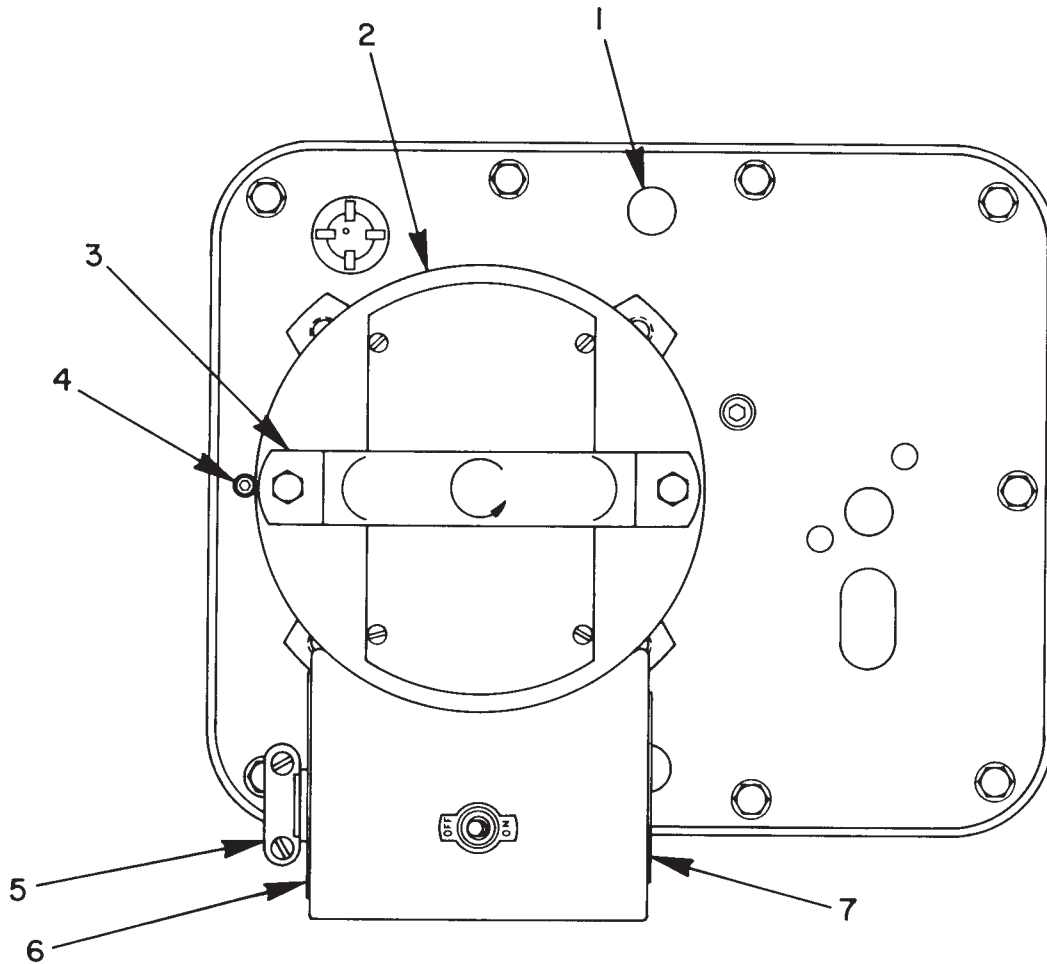
Part numbers marked with an asterisk (*) are contained in Repair Kit No. 300430.
 Part numbers marked with a dagger (†) are contained in EPR Seal Kit No. 300648.

Refer to any operating instructions included with this product for detailed information about operation, testing, disassembly, reassembly, and preventive maintenance.

Items found in this parts list have been carefully tested and selected. **Therefore: Use only genuine Power Team replacement parts!**

Additional questions can be directed to our Technical Services Department.

TOP VIEW



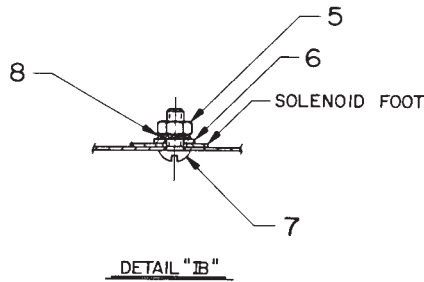
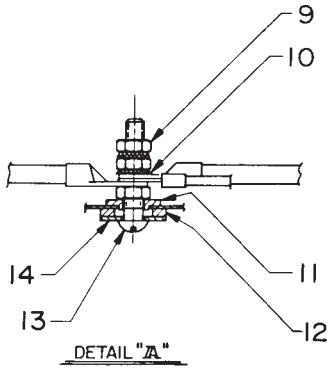
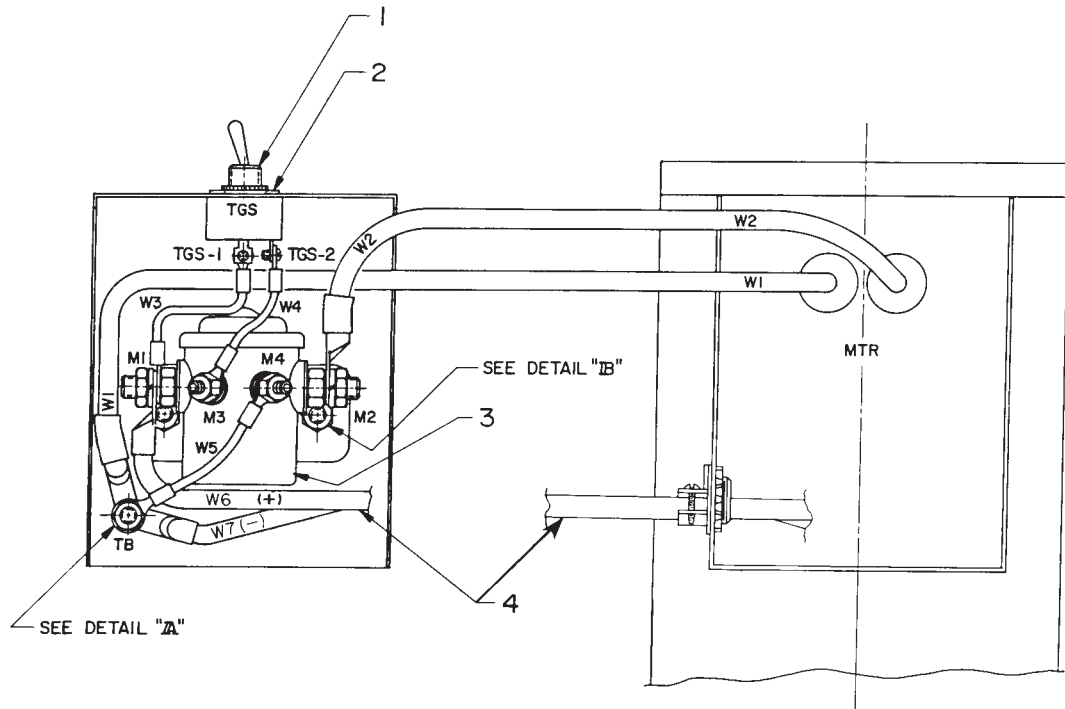
Item No.	Part No.	No. Req'd	Description
1	211594	2	Rubber Bumper
2	52384	1	Electric D.C. Motor
3	305225	1	Handle (NOTE: Remove only one Tie Rod Screw at a time when installing handle)
4	15668	1	Set Screw (1/4-20 UNC X 1/2 Lg.)
5	211240	1	Conduit Connector
6	210882	1	Warning Decal
7	304850	1	Warning Decal

PARTS INCLUDED BUT NOT SHOWN

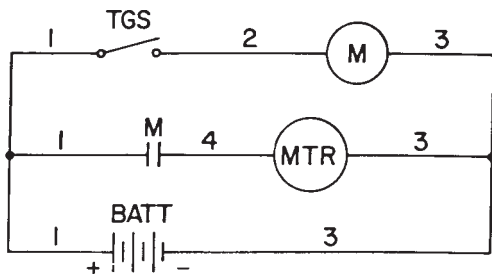
351060	1	Gasket (Between motor and cover plate)
--------	---	--

Note: Shaded areas reflect last revision(s) made to this form.

ELECTRICAL CONTROL ASSEMBLY

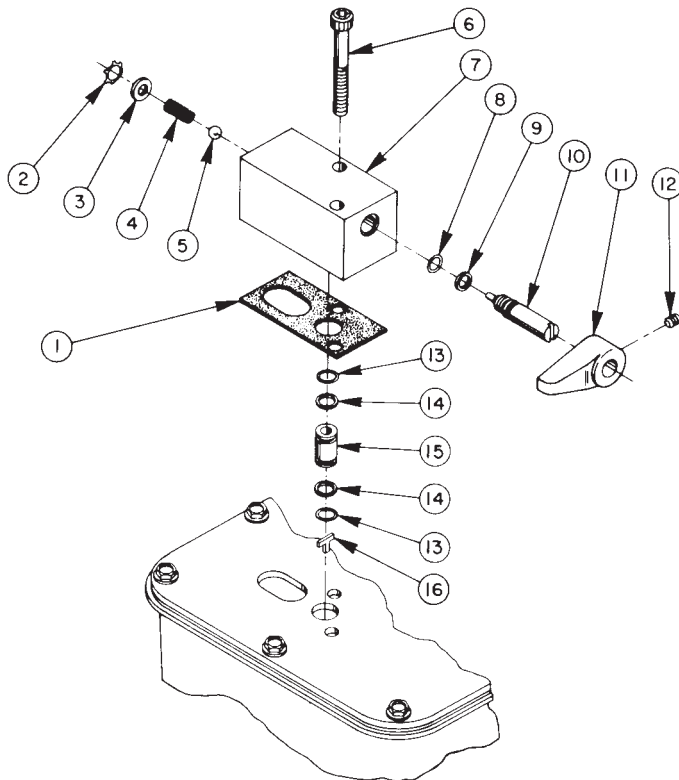


ELECTRICAL SCHEMATIC
12 V.D.C.



Item No.	Part No.	No. Req'd	Description
1	12301	1	Toggle Switch
2	13890	1	Indicator Switch Plate
3	14912	1	Solenoid
4	306972	1	Battery Cable
5	10197	2	Nut (#10-24 UNC)
6	11089	2	Washer (#10 bolt)
7	12354	2	Machine Screw (10-24 UNC X 5/8 Lg.)
8	11108	2	Lockwasher (#10 External Tooth)
9	10199	3	Nut (1/4-20 UNC)
10	11351	2	Lockwasher (1/4 External Tooth)
11	202614	1	Nylon Seal
12	210887	1	Rubber Washer
13	10614	1	Machine Screw (1/4-20 UNC X 1-1/2 Lg.)
14	17160	1	Special Washer

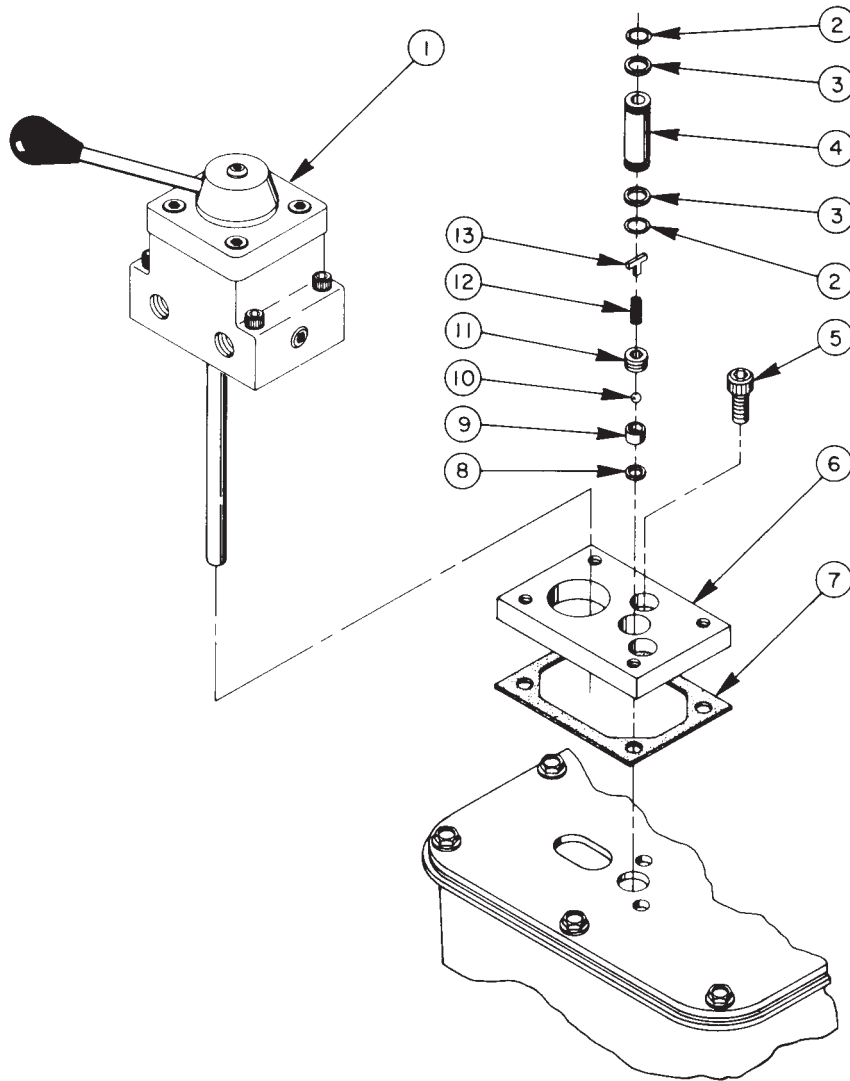
TWO POSITION, 2-WAY MANUAL VALVE



Item No.	Part No.	No. Req'd	Description
1	*304829	1	Gasket
2	*11088	1	Retaining Ring
3	11089	1	Washer (#10 bolt)
4	*11024	1	Compression Spring (1/4 O.D. X 5/8 Lg.)
5	*10375	1	Steel Ball (1/4 Dia.)
6	209945	2	Cap Screw (5/16-18 UNC X 2-1/2" Lg.; Torque to 220/240 in. lbs.)
7	52168	1	Valve Body
8	*10267	1	O-ring (7/16 X 5/16 X 1/16)
	†13472	1	O-ring (7/16 X 5/16 X 1/16)
9	*15085	1	Backup Washer (7/16 X 5/16 X 3/64 Thk.)
10	304849	1	Release Valve Screw
11	213109	1	Knob
12	10556	1	Set Screw (1/4-20 UNC X 1/4 Lg.)
13	*10268	2	O-ring (1/2 X 3/8 X 1/16)
	†17716	2	O-ring (1/2 X 3/8 X 1/16)
14	*11863	2	Backup Washer (1/2 X 3/8 X 1/16)
15	202505	1	Coupling
16	209795	1	Outlet Ball Stop (Part of the Basic Pump Assembly)
	52170	1	Complete Valve Assembly (Consists of items 1 through 15)

Part numbers marked with an asterisk (*) are contained in Repair Kit No. 300430.
 Part numbers marked with a dagger (†) are contained in EPR Seal Kit No. 300648.

4-WAY TANDEM CENTER DIRECTIONAL VALVE



Item No.	Part No.	No. Req'd	Description
1	9586	1	4-Way Valve Assembly (See Form No. 100388)
2	*10268	2	O-ring (1/2 X 3/8 X 1/16)
	†17716	2	O-ring (1/2 X 3/8 X 1/16)
3	*11863	2	Backup Washer (1/2 X 3/8 X 1/16)
4	209809	1	Coupling
5	10030	2	Cap Screw (5/16-18 UNC X 3/4 Lg.; Torque to 220/240 in. lbs.)
6	52165	1	Adapter Block Manifold

Item No.	Part No.	No. Req'd	Description
7	*200395	1	Gasket
8	*10442	1	Copper Washer (3/8 X 1/4 X 1/32)
9	*209787	1	Replaceable Seat
10	*12223	1	Steel Ball (3/16 Dia.)
11	209797	1	Hollow Lock Screw (7/16-20 UNF-3A; Torque to 110/130 in. lbs.)
12	*14282	1	Compression Spring (3/16 O.D. X 1/2 Lg.)
13	209795	1	Outlet Ball Stop

Part numbers marked with an asterisk (*) are contained in Repair Kit No. 300430
 Part numbers marked with a dagger (†) are contained in EPR Seal Kit No. 300648.