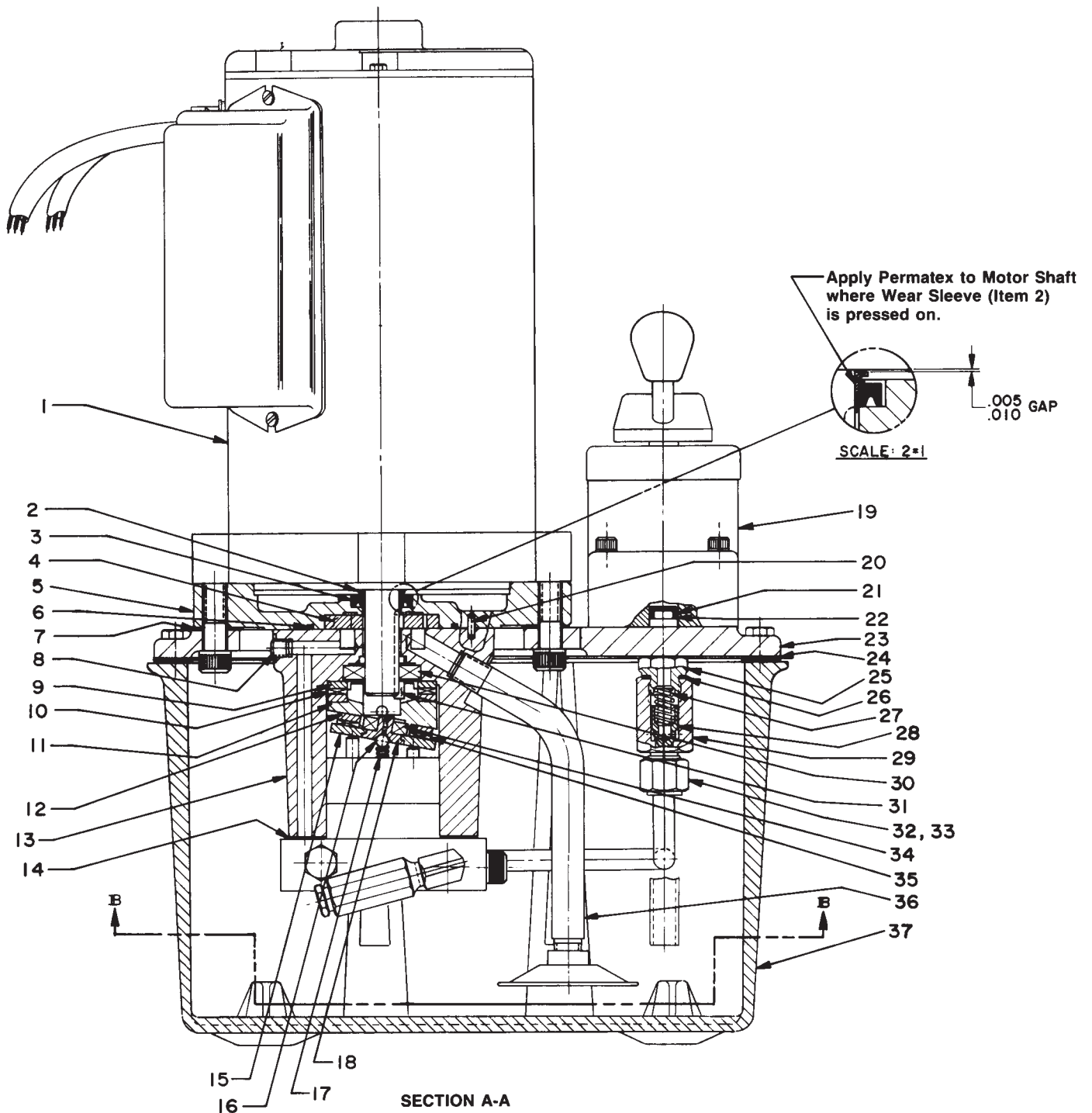


MODEL C ELECTRIC HYDRAULIC PUMP



Parts List, Form No. 100676, Back sheet 1 of 3

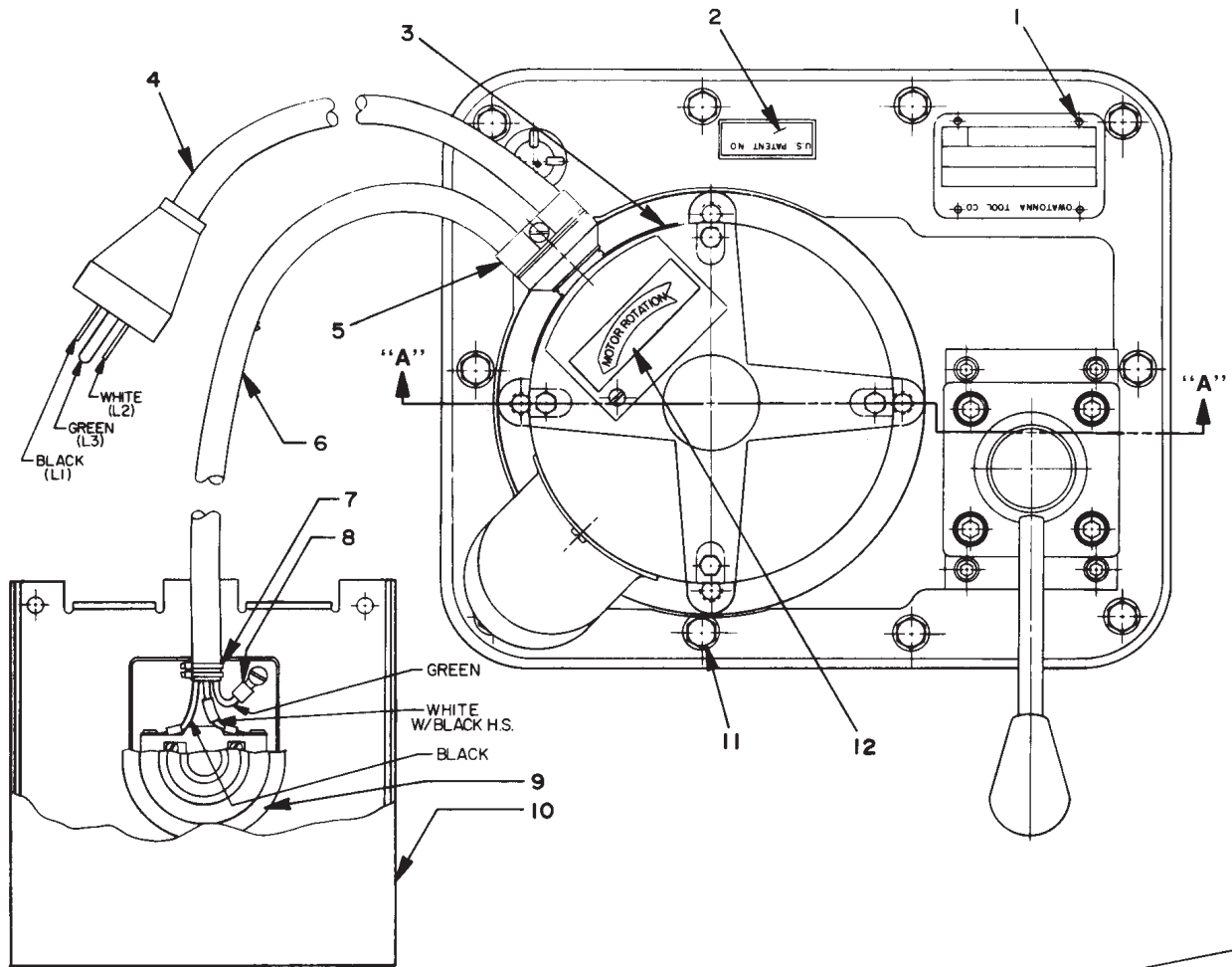
Item No.	Part No.	No. Req'd	Description
1	18591	1	Electric Motor
2	15696	1	Wear Sleeve
3	15694	1	Shaft Seal
4	15693	1	Gerotor Set
5	50751	1	Pump Housing
6	15690	1	"O" Ring
7	35541	1	Motor Base Gasket
8	11084	1	Pipe Plug (Torque to 35/40 in. lb. oiled)
9	11227	2	Needle Thrust Bearing Race
10	11228	1	Needle Thrust Bearing
11	35271	1	Angle Plate
12	15432	1	Needle Thrust Bearing Race
13	50752	1	Pump Housing
14	27776	1	Gasket
15	23548	1	Top Plate
16	10375	1	Steel Ball
17	10361	1	Spring
18	23547	1	Top Plate Bearing
19	9500	1	Valve Ass'y (See Form 100623)
20	10808	1	Dowel Pin
21	10268	1	"O" Ring
22	11863	1	Backup Washer
23	50750-BK2	1	Reservoir Cover
24	40164	1	Gasket
25	201817	1	Valve Connector (Torque to 40/50 ft. lbs.)
26	10261	1	Copper Washer
27	10425	1	Comp. Spring
28	20771	1	Poppet
29	201879	1	Check Valve Body
30	15695	1	Ball Bearing
31	200798	1	Key
32	10430	1	Tube Sleeve
33	10431	1	Tube Nut
34	11814	1	Ball Bearing
35	15431	1	Needle Thrust Bearing
36	200799	1	Intake Tube
37	61165	1	Reservoir

Refer to any operating instructions included with the product for detailed information about operation, testing, disassembly, reassembly, and preventive maintenance.

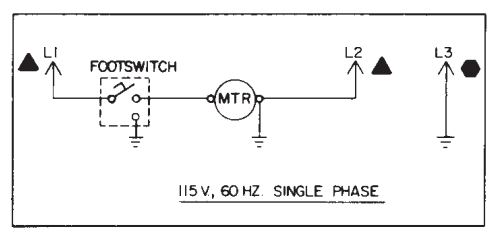
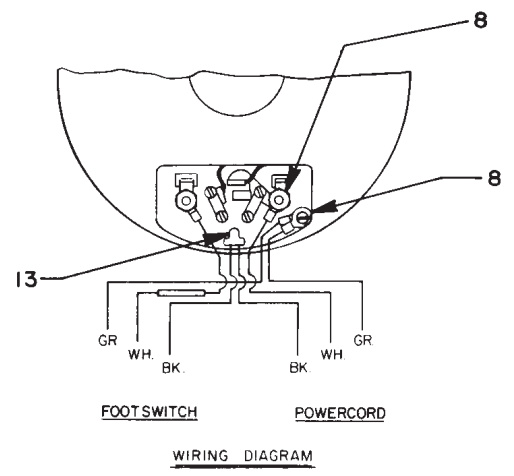
Items found in this parts list have been carefully tested and selected. **Therefore: Use only genuine replacement parts!**

Additional questions can be directed to one of our Technical Services Departments.

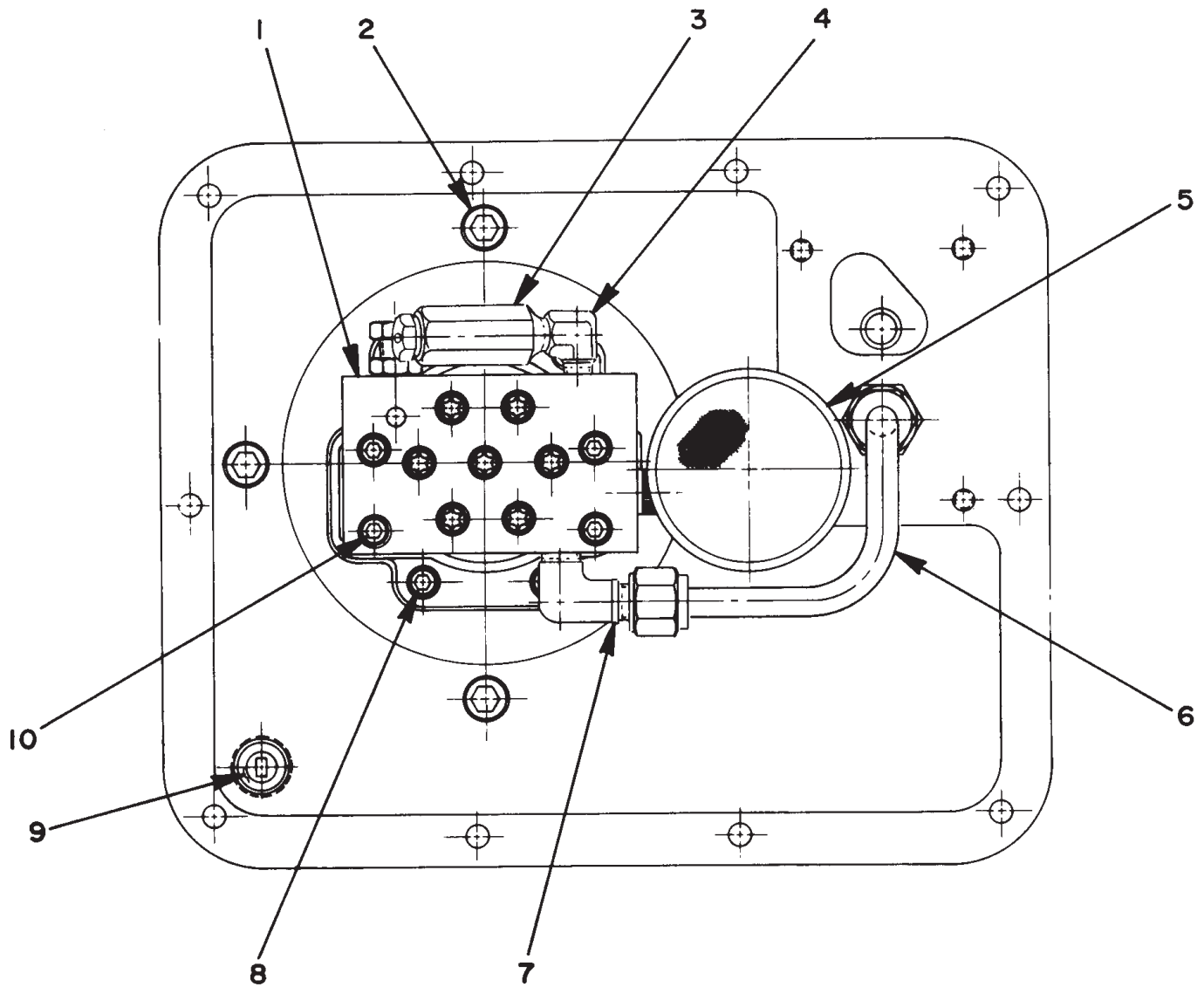
TOP VIEW



Item No.	Part No.	No. Req'd	Description
1	10575	4	Drive Screw
2	203722	1	Patent Decal
3	200188	1	Caution Decal
4	307440	1	Cord Set
5	17866	1	Connector
6	307439	8 ft.	Wire Cable
7	12313	2	Cable Tie
8	19736	5	Ring Tongue Terminal
9	213710	1	Foot Switch
10	16339	1	Foot Switch Guard
11	209799	14	Screw
12	202504	1	Motor Rotation Decal
13	11296	1	Crimp Type Connector

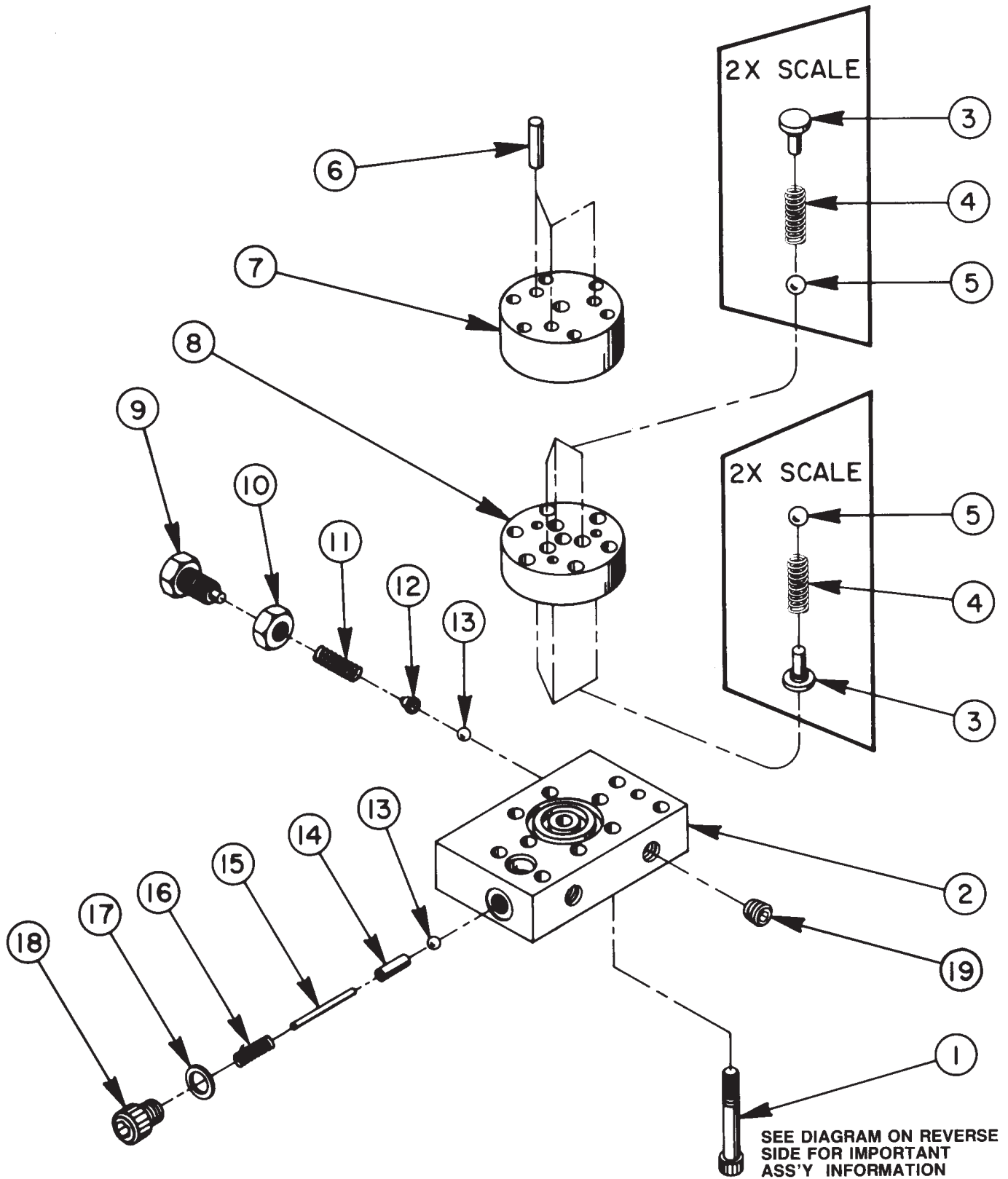


BOTTOM VIEW



Item No.	Part No.	No. Req'd	Description
1	37131	1	High Pressure Pump Ass'y (See sheet 3 of 3)
2	12577	4	Cap Screw (Torque to 90/100 in. lbs.)
3	21278	1	Relief Valve (Set at 10,100/10,700 PSI)
4	13229	1	90° Elbow Fitting
5	29682	1	Filter
6	36415	1	Tube
7	10475	1	90° Connector
8	10016	4	Cap Screw (Torque to 90/100 in. lbs.)
9	20937	1	Vented Filler Cap
10	10020	4	Cap Screw (Torque to 110/120 in. lbs.)

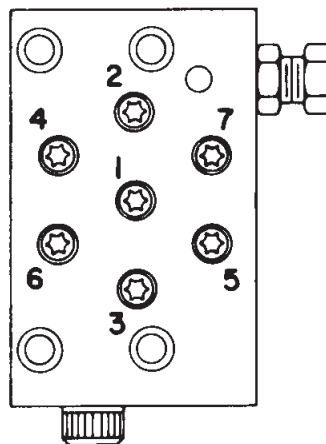
HIGH PRESSURE PUMP ASSEMBLY



Item No.	Part No.	No. Req'd	Description
1	16747*	7	Cap Screw (See diagram below)
2	36912*	1	Pump End Plate
3	24549*	6	Valve Guide
4	10445*	6	Comp. Spring
5	12223*	6	Steel Ball
6	20775*	3	Piston
7	40629*	1	Pump Barrel
8	40630*	1	Valve Head
9	200797	1	Adjusting Screw
10	10386	1	Jam Nut
11	15691	1	Comp. Spring
12	200796	1	Spring & Ball Adapter
13	10375	2	Steel Ball
14	201998	1	Sleeve
15	12571	1	Roll Pin
16	14431	1	Comp. Spring
17	12042	1	Copper Washer
18	29690	1	Cap Screw (Torque to 180 in. lbs.)
19	10427	1	Pipe Plug

Consult factory when replacing items marked with an asterisk (*).

BOLT TIGHTENING SEQUENCE



**NOTE: Assemble in sequence shown.
Lubricate under head and on threads
Torque to 170 in. lbs.**