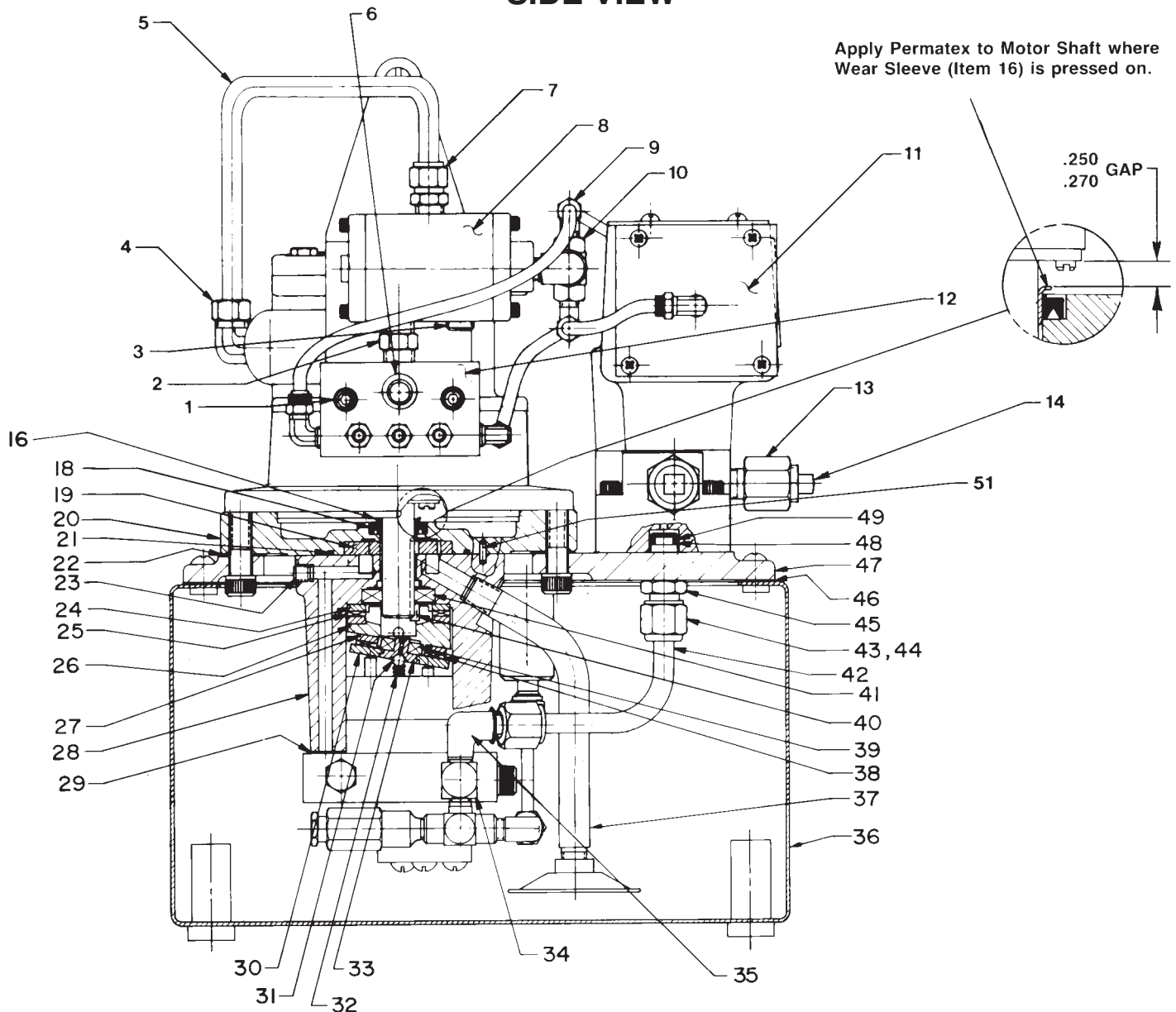


AIR HYDRAULIC PUMP SIDE VIEW

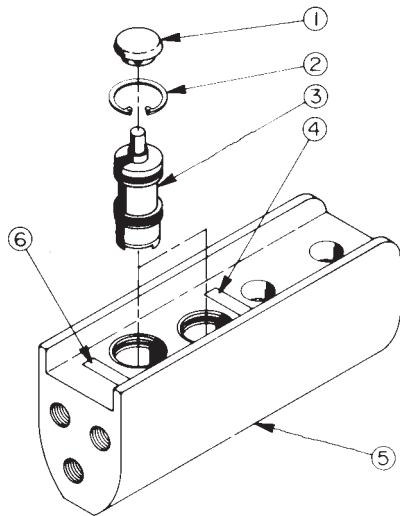


Parts List, Form No. 100686, Back sheet 1 of 4

Item No.	Part No.	No. Req'd	Description
1	10022	2	Cap Screw (1/4-20 UNC X 1-1/2 Lg.)
2	16494	1	Straight Fitting
3	10479	1	Pipe Plug (1/4 NPTF)
4	17636	1	90° Elbow
5	212749	1	Copper Tubing
6	14794	1	Plastic Cap
7	17634	1	Straight Fitting
8	212404	1	Air Operated Valve
9	15378	2	Tee
10	212405	1	Shuttle Valve
11	61086	1	Valve Ass'y (See Form #100542)
12	37593	1	Air Valve Manifold
13	13888	2	Straight Fitting
14	11036	2	Pipe Plug
16	15696	1	Wear Sleeve
18	15694	1	Shaft Seal
19	15693	1	Gerotor Set
20	50751	1	Pump Housing
21	15690	1	O-ring (2-5/8 x 2-1/2 x 1/16, -037)
22	35541	1	Gasket
23	11084	1	Pipe Plug (1/16 NPTF; Torque to 35/45 in. lb. oiled)
24	11227	2	Bearing Race
25	11228	1	Thrust Bearing
26	35271	1	Angle Plate
27	15432	1	Needle Thrust Bearing
28	50752	1	Pump Housing
29	27776	1	Gasket
30	23548	1	Top Plate
31	10375	1	Steel Ball (7/32 Dia.)
32	10361	1	Compression Spring (1/4 O.D. X 1" Lg.)
33	23547	1	Top Plate Bearing
34	14538	1	Tee Fitting
35	10475	1	90° Elbow
36	40063-OR9	1	Reservoir
37	200799	1	Intake Tube
38	15431	1	Needle Thrust Bearing
39	11814	1	Ball Bearing
40	200798	1	Key
41	15695	1	Radial Ball Bearing
42	213342	1	High Pressure Oil Line
43	10430	1	Tube Sleeve
44	10431	1	Tube Nut
45	20787	1	Valve Connector
46	40164	1	Cover Plate Gasket
47	50851	1	Cover Plate
48	11863	1	Backup Washer (1/2 X 3/8 X 1/16, -012)
49	10268	1	O-Ring (1/2 X 3/8 X 1/16, -012)
50	10808	1	Dowel Pin

PARTS INCLUDED BUT NOT SHOWN

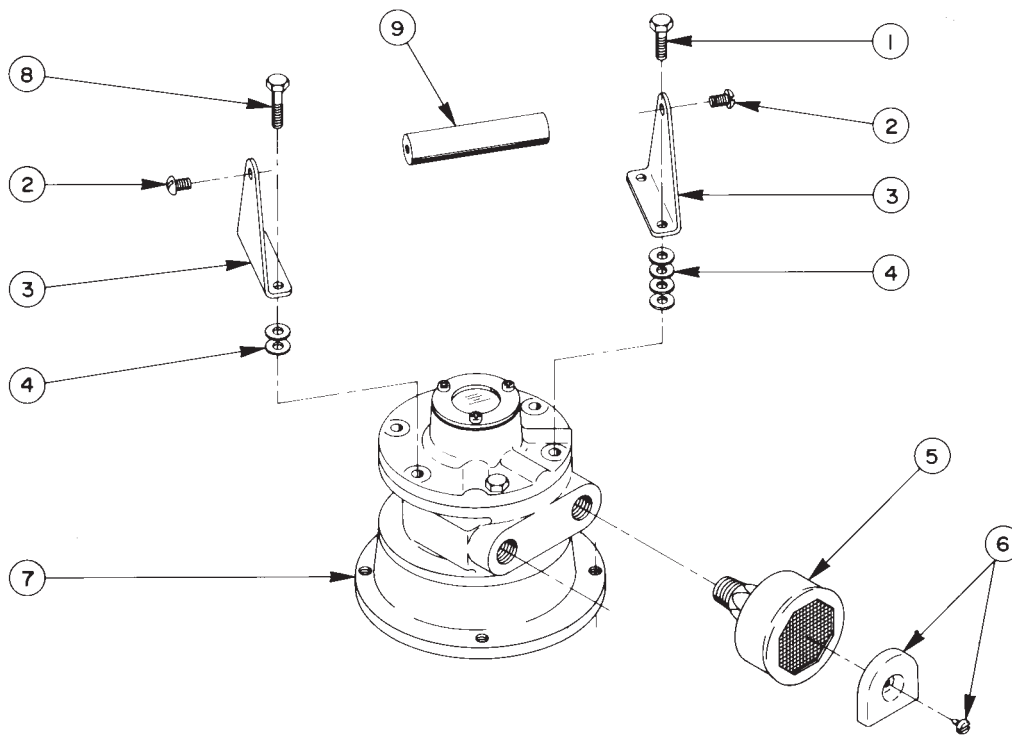
307256	2	Trade Name Decal
--------	---	------------------



HAND CONTROL ASSEMBLY

Item No.	Part No.	No. Req'd	Description
1	206105	2	Push Button
2	11033	2	Retaining Ring
3	206104	2	Valve Cartridge (Including seats)
4	29664	1	Decal (Retract)
5	44024	1	Control Valve Body
6	29663	1	Decal (Advance)

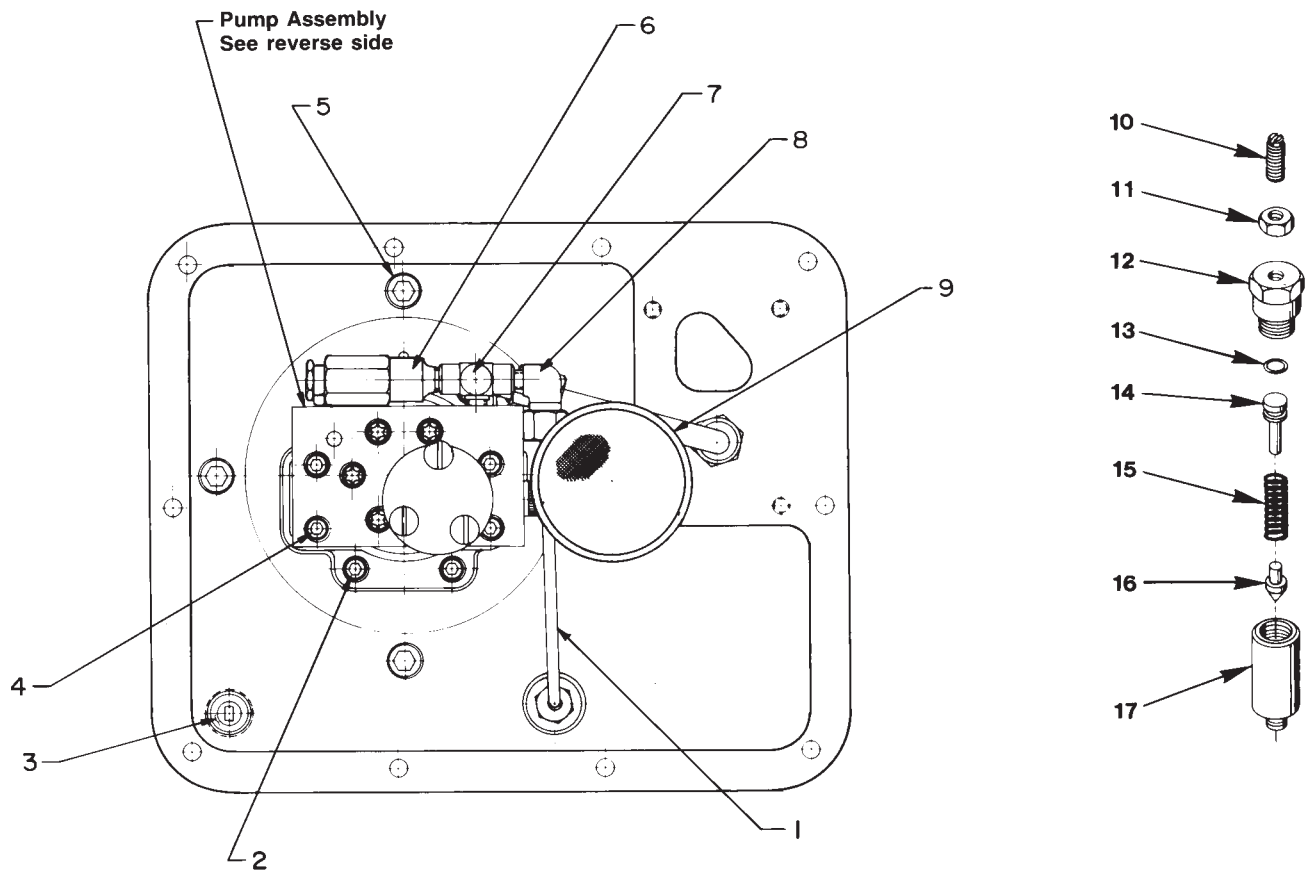
AIR MOTOR ASSEMBLY



Item No.	Part No.	No. Req'd	Description
1	10014	1	Cap Screw (1/4-28 UNF X 1" Lg.)
2	10174	2	Machine Screw (1/4-20 UNC X 1/2 Lg.)
3	33808	2	Handle Bracket
4	12719	12	Washer (For 1/4 Bolt)

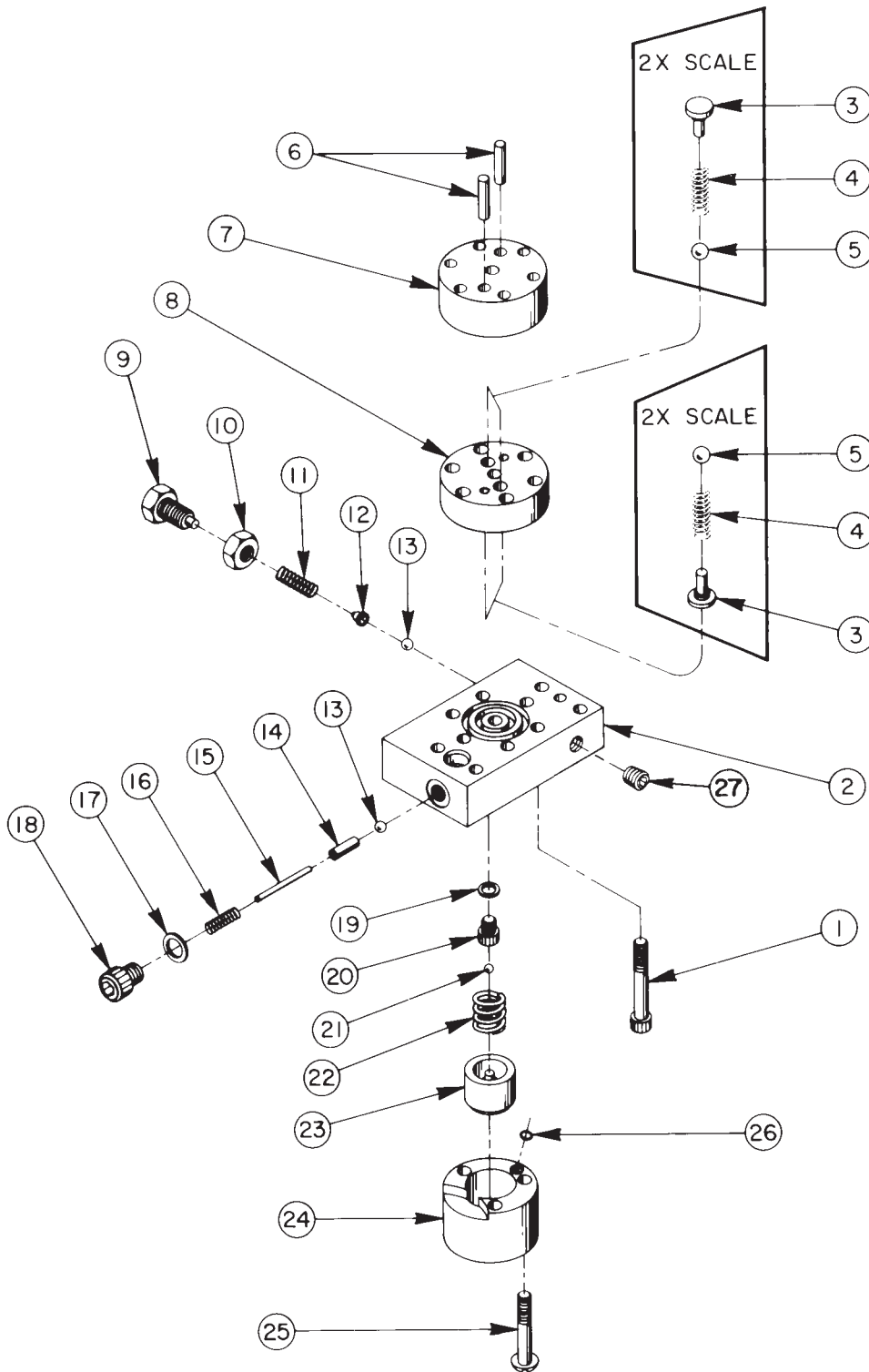
Item No.	Part No.	No. Req'd	Description
5	13966	1	Muffer
6	205505	1	Deflector
7	14717	1	Air Motor
8	10018	3	Cap Screw (1/4-28 UNF X 1-1/4 Lg.)
9	28158	1	Handle

BOTTOM VIEW & PRESSURE REGULATOR ASSEMBLY



Item No.	Part No.	No. Req'd	Description
1	213340	1	Pressure Regulator Line
2	10016	4	Cap Screw (1/4-20 UNC X 1" Lg.; Torque to 90/100 in. lbs.)
3	20937	1	Vented Filler Cap
4	10020	4	Cap Screw (1/4-20 UNC X 1-1/4 Lg.; Torque to 100/120 in. lbs.)
5	12577	4	Cap Screw (3/8-16 UNC x 1-3/4 Lg.; Torque to 90/100 in. lbs.)
6	21278	1	Relief Valve (Set at 10,100/10,700 PSI)
7	14538	1	Tee Fitting
8	11278	1	Fitting
9	29682	1	Strainer
10	22362	1	Adjusting Screw
11	10386	1	Hex Jam Nut
12	21305	1	Valve Cap
13	10268	1	O-ring (1/2 X 3/8 X 1/16, -012)
14	21306	1	Spring Guide
15	10495	1	Compression Spring (1/2 O.D. X 1-5/8 Lg.)
16	21046	1	Valve Stem
17	22361	1	Body

H. P. PUMP ASSEMBLY W / AUTO VALVE

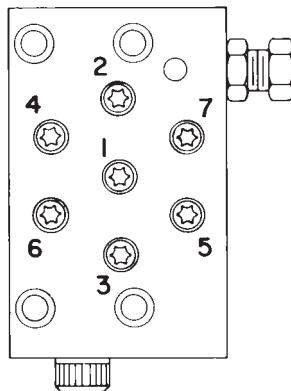


SEE DIAGRAM
ON REVERSE
SIDE FOR
IMPORTANT ASS'Y.
INFORMATION

Item No.	Part No.	No. Req'd	Description
1	*16747	7	Torx Drive Screw (See diagram below)
2	*36911	1	Pump End Plate
3	*24549	4	Valve Guide
4	*10445	4	Compression Spring (5/32 O.D. X 3/4 Lg.)
5	*12223	4	Steel Ball (3/16 Dia.)
6	*20775	2	Piston
7	*41006	1	Pump Barrel
8	*41007	1	Valve Head
9	200797	1	Adjusting Screw
10	10386	1	Jam Nut
11	15691	1	Compression Spring (1/4 O.D. X 5/8 Lg.)
12	200796	1	Spring & Ball Adapter
13	10375	2	Steel Ball (1/4 Dia.)
14	201998	1	Sleeve
15	12571	1	Roll Pin
16	15129	1	Compression Spring (3/16 O.D. X 7/8 Lg.)
17	12042	1	Copper Washer (9/16 X 3/8 X 1/32)
18	29690	1	Cap Screw (Torque to 180 in. lbs.)
19	10442	1	Copper Washer (3/8 X 1/4 X 1/32)
20	201995	1	Cap Screw (Torque to 80/90 in. lbs.)
21	10419	1	Steel Ball (5/32 Dia.)
22	16465	1	Compression spring (5/8 O.D. X 3/4 Lg.)
23	202088	1	Piston
24	32077	1	Valve Cylinder
25	10614	3	Rd. Hd. Machine Screw (1/4-20 UNC X 1 1/2 Lg.)
26	10264	1	O-ring (1/4 X 1/8 X 1/16, -006)
27	10427	1	Pipe Plug

Consult factory when replacing items marked with an asterisk (*).

BOLT TIGHTENING SEQUENCE



**NOTE: Assemble in sequence shown.
Lubricate under head and on threads.
Torque to 170 in. lbs.**