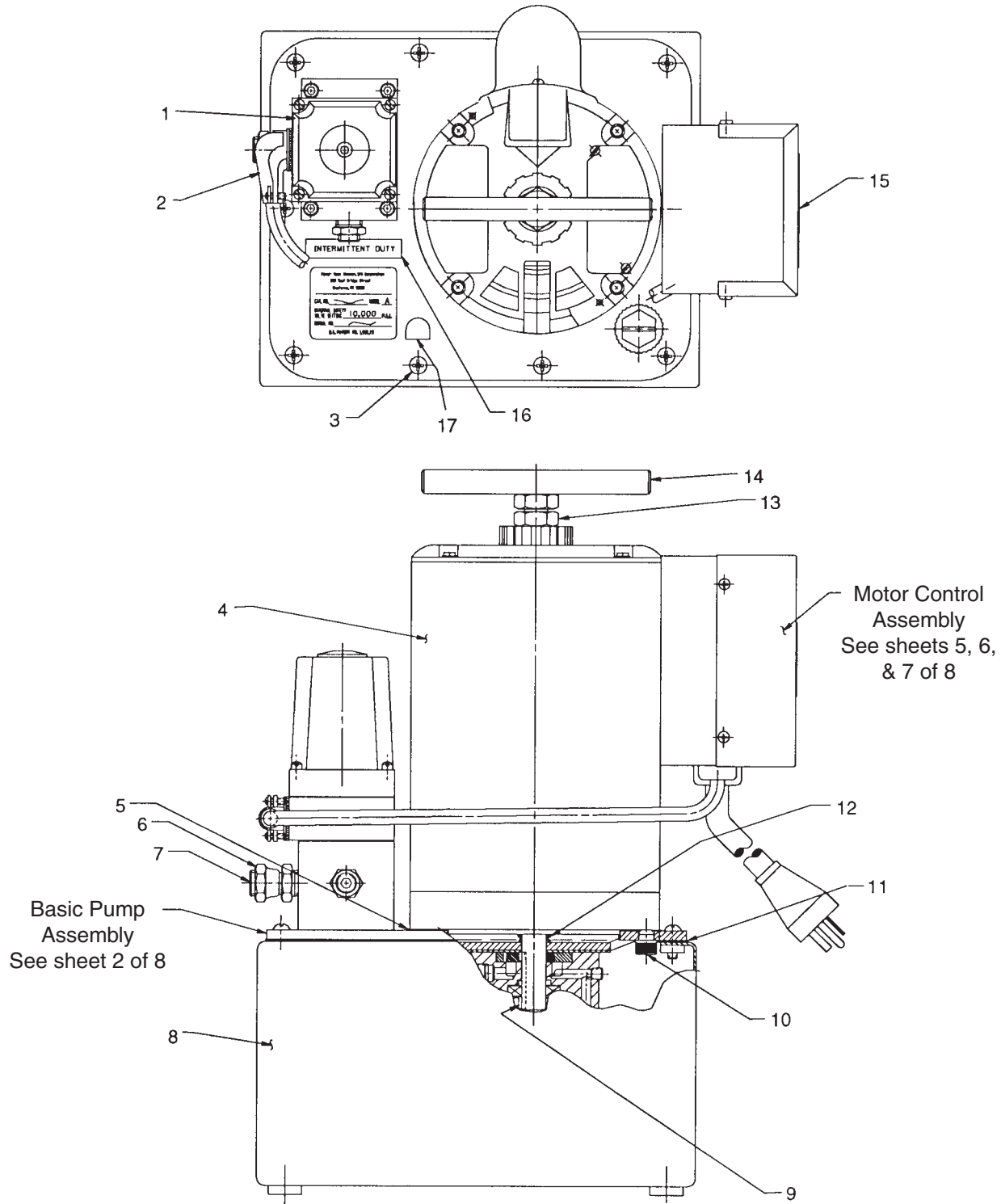


Parts List for:

- 61660
- 61660-15
- 61660-50-220
- 61698
- 65596-CAR

**ELECTRIC HYDRAULIC PUMP**

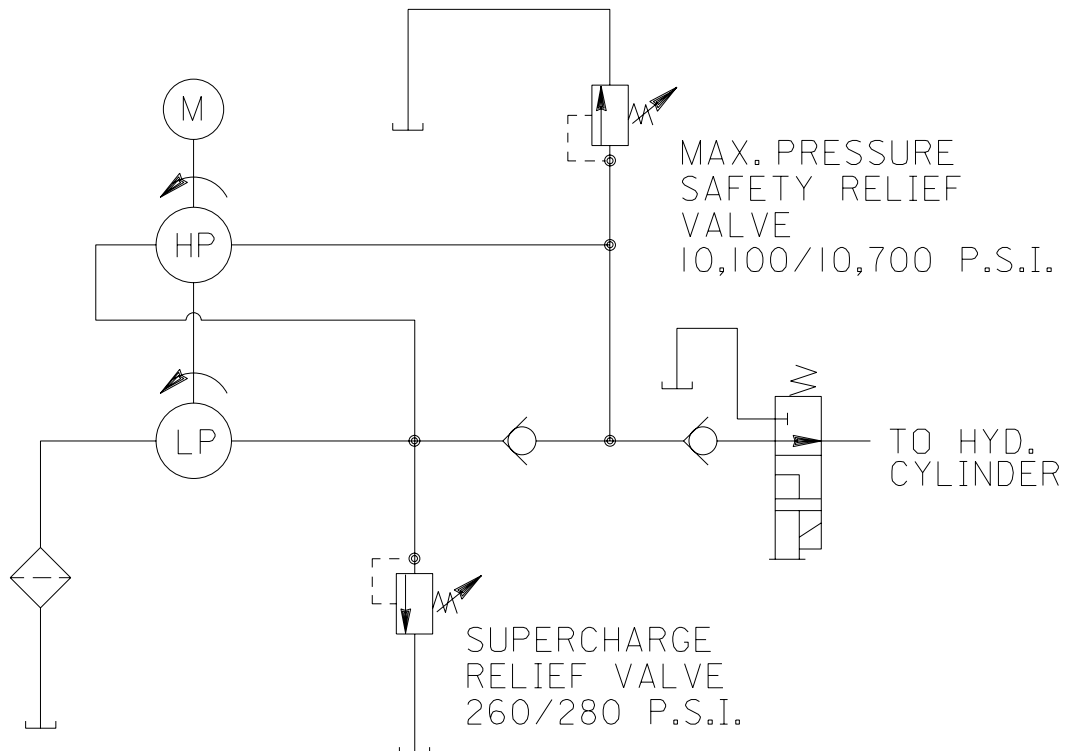


Item No.	Part No.	No. Req'd	Description
1	42621	1	Valve Ass'y (see Form #100445)
2	11144	1	90° Connector
3	10177	10	Machine Screw (1/4-20 UNC X 3/4 lg.)
4	58083	1	Electric Motor (115/230 V., 60Hz.; for 61660, 61660-15, 61698 & 65596-CAR)
	53106	1	Electric Motor (110/220 V., 50 Hz.; for 61660-50-220)
5	307425	1	Motor Base Gasket
6	10469	1	Adapter Fitting
7	16232	1	Pipe Plug (3/8 NPTF)
8	40063BK2	1	Reservoir
9	214097	1	Key
10	10050	4	Cap Screw (3/8-16 X 1" lg.; Torque to 90/100 in. lbs.)
11	40164	1	Gasket
12	213674	1	Shaft Seal
13	10394	1	Nut (5/8-18 UNF)
14	203146	1	T-Handle
15	200188	1	Warning Decal
16	213695	1	Decal (For 61660 only)
17	250209	1	Decal (Made in USA)

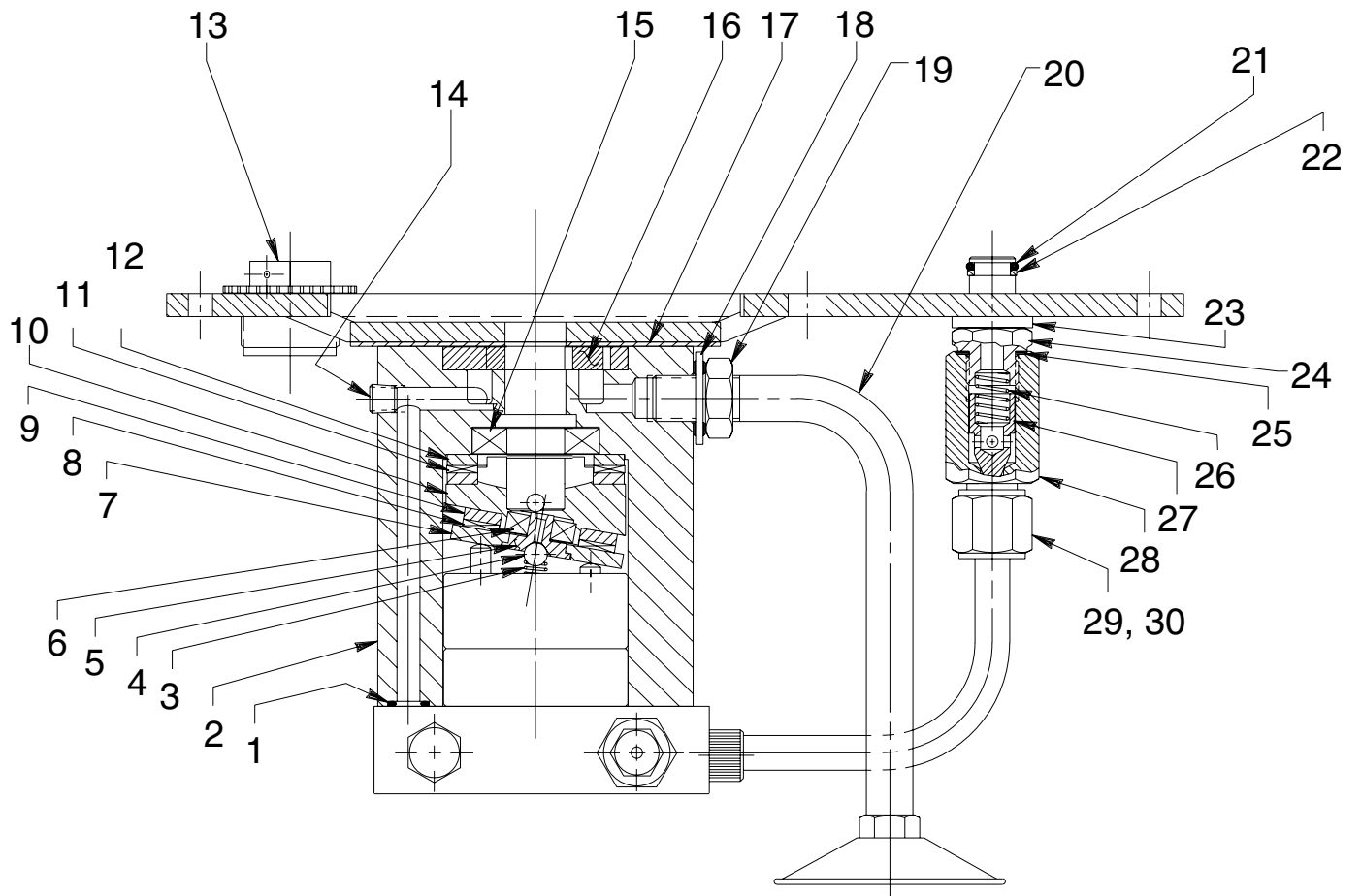
**PARTS INCLUDED BUT NOT SHOWN**

203972	1	Decal (CSA approval)
351215-CA	1	Remote Control Hand Switch Assembly (For 65596-CAR, See sheet 8 of 8.)

**HYDRAULIC SCHEMATIC**



### BASIC PUMP ASSEMBLY SIDE SECTION VIEW



## Parts List, Form No. 100688, Back sheet 2 of 8

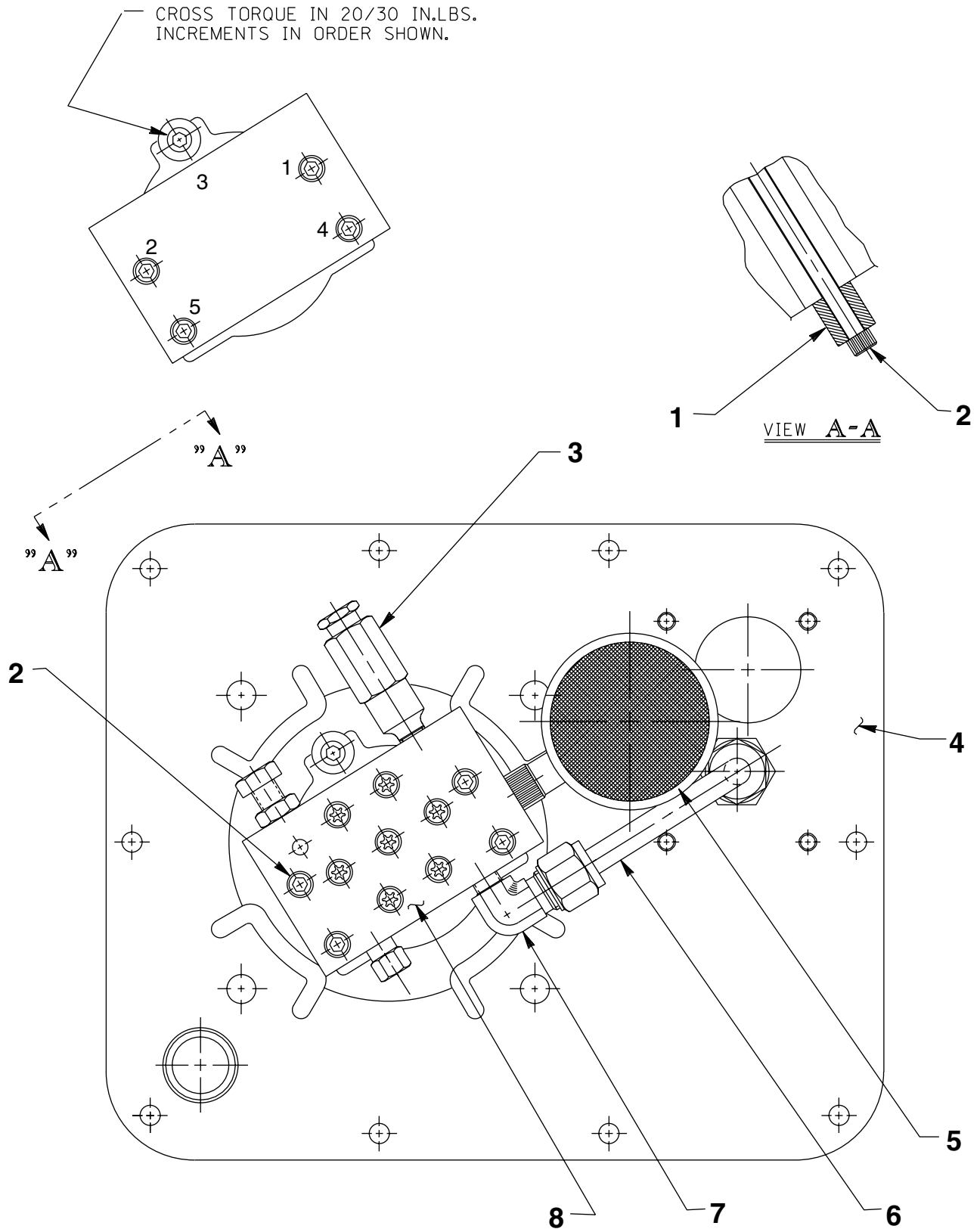
Item No.	Part No.	No. Req'd	Description
1	10267	1	O-ring (7/16 X 5/16 X 1/16)
2	52883	1	Pump Body
3	16320	1	Compression Spring (1/4 O.D. X 3/4 lg.)
4	10375	1	Steel Ball (1/4 dia.)
5	23547	1	Top Plate Bearing
6	11814	1	Ball Bearing
7	23548	1	Top Plate
8	15431	1	Needle Thrust Bearing
9	15432	1	Needle Thrust Bearing Race
10	35271	1	Angle Plate
11	11228	1	Needle Thrust Bearing
12	11227	2	Needle Thrust Baring Race
13	213706	1	Filler Cap
14	11084	1	Pipe Plug (1/16 NPTF; Torque to 35/45 in. lbs. oiled)
15	15695	1	Ball Bearing
16	15693	1	Gerotor Set
17	307296	1	Wear Plate
18	213709	1	Washer Seal
19	10390	1	Nut (1/2-20 UNF)
20	213686	1	Intake Tube
21	10268	1	O-ring (1/2 X 3/8 X 1/16)
22	11863	1	Backup Washer (1/2 X 3/8 X 1/16)
23	21484	1	Washer
24	214762	1	Valve Connector (Torque to 40/50 ft. lbs.)
25	10261	1	Copper Washer (3/4 X 19/32 X 1/32)
26	10425	1	Compression Spring (3/8 O.D. X 3/4 lg.)
27	20771	1	Poppet
28	201879	1	Check Valve Body
29	10430	1	Tube Sleeve
30	10431	1	Tube Nut

Refer to any operating instructions included with this product for detailed information about operation, testing, disassembly, reassembly, and preventive maintenance.

Items found in this parts list have been carefully tested and selected. **Therefore: Use only genuine Power Team replacement parts!**

Additional questions can be directed to our Technical Services Department.

# BASIC PUMP ASSEMBLY BOTTOM VIEW

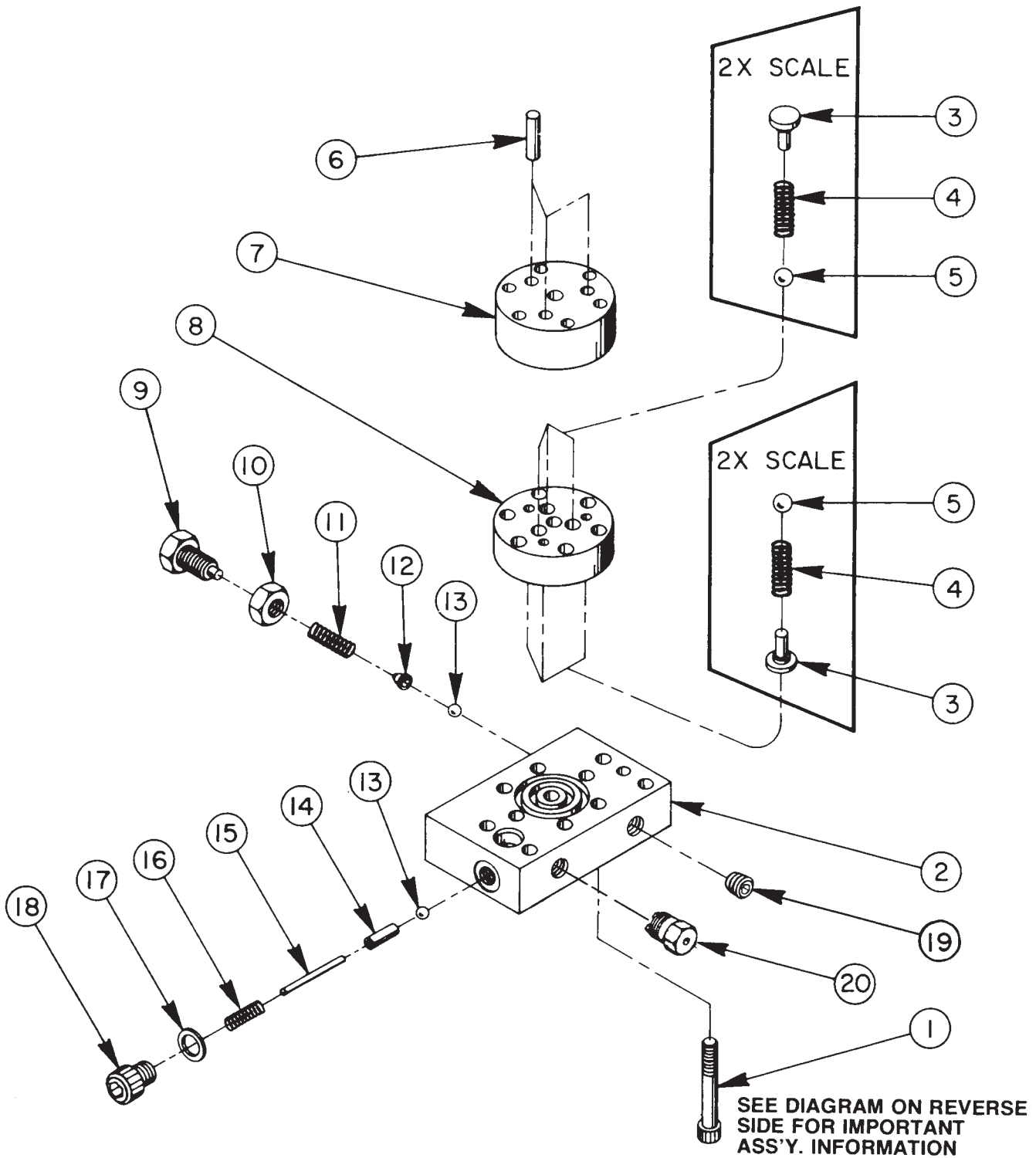


## Parts List, Form No. 100688, Back sheet 3 of 8

---

Item No.	Part No.	No. Req'd	Description
1	214720	1	Spacer
2	15642	5	Cap Screw (Torque to 55/65 in. lbs.)
3	21278	1	Relief Valve (Set at 10,100/10,700 PSI)
4	61566BK2	1	Cover
5	29682	1	Filter
6	307459	1	Oil Line
7	10475	1	Connector
8	37131	1	High Pressure Pump Ass'y (see Sheet 4 of 8)

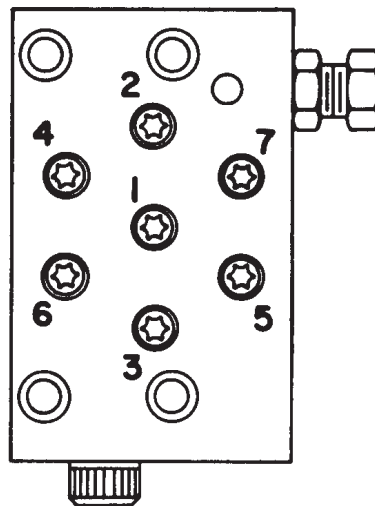
# HIGH PRESSURE PUMP ASSEMBLY



Item No.	Part No.	No. Req'd	Description
1	*16747	7	Torx Drive Cap Screw (1/4-28 UNF X 1-3/4 lg.; See diagram below)
2	*36912	1	Pump End Plate
3	*24549	6	Valve Guide
4	*10445	6	Compression Spring (5/32 O.D. X 3/4 lg.)
5	*12223	6	Steel Ball (3/16 dia.)
6	*20775	3	Piston
7	*40629	1	Pump Barrel
8	*40630	1	Valve Head
9	200797	1	Adjusting Screw
10	10386	1	Jam Nut (3/8-24 UNF)
11	15691	1	Compression Spring (1/4 O.D. X 5/8 lg.)
12	200796	1	Spring & Ball Adapter
13	10375	2	Steel Ball (1/4 dia.)
14	201998	1	Sleeve
15	12571	1	Roll Pin (1/8 dia. X 1-3/8 lg.)
16	14431	1	Compression Spring (3/16 O.D. x 3/4 lg.)
17	12042	1	Copper Washer (9/16 X 3/8 X 1/32)
18	29690	1	Cap Screw (Torque to 180 in. lbs.)
19	10427	1	Pipe Plug (1/8 NPTF)
20	306957	1	Air Bleed Valve

Consult factory when replacing items marked with an asterisk (\*).

### BOLT TIGHTENING SEQUENCE

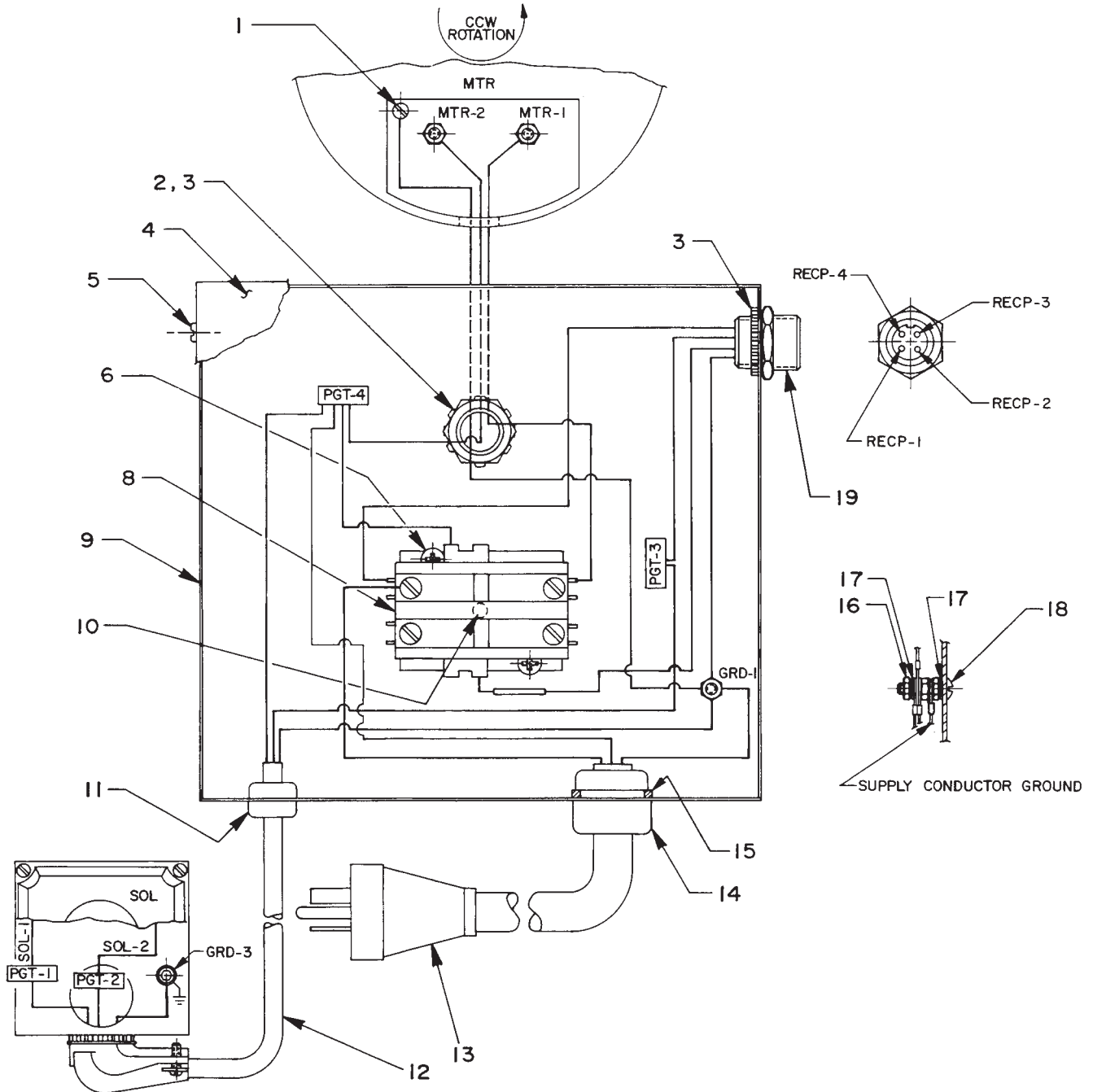


**IMPORTANT:** To help prevent equipment damage, the Torx drive cap screws (Item #1) must be assembled in the sequence shown. Lubricate under the head and on the threads. Torque to 170 in. lbs.

# ELECTRIC CONTROL ASS'Y

115/230 V., 60Hz.

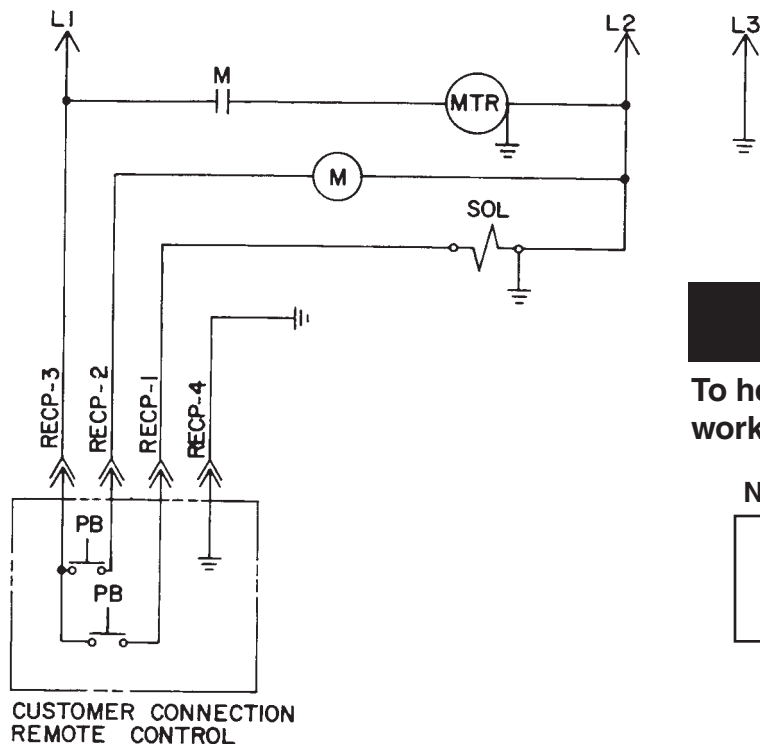
(For 61660, 61660-15 & 61698)



Item No.	Part No.	No. Req'd	Description
1	15468	1	Self-tapping Screw (#6-32 X 3/8 lg.)
2	11202	1	Conduit Connector
3	11362	2	Conduit Lockwasher
4	42576GY5	1	Control Box Cover
5	11141	4	Screw (#6-20 X 3/8 lg.)
6	11539	2	Screw (10-24 UNC X 1/4 lg.)
8	420718-1	1	Contactor
9	45013GY5	1	Control Box
10	13897	1	Screw (8-18 X 3/8 lg.)
11	210112	1	Strain Relief Bushing
12	11911	2.5 ft.	Electrical Cable (16/3 SJTO)
13	208163	1	Power Cord (12/3 SO; for 61660)
	214833	1	Power Cord (12/3 SO; for 61660-15)
14	11431	1	Strain Relief Bushing
15	23506	1	Spacer
16	10197	3	Nut (#10-24 UNC)
17	11108	2	Lockwasher (#10 external tooth)
18	10167	1	Machine Screw (10-24 UNC X 3/4 lg.)
19	45040	1	Wire Harness

Note: Shaded areas reflect last revision(s) made to this form.

### ELECTRICAL SCHEMATIC FOR 61660-15 & 61698 115/230 Volt, 60 Hz., Single Phase



**! WARNING**

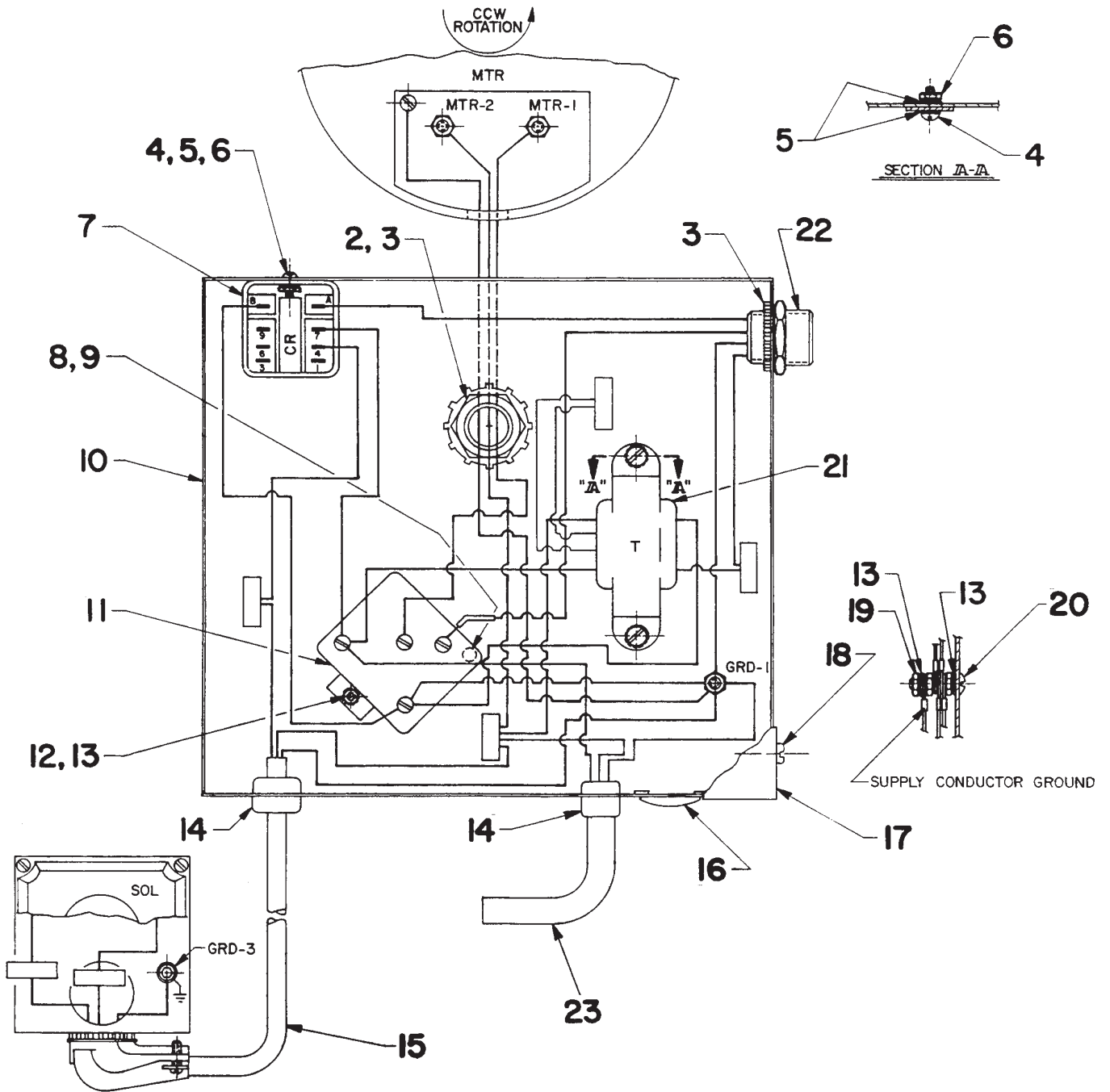
To help avoid personal injury, all electrical work must be done by a qualified electrician.

#### North American & International Color Codes

Conductors	North American	International
Line .....	Black.....	Brown
Neutral .....	White .....	Blue
Ground .....	Green .....	Green/Yellow

# ELECTRIC CONTROL ASS'Y

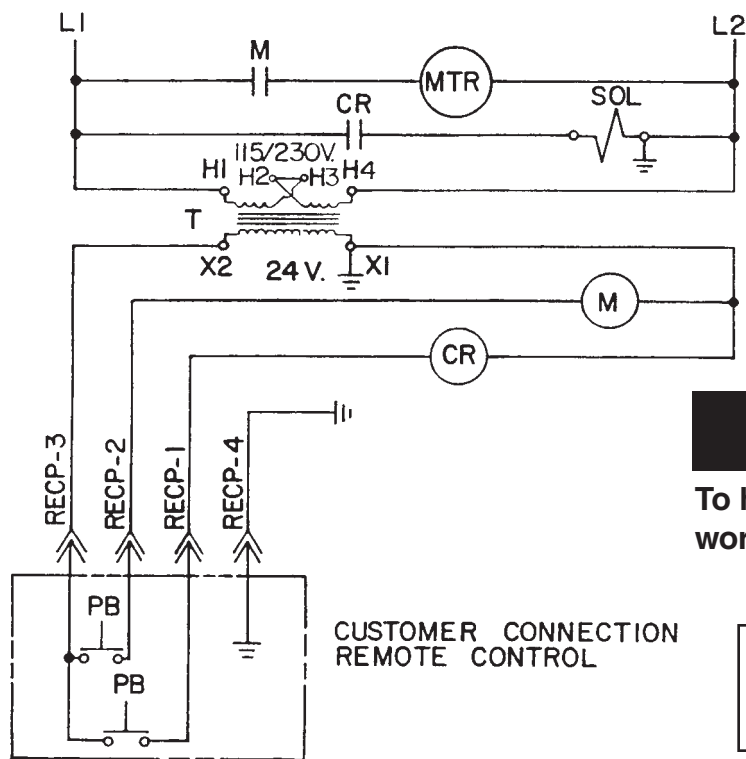
110/220 V., 50 Hz.  
(For 61660-50-220)



Item No.	Part No.	No. Req'd	Description	Item No.	Part No.	No. Req'd	Description
2	11202	1	Conduit Connector	13	11108	3	Lockwasher (#10)
3	11362	2	Conduit Lockwasher	14	210112	2	Strain Relief Bushing
4	10159	4	Machine Screw (#6-32 X 5/16 Lg.)	15	11911	2.5 ft.	Electrical Cable (16/3 SO)
5	15906	6	Washer (#6 shakeproof)	16	12370	1	Plug Button
6	10195	4	Hex Nut (#6-32)	17	42576GY5	1	Control Box Cover
7	39092	1	Relay	18	11141	4	Self-tapping Screw (#6 X 3/8 Lg.)
8	12355	1	Washer (#8)	19	10197	3	Hex Nut (#10-24)
9	252253	1	Tapping Screw (#8-32 UNF X 1/2 Lg.)	20	10167	1	Machine Screw (#10-24 X 3/4 Lg.)
10	45013GY5	1	Control Box Body	21	305665	1	Transformer
11	14667	1	Starter Relay	22	45040	1	Wire Harness
12	16613	1	Machine Screw (#10-24 X 5/16 Lg.)	23	308752	20 ft.	Electrical Cable (14/3 SJTO)

### ELECTRICAL SCHEMATIC FOR 61660-50-220

110/220 Volt, 50 Hz., Single Phase



**! WARNING**

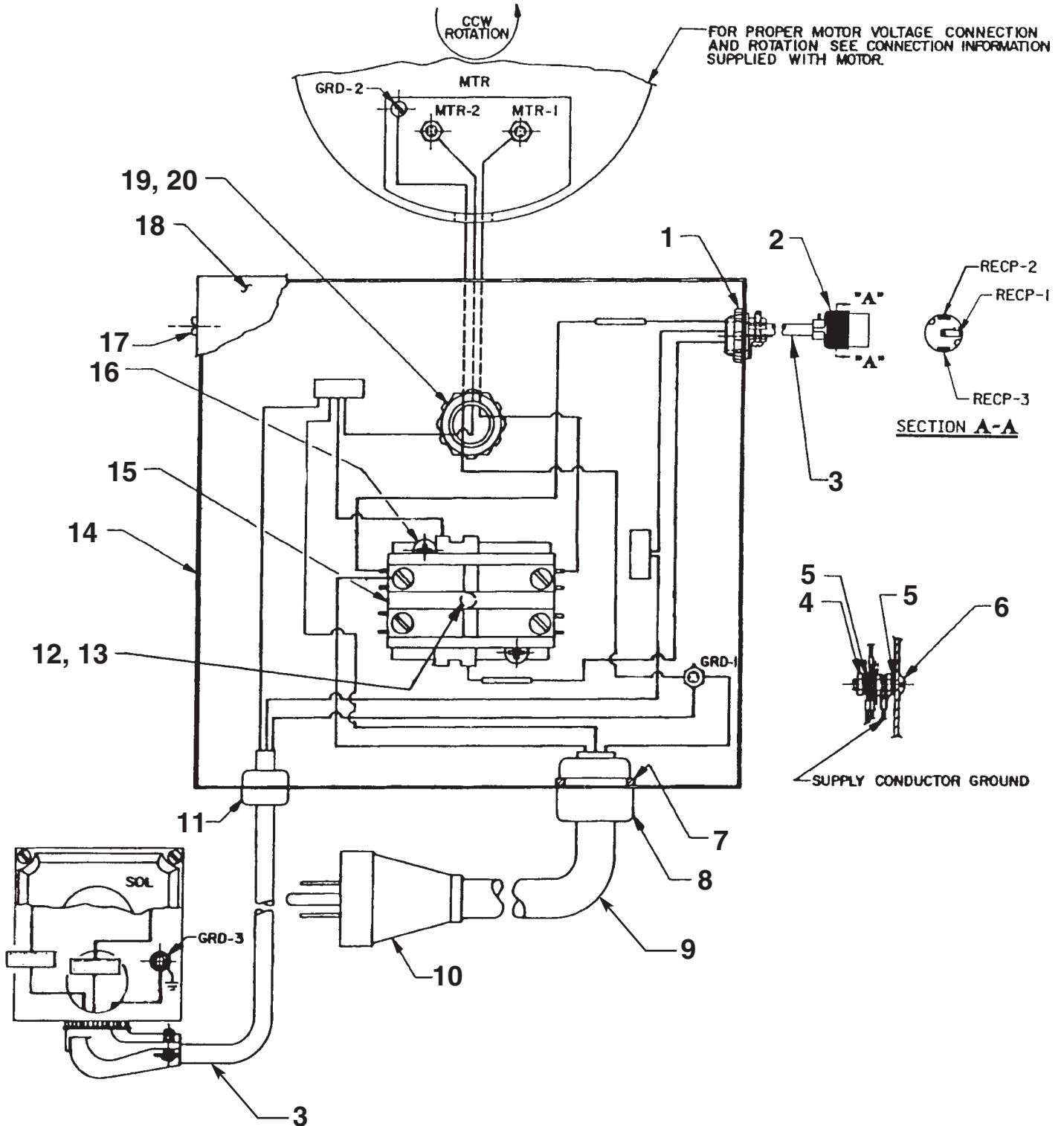
To help avoid personal injury, all electrical work must be done by a qualified electrician.

**North American & International Color Codes**

Conductors	North American	International
Line .....	Black.....	Brown
Neutral .....	White .....	Blue
Ground .....	Green .....	Green/Yellow

# ELECTRIC CONTROL ASSEMBLY

115 V., 60 Hz.  
(For 65596-CAR)



Item No.	Part No.	No. Req'd	Description
1	11203	1	Conduit Connector
2	250895	1	Electrical Plug
3	11911	3.3 ft.	Electrical Cable (16/3 SO)
4	10197	3	Hex Nut (10-24)
5	11108	2	Washer
6	10167	1	Screw (10-24 X 3/4 Lg.)
7	23506	1	Spacer
8	11431	1	Strain Relief Bushing
9	11859	21 ft.	Electrical Cable (12/3 STO)
10	16896	1	Electrical Plug
11	210112	1	Strain Relief Bushing
12	252253	1	Screw (8-32 X 3/8 Lg.)
13	12355	1	Washer
14	45013GY5	1	Electrical Control Box
15	420718-1	1	Contactor
16	11539	2	Screw (10-24 X 1/4 Lg.)
17	11141	4	Screw (6-20 X 3/8 Lg.)
18	42576GY5	1	Control Box Cover
19	11202	1	Nipple
20	11362	1	Conduit Locknut

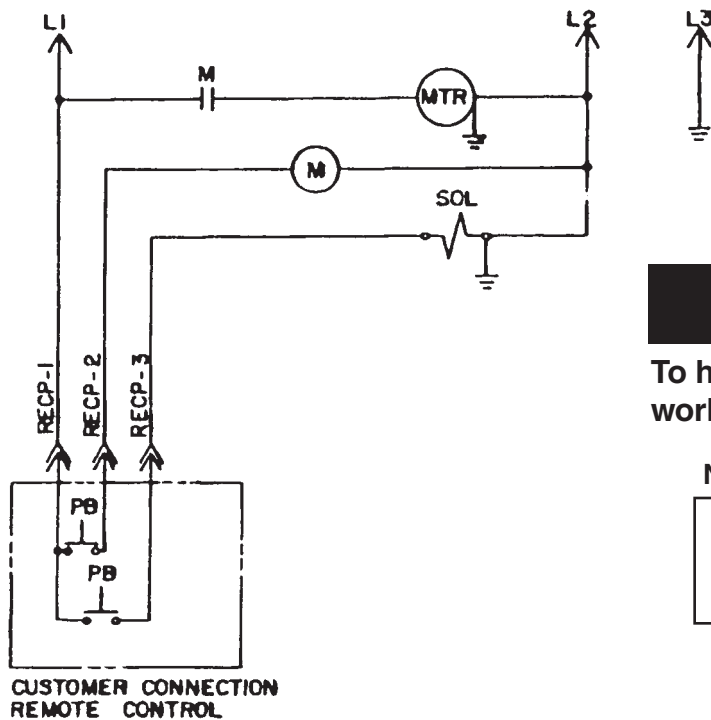
**PARTS INCLUDED BUT NOT SHOWN**

200188 1 Warning Decal

Note: Shaded areas reflect last revision(s) made to this form.

## ELECTRICAL SCHEMATIC FOR 65596-CAR

115 Volt, 60 Hz., Single Phase



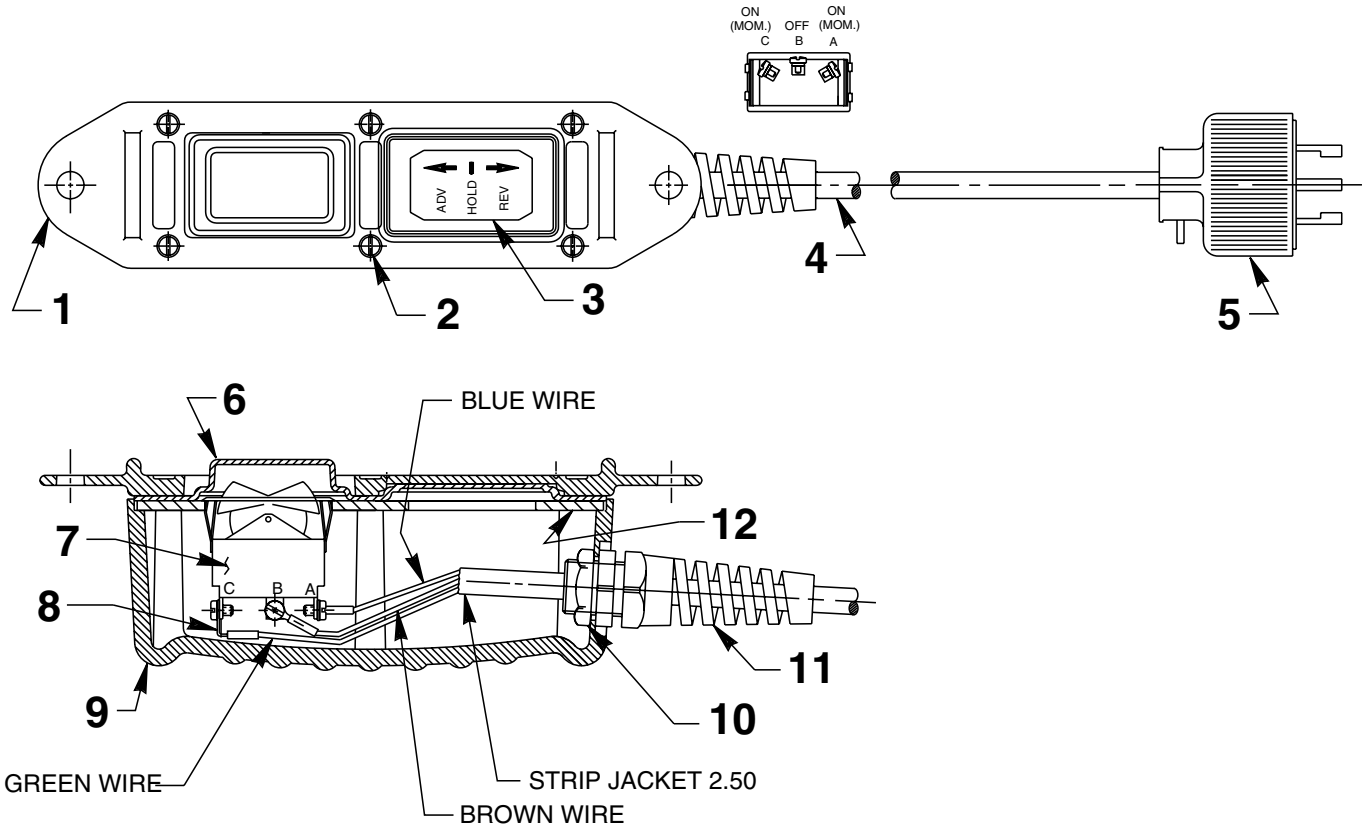
**! WARNING**

To help avoid personal injury, all electrical work must be done by a qualified electrician.

**North American & International Color Codes**

Conductors	North American	International
Line .....	Black .....	Brown
Neutral .....	White .....	Blue
Ground .....	Green .....	Green/Yellow

## REMOTE CONTROL HAND SWITCH ASSEMBLY (For 65596-CAR)



Item No.	Part No.	No. Req'd	Description
1	420050-1	1	Cover
2	250248	6	Screw (4-24 x 3/4 Lg.)
3	202776	1	Decal
4	12293	21 ft.	Electrical Cable (16/3 SJTO)
5	250894	1	Electrical Plug
6	420050-2	1	Gasket
7	16773	1	Rocker Switch
8	12311	3	Ring Tongue Terminal
9	420050-4	1	Switch Housing
10	251802	1	Locknut
11	251818	1	Strain Relief Connector
12	420050-3	1	Switch Mounting Plate