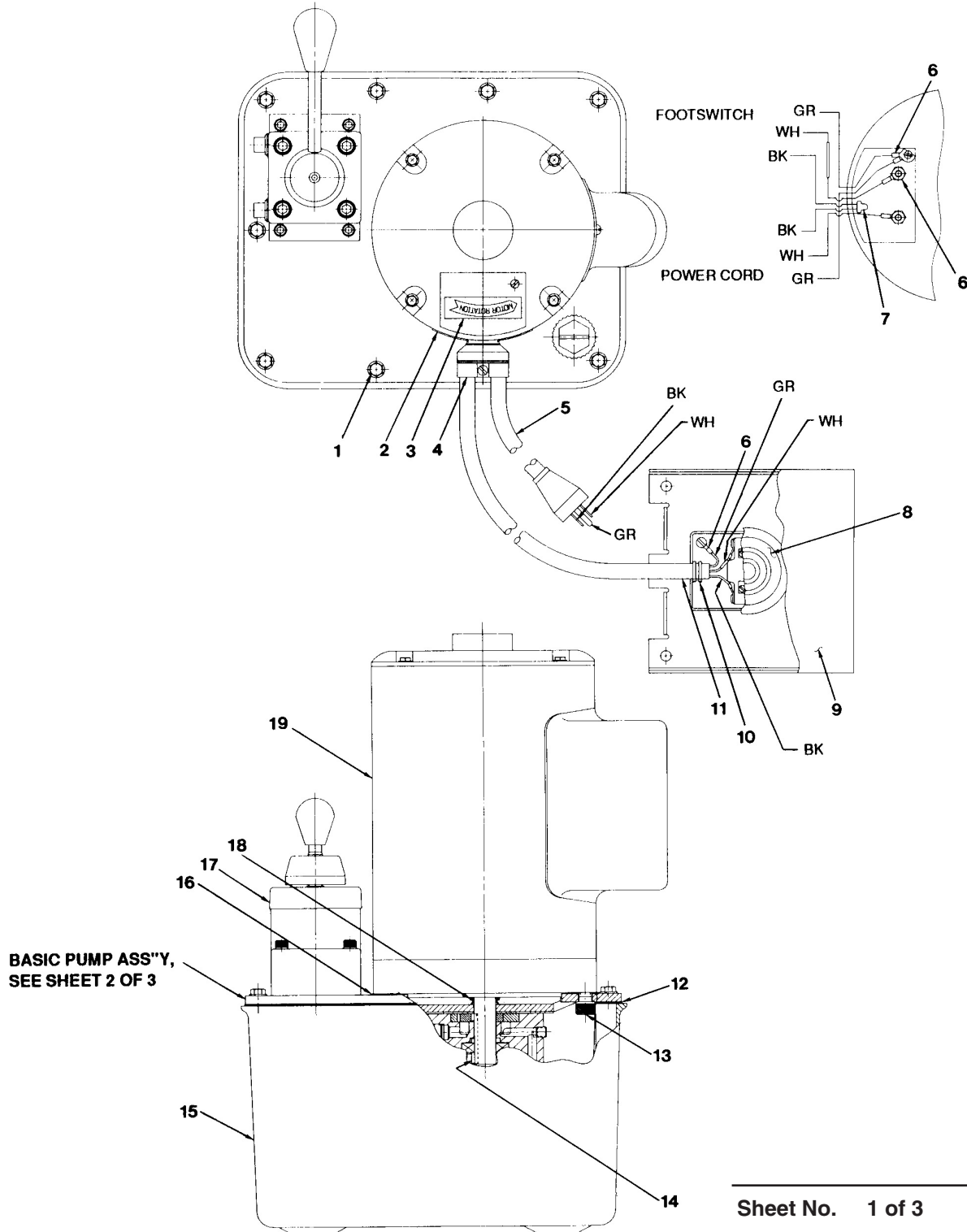


## ELECTRIC HYDRAULIC PUMP

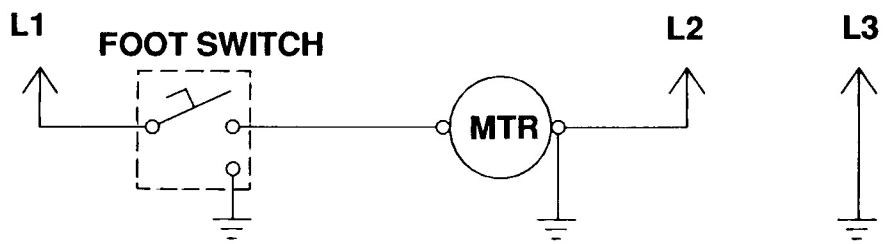


BASIC PUMP ASS'Y,  
 SEE SHEET 2 OF 3

Item No.	Part No.	No. Req'd	Description
1	209799	14	Washer Head Screw
2	200188	1	Caution Decal
3	202504	1	Motor Rotation Decal
4	17866	1	Duplex Connector
5	307440	1	Cord Set
6	19736	5	Ring Tongue Terminal
7	11296	1	Crimp Type Connector
8	213710	1	Foot Switch
9	16339	1	Foot Switch Guard
10	12313	2	Cable Tie
11	307439	8ft.	Wire Cable
12	40164	1	Gasket
13	10050	4	Cap Screw (3/8-16 X 1" Lg.; Torque to 90/100 in. lbs.)
14	214097	1	Key
15	61165	1	Reservoir
16	307425	1	Motor Base Gasket
17	9500	1	Valve Ass'y (See Form 100623)
18	213674	1	Shaft Seal
19	58083	1	Electric Motor (1 H.P.)

### ELECTRICAL SCHEMATIC

115 V., 60 Hz., Single Phase



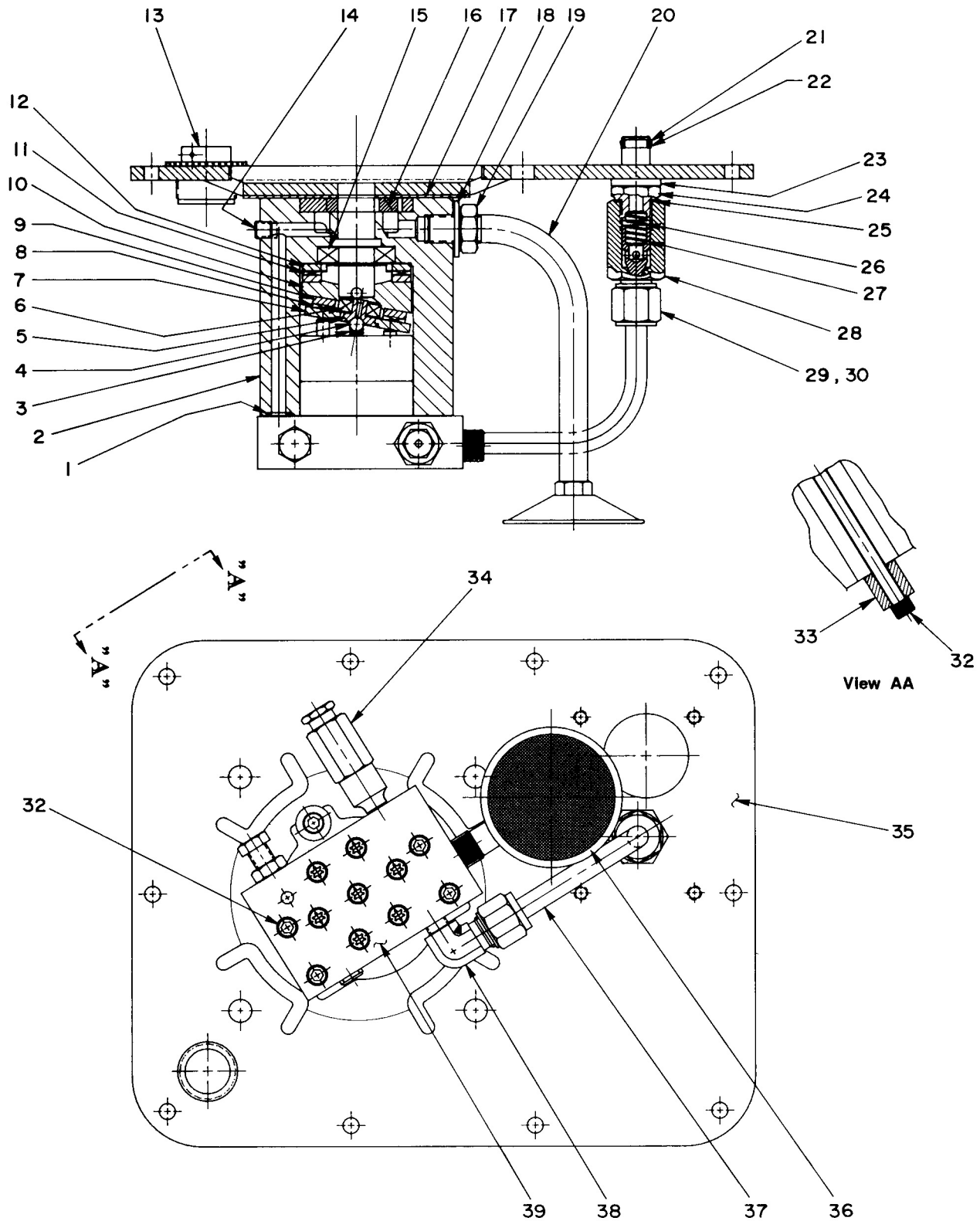
**NOTE:** For proper voltage connection, see electrical decal on motor. All voltages must be wired for counterclockwise rotation viewed from lead end of motor.

#### North American & International Color Codes:

Conductors	North American	International
Line . . . . .	Black . . . . .	Brown
Neutral . . . . .	White . . . . .	Blue
Ground . . . . .	Green . . . . .	Green/Yellow

Note: Shaded areas reflect last revision(s) made to this form.

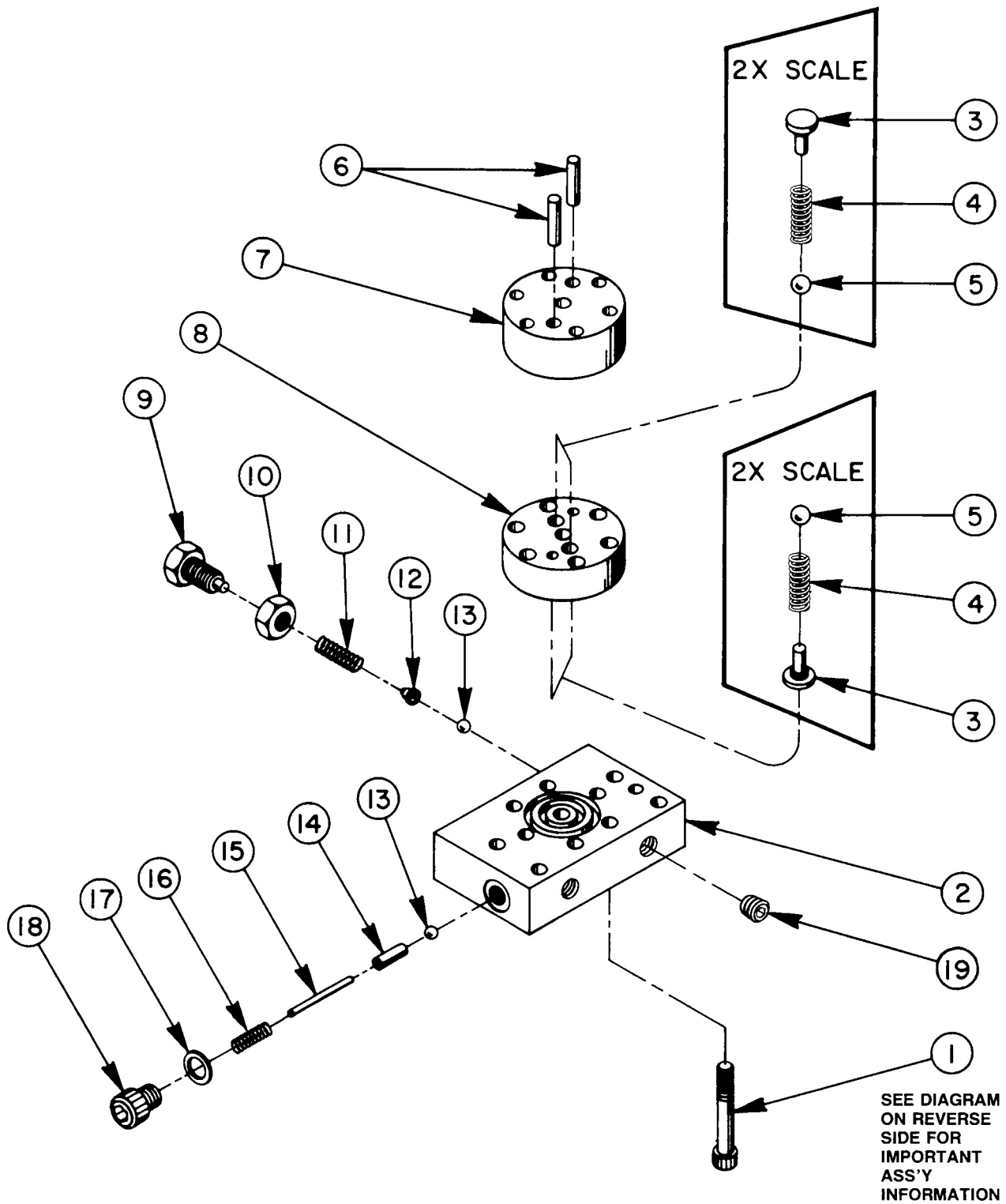
# BASIC PUMP ASSEMBLY



## Parts List, Form No. 100709, Back sheet 2 of 3

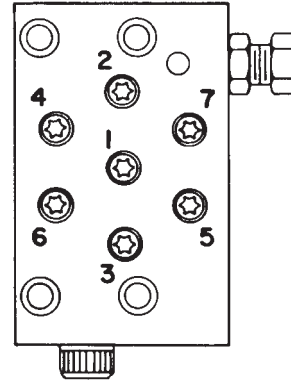
Item No.	Part No.	No. Req'd	Description
1	10267	1	O-ring (7/16 X 5/16 X 1/16)
2	52883	1	Pump Body
3	16320	1	Compression Spring (1/4 O.D. X 3/4 Lg.)
4	10375	1	Steel Ball (1/4" dia.)
5	23547	1	Top Plate Bearing
6	11814	1	Ball Bearing
7	23548	1	Top Plate
8	15431	1	Needle Thrust Bearing
9	15432	1	Needle Thrust Bearing Race
10	35271	1	Angle Plate
11	11228	1	Needle Thrust Bearing
12	11227	2	Needle Thrust Bearing Race
13	213706	1	Filler Cap
14	11084	1	Pipe Plug (Torque to 35/45 in. lbs. oiled)
15	15695	1	Ball Bearing
16	15693	1	Gerotor Set
17	307296	1	Wear Plate
18	213709	1	Washer Seal
19	10390	1	Nut (1/2-20 UNF)
20	213686	1	Intake Tube
21	10268	1	O-ring (1/2 X 3/8 X 1/16)
22	11863	1	Backup Washer (1/2 X 3/8 X 1/16)
23	21484	1	Washer
24	214762	1	Valve Connector (Torque to 20/30 ft. lbs.)
25	10261	1	Copper Washer (3/4 X 19/32 X 1/32)
26	10425	1	Compression Spring (3/8 O.D. X 3/4 Lg.)
27	20771	1	Poppet
28	201879	1	Check Valve Body
29	10430	1	Tube Sleeve
30	10431	1	Tube Nut (5/8-18 UNF; Torque to 40/50 ft. lbs. while holding Valve Connector; Item #24)
32	15642	5	Cap Screw (1/4-20 UNC X 5" Lg.; Torque to 55/65 in. lbs.)
33	214720	1	Spacer
34	21278	1	Relief Valve (Set at 10,100/10,700 PSI)
35	61566BK2	1	Cover
36	29682	1	Strainer
37	307459	1	Oil Line
38	10475	1	Elbow
39	37131	1	Pump Assembly (See Sheet 3 of 3)

# HIGH PRESSURE PUMP ASSEMBLY



Item No.	Part No.	No. Req'd	Description
1	*16747	7	Torx Drive Cap Screw (1/4-28 UNF X 1-3/4 Lg.; See diagram)
2	*36912	1	Pump End Plate
3	*24549	6	Valve Guide
4	*10445	6	Compression Spring (5/32 O.D. X 3/4 Lg.)
5	*12223	6	Steel Ball (3/16 dia.)
6	*20775	3	Piston
7	*40629	1	Pump Barrel
8	*40630	1	Valve Head
9	200797	1	Adjusting Screw
10	10386	1	Jam Nut
11	15691	1	Compression Spring (1/4 O.D. X 5/8 Lg.)
12	200796	1	Spring & Ball Adapter
13	10375	2	Steel Ball (1/4" dia.)
14	201998	1	Sleeve
15	12571	1	Roll Pin
16	14431	1	Compression spring (3/16 O.D. X 3/4 Lg.)
17	12042	1	Copper Washer (9/16 X 3/8 X 1/32)
18	29690	1	Cap Screw (Torque to 180 in. lbs.)
19	10427	1	Pipe Plug (1/8" NPTF)
20	306957	1	Air Bleed Valve

### BOLT TIGHTENING SEQUENCE



NOTE: Assemble in sequence shown. Lubricate under head and on threads. Torque to 170 in. lbs.

Consult factory when replacing items marked with an asterisk (\*).

### HYDRAULIC SCHEMATIC

