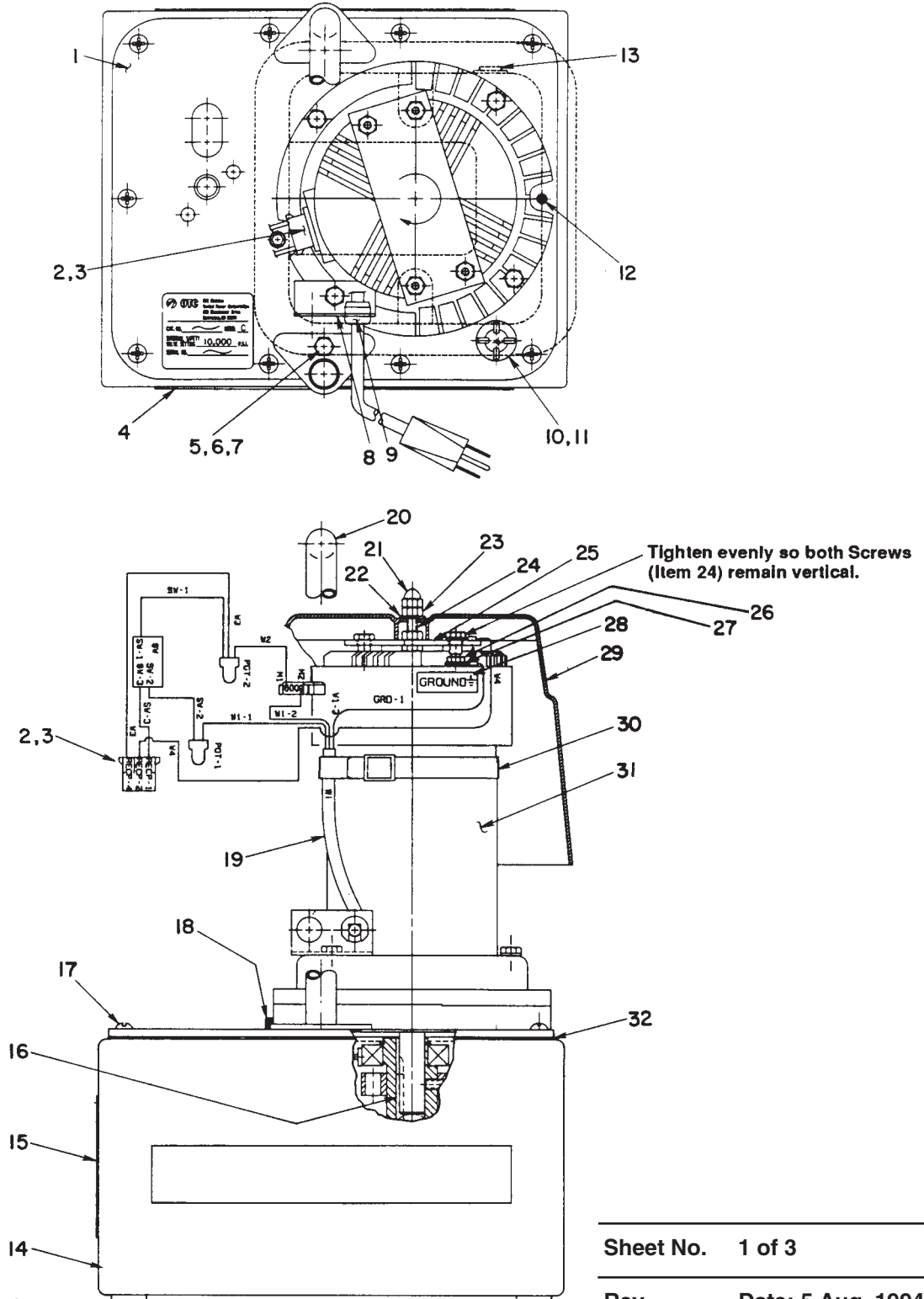


ELECTRIC HYDRAULIC PUMP



Parts List, Form No. 100719, Back sheet 1 of 3

Item No.	Part No.	No. Req'd	Description
1	61166BK2	1	Cover Plate
2	206903	5	Socket Contact
3	213180	2	Socket Housing Connector
4	309219	2	Trade Name Decal (For PE192 & PE194)
5	12825	2	Cap Screw (1/4-20 x 5/8" Lg.)
6	10199	2	Nut (1/4-20 UNC; Torque to 60/80 in. lbs.)
7	10245	2	Lockwasher
8	307198	1	Bracket
9	15993	1	Strain Relief Bushing
10	20937	1	Filler/Vent Plug
11	200415	1	Rubber Seal
12	15668	1	Set Screw (1/4-20 x 1/2 Lg.; Turn in until approx. flush with cover plate.)
13	308818	1	Rocker Switch
14	40063OR9	1	Reservoir (For PE192 & PE194)
	40063BL2	1	Reservoir (For 89302-00)
15	304850	1	Warning Decal
16	27778	1	Key
17	10177	9	Cap Screw (1/4-20 x 5/8 Lg.)
18	10030	1	Cap Screw (5/16-18 x 3/4 Lg.; Torque to 220/240 in. lbs.)
19	24733	1	Cord Set (16/3)
20	47492BK2	1	Handle
21	10486	2	Acorn Nut
22	12719	2	Washer (For 1/4 bolt)
23	10199	4	Nut (1/4-20 UNC)
24	213214	2	Cap Screw (1/4-20 x 1-1/4 Lg.)
25	307197	1	Plate
26	10197	2	Hex Nut (#10)
27	12355	2	Washer (#8)
28	205189	1	Ground Decal
29	215174	1	Motor Shroud
30	16763	1	Releasable Cable Tie
31	†46916	1	Electric Motor
32	40164	1	Gasket

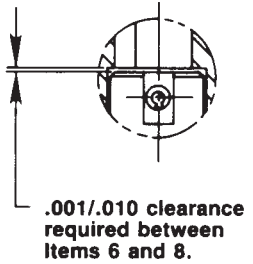
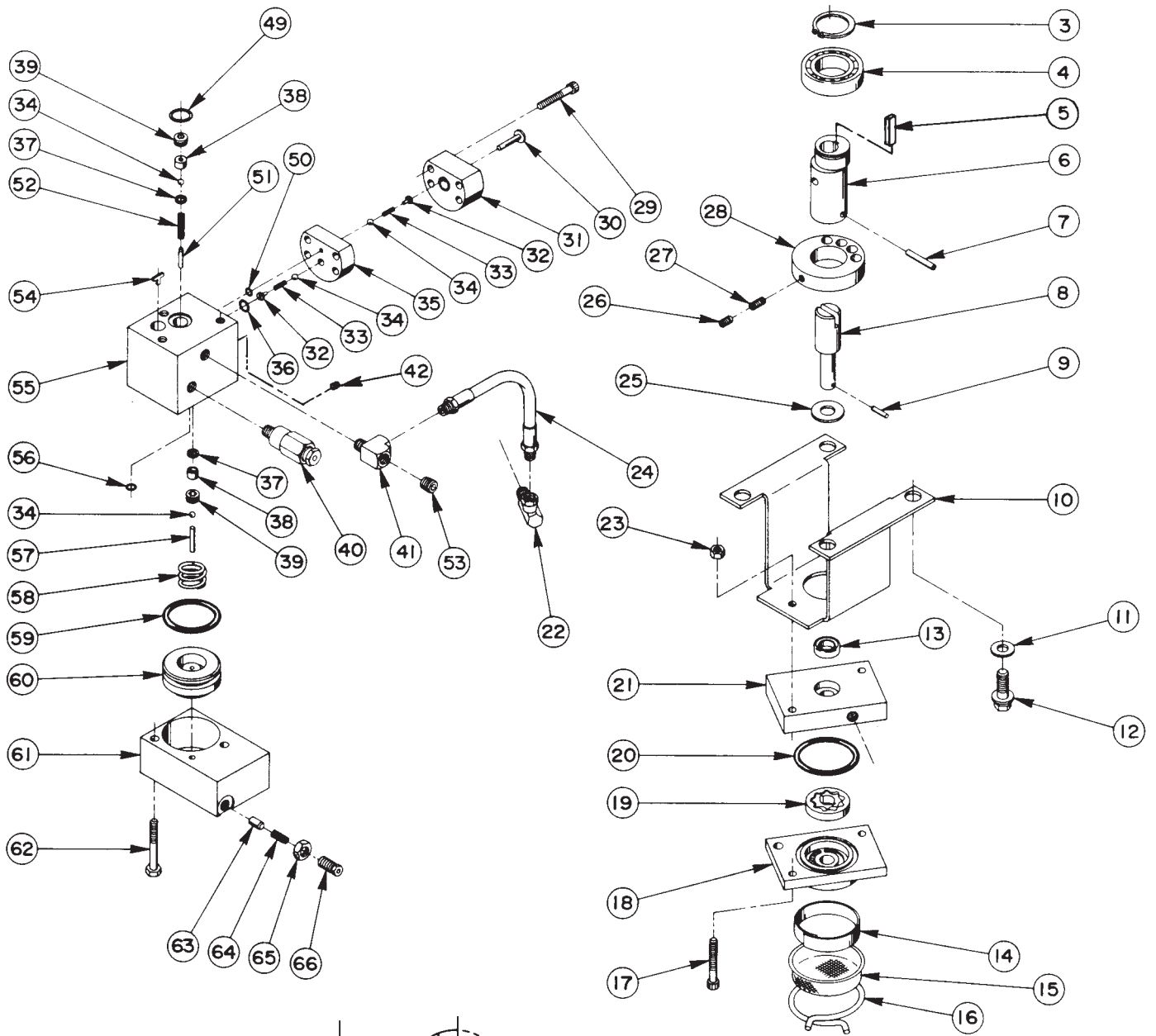
†NOTE: For replacement brush set for #46916 electric motor, order #250357.

Refer to any operating instructions included with the product for detailed information about operation, testing, disassembly, reassembly, and preventive maintenance.

Items found in this parts list have been carefully tested and selected. **Therefore: Use only genuine Power Team replacement parts!**

Additional questions can be directed to our Technical Services Department.

BASIC PUMP ASSEMBLY

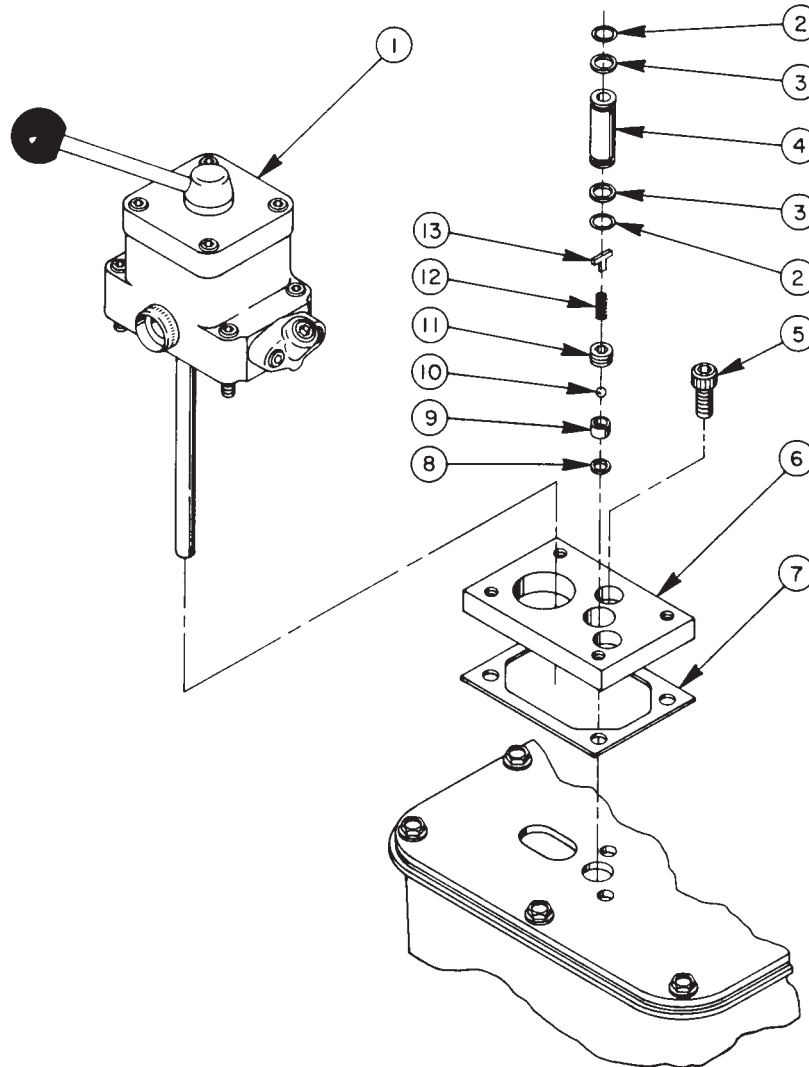


Parts List, Form No. 100719, Back sheet 2 of 3

Item No.	Part No.	No. Req'd	Description
3	209798	1	Retaining Ring (30 mm)
4	209805	1	Ball Bearing
5	27778	1	Key
6	45596	1	Eccentric
7	10973	1	Slotted Spring Pin (3/16 dia. x 1-1/4 Lg.)
8	304835	1	Drive Shaft
9	209794	1	Gerotor Drive Pin
10	52174	1	Pump Mounting Bracket
11	10258	4	Washer (For 3/8" bolt)
12	213663	4	Cap Screw (3/8-16 x 1" Lg.; Torque to 230/250 in. lbs.)
13	*304830	1	Seal
14	21846	1	Filter Support
15	21608	1	Filter
16	11461	1	Clamp Ring
17	10854	2	Cap Screw (1/4-20 x 1-3/4 Lg.; Torque to 60/80 in. lbs.)
18	61701	1	Lower Gerotor Housing
19	304826	1	Gerotor Set
20	*10922	1	O-ring (2-1/8 x 1-15/16 x 3/32, -135)
21	61702	1	Upper Gerotor Housing
22	14440	1	Swivel Elbow Fitting
23	10199	2	Nut (1/4-20 UNC)
24	304819	1	Hose Assembly
25	12595	1	Brass Washer
26	10519	1	Set Screw (1/4-20 x 3/8 Lg.; Torque to 60/80 in. lbs.)
27	10138	1	Set Screw (1/4-20 x 1/2 Lg.; Torque to 60/80 in. lbs.)
28	304886	1	Counterweight
29	10022	4	Cap Screw (1/4-20 x 1-1/2 Lg.; Torque to 180/200 in. lbs.)
30	304820	1	High Pressure Piston
31	45560	1	Piston Block
32	24549	2	Valve Guide
33	*10445	2	Compression Spring (.166 O.D. x 3/4 Lg.)
34	*12223	4	Ball (3/16 dia.)
35	45559	1	Check Block
36	*14763	1	O-ring (7/16 x 5/16 x 1/16, -011)
37	*10442	2	Copper Washer (3/8 x 1/4 x 1/32 Thk.)
38	*209787	2	Replaceable Seat
39	209797	2	Hollow Lock Screw (Torque to 180/200 in. lbs.)
40	21278	1	Relief Valve Assembly (Set at 10,100/10,700 PSI)
41	19463	1	Tee Fitting
42	15130	1	Pipe Plug (1/16 NPTF)
49	*10273	1	O-ring (13/16 x 5/8 x 3/32, -114)
50	*10265	1	O-ring (5/16 x 3/16 x 1/16, -008)
51	12149	1	Dowel Pin (1/8 dia. x 3/4 Lg.)
52	*16057	1	Compression Spring (3/16 O.D. x 1" Lg.)
53	10427	1	Pipe Plug (1/8 NPTF)
55	61167	1	Check Body
56	*10266	1	O-ring (3/8 x 1/4 x 1/16, -010)
57	211843	1	Dowel Pin (Loctite pin in piston hole with radius end out.)
58	*16346	1	Compression Spring (1" O.D.x 15/16 Lg.)
59	*10283	1	O-ring (2" x 1-5/8 x 3/16, -326)
60	46063	1	Automatic Valve Piston
61	52167	1	Automatic Valve Block
62	13037	2	Cap Screw (1/4-20 x 2" Lg.; Torque to 40/50 in. lbs.)
63	15156	1	Dowel Pin (Tapered end toward spring.)
64	*11221	1	Compression Spring (1/4 O.D. x 1" Lg.)
65	10386	1	Locknut (3/8-24 UNF)
66	*29786	1	Adjusting Screw

Part numbers marked with an asterisk (*) are contained in Repair Kit No. 300430.

4-WAY TANDEM CENTER DIRECTIONAL VALVE (USED ON PE194)



Item No.	Part No.	No. Req'd	Description
1	9500	1	4 Way Valve Ass'y (See Form No. 100623)
2	†*10268	2	O-ring (1/2 x 3/8 x 1/16; -012)
3	†*11863	2	Backup Washer (-012)
4	209809	1	Coupling
5	10030	2	Cap Screw (5/16-18 x 3/4" Lg.; Torque to 220/240 in. lbs.)
6	52165	1	Adapter Block Manifold

Item No.	Part No.	No. Req'd	Description
7	*200395	1	Gasket
8	†*10442	1	Copper Washer (1/32 Thk.)
9	†*209787	1	Replaceable Seat
10	†*12223	1	Steel Ball (3/16" Dia.)
11	209797	1	Hollow Lock Screw (Torque to 180/200 in. lbs.)
12	*14282	1	Comp. Spring (3/16 x 1/2" Lg.)
13	†209795	1	Outlet Ball Stop

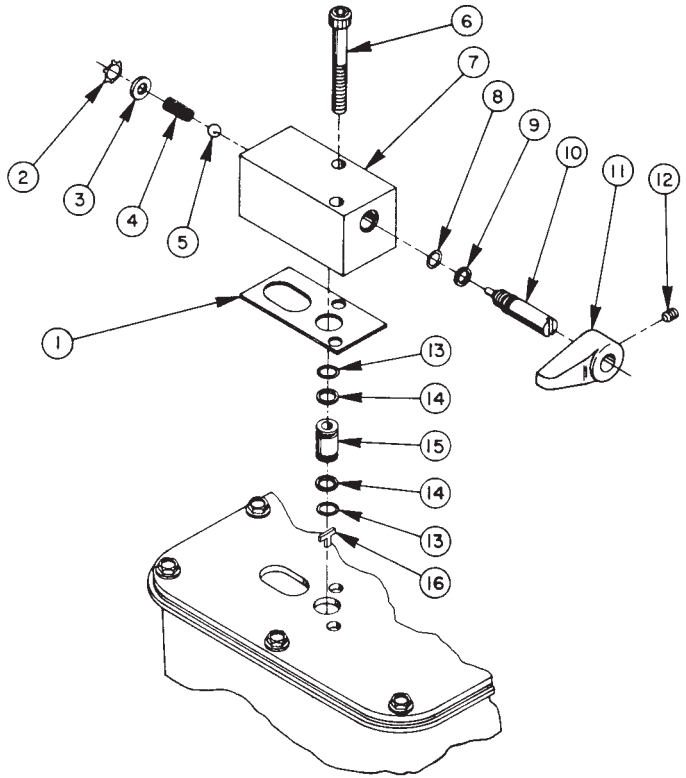
Part numbers marked with an asterisk(*) are contained in Repair Kit No. 300430.

Part numbers marked with a dagger(†) are contained in Repair Kit No. 300606.

2 POSITION, 2-WAY MANUAL VALVE

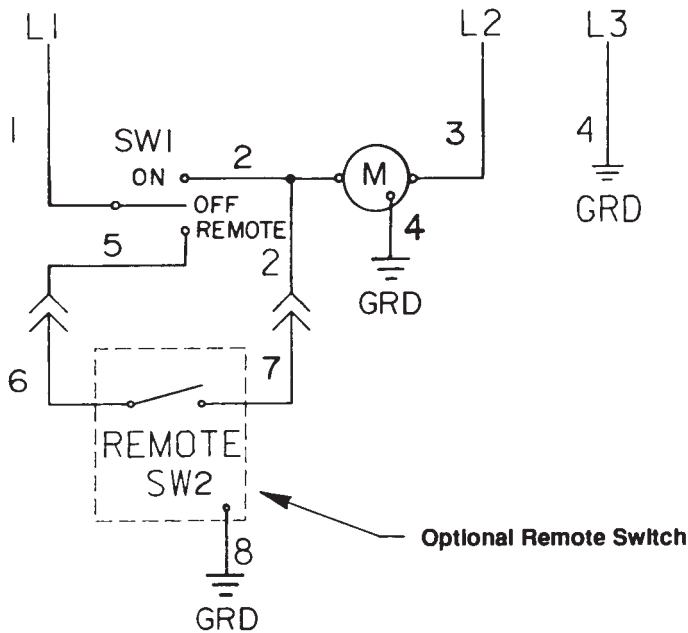
(USED ON 89302-00 & PE192)

Item No.	Part No.	No. Req'd	Description
1	*304829	1	Gasket
2	*11088	1	Retaining Ring (9/16 dia. hole)
3	11089	1	Washer (#10)
4	*11024	1	Compression Spring (1/4 O.D. x 5/8 Lg.)
5	*10423	1	Steel Ball (9/32 Dia.)
6	209945	2	Cap Screw (5/16-18 x 2-1/2 Lg.; Torque to 220/240 in. lbs.)
7	52168	1	Valve Body
8	*10267	1	O-ring (7/16 x 5/16 x 1/16)
9	*15085	1	Backup Washer
10	304849	1	Release Valve Screw
11	213109	1	Release Valve Handle
12	10556	1	Set Screw (1/4-20 x 1/4 Lg.)
13	*10268	2	O-ring (1/2 x 3/8 x 1/16)
14	*11863	2	Backup Washer
15	202505	1	Coupling
16	209795	1	Outlet Ball Stop (Part of the Basic Pump Ass'y)
	52170	1	Complete Valve Ass'y,



ELECTRICAL SCHEMATIC

115 VOLT, 60 HZ



WARNING

To help avoid personal injury, all electrical work must be done by a qualified electrician.

North American & International Color Codes

Conductors	North American	International
Line	Black	Brown
Neutral	White	Blue
Ground	Green	Green/Yellow