

Parts List for:

PR50  
 PR50-220

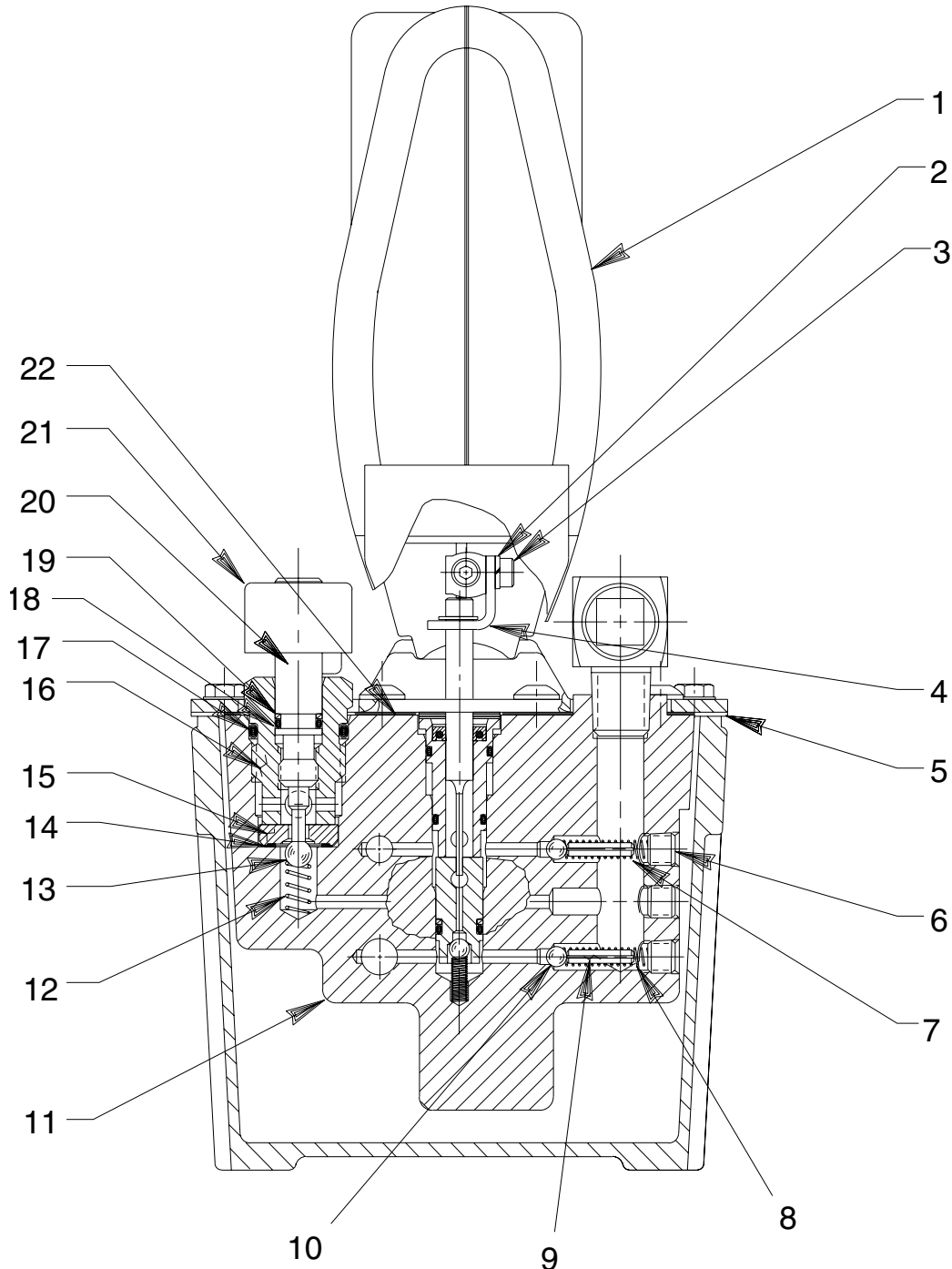
Internet Address:  
<http://www.powerteam.com>

200 PSI UNLOADING, RECHARGEABLE POWER SOURCE & MANUAL RELEASE VALVE

**TWO-STAGE HYDRAULIC PUMP**

Max. Capacity: 10,000 PSI

**END VIEW**

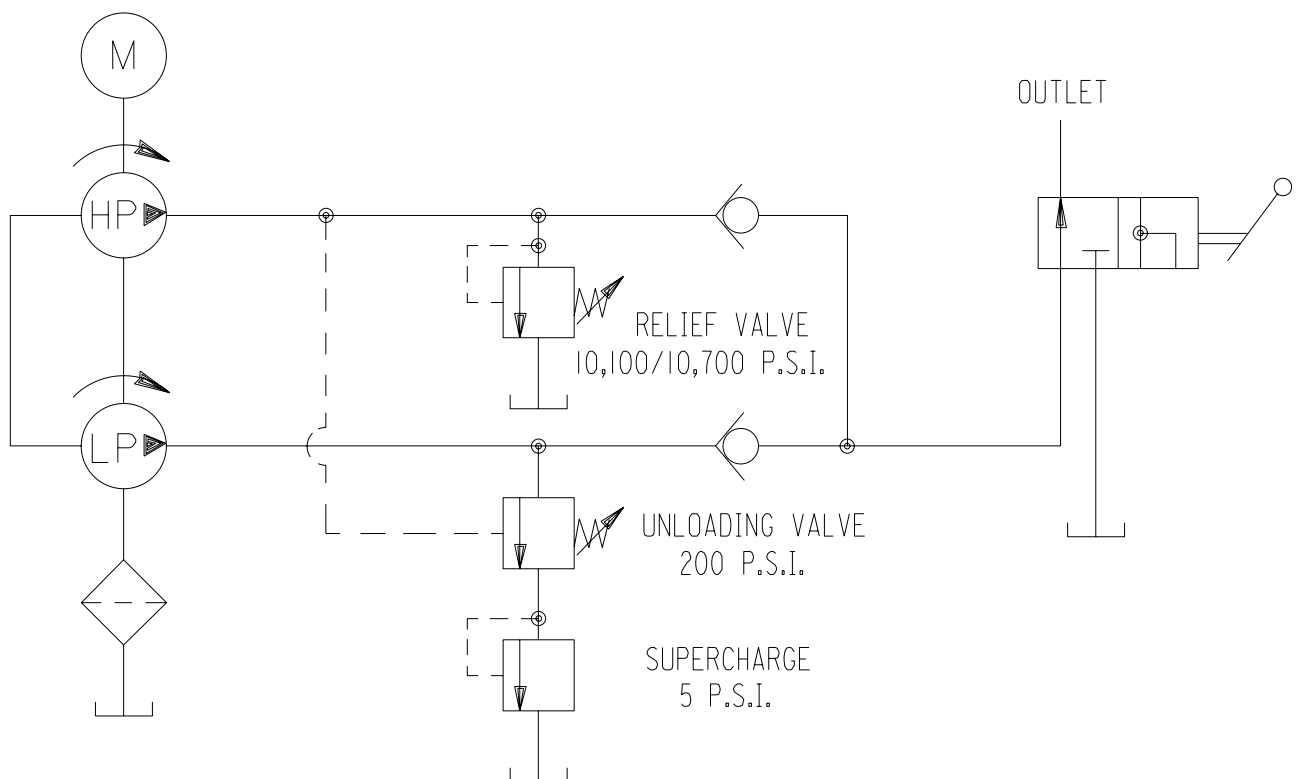


Sheet No.	1 of 3
Issue Date:	Rev. 12-15-91

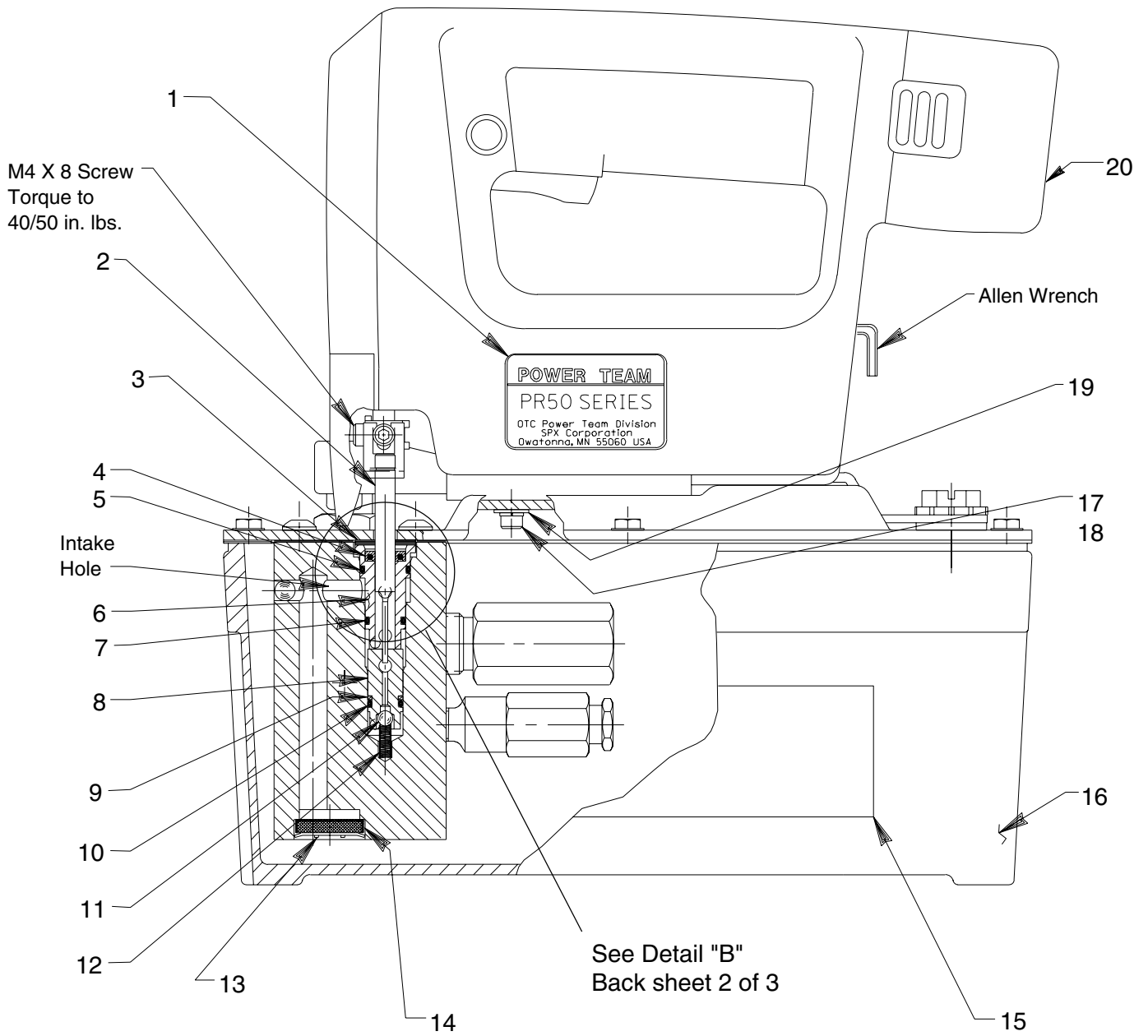
Item No.	Part No.	No. Req'd	Description
1	250029-BK8	1	Cordless Jig Saw
2	10240	1	Lockwasher (For M4 x 8 screw)
3	250035	1	Soc. Hd. Cap Screw (M4 x 8; Torque to 40/50 in. lbs.)
4	250030	1	Piston Clip
5	*350028	1	Reservoir Gasket
6	15130	3	Level Seal Plug (1/16 NPTF)
7	*15129	1	Compression Spring (3/16 O.D. x 7/8 Lg.)
8	*16057	1	Compression Spring (3/16 O.D. x 1" Lg.)
9	11560	2	Roll Pin (1/8 dia. x 5/8 Lg.)
10	*12223	2	Steel Ball (3/16 dia.)
11	64009	1	Pump Body
12	*11024	1	Compression Spring
13	*10375	1	Steel Ball (1/4 dia.)
14	*12042	1	Copper Washer
15	*250028	1	Replaceable Seat
16	350018	1	Release Valve Body (Torque to 70/80 ft. lbs.)
17	*10275	1	O-ring (-116)
18	*10267	1	O-ring (-011)
19	15085	1	O-ring Backup Washer (-011)
20	304849	1	Release Valve Screw
21	21643	1	Release Valve Handle
22	*350022	1	Pump Body Gasket

Part numbers marked with an asterisk (\*) are contained in Repair Kit No. 300580.

### HYDRAULIC SCHEMATIC



SIDE VIEW

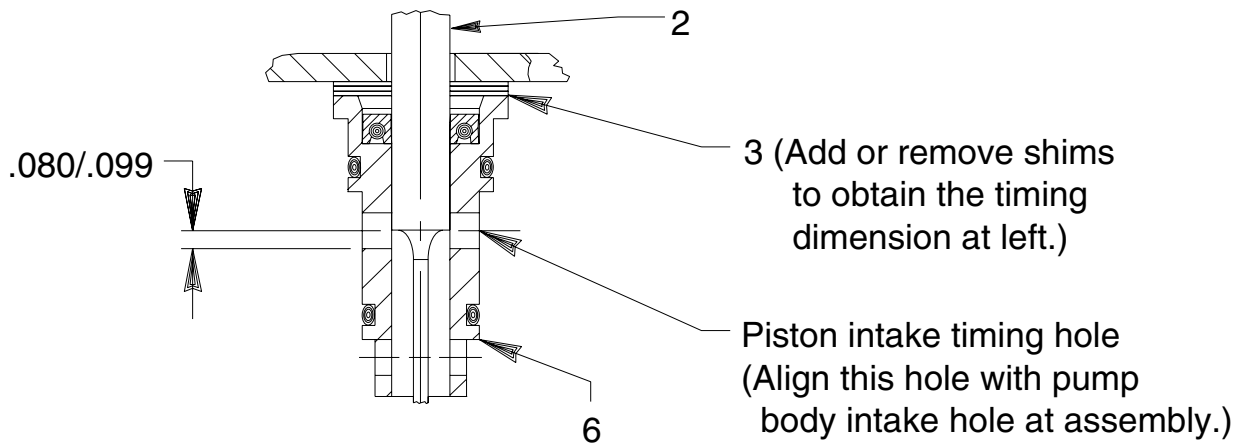


Item No.	Part No.	No. Req'd	Description
1	350023	2	Decal
2	†250038	1	Piston Assembly
3	250033	3	Shim (.020 Thk.)
4	†*250032	1	U-cup
5	†*10301	1	O-ring (-014)
6	†350019	1	Low Pressure Cartridge
7	†*10268	1	O-ring (-012)
8	†350020	1	High Pressure Cartridge
9	†*15085	1	O-ring Backup Washer (-011)
10	†*10267	1	O-ring (-011)
11	*12223	1	Steel Ball (3/16 dia.)
12	*10445	1	Compression Spring
13	*214586	1	Retaining Ring
14	*214578	1	Filter
15	305496	2	Decal
16	61243	1	Reservoir
17	250039	1	Soc. Hd. Cap Screw (M4 x 16; Torque to 25/35 in. lbs.)
18	10240	1	Lockwasher (M4 x 8 screw)
19	*214585	1	Seal Washer
20	250034	1	Battery

**PARTS INCLUDED BUT NOT SHOWN**

250040	1	Battery Charger (115 V.; For PR50)
250196	1	Battery Charger (220 V.; For PR50-220)

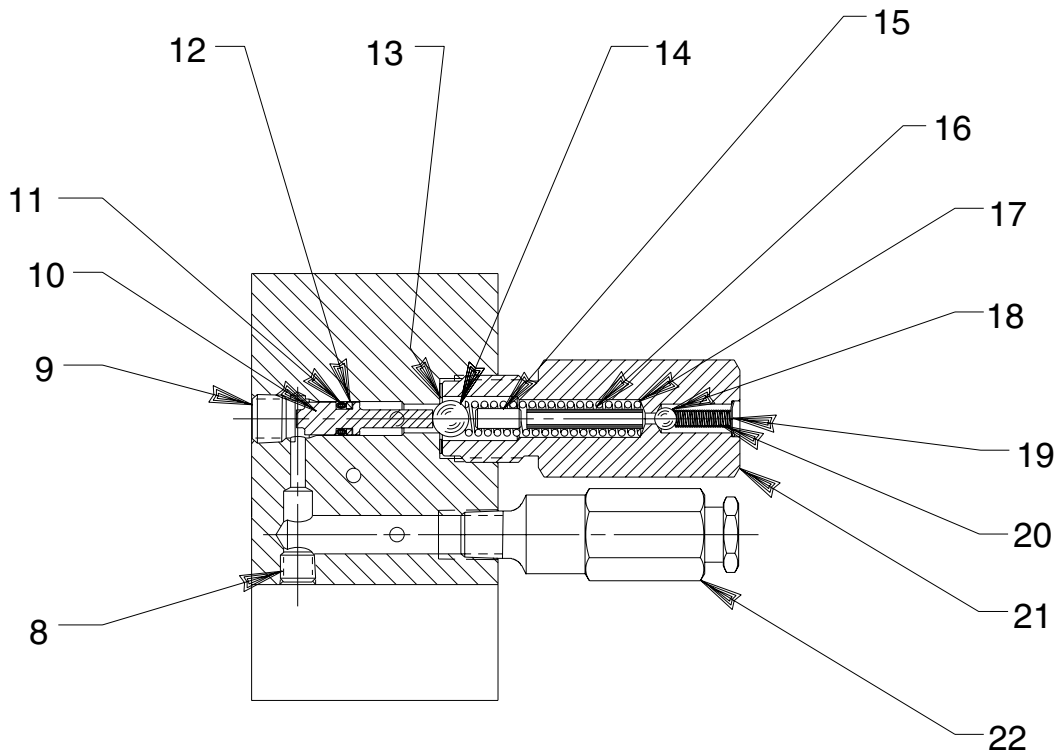
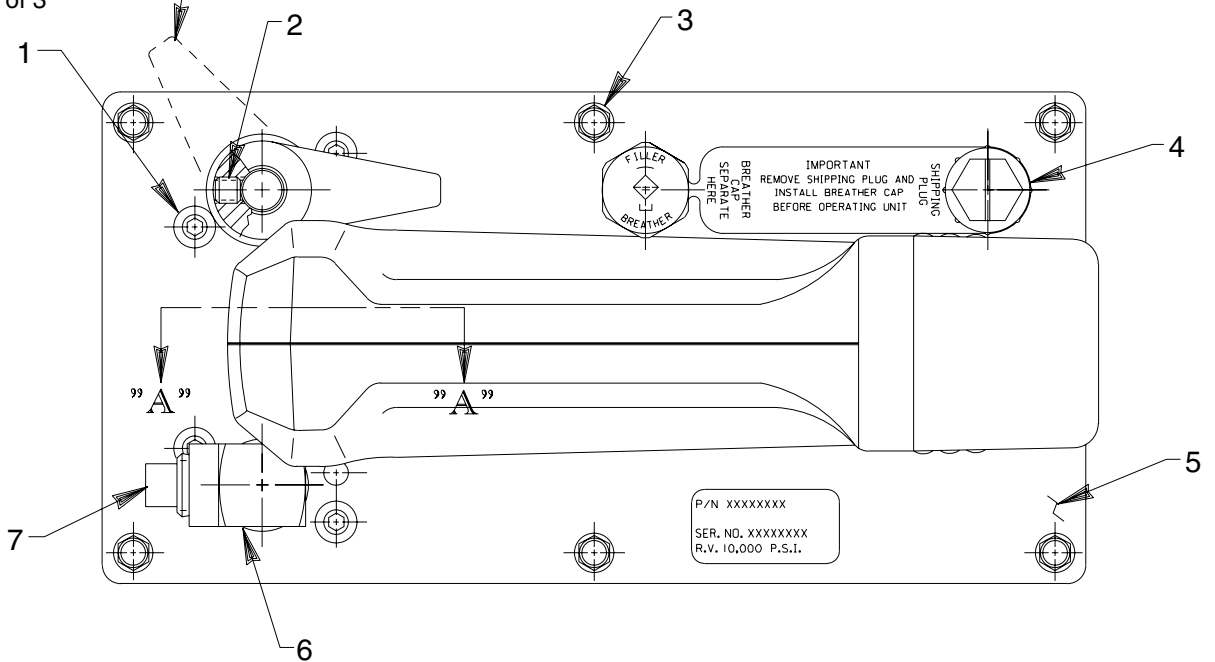
Part numbers marked with an asterisk (\*) are contained in Repair Kit No. 300580.  
 Part numbers marked with a dagger (†) are contained in Repair Kit No. 300587.



**DETAIL "B"**

### TOP VIEW

Knob should be in this position when screw (Item #20) touches ball (Item #13). Refer to sheet 1 of 3



### DETAIL A-A

## Parts List, Form No. 100815, Back sheet 3 of 3

---

Item No.	Part No.	No. Req'd	Description
1	15911	6	Soc. Button Hd. Cap Screw (1/4-20 x 5/8 Lg.; Torque to 80/90 in. lbs.)
2	10556	2	Set Screw (1/4-20 UNC x 1/4 Lg.; Torque to 50/60 in. lbs.)
3	211060	6	Hex. Washer Hd. Screw (Torque to 25/30 in. lbs.)
4	*20937S	1	Filler/Breather Cap & Shipping Plug
5	58009-BK2	1	Cover Plate
6	16797	1	Elbow 90° Fitting
7	11127	1	Plug (3/8 NPTF)
8	15130	1	Level Seal Plug (1/16 NPTF)
9	10427	1	Plug (1/8 NPTF)
10	250037	1	Unloading Valve Piston
11	*12099	1	O-ring (-007)
12	*207354	1	Backup Washer (-007)
13	*15655	1	Copper Washer
14	*10377	1	Steel Ball (5/16 dia.)
15	*250051	1	Ball Stop
16	*10481	1	Slotted Roll Pin (3/16 dia. x 1" Lg.)
17	*16470	1	Compression Spring
18	*12223	1	Steel Ball (3/16 dia.)
19	*12041	1	Retaining Ring (5/16 dia.)
20	*211797	1	Compression Spring
21	350021	1	Spring Retainer (Torque to 70/80 ft. lbs.)
22	21278	1	Relief Valve (Set at 10,100/10,700 PSI)

Part numbers marked with an asterisk (\*) are contained in Repair Kit No. 300580.

Refer to any operating instructions included with this product for detailed information about operation, testing, disassembly, reassembly, and preventive maintenance.

Items found in this parts list have been carefully tested and selected. **Therefore: Use only genuine replacement parts!**

Additional questions can be directed to our Technical Services Department.