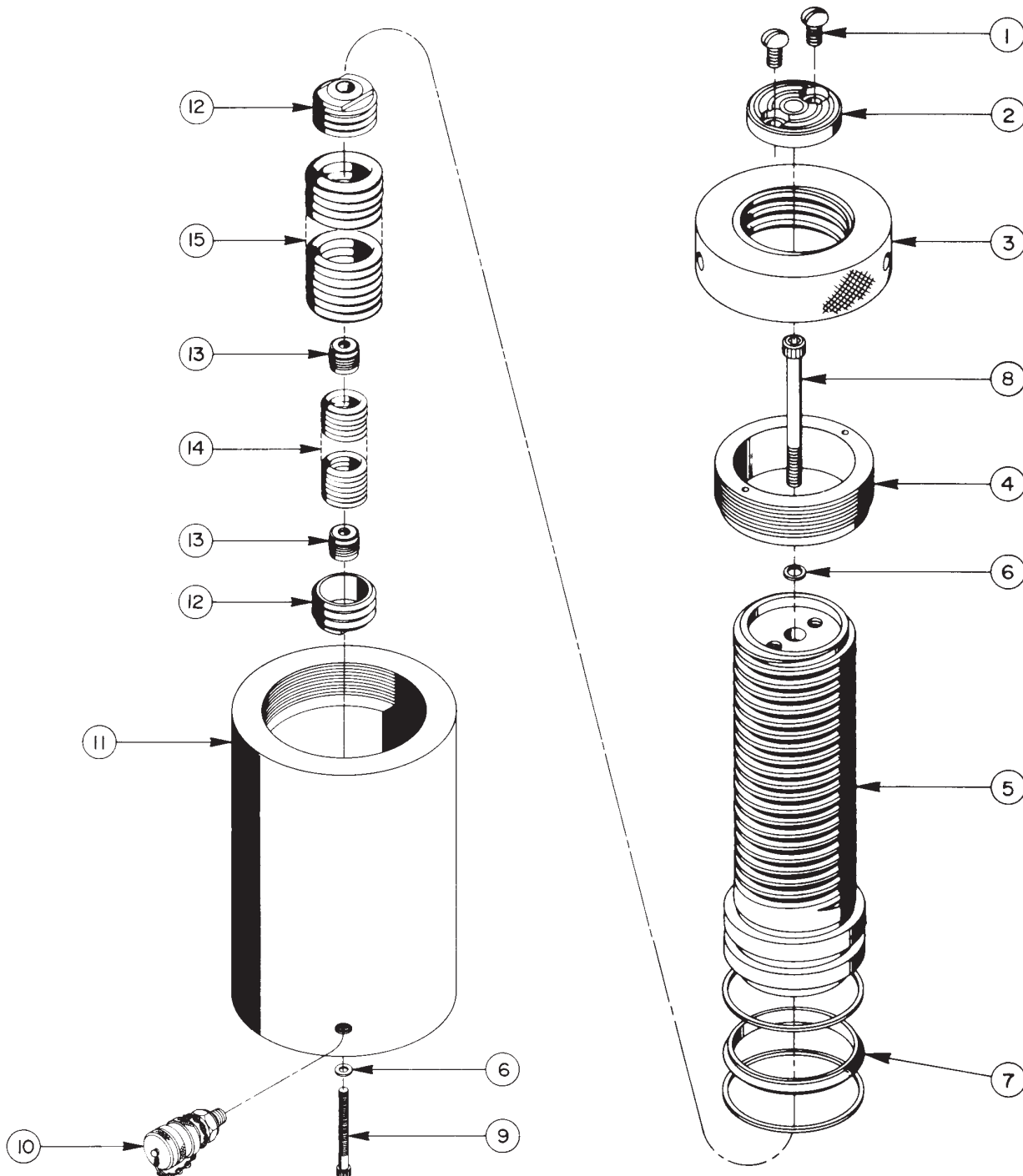


**SINGLE-ACTING, SPRING RETURN
 HYDRAULIC CYLINDER**
 Max. Capacity: 103.1 Tons at 10,000 PSI



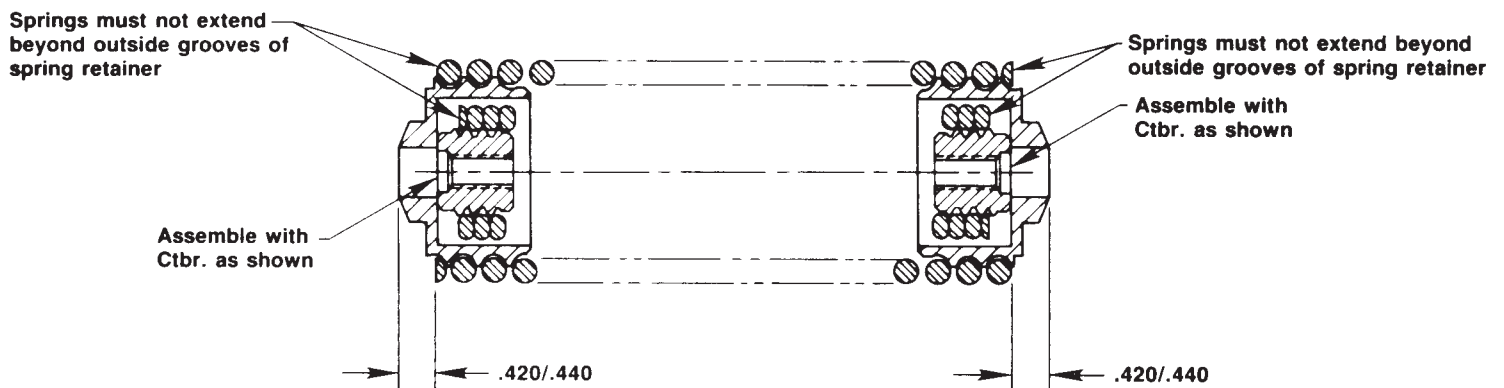
Item No.	Part No.	No. Req'd	Description
1	16112	2	Machine Screw (3/8-16 x 3/4 Lg.)
2	302651	1	Front Plate
3	420019	1	Locking Ring
4	420018	1	Retainer Nut (Torque to 90/100 ft. lbs. wet or dry)
5	58013	1	Threaded Piston
6	*12042	2	Copper Washer (9/16 x 3/8 x 1/32)
7	*19207	1	T-Seal & Backup Rings (Smooth side of Backup Ring must be against seal.)
8	13196	1	Cap Screw (3/8-16 x 4-1/2 Lg.; Torque to 400/425 in. lbs.)
9	16110	1	Cap Screw (3/8-16 x 3-1/2 Lg.; Torque to 400/425 in. lbs.)
10	25600	1	Quick Coupler
11	58011	1	Cylinder Body
12	36084	2	Spring Retainer (See assembly instructions below)
13	201417	2	Spring Retainer (See assembly instructions below)
14	201475	1	Extension Spring
15	201474	1	Extension Spring

PARTS INCLUDED BUT NOT SHOWN

420376OR9	1	Lift Handle Assembly (Shipped loose)
200056	1	Locknut Handle
350027	1	Trade Name Decal
*304937	1	Warning Decal
*37782	1	Warning Decal

Part numbers marked with an asterisk (*) are contained in Repair Kit No. 300396.

SPRING & RETAINER ASSEMBLY



Refer to any operating instructions included with this product for detailed information about operation, testing, disassembly, reassembly, and preventive maintenance.

Items found in this parts list have been carefully tested and selected. **Therefore: Use only genuine Power Team replacement parts!**

Additional questions can be directed to our Technical Services Department.