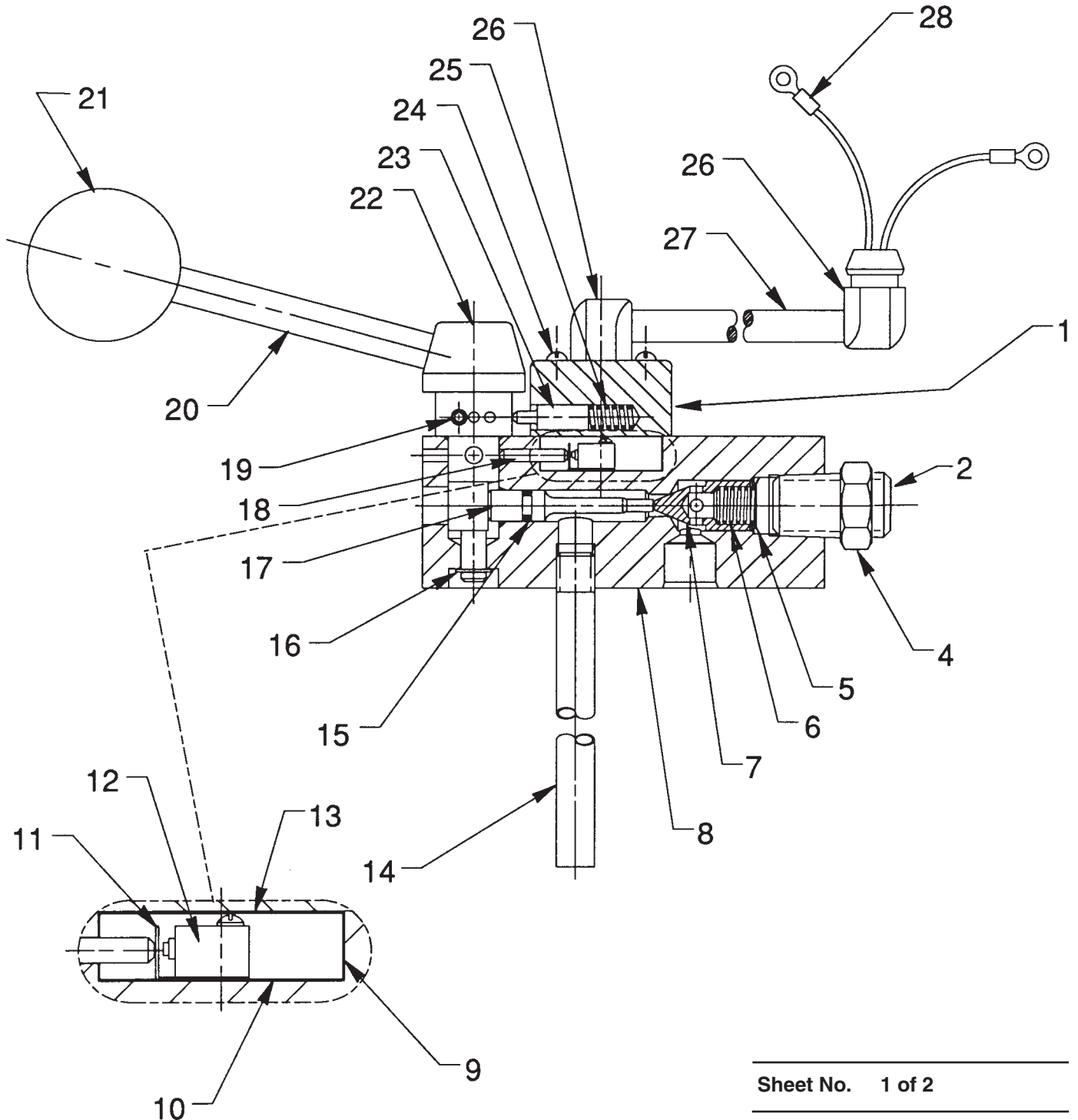


MODEL B
THREE POSITION, SINGLE-ACTING, ELECTRIC MOTOR SHUT-OFF
VALVE ASSEMBLY
 Max. Capacity: 10,000 PSI



Sheet No.	1 of 2
Rev.	Date: 1 Dec. 1992

Parts List, Form No. 101243, Back sheet 1 of 2

Item No.	Part No.	No. Req'd	Description
1	22745	1	Cover
2	10479	1	Pipe Plug (1/4 NPTF)
4	10676	1	Straight Fitting
5	11088	1	Retaining Ring
6	10425	1	Compression Spring (3/8 O.D. X 3/4 Lg.)
7	20771	1	Poppet
8	58172	1	Valve Body
9	203945	1	Insulating Strip
10	203946	1	Insulating Disc (Lower)
11	10829	1	Micro-switch Auxiliary Actuator
12	10489	1	Micro Switch
13	203944	1	Insulating Disc (Upper)
14	20847	1	Drain Line
15	10265	1	O-ring (5/16 x 3/16 x 1/16, -008)
16	10482	1	Retaining Ring
17	21015	1	Valve Pin
18	21375	1	Pin
19	10481	1	Slotted Spring Pin (5/32 Dia. X 1" Lg.)
20	21639	1	Stud (3/8 dia.)
21	211911	1	Plastic Knob
22	21374	1	Eccentric Valve Stem
23	21376	1	Plunger
24	10162	4	Rd. Hd. Machine Screw (#8-32 x 1" Lg.)
25	10360	1	Compression Spring (1/4 O.D. X 5/8 Lg.)
26	12176	2	Strain Relief Bushing
27	11423	2.5 ft.	Electrical Cable (18/2 SJT)
28	10458	2	Ring Tongue Terminal

PARTS INCLUDED BUT NOT SHOWN

10022	4	Soc. Hd. Cap Screw (1/4-20 x 1-1/2 Lg.)
-------	---	--

Refer to any operating instructions included with this product for detailed information about operation, testing, disassembly, reassembly, and preventive maintenance.

Items found in this parts list have been carefully tested and selected. **Therefore: Use only genuine Power Team replacement parts!**

Additional questions can be directed to our Technical Services Department.

SPECIFICATIONS

A sub-plate mounted, manually-operated, detent positioned, 3-way valve. The valve has "advance," "hold" and "return" positions and is intended for use in circuits employing a single-acting cylinder. An integral motor control switch turns the power unit off when in the "hold" or "return" positions. This permits oil, when valve is in "return" position, to return to the reservoir from the cylinder at a much faster rate than would be possible if the pump were running. A pressure switch and/or gauge can be attached if required.

Port Size: 3/8" NPTF
 Max. Pressure: 10,000 PSI
 Max. Recommended Flow: 5 GPM

VALVE OPERATION

Position "A" - Advance position. Valve is closed and power unit is running. Oil is delivered to the system through port "A."

Position "B" - Hold position. Valve is closed and power unit is stopped. Pressure is maintained in the system.

Position "C" - Return position. Valve is open and power unit is stopped. Pressure is released and oil returns to the reservoir.

