

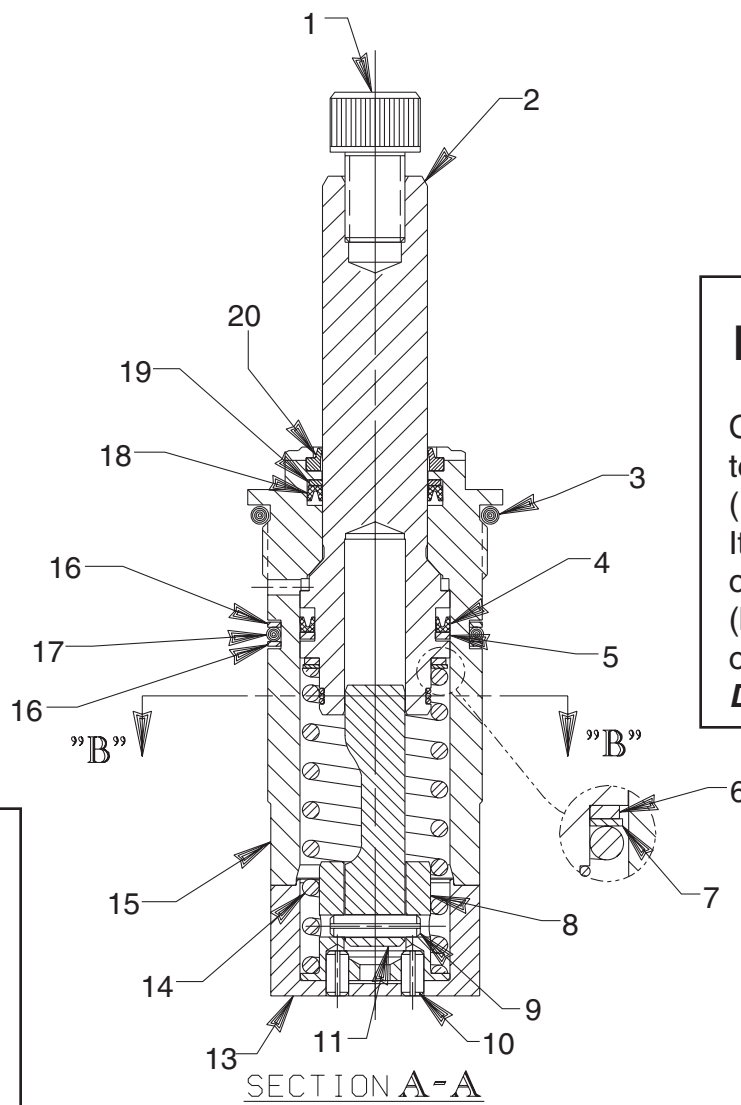
## SINGLE-ACTING, CARTRIDGE STYLE MOUNT MODEL C SWING CLAMP

Capacity: 2400 lbs. Clamping Force (with 2" lg. arm) at 5,000 PSI Max.

100859 - Left Hand, 1/2" Stroke; 100860 - Right Hand, 1/2" Stroke

100868 - Straight Pull, 1/2" Stroke

To Parts  
List



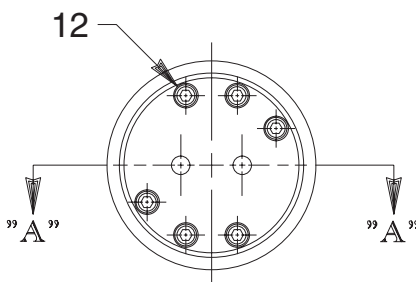
### IMPORTANT!

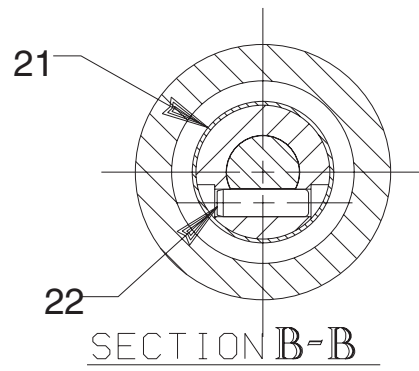
Carefully compare  
teflon washers  
(Items 5 and 6).  
Item 5 is the *larger*  
of the two washers  
(both inside and  
outside diameters).  
**DO NOT REVERSE!**

Refer to any operating  
instructions included with  
this product for detailed  
information about  
operation, testing,  
disassembly, reassembly,  
and preventive  
maintenance.

Items found in this parts  
list have been carefully  
tested and selected.  
**Therefore: Use only  
genuine Power Team  
replacement parts!**

Additional questions can  
be directed to our  
Technical Services  
Department.





Item No.	Part No.	No. Req'd	Description
1	213836	1	Cap Screw (1/2-20 UNF x 3/4 Lg.; For standard arms. Torque to 40/60 ft. lbs.)
2	420279	1	Piston Rod
3	*15892	1	O-ring (1.956 X 1.720 X .118, -924)
4	*250620	1	V-ring
5	*250621	1	Backup Washer (1-1/4 x 1.014 x .048)
6	*210364	1	Backup Washer (1.175 X .937 X .048)
7	*251100	1	Special Washer (Note: Assemble with larger radii towards Backup Washer [Item #6]. Must be grease and oil free.)
8	350294	1	Cam Adapter
9	10782	1	Pin (Assemble with slot towards bottom of clamp.)
10	250622	2	Spring Pin (Assemble flush to bottom of End Cap [Item#13] with slots toward center of End Cap.)
11	350397	1	Rotating Cam (Left Hand† 90° for 100859)
	350912	1	Rotating Cam (Left Hand† 30°)
	350913	1	Rotating Cam (Left Hand† 45°)
	350914	1	Rotating Cam (Left Hand† 60°)
	350398	1	Rotating Cam (Right Hand† 90° for 100860)
	350915	1	Rotating Cam (Right Hand† 30°)
	350916	1	Rotating Cam (Right Hand† 45°)
	350917	1	Rotating Cam (Right Hand† 60°)
	350343	1	Rotating Cam (Straight Pull for 100868)
12	250618	6	Cap Screw (#6-32 UNC x 1" Lg.; Torque to 30/40 in. lbs.)
13	350293	1	End Cap
14	250619	1	Compression Spring (1-1/4 O.D. x 3-1/2 Lg.)
15	64337	1	Swing Clamp Body
16	*19134	2	Backup Washer (1-3/4 x 1-9/16 c .048, -129)
17	*250909	1	O-ring (1-3/4 x 1-9/16 x 3/32, -129)
18	*250480	1	V-cup
19	*250479	1	Backup Washer (1.113 x 7/8 x .048)
20	*250478	1	Rod Wiper
21	250483	1	Retaining Ring
22	250482	1	Dowel Pin (Grease pin hole [Item #2] and cam with light coating of CDM Extreme Pressure Lube #3.)

Part numbers marked with an asterisk (\*) are contained in Repair Kit No. 300611.

† Right hand rotation is clockwise rotation when viewed from the piston rod end. Left hand is counterclockwise rotation. To reverse clamp rotation, order the appropriate rotating cam.



Note: Shaded areas reflect last revision(s) made to this form.