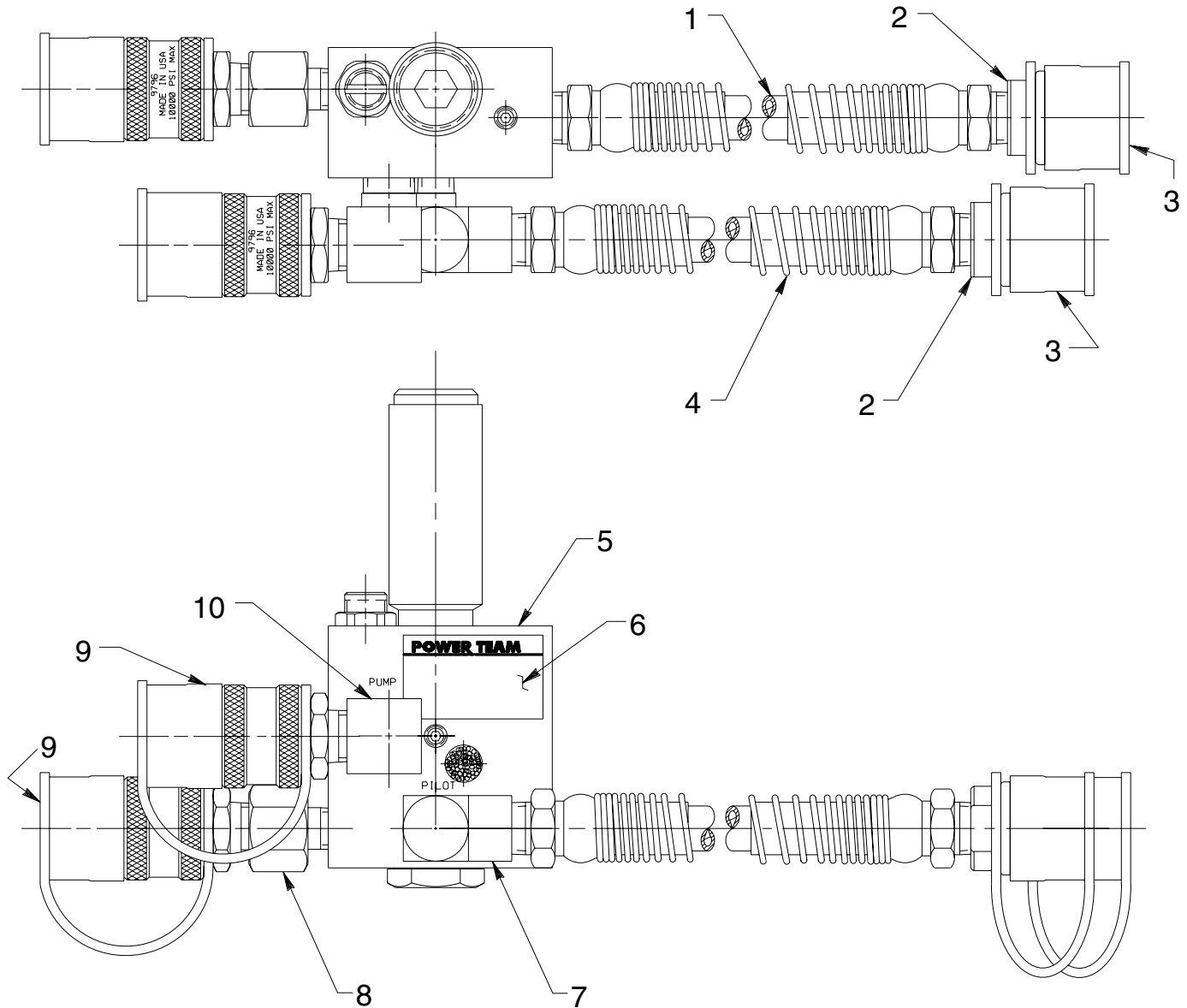


PILOT OPERATED LOAD LOWERING VALVE ASSEMBLY

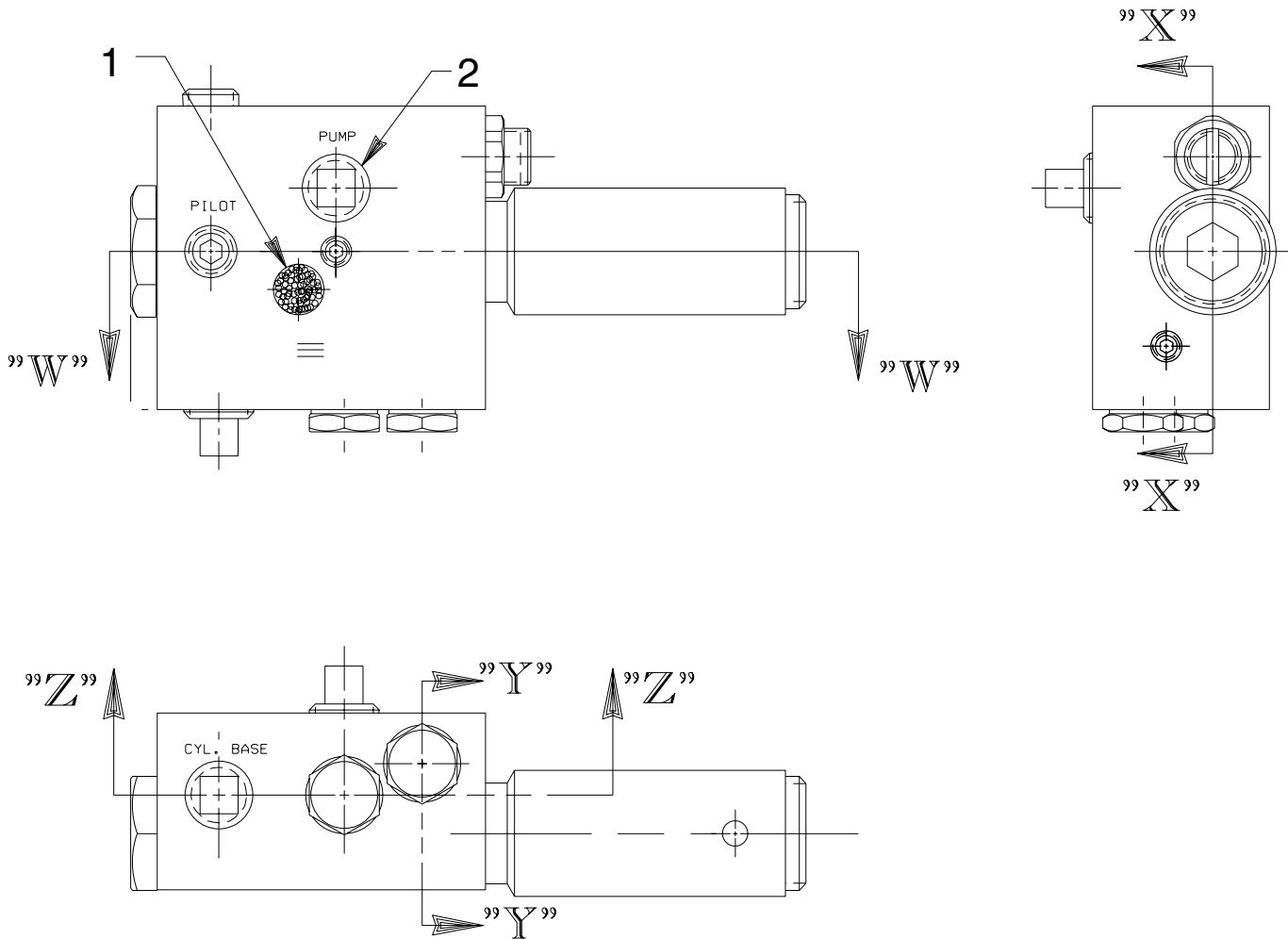


Item No.	Part No.	No. Req'd	Description
1	307968	1	Hose
2	25599	2	Hose Half Coupler
3	9800	2	Coupler Dust Cover
4	36891	1	Hose Assembly (3-1/4 ft.)
5	58334	1	Load Lowering Valve

(See back sheet 1 of 2 and sheet 2 of 2)

Item No.	Part No.	No. Req'd	Description
6	251012	1	Trade Name Decal
7	16797	1	90° Elbow Fitting
8	9689	1	Straight Fitting
9	25600	2	Ram Half Coupler with Plastic Dust Cap
10	9681	1	90° Elbow Fitting

BASIC VALVE ASSEMBLY



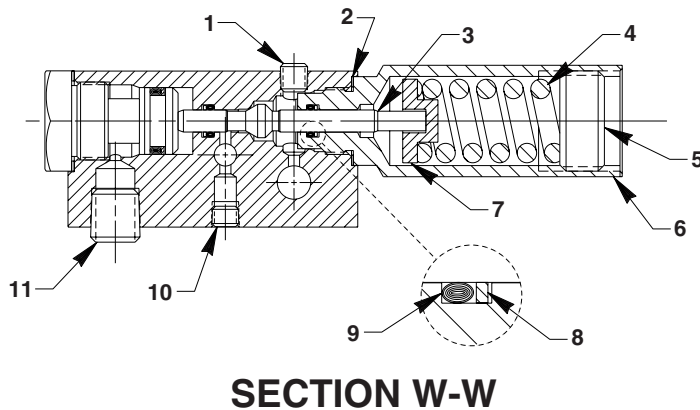
Item No.	Part No.	No. Req'd	Description
1	251016	1	Vent Filter (Add 3-4 drops of oil into pilot piston cavity, then stake filter in place.)
2	11127	1	Pressure Plug (3/8 NPTF)

Refer to any operating instructions included with this product for detailed information about operation, testing, disassembly, reassembly, and preventive maintenance.

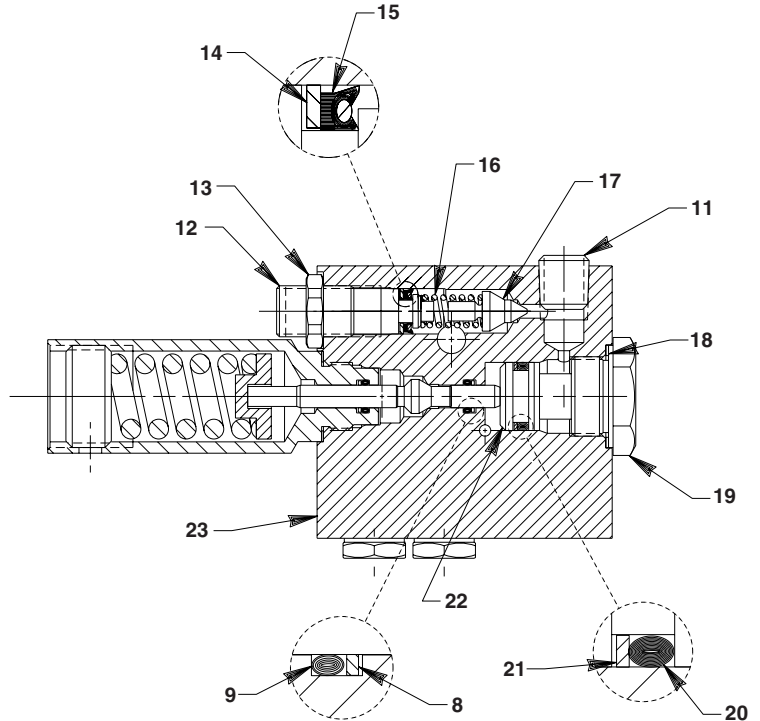
Items found in this parts list have been carefully tested and selected. **Therefore: Use only genuine Power Team replacement parts!**

Additional questions can be directed to our Technical Services Department.

SECTIONS W-W & X-X



SECTION W-W



SECTION X-X

Note: Assemble Items #12, #14 & #15 into a .550 dia. bushing and cool to 0°F before installing.

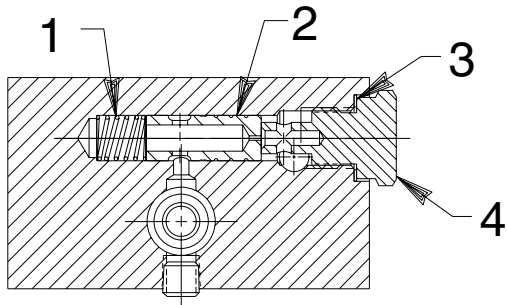
Item No.	Part No.	No. Req'd	Description
1	11084	1	Plug (1/16 NPTF)
2	*10263	1	Copper Washer (1" X .765 X 1/32)
3	350579	1	Balanced Poppet
4	209259	1	Comp. Spring (1" O.D. x 2" Lg.)
5	251004	1	Adjustment Nut (Add body filler to screwdriver slots after adjustment.)
6	350581	1	Spring Housing (Torque to 60/70 ft. lbs.)
7	209249	1	Spring Guide
8	*12184	2	Backup Washer (3/8 X 1/4 X .048)
9	*211053	2	O-ring (3/8 X 1/4 X 1/16)
10	15130	1	Plug (1/16 NPTF)
11	14972	2	Plug (1/4 NPTF)
12	250913	1	Adjustment Screw (Add body filler to screwdriver slots after adjustment.)

Item No.	Part No.	No. Req'd	Description
13	250914	1	Special Hex Nut
14	*251005	1	Backup Washer (1/2 x 1/4 x .048)
15	*250032	1	U-cup
16	207494	1	Compression Spring (7/32 O.D. x 23/32 Lg.)
17	21046	1	Valve Stem
18	*12953	1	Washer (1-1/8 X 57/64 X 1/32)
19	350580	1	Piston Stop (Torque to 75/80 ft. lbs.)
20	*10272	1	O-ring (3/4 X 9/16 X 3/32)
21	*19130	1	Backup Washer (3/4 x 9/16 x .048)
22	250912	1	Pilot Piston
23	64345	1	Valve Body

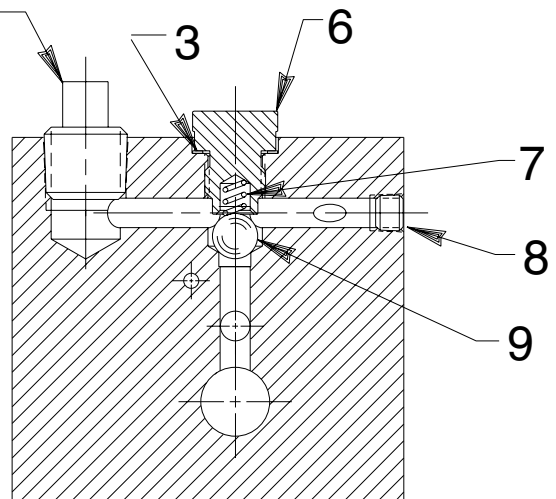
Part numbers marked with an asterisk (*) are contained in Repair Kit No. 300636.

Note: Shaded areas reflect last revision(s) made to this form.

SECTIONS Y-Y & Z-Z



SECTION Y-Y



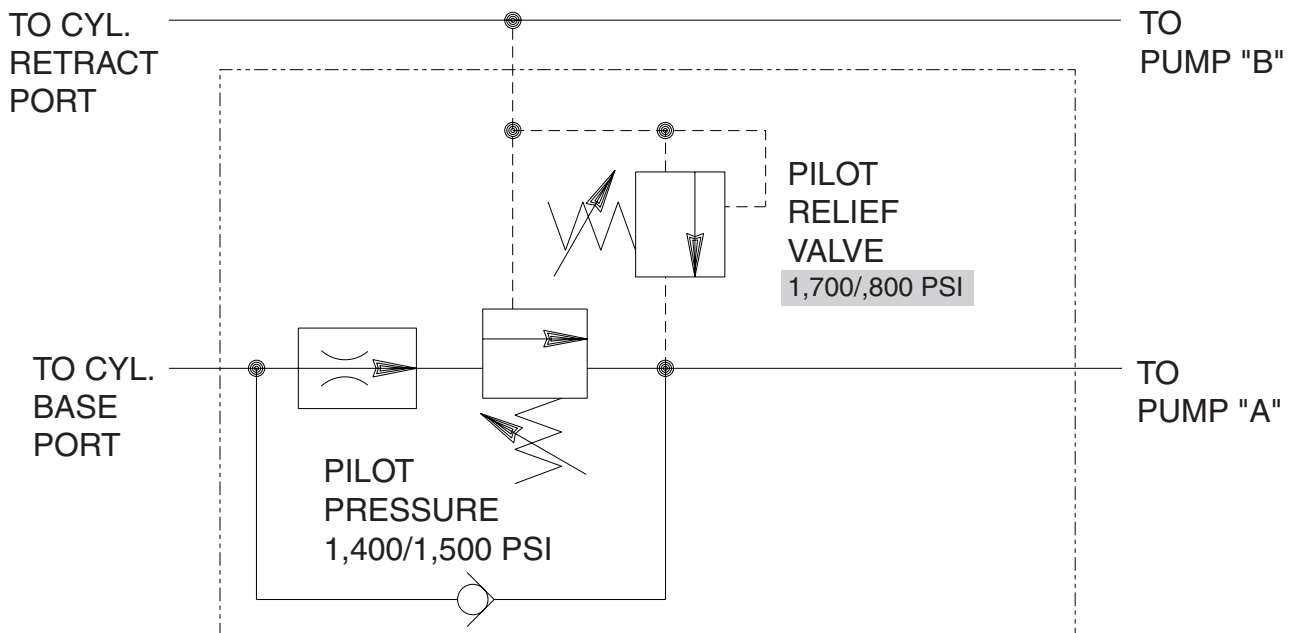
SECTION Z-Z

Item No.	Part No.	No. Req'd	Description
1	250228	1	Compression Spring (5/16 O.D. x 1" Lg.)
2	251116	1	Spool
3	*14874	2	Soft Copper Washer (.700 X 1/2 X 1/32)
4	350578	1	Valve Screw (Torque to 340/360 in. lbs.)

Item No.	Part No.	No. Req'd	Description
5	11127	1	Pressure Plug (3/8 NPTF)
6	305975	1	Valve Screw (Torque to 340/360 in. lbs.)
7	10444	1	Compression Spring (3/16 I.D. X 13/32 Lg.)
8	15130	1	Plug (1/16 NPTF)
9	10378	1	Steel Ball (3/8 Dia.; Form seat with seating tool before assembly.)

Part numbers marked with an asterisk (*) are contained in Repair Kit No. 300636.

HYDRAULIC SCHEMATIC



Note: Shaded areas reflect last revision(s) made to this form.

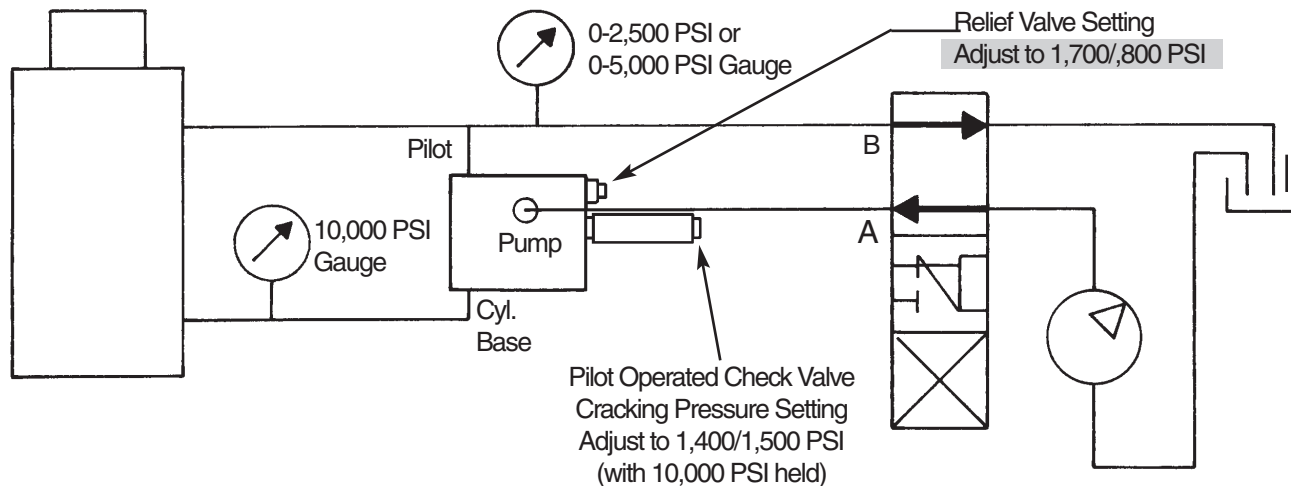
TEST PROCEDURE

A. Test Connections

Refer to illustration below.

Note: Seal all hydraulic connections with a high quality, nonhardening pipe thread sealant. Always avoid contaminating the hydraulic system as it can have an adverse affect on the function of the valve.

1. Connect a six foot 3/8 I.D. hose to the "PUMP" port on the 9629A valve and to the pump valve port "A".
2. With the appropriate fittings, install a 0-10,000 PSI gauge to a six foot 3/8 I.D. hose. Connect this hose to the "CYLINDER BASE" port of the 9629A valve and to the bottom (extend) port of the cylinder.
3. With the appropriate fittings, install a 0-2,500 or 0-5,000 PSI gauge (this is preferred but if not available use a 10,000 PSI gauge) to a six foot 3/8 I.D. hose. Connect this hose to the "PILOT" port or tee on the 9629A valve and to the pump valve port "B".
4. Connect a six foot 3/8 I.D. hose to the "PILOT" port or tee on the 9629A valve and to the top (retract) port of the cylinder.



B. Requirements of Operation

Use 215SUS hydraulic oil at ambient temperature. Set the power pump external pressure regulator at 10,200/10,700 PSI. Use 10,000 PSI working pressure rated components (except for the 2,500 or 5,000 PSI gauge). **Note: The 9629A valve is not recommended for use with pumps having less than 15 CIPM output at 10,000 PSI.**

1. Extend hydraulic cylinder. Check speed to verify free flow through valve assembly. Build to 9,000 PSI and stabilize by allowing to set for one minute. Check for leakage with pump off or pump manual valve in center position.
2. Place valve in retract position and set pilot operated check valve cracking pressure to 1,400/1,500 PSI with 9,000 PSI applied at cylinder base port.
3. Retract cylinder fully. Set relief valve to 1,600/1,700 PSI. Extend and retract cylinder, and time retractions to ensure that the metering valve portion is functioning normally. Example: Retract time for an RD256 is 120 to 180 seconds with no load and 1,600/1,700 PSI applied to retract port.
4. Repeat steps 1 through 3 three times to check for normal valve function. Compare times. Check for any leaks and unusual noise, motion, etc. Note: Extend times will vary depending on the size of the pump.