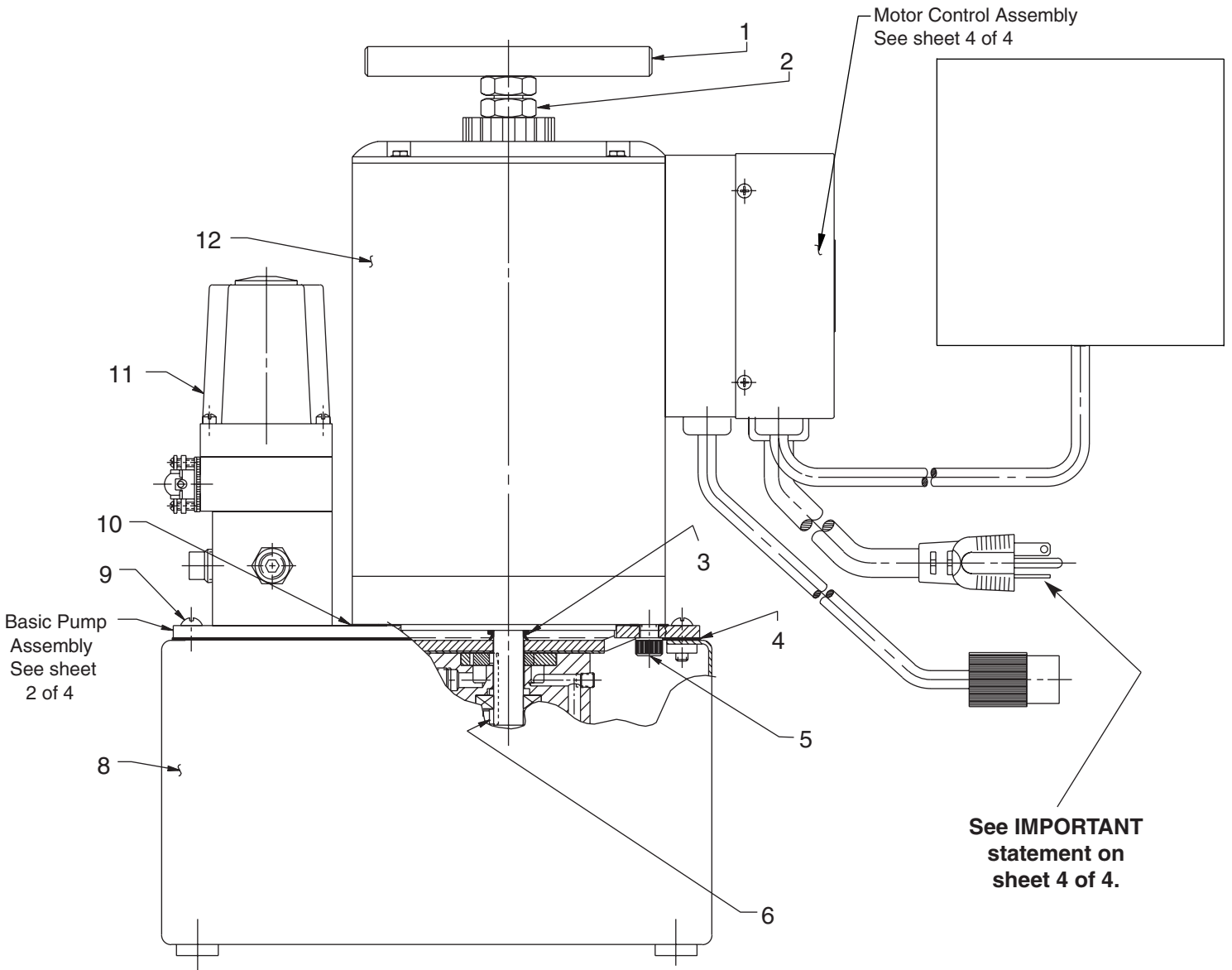
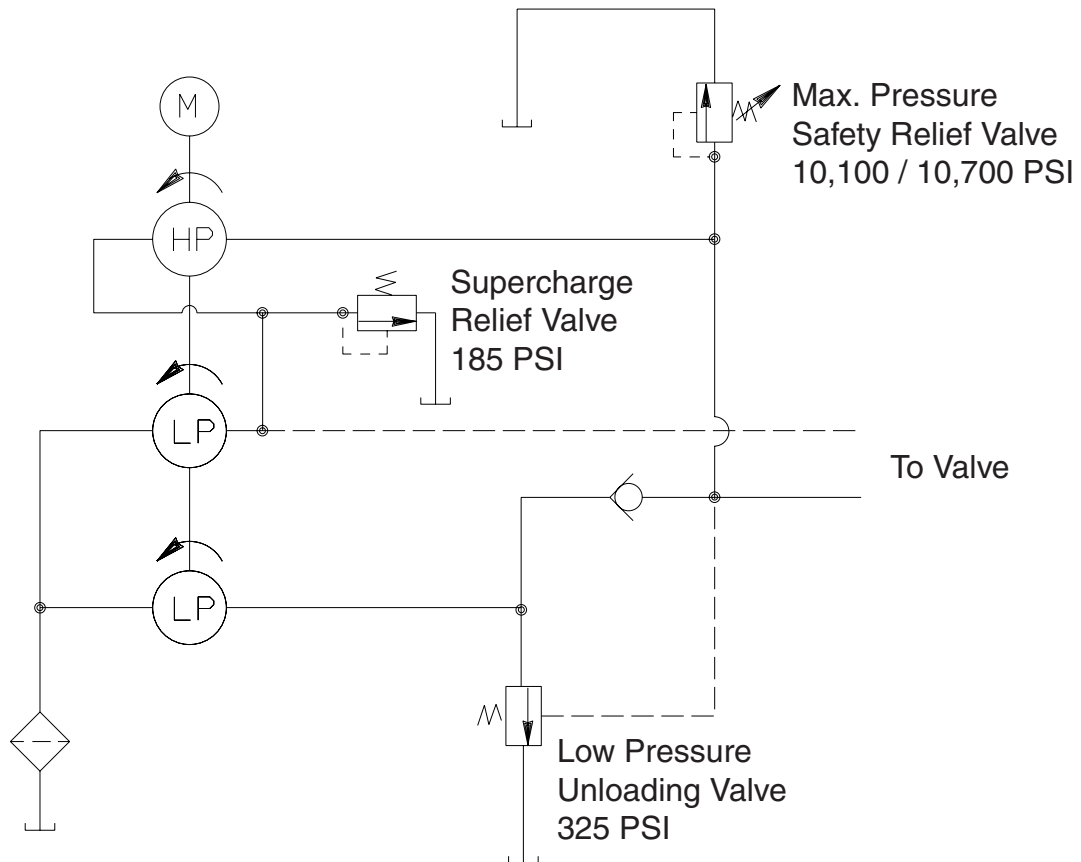


## ELECTRIC TWO-STAGE HYDRAULIC PUMP



Item No.	Part No.	No. Req'd	Description
1	203146	1	T-handle
2	10394	1	Hex Nut
3	213674	1	V-ring
4	40164	1	Gasket
5	10050	4	Cap Screw (3/8-16 X 1" Lg.; Torque to 90/100 in. lbs.)
6	214097	1	Key
8	40063RE3	1	Reservoir
9	10177	10	Machine Screw (1/4-20 UNC X 3/4 Lg.)
10	307425	1	Motor Base Gasket
11	42621	1	Solenoid Valve
12	58053RE3	1	Electric Motor (For P124-10)
	53104RE3	1	Electric Motor (For P124-50-220)

### HYDRAULIC SCHEMATIC



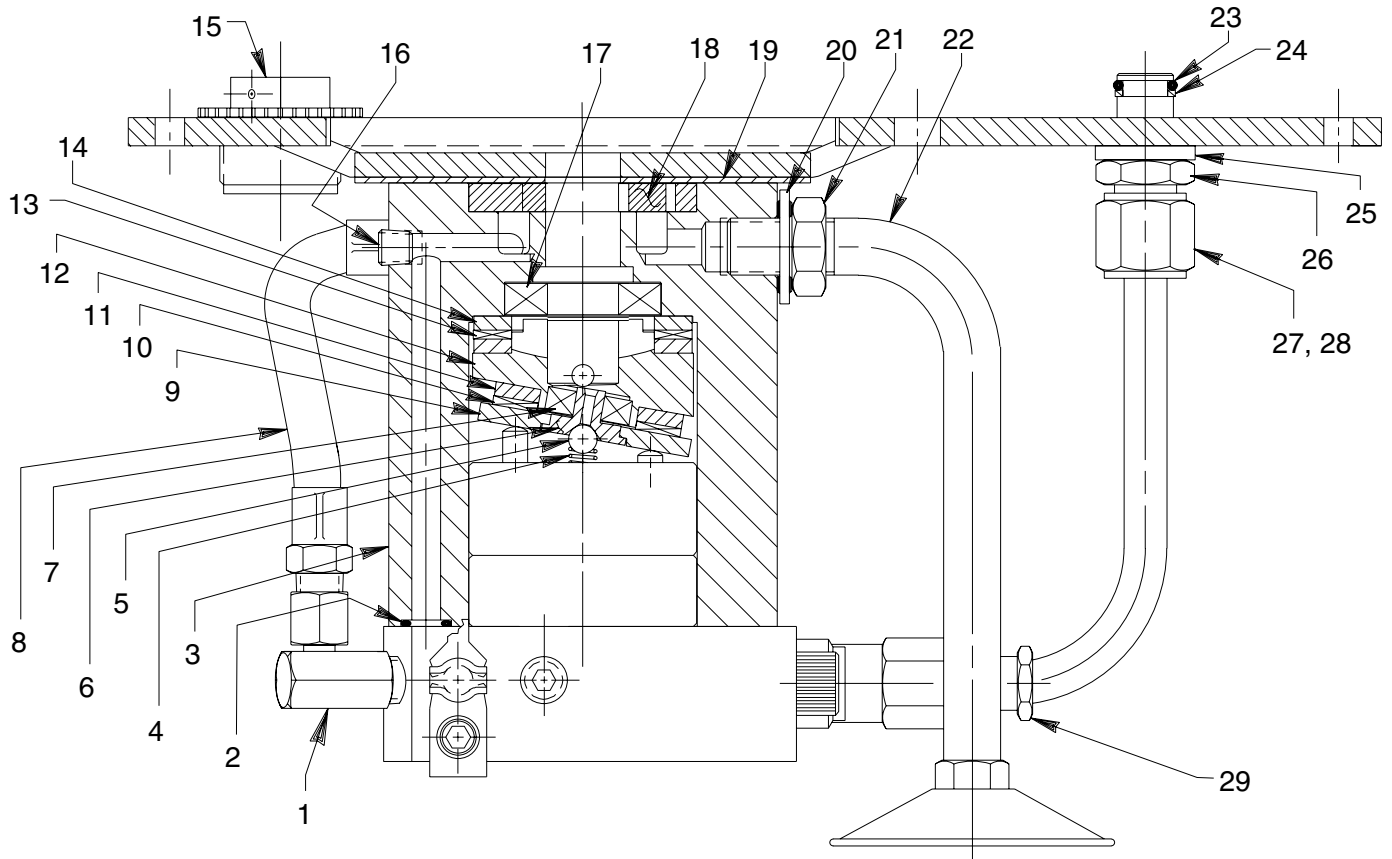
Refer to any operating instructions included with this product for detailed information about operation, testing, disassembly, reassembly, and preventive maintenance.

Items found in this parts list have been carefully tested and selected. **Therefore: Use only genuine Power Team replacement parts!**

Additional questions can be directed to our Technical Services Department.

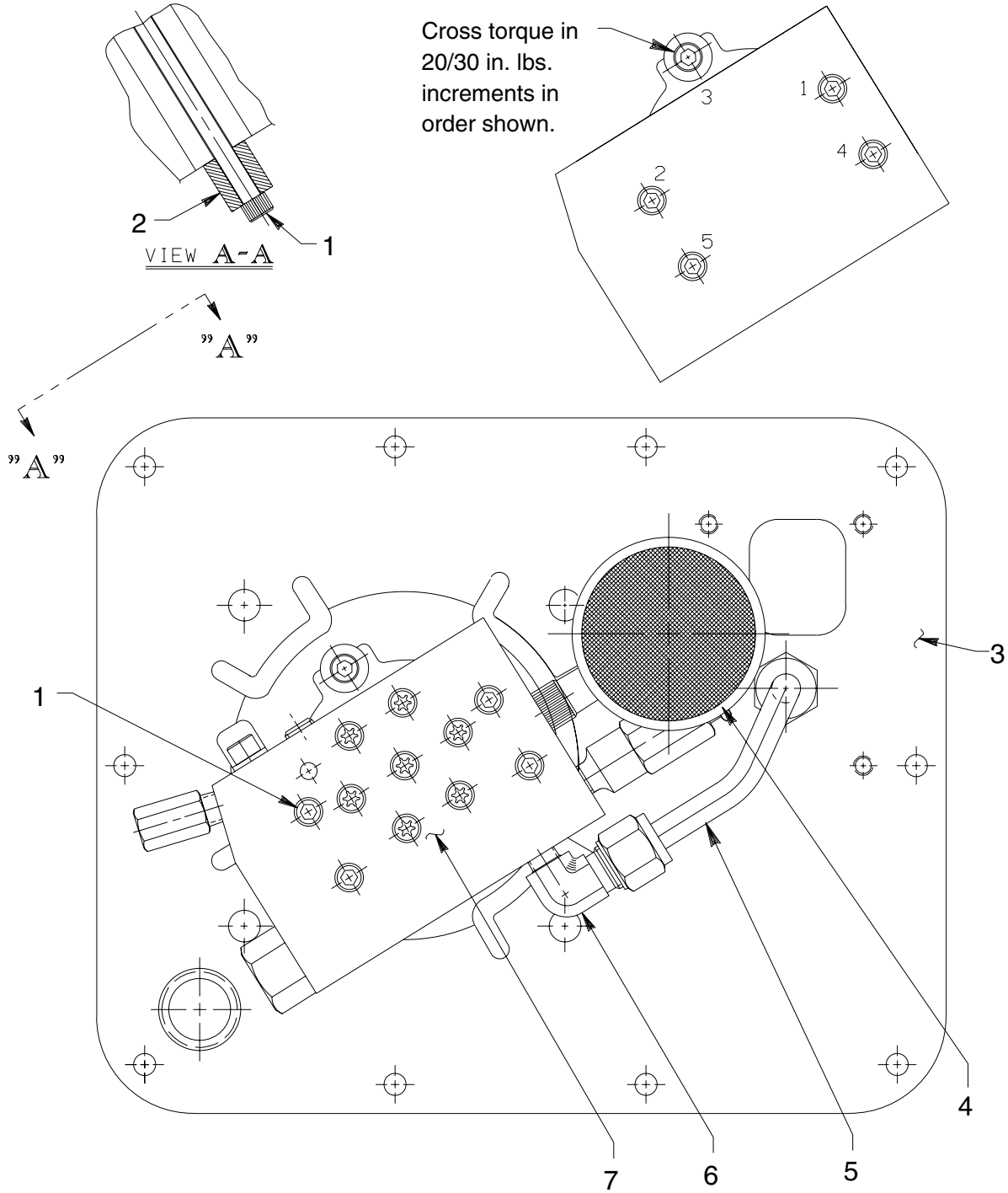
Note: Removed decal (Item #7) at last revision(s) made to this form.

### BASIC PUMP ASSEMBLY SIDE VIEW



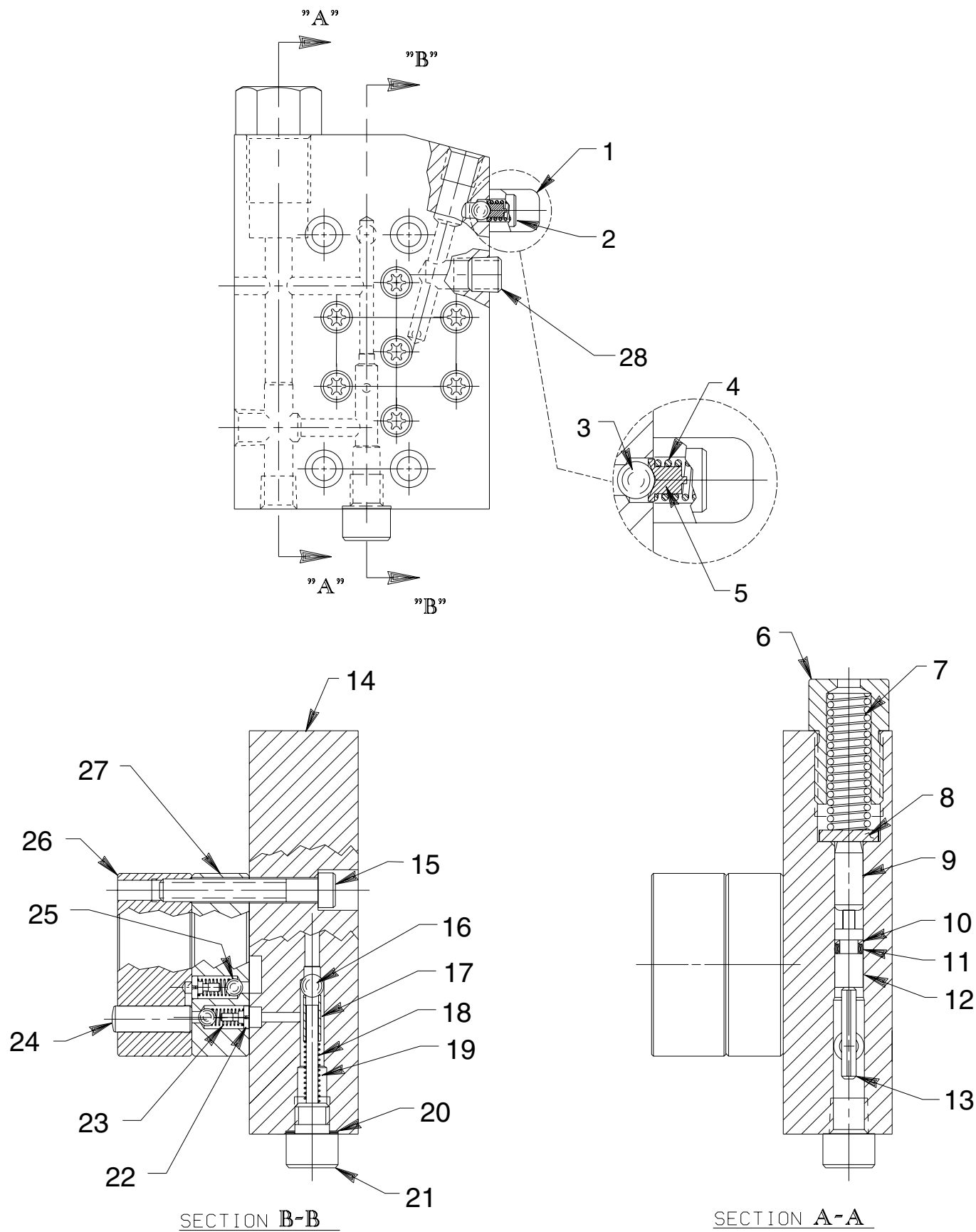
Item No.	Part No.	No. Req'd	Description	Item No.	Part No.	No. Req'd	Description
1	14440	1	Straight Fitting	19	307296	1	Wear Plate (NOTE: Install with metal stamped side of plate toward motor. Disregard stamped note.)
2	10267	1	O-ring (7/16 x 5/16 x 1/16)	20	213709	1	Washer Seal (Turn on, do not push on)
3	58338	1	Pump Body	21	10390	1	Nut (1/2-20 UNF)
4	16320	1	Compression Spring (1/4 O.D. x 3/4 Lg.)	22	213686	1	Intake Tube
5	10375	1	Steel Ball (1/4 dia.)	23	10268	1	O-ring (1/2 x 3/8 x 1/16)
6	23547	1	Top Plate Bearing	24	11863	1	Backup Washer (1/2 x 3/8 x 1/16)
7	11814	1	Ball Bearing	25	21484	1	Washer
8	304819	1	Hose Assembly	26	214882	1	Valve Connector (Note: Torque valve connector to 20/30 ft. lbs. into cover plate. Hold valve connector and torque tube nut [item 29] to 40/50 ft. lbs.)
9	23548	1	Top Plate	27	10430	1	Tube Sleeve
10	15431	1	Needle Thrust Bearing	28	10431	1	Tube Nut
11	15432	1	Needle Thrust Bearing Race	29	21278	1	Relief Valve (Set at 10,100 / 10,700 PSI)
12	350487	1	Angle Plate				
13	11228	1	Needle Thrust Bearing				
14	11227	2	Needle Thrust Bearing Race				
15	213706	1	Filler Cap				
16	11084	1	Pipe Plug (1/16 NPTF; Torque to 35/45 in. lbs. oiled)				
17	15695	1	Ball Bearing				
18	15693	1	Gerotor Set				

### BASIC PUMP ASSEMBLY-BOTTOM VIEW



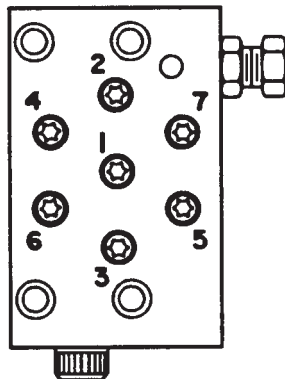
Item No.	Part No.	No. Req'd	Description
1	15642	5	Cap Screw (1/4-20 UNC X 5" Lg.; Torque to 55/65 in. lbs.)
2	214720	1	Spacer
3	61566BK2	1	Cover Plate
4	29682	1	Filter
5	350596	1	Oil Tube
6	10475	1	Tube Elbow
7	420632	1	High Pressure Pump (See sheet 3 of 4)

# HIGH PRESSURE PUMP ASSEMBLY



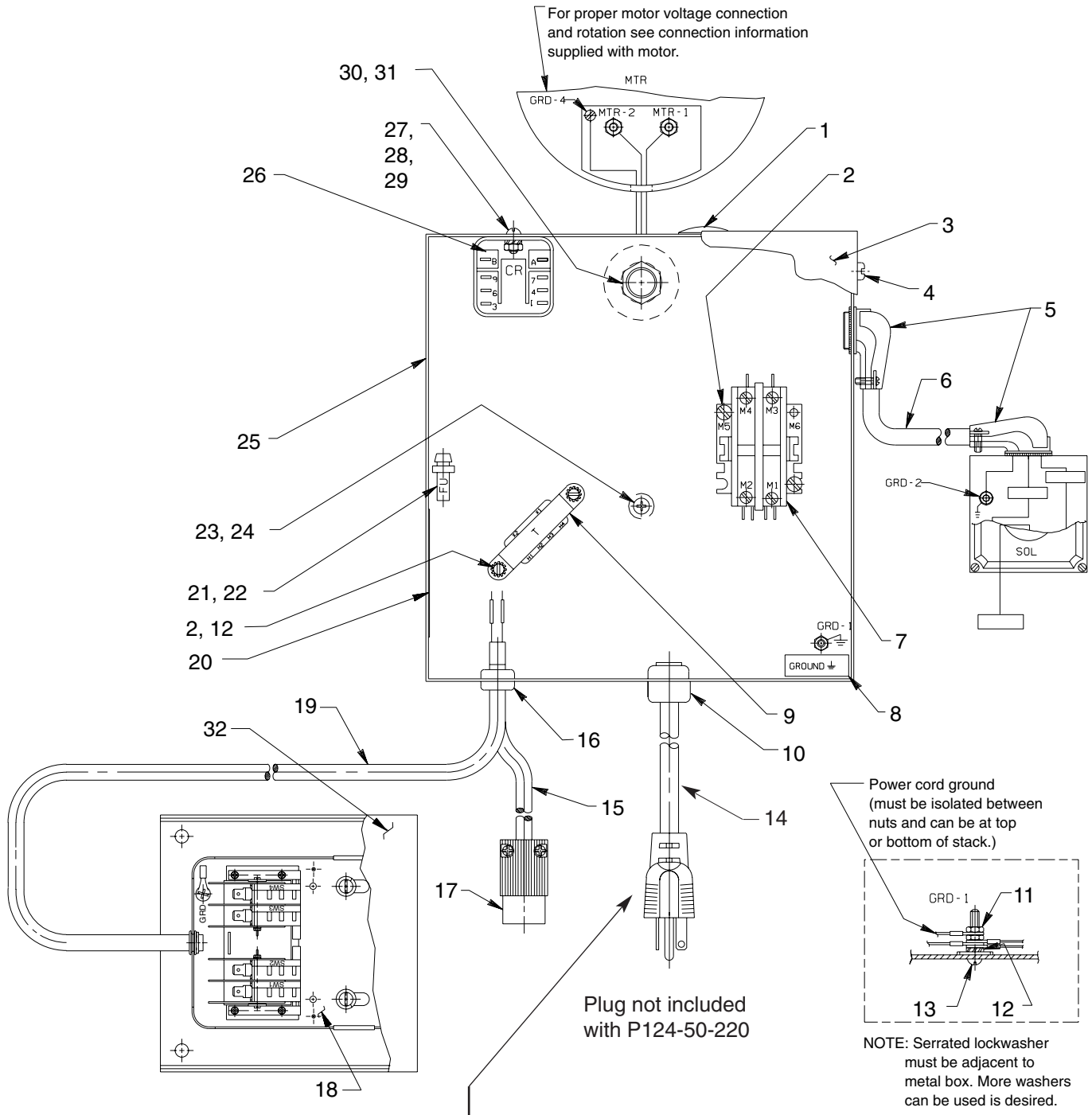
<b>Item No.</b>	<b>Part No.</b>	<b>No. Req'd</b>	<b>Description</b>
1	350577	1	Spring Retainer
2	10002	1	Cap Screw (1/4-20 UNC X 3/8 Lg.)
3	10374	1	Steel Ball (7/32 Dia.)
4	15691	1	Compression Spring (1/4 O.D. X 5/8 Lg.)
5	200796	1	Adapter
6	308430	1	Unloading Valve Fitting
7	208698	1	Compression Spring (5/16 O.D. x 1 15/16 Lg.)
8	214692	1	Disc
9	250800	1	Dowel Pin
10	15174	1	Backup Washer (5/16 X 3/16 X 3/64)
11	10265	1	O-ring (5/16 X 3/16 X 1/16, -008)
12	250954	1	Piston
13	11566	1	Pin (Note: Place loose in body [Item#14].)
14	64343	1	End Plate
15	16747	7	Screw (1/4-28 UNF X 1-3/4 Lg.; See illustration below)
16	10375	2	Steel Ball (1/4 dia.)
17	201998	1	Sleeve
18	14431	1	Compression Spring (3/16 O.D. X 3/4 Lg.)
19	12571	1	Pin
20	12042	1	Copper Washer (9/16 X 3/8 X 1/32)
21	29690	1	Screw
22	24549	4	Spring Guide
23	10445	4	Compression Spring (5/32 O.D. X 3/4 Lg.)
24	20775	2	Piston
25	12223	4	Ball (3/16 Dia.)
26	41006	1	Barrel
27	41007	1	Valve Head
28	10427	1	Plug (1/8 NPTF)

### **BOLT TIGHTENING SEQUENCE**

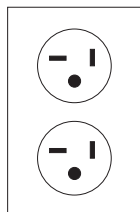
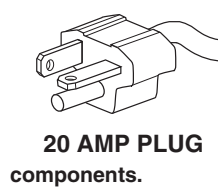


**NOTE: Assemble in sequence shown. Lubricate under head on threads. Torque to 170 in. lbs.)**

# MOTOR CONTROL ASSEMBLY



**IMPORTANT:** In order to meet certain electrical safety requirements, pumps in this series wired for 115 Volt AC 60 Hz are required to contain a 20 AMP plug as shown below. Plug unit into the appropriate 20 AMP electrical female receptacle. Do not modify the pump power cord or plug in any way -



doing so will VOID the product warranty on any electrical

# Parts List, Form No. 101331, Back sheet 4 of 4

Item No.	Part No.	No. Req'd	Description	Item No.	Part No.	No. Req'd	Description
1	17782	1	Snap Plug	19	13336	6.5 ft.	Electrical Cable (18/5 SJTO)
2	11539	4	Machine Screw (#10-24 X 1/4 Lg.)	20	250440	1	Decal
3	43126RE3	1	Control Box Cover	21	250442	1	Fuse (1.25 amp)
4	14812	4	Tap Screw (#8-18 X 3/8 Lg.)	22	16887	1	Fuse Holder
5	11144	2	90° Elbow Connector	23	13532	1	Screw
6	12293	2.5 ft.	Electrical Cable (16/3 SJTO)	24	206857	1	Plain Washer (Special)
7	420718-4	1	Contactor (2-pole)	25	51218RE3	1	Electrical Control Box
8	205189	1	Ground Decal	26	39092	1	Relay
9	305665	1	Transformer	27	10159	2	Screw (#6-32 UNC X 5/16 Lg.)
11	10197	2	Nut (#10-24 UNC)	28	10195	2	Nut (#6-32 UNC)
10	210112	1	Strain Relief Bushing	29	15906	2	Lockwasher (#6 External Tooth)
12	11108	3	Lockwasher (#10 External Tooth)	30	11202	1	Nipple
13	11856	1	Machine Screw (#10-24 X 1" Lg.)	31	212434	1	Washer
14	350155	1	Cord Set (For P124-10)	32	16339	1	Foot Switch Guard (Assemble switch to guard with hardware supplied.)
	308752	8 ft.	Electrical Cable (14/3 SJTO; For P124-50-220)				
15	11423	2 ft.	Electrical Cable (18/2 SJTO)				
16	15993	2	Strain Relief Bushing				
17	250895	1	Connector				
18	216209	1	Foot Switch				

**PARTS INCLUDED BUT NOT SHOWN**  
 200188 1 Warning Decal

Note: Shaded areas reflect last revision(s) made to this form.

## ELECTRIC SCHEMATIC

115/220 Volt, 50/60 Hz.; Single Phase

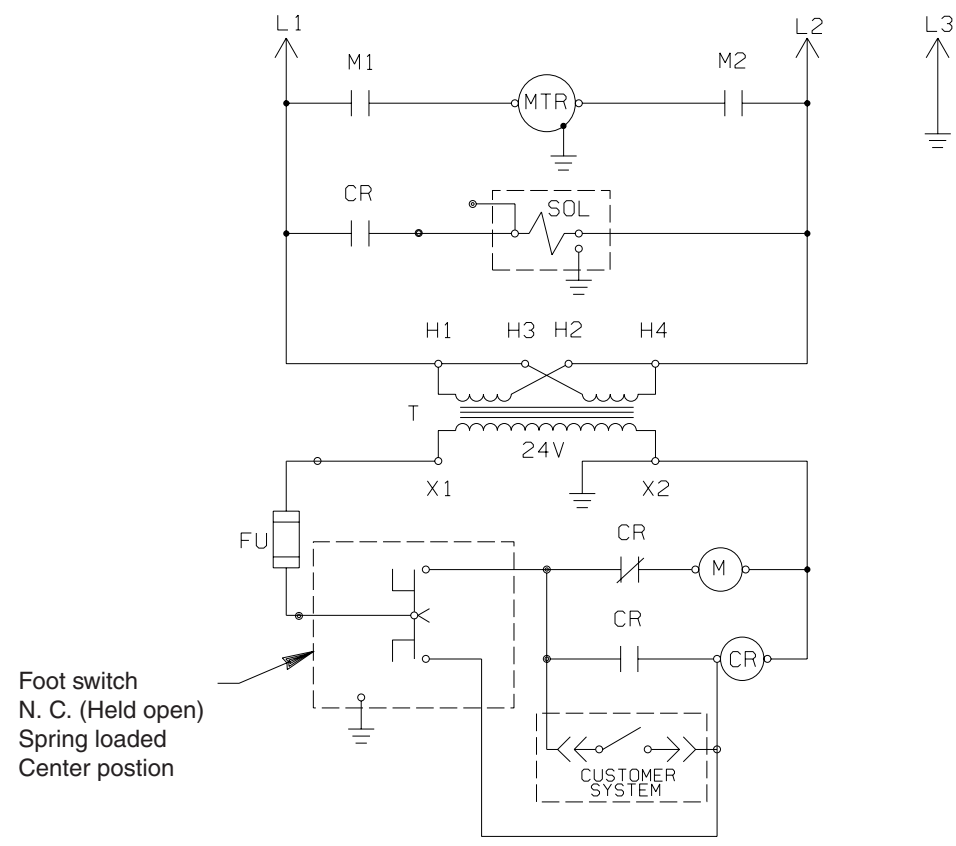


**WARNING**

To help avoid personal injury, all electrical work must be done by a qualified electrician.

### North American & International Color Codes

Conductors	North American	International
Line .....	Black.....	Brown
Neutral .....	White .....	Blue
Ground .....	Green .....	Green/Yellow



Transformer connections are as shown for 115 V., 60 Hz.

For 220 V., 50 Hz. units, transformer connections to be as follows:

- H1 to L1
- H2 to H3
- H4 to L2