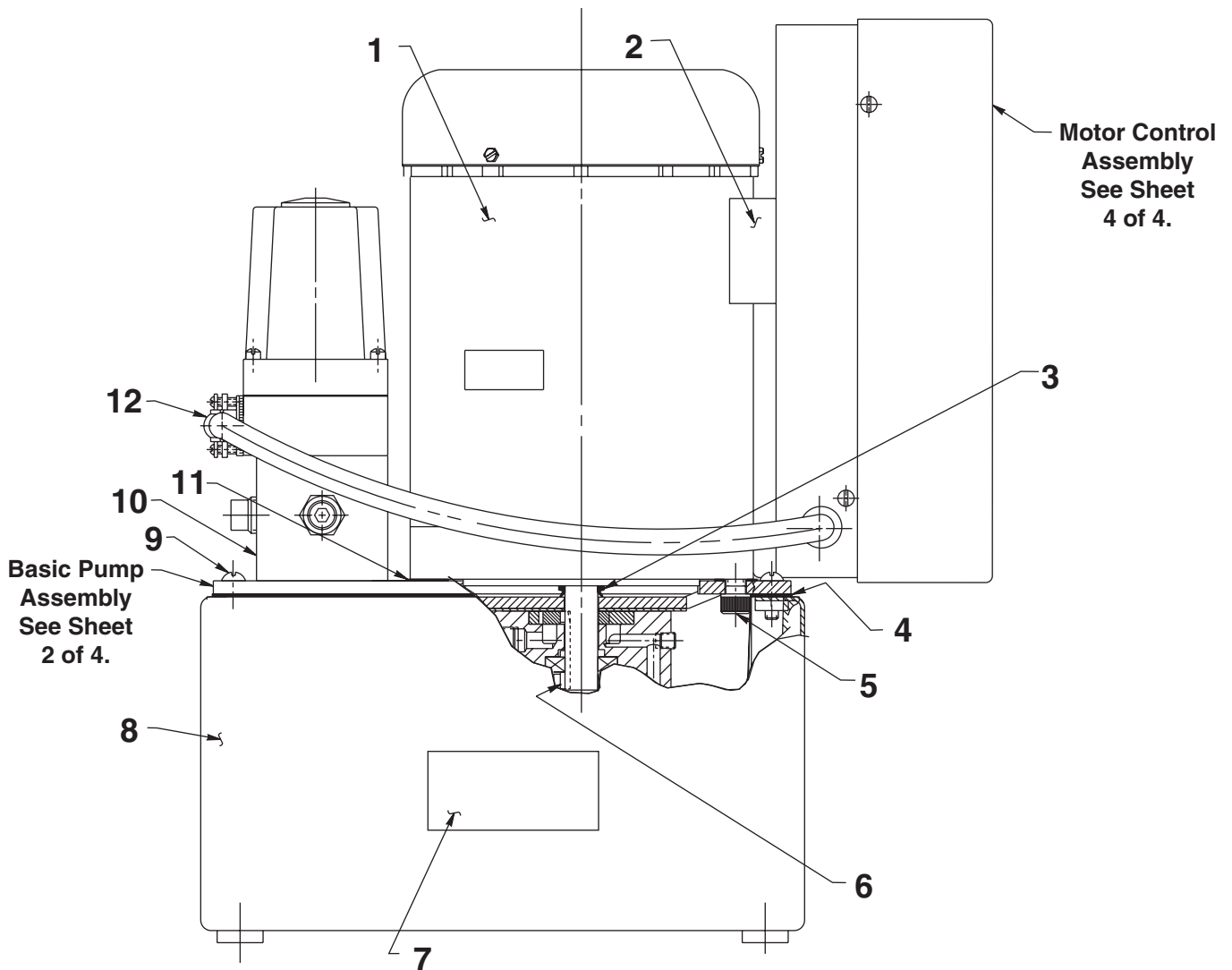


**ELECTRIC
 TWO-STAGE HYDRAULIC PUMP**



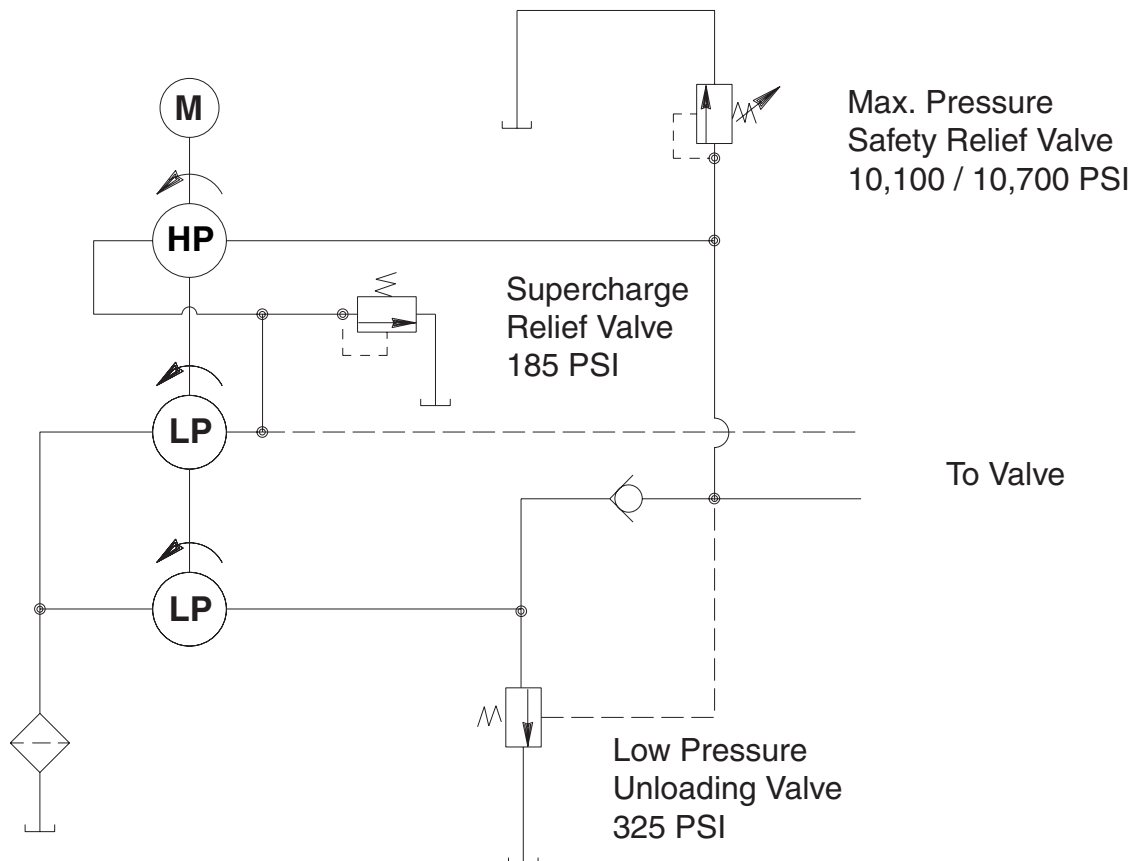
Parts List, Form No. 101337, Back sheet 1 of 4

Item No.	Part No.	No. Req'd	Description
1	53497RE3	1	Electric Motor (220/440 V.; 50 Hz.)
2	420640	1	Mounting Adapter (Note: Remove conduit box and gasket from motor.)
3	213674	1	V-ring
4	40164	1	Reservoir Gasket
5	10050	4	Cap Screw (3/8-16 X 1" Lg.; Torque to 90/100 in. lbs.)
6	214097	1	Key
7	211962	2	Trade Name Decal
8	40063RE3	1	Reservoir (2 gallon)
9	10177	10	Machine Screw (1/4-20 UNC X 3/4 Lg.)
10	44084	1	Solenoid Valve (See Form No. 100445)
11	307425	1	Motor Base Gasket
12	11144	1	Conduit Connector

PARTS INCLUDED BUT NOT SHOWN

12316	2	Tapping Screw (10-24 x 1/2 Lg.; Attaches mounting adapter [Item #2] to motor.)
-------	---	--

HYDRAULIC SCHEMATIC

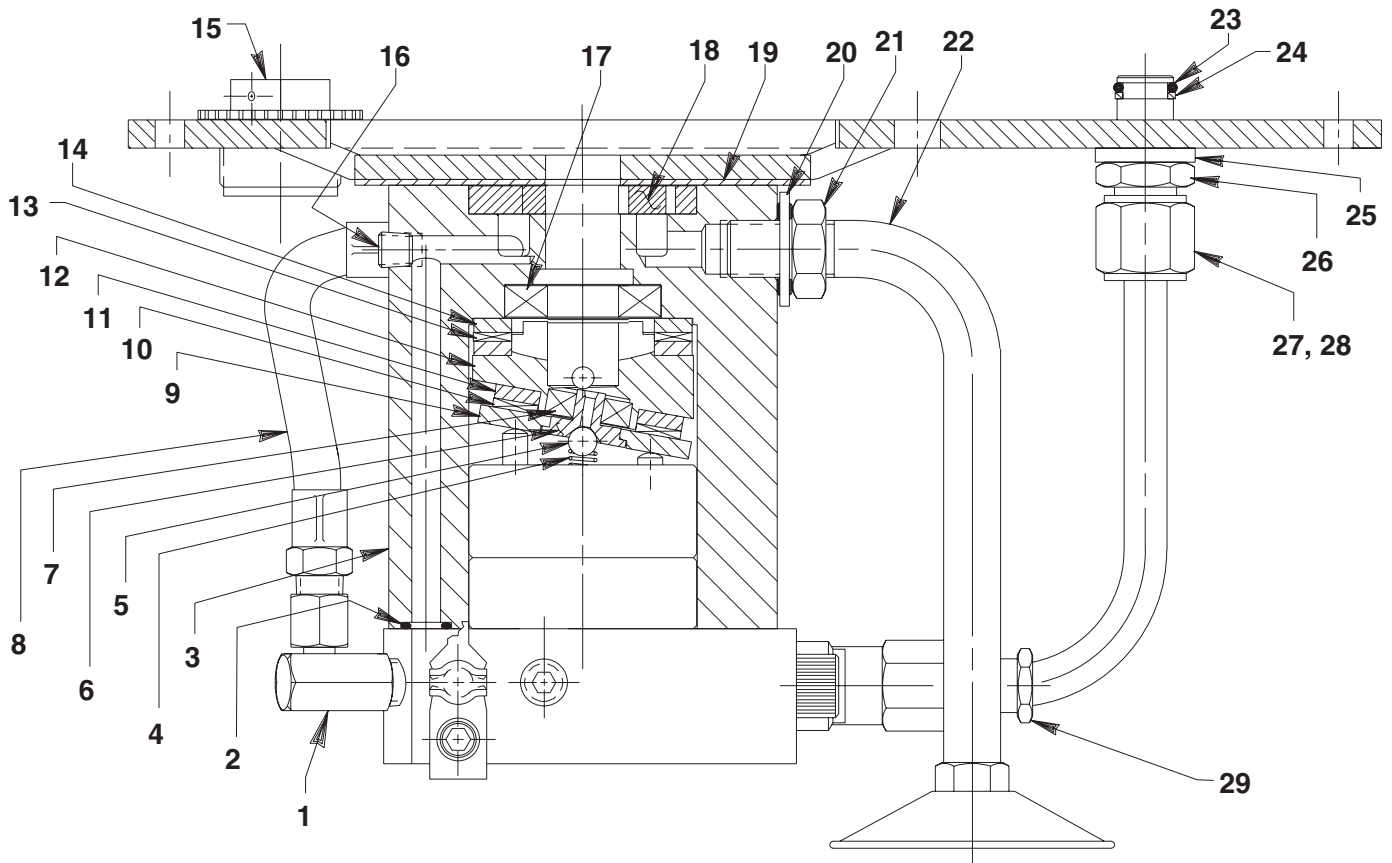


Refer to any operating instructions included with this product for detailed information about operation, testing, disassembly, reassembly, and preventive maintenance.

Items found in this parts list have been carefully tested and selected. **Therefore: Use only genuine Power Team replacement parts!**

Additional questions can be directed to our Technical Services Department.

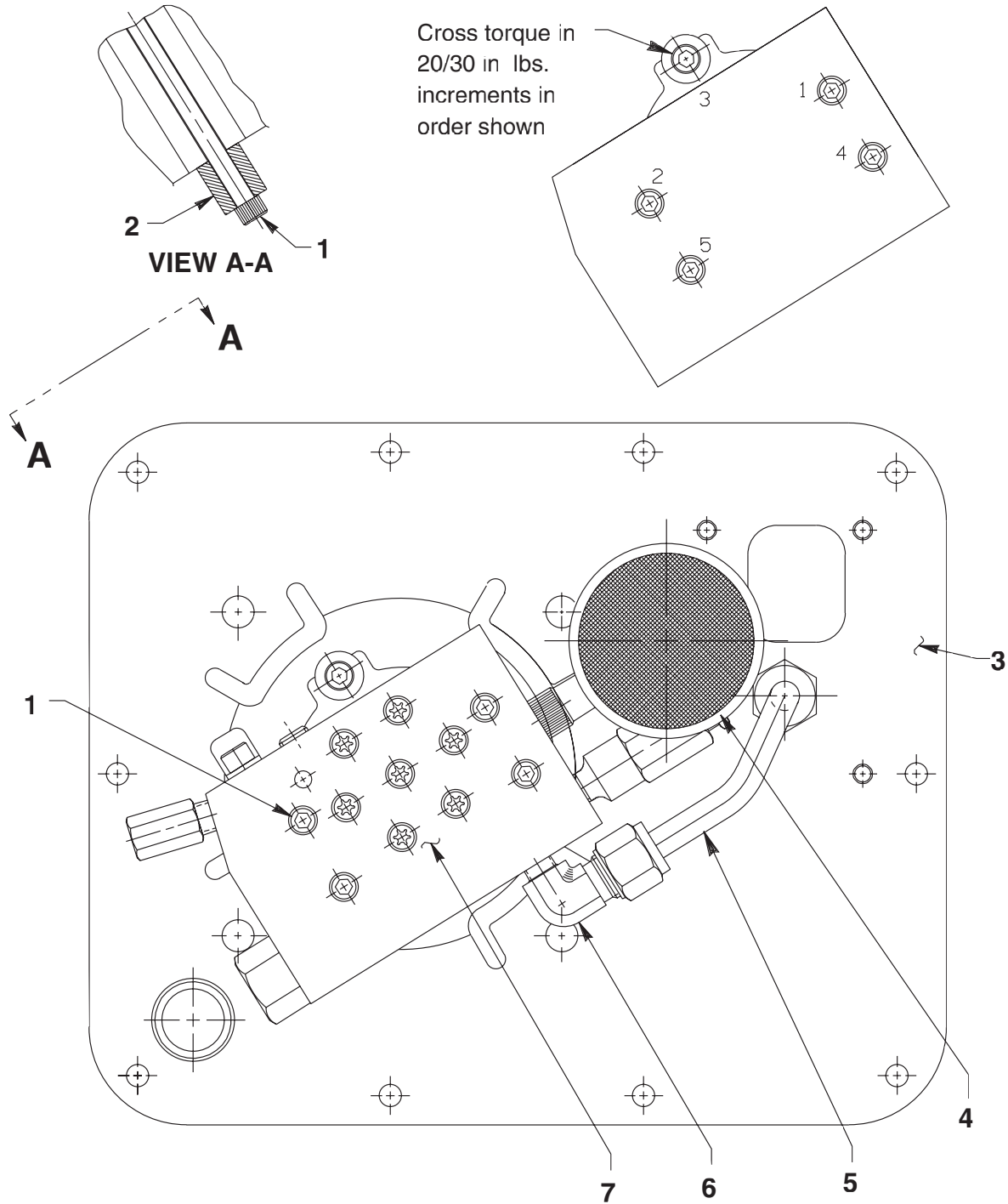
BASIC PUMP ASSEMBLY SIDE VIEW



Item No.	Part No.	No. Req'd	Description
1	14440	1	Straight Fitting
2	10267	1	O-ring (7/16 x 5/16 x 1/16)
3	58338	1	Pump Body
4	16320	1	Compression Spring (1/4 O.D. x 3/4 Lg.)
5	10375	1	Steel Ball (1/4 dia.)
6	23547	1	Top Plate Bearing
7	11814	1	Ball Bearing
8	304819	1	Hose Assembly
9	23548	1	Top Plate
10	15431	1	Needle Thrust Bearing
11	15432	1	Needle Thrust Bearing Race
12	350487	1	Angle Plate
13	11228	1	Needle Thrust Bearing
14	11227	2	Needle Thrust Bearing Race
15	213706	1	Filler Cap
16	11084	1	Pipe Plug (1/16 NPTF)
17	15695	1	Ball Bearing

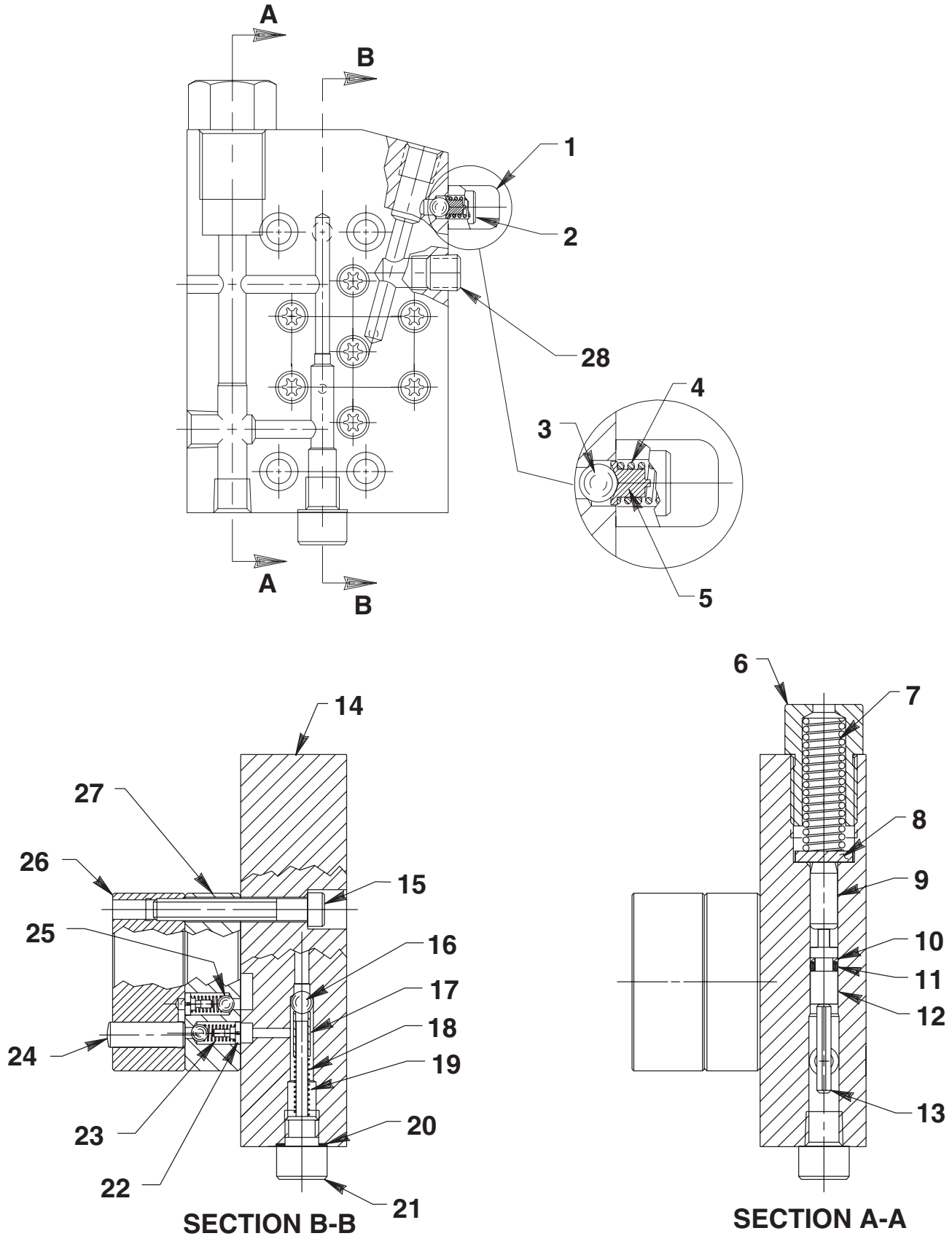
Item No.	Part No.	No. Req'd	Description
18	15693	1	Gerotor Set
19	307296	1	Wear Plate (NOTE: Install with metal stamped side of plate toward motor. Disregard stamped note.)
20	213709	1	Washer Seal (Turn on, do not push on)
21	10390	1	Nut (1/2-20 UNF)
22	213686	1	Intake Tube
23	10268	1	O-ring (1/2 x 3/8 x 1/16)
24	11863	1	Backup Washer (1/2 x 3/8 x 1/16)
25	21484	1	Washer
26	214882	1	Valve Connector (Note: The torque between the valve connector and the cover plate shall be 30 ft. lbs. max.)
27	10430	1	Tube Sleeve
28	10431	1	Tube Nut
29	21278	1	Relief Valve (Set at 10,100 / 10,700 PSI)

BASIC PUMP ASSEMBLY BOTTOM VIEW



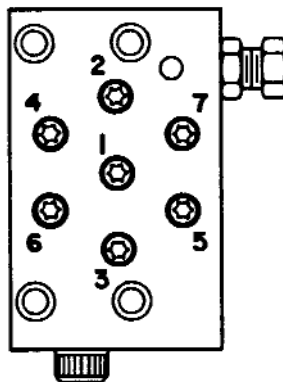
Item No.	Part No.	No. Req'd	Description
1	15642	5	Cap Screw (1/4-20 UNC X 5" Lg.; Torque to 55/65 in. lbs.)
2	214720	1	Spacer
3	61566BK2	1	Cover Plate
4	29682	1	Filter
5	350596	1	Oil Tube
6	10475	1	Tube Elbow
7	420632	1	High Pressure Pump (See sheet 3 of 4)

HIGH PRESSURE PUMP ASSEMBLY



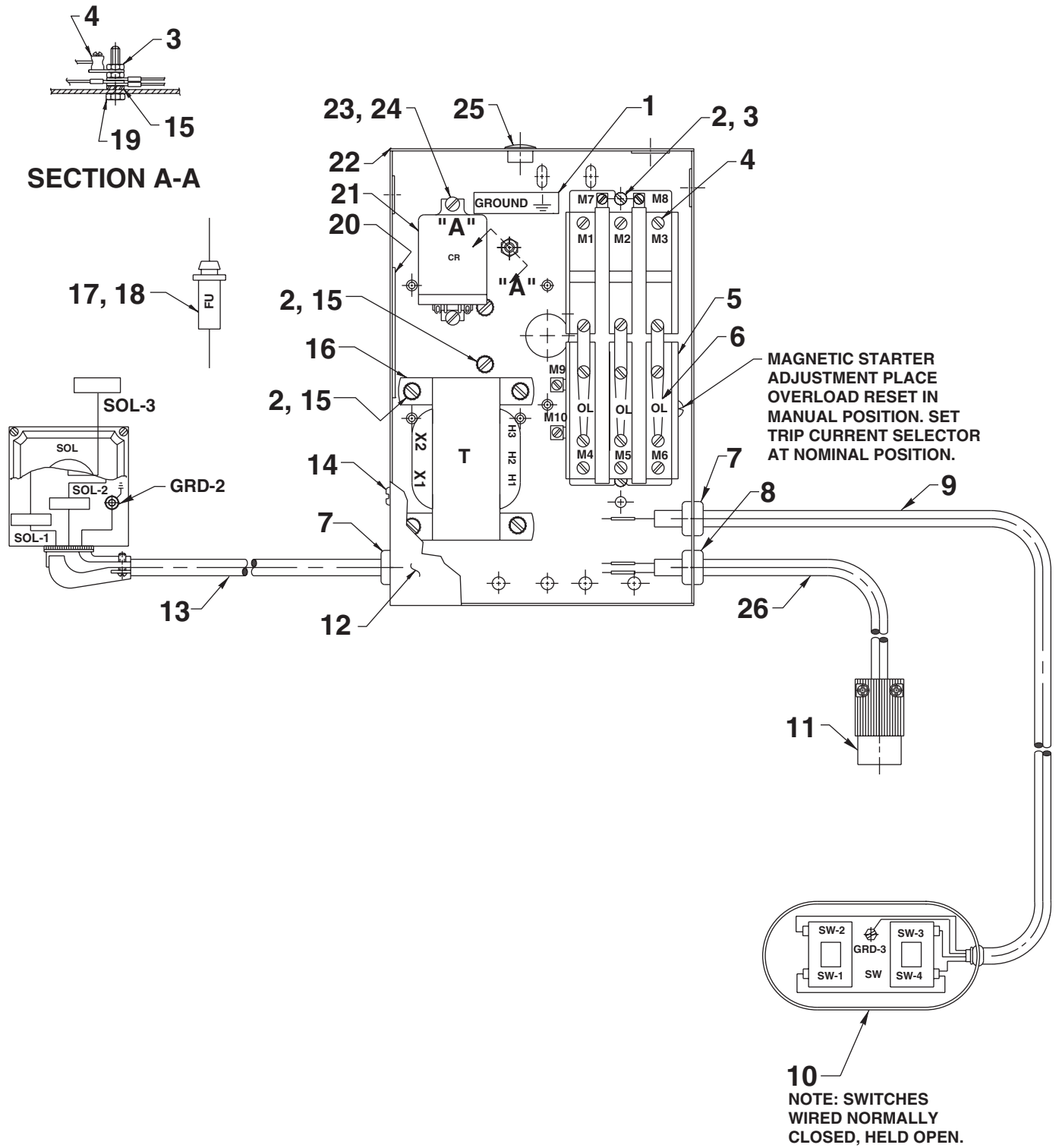
Item No.	Part No.	No. Req'd	Description
1	350577	1	Spring Retainer
2	10002	1	Cap Screw (1/4-20 UNC X 3/8 Lg.)
3	10374	1	Steel Ball (7/32 Dia.)
4	15691	1	Compression Spring (1/4 O.D. X 5/8 Lg.)
5	200796	1	Adapter
6	308430	1	Unloading Valve Fitting
7	214694	1	Compression Spring (5/16 O.D. x 1-15/16" Lg.)
8	214692	1	Disc
9	250800	1	Dowel Pin
10	15174	1	Backup Washer (5/16 X 3/16 X 3/64)
11	10265	1	O-ring (5/16 X 3/16 X 1/16)
12	250954	1	Piston
13	11566	1	Pin (Note: Place loose in body [Item#14].)
14	64343	1	End Plate
15	16747	7	Screw (1/4-28 UNF X 1-3/4 Lg.; See illustration below)
16	10375	2	Steel Ball (1/4 dia.)
17	201998	1	Sleeve
18	14431	1	Compression Spring (3/16 O.D. X 3/4 Lg.)
19	12571	1	Pin
20	12042	1	Copper Washer (9/16 X 3/8 X 1/32)
21	29690	1	Screw
22	24549	4	Spring Guide
23	10445	4	Compression Spring (5/32 O.D. X 3/4 Lg.)
24	20775	2	Piston
25	12223	4	Ball (3/16 Dia.)
26	41006	1	Barrel
27	41007	1	Valve Head
28	10427	1	Plug (1/8 NPTF)

BOLT TIGHTENING SEQUENCE



NOTE: Assemble in sequence shown. Lubricate under head on threads. Torque to 170 in. lbs.

MOTOR CONTROL ASSEMBLY



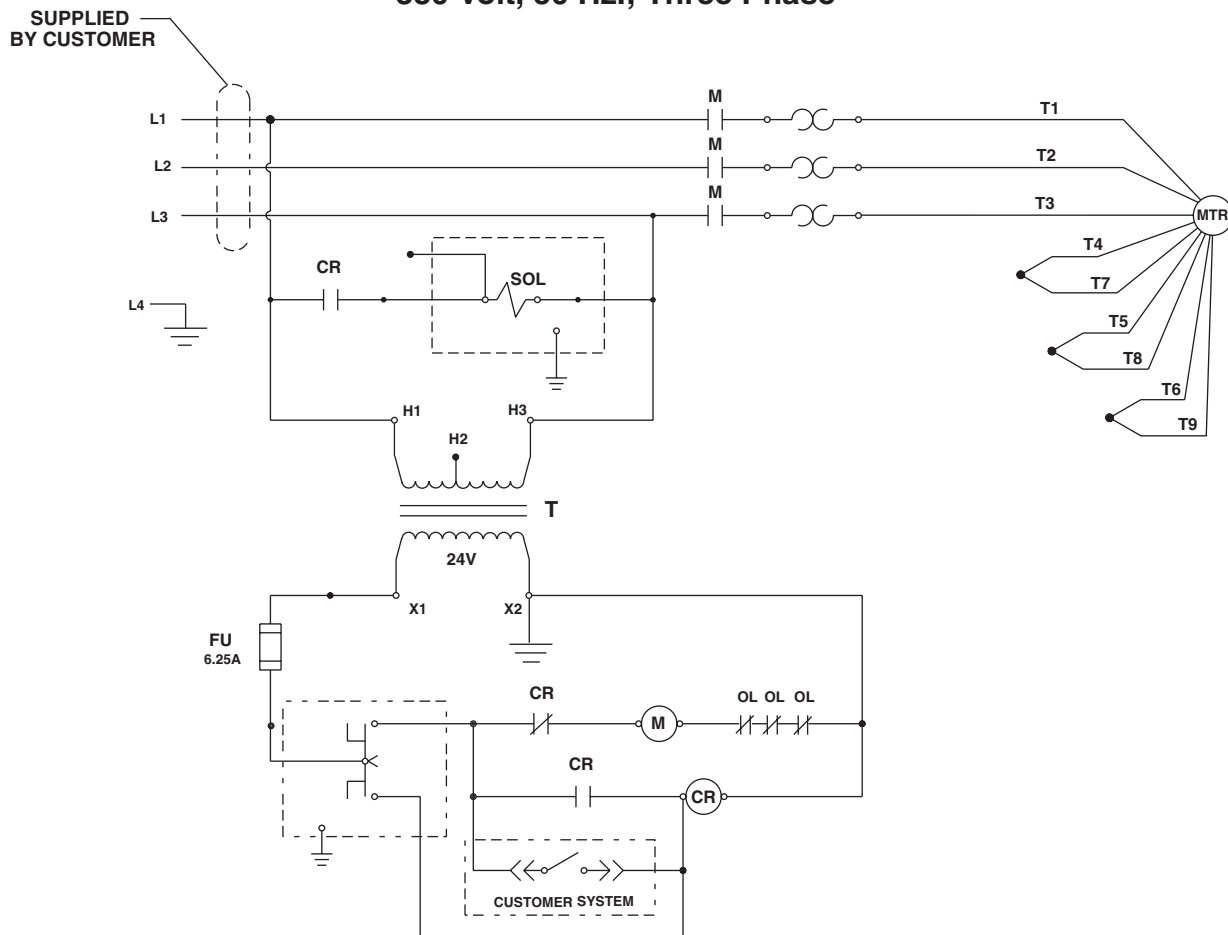
Parts List, Form No. 101337, Back sheet 4 of 4

Item No.	Part No.	No. Req'd	Description
1	205189	1	Ground Decal
2	10164	9	Screw (#10-24 UNC X 3/8 Lg.)
3	10197	4	Hex Nut (10-24 UNC)
4	205420	4	Lug Connector (Note: Install on top of existing ring tongues at M1, M2, and M3 locations.)
5	16639-4	1	Relay Starter
6	16641-44	3	Heater Element
7	15993	2	Strain Relief Bushing
8	215857	1	Strain Relief Bushing
9	11391	6.5 ft.	Electrical Cable (18/4 SJTO)
10	17627	1	Foot Switch (Less cord)
11	16862	1	Receptacle
12	52357RE3	1	Control Box Cover
13	12293	2 ft.	Electrical Cable (16/3 SJTO)
14	14812	4	Tapping Screw (#8-18 X 3/8 Lg.)

Item No.	Part No.	No. Req'd	Description
15	11188	8	Washer
16	39750	1	Transformer
17	250176	1	Fuse (6.25 Amp)
18	16887	1	Fuse Holder
19	104484	1	Screw (10-24 UNC X 3/4 Lg.)
20	250271	1	Warning Decal
21	39092	1	Relay
22	420666RE3	1	Electrical Control Box
23	10159	2	Screw (#6-32 UNC X 5/16 Lg.)
24	15906	2	Washer
25	17782	1	Snap Plug
26	11423	2 ft.	Electrical Cable (18/2 SJTO)

PARTS INCLUDED BUT NOT SHOWN
200188 1 Warning/Important Decal

ELECTRIC SCHEMATIC 380 Volt, 50 Hz.; Three Phase



WARNING

To help avoid personal injury, all electrical work must be done by a qualified electrician.