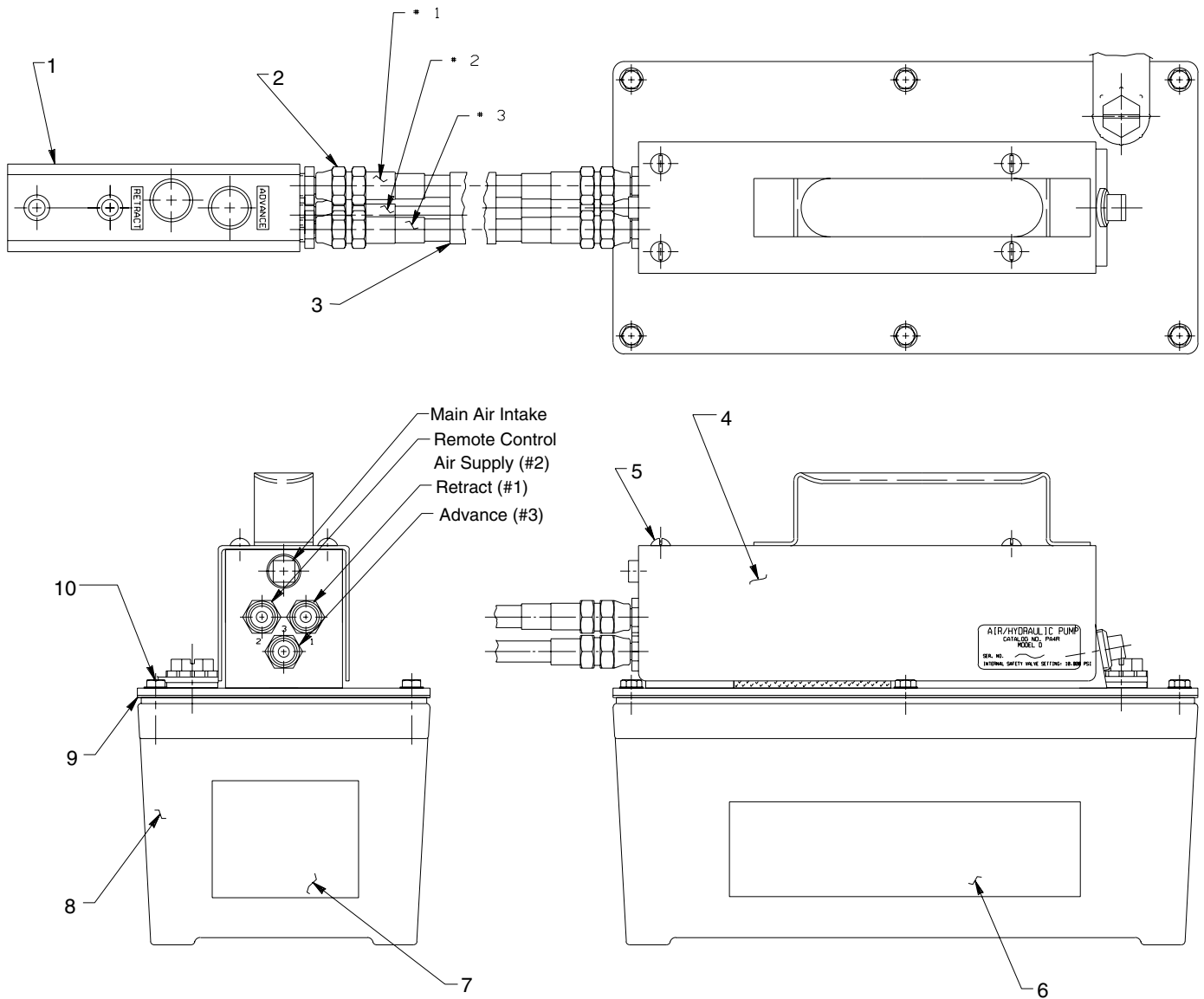


Parts List for:

4021
52431
PA4R
Y13-REM-HKP
Y13-REM-PF

MODEL D
AIR HYDRAULIC PUMP
Max. Capacity: 10,000 PSI

GENERAL ASSEMBLY



Parts List, Form No. 101339, Back sheet 1 of 3

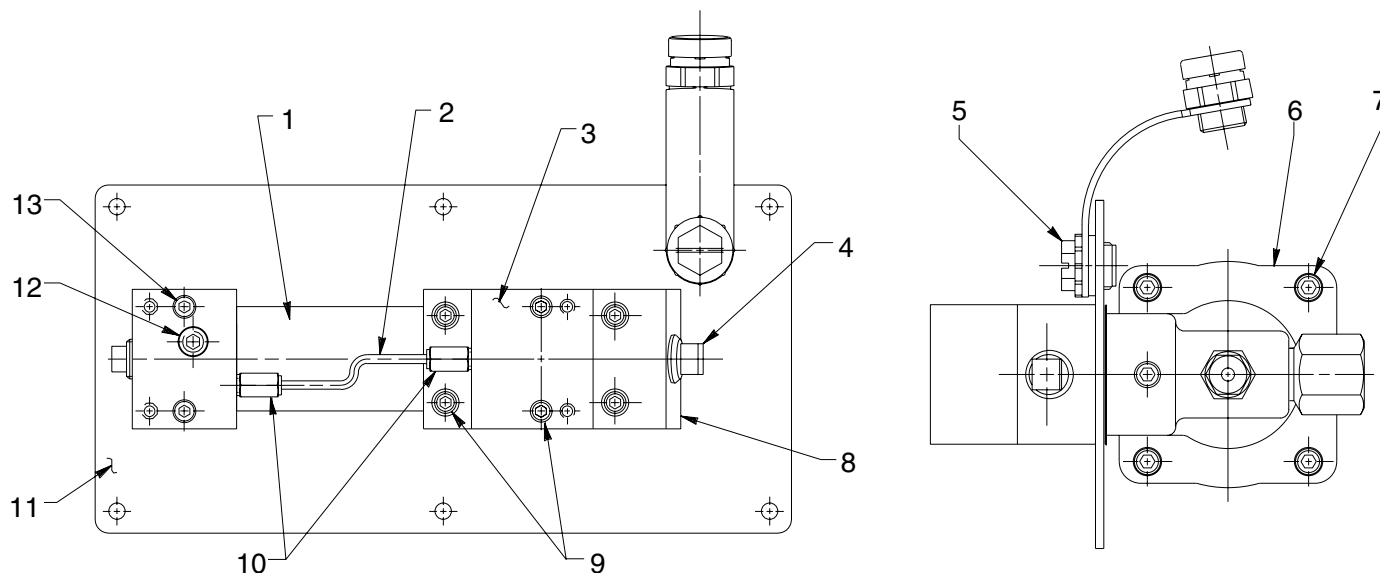
Item No.	Part No.	No. Req'd	Description
1	44025	1	Remote Hand Switch Assembly (Not included on 52431; See Form No. 100426)
2	208218	6	Straight Fitting
3	45052	1	Hose Assembly (Not included on 52431)
4	41605	1	Shroud
5	10164	4	Slotted Screw (#10-24 UNC X 3/8 Lg.)
6	305495	1	Trade Name Decal (For 4021)
	305496	1	Trade Name Decal (For PA4R)
7	305494	1	Important Decal (For Y13-REM-HKP & Y13-REM-PF)
8	61243	1	Reservoir
9	33853	1	Reservoir Gasket
10	211060	10	Screw (#9-15 X 1" Lg.; Torque to 25/30 in. lbs.)

Refer to any operating instructions included with this product for detailed information about operation, testing, disassembly, reassembly, and preventive maintenance.

Items found in this parts list have been carefully tested and selected. **Therefore: Use only genuine replacement parts!**

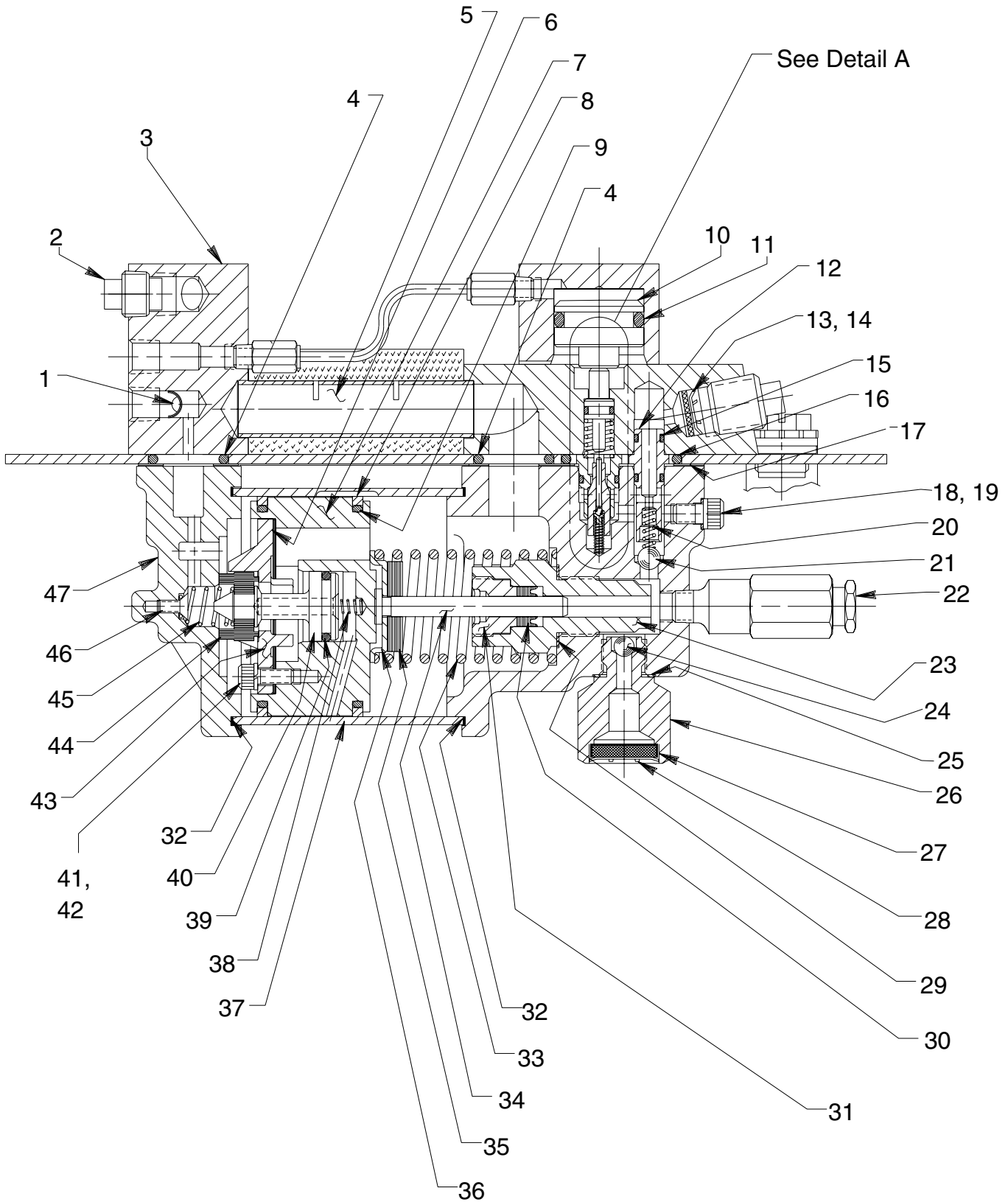
Additional questions can be directed to our Technical Services Department.

TOP AND END VIEW



Item No.	Part No.	No. Req'd	Description
1	29992	1	Foam Tube
2	14281	.3 ft.	Tubing
3	34759	1	Release Valve
4	11127	1	Pressure Plug
5	20937S	1	Filler/Breather Cap
6	50494	1	Pump Body
7	17428	4	Cap Screw (1/4-20 UNC X 3-1/2 Lg.; Torque to 85/95 in. lbs. oiled. Note: Cross torque in increments of 30 in. lbs.)
8	41598	1	Release Valve
9	11151	6	Cap Screw (10-24 UNC X 1-1/4 Lg.; Torque to 50/60 in. lbs.)
10	250725	2	Straight Fitting
11	45840BK2	1	Cover Plate
12	15499	1	Pipe Plug
13	14423	2	Cap Screw (#10-24 X 2" Lg.)

SIDE VIEW



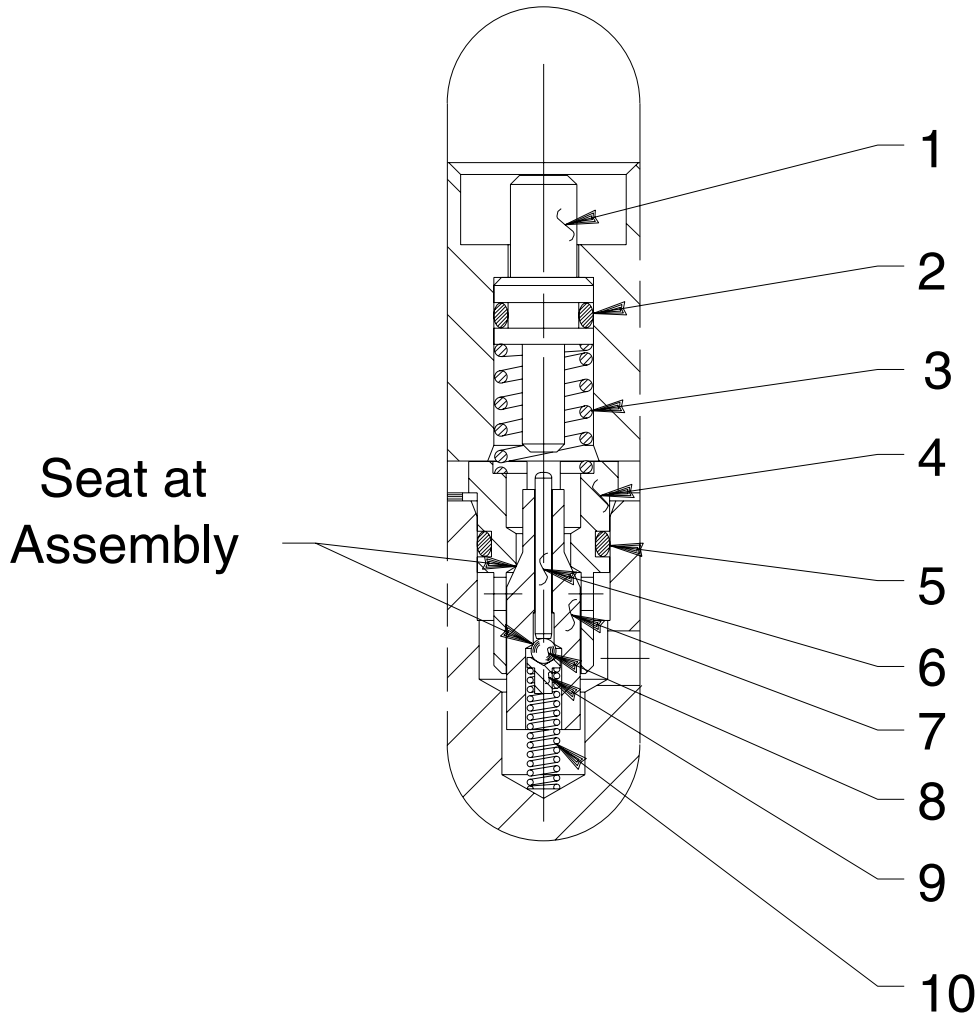
Item No.	Part No.	No. Req'd	Description	Item No.	Part No.	No. Req'd	Description
1	216296	1	Filter Disc	24	10375	1	Steel Ball (1/4 Dia.)
2	13272	1	Pipe Plug (Plastic)	25	10261	1	Copper Washer (3/4 X 19/32 X 1/32)
3	41601	1	Manifold	26	308893	1	Filter Adapter (Torque to 40/50 ft. lbs.oiled.)
4	*251214	2	O-ring (1.002 x .720 x .141)	27	214578	1	Filter
	†251217	2	O-ring (1.002 x .720 x .141)	28	214586	1	Retaining Ring (Internal)
	■ 251213	2	O-ring (1.002 x .720 x .141)	29	10263	1	Copper Washer (1" X .765 X 1/32)
5	28387	1	Muffler	30	13934	1	U-cup
6	28239	1	Gasket	31	304295	1	Retainer (Note: Apply Loctite No. 277 to external threads and torque to 80/100 in. lbs.)
7	52390	1	Piston Body	32	17429	2	Backup Washer (2-15/16 X 2-3/4 X .045, -148)
8	14265	2	Piston Ring	33	13938	1	Compression Spring (1.452 O.D. X 4-7/16 Lg.)
9	*11229	2	O-ring (2-3/8 X 2-3/16 X 3/32, -139)	34	28226	1	Piston
	†11446	2	O-ring (2-3/8 x 2-3/16 x 3/32, -139)	35	203143	1	Bumper
	■ 212888	2	O-ring (2-3/8 x 2-3/16 x 3/32, -139)	36	210994	1	Spring Guide
10	34757	1	Release Piston	37	37434	1	Air Cylinder (Note: Locate groove on upper half [top] of pump with chamfered tube end towards rear head as shown.)
11	*208144	1	O-ring (1-1/8 x 7/8 x 1/8, -212)	38	12692	1	Compression Spring (3/16 O.D. X 1-11/16 Lg.)
	†19028	1	O-ring (1-1/8 x 7/8 x 1/8, -212)	39	*211052	1	O-ring (.900 X .706 X .097, -909)
	■ 19386	1	O-ring (2-1/8 x 7/8 x 1/8, -212)		†250192	1	O-ring (.900 x .708 x .097, -909)
12	34378	1	Check Valve Body		■ 250193	1	O-ring (.900 x .706 x .097, -909)
13	250638	1	Filter Disc	40	305475	1	Exhaust Valve Stem
14	11088	2	Retaining Ring	41	10241	3	Lockwasher (For #10 bolt)
15	*211053	2	O-ring (3/8 X 1/4 X 1/16, -010)	42	211054	3	Screw (#10-24 X 1/2 Lg.; Torque to 50/55 in. lbs.)
	†11438	2	O-ring (3/8 x 1/4 x 1/16, -010)	43	33822	1	Piston End Plate
	■ 17715	2	O-ring (3/8 X 1/4 X 1/16, -010)	44	28183	1	Piston Poppet
16	*251215	1	O-ring (1.494 x 1.212 x .141)	45	205679	1	Compression Spring (.485 O.D. X .915 Lg.)
	†251216	1	O-ring (1.494 x 1.212 x .141)	46	205674	1	Screw (8-32 UNC X 3/8 Lg.; Torque to 12/18 in. lbs.)
	■ 251212	1	O-ring (1.494 x 1.212 x .141)	47	51480	1	Rear Head
17	34283	1	Gasket				
18	10442	1	Washer (3/8 X 1/4 X 1/32)				
19	10002	1	Cap Screw (1/4-20 UNC X 3/8 Lg.; Torque to 90/100 in. lbs.)				
20	10445	1	Compression Spring (5/32 O.D. X 3/4 Lg.)				
21	10423	1	Steel Ball (9/32 Dia.)				
22	21278	1	Relief Valve Assembly (Set at 10,100/10,700 PSI)				
23	45278	1	Piston Cylinder (Torque to 90/100 ft. lbs. oiled.)				

Part numbers marked with an asterisk (*) are contained in Standard Repair Kit No. 300433.

Part numbers marked with a dagger (†) are contained in Viton Seal Kit No. 300649.

Part numbers marked with a square (■) are contained in EPR Seal Kit No. 300650.

DETAIL A



Item No.	Part No.	No. Req'd	Description
1	28227	1	Release Valve Button
2	*211053	1	O-ring (3/8 X 1/4 X 1/16, -010)
	†11438	1	O-ring (3/8 x 1/4 x 1/16, -010)
	■ 17715	1	O-ring (3/8 X 1/4 X 1/16, -010)
3	13944	1	Compression Spring (3/8 O.D. X 1/2 Lg.)
4	34377	1	Poppet Retainer
5	*15279	1	O-ring (1/2 X 3/8 X 1/16, -012)
	†19775	1	O-ring (1/2 X 3/8 X 1/16, -012)
	■ 17716	1	O-ring (1/2 X 3/8 X 1/16, -012)
6	13937	1	Dowel Pin (Note: Place tapered end towards ball.)
7	29037	1	Release Valve Poppet
8	14443	1	Steel Ball (3/32 Dia.)
9	209736	1	Ball Retainer
10	13959	1	Compression Spring (1/8 O.D. x 1/2 Lg.)

Part numbers marked with an asterisk (*) are contained in Standard Repair Kit No. 300433.

Part numbers marked with a dagger (†) are contained in Viton Seal Kit No. 300649.

Part numbers marked with a square (■) are contained in EPR Seal Kit No. 300650.