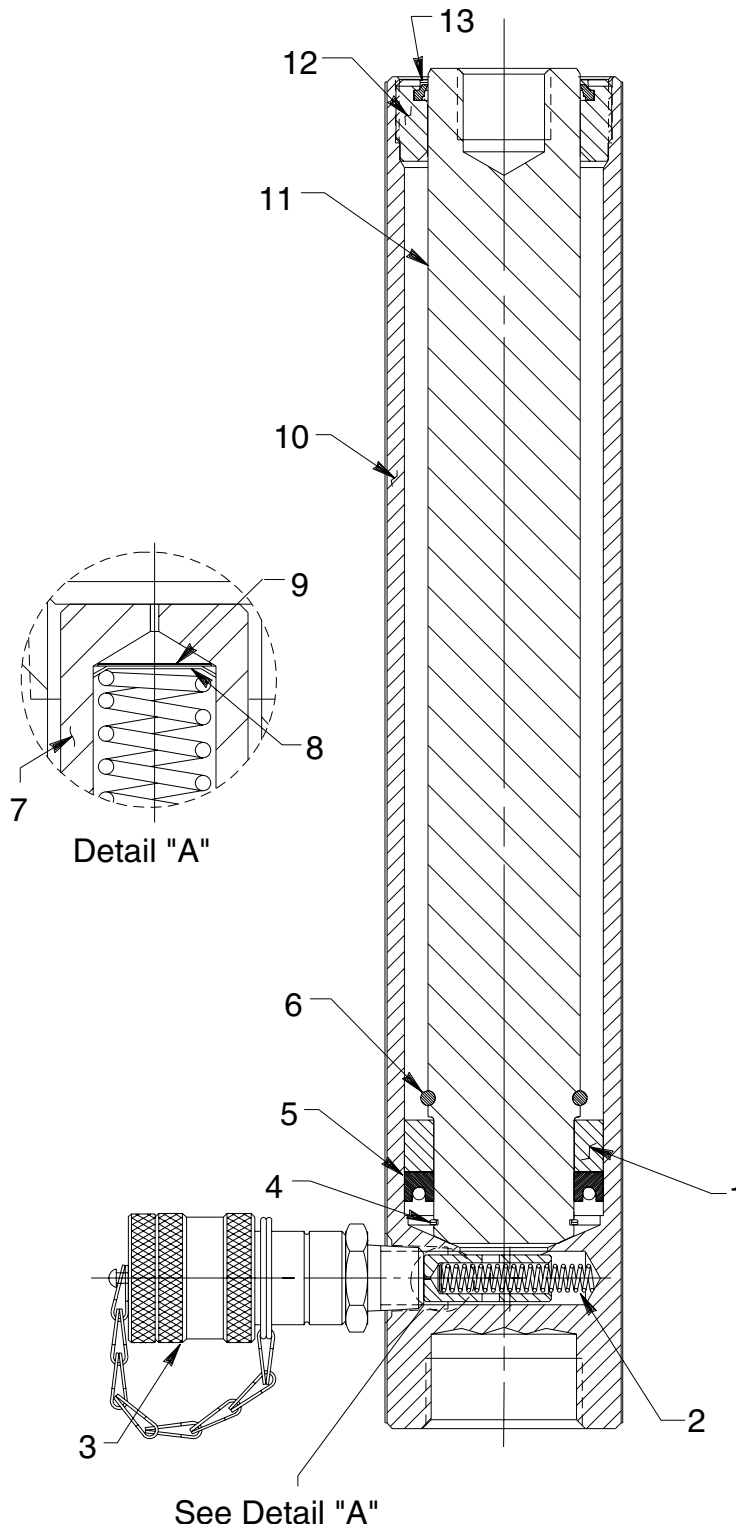


**SINGLE-ACTING, GRAVITY RETURN
HYDRAULIC CYLINDER**
Max. Capacity: 8.87 Ton at 5,000 PSI



Item No.	Part No.	No. Req'd	Description
1	350300	1	Piston Bearing
2	203031	1	Compression Spring (.300 O.D. X 1 3/4 Lg.)
3	9796	1	Ram Half Coupler w/ Plastic Dust Cap
4	*250637	1	Retaining Ring
5	*250639	1	U-cup
6	250627	1	Retaining Ring
7	350298	1	Poppet
8	12201	1	Retaining Ring
9	203475	1	Screen
10	64203	1	Cylinder Body
11	58194	1	Piston Rod
12	350299	1	Retainer Nut (Apply Loctite 242 & torque to 90/100 in. lbs.)
13	*250337	1	Rod Wiper

PARTS INCLUDED BUT NOT SHOWN

420350	1	Full Coverage Decal
--------	---	---------------------

Part numbers marked with an asterisk (*) are contained in Repair Kit No. 300656.



Refer to any operating instructions included with this product for detailed information about operation, testing, disassembly, reassembly, and preventive maintenance.

Items found in this parts list have been carefully tested and selected. **Therefore: Use only genuine Power Team replacement parts!**

Additional questions can be directed to our Technical Services Department.