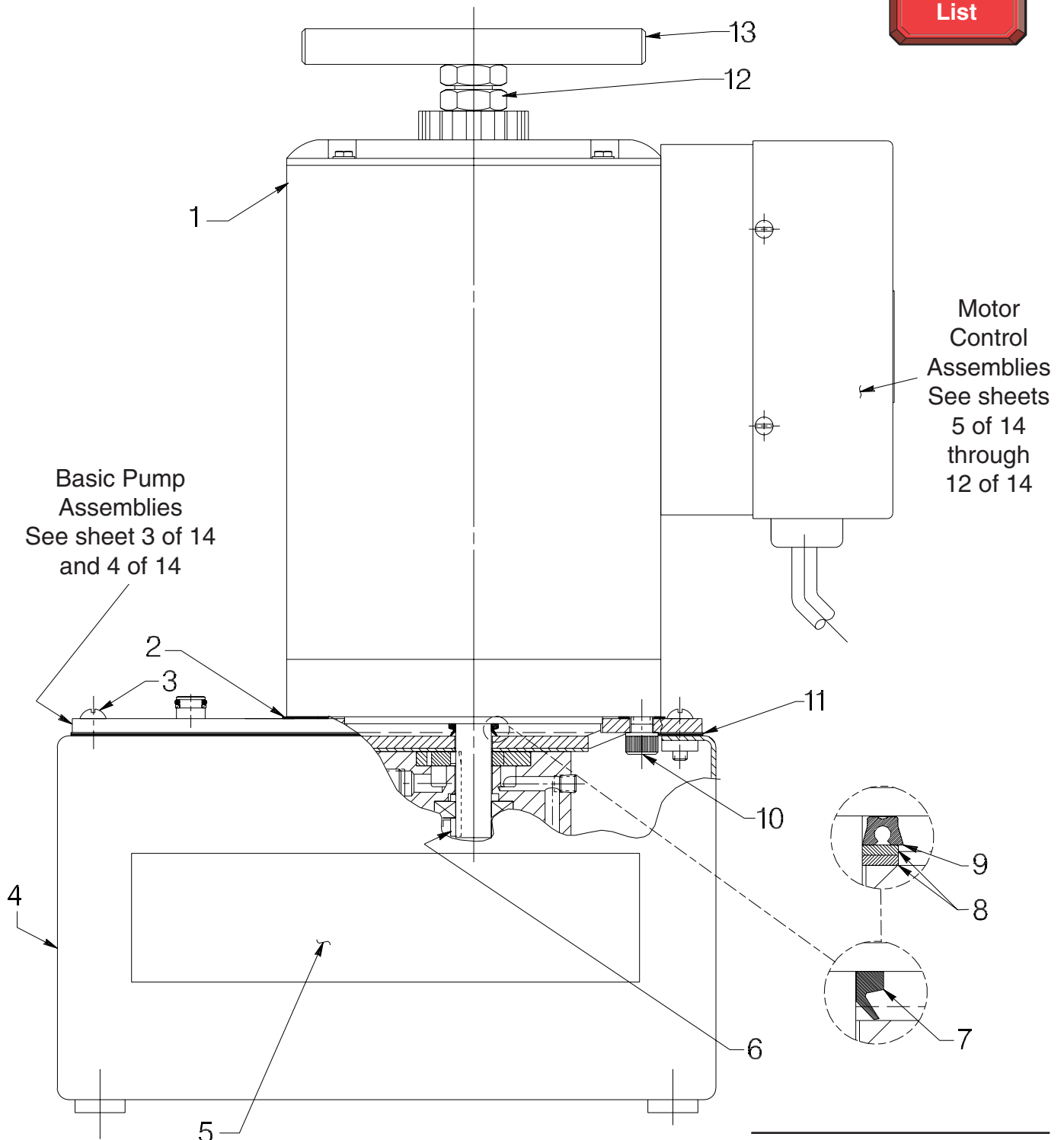


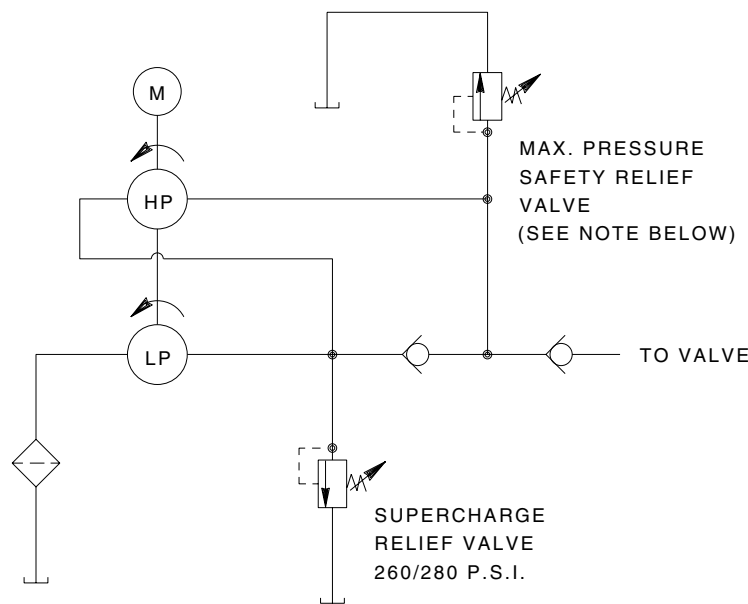
ELECTRIC HYDRAULIC PUMP



Item No.	Part No.	No. Req'd	Description
1	58053WH2	1	Electric Motor (115/230 V., 60 Hz.)
	53104WH2	1	Electric Motor (110/220 V., 50 Hz.)
2	307425	1	Motor Base Gasket
3	10177	10	Machine Screw (#10-24 x 3/4 Lg.; Metal Reservoir)
	209799	14	Self-tapping Washer Hd. Screw (1/4-10 x 7/8 Lg.; Plastic Reservoir)
4	40063OR9	1	Metal Reservoir
	61165	1	Plastic Reservoir
5	309219	2	Trade Name Decal
6	214097	1	Key
7	213674	1	V-ring Seal (Nitrile)
	215438	1	V-ring Seal (Viton)
8	251498	2	Backup Washer (For use with EPR U-cup [Item#9] only)
9	251291	1	U-cup (EPR)
10	10050	4	Soc. Hd. Screw (3/8-16 x 1" Lg.; Torque to 90/100 in. lbs.)
11	40164	1	Reservoir Gasket
12	10394	1	Nut
13	203146	1	T-handle
PARTS INCLUDED BUT NOT SHOWN			
	203972	1	Decal (CSA)
	213695	1	Decal (Intermittent Duty)

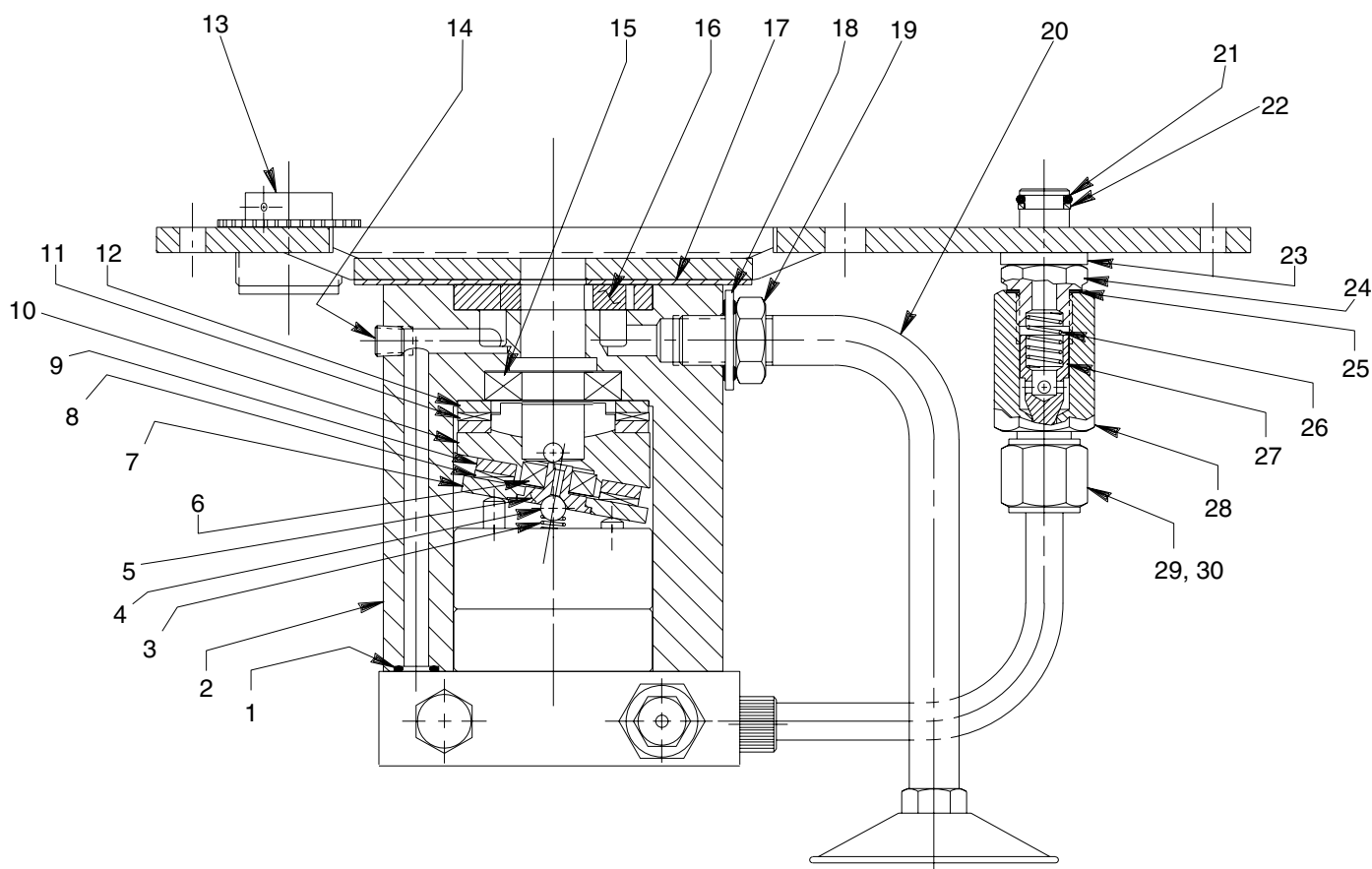


HYDRAULIC SCHEMATIC



NOTE

Standard relief valves are set at 10,100/10,700 PSI.
Relief valves pre-set at special settings are available.
Refer to your pump model number or contact Power Team Technical Services.

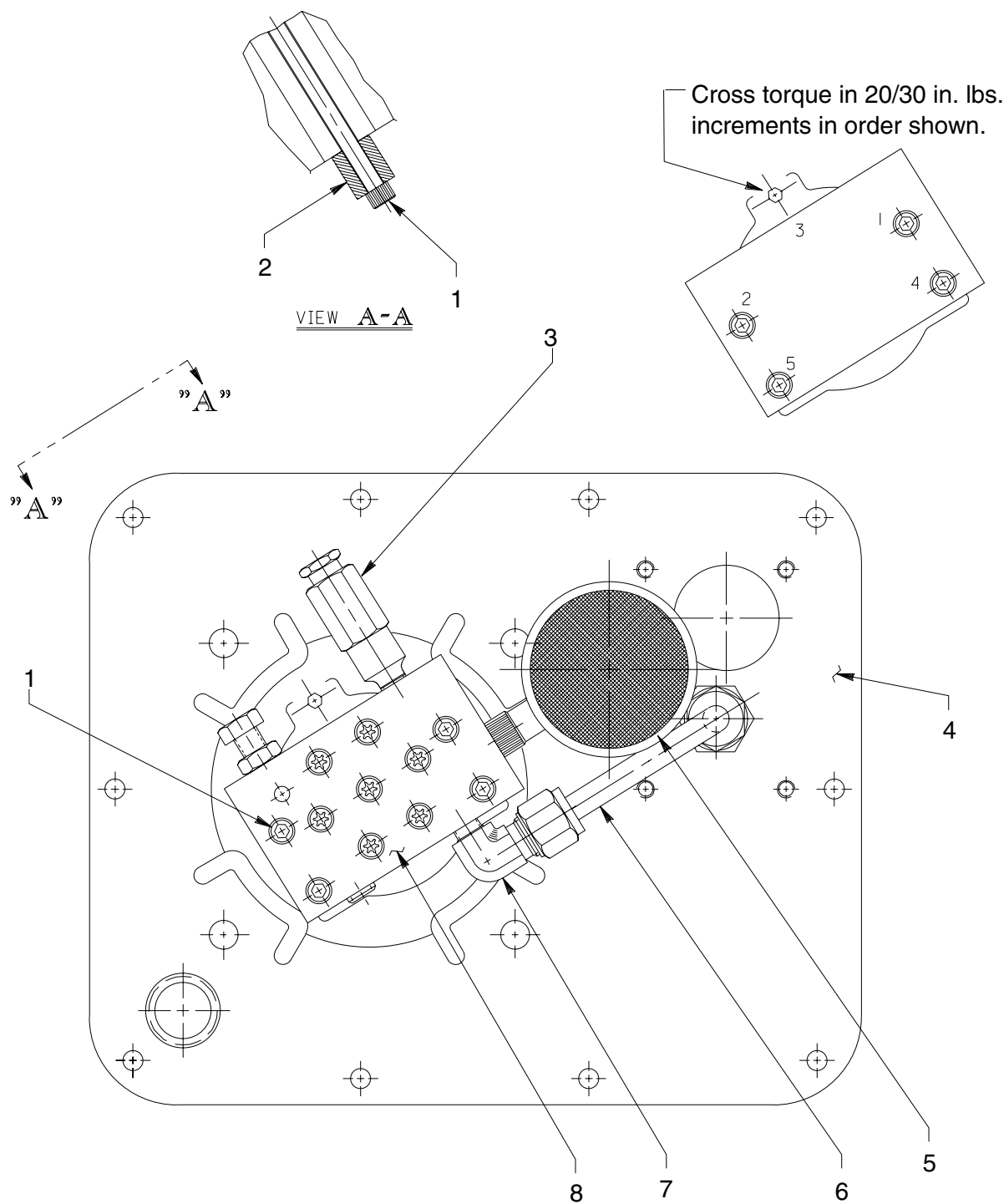
BASIC PUMP ASSEMBLY**SIDE VIEW**

Item No.	Part No.	No. Req'd	Description	Item No.	Part No.	No. Req'd	Description
1	10267	1	O-ring (7/16 x 5/16 x 1/16, -011; Nitrile)	18	213709	1	Washer Seal (Nitrile)
	18974	1	O-ring (7/16 x 5/16 x 1/16, -011; Viton)		215633	1	Washer Seal (Viton)
	13472	1	O-ring (7/16 x 5/16 x 1/16, -011; EPR)		215634	1	Washer Seal (EPR)
2	52883	1	Pump Body	19	10390	1	Nut (1/2-20 UNF)
3	16320	1	Compression Spring (1/4 O.D. x 3/4 Lg.)	20	213686	1	Intake Tube
4	10375	1	Steel Ball (1/4 dia.)	21	10268	1	O-ring (1/2 x 3/8 x 1/16, -012; Nitrile)
5	23547	1	Top Plate Bearing		19775	1	O-ring (1/2 x 3/8 x 1/16, -012; Viton)
6	11814	1	Ball Bearing		17716	1	O-ring (1/2 x 3/8 x 1/16, -012; EPR)
7	23548	1	Top Plate	22	11863	1	Backup Washer (1/2 x 3/8 x 1/16, -012)
8	15431	1	Needle Thrust Bearing	23	21484	1	Washer
9	15432	1	Needle Thrust Bearing Race	24	214762	1	Valve Connector (Torque to 20/30 ft. lbs.)
10	35271	1	Angle Plate	25	10261	1	Copper Washer (3/4 x 19/32 x 1/32)
11	11228	1	Needle Thrust Bearing	26	10425	1	Compression Spring (3/8 O.D. x 3/4 Lg.)
12	11227	2	Needle Thrust Bearing Race	27	20771	1	Poppet
13	213706	1	Filler Cap	28	201879	1	Check Valve Body
14	11084	1	Pipe Plug (1/16 NPTF; Torque to 35/45 in. lbs. oiled)	29	10430	1	Tube Sleeve
15	15695	1	Ball Bearing	30	10431	1	Tube Nut (Torque to 40/50 ft. lbs. while holding Valve Connector item #24)
16	15693	1	Gerotor Set				
17	307296	1	Wear Plate				

Sheet No. 2 of 14

Issue Date: Rev. 1-30-96

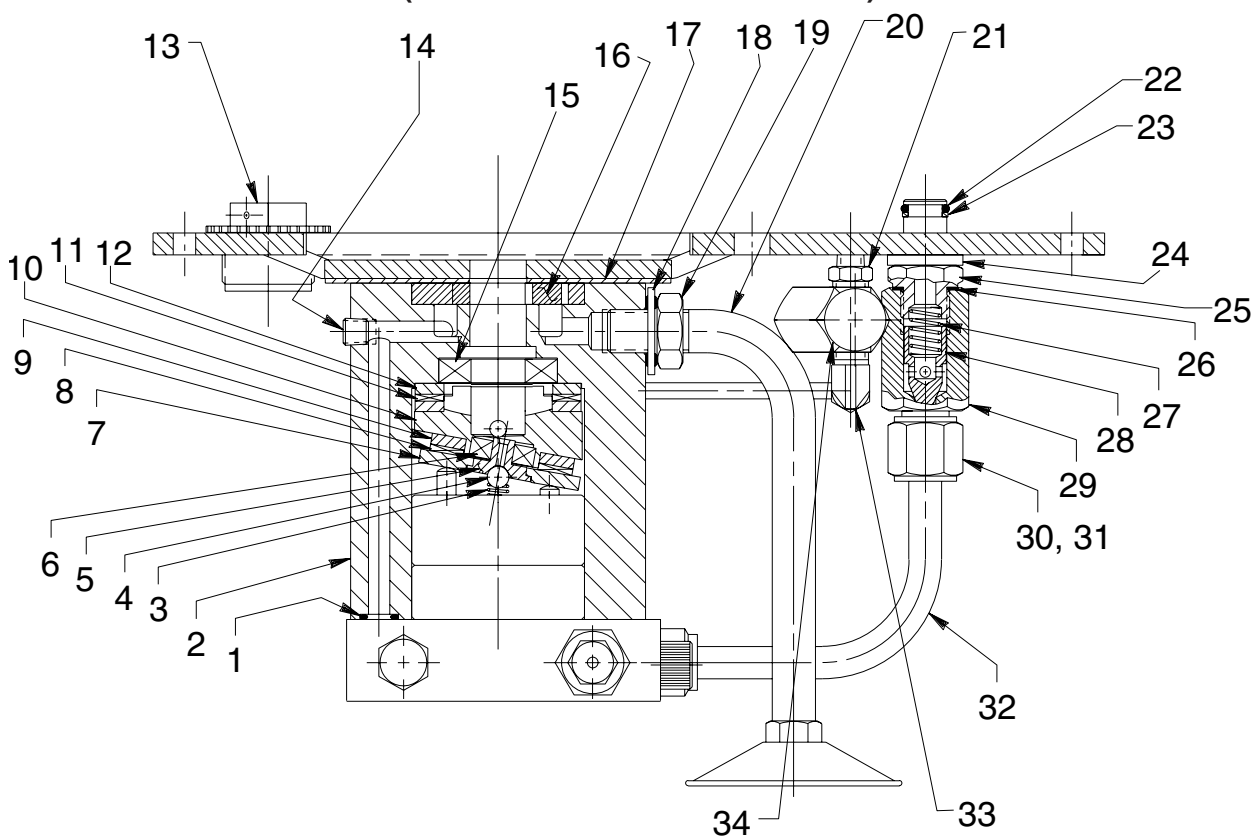
BASIC PUMP ASSEMBLY
BOTTOM VIEW



Item No.	Part No.	No. Req'd	Description
1	15642	5	Cap Screw (1/4-20 x 5" Lg.; Torque to 55/65 in. lbs.)
2	214720	1	Spacer
3	21278	1	Relief Valve (Set at 10,100/10,700 PSI)
4	61566BK2	1	Cover
5	29682	1	Strainer
6	307459	1	Oil Line
7	10475	1	Elbow
8	36922	1	High Pressure Pump Assembly (See sheet 4 of 14)

BASIC PUMP ASSEMBLY WITH ACCUMULATOR**SIDE VIEW**

(For units with an accumulator)



Item No.	Part No.	No. Req'd	Description	Item No.	Part No.	No. Req'd	Description
1	10267	1	O-ring (7/16 x 5/16 x 1/16, -011; Nitrile)	19	10390	1	Nut (1/2-20 UNF)
	18974	1	O-ring (7/16 x 5/16 x 1/16, -011; Viton)	20	213686	1	Intake Tube
	13472	1	O-ring (7/16 x 5/16 x 1/16, -011; EPR)	21	215373	1	Straight Fitting
2	52883	1	Pump Body	22	10268	1	O-ring (1/2 x 3/8 x 1/16, -012; Nitrile)
3	16320	1	Compression Spring (1/4 O.D. x 3/4 Lg.)		19775	1	O-ring (1/2 x 3/8 x 1/16, -012; Viton)
4	10375	1	Steel Ball (1/4 dia.)		17716	1	O-ring (1/2 x 3/8 x 1/16, -012; EPR)
5	23547	1	Top Plate Bearing	23	11863	1	Backup Washer (1/2 x 3/8 x 1/16, -012)
6	11814	1	Ball Bearing	24	21484	1	Washer
7	23548	1	Top Plate	25	214762	1	Valve Connector (Torque to 20/30 ft. lbs.)
8	15431	1	Needle Thrust Bearing	26	10261	1	Copper Washer (3/4 x 19/32 x 1/32)
9	15432	1	Needle Thrust Bearing Race	27	10425	1	Compression Spring (3/8 O.D. x 3/4 Lg.)
10	35271	1	Angle Plate	28	20771	1	Poppet
11	11228	1	Needle Thrust Bearing	29	201879	1	Check Valve Body
12	11227	2	Needle Thrust Bearing Race	30	10430	1	Tube Sleeve
13	213706	1	Filler Cap	31	10431	1	Tube Nut (Torque to 40/50 ft. lbs. while holding Valve Connector item #24)
14	11084	1	Pipe Plug (1/16 NPTF; Torque to 35/45 in. lbs. oiled)	32	307459	1	Oil Line Tube
15	15695	1	Ball Bearing	33	11278	1	90° Fitting
16	15693	1	Gerotor Set	34	21943	1	Accumulator Assembly
17	307296	1	Wear Plate				
18	213709	1	Washer Seal (Nitrile)				
	215633	1	Washer Seal (Viton)				
	215634	1	Washer Seal (EPR)				

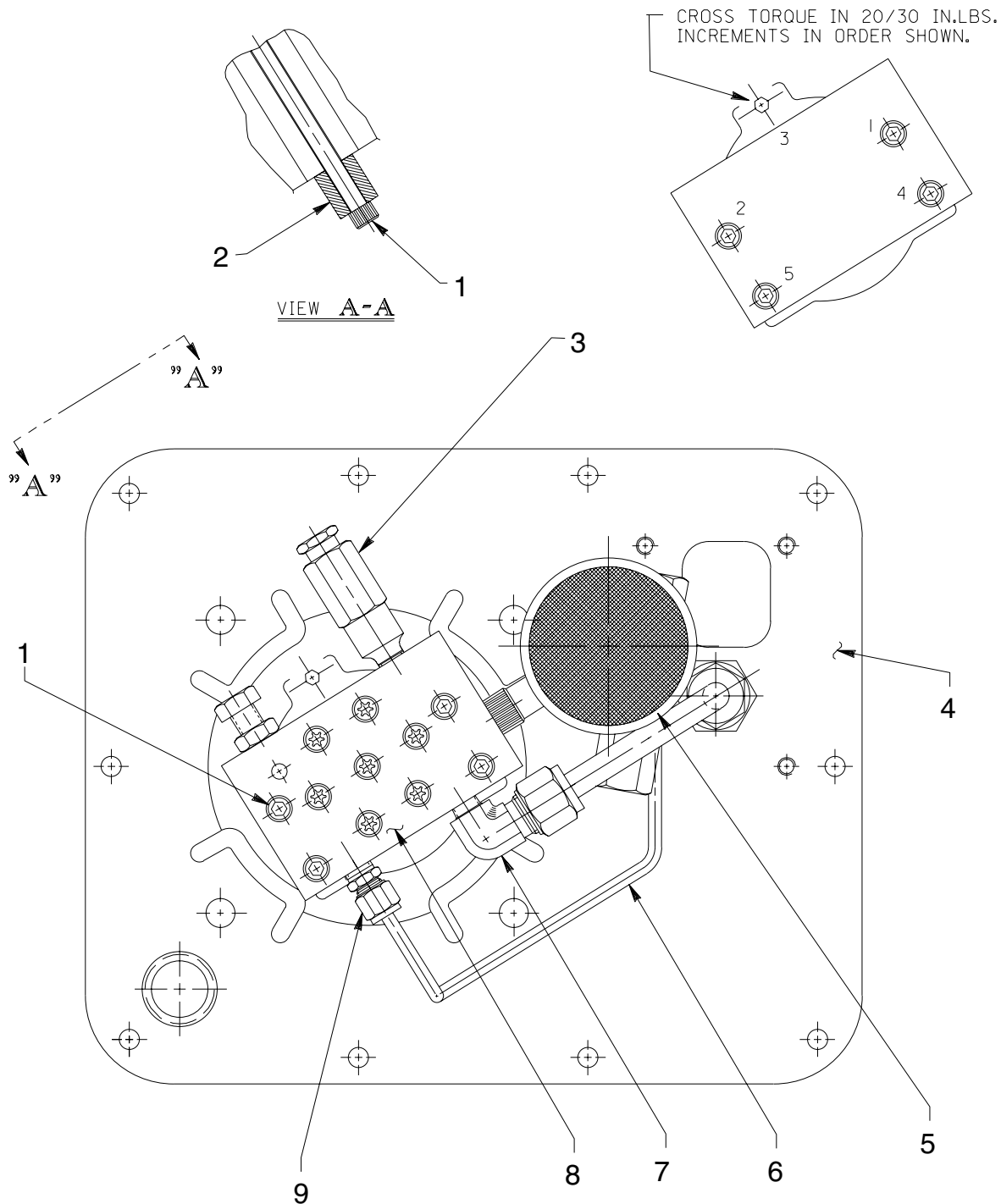
Sheet No. 3 of 14

Issue Date: Rev. 1-30-96

BASIC PUMP ASSEMBLY

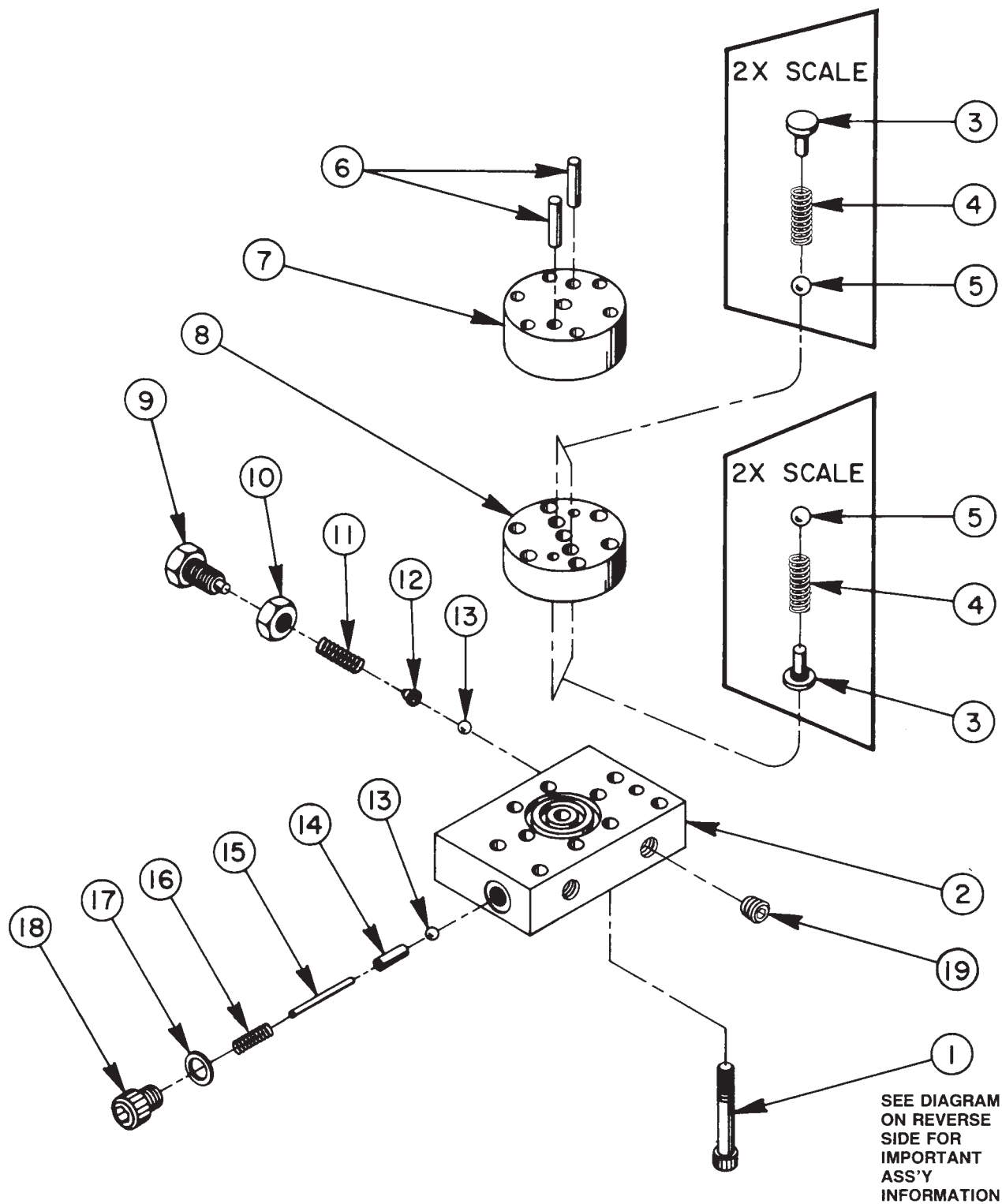
BOTTOM VIEW

(For units with an accumulator)



Item No.	Part No.	No. Req'd	Description
1	15642	5	Cap Screw (1/4-20 x 5" Lg.; Torque to 55/65 in. lbs.)
2	214720	1	Spacer
3	21278	1	Relief Valve (Set at 10,100/10,700 PSI)
4	47606	1	Reservoir Cover
5	29682	1	Strainer
6	47607	1	Oil Line (Pilot)
7	10475	1	90° Elbow
8	36922	1	High Pressure Pump Assembly (See sheet 4 of 14)
9	11173	1	Straight Fitting

HIGH PRESSURE PUMP ASSEMBLY

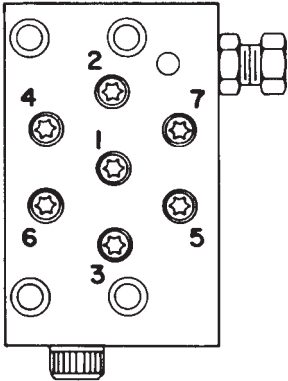
**To Parts
List**

Item No.	Part No.	No. Req'd	Description
1	*16747	7	Torx Drive Cap Screw (1/4-28 x 1-3/4 Lg.; See diagram below)
2	*36912	1	Pump End Plate
3	*24549	4	Valve Guide
4	*10445	4	Compression Spring (5/32 O.D. x 3/4 Lg.)
5	*12223	4	Steel Ball (3/16 dia.)
6	*20775	2	Piston
7	*41006	1	Pump Barrel
8	*41007	1	Valve Head
9	200797	1	Adjusting Screw
10	10386	1	Jam Nut (3/8-24)
11	15691	1	Compression Spring (1/4 O.D. x 5/8 Lg.)
12	200796	1	Adapter, Spring & Ball
13	10375	2	Steel Ball (1/4 dia.)
14	201998	1	Sleeve
15	12571	1	Roll Pin (1/8 dia. x 1-3/8 Lg.)
16	14431	1	Compression Spring (.197 O.D. x 3/4 Lg.)
17	12042	1	Copper Washer (9/16 x 3/8 x 1/32 thk.)
18	29690	1	Cap Screw (Torque to 180 in. lbs.)
19	10427	1	Pipe Plug (1/8 NPTF)



Consult factory when replacing items marked with an asterisk (*).

BOLT TIGHTENING SEQUENCE



NOTE: Assemble in sequence shown. Lubricate under head on threads. Torque to 170 in. lbs.

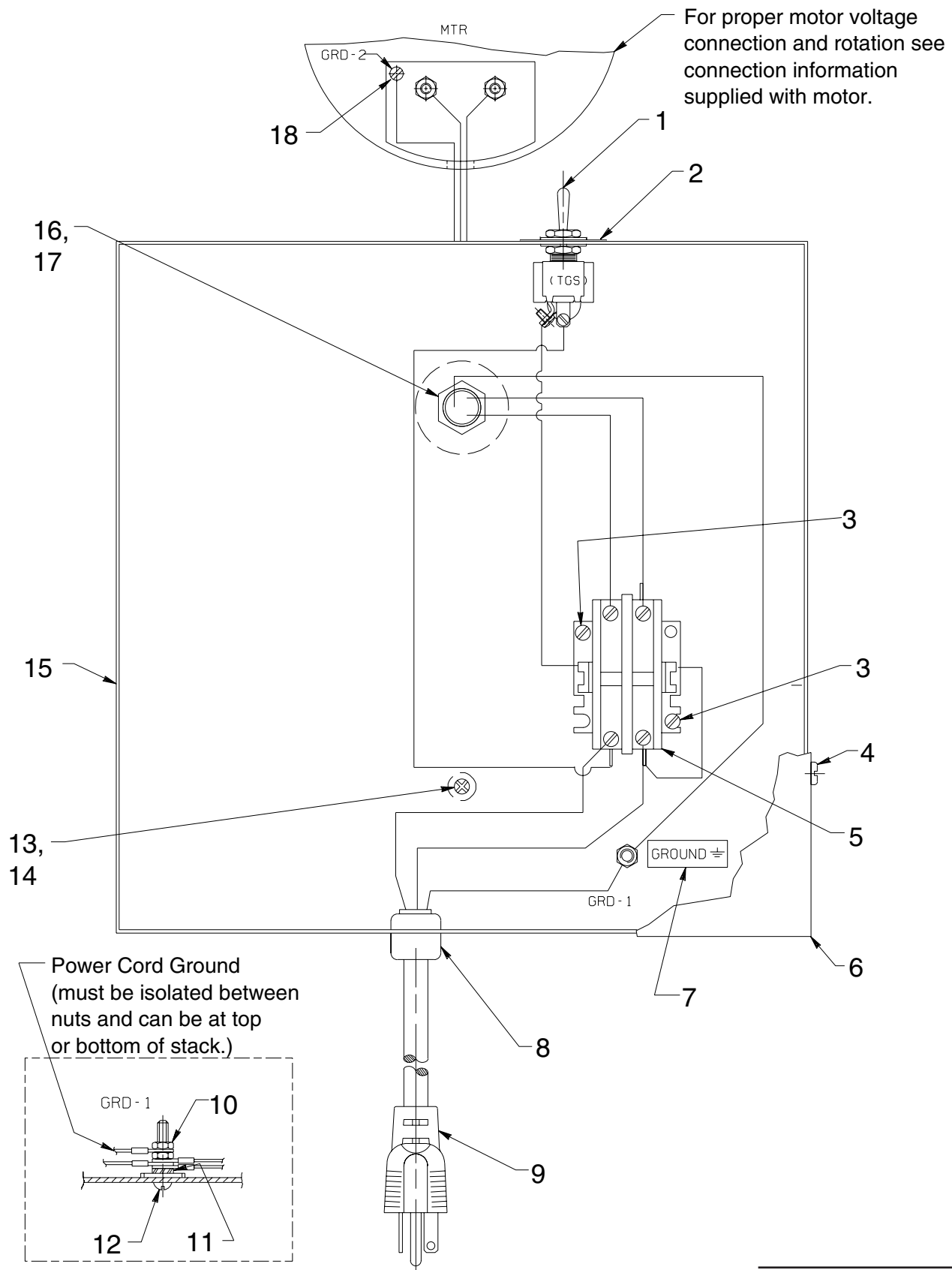
Refer to any operating instructions included with the product for detailed information about operation, testing, disassembly, reassembly, and preventive maintenance.

Items found in this parts list have been carefully tested and selected. **Therefore: Use only genuine Power Team replacement parts!**

Additional questions can be directed to our Technical Services Departments.

ELECTRICAL CONTROL ASSEMBLY-110/115V

110/115 Volt, 50/60 Hz., Single Phase

(For units with manifold/manual valves)**To Parts
List**

Item No.	Part No.	No. Req'd	Description
1	12301	1	Toggle Switch
2	13890	1	Indicator Plate
3	10166	2	Machine Screw (#10-24 UNC X 1/2 Lg.)
4	14812	4	Tap Screw (#8-18 X 3/8 Lg.)
5	420718-1	1	Contactor
6	43126WH2	1	Control Box Cover
7	205189	1	Ground Decal
8	210112	1	Strain Relief Bushing
9	350155	1	Cord Set (12/3 SJTO)
10	10197	2	Nut (#10-24 UNC)
11	11108	1	Lockwasher (#10 External Tooth)
12	11856	1	Machine Screw (#10-24 X 1" Lg.)
13	13532	1	Screw (#8-32 X 3/8 Lg.)
14	206857	1	Washer (For #10 Bolt)
15	51218WH2	1	Electrical Control Box
16	11202	1	Nipple
17	212434	1	Washer (For 7/8 bolt)
18	15468	1	Screw (#6-32 X 3/8 Lg.)

PARTS INCLUDED BUT NOT SHOWN
200188 1 Warning Decal



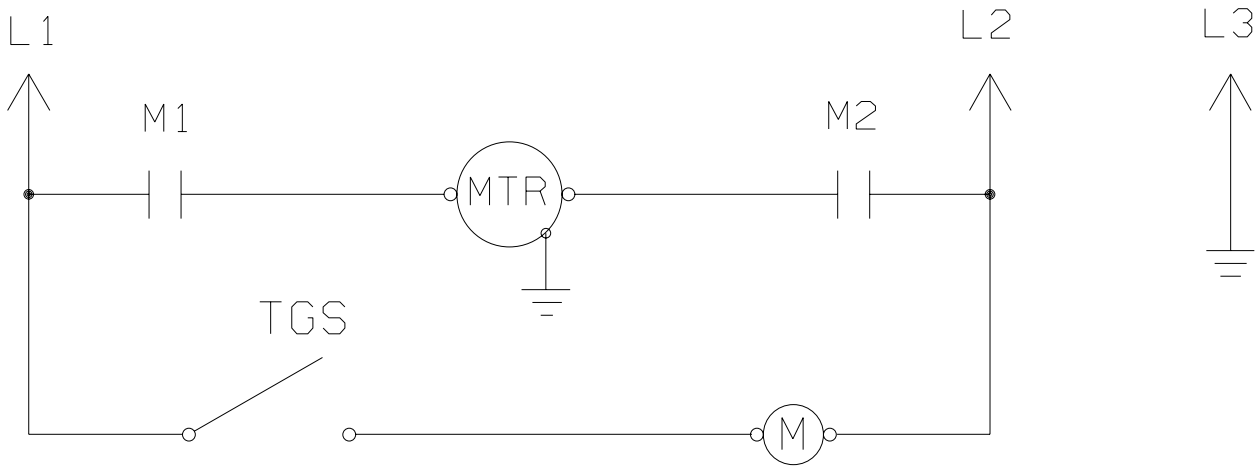
ELECTRICAL SCHEMATIC
(For units with manifold/manual valves)
110/115 Volt, 50/60 Hz., Single Phase

WARNING

To help avoid personal injury, all electrical work must be done by a qualified electrician.

North American & International Color Codes

Conductors	North American	International
Line	Black.....	Brown
Neutral	White	Blue
Ground	Green	Green/Yellow



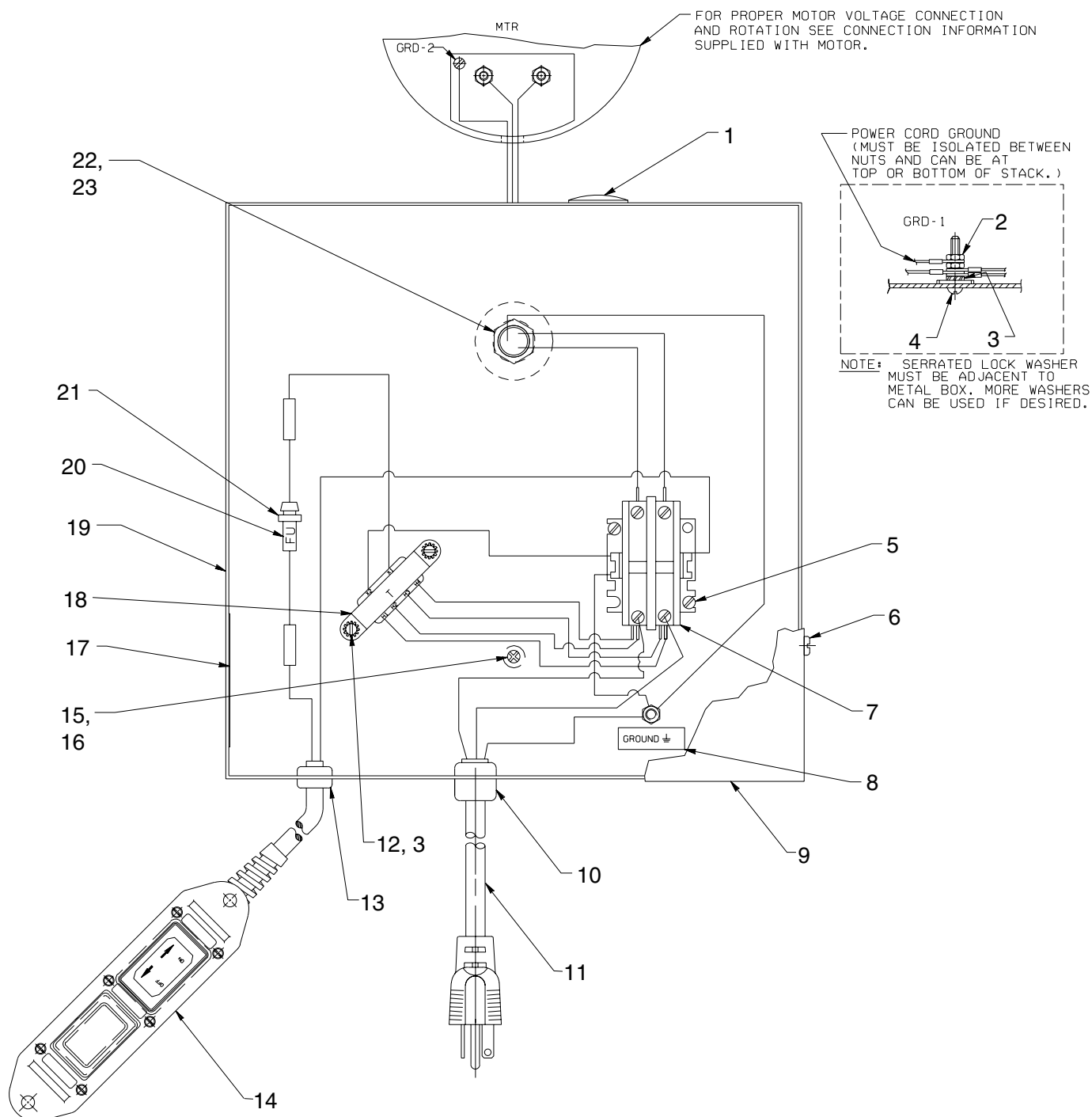
Note: Motor is not wired for dual cycle. It is for either 50 or 60 cycle use. Refer to motor nameplate for proper cycle.

ELECTRICAL CONTROL ASSEMBLY

110/115 Volt, 50/60 Hz., Single Phase

(For units with manifold/manual valve and remote)

To Parts List



Item No.	Part No.	No. Req'd	Description
1	17782	1	Snap Button
2	10197	2	Hex Nut (#10-24)
3	11108	3	Lockwasher (#10)
4	11856	1	Screw (#10-24 x 1" Lg.)
5	10166	2	Screw (#10-24 UNC X 1/2 Lg.)
6	14812	4	Screw
7	420718-4	1	Contactor
8	250189	1	Decal (Ground)
9	43126WH2	1	Control Box Cover
10	210112	1	Strain Relief Bushing
11	350155	1	Cord Set (12/3 SJT0; 115 V.)
12	11539	2	Screw (#10-24 X 1/4 Lg.)
13	15993	1	Strain Relief Bushing
14	25017	1	Remote Hand Switch Ass'y (See sheet 13 of 14)

Item No.	Part No.	No. Req'd	Description
15	13532	1	Pan Hd. Self-tapping Screw
16	206857	1	Washer
17	250150	1	Decal
18	305665	1	Transformer
19	51218WH2	1	Control Box
20	206962	1	Fuse (3A)
21	16887	1	Fuse Holder
22	11202	1	Connector
23	212434	1	Conduit Lockwasher

PARTS INCLUDED BUT NOT SHOWN

200188 1 Warning Decal



ELECTRICAL SCHEMATIC

(For units with manifold/manual valve and remote)

110/115 Volt, 50/60 Hz., Single Phase

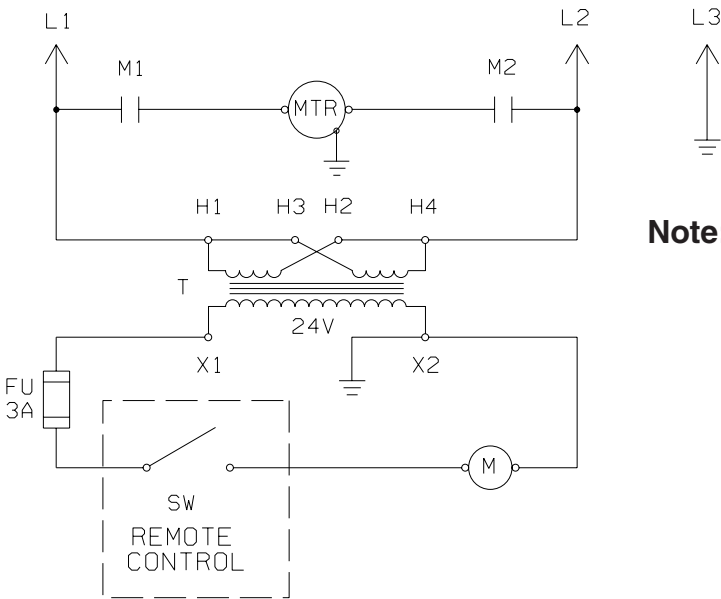


WARNING

To help avoid personal injury, all electrical work must be done by a qualified electrician.

North American & International Color Codes

Conductors	North American	International
Line	Black	Brown
Neutral	White	Blue
Ground	Green	Green/Yellow



Note:

Unless otherwise specified, all units are to be wired for 110/115., 50/60 Hz. (CCW rotation from lead end)

Transformer connections are as shown for 110/115 V., 50/60 Hz.

For 220/230 V., 50/60 Hz. units, transformer connections are to be as follows:

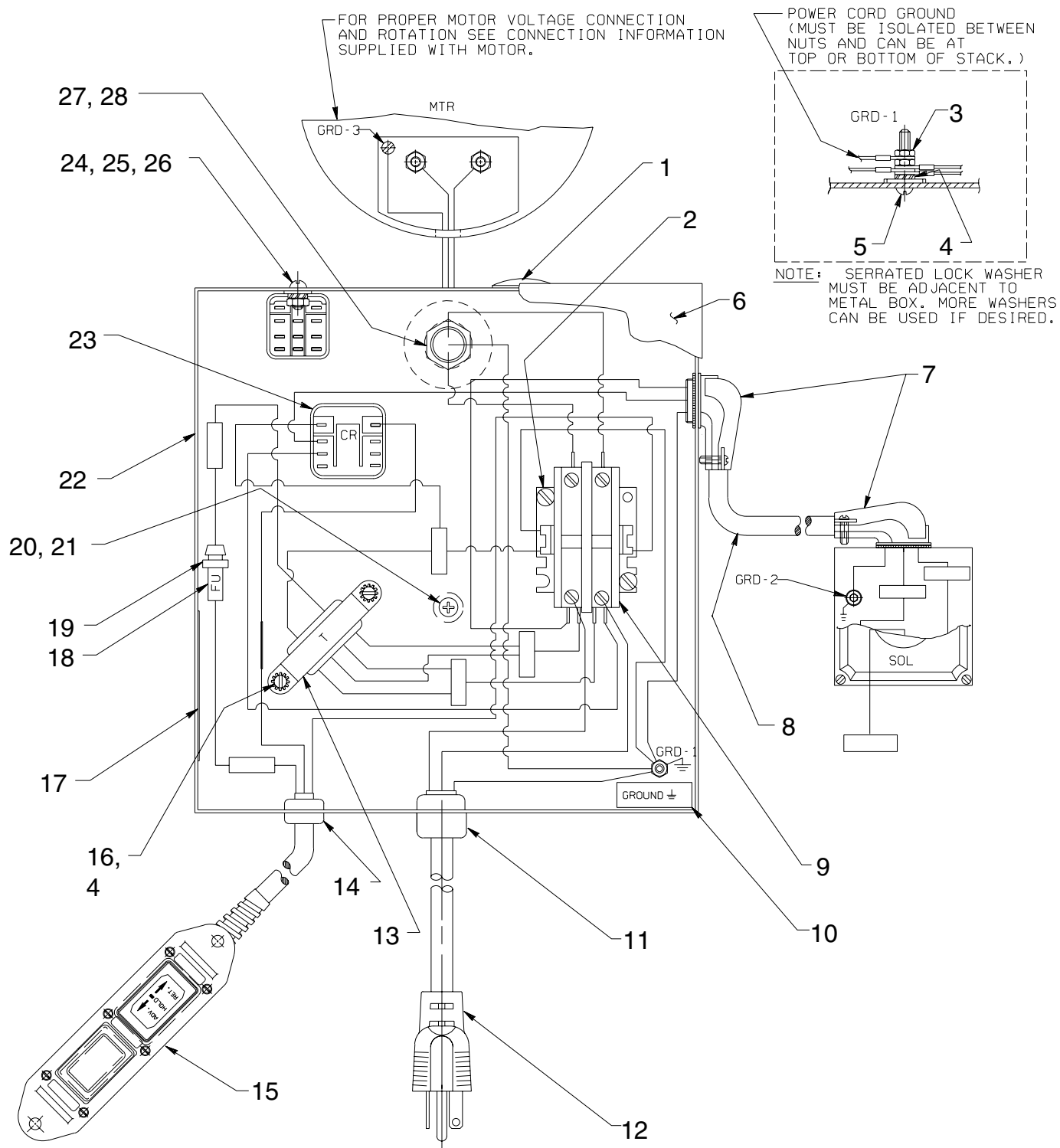
- H1 to L1
- H2 to H3
- H4 to L2

Motor is not wired for dual cycle. It is for either 50 or 60 cycle use. Refer to motor nameplate for proper cycle.

Note: Shaded areas reflect last revision(s) made to this form.

ELECTRICAL CONTROL ASSEMBLY

110/115 Volt, 50/60 Hz., Single Phase

(For units with 3-way, 2 position solenoid valves)**To Parts
List**

Item No.	Part No.	No. Req'd	Description
1	17782	1	Snap Button
2	10166	2	Screw (#10-24 UNC X 1/2 Lg.)
3	10197	2	Hex Nut (#10-24)
4	11108	3	Lockwasher (#10)
5	11856	1	Screw (#10-24 x 1" Lg.)
6	43126WH2	1	Control Box Cover (115 V.)
7	11144	2	Electrical 90° Connector
8	12293	2.54 ft.	Electrical Cable (16/3 SJT0)
9	420718-4	1	Contactor
10	205189	1	Decal (Ground)
11	210112	1	Strain Relief Bushing
12	350155	1	Cord Set (12/3 SJT0; 115 V.)
13	305665	1	Transformer
14	15993	1	Strain Relief Bushing
15	307491	1	Remote Hand Switch Ass'y (See back sheet 13 of 14)
16	11539	4	Screw (#10-24 X 1/4 Lg.)



Item No.	Part No.	No. Req'd	Description
17	250150	1	Decal
18	206962	1	Fuse (3A)
19	16887	1	Fuse Holder
20	13532	1	Pan Hd. Self-tapping Screw (#8)
21	206857	1	Washer
22	51218WH2	1	Control Box (115 V.)
23	39092	1	Relay
24	10159	2	Screw (#6-32 x 5/16 Lg.)
25	10195	2	Hex Nut (#6-32)
26	15906	2	Lockwasher (#6)
27	11202	1	Electrical Connector
28	11362	1	Conduit Lockwasher

PARTS INCLUDED BUT NOT SHOWN

200188	1	Warning Decal
14812	4	Screw (Use to mount control box cover to box body.)

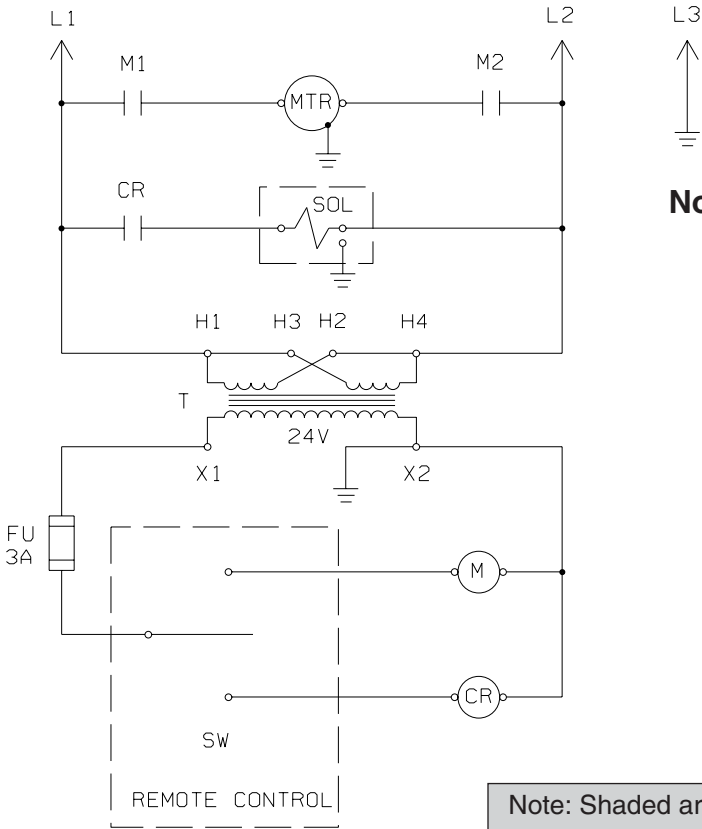
ELECTRICAL SCHEMATIC
(For units with 3-way, 2 position solenoid valves)
110/115 Volt, 50/60 Hz., Single Phase

WARNING

To help avoid personal injury, all electrical work must be done by a qualified electrician.

North American & International Color Codes

Conductors	North American	International
Line	Black	Brown
Neutral	White	Blue
Ground	Green	Green/Yellow



Note:

Unless otherwise specified, all units are to be wired for 110/115 V., 50/60 Hz. (CCW rotation from lead end)

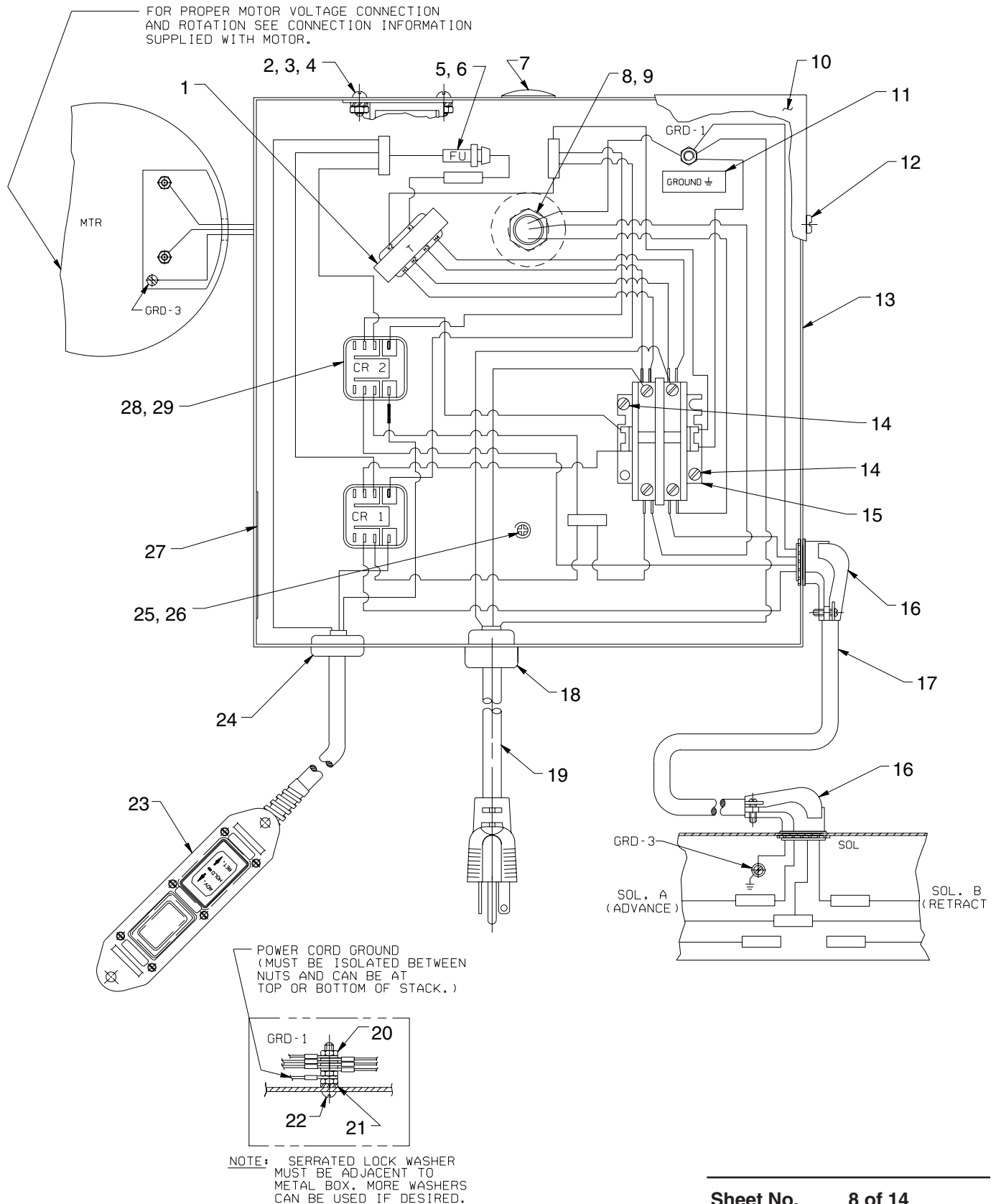
Transformer connections are as shown for 110/115 V., 50/60 Hz.

Motor is not wired for dual cycle. It is for either 50 or 60 cycle use. Refer to motor nameplate for proper cycle.

Note: Shaded areas reflect last revision(s) made to this form.

ELECTRICAL CONTROL ASSEMBLY

110/115 Volt, 50/60 Hz., Single Phase

(For units with 4-way, 2 & 3 position solenoid valves)**To Parts
List**

Item No.	Part No.	No. Req'd	Description
1	305665	1	Transformer
2	10159	2	Machine Screw (#6-32 x 5/16 Lg.)
3	15906	2	Washer (For #6 bolt)
4	10195	2	Nut (#6-32)
5	206962	1	Fuse (3A)
6	16887	1	Fuse Holder
7	17782	1	Snap Button
8	11202	1	Conduit Connector
9	212434	1	Conduit Locknut
10	43126WH2	1	Control Box Cover
11	205189	1	Decal (Ground)
12	14812	4	Self-tapping Screw (#8-18 x 3/8 Lg.)
13	51218WH2	1	Control Box
14	10166	2	Machine Screw (#10-24 UNC X 1/2 Lg.)
15	420718-4	1	Contactor
16	11144	2	Conduit Connector



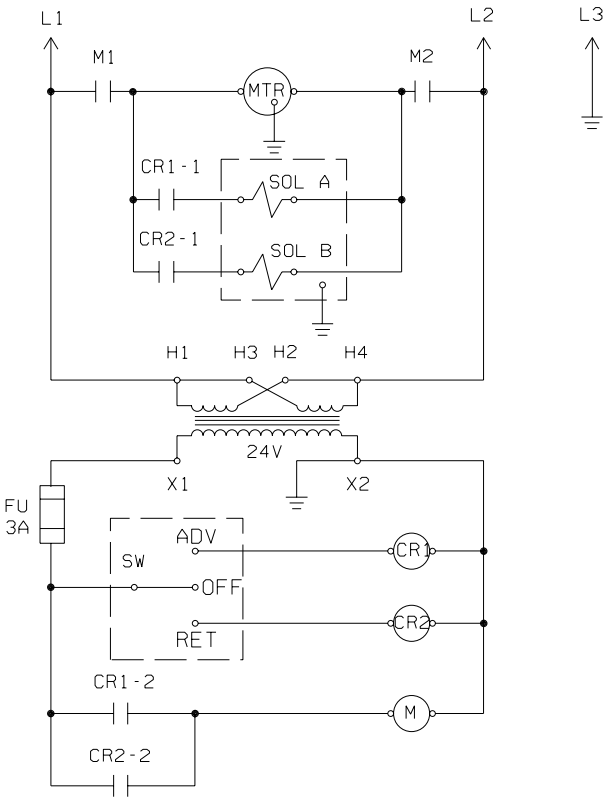
Item No.	Part No.	No. Req'd	Description
17	15565	27.5"	Electric Cord (16/4 SO)
18	210112	1	Strain Relief Bushing
19	350155	1	Cord Set (12/3 SJT0; 115 V.)
20	10197	3	Nut (#10-24)
21	11108	1	Lockwasher (#10)
22	11856	1	Machine Screw (#10-24 x 1" Lg.)
23	202778	1	Remote Hand Switch Ass'y (See sheet 14 of 14)
24	15993	1	Strain Relief Bushing
25	13532	1	Self-tapping Screw (#8-32 x 3/8 Lg.)
26	206857	1	Washer (For #8 bolt)
27	250150	1	Decal
28	39092	2	Relay
29	11539	4	Screw (#10-24 X 1/4 Lg.)
PARTS INCLUDED BUT NOT SHOWN			
	200188	1	Warning Decal

ELECTRICAL SCHEMATIC
(For units with 4-way, 2 & 3 position solenoid valves)
110/115 Volt, 50/60 Hz., Single Phase

WARNING
To help avoid personal injury, all electrical work must be done by a qualified electrician.

North American & International Color Codes

Conductors	North American	International
Line	Black.....	Brown
Neutral	White	Blue
Ground	Green	Green/Yellow



Note:
Unless otherwise specified, all units are to be wired for 110/115 V., 50/60 Hz. (CCW rotation for lead end)

Transformer connections are as shown for 110/115 V., 50/60 Hz.

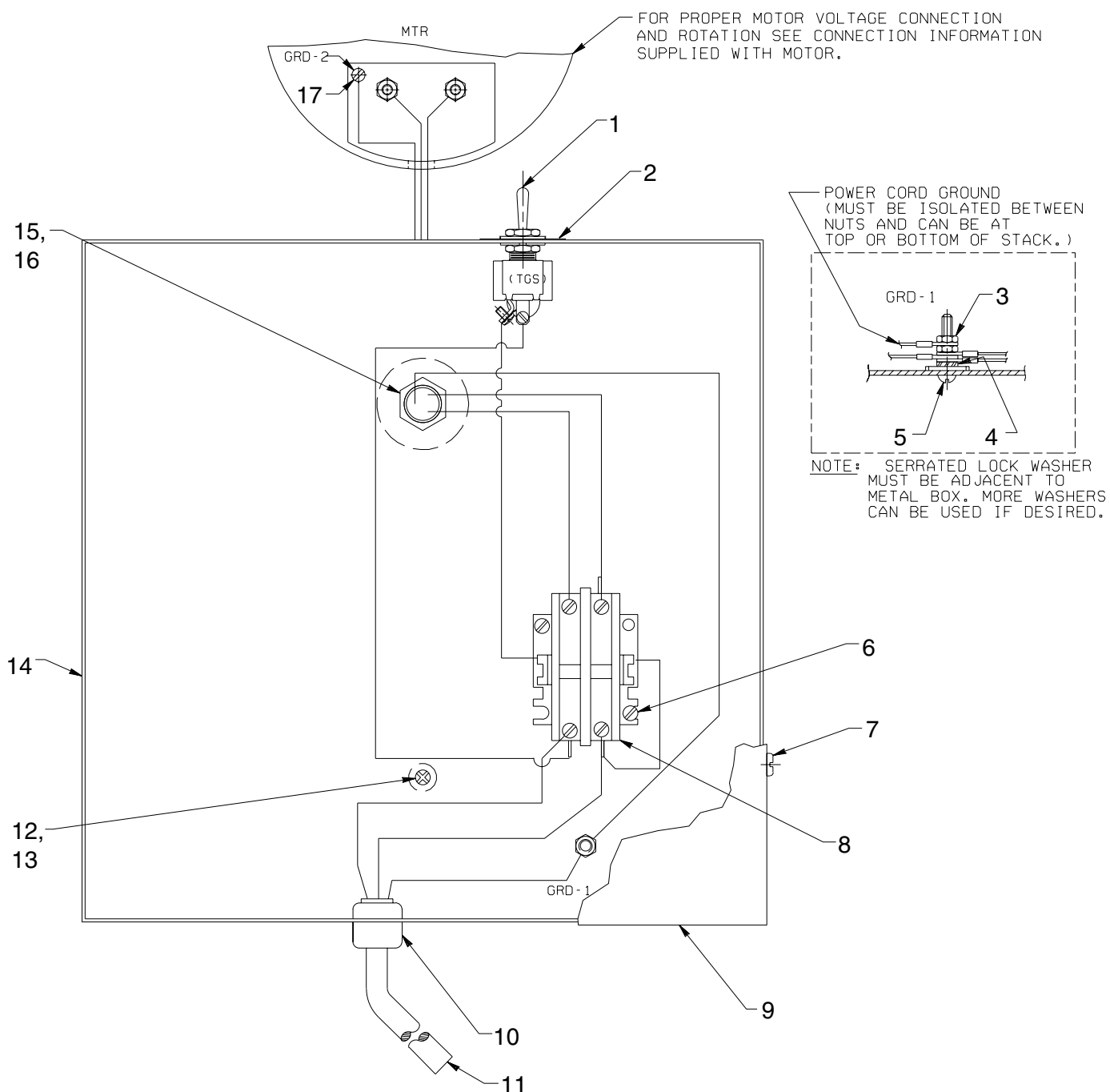
Motor is not wired for dual cycle. It is for either 50 or 60 cycle use. Refer to motor nameplate for proper cycle.

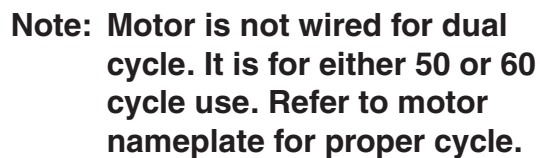
To Parts
List

ELECTRICAL CONTROL ASSEMBLY-220/230V

220/230 Volt, 50/60 Hz., Single Phase

(For units with manifold/manual valves)



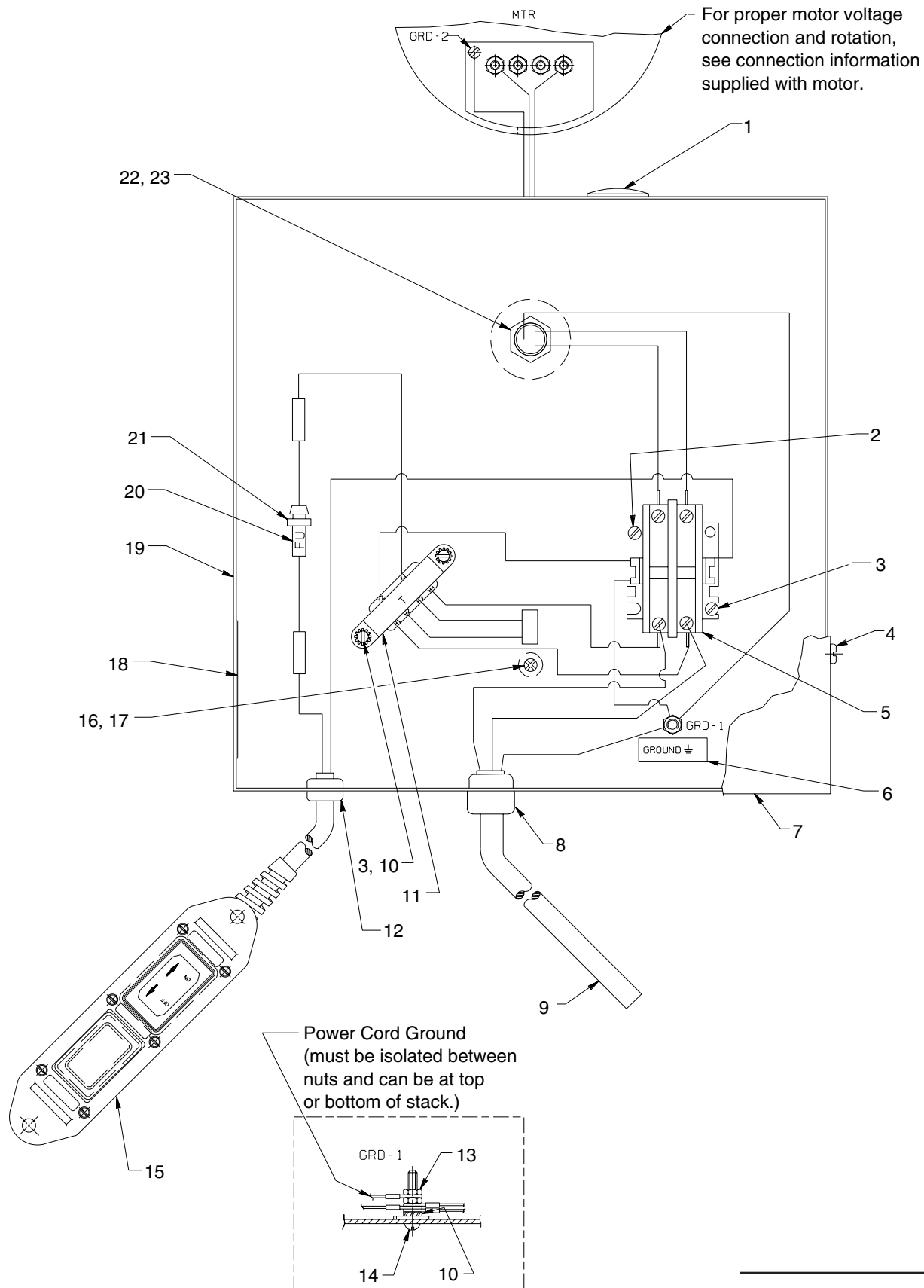


ELECTRICAL CONTROL ASSEMBLY

220/230 Volt, 50/60 Hz., Single Phase

(For units with manifold/manual valve and remote)

To Parts
List



Note: Serrated lockwasher must be adjacent to metal box. More washers can be used if desired.

Sheet No. 10 of 14

Issue Date: Rev. 1-30-96

Item No.	Part No.	No. Req'd	Description
1	17782	1	Snap Plug
2	10166	2	Machine Screw (#10-24 UNC X 1/2 Lg.)
3	14812	4	Tap Screw (#8-18 X 3/8 Lg.)
4	420718-4	1	Contactor
5	205189	1	Ground Decal
6	43126WH2	1	Control Box Cover
7	210112	1	Strain Relief Bushing
8	308752	8.5 ft.	Electrical Cable (14/3 SJT0)
9	11539	2	Machine Screw (#10-24 X 1/4 Lg.)
10	11108	3	Lockwasher (#10 External Tooth)
11	305665	1	Transformer
12	15993	1	Strain Relief Bushing
13	10197	2	Nut (#10-24 UNC)
14	11856	1	Machine Screw (#10-24 X 1" Lg.)

Item No.	Part No.	No. Req'd	Description
15	25017	1	Remote Hand Switch Ass'y (See sheet 13 of 14)
16	13532	1	Screw (#8-32 X 3/8 Lg.)
17	206857	1	Washer (For #10 Bolt)
18	250150	1	Decal
19	51218WH2	1	Electrical Control Box
20	206962	1	Fuse (3 amp)
21	16887	1	Fuse Holder
22	11202	1	Nipple
23	212434	1	Washer (For 7/8 bolt)



PARTS INCLUDED BUT NOT SHOWN

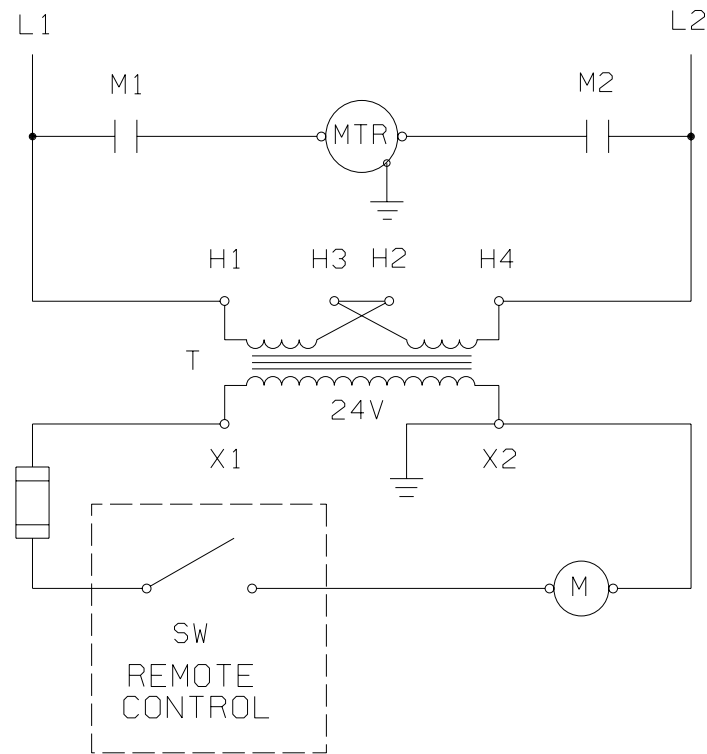
200188	1	Warning Decal
11209	1	Electrical Plug (For 230 v. units only)

ELECTRICAL SCHEMATIC
(For units with manifold/manual valve and remote)
220/230 Volt, 50/60 Hz., Single Phase

WARNING

To help avoid personal injury, all electrical work must be done by a qualified electrician.

Conductors	North American	International
Line	Black	Brown
Neutral	White	Blue
Ground	Green	Green/Yellow



NOTE:

Unless other specified, all units are to be wired for 220/230 V., 50/60 Hz. (CCW rotation from lead end)

Transformer connections are as shown for 220/230 V., 50/60 Hz.

For 110/115 V., 50/60 Hz. units, transformer connections to be as follows:

H1 & H3 to L1

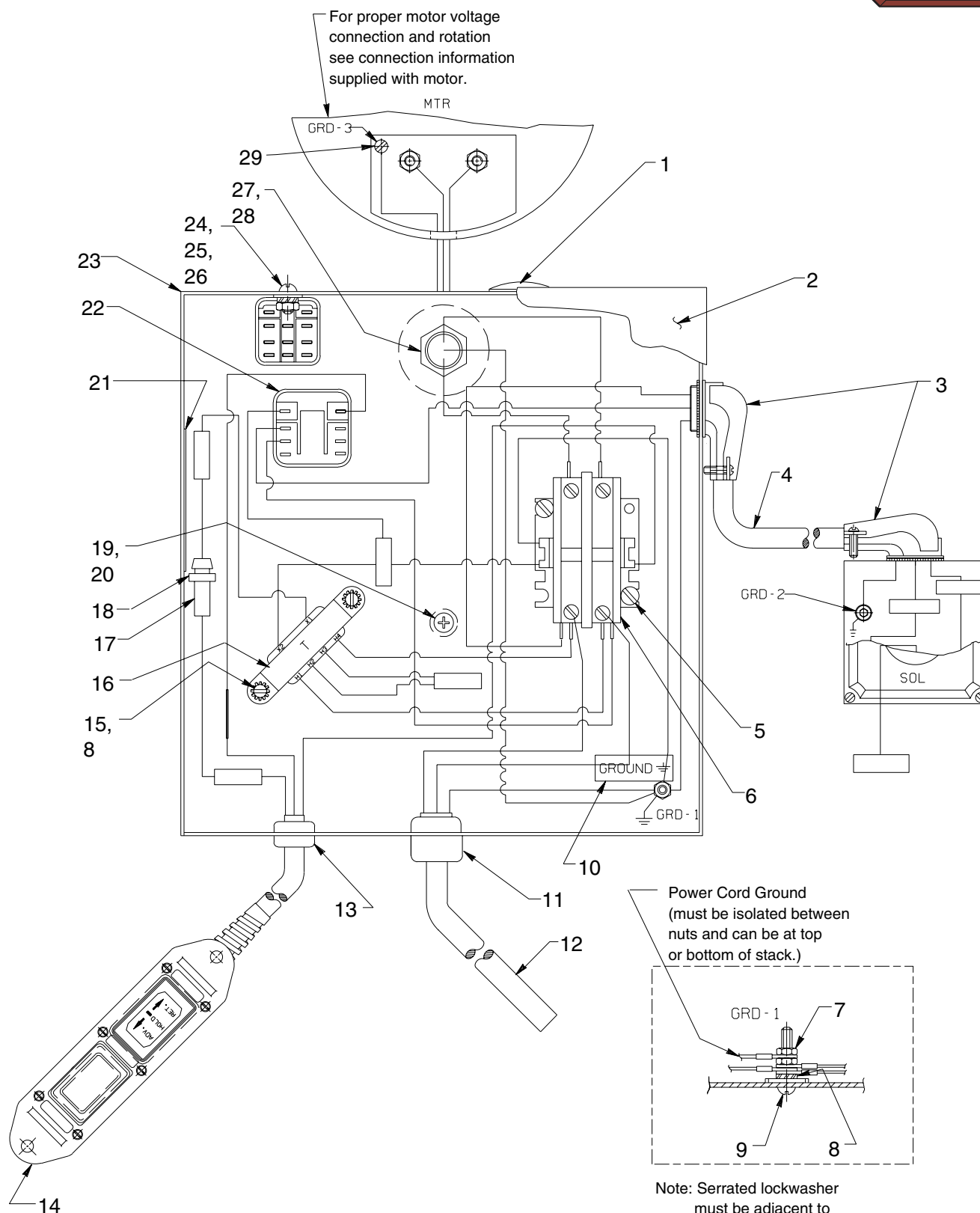
H2 & H4 to L2

Motor is not wired for dual cycle. It is for either 50 or 60 cycle use. Refer to motor nameplate for proper cycle.

Note: Shaded areas reflect last revision(s) made to this form.

ELECTRICAL CONTROL ASSEMBLY

220/230 Volt, 50/60 Hz., Single Phase

(For units with 3-way, 2 position solenoid valve)**To Parts
List**

Note: Serrated lockwasher must be adjacent to metal box. More washers can be used if desired.

Item No.	Part No.	No. Req'd	Description
1	17782	1	Snap Plug
2	43126WH2	1	Control Box Cover
3	11144	2	90° Elbow Connector
4	12293	2-1/2 ft.	Cable (16/3 SJTO)
5	10166	2	Machine Screw (#10-24 UNC X 1/2 Lg.)
6	420718-4	1	Contactor
7	10197	2	Nut (#10-24 UNC)
8	11108	3	Lockwasher (#10 External Tooth)
9	11856	1	Machine Screw (#10-24 X 1" Lg.)
10	205189	1	Ground Decal
11	210112	1	Strain Relief Bushing
12	308752	8 ft.	Cable (14/3 SJTO)
13	15993	1	Strain Relief Bushing
14	307491	1	Remote Hand Switch Ass'y (See back sheet 13 of 14)
15	11539	2	Machine Screw (#10-24 X 1/4 Lg.)
16	305665	1	Transformer

Item No.	Part No.	No. Req'd	Description
17	206962	1	Fuse (3 AMP, 250 V.)
18	16887	1	Fuse Holder
19	13532	1	Screw (#8-32 X 3/8 Lg.)
20	206857	1	Special Washer
21	250150	1	Decal
22	39092	1	Relay
23	51218WH2	1	Electrical Control Box
24	10159	2	Machine Screw (#6-32 UNC X 5/16 Lg.)
25	10195	2	Nut (#6-32 UNC)
26	15906	2	Lockwasher (#6 External Tooth)
27	11202	1	Nipple
28	212434	1	Washer
29	15468	1	Screw (#6-32 X 3/8 Lg.)

PARTS INCLUDED BUT NOT SHOWN

200188	1	Warning Decal
11209	1	Electrical Plug (For 230 V. units only)



ELECTRICAL SCHEMATIC

(For units with 3-way, 2 position solenoid valves)

220/230 Volt, 50/60 Hz., Single Phase

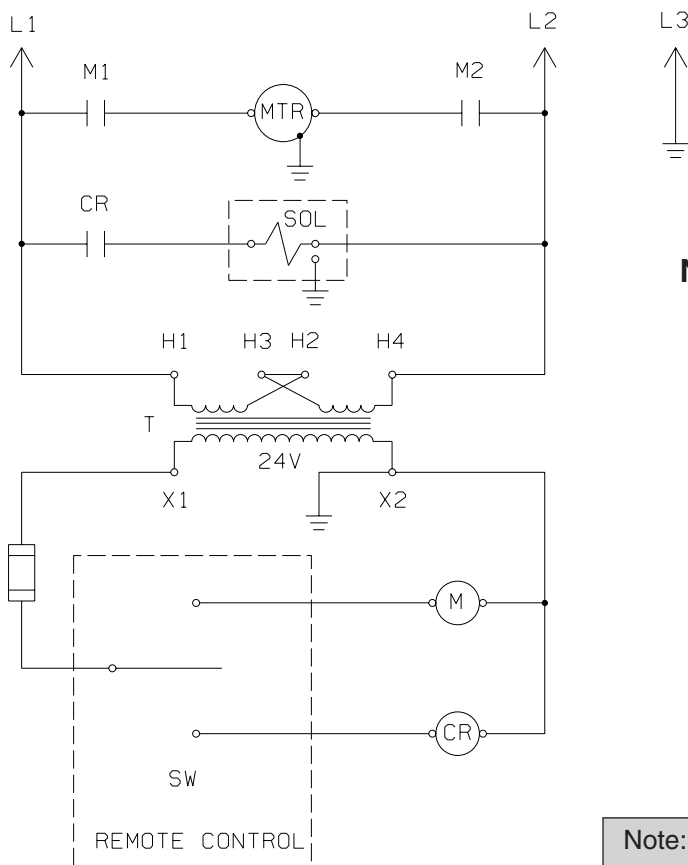


WARNING

To help avoid personal injury, all electrical work must be done by a qualified electrician.

North American & International Color Codes

Conductors	North American	International
Line.....	Black.....	Brown
Neutral.....	White.....	Blue
Ground.....	Green.....	Green/Yellow



Note:

Unless otherwise specified, all units are to be wired for 220/230 V., 50/60 Hz. (CCW rotation for lead end)

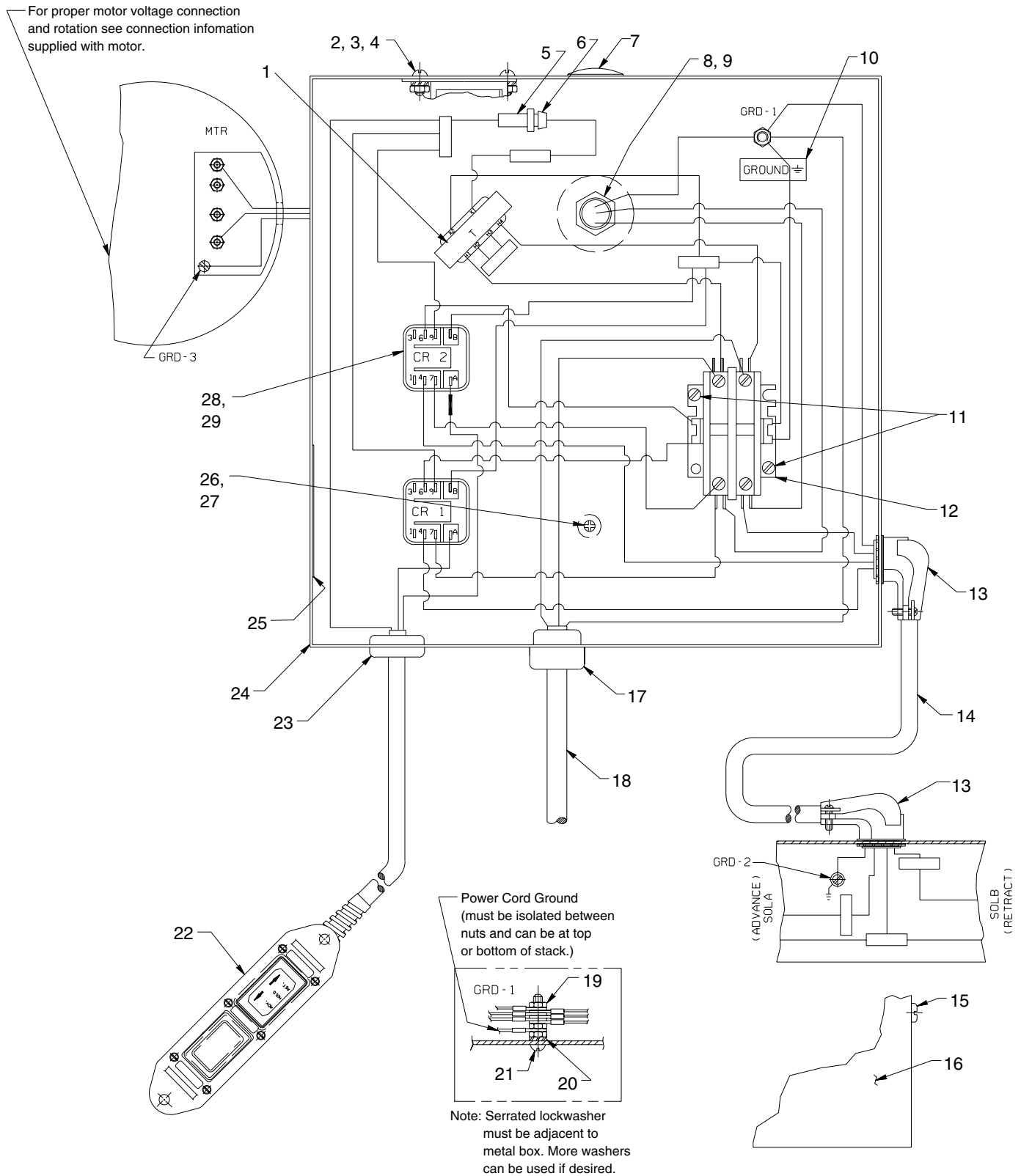
Transformer connections are as shown for 220/230 V., 50/60 Hz.

Motor is not wired for dual cycle. It is for either 50 or 60 cycle use. Refer to motor nameplate for proper cycle.

Note: Shaded areas reflect last revision(s) made to this form.

ELECTRICAL CONTROL ASSEMBLY 220/230 Volt, 50/60 Hz., Single Phase **(4-way, 2 & 3 position solenoid valves)**

**To Parts
List**



Item No.	Part No.	No. Req'd	Description
1	305665	1	Transformer
2	10159	2	Machine Screw (#6-32 UNC X 5/16 Lg.)
3	15906	2	Lockwasher (#6 External Tooth)
4	10195	2	Nut (#6-32 UNC)
5	206962	1	Fuse (3 AMP, 250 V.)
6	16887	1	Fuse Holder
7	17782	1	Snap Plug
8	11202	1	Nipple
9	212434	1	Washer (For 7/8 bolt)
10	205189	1	Ground Decal
11	10166	2	Machine Screw (#10-24 UNC X 1/2 Lg.)
12	420718-4	1	Contactor
13	11144	2	90° Elbow Connector
14	15565	2.3 ft.	Electrical Cable
15	14812	4	Tap Screw (#8-18 X 3/8 Lg.)
16	43126WH2	1	Control Box Cover
17	210112	1	Strain Relief Bushing

Item No.	Part No.	No. Req'd	Description
18	308752	12 ft.	Cable (14/3 SJTO)
19	10197	3	Nut (#10-24 UNC)
20	11108	1	Lockwasher (#10 External Tooth)
21	11856	1	Machine Screw (#10-24 X 1" Lg.)
22	202778	1	Remote Hand Switch Ass'y (See sheet 14 of 14)
23	15993	1	Strain Relief Bushing
24	51218WH2	1	Electrical Control Box
25	250150	1	Decal
26	13532	1	Screw (#8-32 X 3/8 Lg.)
27	206857	1	Special Washer
28	39092	1	Relay
29	11539	4	Machine Screw (#10-24 X 1/4 Lg.)

PARTS INCLUDED BUT NOT SHOWN

200188	1	Decal
11209	1	Electrical Plug (For 230 V. units only)



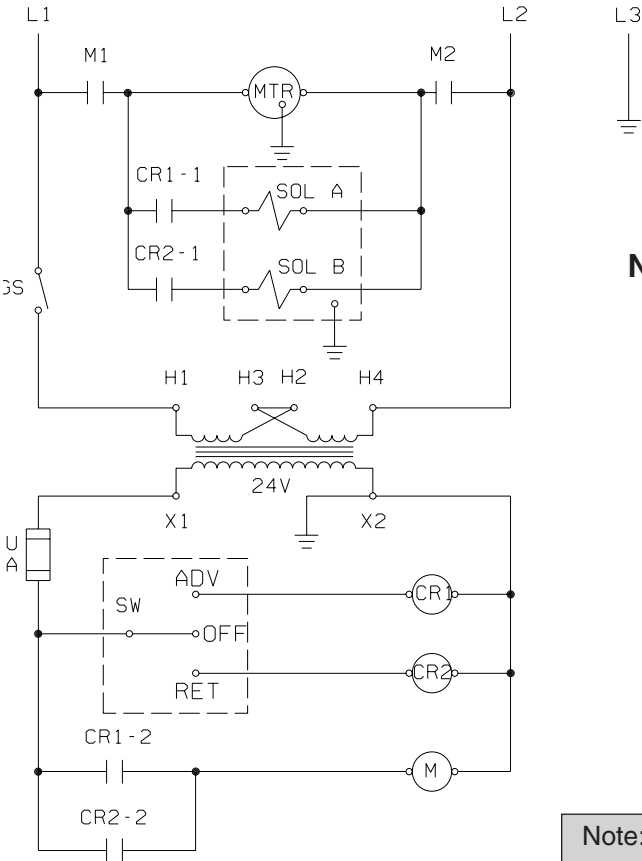
ELECTRICAL SCHEMATIC
(For units with 4-way, 2 & 3 position solenoid valves)
220/230 Volt, 50/60 Hz., Single Phase

WARNING

To help avoid personal injury, all electrical work must be done by a qualified electrician.

North American & International Color Codes

Conductors	North American	International
Line	Black	Brown
Neutral	White	Blue
Ground	Green	Green/Yellow

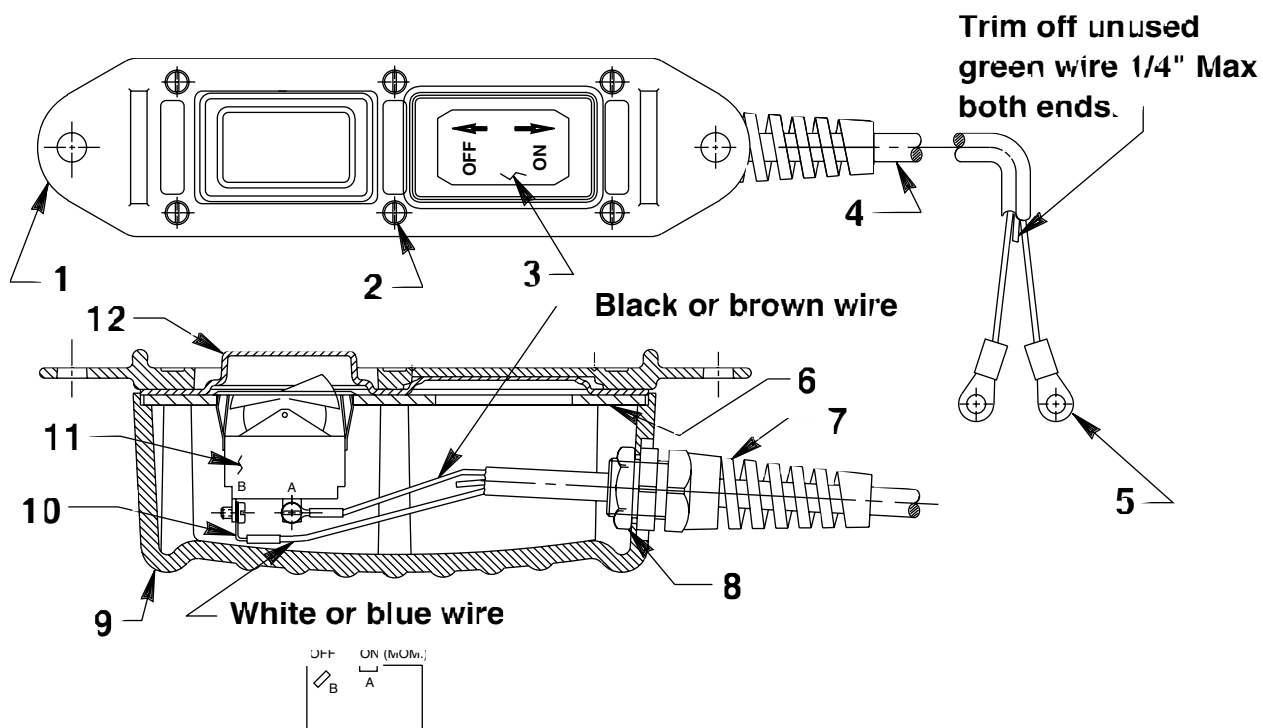


Note:
Unless otherwise specified, all units are to be wired for 220/230 V., 50/60 Hz. (CCW rotation for lead end)

Transformer connections are as shown for 220/230 V., 50/60 Hz.

Motor is not wired for dual cycle. It is for either 50 or 60 cycle use. Refer to motor nameplate for proper cycle.

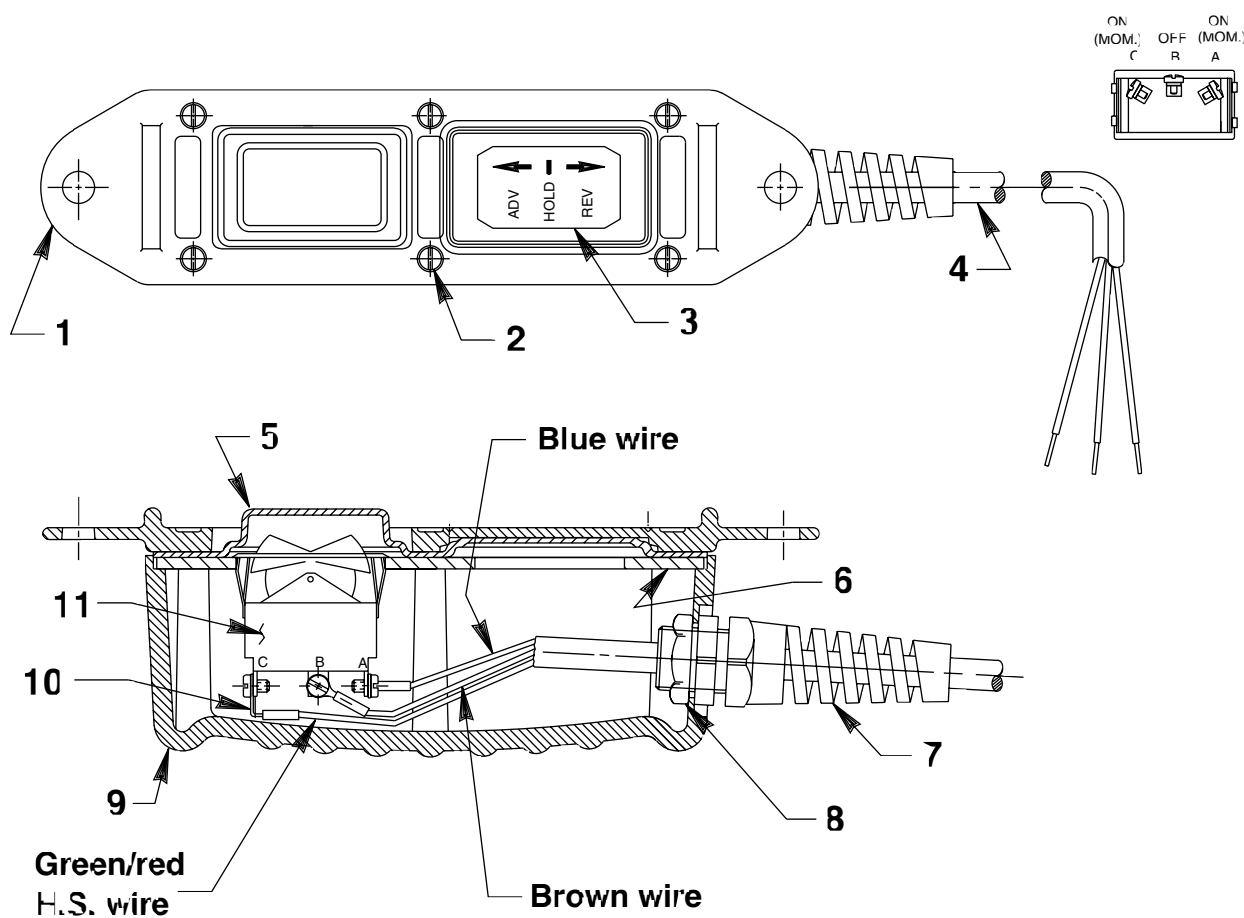
REMOTE HAND SWITCH ASSEMBLY No. 25017



Item No.	Part No.	No. Req'd	Description
1	420050-1	1	Cover
2	250248	6	Screw (4-24 x 3/4 Lg.)
3	202763	1	Decal
4	12908	11 ft.	Cable (18/3 SJTO)
5	10458	2	Ring Terminal
6	420050-3	1	Switch Mounting Plate
7	251818	1	Strain Relief Connector
8	251802	1	Locknut (3/4-16 UNF; Torque to 30/35 in. lbs.)
9	420050-4	1	Switch Housing
10	10525	2	Ring Terminal
11	16772	1	Rocker Switch
12	420050-2	1	Gasket

Note: This page was added to this form.

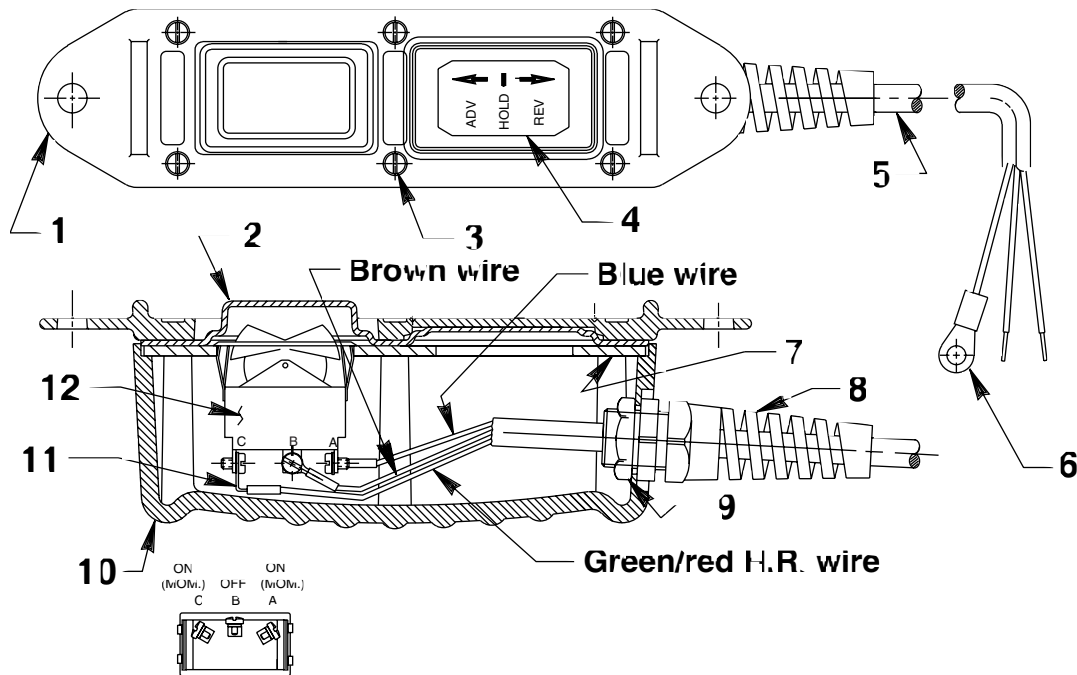
REMOTE HAND SWITCH ASSEMBLY No. 307491



Item No.	Part No.	No. Req'd	Description
1	420050-1	1	Cover
2	250248	6	Screw (4-24 x 3/4 Lg.)
3	202776	1	Decal
4	12293	25 ft.	Cable (16/3 SJTO)
5	420050-2	1	Gasket
6	420050-3	1	Switch Mounting Plate
7	251818	1	Strain Relief Connector
8	251802	1	Locknut (3/4-16 UNF; Torque to 30/35 in. lbs.)
9	420050-4	1	Switch Housing
10	12311	3	Ring Tongue Terminal
11	16773	1	Rocker Switch

Note: This page was added to this form.

REMOTE HAND SWITCH ASSEMBLY No. 202778



Item No.	Part No.	No. Req'd	Description
1	420050-1	1	Cover
2	420050-2	1	Gasket
3	250248	6	Screw (4-24 x 3/4 Lg.)
4	202776	1	Decal
5	12908	10 ft.	Cable (18/3 SJTO)
6	10458	2	Ring Terminal
7	420050-3	1	Switch Mounting Plate
8	251818	1	Strain Relief Connector
9	251802	1	Locknut (3/4-16 UNF; Torque to 30/35 in. lbs.)
10	420050-4	1	Switch Housing
11	10525	3	Ring Terminal
12	16773	1	Rocker Switch

Note: This page was added to this form.