



Hydraulic Technologies
 655 Eisenhower Drive
 Owatonna, MN 55060-0995 USA
 Phone: (507) 455-7000
 Tech. Services: (800) 533-6127
 Fax: (800) 955-8329
 Order Entry: (800) 533-6127
 Fax: (800) 283-8665
 International Sales: (507) 455-7290
 Fax: (507) 455-7063

Form No. 101362

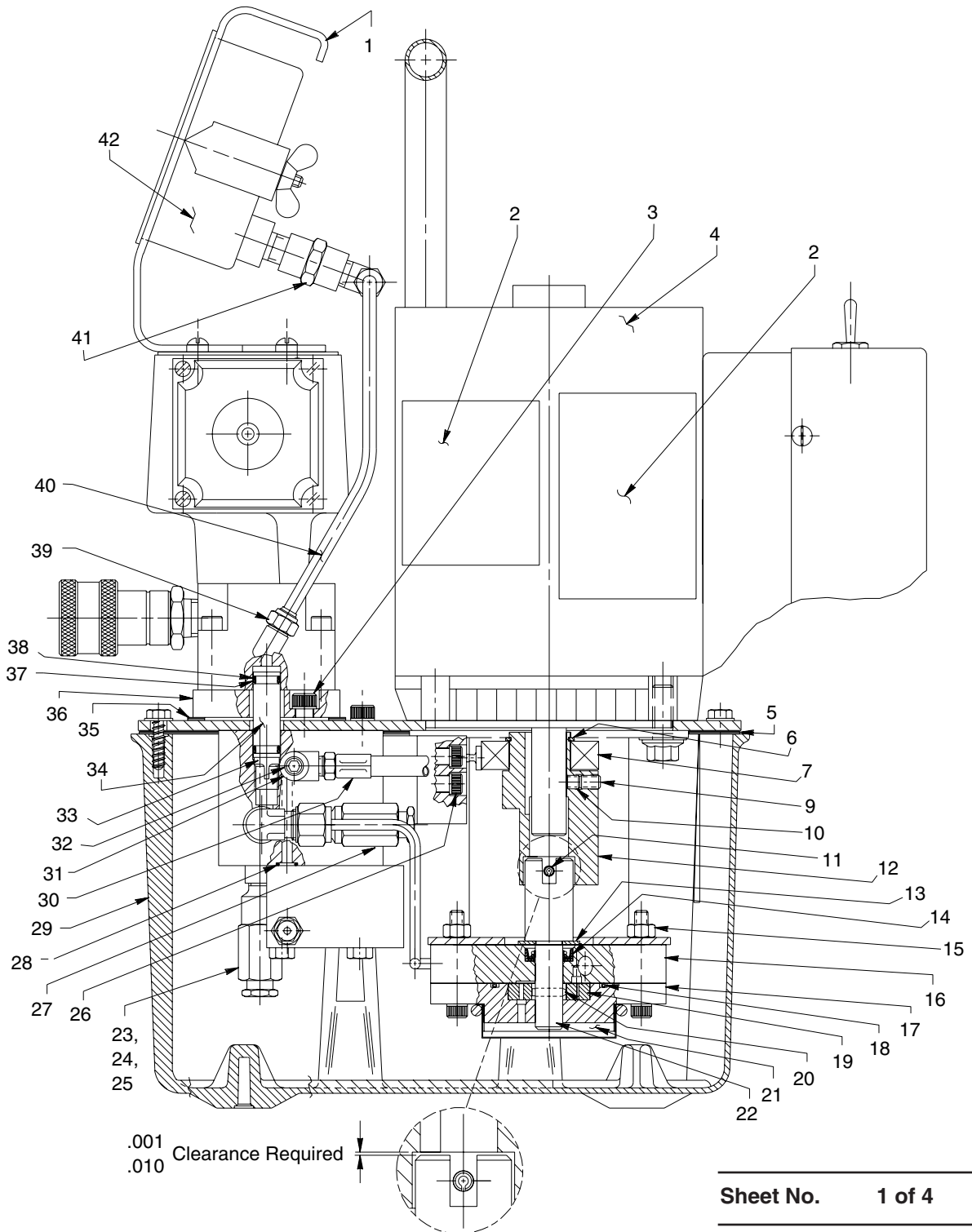
Parts List for:

9U-6950
 9U-7712

TWO-STAGE ELECTRIC HYDRAULIC PUMP

Max. Capacity: 10,000 PSI

SIDE VIEW



Sheet No. 1 of 4

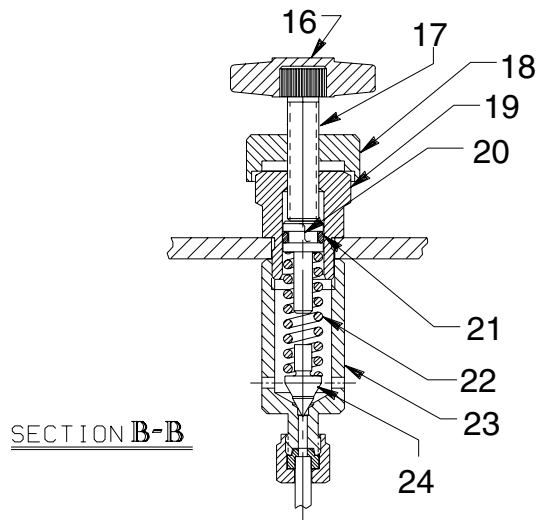
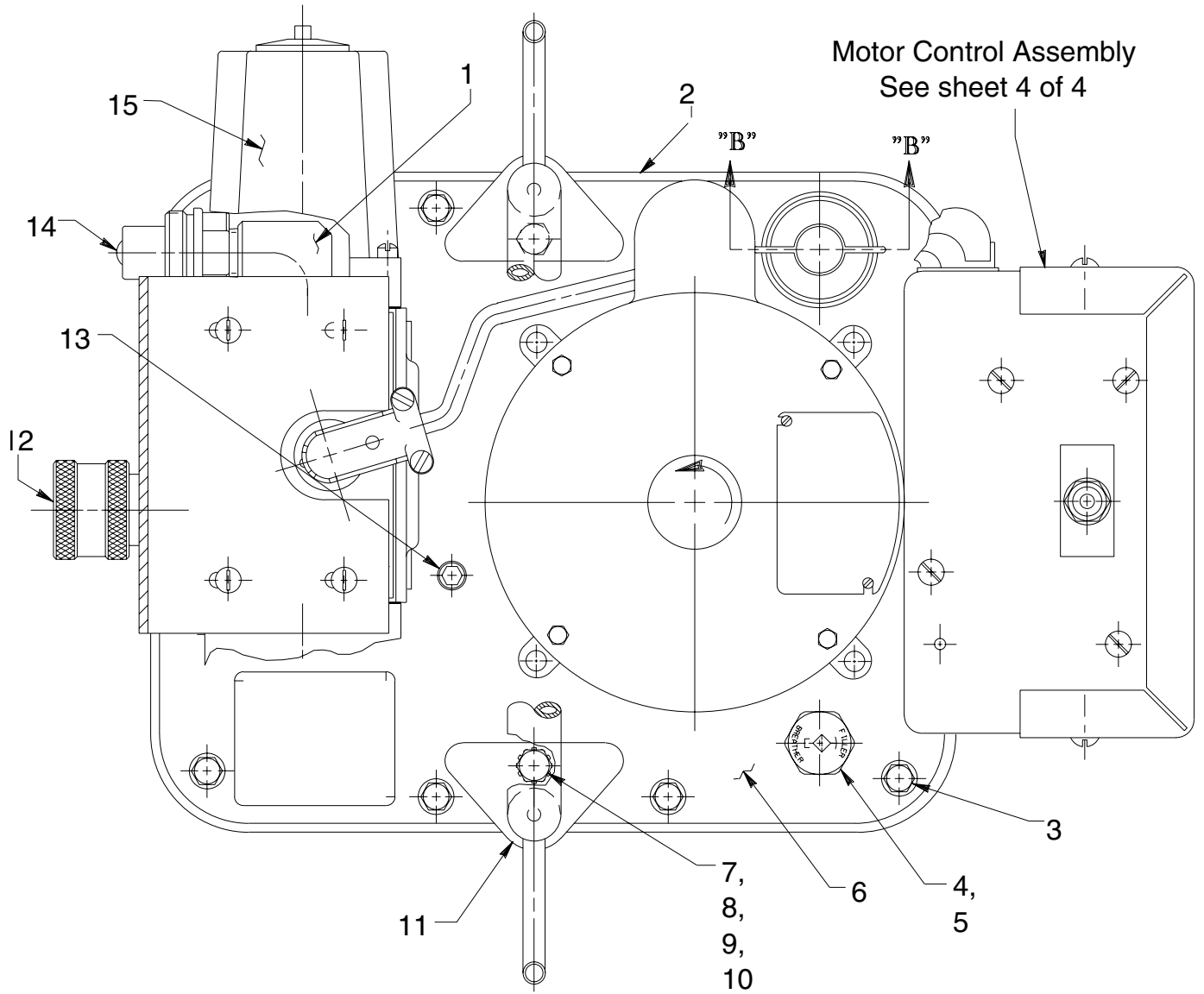
Issue Date: Rev. 12-5-94

Parts List, Form No. 101362, Back sheet 1 of 4

Item No.	Part No.	No. Req'd	Description
1	420764BK2	1	Gauge Mounting Bracket
2	200188	1	Decal (Two portions - Important & Warning)
3	10030	2	Cap Screw (5/16-18 UNC X 3/4 Lg.)
4	58196WH2	1	Electric Motor
5	40164	1	Gasket
6	209798	1	Retaining Ring
7	209805	1	Ball Bearing
9	10519	1	Set Screw (1/4-20 UNC X 3/8 Lg.; Torque to 60/80 in. lbs.)
10	10136	1	Set Screw (1/4-20 UNC X 1/4 Lg.; Torque to 60/80 in. lbs.)
11	10973	1	Slotted Spring Pin
12	45596	1	Eccentric
13	12595	1	Washer (1-1/8 X 1/2 X .077 Thk.)
14	304830	1	Oil Seal
15	10199	2	Hex Nut (1/4-20 UNC)
16	61170	1	Housing
17	61169	1	Gerotor Housing
18	10922	1	O-ring (2-1/8 X 1-15/16 X 3/32, -135)
19	304826	1	Gerotor
20	209794	1	Gerotor Drive Pin
21	21846	1	Filter Support
22	304835	1	Drive Shaft
23	15456	1	Straight Fitting
24	18841	1	Pipe Connector
25	21278-10	1	Relief Valve Assembly (Set at 900/1000 PSI)
26	10022	4	Screw (1/4-20 UNC X 1-1/2 Lg.; Torque to 180/200 in. lbs.)
27	21278	1	Relief Valve Assembly (Set at 10,100/10,700 PSI)
28	10266	1	O-ring (3/8 X 1/4 X 1/16, -010)
29	61165	1	Reservoir
30	304819	1	Hose Assembly
31	19463	1	Tee
32	10427	1	Pressure Plug
33	209795	1	Outlet Ball Stop
34	209809	1	Coupling
35	200395	1	Gasket
36	52165	1	Manifold
37	11863	2	Backup Washer (-012; Teflon)
38	10268	2	O-ring (1/2 X 3/8 X 1/16, -012)
39	205792	2	Elbow
40	350798	1	Oil Tube
41	12740	1	Pipe Connector
42	251412	1	Gauge

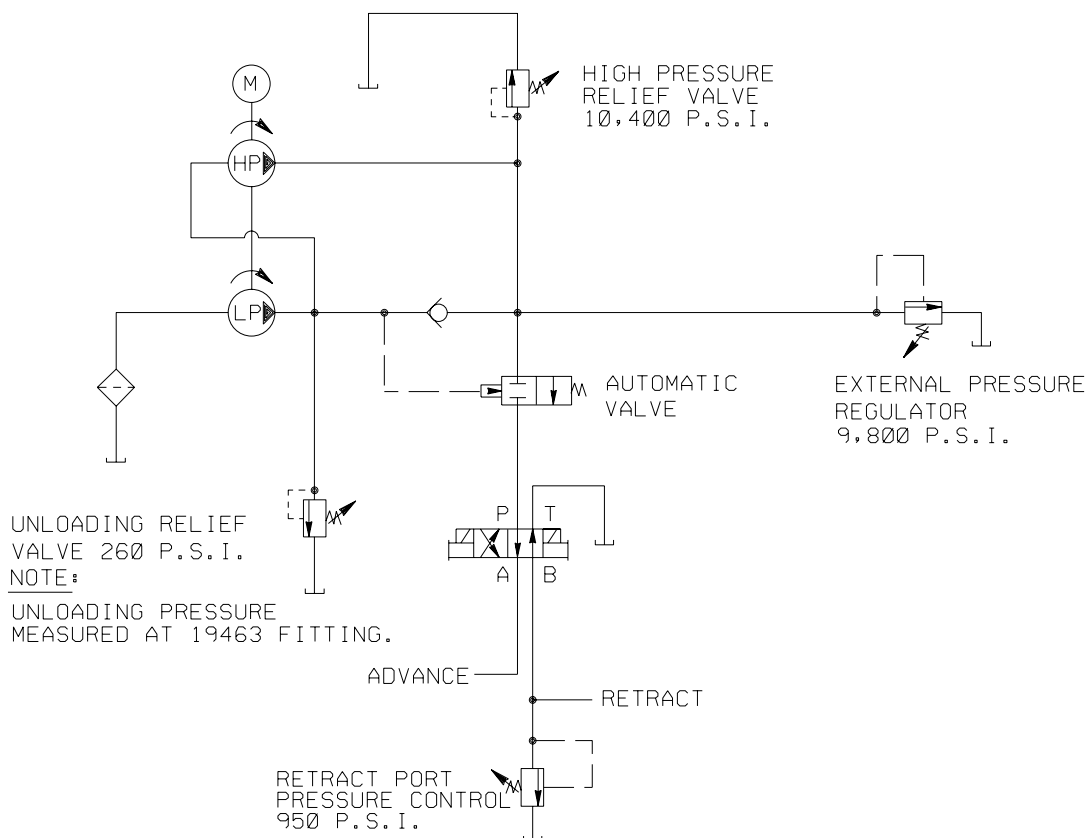
Note: Shaded areas reflect last revision(s) made to this form.
Also removed Item 8, 304886 counterweight.

TOP VIEW & SECTION B-B

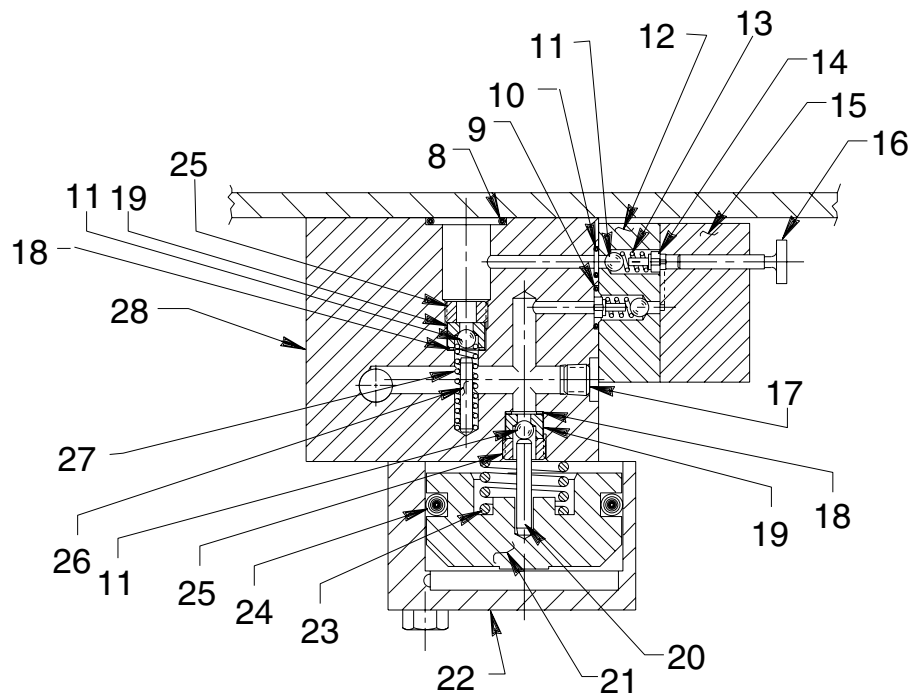
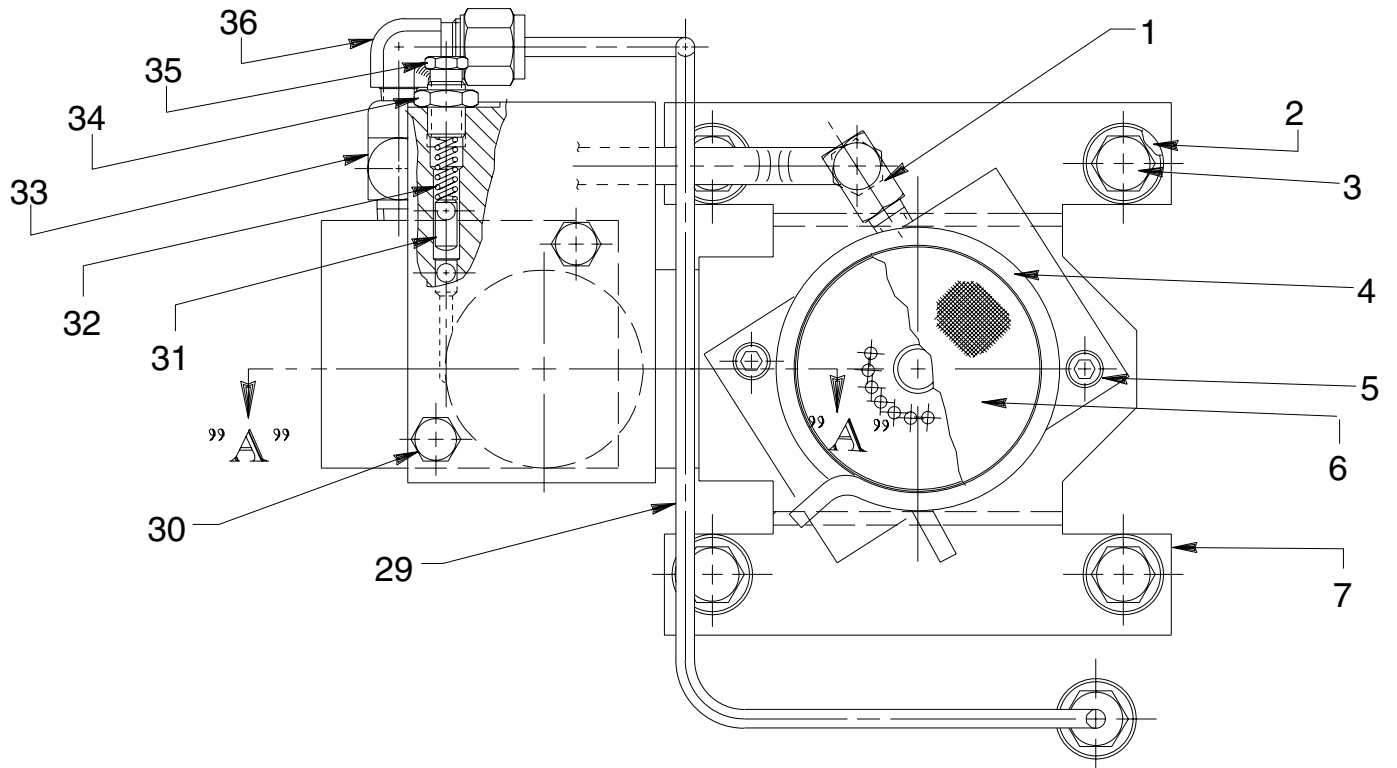


Item No.	Part No.	No. Req'd	Description
1	250381	1	Fitting
2	13758	2	Decal
3	209799	10	Cap Screw (1/4-10 X 7/8 Lg. Self-tapping; Torque to 50/60 in. lbs.)
4	20937	1	Vent Cap
5	200415	1	Rubber Gasket
6	46064	1	Cover Plate
7	10009	2	Cap Screw (1/4-20 UNC X 3/4 Lg.; Torque to 60/80 in. lbs.)
8	11351	2	Washer (1/4 External Tooth)
9	10245	2	Washer (For 1/4 bolt)
10	10199	2	Hex Nut (1/4-20 UNC)
11	58442BK2	1	Handle
12	251410	1	Coupler
13	10030	1	Cap Screw (5/16-18 UNC X 3/4 Lg.)
14	251411	1	Coupler
15	61084	1	Solenoid Valve (For 9U-7712)
	61084-230	1	Solenoid Valve (For 9U-6950)
16	205788	1	Thumb Screw
17	208148	1	Cap Screw (3/8-24 X 1-1/2 Lg.)
18	24573	1	Knob Locknut
19	21305	1	Valve Cap
20	21306	1	Spring Guide
21	10268	1	O-ring (1/2 X 3/8 X 1/16, -012)
22	10495	1	Compression Spring (1/2 O.D. X 1-5/8 Lg.)
23	22361	1	Body
24	21046	1	Valve Stem

HYDRAULIC SCHEMATIC



BOTTOM VIEW & SECTION A-A

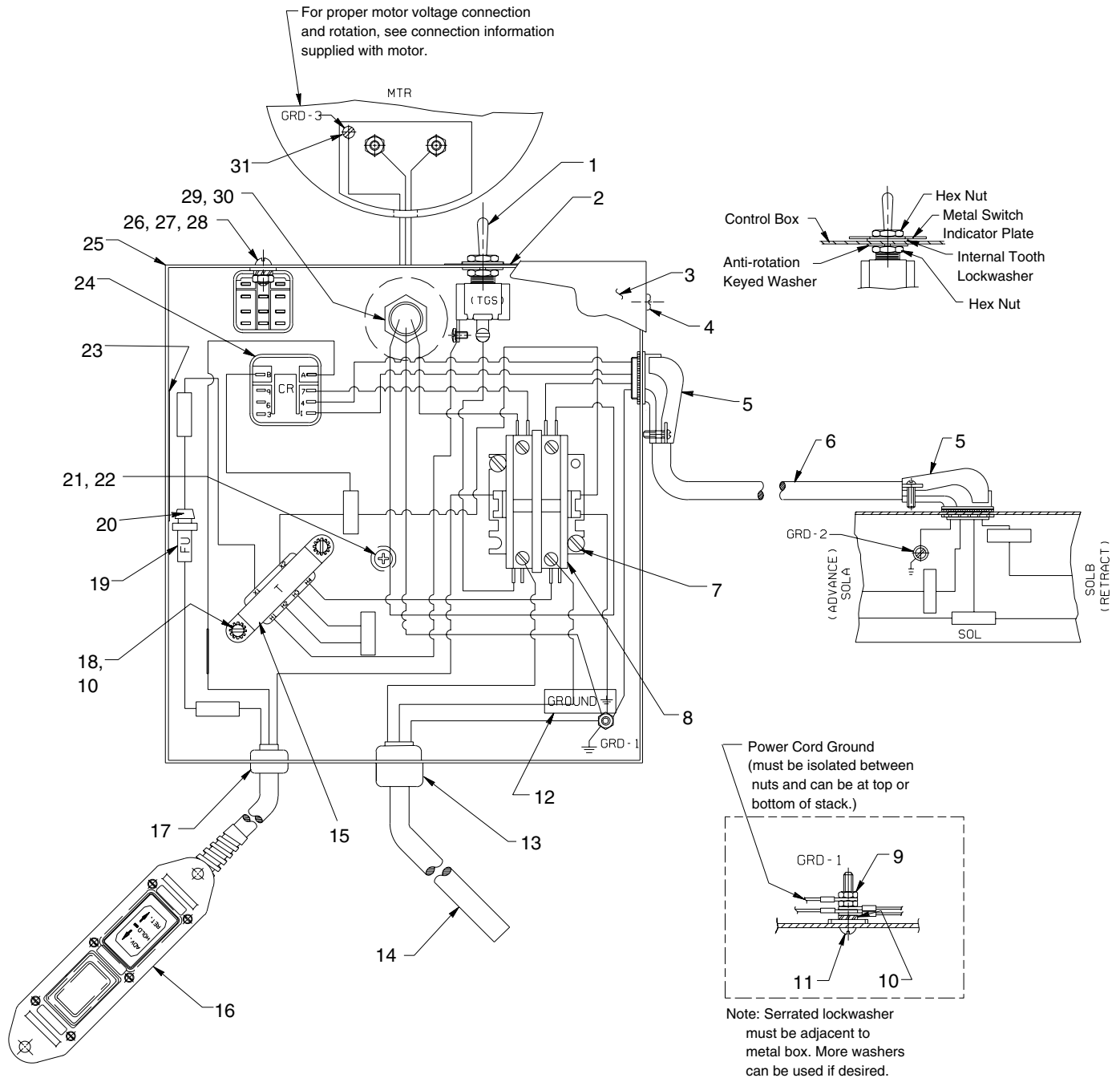


SECTION A-A

Parts List, Form No. 101362, Back sheet 3 of 4

Item No.	Part No.	No. Req'd	Description
1	14440	1	90° Elbow Fitting
2	10258	4	Washer (For 3/8 bolt)
3	213663	4	Cap Screw (3/8-16 UNC X 1" Lg.; Torque to 230/250 in. lbs.)
4	11461	1	Hose Clamp
5	10854	2	Cap Screw (1/4-20UNC X 1-3/4Lg.; Toque to 60/80 in. lbs.)
6	21608	1	Filter
7	52174	1	Pump Mounting Bracket
8	10273	1	O-ring (13/16 X 5/8 X 3/32, -114)
9	14763	1	O-ring (7/16 X 5/16 X 1/16, -011)
10	10265	1	O-ring (5/16 X 3/16 X 1/16, -008)
11	12223	4	Ball (3/16 Dia.)
12	45559	1	Block
13	10445	2	Compression Spring (5/32 O.D. X 3/4 Lg.)
14	24549	2	Ball Guide
15	45560	1	Block
16	304820	1	Piston
17	15130	1	Plug (1/16 NPTF)
18	10442	2	Washer (3/8 X 1/4 X 1/32)
19	209787	2	Replaceable Seat
20	211843	1	Dowel Pin (3/16 Dia. X 1" Lg.; Note: Install with radius end out.)
21	46063	1	Piston
22	52167	1	Block
23	16346	1	Compression Spring (1" O.D. X 7/8 Lg.)
24	10283	1	O-ring (2" X 1-5/8 X 3/16, -326)
25	209797	2	Hollow Lock Screw (7/16-20 UNF-3A; Torque to 180/200 in. lbs.)
26	12149	1	Pin (1/8 Dia. X 3/4 Lg.)
27	16057	1	Compression Spring (3/16 O.D. X 1" Lg.)
28	61167	1	Body
29	306171	1	Pressure Regulator Line
30	13037	2	Cap Screw (1/4-20 UNC X 2" Lg.; Torque to 40/50 in. lbs.)
31	15156	1	Pin (1/4 Dia. X 1/2 Lg.; Note: Install tapered end toward spring.)
32	11221	1	Spring (1/4 O.D. X 1" Lg.)
33	18969	1	Tee
34	10386	1	Nut (3/8-24 UNF)
35	29786	1	Valve Adjusting Screw
36	11278	1	Elbow Tube

MOTOR CONTROL ASSEMBLY

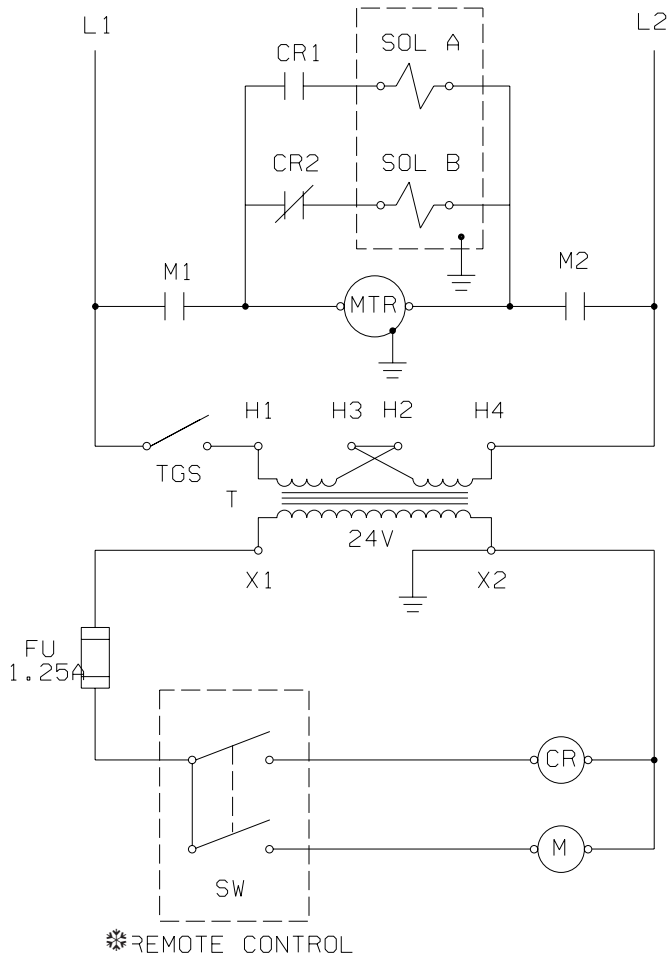


Item No.	Part No.	No. Req'd	Description
1	12301	1	Toggle Switch
2	13890	1	Indicator Plate
3	43126WH2	1	Control Box Cover
4	14812	4	Tap Screw (#8-18 X 3/8 Lg.)
5	11144	2	90° Elbow Connector
6	15565	2.5 ft.	Electrical Cable
7	10166	2	Machine Screw (#10-24 UNC X 1/2 Lg.)
8	420718-4	1	Contactor
9	10197	2	Nut (#10-24 UNC)
10	11108	3	Lockwasher (#10 External Tooth)
11	11856	1	Machine Screw (#10-24 X 1" Lg.)
12	205189	1	Ground Decal
13	210112	1	Strain Relief Bushing
14	24733	1	Cord Set (115 V.; For 9U-6950)
	12293	8 ft.	Cable (16/3 SJTO, 230 V.; For 9U-7712)
15	305665	1	Transformer
16	250023	1	Hand Switch Assembly

Item No.	Part No.	No. Req'd	Description
17	15993	1	Strain Relief Bushing
18	11539	2	Machine Screw (#10-24 X 1/4 Lg.)
19	250442	1	Fuse
20	16887	1	Fuse Holder
21	13532	1	Screw (#8-32 X 3/8 Lg.)
22	206857	1	Washer (For #10 Bolt)
23	250440	1	Decal
24	39092	1	Relay
25	51218WH2	1	Electrical Control Box
26	10159	2	Machine Screw (#6-32 UNC X 5/16 Lg.)
27	10195	2	Nut (#6-32 UNC)
28	15906	2	Lockwasher (#6 External Tooth)
29	11202	1	Nipple
30	212434	1	Washer (For 7/8 bolt)
31	15468	1	Screw (#6-32 X 3/8 Lg.)
PARTS INCLUDED BUT NOT SHOWN			
	200188	1	Warning Decal

ELECTRICAL SCHEMATIC 115/220 V., 50/60 Hz., Single Phase

WARNING: To help avoid personal injury, all electrical work must be done by a qualified electrician.



Transformer Connections

115 V. Units

H1 & H3 to L1
H2 & H4 to L2

230 V. Units

H1 to L1
H4 to L2
H2 to H3

Note: 9U-7712 is factory wired at 115 V., 60 Hz.
9U-6950 is factory wired at 220 V., 50 Hz.

* Progressive Remote Control Switch

Position 1 (off) = Motor off, Solenoid off
Position 2 (Ret.) = Motor on, Solenoid "B" on
Position 3 (Adv.) = Motor on, Solenoid "A" on (Momentary)
Motor stays on between Position 2 & 3.