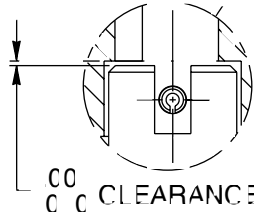
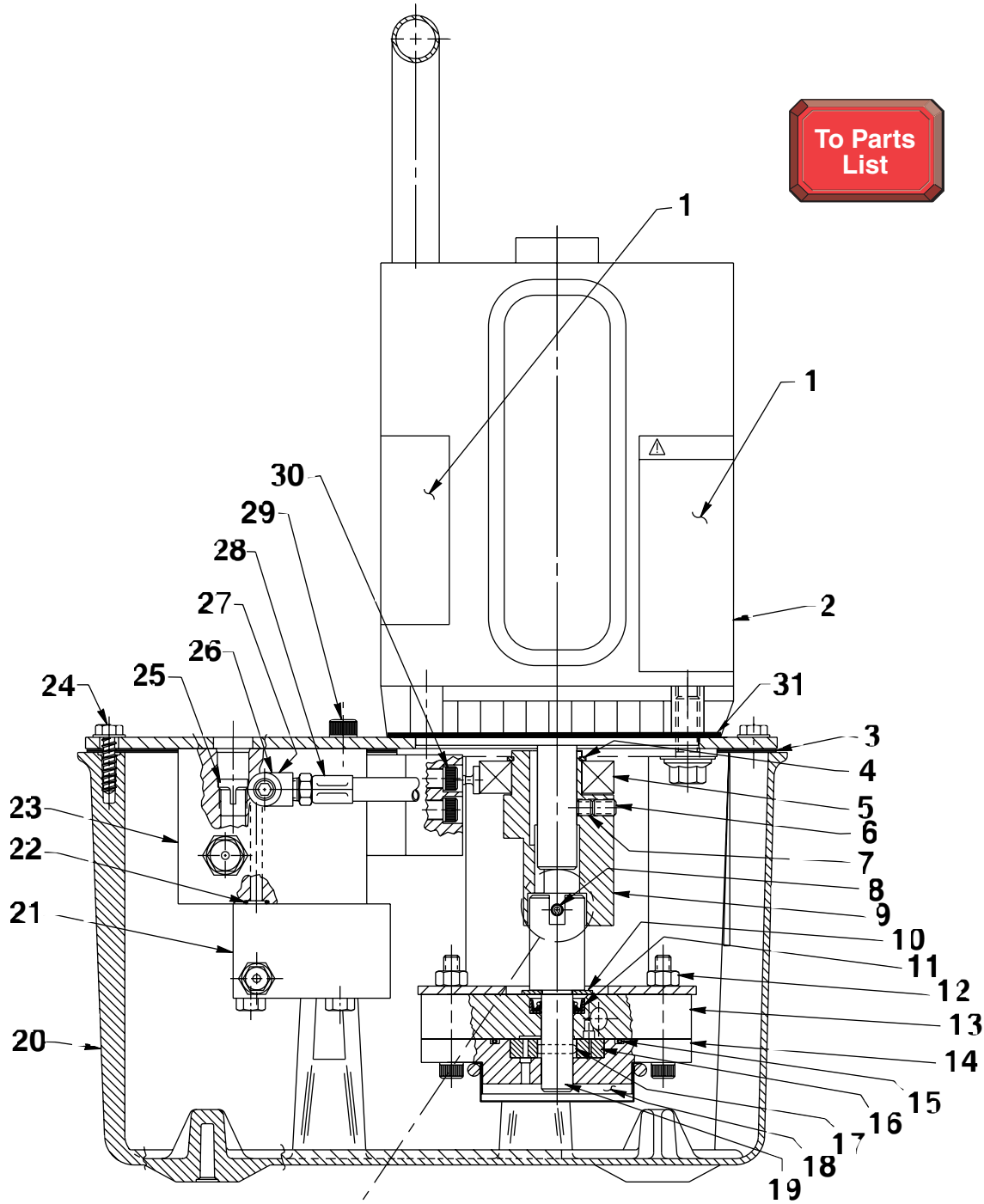


HYDRAULIC PUMP



Item No.	Part No.	No. Req'd	Description
1	•†*200188	1	Decal (Important & Warning portions; For electric versions only)
2	58196WH2	1	Electric Motor (110/220 v., 50/60 Hz.)
	13643	1	Air Motor (See NOTE below)
3	40164	1	Reservoir Gasket
4	209798	1	Retaining Ring (1-3/16 Shaft)
5	209805	1	Ball Bearing
6	10519	1	Set Screw (1/4-20 UNC X 3/8 Lg.; Torque to 60/80 in. lbs.)
7	10136	1	Set Screw (1/4-20 UNC x 1/4 Lg.; Torque to 60/80 in. lbs.)
8	10973	1	Slotted Spring Pin (3/16 Dia. X 1-1/4 Lg.; Note: Locate slot as shown.)
9	45596	1	Eccentric
10	12595	1	Brass Washer (1-1/8 X 1/2 X .077 Thk.)
11	*304830	1	Oil Seal (Nitrile)
	†305939	1	Oil Seal (Viton)
	•250156	1	Oil Seal (EPR)
12	10199	2	Hex Nut (1/4-20 UNC)
13	61170	1	Housing
14	61169	1	Lower Gerotor Housing
15	*10922	1	O-ring (2-1/8 X 1-15/16 X 3/32; Nitrile)
	†19016	1	O-ring (2-1/8 X 1-15/16 X 3/32; Viton)
	•250158	1	O-ring (2-1/8 X 1-15/16 X 3/32; EPR)
16	304826	1	Gerotor Set
17	209794	1	Gerotor Drive Pin
18	21846	1	Filter Support
19	304835	1	Drive Shaft
20	61165	1	Reservoir (plastic)
	64538	1	Reservoir (metal)
21	52167	1	Block
22	*10266	1	O-ring (3/8 X 1/4 X 1/16; Nitrile)
	†11438	1	O-ring (3/8 X 1/4 X 1/16; Viton)
	•17715	1	O-ring (3/8 X 1/4 X 1/16; EPR)
23	61167	1	Check Body
24	209799	10	Screw (For plastic reservoir)
	10177	10	Screw (For metal reservoir)
25	209795	1	Outlet Ball Stop
26	19463	1	Tee Fitting
27	10427	1	Plug Fitting
28	304819	1	Hose Assembly (For pumps with nitrile or viton seals)
	80590	1	Hose
	12696	2	Fitting } For pumps with EPR seals
29	10030	1	Screw (5/16-18 UNC X 3/4 Lg.; Torque to 220/240 in. lbs.)
30	10022	4	Screw (1/4-20 UNC X 1-1/4 Lg.; Torque to 180/200 in. lbs.)
31	351060	1	Gasket

PARTS INCLUDED BUT NOT SHOWN

309219	2	Trade Name Decal
16896	1	Electrical Plug (For PE17A)
17866	1	Conduit Connector (For PE17A & PE17C)

Part numbers marked with an asterisk (*) are contained in Standard Repair Kit No. 3000430.

Part numbers marked with a dagger (†) are contained in Viton Seal Kit No. 300920.

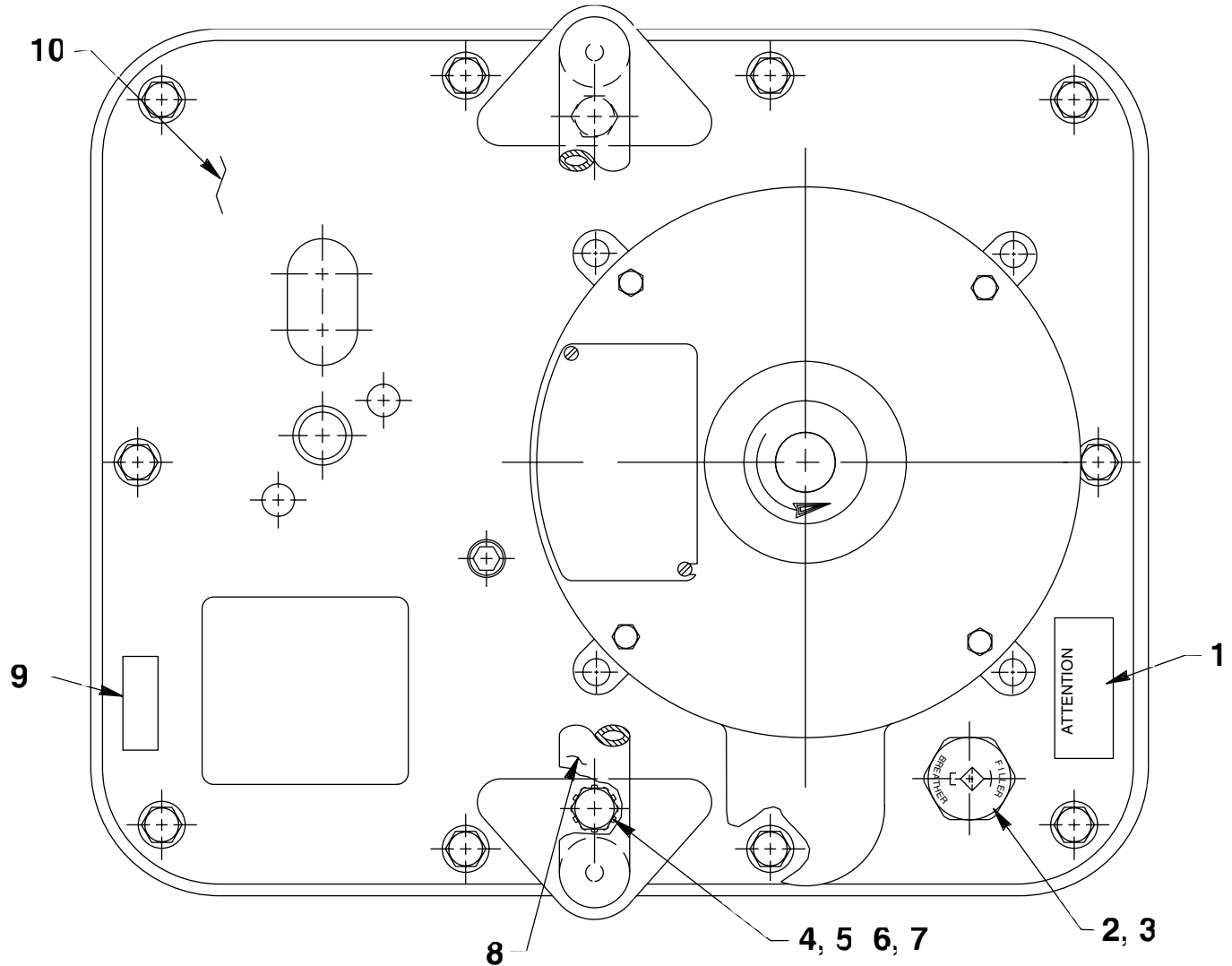
Part numbers marked with a bullet (•) are contained in EPR Seal Kit No. 300648.

NOTE: For air motor repair kit, order no. 252100.

Note: Shaded areas reflect last revision(s) made to this form.



TOP VIEW



Item No.	Part No.	No. Req'd	Description
1	205714	1	Attention Decal (For pumps with viton seals)
	250328	1	Attention Decal (For pumps with EPR seals)
2	20937	1	Vent Cap
3	200415	1	O-ring (13/16 X 5/8 X 3/32)
4	10009	2	Cap Screw (1/4-20 UNC X 3/4 Lg.; Torque to 60/80 in. lbs.)
5	11351	2	Washer (1/4 External Tooth)
6	10245	2	Lockwasher (For 1/4 bolt)

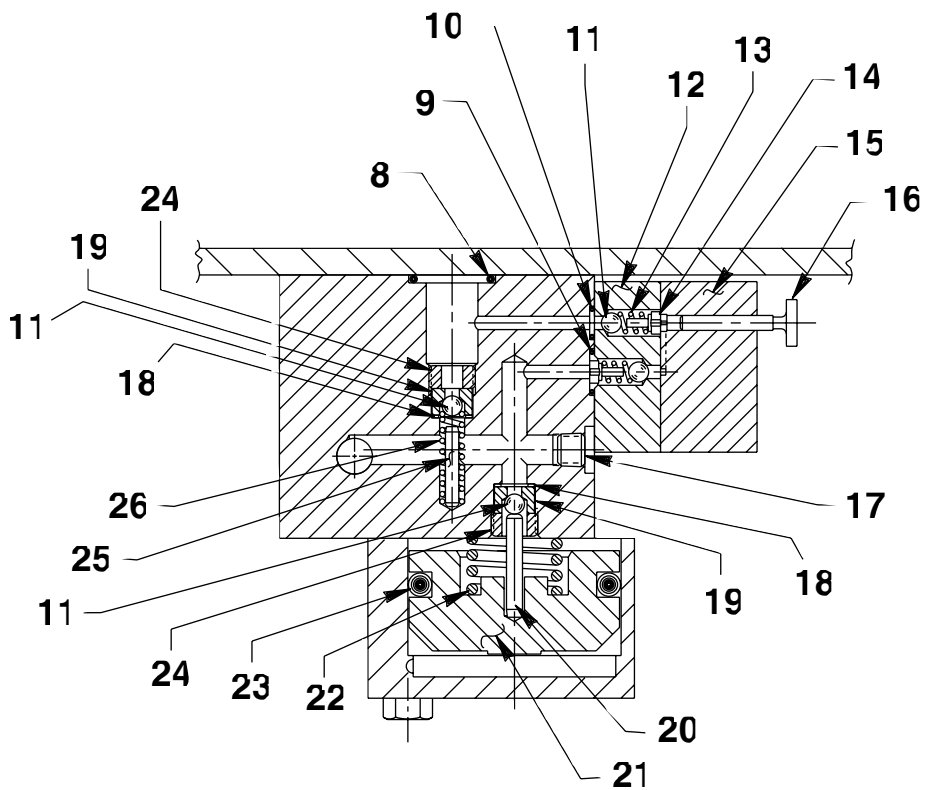
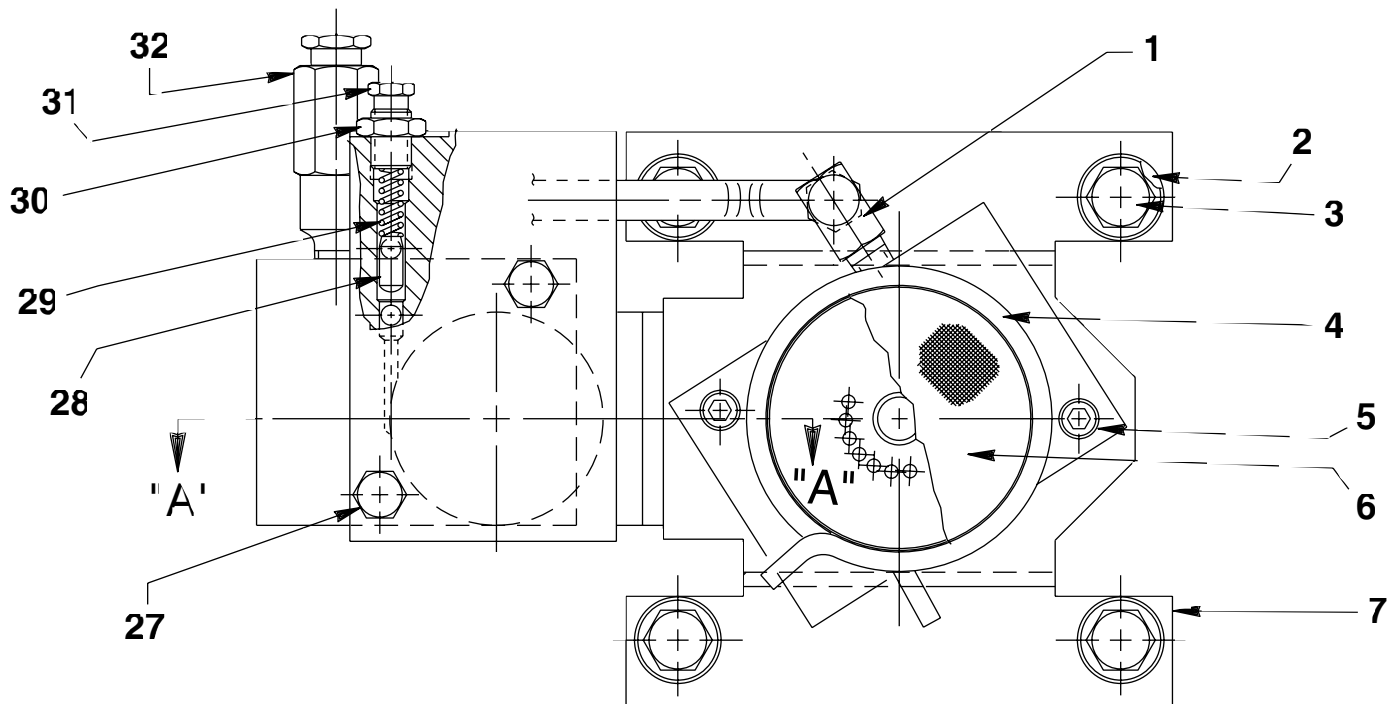
Item No.	Part No.	No. Req'd	Description
7	10199	2	Hex Nut (1/4-20 UNC)
8	47492	1	Handle
9	203972	1	Decal (CSA; For PE17A & PE17C)
10	61166BK2	1	Cover Plate

PARTS INCLUDED BUT NOT SHOWN

15668	1	Set Screw (1/4-20 UNC X 1/2 Lg.; Turn in until flush with cover plate; For PA17A only.)
-------	---	---

BOTTOM VIEW & SECTION A-A

To Parts
List



SECTION A-A

Item No.	Part No.	No. Req'd	Description
1	14440	1	Elbow Fitting
2	10258	8	Washer (For 3/8 bolt)
3	213663	4	Cap Screw (3/8-16 UNC X 1" Lg.; Torque to 230/250 in. lbs.)
4	11461	1	Hose Clamp
5	10854	2	Screw (1/4-20UNC X 1-3/4 Lg.; Torque to 60/80 in. lbs.)
6	21608	1	Filter
7	52174	1	Pump Mounting Bracket
8	*10273	1	O-ring (13/16 X 5/8 X 3/32; Nitrile)
	†18999	1	O-ring (13/16 X 5/8 X 3/32; Viton)
	•250157	1	O-ring (13/16 X 5/8 X 3/32; EPR)
9	*14763	1	O-ring (7/16 X 5/16 X 1/16; Nitrile)
	†18974	1	O-ring (7/16 X 5/16 X 1/16; Viton)
	•13472	1	O-ring (7/16 X 5/16 X 1/16; EPR)
10	*10265	1	O-ring (5/16 X 3/16 X 1/16; Nitrile)
	†11437	1	O-ring (5/16 X 3/16 X 1/16; Viton)
	•17714	1	O-ring (5/16 X 3/16 X 1/16; EPR)
11	12223	4	Ball (3/16 Dia.)
12	45559	1	Block
13	10445	2	Compression Spring (5/32 O.D. X 3/4 Lg.)
14	24549	2	Ball Guide
15	45560	1	Block
16	304820	1	Piston
17	15130	1	Plug Fitting
18	10442	2	Copper Washer (3/8 X 1/4 X 1/32)
19	209787	2	Replaceable Seat
20	211843	1	Dowel Pin (3/16 Dia. X 1" Lg.; Note: Install with radius end out.)
21	46063	1	Piston
22	16346	1	Compression Spring (1" O.D. X 7/8 Lg.)
23	*10283	1	O-ring (2" X 1-5/8 X 3/16; Nitrile)
	†19062	1	O-ring (2" X 1-5/8 X 3/16; Viton)
	•250159	1	O-ring (2" X 1-5/8 X 3/16; EPR)
24	209797	2	Hollow Lock Screw (7/16-20 UNF-3A; Torque to 180/200 in. lbs.)
25	12149	1	Dowel Pin (1/8 Dia. X 3/4 Lg.)
26	16057	1	Compression Spring (3/16 O.D. X 1" Lg.)
27	13037	2	Cap Screw (1/4-20 UNC X 2" Lg.; Torque to 40/50 in. lbs.)
28	15156	1	Dowel Pin (1/4 Dia. X 1/2 Lg.; Note: Install tapered end toward spring.)
29	11221	1	Compression Spring (1/4 O.D. X 1" Lg.)
30	10386	1	Jam Nut (3/8-24 UNF)
31	29786	1	Adjusting Nut (Low Pressure Relief Valve)
32	21278	1	Relief Valve Assembly (See NOTE below)

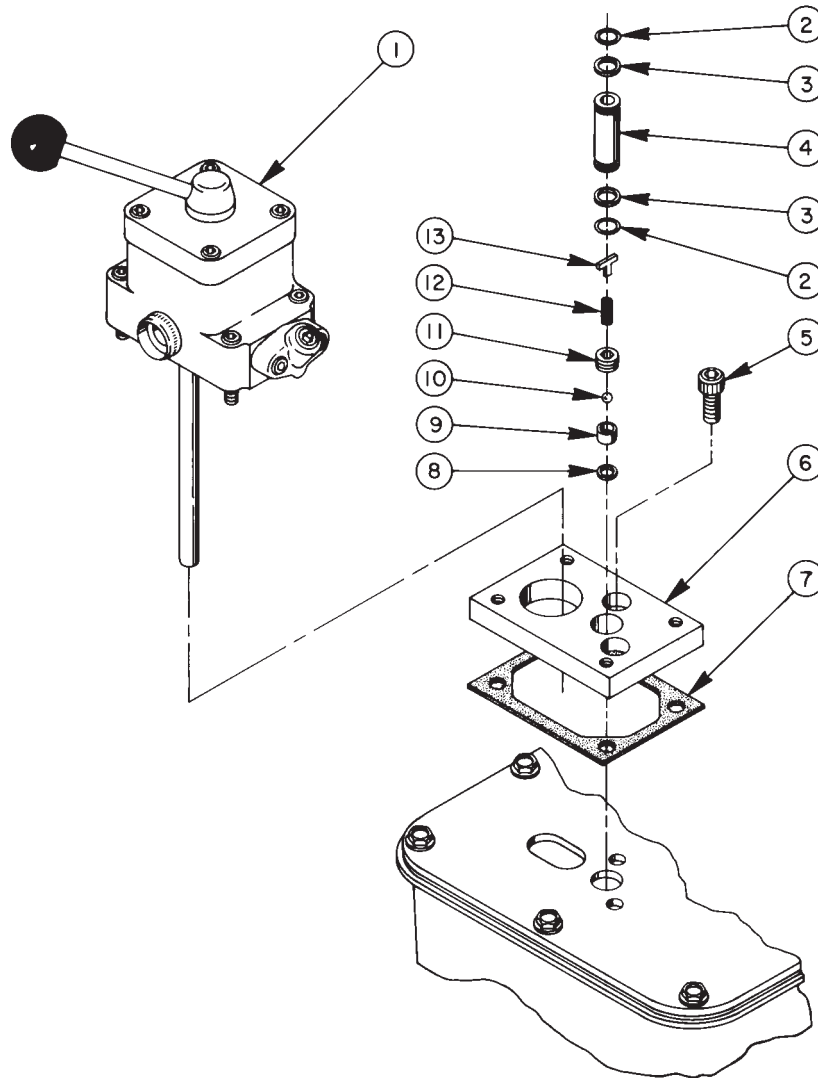
NOTE

Standard relief valves are set at 10,100/10,700 PSI.
 Relief valves pre-set at special settings are available.
 Refer to your pump model number or contact Power Team Technical Services.



OPTIONAL VALVE ASSEMBLIES

4-Way Tandem Center Directional Valve



Item No.	Part No.	No. Req'd	Description
1	9500	1	4-Way Valve Ass'y (see Form No. 100623)
2	▲*10268	2	O-ring (1/2 X 3/8 X 1/16)
	†11439	2	O-ring (1/2 X 3/8 X 1/16)
	•17716	2	O-ring (1/2 X 3/8 X 1/16)
3	▲*11863	2	Backup Washer (1/2 X 3/8 X 1/16)
4	209809	1	Coupling
5	10030	2	Cap Screw (5/16-18 UNC X 3/4 Lg.; Torque to 220/240 in. lbs.)
6	52165	1	Adapter Block Manifold

Item No.	Part No.	No. Req'd	Description
7	*200395	1	Gasket
8	▲*10442	1	Copper Washer (1/4 Bolt)
9	▲*209787	1	Replaceable Seat
10	▲*12223	1	Steel Ball (3/16 Dia.)
11	209797	1	Hollow Lock Screw (7/16-20 UNF-3A; Torque to 110/130 in. lbs.)
12	*211797	1	Compression Spring (5/32 O.D. X 5/8 Lg.)
13	▲209795	1	Outlet Ball Stop

Part numbers marked with an asterisk (*) are contained in Repair Kit No. 300430.

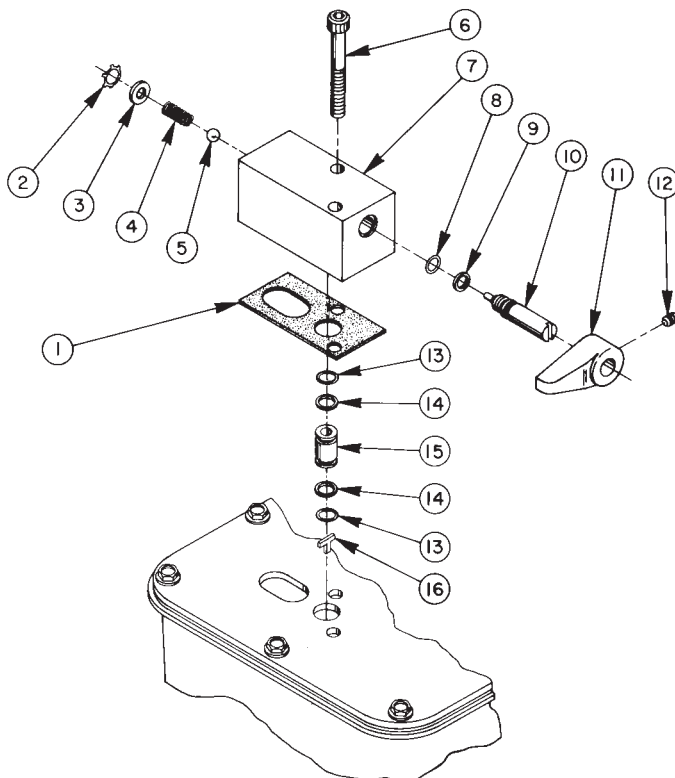
Part numbers marked with a dagger (†) are contained in Viton Seal Kit No. 300920.

Part numbers marked with a bullet (•) are contained in EPR Seal Kit No. 300648.

Part numbers marked with a triangle (▲) are contained in Outlet Check Repair Kit No. 300606.

OPTIONAL VALVE ASSEMBLIES

2 Position, 2-Way Manual Valve

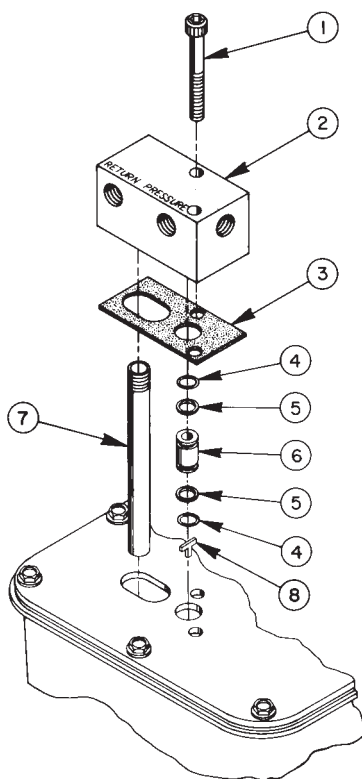


Item No.	Part No.	No. Req'd	Description
1	*304829	1	Gasket
2	*11088	1	Retaining Ring (9/16 Shaft)
3	11089	1	Washer (3/16 Bolt)
4	*11024	1	Compression Spring (1/4 O.D. X 5/8 Lg.)
5	*10423	1	Steel Ball (9/32 Dia.)
6	209945	2	Cap Screw (5/16-18 UNC X 2-1/2 Lg.; Torque to 220/240 in. lbs.)
7	52168	1	Valve Body
8	*10267	1	O-ring (7/16 X 5/16 X 1/16)
	†18974	1	O-ring (7/16 X 5/16 X 1/16)
	•13472	1	O-ring (7/16 X 5/16 X 1/16)
9	*15085	1	Backup Washer (7/16 X 5/16 X 3/64 Thk.)

Item No.	Part No.	No. Req'd	Description
10	304849	1	Release Valve Screw
11	213109	1	Release Valve Handle
12	10556	1	Set Screw (1/4-20 UNC X 1/4 Lg.; Torque to 30/50 in. lbs.)
13	*10268	2	O-ring (1/2 x 3/8 X 1/16)
	†11439	2	O-ring (1/2 x 3/8 X 1/16)
	•17716	2	O-ring (1/2 x 3/8 X 1/16)
14	*11863	2	Backup Washer (1/2 X 3/8 X 1/16)
15	202505	1	Coupling
16	209795	1	Outlet Ball Stop (Part of the Basic Pump Ass'y)
	52170	1	Complete Valve Ass'y (Consists of Items 1 thru 15)

Part numbers marked with an asterisk (*) are contained in Repair Kit No. 300430.
 Part numbers marked with a dagger (†) are contained in Viton Seal Kit No. 300920.
 Part numbers marked with a bullet (•) are contained in EPR Seal Kit No. 300648.

MANIFOLD ASSEMBLY

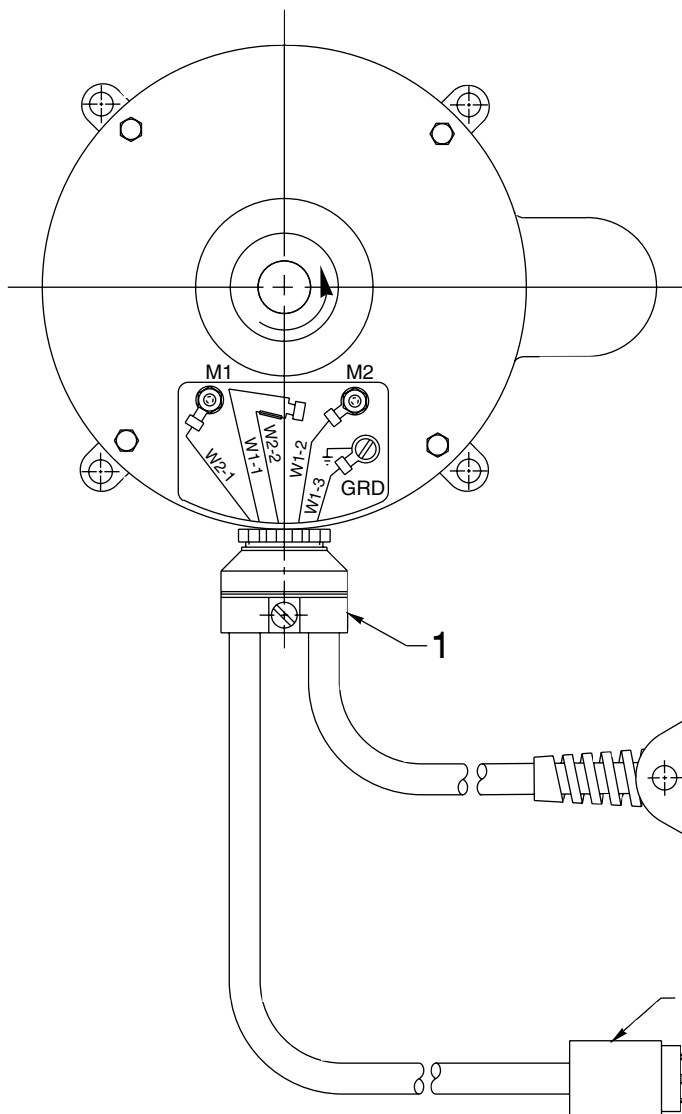


Item No.	Part No.	No. Req'd	Description
1	209945	2	Cap Screw (5/16-18 UNC X 2-1/2 Lg.; Torque to 220/240 in. lbs.)
2	45554	1	Manifold
3	*304829	1	Gasket
4	*10268	2	O-ring (1/2 X 3/8 X 1/16)
	†11439	2	O-ring (1/2 x 3/8 X 1/16)
	•17716	2	O-ring (1/2 X 3/8 X 1/16)

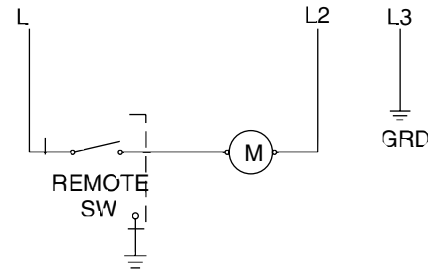
Item No.	Part No.	No. Req'd	Description
5	*11863	2	Backup Washer (1/2 X 3/8 X 1/16)
6	202505	1	Coupling
7	200609	1	Drain Line
8	209795	1	Outlet Ball Stop (Part of the Basic Pump Ass'y)

Part numbers marked with as asterisk (*) are contained in Repair Kit No. 300430.
 Part numbers marked with a dagger (†) are contained in EPR Seal Kit No. 300920.
 Part numbers marked with a bullet (•) are contained in EPR Seal Kit No. 300648.

ELECTRICAL DATA FOR PE17A & PE17C



ELECTRICAL SCHEMATIC 115/110 V., 60/50 HZ.



NOTE THIS GROUND ONLY PRESENT ON PUMPS WITH FOOT SWITCH OPTION

NOTE FOR PE 7A, 115 V, 60 HZ ONLY
SEE FINAL LEVEL INFORMATION
ON YOUR PUMP

NOTE FOR PE 7C, 110 V, 50 HZ ONLY
SEE FINAL LEVEL INFORMATION
ON YOUR PUMP

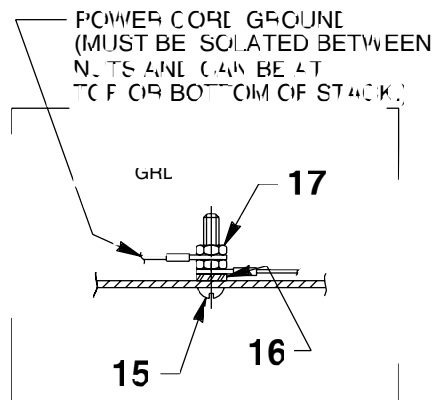
Item No.	Part No.	No. Req'd	Description
1	17866	1	Conduit Connector
2	25017	1	Hand Switch (See sheet 7 of 7)
	10461	1	Foot Switch
3	308752	—	Electrical Cable (14/3 SJTO; See final level information on your pump for length needed.)
4	16896	1	Electrical Plug

Note: This page was added at the last revision(s) made to this form.

ELECTRICAL DATA FOR PE17B & PE17D

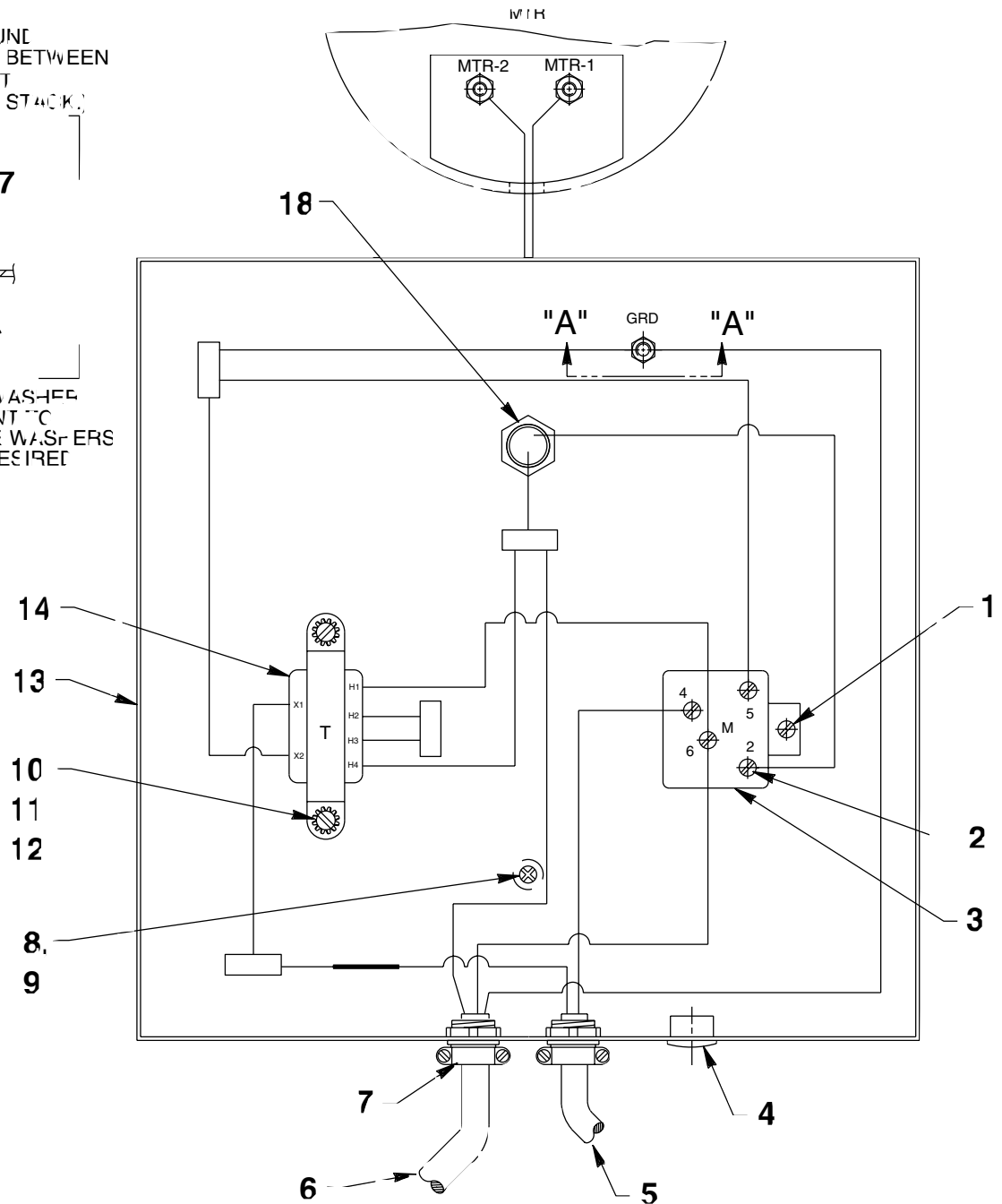
To Parts List

FOR PROPER MOTOR VOLTAGE CONNECTION
AND ROTATION SEE CONNECTION INFORMATION
SUPPLIED WITH MOTOR



NOTE SEPARATE DOWNSHOWER
MUST BE 40 INCH TALL
METAL BOX MORE WASHERS
CAN BE USED IF DESIRED

V EW A-A



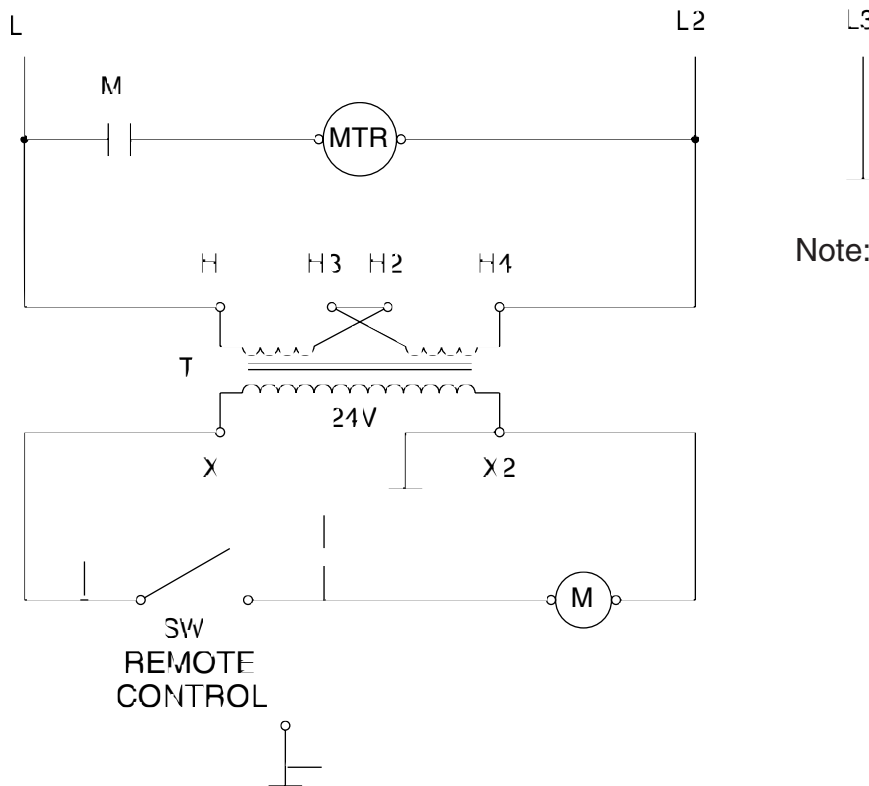
Item No.	Part No.	No. Req'd	Description
1	17370	1	Screw (6-20 X 1/4 Lg.)
2	10975	4	Screw (8-32 UNC X 5/16 Lg.)
3	14667	1	Starter Relay
4	251045	1	Bushing Plug
5	25017	1	Hand Switch (See sheet 7 of 7)
	10461	1	Foot Switch
6	308752	-	Electrical Cable (14/3 SJTO; For 220 V., 50 Hz.)
	11209	1	Electrical Plug (For 230 V., 60 Hz.)
7	11203	2	Conduit Connector
8	252253	1	Screw (8-32 x 3/8 Lg.)
9	12355	2	Washer (For #8 bolt)
10	10962	2	Screw (8-32 UNC X 1/2 Lg.)
11	10196	2	Hex Nut ((#8-32 UNC)
12	11388	2	Washer (#8 External Tooth)
13	42575WH2	1	Electrical Control Box
14	305665	1	Transformer
15	10167	1	Screw (#10-24 UNC X 3/4 Lg.)
16	11108	1	Washer (#10 External Tooth)
17	10197	2	Hex Nut (#10-24 UNC)
18	11202	1	Nipple



ELECTRICAL SCHEMATIC



WARNING: To help avoid personal injury, all electrical work must be done by a qualified electrician.



Note: Transformer connections are as shown for 115 v., 50/60 Hz.

For 220 v., 50/60 Hz. units, transformer connections to be as follows:

H1 to L1

H2 to H3

H4 to L2

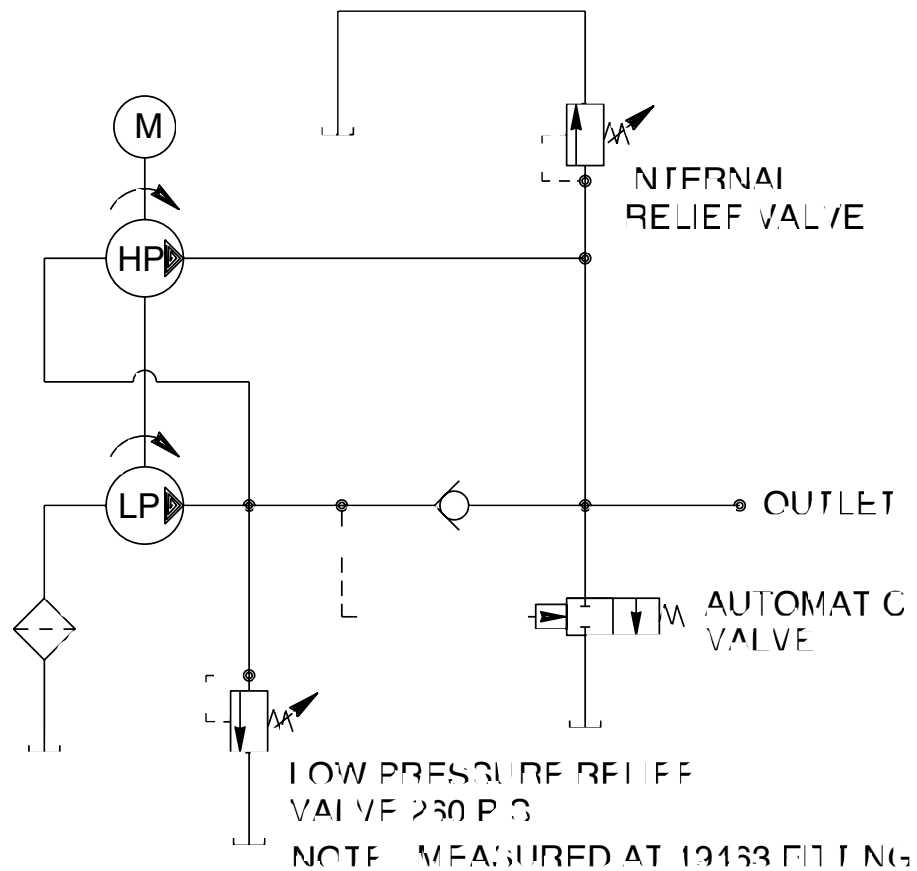
NOTE THIS GROUND ONLY PRESENT ON PUMPS WITH FOOT SWITCH OPTION

Sheet No. 6 of 7

Rev. 1

Date: 29 May 1997

HYDRAULIC SCHEMATIC



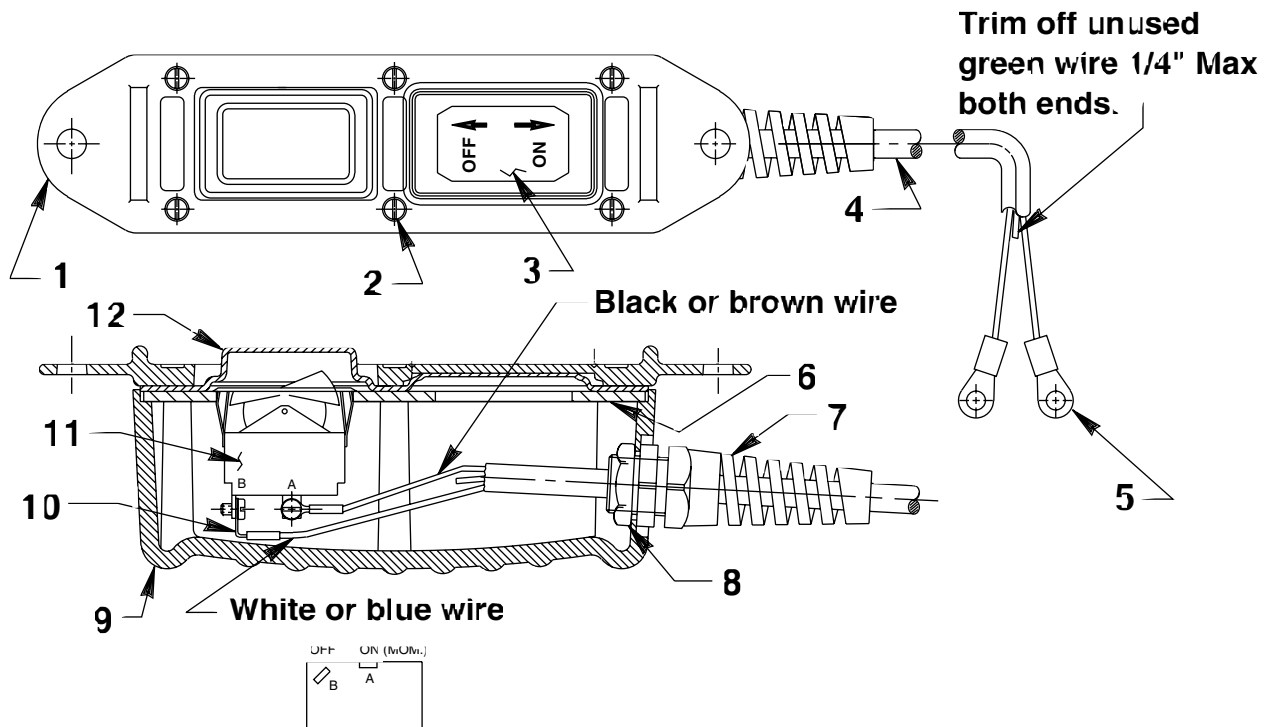
Refer to any operating instructions included with this product for detailed information about operation, testing, disassembly, reassembly, and preventive maintenance.

Items found in this parts list have been carefully tested and selected. **Therefore: Use only genuine replacement parts!**

Additional questions can be directed to our Technical Services Department.

REMOTE HAND SWITCH ASSEMBLY

No. 25017



Item No.	Part No.	No. Req'd	Description
1	420050-1	1	Cover
2	250248	6	Screw (4-24 x 3/4 Lg.)
3	202763	1	Decal
4	12908	11 ft.	Cable (18/3 SJTO)
5	10458	2	Ring Terminal
6	420050-3	1	Switch Mounting Plate
7	251818	1	Strain Relief Connector
8	251802	1	Locknut (3/4-16 UNF; Torque to 30/35 in. lbs.)
9	420050-4	1	Switch Housing
10	10525	2	Ring Terminal
11	16772	1	Rocker Switch
12	420050-2	1	Gasket