

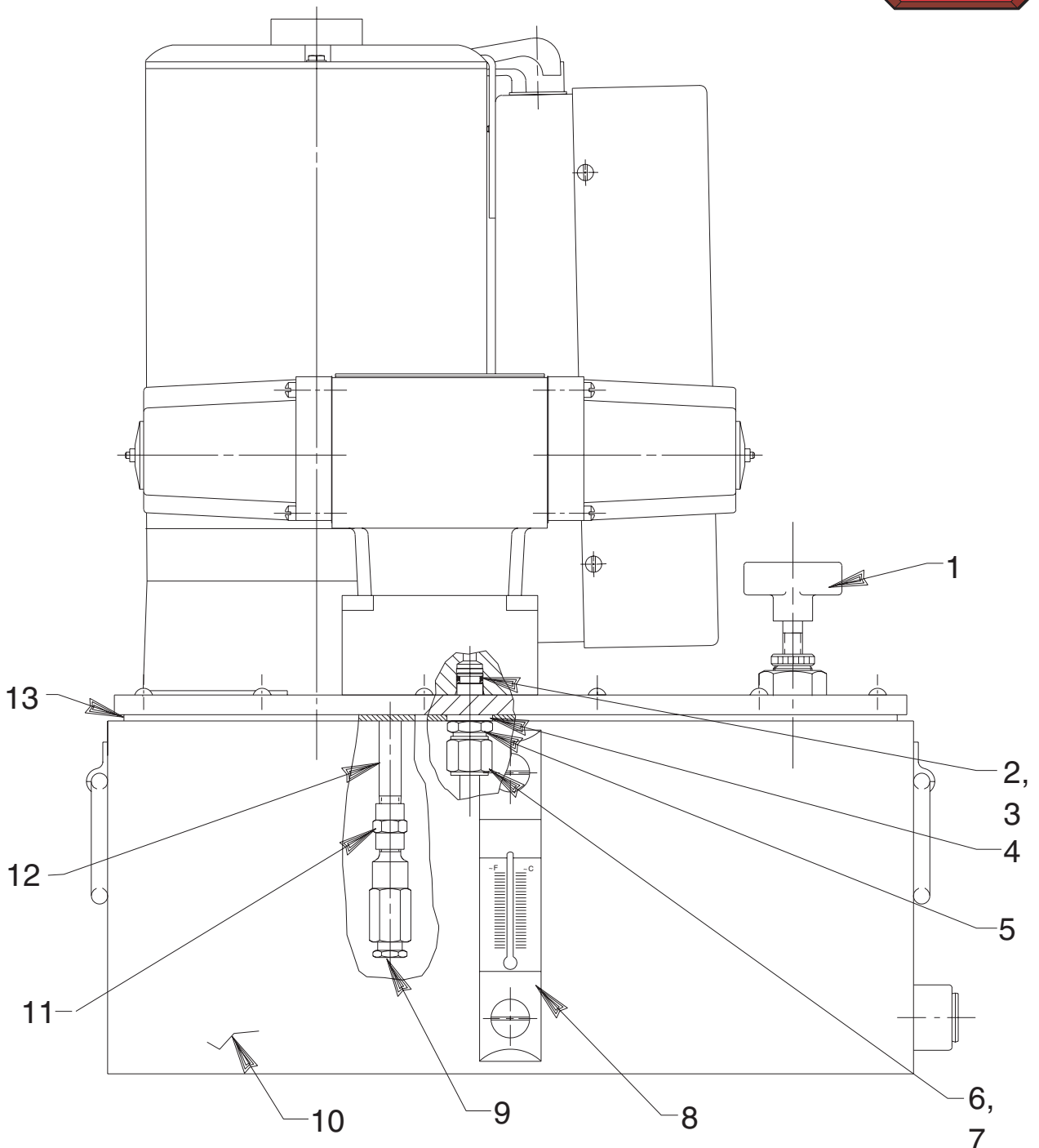
Parts List for:

X2E3
X2E3-TDS
X2E4
X2E4-TDS

Internet Address:
<http://www.powerteam.com>

DUAL ELECTRIC HYDRAULIC PUMP

PUMP SIDE VIEW



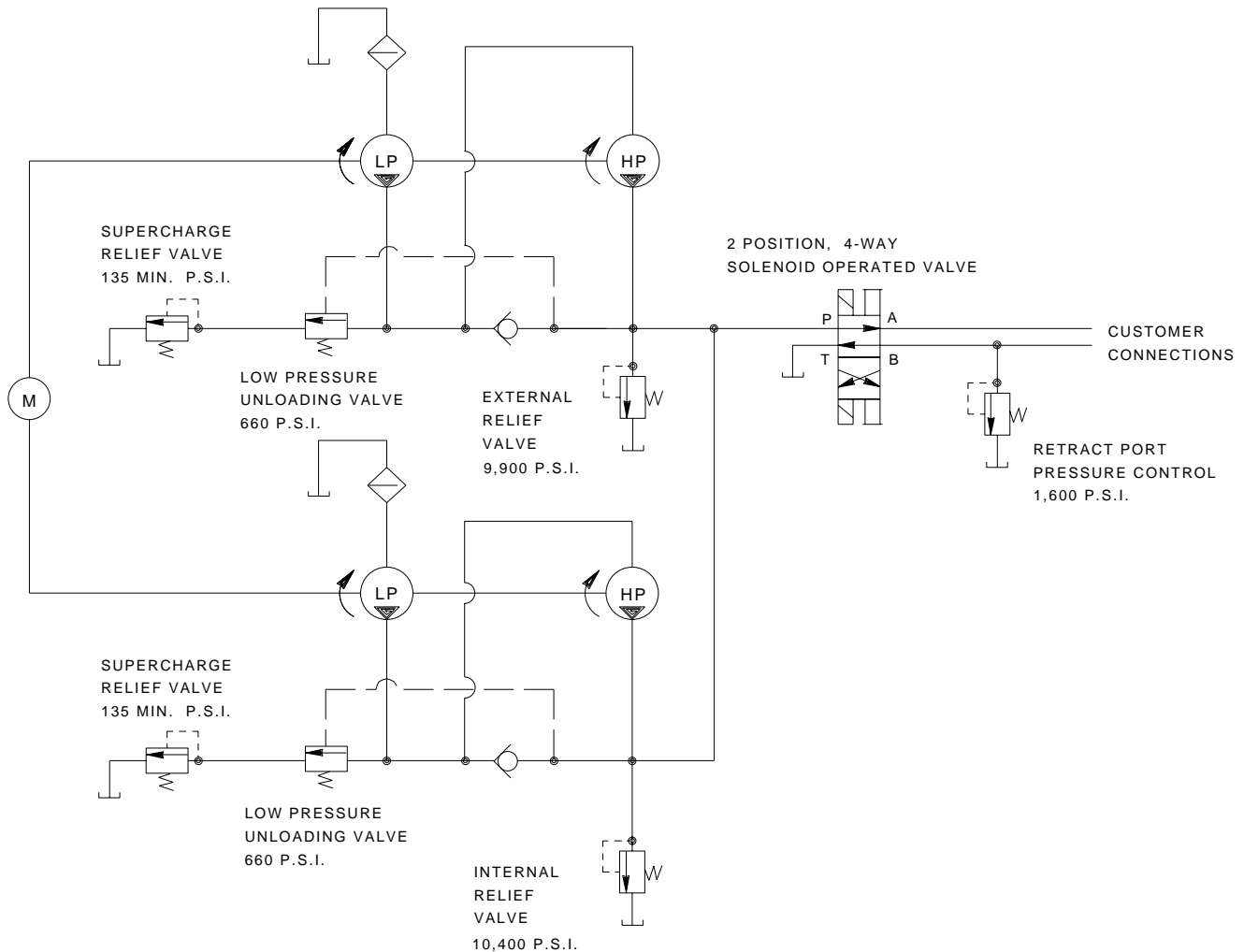
Sheet No. 1 of 7

Rev. 2 Date: 23 Oct. 1997

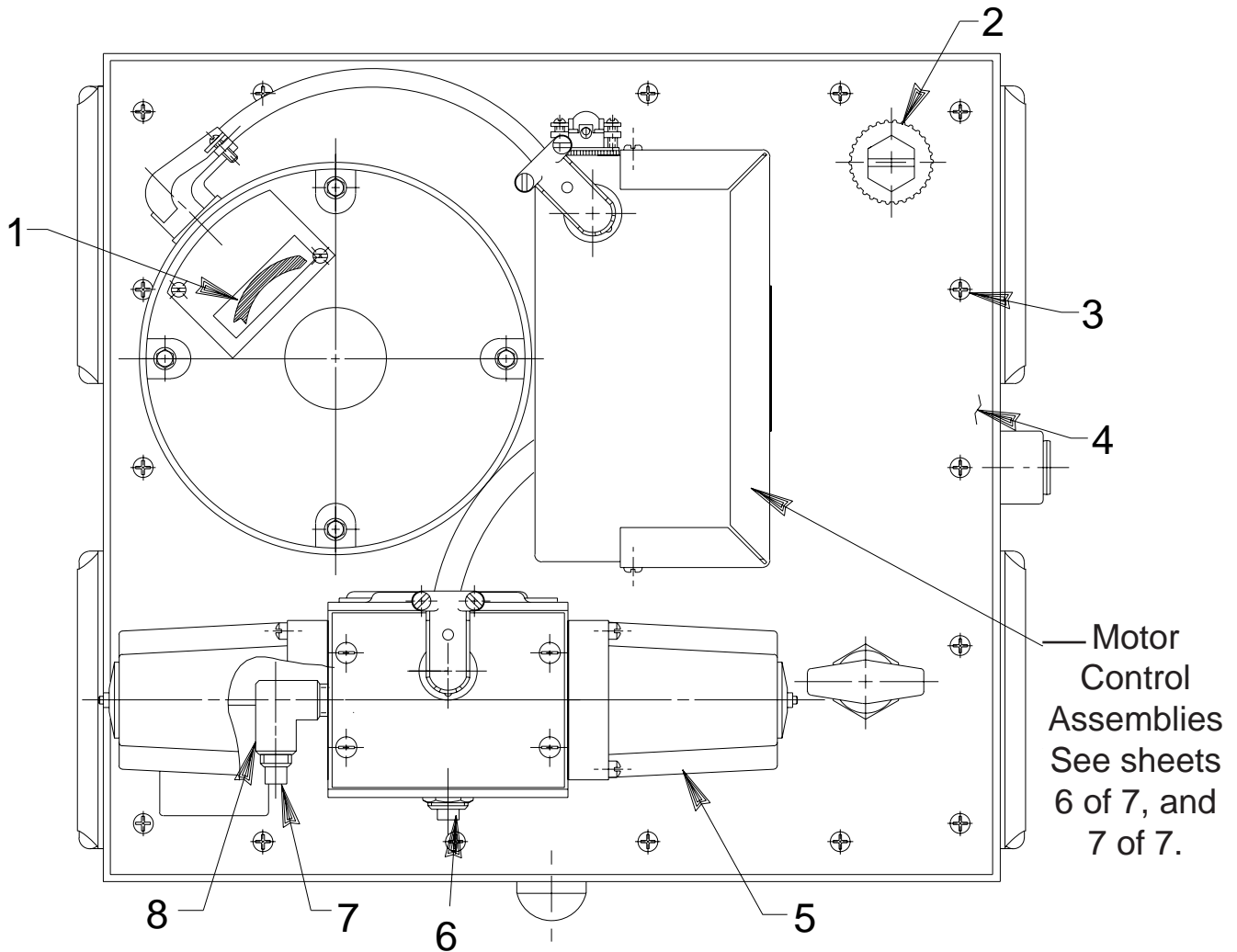
Item No.	Part No.	No. Req'd	Description
1	421280	1	Pressure Regulator (See Form No. 101697)
2	10268	1	O-ring (1/2 X 3/8 X 1/16)
3	11863	1	Teflon Backup Washer (1/2 X 3/8 X 1/16)
4	21484	1	Spacer
5	20787	1	Valve Connector
6	10430	1	Tube Sleeve
7	10431	1	Tube Nut
8	350431	1	Sight Gauge
9	21278-15	1	Relief Valve Assembly (Set at 1500/1700 PSI)
10	64594BL2	1	Reservoir
11	18841	1	Pipe Connector
12	15456	1	Straight Fitting
13	50712	1	Gasket



HYDRAULIC SCHEMATIC



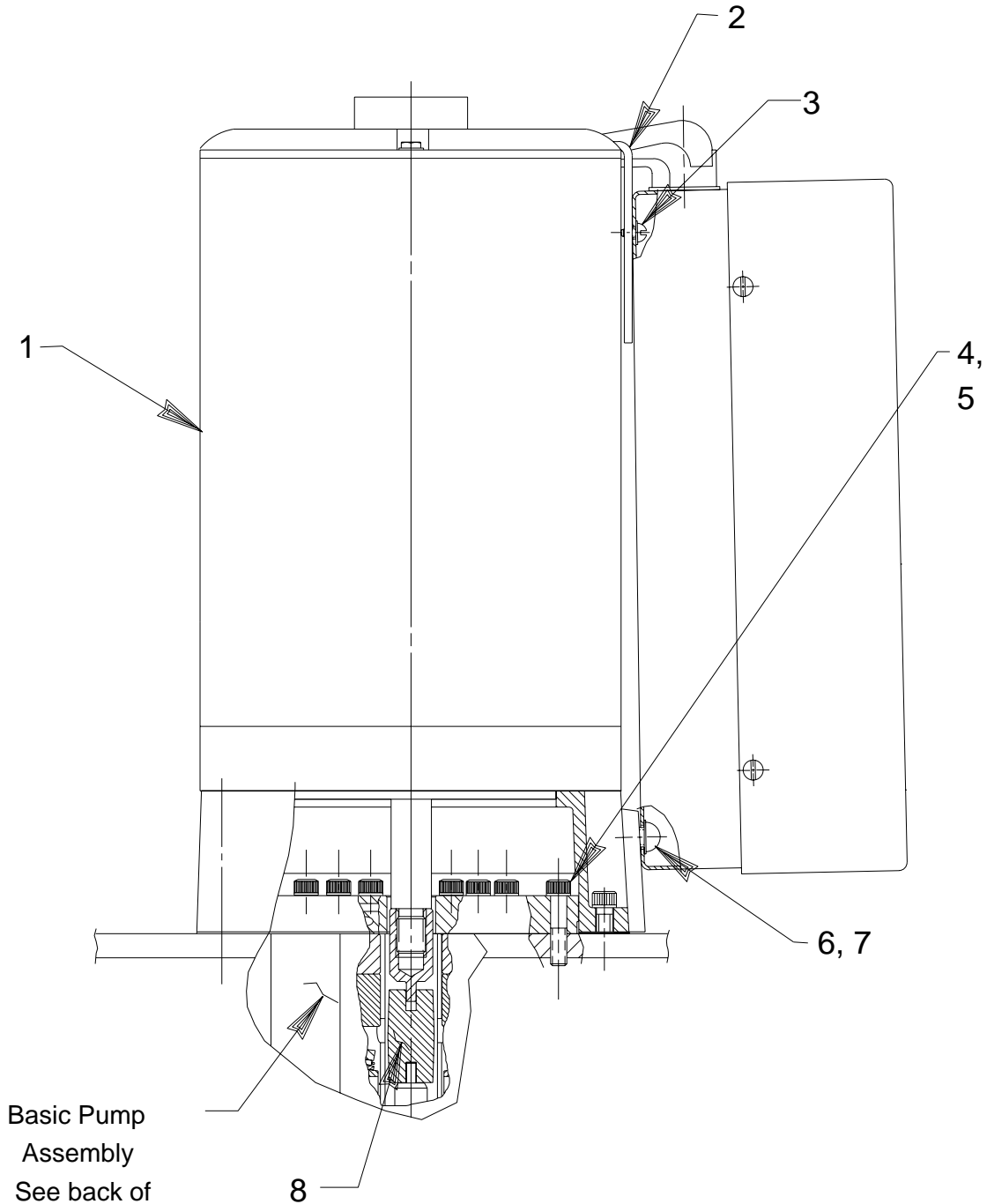
PUMP TOP VIEW



Item No.	Part No.	No. Req'd	Description
1	27556	1	Decal (Motor Rotation)
2	213706	1	Plug
3	13026	18	Machine Screw (10-24 UNC X 3/4 Lg.)
4	64169BK2	1	Cover Plate
5	61408	1	Solenoid Valve (See Form No. 100540)
6	11127	1	Pressure Plug (3/8 NPTF)
7	10970	1	Pipe Plug (1/4 NPTF)
8	10617	1	Elbow

} For X2E3 & X2E3-TDS only

PUMP MOTOR SIDE VIEW

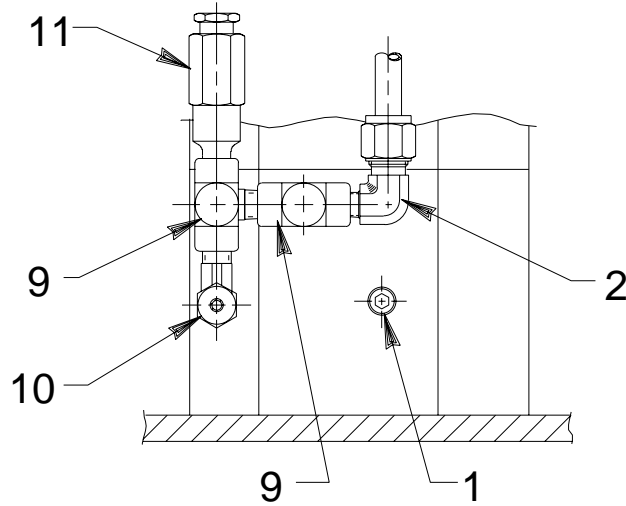
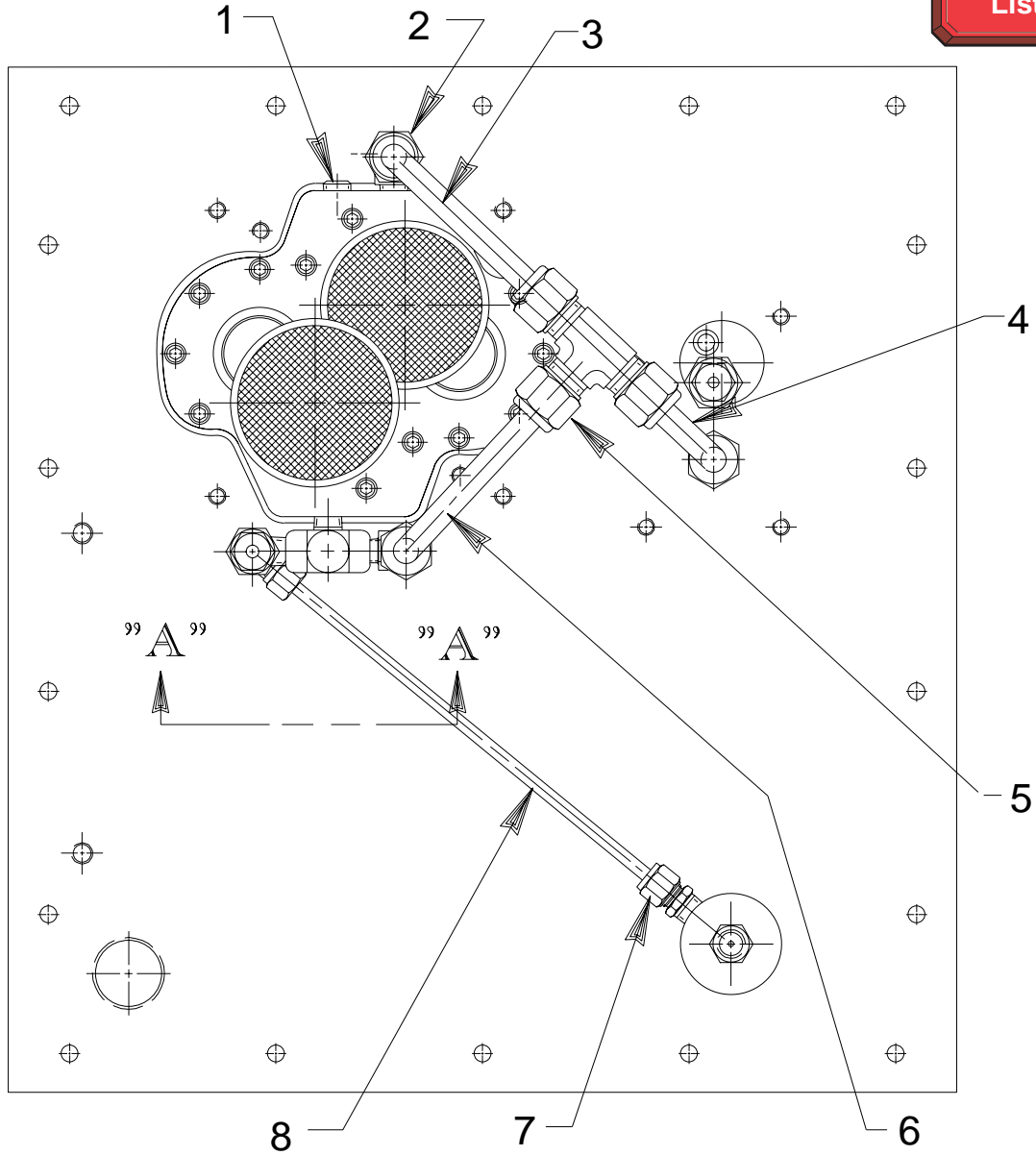


Basic Pump
Assembly
See back of
sheet 4 of 6

Item No.	Part No.	No. Req'd	Description
1	41318	1	Motor Assembly (For X2E4 & X2E4-TDS; 380 V., 50 Hz.; See sheet 6 of 7)
	41318-50	1	Motor Assembly (For X2E3 & X2E3-TDS; 460 V., 60 Hz.; See sheet 6 of 7)
2	210442	1	Mounting Bracket
3	11388	1	Lockwasher (#8 External Tooth)
4	10447	1	Machine Screw (#8-32 UNC X 5/16 Lg.)
5	10016	2	Cap Screw (1/4-20 UNC X 1" Lg.; Torque to 80/100 in. lbs.)
6	11351	2	Washer (1/4 External Tooth)
7	10177	2	Machine Screw (1/4-20 UNC X 3/4 Lg.)
8	21091	1	Coupling

PUMP BOTTOM VIEW & SECTION A-A

To Parts List



VIEW A-A

Item No.	Part No.	No. Req'd	Description
1	10427	2	Pressure Plug (1/8 NPTF)
2	10475	2	Tube Elbow
3	350275	1	Oil Line
4	350274	1	Oil Line
5	10659	1	Tee
6	305273	1	Oil Line
7	11173	1	Connector
8	350918	1	Oil Line Assembly
9	14538	2	Tee
10	11278	1	Tube Elbow
11	21278	1	Relief Valve Assembly (Set at 10,100/10,700 PSI)

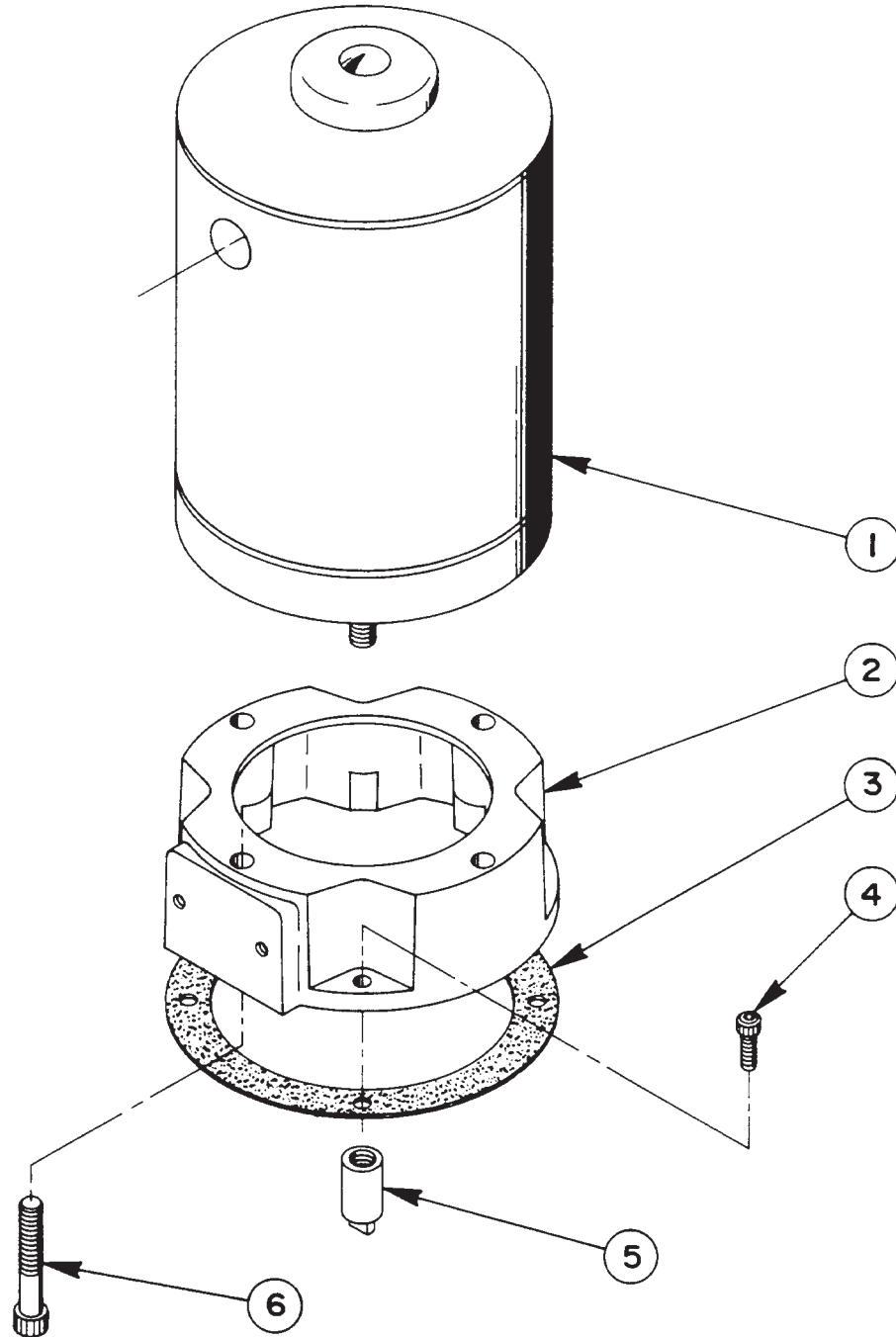


Refer to any operating instructions included with this product for detailed information about operation, testing, disassembly, reassembly, and preventive maintenance.

Items found in this parts list have been carefully tested and selected. **Therefore: Use only genuine Power Team replacement parts!**

Additional questions can be directed to our Technical Services Department.

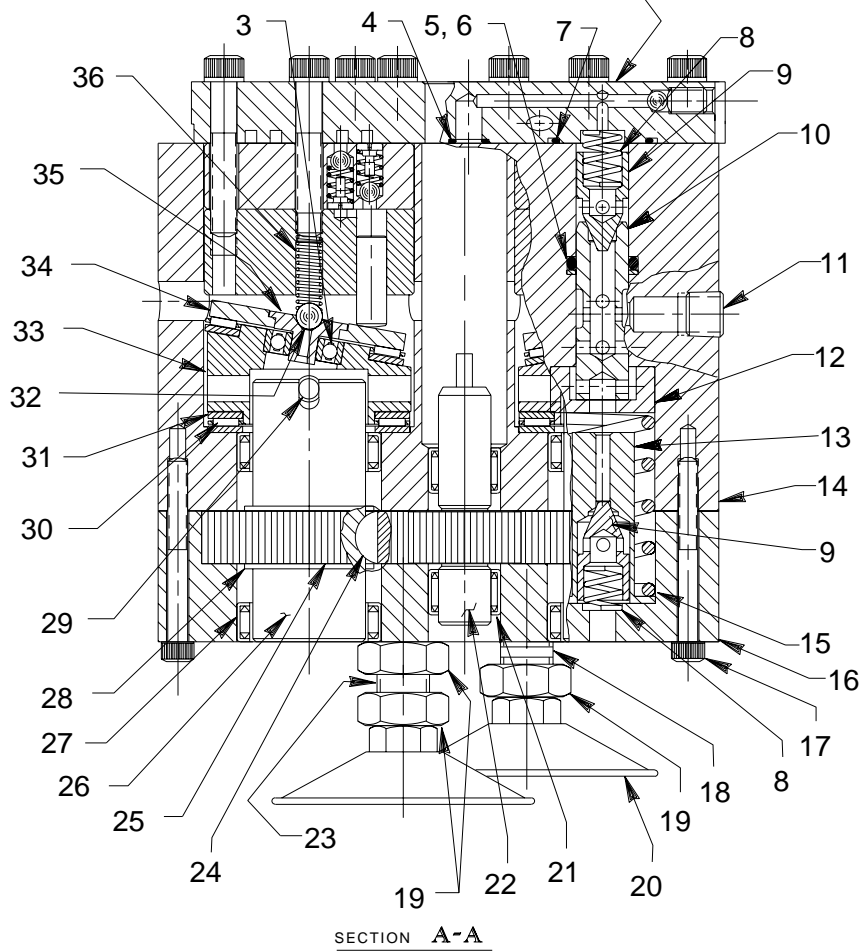
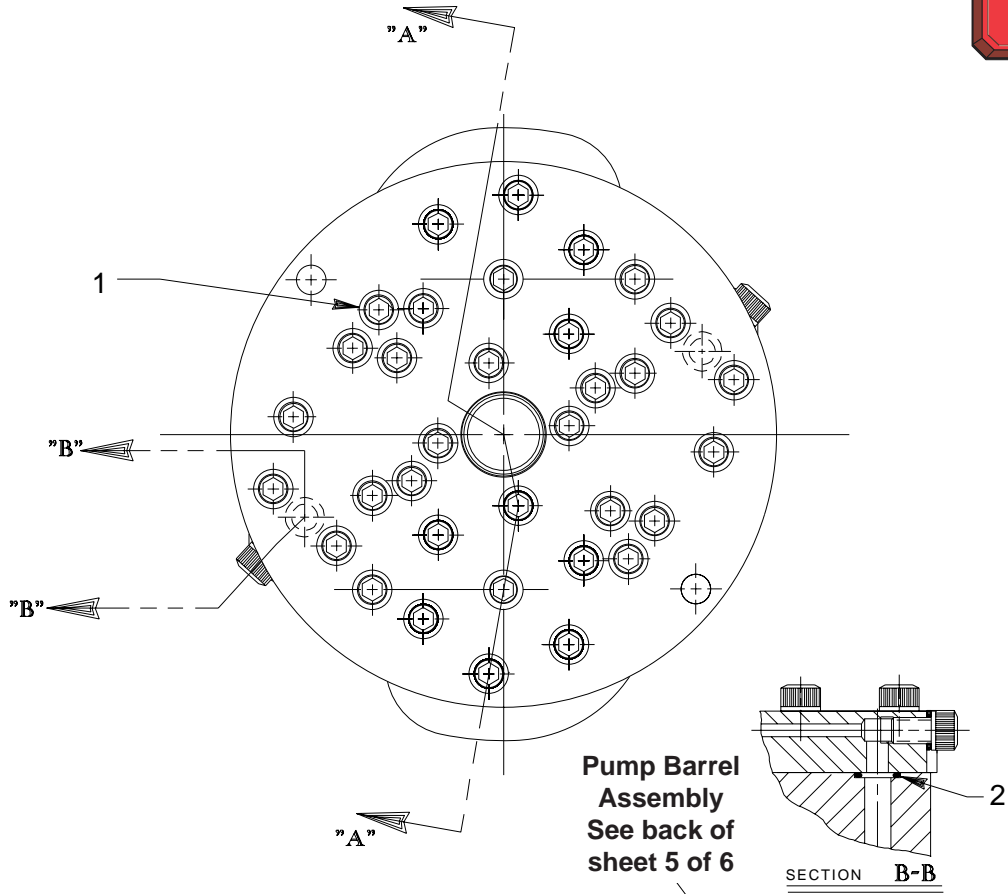
ELECTRIC MOTOR ASSEMBLY



Item No.	Part No.	No. Req'd	Description
1	13865	1	Electric Motor (For X2E4 & X2E4-TDS)
	15596	1	Electric Motor (For X2E3 & X2E3-TDS)
2	40118GY5	1	Motor Base
3	30650	1	Gasket
4	10008	4	Cap Screw (1/4-20 UNC X 3/4 Lg.)
5	21274	1	Adapter
6	12866	4	Cap Screw (3/8-16 UNC X 2-1/4 Lg.)

Note: Shaded areas reflect last revision(s) made to this form.

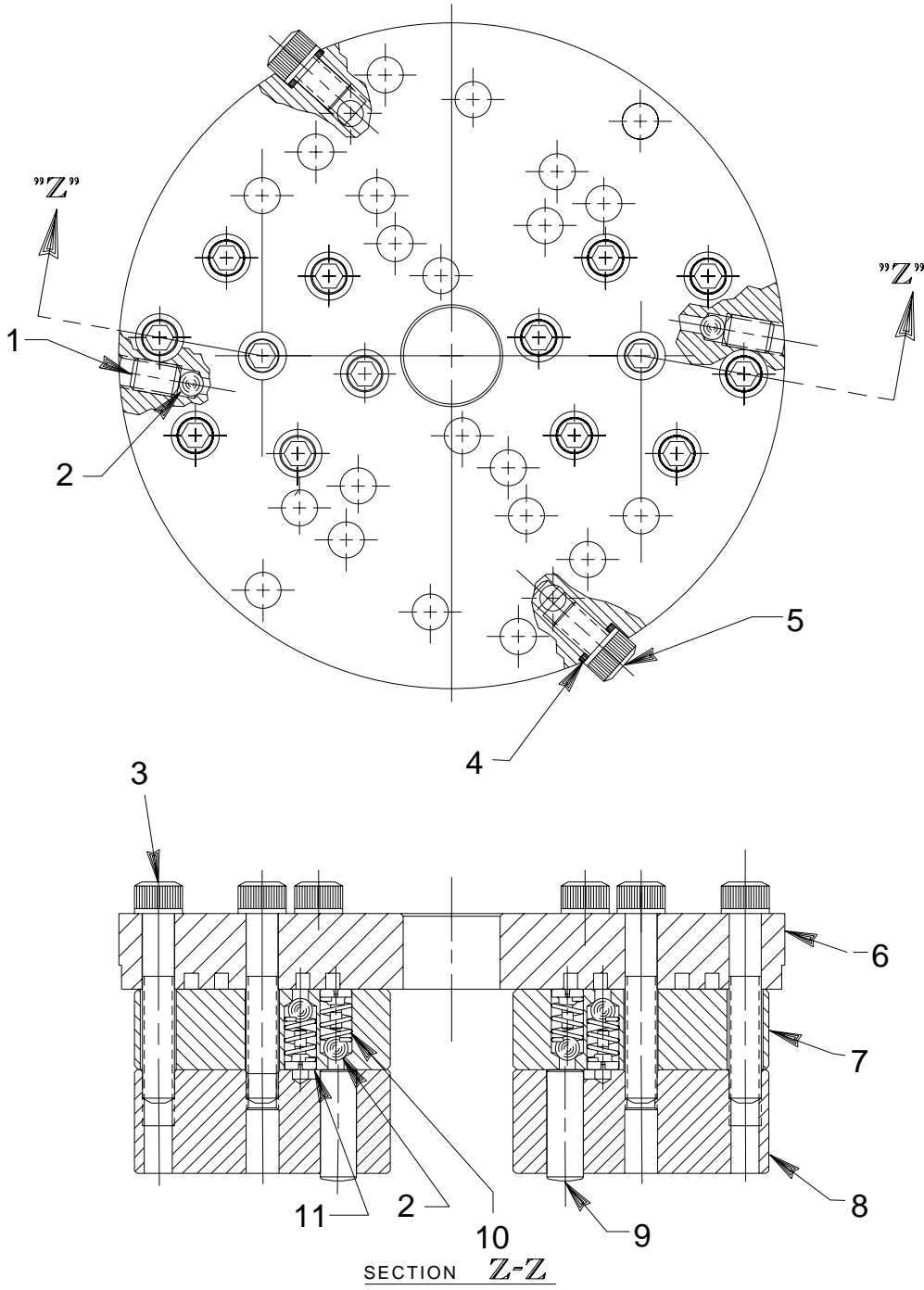
BASIC PUMP ASSEMBLY



Item No.	Part No.	No. Req'd	Description
1	10020	20	Cap Screw (1/4-20 UNC X 1-1/4 Lg.; Torque to 170/180 in. lbs.)
2	10267	2	O-ring (7/16 X 5/16 X 1/16)
3	11814	2	Ball Bearing
4	10266	2	O-ring (3/8 X 1/4 X 1/16)
5	10271	2	O-ring (11/16 X 1/2 X 3/32)
6	12389	2	Backup Washer (11/16 x 1/2 X 1/16)
7	10303	2	O-ring (7/8 X 3/4 X 1/16)
8	10425	4	Compression Spring (3/8 O.D. X 3/4 Lg.)
9	20771	4	Poppet
10	20849	2	Spool
11	10427	2	Pressure Plug
12	23255	2	Spring Guide
13	23256	2	Spring Guide
14	64060	1	Body
15	10426	2	Compression Spring (1" O.D. X 1-13/16 Lg.)
16	64586	1	Body
17	10001	18	Cap Screw (#10-32 UNF X 1-3/4 Lg.; Torque to 50/60 in. lbs.)
18	250219	1	Intake Tube (Apply Permatex [3H] to threads before installing into body [Item#16].)
19	10390	3	Nut
20	29682	2	Strainer
21	11199	2	Needle Bearing
22	21272	1	Drive Gear
23	250218	1	Intake Tube (Apply Permatex [3H] to threads before installing into body [Item#16].)
24	11821	2	Woodruff Key
25	23557	2	Driver Gear
26	23556	2	Shaft
27	11064	4	Needle Bearing
28	11261	4	Retaining Ring
29	11955	2	Pin
30	11228	4	Thrust Bearing
31	11813	6	Bearing Race
32	10375	2	Steel Ball (1/4 dia.)
33	23549	2	Angle Plate
34	23548	2	Top Plate
35	23547	2	Bearing Top Plate
36	10361	2	Compression Spring (1/4 O.D. X 1" Lg.)

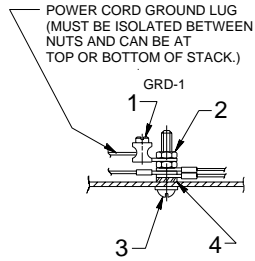


HIGH PRESSURE PUMP ASSEMBLY

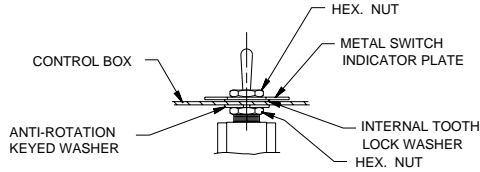


Item No.	Part No.	No. Req'd	Description
1	10519	2	Set Screw (1/4-20 UNC X 3/8 Lg.; Torque to 65/70 in. lbs.)
2	12223	14	Ball (3/16 Dia.)
3	10023	14	Cap Screw (1/4-28 UNF X 1-1/2 Lg.; Torque to 170-180 in. lbs.)
4	10442	2	Washer (3/8 X 1/4 X 1/32)
5	10002	2	Cap Screw (1/4-20 UNC X 3/8 Lg.; Torque to 140-160 in. lbs.)
6	64061	1	Top Plate
7	40630	2	Valve Head
8	41062	2	Barrel
9	21628	6	Piston
10	10445	12	Compression Spring (5/32 O.D. X 3/4 Lg.)
11	24549	12	Ball Guide

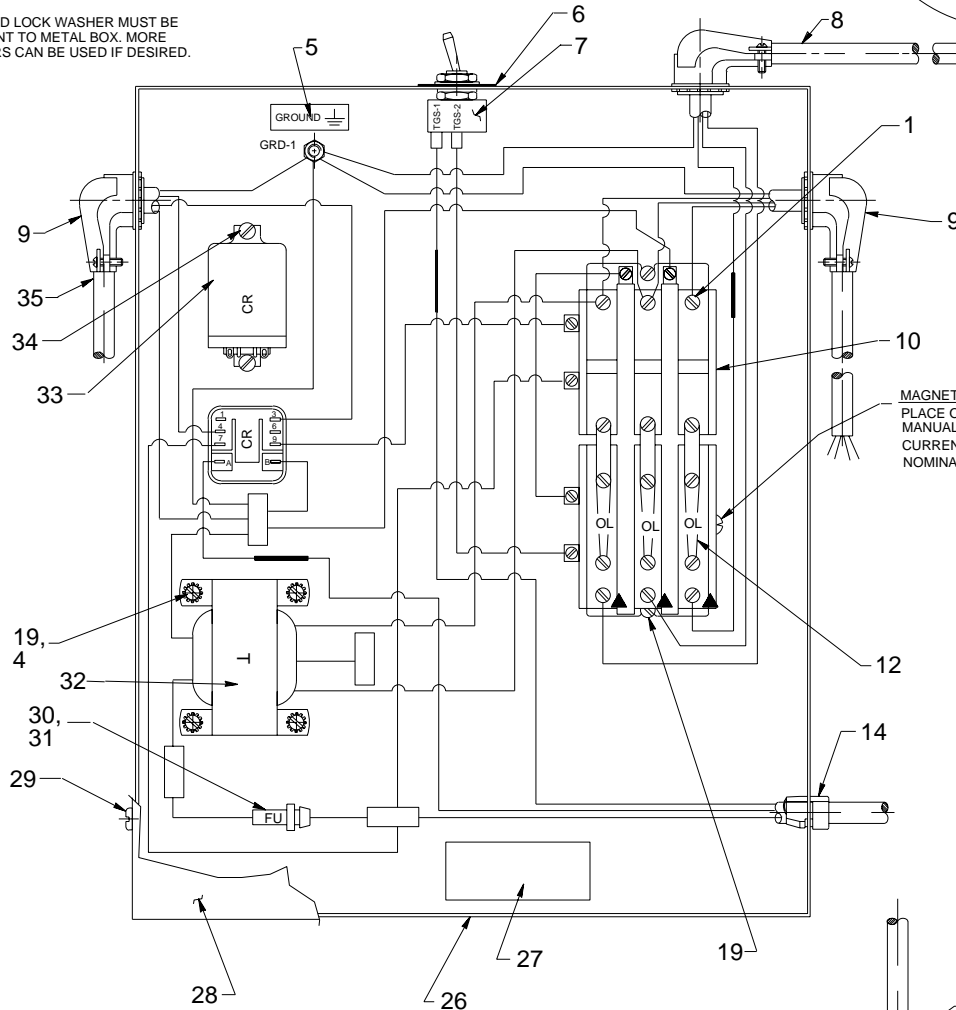
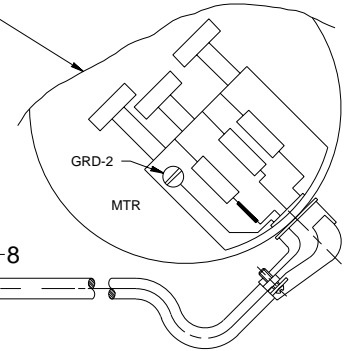
MOTOR CONTROL ASSEMBLY FOR X2E3 & X2E4



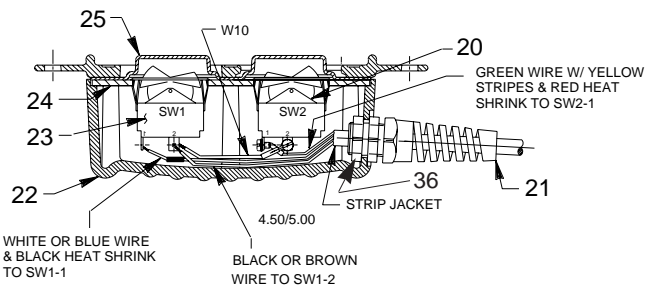
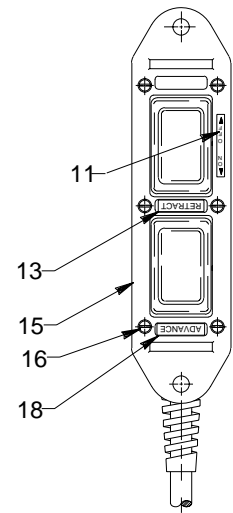
NOTE: SERRATED LOCK WASHER MUST BE ADJACENT TO METAL BOX. MORE WASHERS CAN BE USED IF DESIRED.



FOR PROPER MOTOR VOLTAGE CONNECTION AND ROTATION SEE CONNECTION INFORMATION SUPPLIED WITH MOTOR.

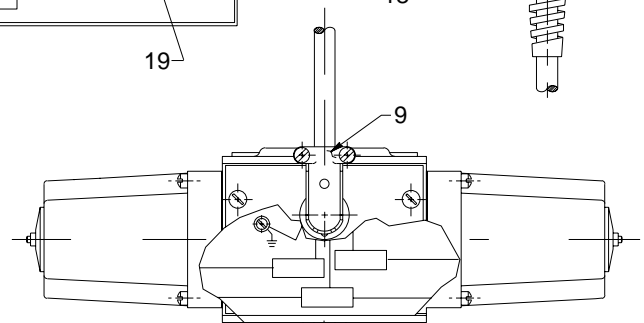


MAGNETIC STARTER ADJUSTMENT
PLACE OVERLOAD RESET IN MANUAL POSITION. SET TRIP CURRENT SELECTOR AT NOMINAL POSITION.



WHITE OR BLUE WIRE & BLACK HEAT SHRINK TO SW1-1

BLACK OR BROWN WIRE TO SW1-2



Parts List, Form No. 101385, Back sheet 6 of 7

Item No.	Part No.	No. Req'd	Description
1	205420	4	Lug Connector
2	10197	2	Nut (#10-24 UNC)
3	11856	1	Machine Screw (#10-24 X 1" Lg.)
4	11108	5	Lockwasher (#10 External Tooth)
5	205189	1	Ground Decal
6	13890	1	Indicator Plate
7	12301	1	Toggle Switch
8	12413	26"	Cable (14/4 SJTO)
9	11144	5	90° Elbow Connector
10	17861-4	1	Starter Relay
11	250538	1	Decal
12	16641-44	3	Heater Element
13	29664	1	Decal (Retract)
14	15993	1	Strain Relief Bushing
15	251044	1	Cover
16	250248	6	Screw (4-24 x 3/4 Lg.)
17	308752	50 ft.	Cable (14/3 SJTO)
18	29663	1	Decal (Advance)
19	11539	6	Machine Screw (#10-24 X 1/4 Lg.)
20	16772	1	Rocker Switch
21	251818	1	Strain Relief Connector



Item No.	Part No.	No. Req'd	Description
22	420050-4	1	Switch Housing
23	46131	1	Rocker Switch
24	420050-3	1	Switch Mounting Plate
25	420050-2	1	Gasket
26	61220GY5	1	Electrical Box
27	250272	1	Decal
28	52357GY5	1	Control Box Cover
29	14812	4	Tap Screw (#8-18 X 3/8 Lg.)
30	16887	1	Fuse Holder
31	16888-8	1	Fuse (8 AMP)
32	38991	1	Transformer (For X2E4)
	350064	1	Transformer (For X2E3)
33	39092	1	Relay
34	10159	2	Machine Screw (#6-32 UNC X 5/16 Lg.)
35	15565	32"	Electrical Cable (16/4 SO)
36	251802	1	Locknut

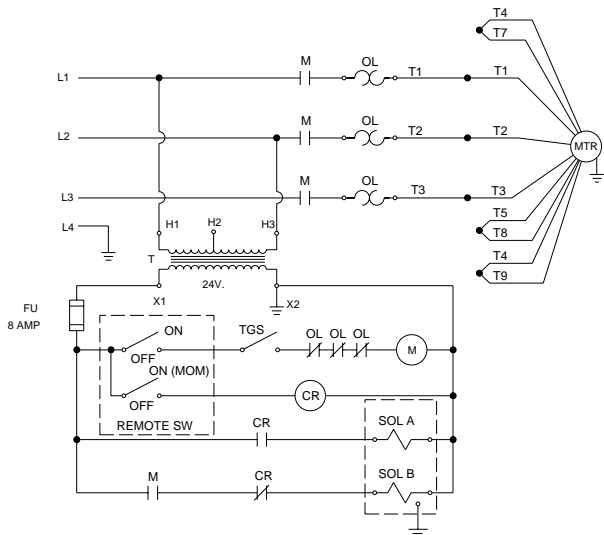
PARTS INCLUDED BUT NOT SHOWN
200188 1 Warning Decal

ELECTRICAL SCHEMATICS FOR X2E3 & X2E4

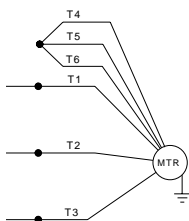


WARNING: To help avoid personal injury, all electrical work must be done by a qualified electrician.

380 V., 50 Hz., Three Phase For X2E3

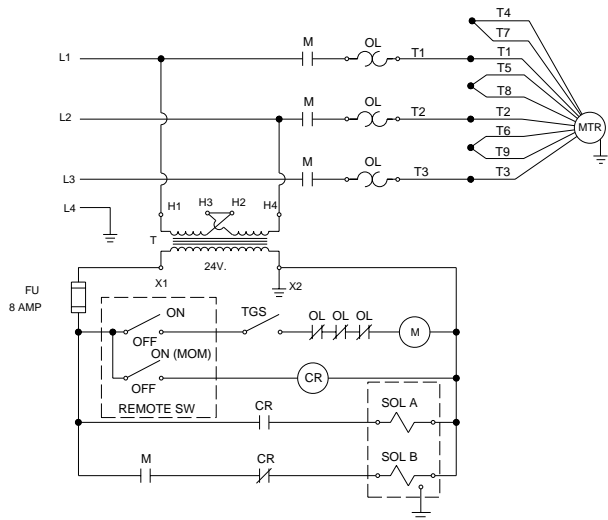


Leeson Motor Connections

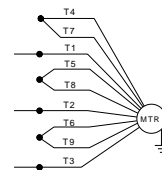


G.E. Motor Connections

460 V., 60 Hz., Three Phase For X2E4

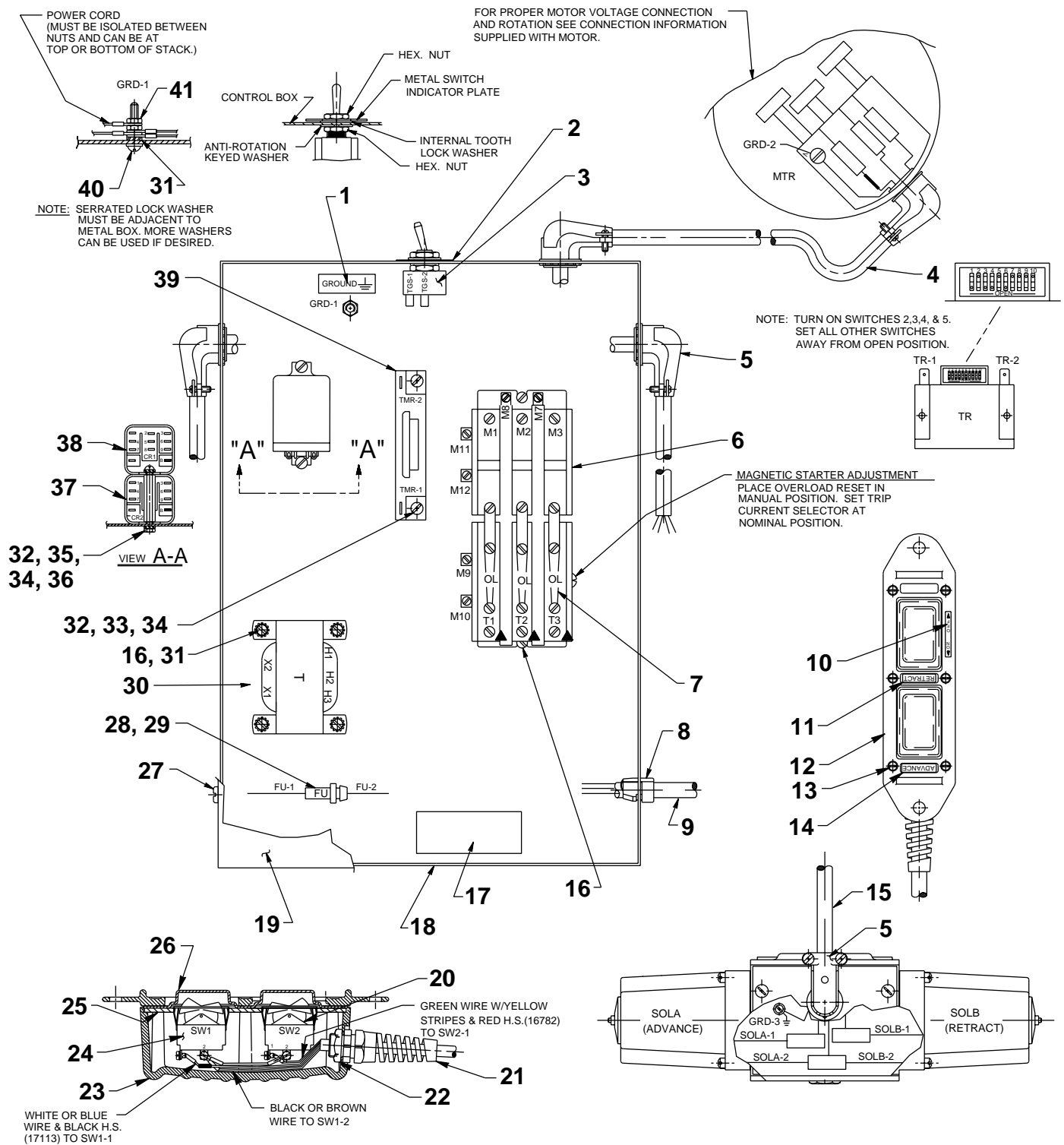


Leeson Motor Connections



G.E. Motor Connections

MOTOR CONTROL ASSEMBLY FOR X2E3-TDS & X2E4-TDS



Item No.	Part No.	No. Req'd	Description
1	205189	1	Decal (Ground)
2	13890	1	Indicator Plate (On/Off)
3	12301	1	Toggle Switch (On/Off)
4	12413	8.16 ft.	Cable (14/4 SO)
5	11144	5	90° Conduit Connector
6	17861-4	1	Magnetic Starter
7	16641-44	3	Heater Element
8	15993	1	Strain Relief Bushing
9	308752	50 ft.	Cable (14/3 SJTO)
10	250538	1	Decal
11	29664	1	Retract Decal
12	251044	1	Cover
13	250248	6	Screw (4-24 x 3/4 Lg.)
14	29663	1	Advance Decal
15	15565	2.67 ft.	Cable (16/4 SO)
16	11539	6	Sl. Rd. Hd. Machine Screw (#10-24 x 1/4 Lg.)
17	250272	1	Decal
18	421183GY5	1	Control Box
19	52357GY5	1	Control Box Cover
20	16772	1	Rocker Switch
21	251818	1	Strain Relief Connector
22	251802	1	Locknut
23	420050-4	1	Switch Housing

Item No.	Part No.	No. Req'd	Description
24	46131	1	Rocker Switch
25	420050-3	1	Switch Mounting Plate
26	420050-2	1	Gasket
27	14812	4	Sl. Pan Hd. Tapping Screw (#8-18 x 3/8 Lg.)
28	16888-8	1	Fuse (8 AMP)
29	16887	1	Fuse Holder
30	350064	1	Transformer (For X2E3-TDS)
31	38991	1	Transformer (For X2E4-TDS)
32	11108	5	Lockwasher (#10 External Tooth)
33	10195	4	Nut (6-32 UNC)
34	15906	6	Lockwasher (#6 External Tooth)
35	11426	2	Machine Screw (6-32 UNC X1/2 Lg.)
36	17563	2	Machine Screw (6-32 UNC X1/4 Lg.)
37	215376	2	Stand off
38	39092	1	Relay
39	305602	1	General Relay
40	251467	1	Timer
41	11856	1	Sl. Rd. Hd. Machine Screw (#10-24 x 1" Lg.)
42	10197	2	Hex. Nut (#10-24)

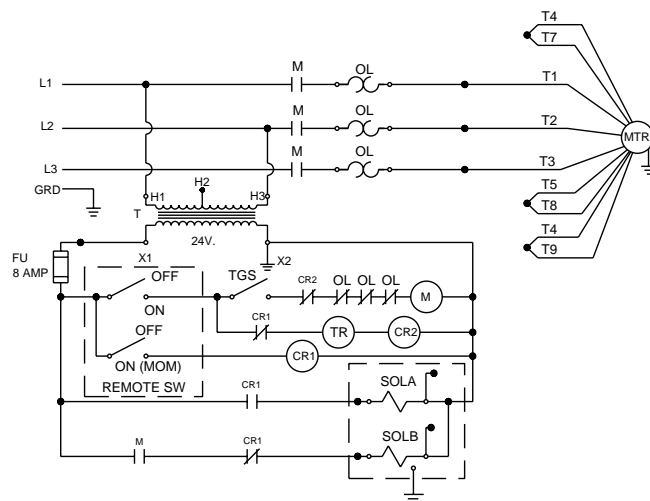


PARTS INCLUDED BUT NOT SHOWN
200188 1 Warning Decal

ELECTRICAL SCHEMATICS FOR X2E3-TDS & X2E4-TDS

WARNING: To help avoid personal injury, all electrical work must be done by a qualified electrician.

380 V., 50 Hz., Three Phase For X2E3-TDS



460 V., 60 Hz., Three Phase For X2E4-TDS

