

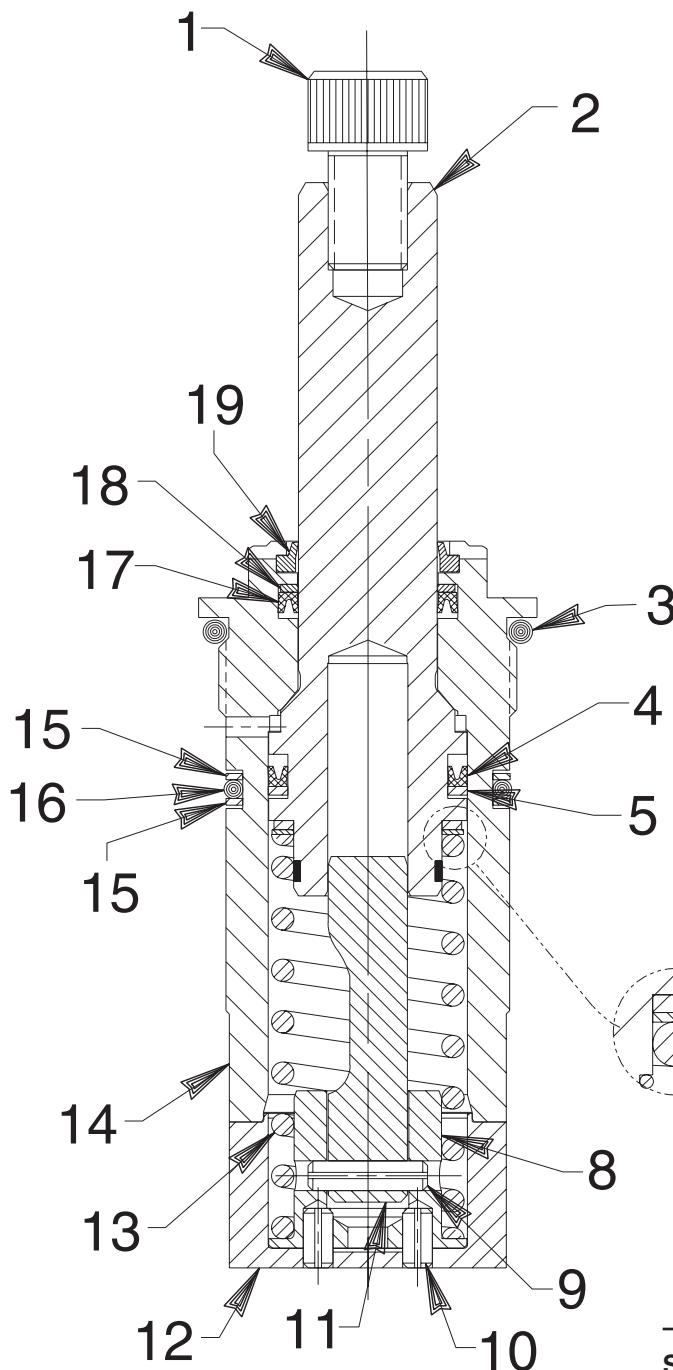
MODEL B  
CARTRIDGE STYLE MOUNT  
**SINGLE-ACTING SWING CLAMP**

Capacity: 2400 lbs. Clamping Force (with 2" lg. arm) at 5,000 PSI Max.

100859 - Left Hand, 1/2" Stroke; 100860 - Right Hand, 1/2" Stroke

100868 - Straight Pull, 1/2" Stroke

To Parts  
List



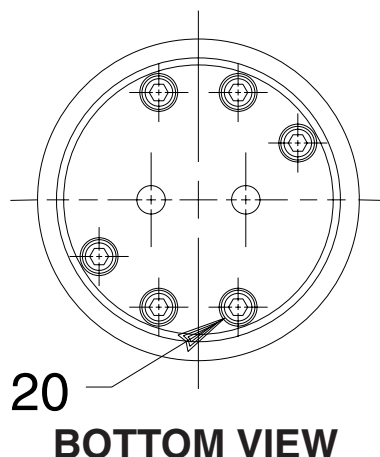
**IMPORTANT!**

Carefully compare teflon washers (Items 5 and 6). Item 5 is the *larger* of the two washers (both inside and outside diameters). **DO NOT REVERSE!**

Refer to any operating instructions included with this product for detailed information about operation, testing, disassembly, reassembly, and preventive maintenance.

Items found in this parts list have been carefully tested and selected. **Therefore: Use only genuine Power Team replacement parts!**

Additional questions can be directed to our Technical Services Department.



Item No.	Part No.	No. Req'd	Description	
1	<b>213836</b>	1	Cap Screw (1/2-20 UNF x 3/4 Lg.; For standard arms. Torque to 45/55 ft. lbs.)	
2	<b>351025</b>	1	Piston Rod, Roller and Retainer Assembly	
3	<b>*15892</b>	1	O-ring (1.956 X 1.720 X .118, -924)	
4	<b>*250620</b>	1	V-ring	
5	<b>*250621</b>	1	Backup Washer (1-1/4 x 1.014 x .048)	
6	<b>*210364</b>	1	Backup Washer (1.175 X .937 X .048)	
7	<b>*251100</b>	1	Special Washer (Note: Assemble with larger radii towards Backup Washer [Item #6]. Must be grease and oil free.)	
8	<b>350294</b>	1	Cam Adapter	
9	<b>10782</b>	1	Pin (Assemble with slot towards bottom of clamp.)	
10	<b>250622</b>	2	Spring Pin (Assemble flush to bottom of End Cap [Item#13] with slots toward center of End Cap.)	
11	<b>350397</b>	1	Rotating Cam (Left Hand† 90° for 100859)	Grease roller in piston rod (Item #2) and cam with a light coating of CDM Extreme Pressure Lube #3.
	<b>350912</b>	1	Rotating Cam (Left Hand† 30°)	
	<b>350913</b>	1	Rotating Cam (Left Hand† 45°)	
	<b>350914</b>	1	Rotating Cam (Left Hand† 60°)	
	<b>350398</b>	1	Rotating Cam (Right Hand† 90° for 100860)	
	<b>350915</b>	1	Rotating Cam (Right Hand† 30°)	
	<b>350916</b>	1	Rotating Cam (Right Hand† 45°)	
	<b>350917</b>	1	Rotating Cam (Right Hand† 60°)	
	<b>350343</b>	1	Rotating Cam (Straight Pull for 100868)	
12	<b>350293</b>	1	End Cap	
13	<b>250619</b>	1	Compression Spring (1-1/4 O.D. x 3-1/2 Lg.)	
14	<b>64337</b>	1	Swing Clamp Body	
15	<b>*19134</b>	2	Backup Washer (1-3/4 x 1-9/16 c .048, -129)	
16	<b>*250909</b>	1	O-ring (1-3/4 x 1-9/16 x 3/32, -129)	
17	<b>*250480</b>	1	V-cup	
18	<b>*250479</b>	1	Backup Washer (1.113 x 7/8 x .048)	
19	<b>*250478</b>	1	Rod Wiper	
20	<b>250618</b>	6	Cap Screw (#6-32 UNC x 1" Lg.; Torque to 30/40 in. lbs.)	

Part numbers marked with an asterisk (\*) are contained in Repair Kit No. 300611.

† Right hand rotation is clockwise rotation when viewed from the piston rod end.  
Left hand is counterclockwise rotation. To reverse clamp rotation,  
order the appropriate rotating cam.

