

MODEL B
ELECTRIC TWO-STAGE HYDRAULIC PUMP
GENERAL SECTION

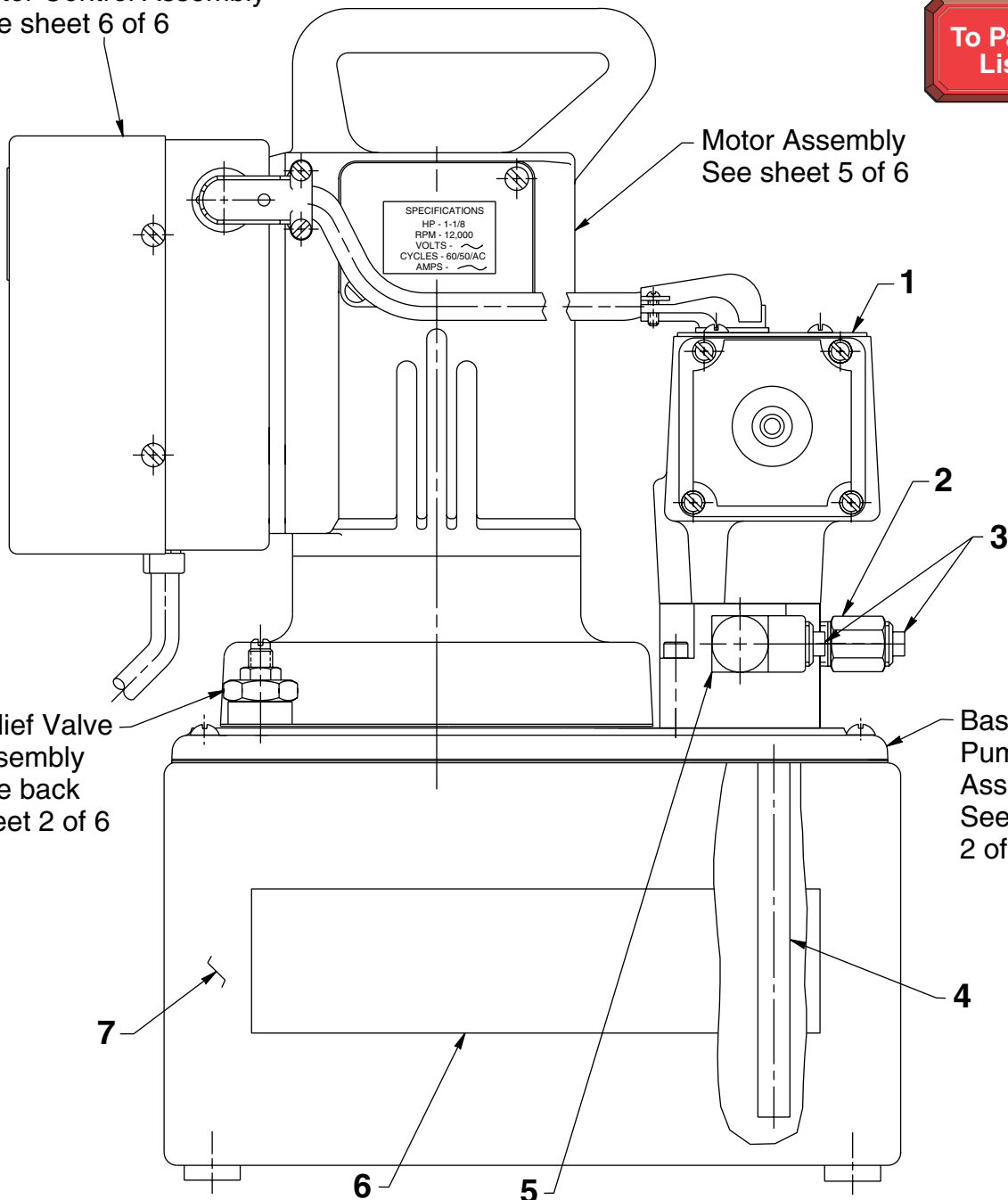
Motor Control Assembly
See sheet 6 of 6



Motor Assembly
See sheet 5 of 6

Relief Valve
Assembly
See back
sheet 2 of 6

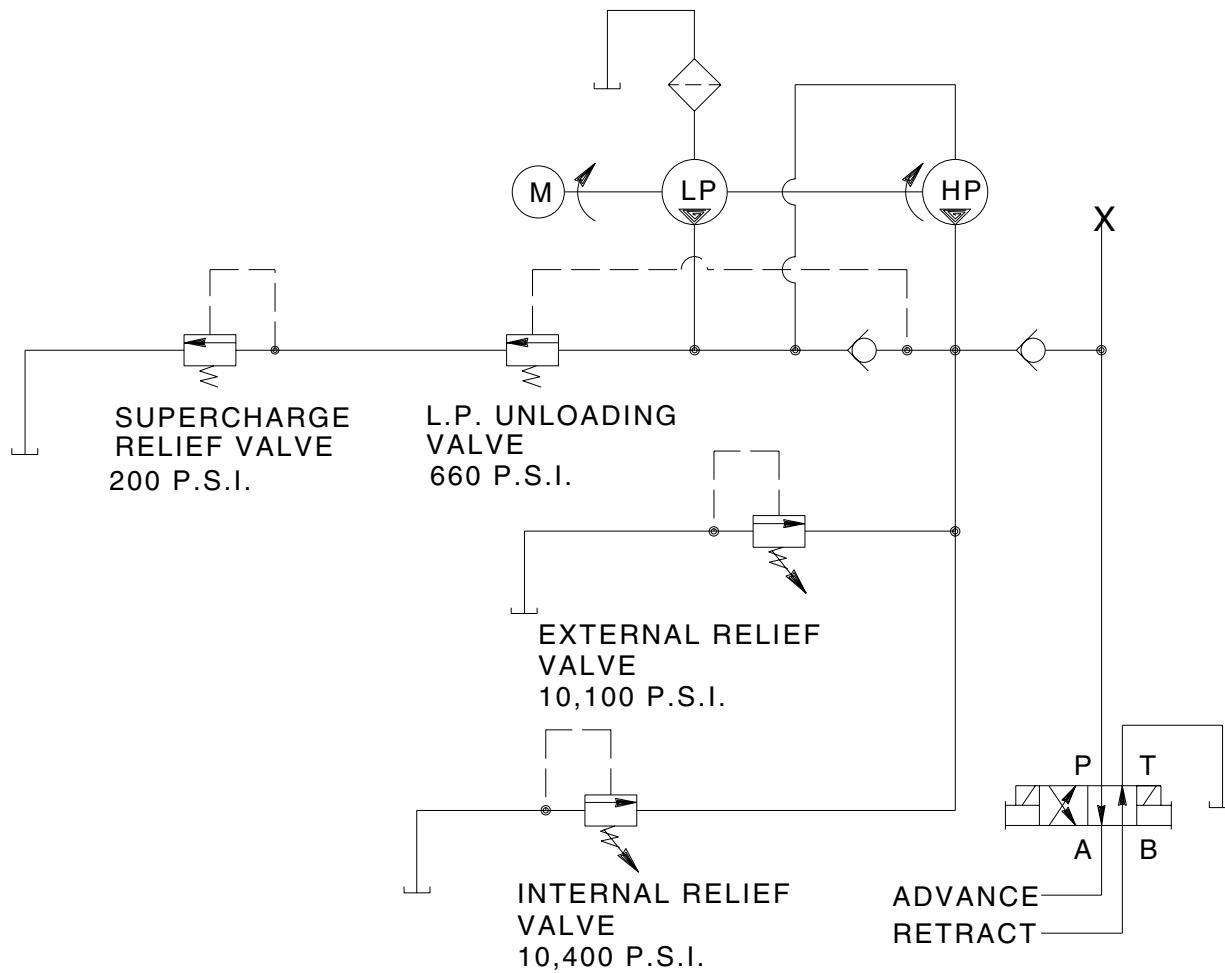
Basic Pump
Assembly
See sheet
2 of 6



Item No.	Part No.	No. Req'd	Description
1	66205-115	1	Solenoid Valve (See Form No. 108066)
2	9689	1	Reducer Connector
3	11127	2	Pressure Plug
4	200609	1	Drain Tube
5	16797	1	90° Elbow Fitting
6	309219	2	Decal
7	40063OR9	1	Reservoir



HYDRAULIC SCHEMATIC



Refer to any operating instructions included with this product for detailed information about operation, testing, disassembly, reassembly, and preventive maintenance.

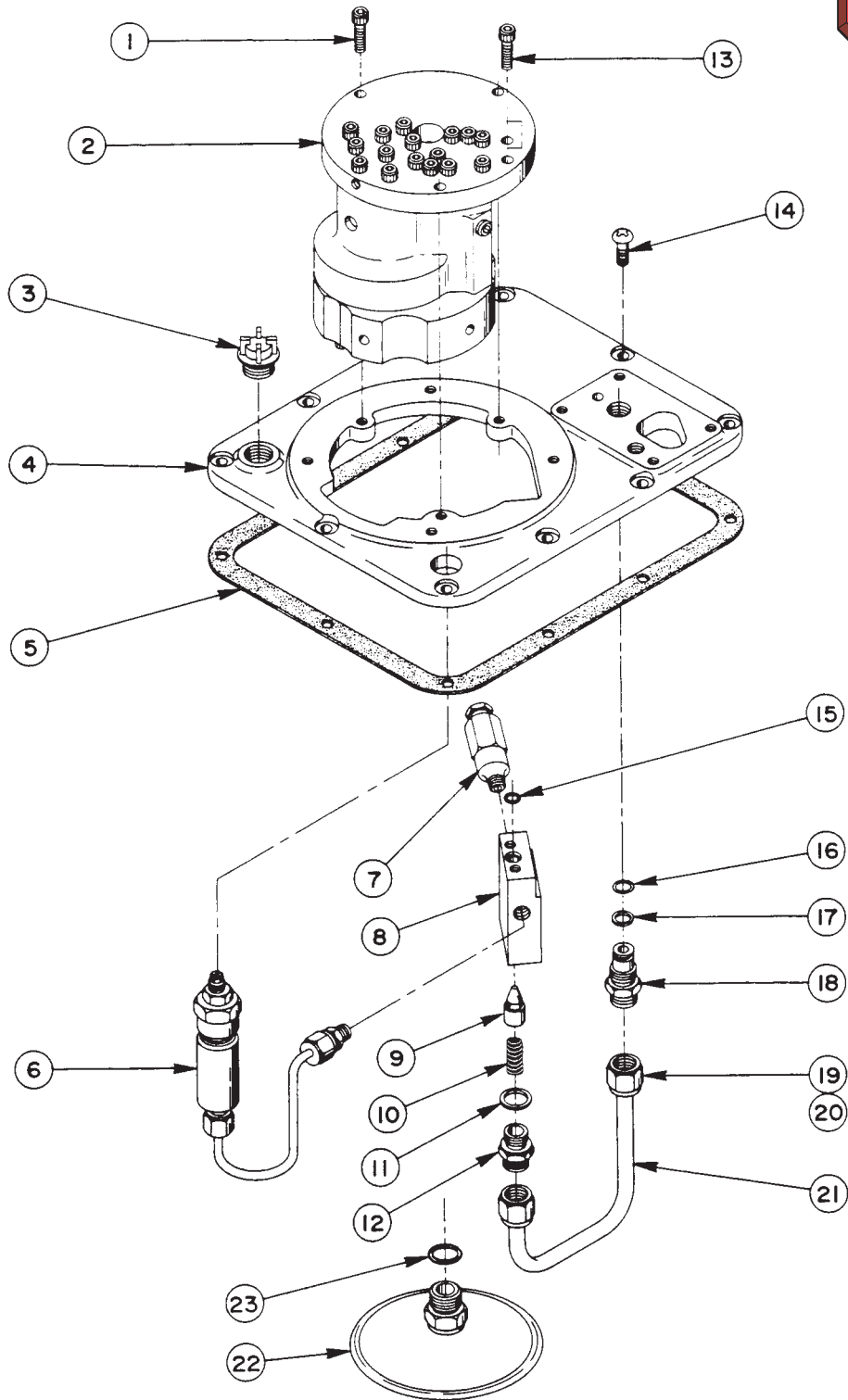
Items found in this parts list have been carefully tested and selected. **Therefore: Use only genuine Power Team replacement parts!**

Additional questions can be directed to our Technical Services Department.

Note: Shaded areas reflect last revision(s) made to this form.

GENERAL PUMP ASSEMBLY

To Parts
List

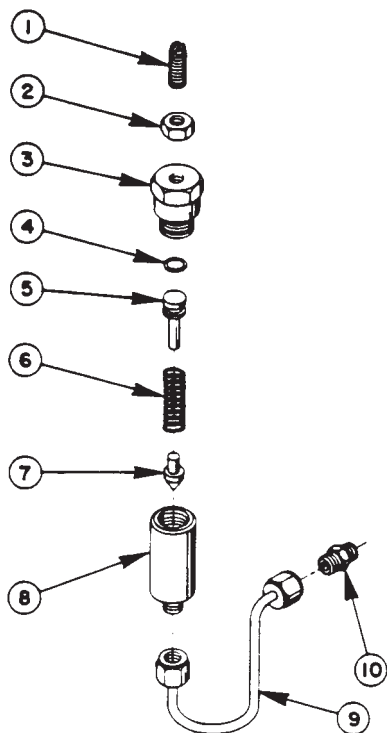


Item No.	Part No.	No. Req'd	Description	Item No.	Part No.	No. Req'd	Description
1	10016	3	Soc. Hd. Cap Screw (1/4-20 UNC X 1" Lg.)	11	10261	1	Copper Washer (3/4 X 19/32 X 1/32)
2	*27207	1	Basic Pump Ass'y Replacement (See chart below)	12	20770	1	Connector (Torque to 40/45 ft. lbs.)
3	20937	1	Filler Plug	13	10015	2	Soc. Hd. Cap Screw (1/4-28 UNF X 1" Lg.; Torque to 180 in. lbs.)
4	40064WH2	1	Cover	14	10177	10	Mach. Screw
5	40164	1	Gasket	15	10266	1	O-ring (3/8 X 1/4 X 1/16)
6	22360	1	Pressure Regulator Ass'y (See below)	16	10268	1	O-ring (1/2 X 3/8 X 1/16)
7	21278	1	Relief Valve (Set at 10,100/10,700 PSI)	17	11863	1	Teflon Backup Washer
8	20776	1	Valve Body	18	20787	1	Valve Connector
9	20771	1	Poppet	19	10430	2	Tube Sleeve
10	10425	1	Compression Spring (3/8 O.D. X 3/4 Lg.)	20	10431	2	Tube Nut
				21	21045	1	Oil Line
				22	21344	1	Filter Ass'y (Includes Item 23)
				23	10300	1	O-ring (5/8 X 15/32 X 5/62)



*Includes all items on sheet 3 of 6 and items 1, 7, 8, 9, 10, 11, 12, 13, 15 & 22 on this sheet.

Series	Max. PSI	Basic Pump & Cover Plate Ass'y	Basic Pump Replacement	High Pressure Pump Ass'y Used	No. of Pistons
PE554S-UK	10,000	50403	*27207	33113	3

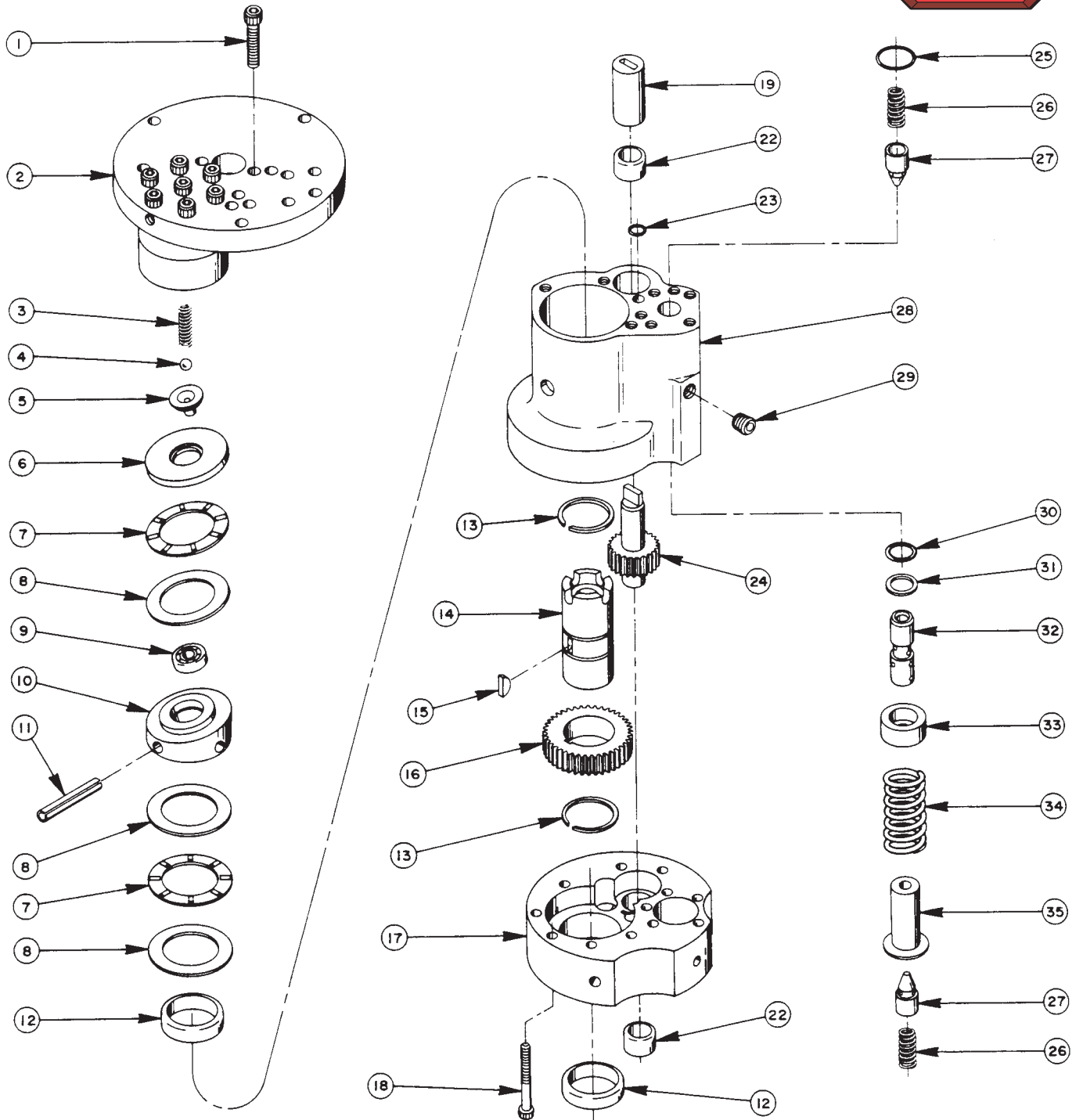


PRESSURE REGULATOR ASSEMBLY

Item No.	Part No.	No. Req'd	Description
1	22362	1	Adjusting Screw
2	10386	1	Hex Jam Nut
3	21305	1	Valve Cap
4	10268	1	O-ring (1/2 X 3/8 X 1/16)
5	21306	1	Spring Guide
6	10495	1	Compression Spring (1/2 O.D. X 1-5/8 Lg.)
7	21046	1	Valve Stem
8	22361	1	Body
9	29267	1	Oil Line Ass'y (With nuts)
10	14844	1	Connector Fitting

BASIC PUMP ASSEMBLY

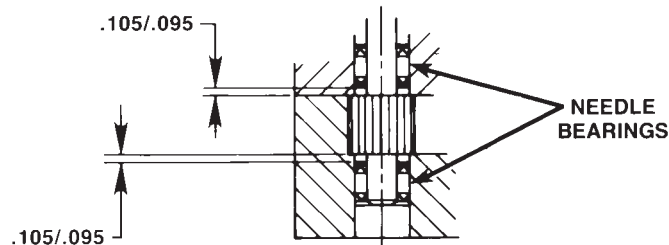
To Parts List



Item No.	Part No.	No. Req'd	Description
1	10020	9	Soc. Hd. Cap Screw (1/4-20 UNC X 1-1/4 Lg.; Torque to 170-180 in. lbs.)
2	33113	1	High Pressure Pump Ass'y (See sheet 4 of 6 & chart on back of sheet 2 of 6)
3	10361	1	Compression Spring (1/4 O.D. X 1" Lg.)
4	10375	1	Steel Ball (1/4" dia.)
5	23547	1	Bearing Top Plate
6	23548	1	Top Plate
7	11228	2	Thrust Bearing
8	11813	3	Bearing Race
9	11814	1	Ball Bearing
10	23549	1	Angle Plate
11	11955	1	Roll Pin (1/4" dia. X 1-3/4 Lg.)
12	11064	2	Needle Bearing
13	11261	2	Retaining Ring
14	23556	1	Shaft
15	11821	1	Woodruff Key
16	23574	1	Gear
17	40072	1	Pump End Plate
18	10001	13	Soc. Hd. Cap Screw (#10-32 UNF X 1-3/4" Lg.; Torque to 50 in. lbs.)
19	21091	1	Zinc Coupling
20	21092	1	Adapter
21	21093	1	Key
22	11198	2	Needle Thrust Bearing (See Note below)
23	10266	1	O-ring (3/8 X 1/4 X 1/16)
24	20774	1	Drive Gear
25	10303	1	O-ring (7/8 X 3/4 X 1/16)
26	10425	2	Compression Spring (3/8 O.D. X 3/4 Lg.)
27	20771	2	Poppet
28	40071	1	Pump Body
29	10427	1	Pipe Plug (1/8" NPTF)
30	10271	1	O-ring (11/16 X 1/2 X 3/32)
31	12389	1	Teflon Backup Washer (11/16 X 1/2 X 1/16)
32	20849	1	Spool
33	23255	1	Spring Guide
34	10426	1	Compression Spring (1" O.D. X 1-13/16 Lg.)
35	23256	1	Spring Guide

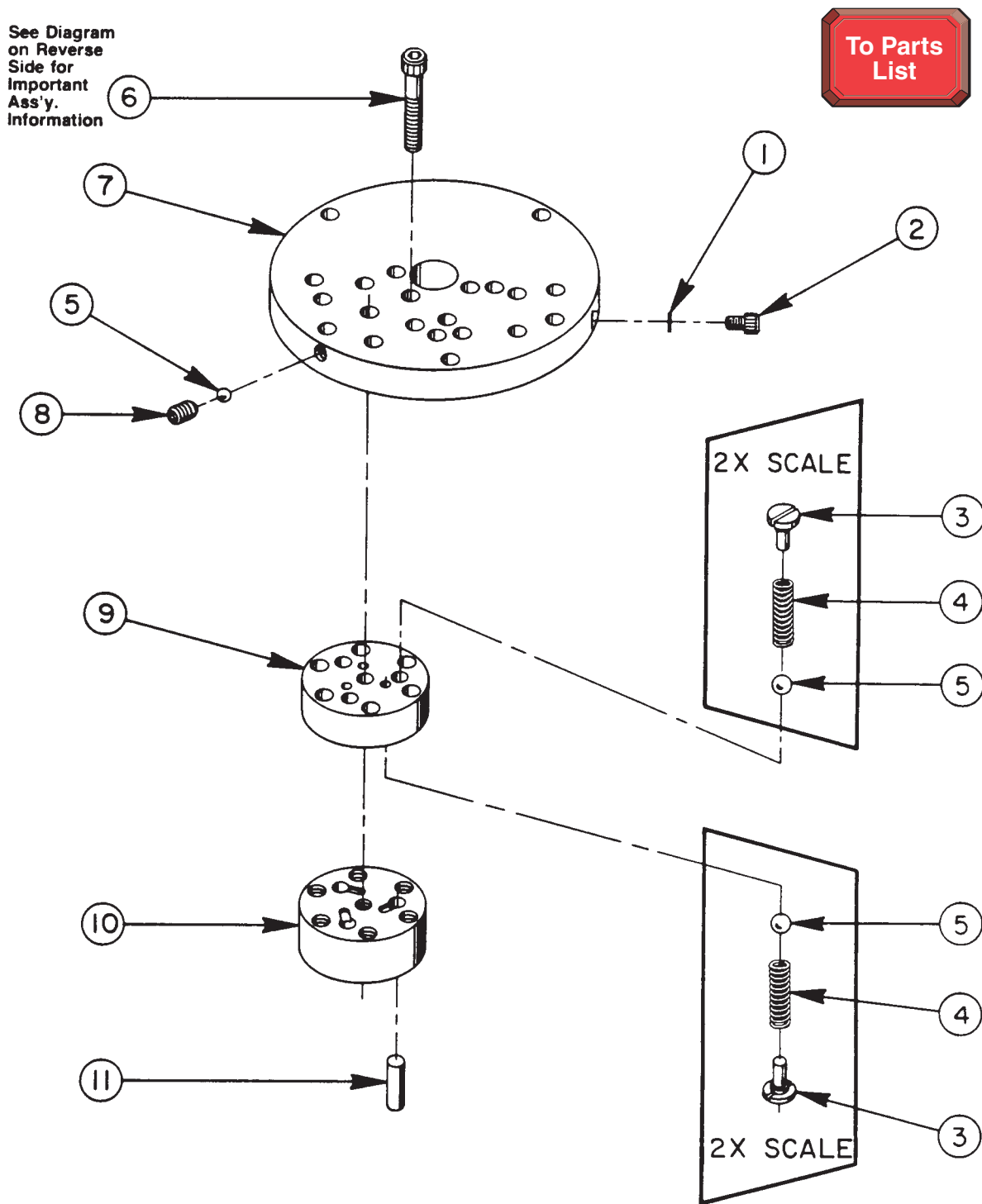


NEEDLE BEARING INSTALLATION SPECIFICATIONS



When replacing the needle bearings on the drive gear of the basic pumps, the dimensions shown must be as specified.

HIGH PRESSURE PUMP ASSEMBLY

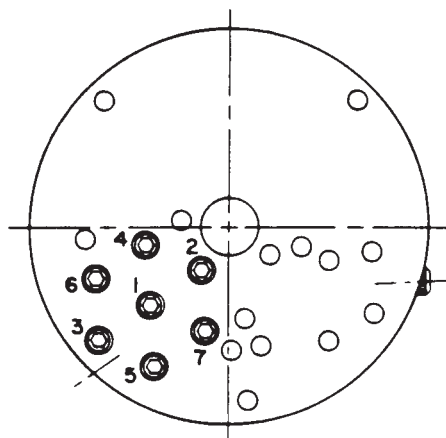


33113 PUMP ASS'Y
3 Pistons -- 9/32 Dia.

Item No.	Part No.	No. Req'd	Description
1	10442	1	Copper Washer (3/8 X 1/4 X 1/32)
2	10002	1	Soc. Hd. Cap Screw (1/4-20 UNC X 3/8" Lg.; Torque to 140/160 in. lbs.)
3	24549	6	Valve Guide
4	10445	6	Compression Spring (5/32" O.D. X 3/4" Lg.)
5	12223	7	Steel Ball
6	10023	7	Soc. Hd. Cap Screw (1/4-20 UNF X 1-1/2" Lg.; Torque to 170/180 in. lbs.; See note below)
7	50411	1	Top Plate
8	10519	1	Soc. Set Screw (1/4-20 UNC X 3/8 Lg.; Torque to 65/70 in. lbs.)
9	40630	1	Valve Head
10	41062	1	Pump Barrel
11	21628	3	Piston



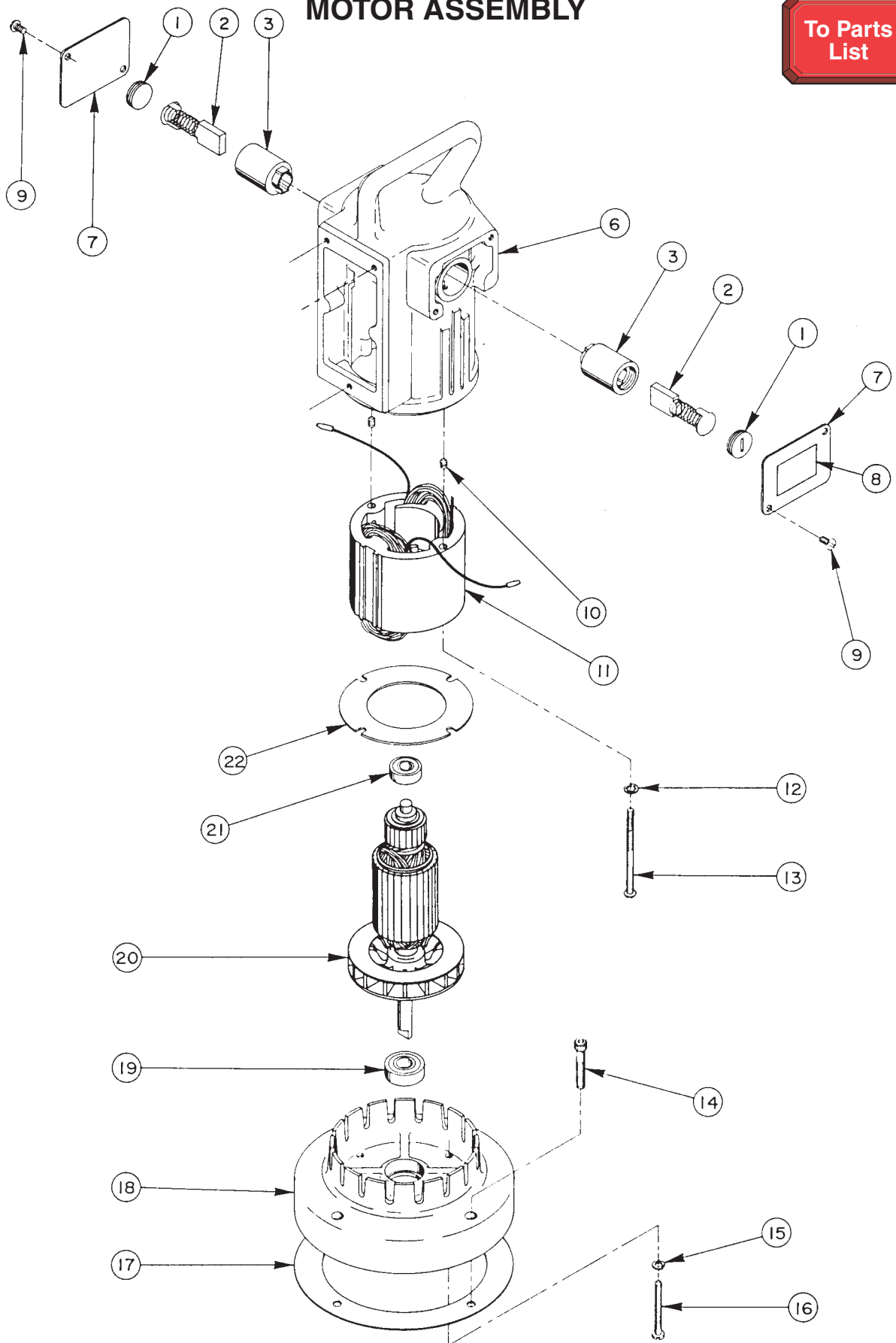
BOLT TIGHTENING SEQUENCE



NOTE: Assemble in sequence shown. Lubricate under head and on threads. Torque to 180 in. lbs.

MOTOR ASSEMBLY

To Parts List

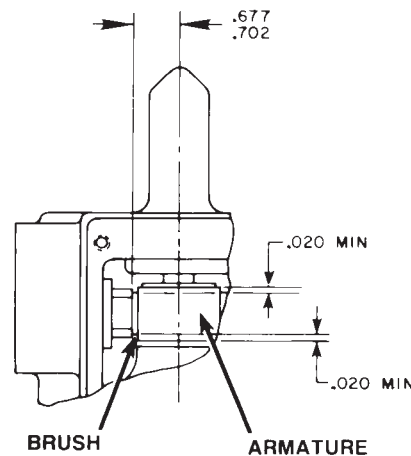


Item No.	Part No.	No. Req'd	Description	Item No.	Part No.	No. Req'd	Description
1	10806	2	Brush Holder Cap	14	10022	4	Cap Screw (1/4-20 X 1-1/2" Lg.)
2	10804	2	Brush Assembly	15	10241	4	Lockwasher
3	10805	2	Brush Holder (See note below)	16	10169	4	Mach. Screw (#10-24 X 2" Lg.; Torque to 20/25 in lbs.)
6	61901	1	Motor Shell	17	30650	1	Gasket
7	21008	2	Cover	18	40059	1	Motor Base
8	215164	1	Spec. Decal (For 115 volt)	19	10439	1	Ball Bearing
9	11539	2	Mach. Screw (#10-24 X 1/4 Lg.)	20	10800	1	Armature (For 115 volt; See note below)
10	10133	2	Set Screw	21	10438	1	Ball Bearing
11	10802	1	Field (For 115 volt)	22	20786	1	Baffle Plate
12	12356	2	Lockwasher				
13	10170	2	Mach. Screw				

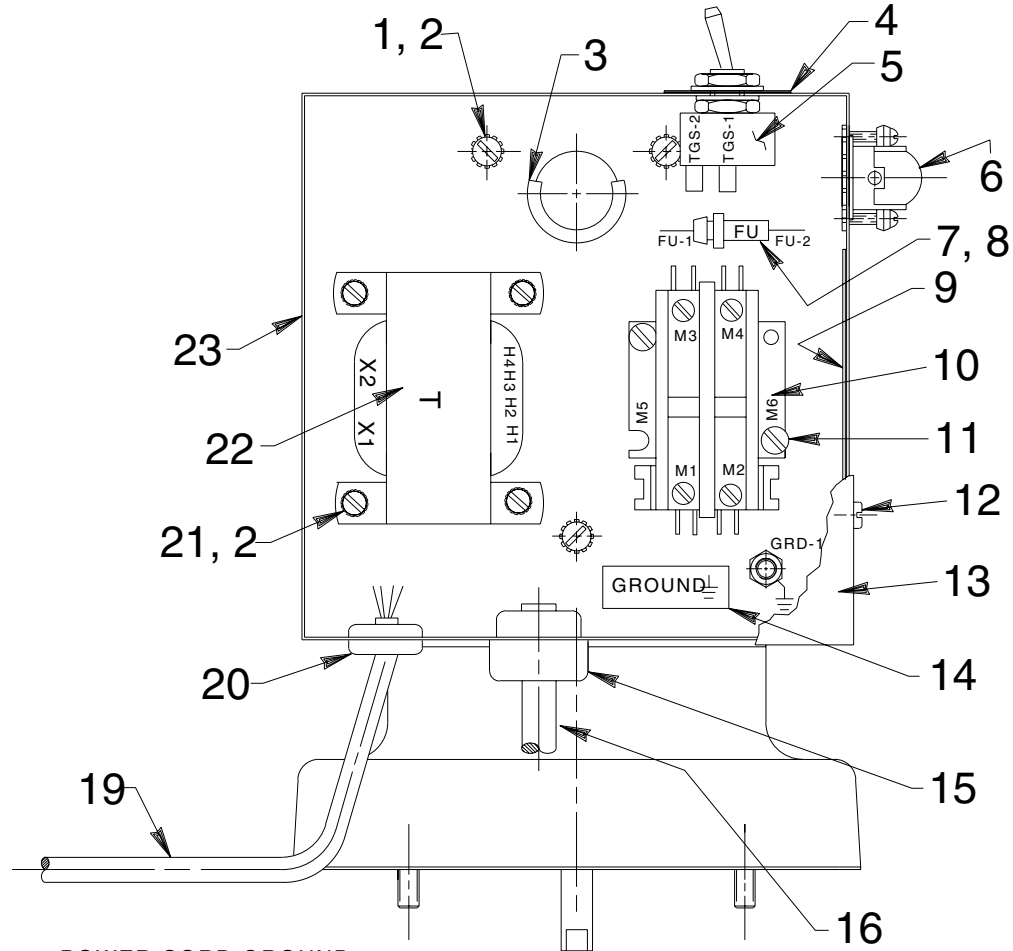
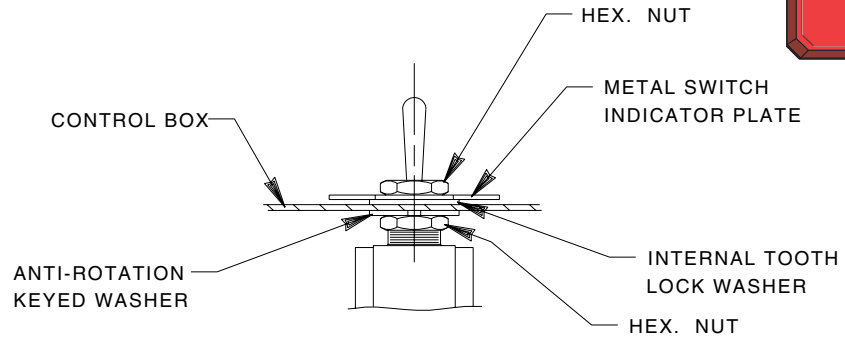


BRUSH HOLDER & ARMATURE INSTALLATION SPECIFICATIONS

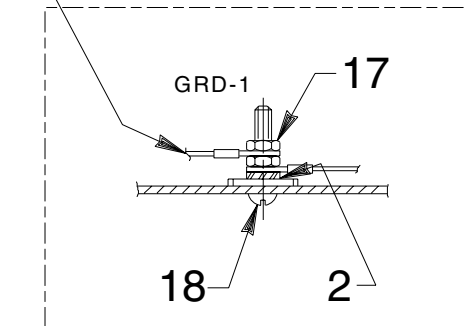
When replacing brushes or the armature, the dimensions shown must be as specified.



MOTOR CONTROL ASSEMBLY



POWER CORD GROUND
(MUST BE ISOLATED BETWEEN
NUTS AND CAN BE AT
TOP OR BOTTOM OF STACK.)



NOTE: SERRATED LOCK WASHER
MUST BE ADJACENT TO
METAL BOX. MORE WASHERS
CAN BE USED IF DESIRED.

Item No.	Part No.	No. Req'd	Description
1	10164	3	Slotted Screw (#10-24 UNC X 3/8 Lg.)
2	11108	8	Lockwasher (#10 External Tooth)
3	15497	1	Grommet
4	13890	1	Indicator Plate
5	12301	1	Toggle Switch
6	11144	2	90° Elbow Connector (Note: One on control box; one on solenoid valve)
7	16887	1	Fuse Holder
8	16888-8	1	Fuse
9	250272	1	Decal
10	420718-4	1	Contactors
11	10166	2	Machine Screw (#10-24 UNC X 1/2 Lg.)
12	14812	4	Tap Screw (#8-18 X 3/8 Lg.)
13	43126WH2	1	Control Box Cover
14	205189	1	Ground Decal

Item No.	Part No.	No. Req's	Description
15	210112	1	Strain Relief Bushing
16	307440	1	Cord Set (115 V.)
17	10197	2	Nut (#10-24 UNC)
18	11856	1	Machine Screw (#10-24 X 1" Lg.)
19	15565	2.5 ft.	Electrical Cable (16/4 SO)
20	15993	1	Strain Relief Bushing
21	11539	4	Machine Screw (#10-24 X 1/4 Lg.)
22	350072	1	Transformer
23	51218WH2	1	Electrical Control Box

PARTS INCLUDED BUT NOT SHOWN

200188	1	Warning Decal
304718	1	Remote Switch (See Parts List no. 101644)



ELECTRICAL SCHEMATIC

110 V. , 50 Hz

