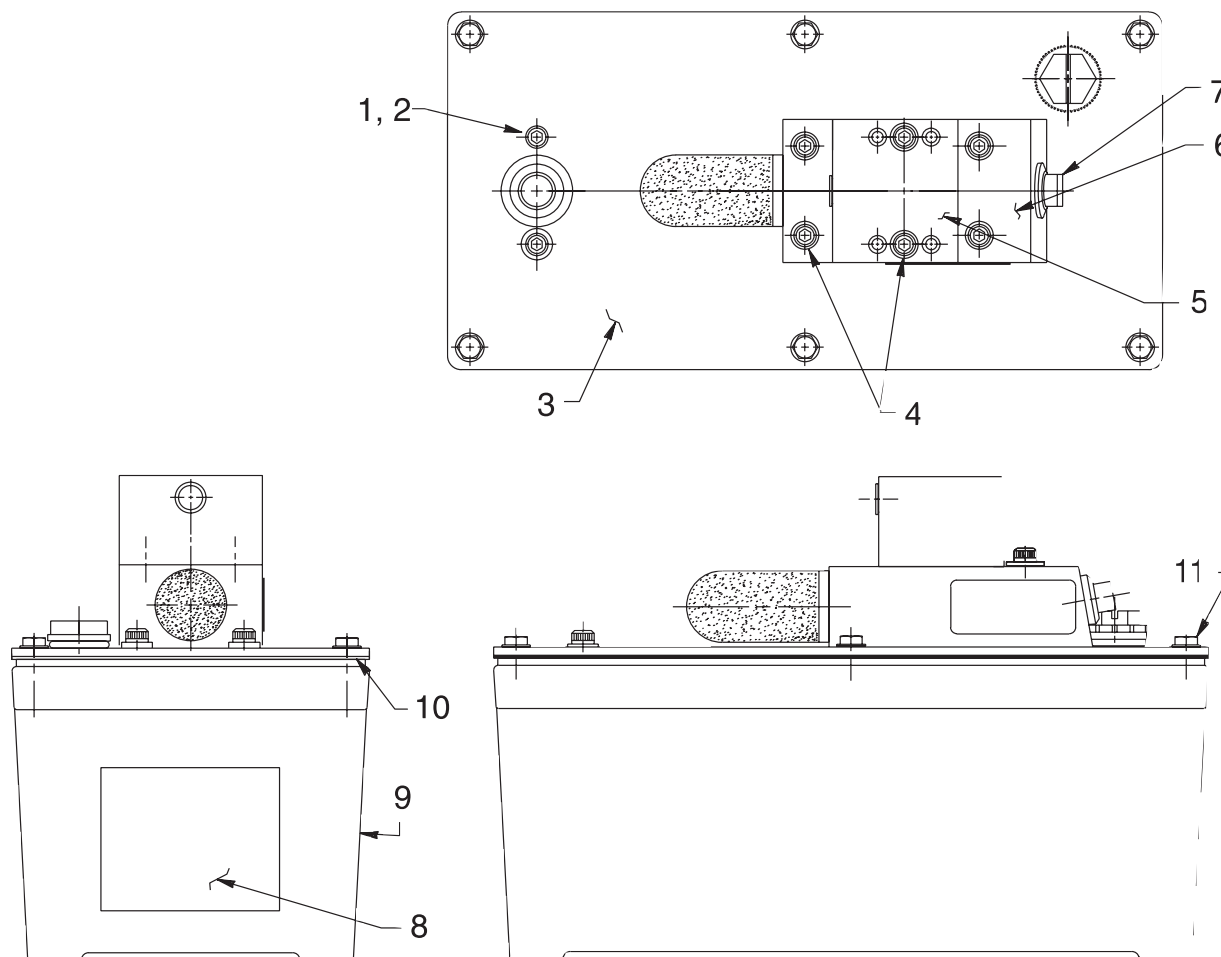


## MODEL F

# AIR HYDRAULIC PUMP

Max. Capacity: 7,400 PSI (510 Bar)



Item No.	Part No.	No. Req'd	Description
1	<b>11434</b>	2	Cap Screw (10-24 UNC X 1/2 Lg.)
2	<b>11089</b>	2	Flat Washer (#10 bolt)
3	<b>420965BK2</b>	1	Cover Plate
4	<b>11151</b>	6	Cap Screw (10-24 UNC X 1-1/4" Lg.; Torque to 50/60 in. lbs.)
5	<b>420293</b>	1	Valve Body
6	<b>58685</b>	1	Release Valve Body
7	<b>11127</b>	1	Plug (3/8 NPTF)
8	<b>*305494</b>	1	Decal
9	<b>61243</b>	1	Reservoir
10	<b>*33853</b>	1	Reservoir Gasket

Item No.	Part No.	No. Req'd	Description
11	<b>211060</b>	6	Screw (#9-15 X 1" Lg.; Torque to 25/30 in. lbs.)

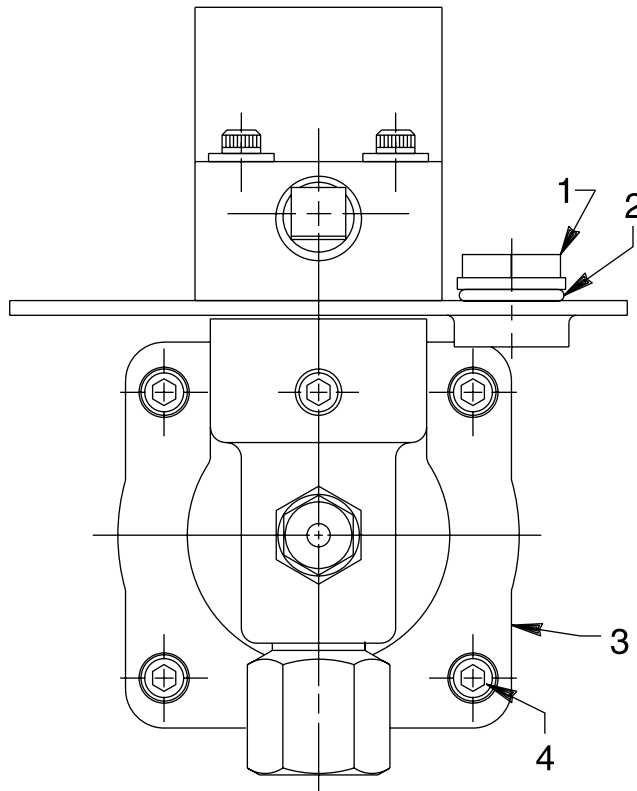
### PARTS INCLUDED BUT NOT SHOWN

**211060** 4 Screw (#9-15 X 1" Lg.; For mounting purposes only.)

Part numbers marked with an asterisk (\*) are contained in Repair Kit No. 300838.

**Rotary Lift No. IN30090**

# BASIC PUMP ASSEMBLY END VIEW



Item No.	Part No.	No. Req'd	Description
1	251689	1	Filler/Breather Cap
2	*10273	1	O-ring (13/16 X 5/8 X 3/32)
3	64767	1	Pump Body
4	17428	4	Soc. Hd. Cap Screw (1/4-20 X 4" Lg. Torque to 85/95 in. lbs. oiled. Note: Cross torque in increments of 30 in. lbs.)

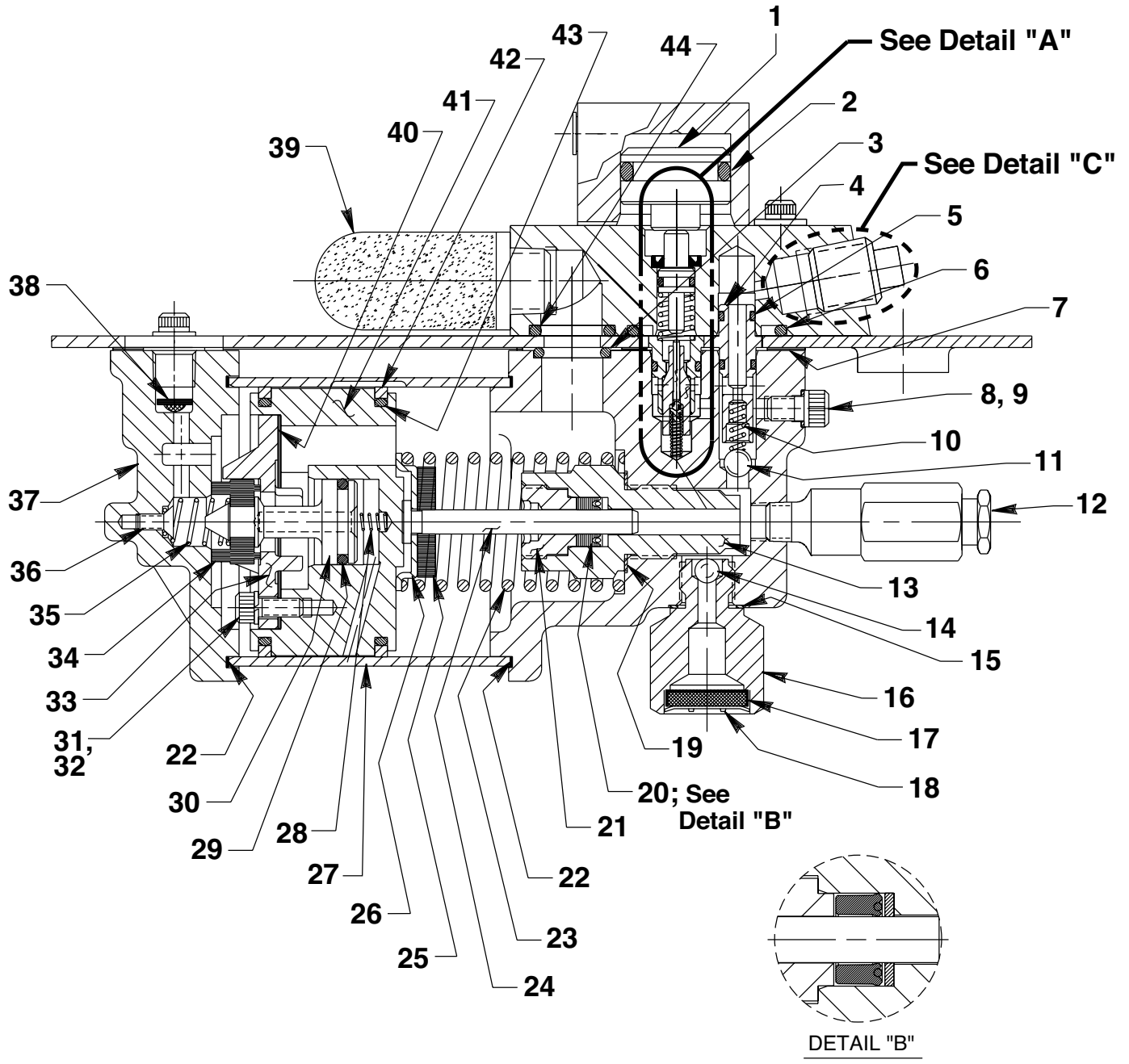
Part numbers marked with an asterisk (\*) are contained in Repair Kit No. 300838.

Refer to any operating instructions included with this product for detailed information about operation, testing, disassembly, reassembly, and preventive maintenance.

Items found in this parts list have been carefully tested and selected. **Therefore: Use only genuine Power Team replacement parts!**

Additional questions can be directed to our Technical Services Department.

## BASIC PUMP ASSEMBLY



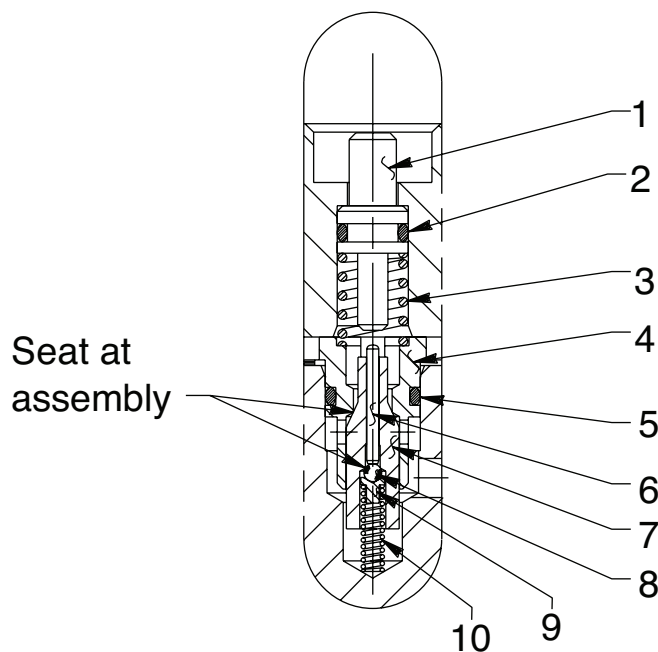
Item No.	Part No.	No. Req'd	Description
1	<b>34757</b>	1	Release Piston
2	<b>*208144</b>	1	O-ring (1-1/8" X 7/8 X 1/8; Apply Lubricant)
3	<b>*10272</b>	1	O-ring (3/4 X 9/16 X 3/32)
4	<b>34378</b>	1	Check Valve Body
5	<b>*12522</b>	2	O-ring (3/8 X 1/4 X 1/16; Urethane)
6	<b>*11841</b>	1	O-ring (1-5/8" X 1-3/8" X 1/8)
7	<b>*351021</b>	1	Gasket
8	<b>*10442</b>	1	Copper Washer (3/8 X 1/4 X 1/32)
9	<b>10002</b>	1	Soc. Hd. Cap Screw (1/4-20 UNC X 3/8 Lg., Torque to 90/110 in. lbs.)
10	<b>*10445</b>	1	Compression Spring (5/32 O.D. X 3/4 Lg.)
11	<b>*10423</b>	1	Steel Ball (9/32 Dia.)
12	<b>21278-70</b>	1	Relief Valve Ass'y (For PA4-ADV; Set at 7,100/7,700 PSI)
	<b>21278-57</b>	1	Relief Valve Ass'y (For AP02528; Set at 5,800/6,400 PSI)
	<b>21278-60</b>	1	Relief Valve Ass'y (For AP03715; Set at 6,100/6,700 PSI)
	<b>21278-83</b>	1	Relief Valve Ass'y (For AP02529; Set at 8,400/9,000 PSI)
13	<b>45278</b>	1	Piston Cylinder (Torque to 90/100 ft. lbs. oiled)
14	<b>*10375</b>	1	Steel Ball (1/4 Dia.)
15	<b>*10261</b>	1	Soft Copper Washer (3/4 X 19/32 X 1/32)
16	<b>308893</b>	1	Filter Adapter (Torque to 40/50 ft. lbs. oiled.)
17	<b>214578</b>	1	Filter
18	<b>214586</b>	1	Retaining Ring (Internal)
19	<b>*10263</b>	1	Soft Copper Washer (1" X .765 X 1/32)
20	<b>*13934</b>	1	U-cup & Backup
21	<b>*304295</b>	1	Retainer (Note: See "INSTRUCTIONS FOR RETAINER REPLACEMENT"

(Apply loctite  
592 [Power  
Team  
#905516]  
or equiv. &  
torque to  
150/170 in.  
lbs.)

Item No.	Part No.	No. Req'd	Description
22	<b>*17429</b>	2	Backup Washer (2-15/16" X 2-3/4" X .045)
23	<b>*13938</b>	1	Compression Spring (1.452 O.D. X 4-7/16" Lg.)
24	<b>28226</b>	1	Piston
25	<b>203143</b>	1	Bumper
26	<b>210994</b>	1	Spring Guide
27	<b>37434</b>	1	Air Cylinder (Note: Locate groove on upper half [top] of pump with chamfered tube end towards rear head as shown.)
28	<b>*12692</b>	1	Compression Spring (3/16 O.D. X 1-11/16" Lg.)
29	<b>*211052</b>	1	O-ring (.900 X .706 X .097)
30	<b>305475</b>	1	Exhaust Valve Stem
31	<b>*10241</b>	3	Lockwasher (For #10 bolt)
32	<b>211054</b>	3	Soc. Hd. Cap Screw (#10-24 X 1/2 Lg.; Torque to 50/55 in. lbs.)
33	<b>33822</b>	1	End Piston Plate
34	<b>*28183</b>	1	Piston Poppet
35	<b>*205679</b>	1	Compression Spring (.485 O.D. X .915 Lg.)
36	<b>*205674</b>	1	Flat Hd. Screw (8-32 UNC X 3/8 Lg.; Torque to 12/18 in. lbs.)
37	<b>37468</b>	1	Rear Head
38	<b>*216296</b>	1	Screen
39	<b>*250461</b>	1	Muffler
40	<b>*28239</b>	1	Gasket
41	<b>52390</b>	1	Piston Body
42	<b>*14265</b>	2	Piston Seal
43	<b>*251835</b>	2	O-ring (2-1/2" X 2-5/16" X 3/32)
44	<b>*10276</b>	1	O-ring (1" X 3/4 X 1/8)

Part numbers marked with an asterisk (\*)  
are contained in Repair Kit No. 300838.

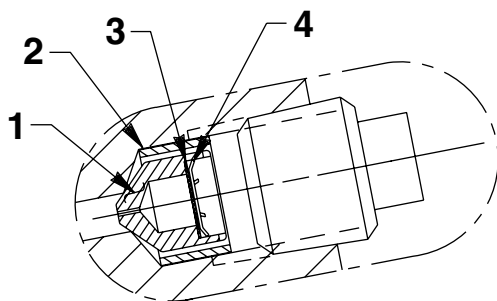
## DETAIL "A"



Item No.	Part No.	No. Req'd	Description
1	<b>28227</b>	1	Release Valve
2	<b>*12522</b>	1	O-ring (.37 X .25 Urethane)
3	<b>*13944</b>	1	Compression Spring (3/8 O.D. X 1/2 Lg.)
4	<b>34377</b>	1	Retainer Poppet
5	<b>*13943</b>	1	O-ring (1/2 X 3/8 X 1/16)
6	<b>13937</b>	1	Dowel Pin (Note: Place tapered end toward ball.)
7	<b>29037</b>	1	Release Valve Poppet
8	<b>*14443</b>	1	Steel Ball (3/32 Dia.)
9	<b>209736</b>	1	Ball Retainer
10	<b>*13959</b>	1	Compression Spring (1/8 O.D. X 1/2 Lg.)

Part numbers marked with an asterisk (\*)  
are contained in Repair Kit No. 300838.

## DETAIL "C" (FOR AP02528 & AP02529)



Item No.	Part No.	No. Req'd	Description
1	251966	1	Poppet (For AP02528)
	215868	1	Poppet (For AP02529)
2	214583	1	Retaining Sleeve
3	214596	1	Filter Disc
4	12201	1	Retaining Ring

## INSTRUCTIONS FOR RETAINER REPLACEMENT

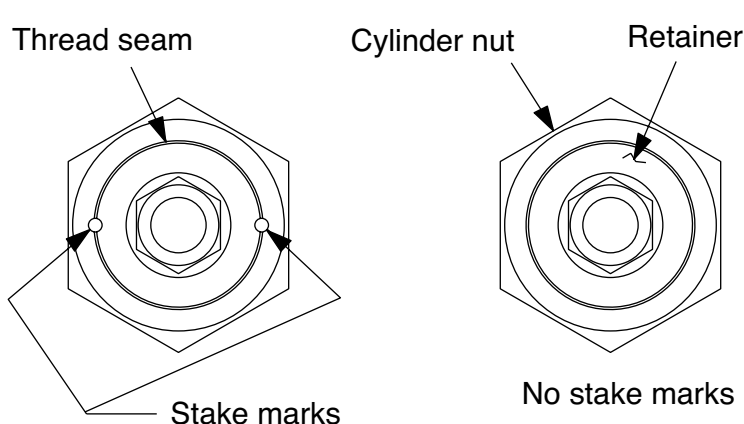
Your pump's retainer is locked into place by one of the two following methods. Determine which method was used on your pump's retainer, then follow the appropriate steps to remove the old and install and stake the new.

### Method 1 - Retainer shows no sign of stake marks

1. This retainer has been locked in place with a Loctite product. To replace it, a moderate amount of heat needs to be applied to the cylinder nut (in the area of the retainer) to soften the existing Loctite allowing it to be removed.
2. Install the new retainer into the cylinder nut and torque to 80/100 in. lbs. **Note: Do not use a Loctite product this time but stake the new retainer in place according to instructions in Step 3.**
3. To lock retainer into place, use a center punch positioned in the seam between the retainer and the cylinder nut and stake the new retainer in two places approximately 180° apart.

### Method 2 - Retainer has two stake marks in the seam between the retainer and the cylinder nut

1. For replacement of this retainer, the stake marks must be removed. Using a 1/8" or larger diameter drill bit, remove the existing stakes by drilling a short distance into the stake marks. Remove the retainer.
2. Install the new retainer into the cylinder nut and torque to 80/100 in. lbs.
3. To lock retainer into place, use a center punch positioned in the seam between the retainer and the cylinder nut and stake the new retainer in two places approximately 180° apart.



**NOTE: Do not stake in the old stake marks.**