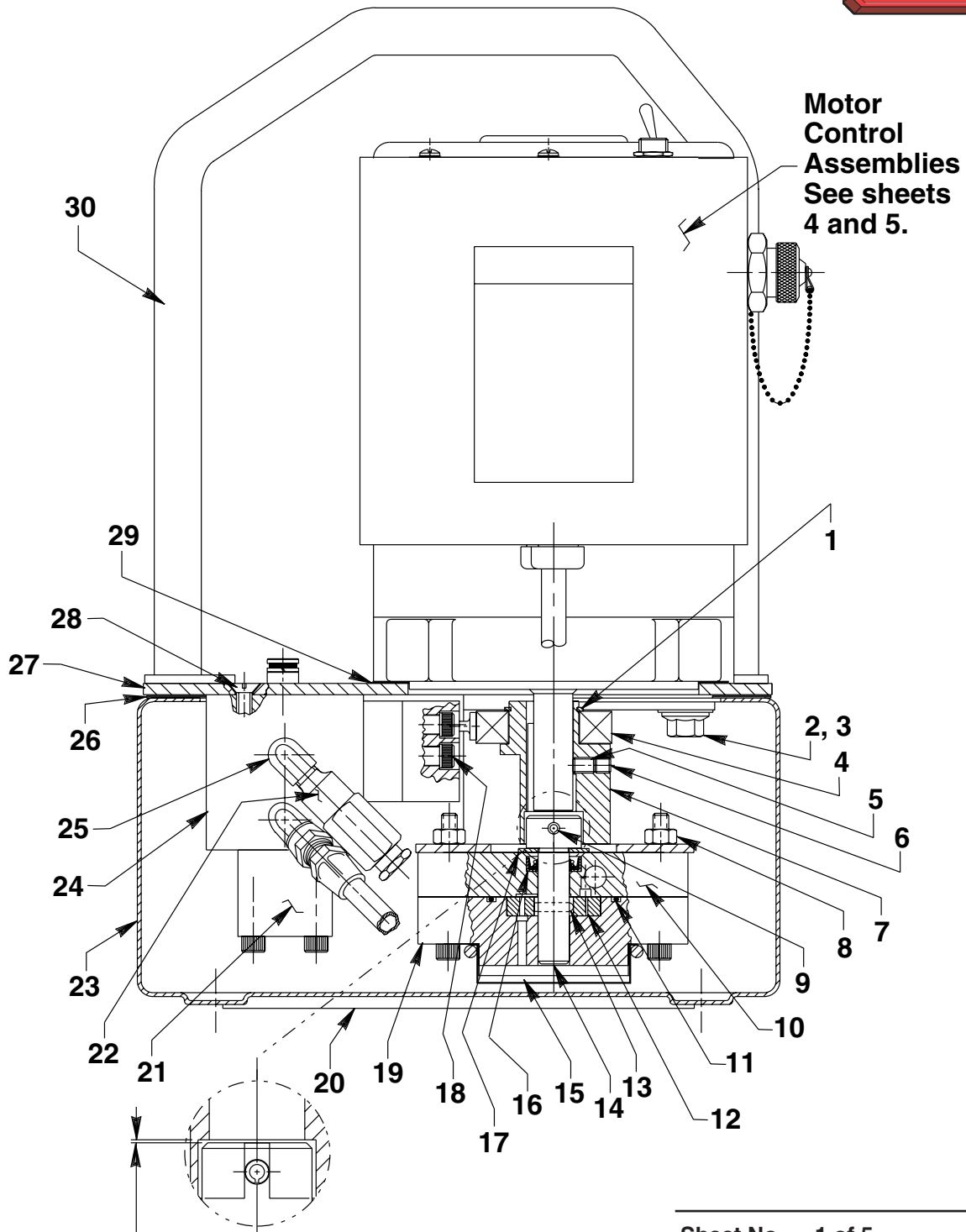


Parts List for:

PE304ML
PE304ML-220

ELECTRIC HYDRAULIC PUMP
Max. Capacity: 10,400 PSI

To Parts List



.001 Clearance Required
.010

Parts List, Form No. 101623, Back sheet 1 of 5

Item No.	Part No.	No. Req'd	Description
1	209798	1	Retaining Ring (1-3/16" Shaft)
2	213663	4	Cap Screw (3/8-16 UNC X 1" Lg.; Torque to 230/250 in. lbs.)
3	10258	4	Plain Washer (For 3/8 bolt)
4	209805	1	Ball Bearing
5	10136	1	Set Screw (1/4-20 UNC x 1/4 Lg.; Torque to 60/80 in. lbs.)
6	10519	1	Soc. Set Screw (1/4-20 UNC X 3/8 Lg.; Torque to 60/80 in. lbs.)
7	420840	1	Eccentric
8	10199	2	Hex Nut (1/4-20 UNC)
9	12298	1	Roll Pin (3/16 dia. x 1-1/2" Lg.)
10	64623	1	Upper Gerotor Housing
11	10922	1	O-ring (2-1/8" X 1-15/16" X 3/32)
12	304826	1	Gerotor
13	209794	1	Gerotor Drive Pin
14	350940	1	Gerotor Shaft
15	21846	1	Filter Support
16	304830	1	Oil Seal
17	12595	1	Washer (1-1/8" X 1/2 X .077 Thk.)
18	10022	4	Cap Screw (1/4-20 UNC X 1-1/2" Lg.; Torque to 180/200 in. lbs.)
19	64580	1	Gerotor Housing
20	420948	1	Rubber Pad
21	350930	1	Retaining Block
22	21278	1	Relief Valve Assembly
23	64665OR9	1	Reservoir
24	64612	1	Check Body
25	13229	1	Street Elbow
26	420931	1	Reservoir Gasket
27	64666BK2	1	Cover Plate
28	11529	2	Screw (1/4-20 UNC x 3/4 Lg.)
28	351060	1	Motor Base Gasket
30	64677BK2	1	Handle

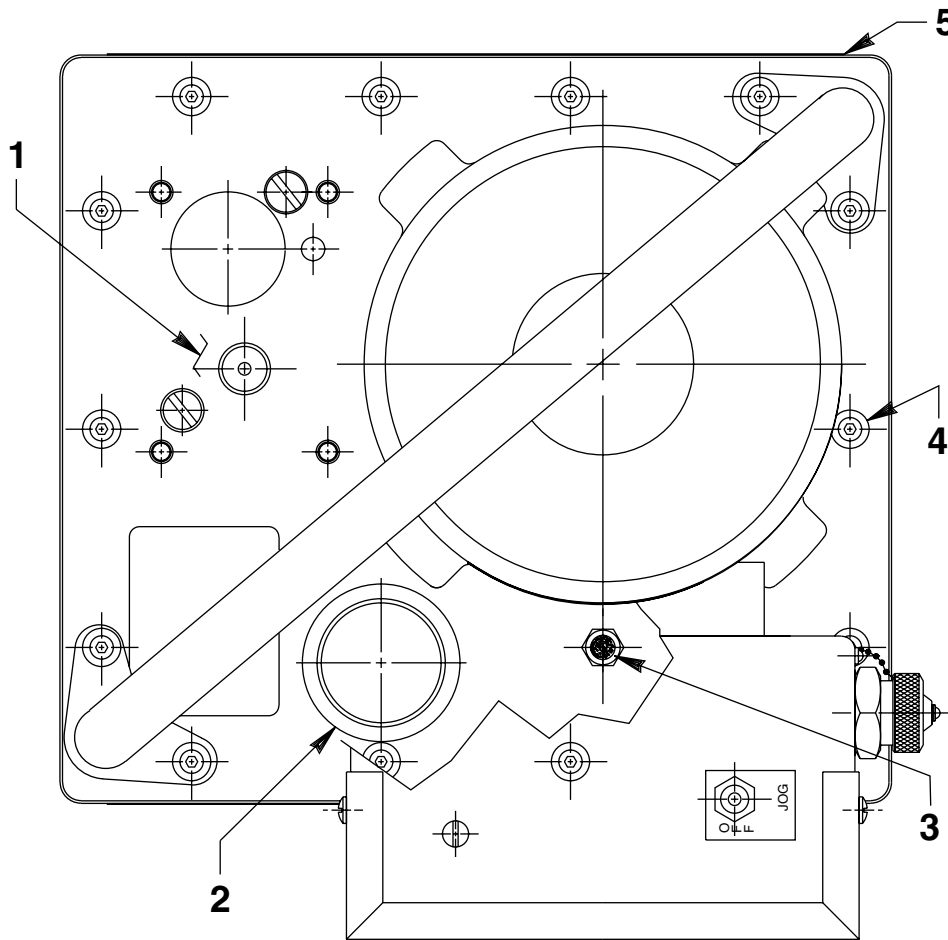


Refer to any operating instructions included with this product for detailed information about operation, testing, disassembly, reassembly, and preventive maintenance.

Items found in this parts list have been carefully tested and selected. **Therefore: Use only genuine Power Team replacement parts!**

Additional questions can be directed to our Technical Services Department.

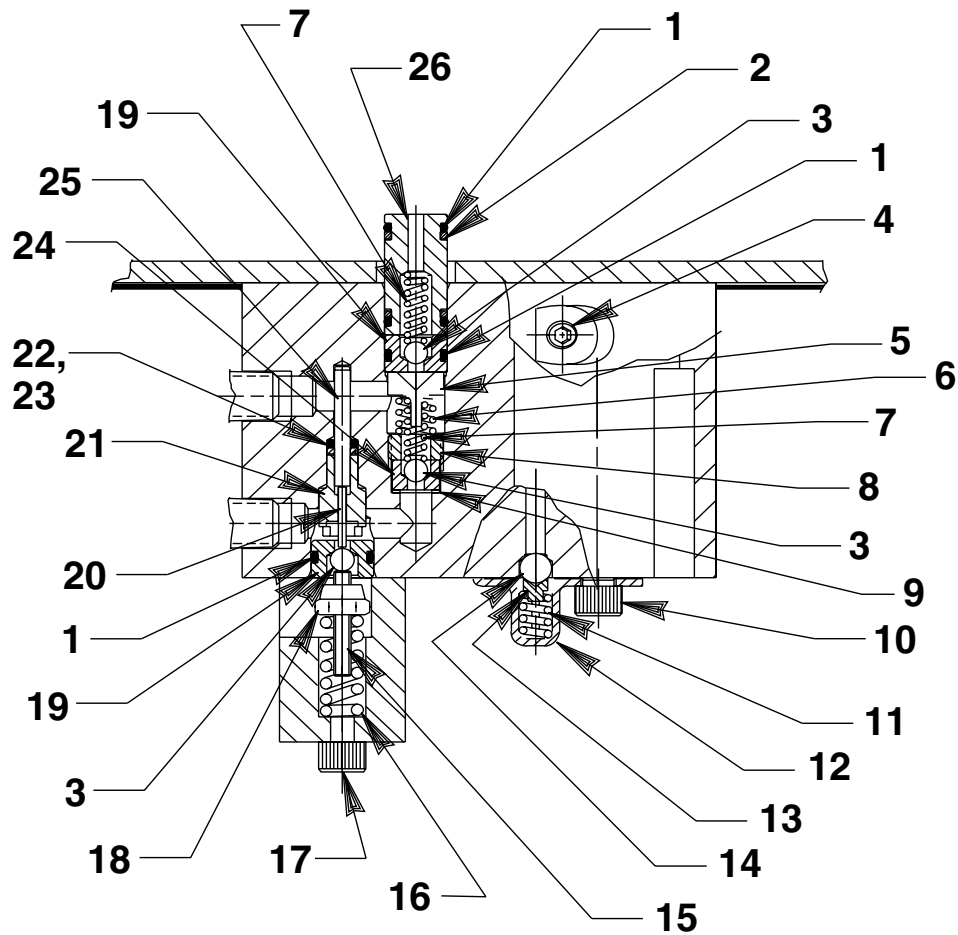
TOP VIEW



Item No.	Part No.	No. Req'd	Description
1	52510	1	Manual Valve (Replace 10854 screws with 12001 and return to stock. NOTE: apply loctite #242 to threads of valve handle stem (both ends). See form 100623.
2	350925	1	Filler Cap
3	251599	1	Breather Filter Vent
4	10177	14	Screw (1/4-20 X 3/4 Lg.; Torque to 60/80 in. lbs.)
5	309219	2	Decal

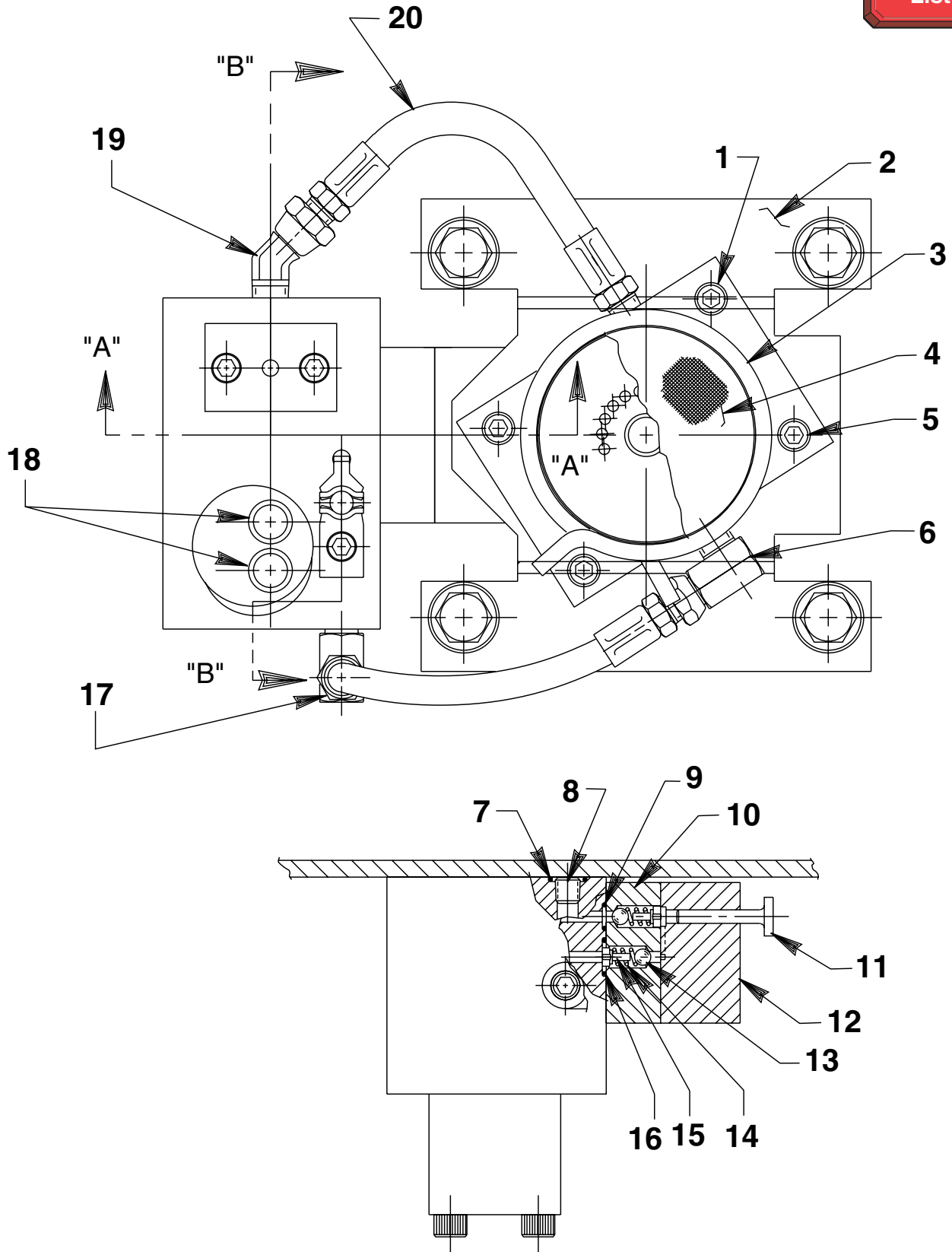
Note: Shaded areas reflect last revision(s) made to this form.

HIGH PRESSURE PUMP ASSEMBLY



Item No.	Part No.	No. Req'd	Description	Item No.	Part No.	No. Req'd	Description
1	10268	4	O-ring (1/2 X 3/8 X 1/16)	12	350577	1	Spring Retainer
2	11863	2	Backup Washer (1/2 X 3/8 X 1/16)	13	200796	1	Adapter
3	12223	4	Ball (3/16 Dia.)	14	10374	1	Steel Ball (7/32 Dia.)
4	15130	1	Plug (1/16 NPTF)	15	251067	1	Set Screw (Unloading valve; #10-24 UNC x 1" Lg.)
5	251601	1	Outlet Ball Stop	16	14484	1	Compression Spring (3/8 O.D. X 1" Lg.)
6	10444	1	Compression Spring (3/16 I.D. X 13/32 Lg.)	17	10854	2	Cap Screw (1/4-20 UNC X 1-3/4" Lg.; Torque to 60/80 in. lbs.)
7	10445	1	Compression Spring (5/32 O.D. X 3/4 Lg.)	18	207405	1	Locknut (10-24 UNC)
8	209797	1	Hollow Lock Screw (7/16-20 UNF-3A; Torque to 110/130 in. lbs.)	19	251065	2	Replaceable Seat
9	10442	1	Washer (3/8 X 1/4 X 1/32)	20	251611	1	Dowel Pin (5/8 X 1/2 Lg.)
10	10002	1	Cap Screw (1/4-20 UNC X 3/8 Lg.; Torque to 60/80 in. lbs.)	21	251068	1	Guide
11	15691	1	Compression Spring (1/4 O.D. X 5/8 Lg.)	22	17797	1	O-ring (1/4 X 1/8 X 1/16)
				23	214992	1	Backup Ring (15/64 x 1/8 x 3/64)
				24	209787	1	Replaceable Seat
				25	16471	1	Dowel Pin (1/8 dia. x 1" Lg.)
				26	251581	1	Bushing

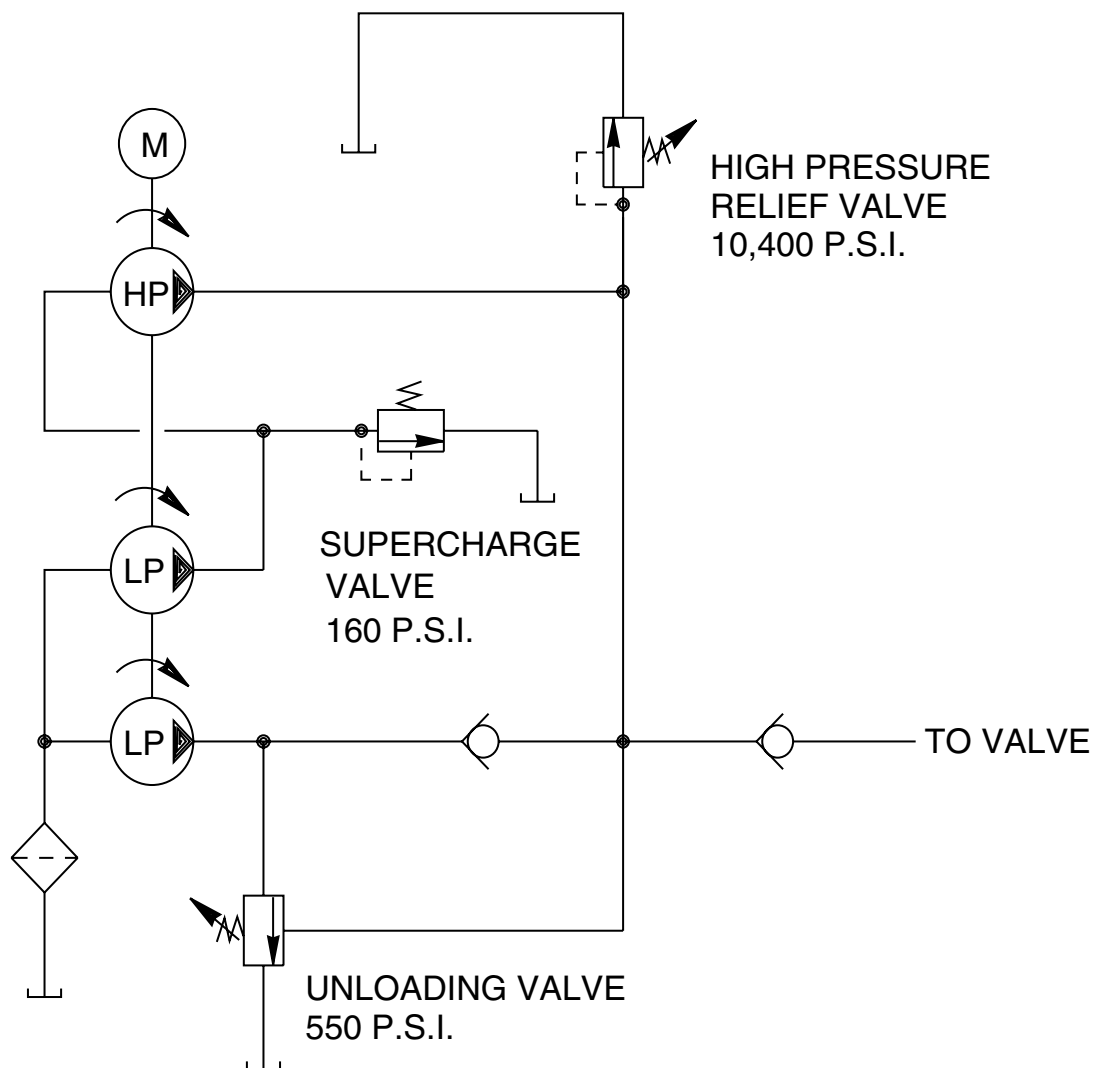
BOTTOM VIEW AND SECTION A-A



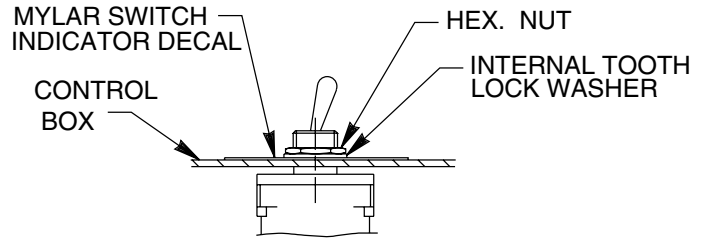
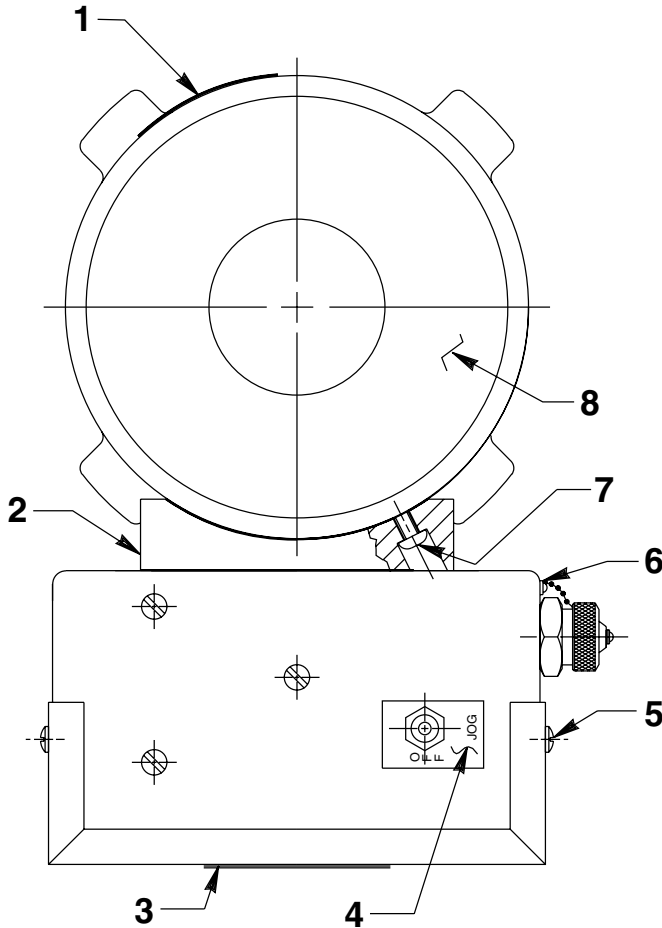
Item No.	Part No.	No. Req'd	Description	Item No.	Part No.	No. Req'd	Description
1	10022	2	Cap Screw (1/4-20 UNC X 1-1/2" Lg.; Torque to 60/80 in. lbs.)	11	305526	1	High Pressure Piston
2	58481	1	Gerotor Housing Bracket	12	45866	1	Block
3	11461	1	Hose Clamp	13	12223	1	Ball (3/16 Dia.)
4	21608	1	Filter	14	10445	2	Compression Spring (5/32 O.D. X 3/4 Lg.)
5	10890	2	Cap Screw (1/4-20 UNC X 2" Lg.; Torque to 60/80 in. lbs.)	15	24549	2	Ball Guide
6	14440	1	90° Elbow Fitting	16	14763	1	O-ring (7/16 X 5/16 X 1/16)
7	15279	1	O-ring (1/2 X 3/8 X 1/16)	17	13229	1	Elbow
8	15130	1	Plug (1/16 NPTF)	18	250630	1	Drain Tube
9	10265	1	O-ring (5/16 X 3/16 X 1/16)	19	251800	1	Elbow Fitting
10	45559	1	Block	20	304819	2	Hose Assembly



HYDRAULIC SCHEMATIC



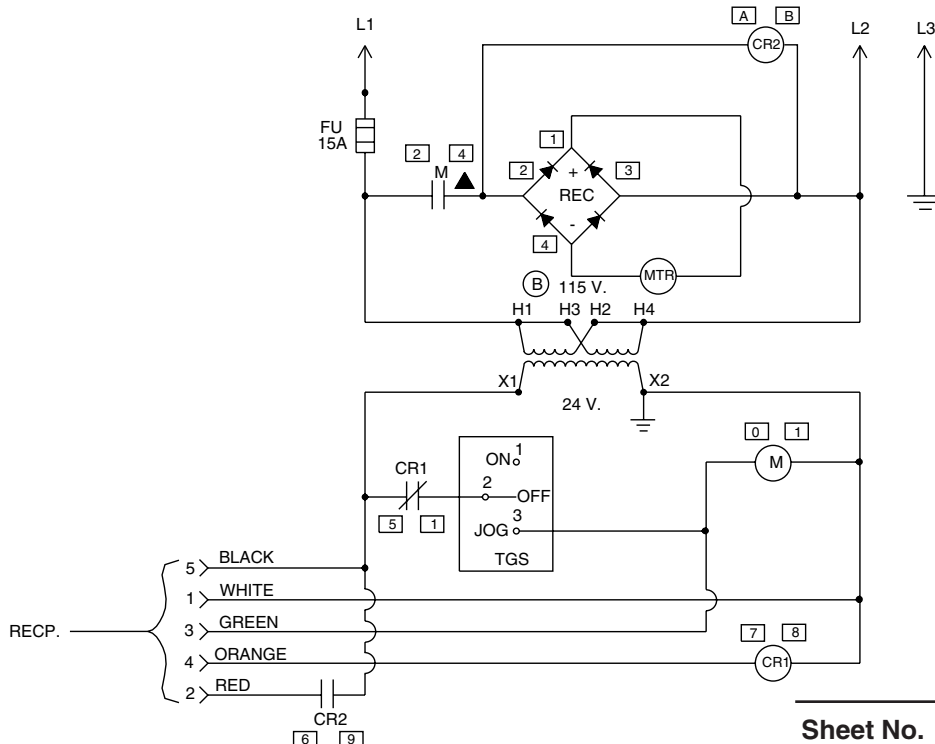
MOTOR CONTROL ASSEMBLY FOR PE304ML



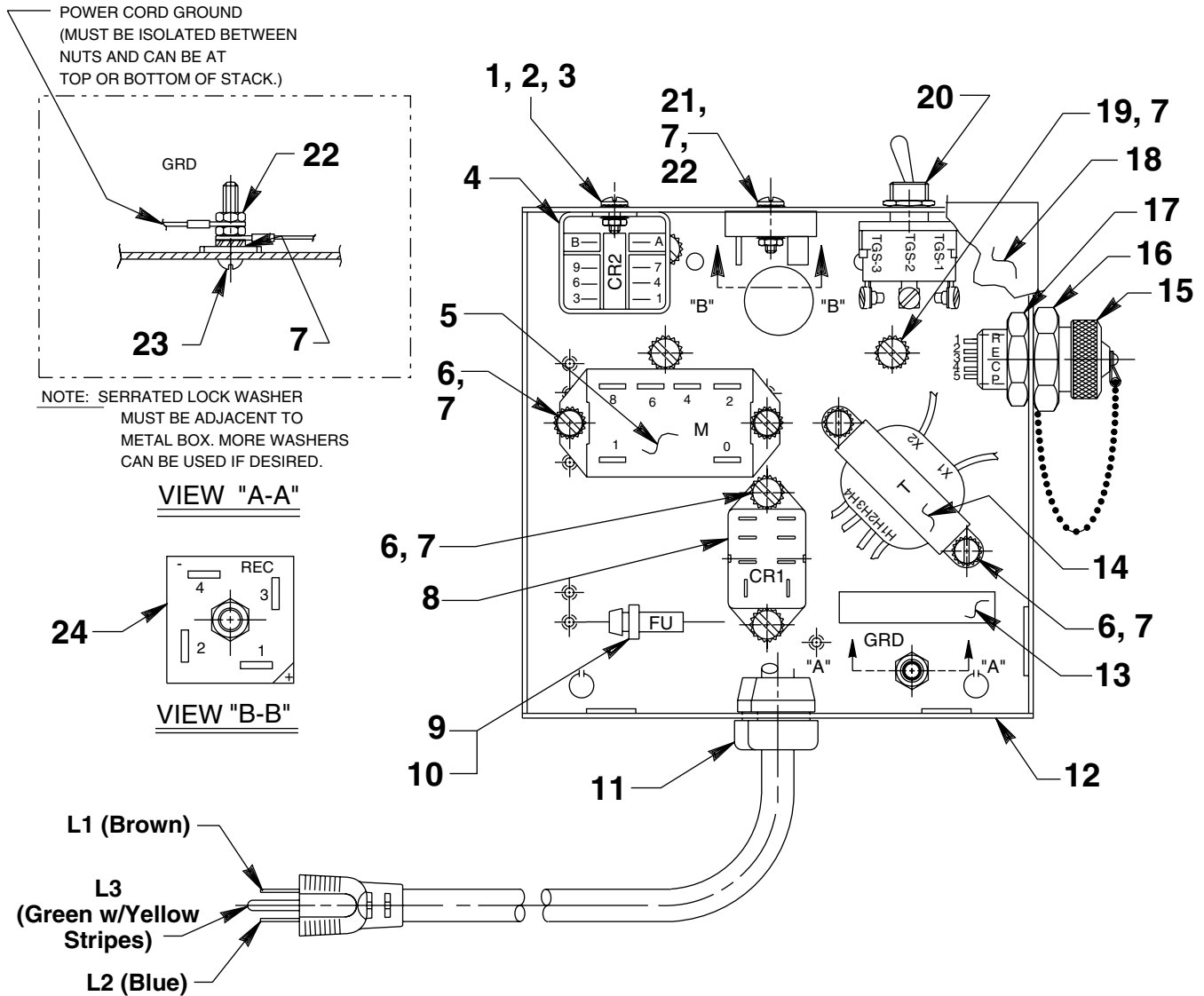
Item No.	Part No.	No. Req'd	Description
1	351024	1	Decal
2	420962	1	Mounting Adapter
3	200188	1	Decal
4	25926	1	Decal
5	11141	4	Tap Screw (#6-20 X 3/8 Lg.)
6	13027	1	Pop Rivet
7	12316	2	Screw (10-24 x 1/2" Lg.)
8	*420838BK2	1	Electric Motor (115 V.)

* NOTE: For replacement brushes, order (2) #252958.

ELECTRIC SCHEMATIC 110/115 V., 50/60 Hz.



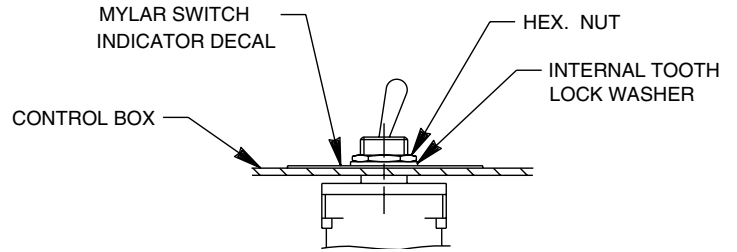
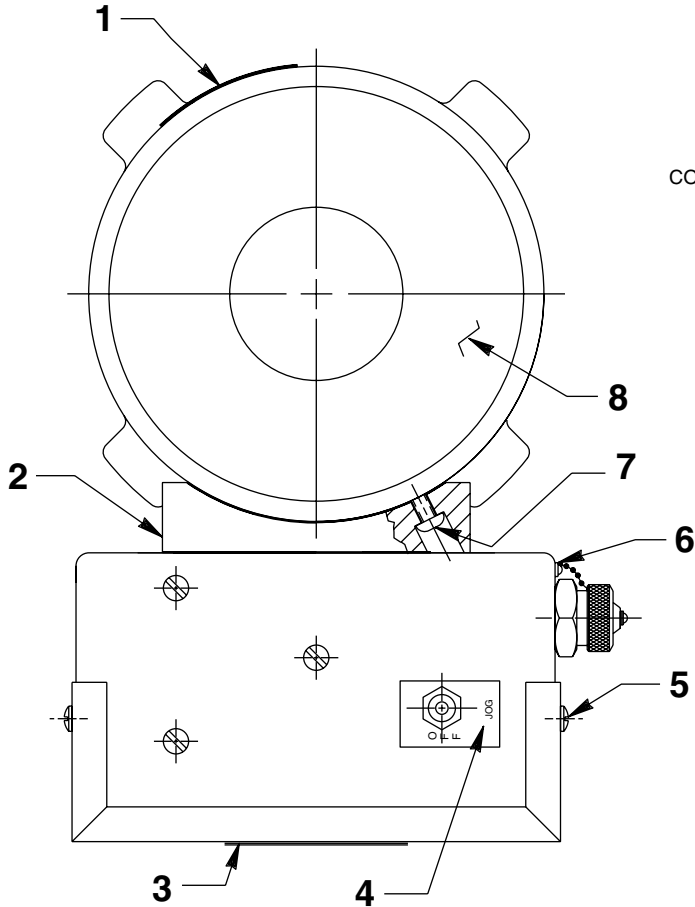
MOTOR CONTROL ASSEMBLY FOR PE304ML CONT.



Item No.	Part No.	No. Req'd	Description
1	10159	1	Machine Screw (#6-32 UNC X 5/16 Lg.)
2	10195	1	Nut (#6-32 UNC)
3	15906	1	Lockwasher (#6 External Tooth)
4	18842	1	Relay
5	251638	1	General Purpose Relay
6	10164	6	Screw (#10-24 UNC X 3/8 Lg.)
7	11108	12	Lockwasher (#10 External Tooth)
8	251046	1	Relay
9	16887	1	Fuse Holder
10	252288	1	Fuse (15 Amp.)
11	210112	1	Strain Relief Bushing
12	421131BK2	1	Electrical Control Box
13	205189	1	Ground Decal

Item No.	Part No.	No. Req'd	Description
14	11852	1	Transformer
15	251820	1	Dust Cap
16	251823	1	Molded Connector
17	11362	1	Conduit Locknut
18	43126BK2	1	Control Box Cover
19	12909	4	Machine Screw (10-32 UNF X 1/4 Lg.)
20	12175	1	On/Off Switch (See Detail)
21	10167	1	Machine Screw (#10-24 UNC X 3/4 Lg.)
22	10197	3	Nut (#10-24 UNC)
23	11856	1	Machine Screw (#10-24 X 1" Lg.)
24	251050	1	Rectifier

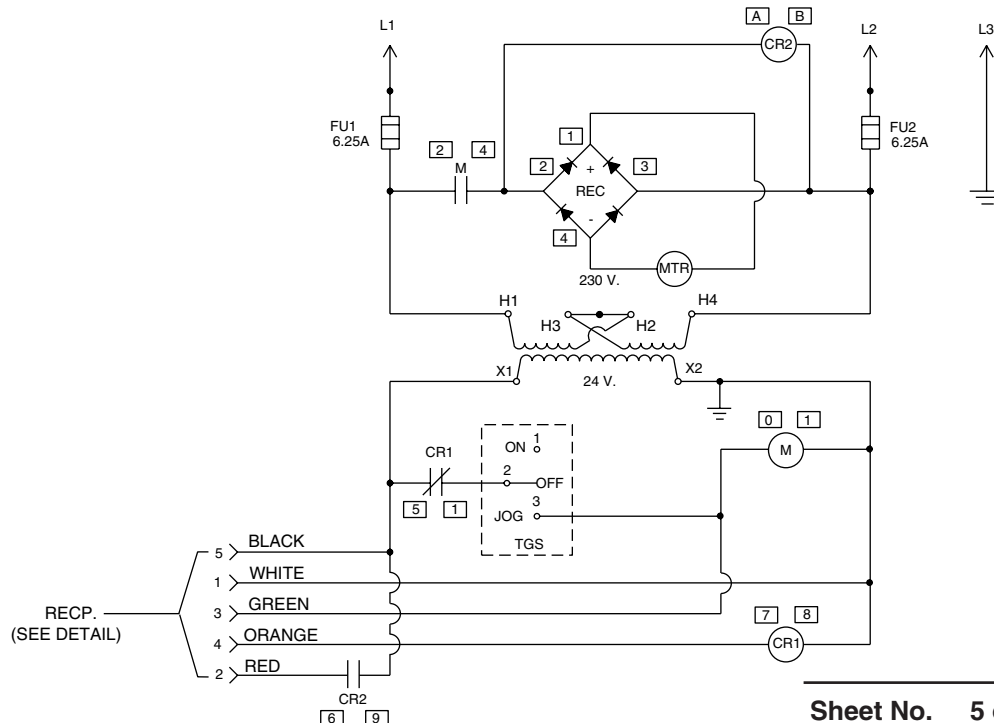
MOTOR CONTROL ASSEMBLY FOR PE304ML-220



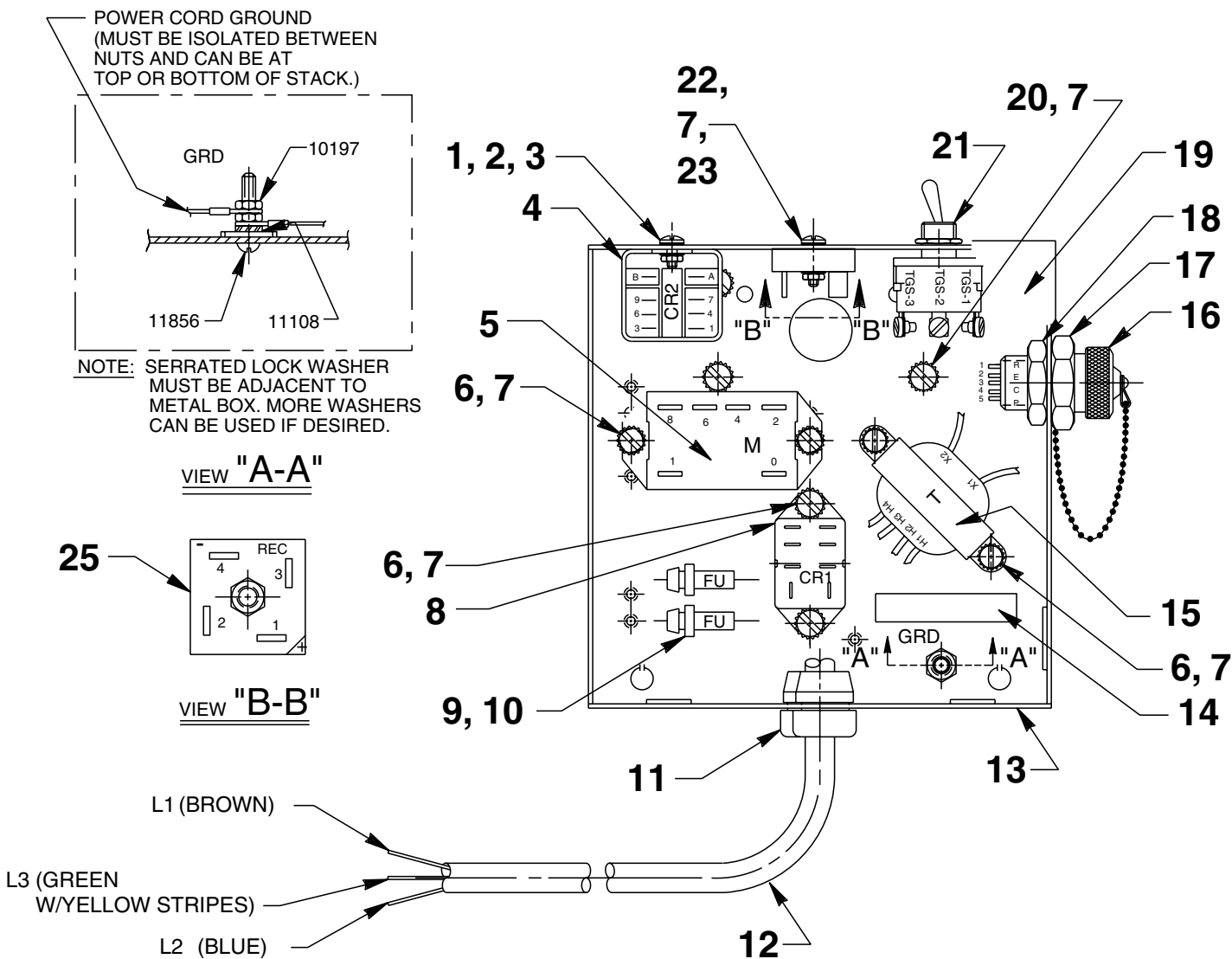
Item No.	Part No.	No. Req'd	Description
1	351024	1	Decal
2	420962	1	Mounting Adapter
3	200188	1	Decal
4	25926	1	Decal
5	11141	4	Tap Screw (#6-20 X 3/8 Lg.)
6	13027	1	Pop Rivet
7	12316	2	Screw (10-24 x 1/2" Lg.)
8	*420839BK2	1	Electric Motor (220 V.)

* NOTE: For replacement brushes, order (2) #252961.

ELECTRIC SCHEMATIC 220/230V., 50/60 Hz.



MOTOR CONTROL ASSEMBLY FOR PE304ML-220 CONT.



Item No.	Part No.	No. Req'd	Description
1	10159	1	Machine Screw (#6-32 UNC X 5/16 Lg.)
2	10195	1	Nut (#6-32 UNC)
3	15906	1	Lockwasher (#6 External Tooth)
4	39520	1	Relay
5	251638	1	General Purpose Relay
6	10164	6	Screw (#10-24 UNC X 3/8 Lg.)
7	11108	12	Lockwasher (#10 External Tooth)
8	251046	1	Relay
9	16887	1	Fuse Holder
10	250176	1	Fuse (12 Amp.)
11	210112	1	Strain Relief Bushing
12	308752	1	Cord Set (14/3 SJTO)
13	421131BK2	1	Electrical Control Box
14	205189	1	Ground Decal

Item No.	Part No.	No. Req'd	Description
15	11852	1	Transformer
16	251820	1	Dust Cap
17	251823	1	Molded Connector
18	11362	1	Conduit Locknut
19	43126BK2	1	Control Box Cover
20	12909	4	Machine Screw (10-32 UNF X 1/4 Lg.)
21	12175	1	On/Off Switch (See Detail)
22	10167	1	Machine Screw (#10-24 UNC X 3/4 Lg.)
23	10197	3	Nut (#10-24 UNC)
24	11856	1	Machine Screw (#10-24 X 1" Lg.)
25	251050	1	Rectifier