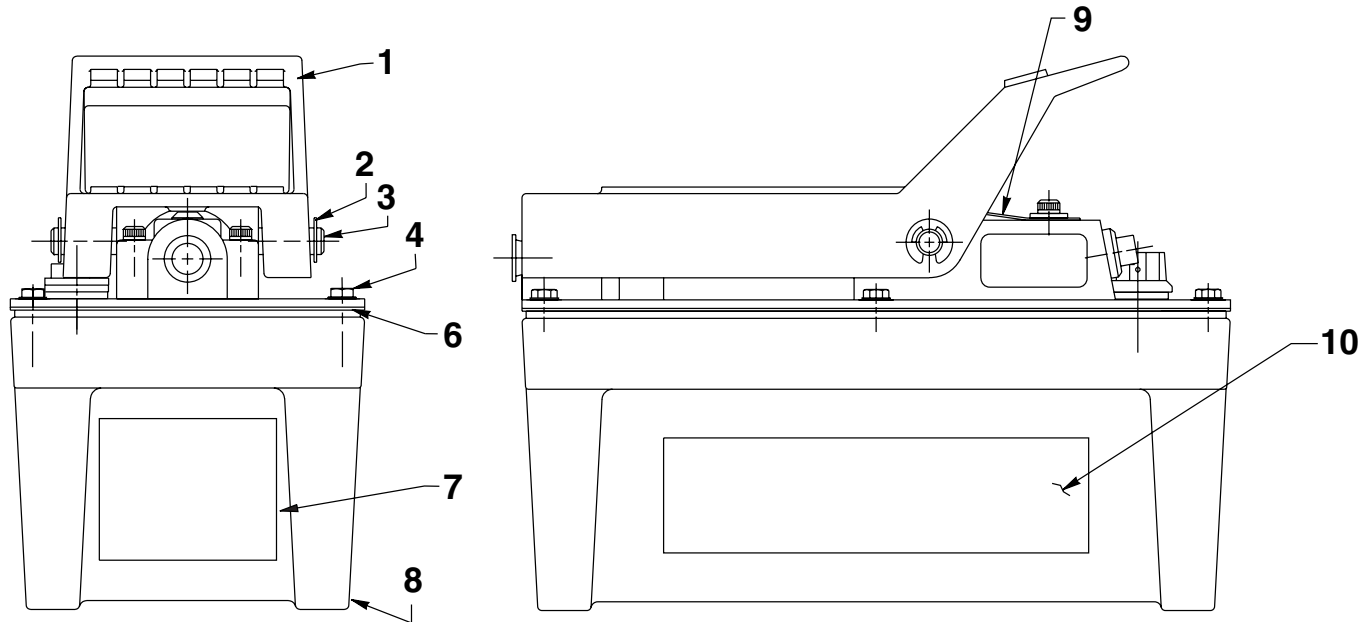


MODEL F
AIR HYDRAULIC PUMP
Max. Capacity: 10,000 PSI

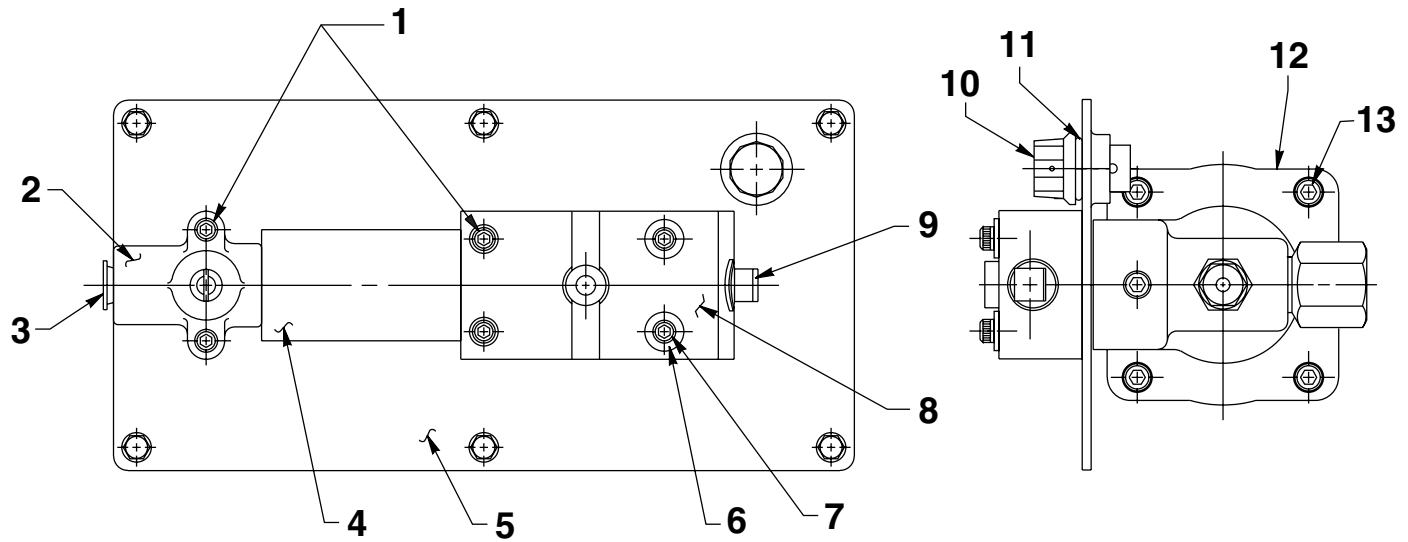


Item No.	Part No.	No. Req'd	Description
1	41322	1	Foot Pedal
2	*11032	2	Retaining Ring
3	28386	1	Pin
4	211060	6	Screw (#9-15 X 1" Lg.; Torque to 25/35 in. lbs.)
6	*33853	1	Reservoir Gasket
7	*305494	1	Decal
8	61243	1	Reservoir
9	302466	1	Spring Clip (On 6-0024 pumps: Adjust so clip does not function.)

Item No.	Part No.	No. Req'd	Description
10	350643	2	Trade Name Decal (For 58356 & 6-0024)
PARTS INCLUDED BUT NOT SHOWN			
	211060	4	Screw (#9-15 X 1" Lg.; For mounting purposes only.)
	36886	1	Hose (6' polyurethane; For PA6-SMITH)
	25599	1	Hose Half Coupler (For PA6-SMITH)
	9800	1	Dust Cap (For PA6-SMITH)

Part numbers marked with an asterisk (*) are contained in Repair Kit No. 300836.

TOP AND END VIEWS



Item No.	Part No.	No. Req'd	Description
1	11151	4	Cap Screw (10-24 UNC X 1-1/4" Lg.; Torque to 50/60 in. lbs.)
2	37199	1	Intake Air Valve Body
3	14794	1	Plastic Cap
4	*29992	1	Foam Tube
5	420965BK2	1	Cover Plate
6	11089	2	Washer (No. 10)
7	11435	2	Soc. Hd. Cap Screw (10-24 UNC X 1-3/4" Lg.; Torque to 50/60 in. lbs.)
8	58579	1	Release Valve
9	11127	1	Pressure Plug (For 58356 & 6-0024)
10	251689	1	Breather/Filler Cap
11	*10273	2	O-ring (13/16 X 5/8 X 3/32)
12	64767	1	Pump Body
13	17428	4	Soc. Hd. Cap Screw (1/4-20 UNC X 3-1/2" Lg.; Torque to 85/95 in. lbs. oiled. Note: Cross torque in increments of 30 in. lbs.)

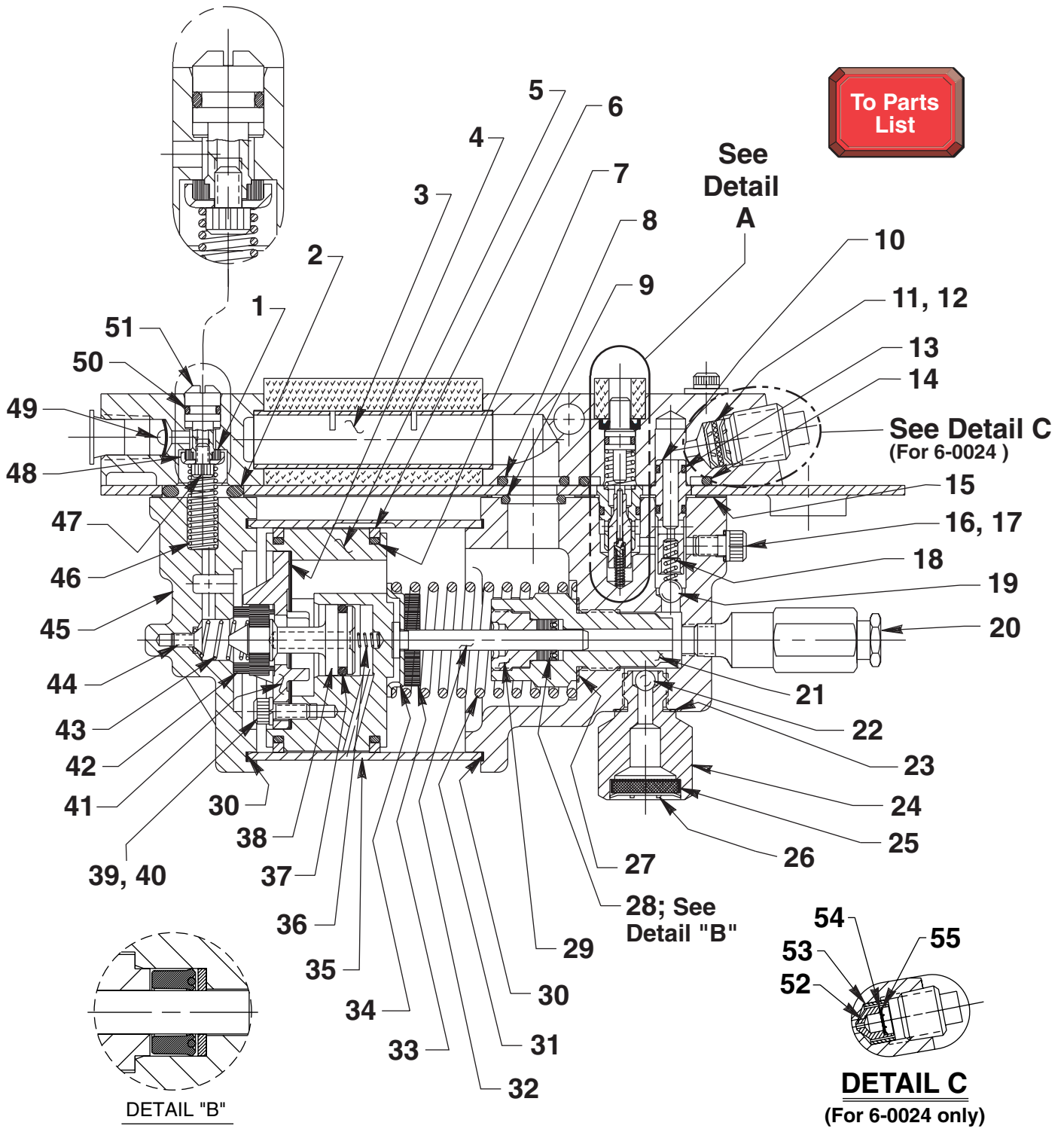
Part numbers marked with an asterisk (*) are contained in Repair Kit No. 300836.

Refer to any operating instructions included with this product for detailed information about operation, testing, disassembly, reassembly, and preventive maintenance.

Items found in this parts list have been carefully tested and selected. **Therefore: Use only genuine Power Team replacement parts!**

Additional questions can be directed to our Technical Services Department.

BASIC PUMP ASSEMBLY



Parts List, Form No. 101628, Back sheet 2 of 3

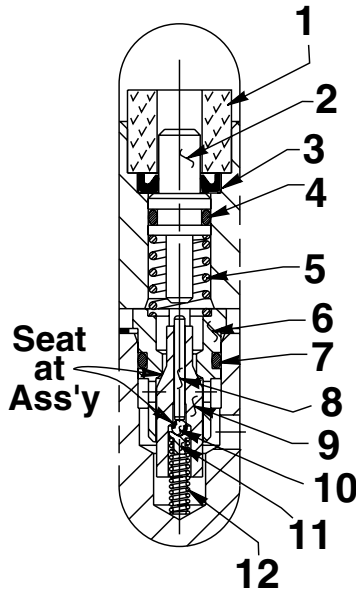
Item No.	Part No.	No. Req'd	Description	Item No.	Part No.	No. Req'd	Description
1	*28182	1	Air Valve Poppet	28	*304295	1	Retainer (Note: See "INSTRUCTIONS FOR RETAINER REPLACEMENT" on sheet 3 of 3.)
2	*251717	1	O-ring (1" X 5/8 X 3/16)	30	*17429	2	Backup Washer (2-15/16" X 2-3/4" X .045)
3	28387	1	Muffler	31	*13938	1	Compression Spring (1.452 O.D. X 4-7/16" Lg.)
4	*28239	1	Gasket	32	28226	1	Piston
5	52390	1	Piston Body	33	203143	1	Bumper
6	*14265	2	Piston Ring	34	210994	1	Spring Guide
7	*251835	2	O-ring (2-1/2" X 2-5/16" X 3/32)	35	37434	1	Air Cylinder (Note: Locate groove on upper half (top) of pump with chamfered tube end towards rear head as shown.)
8	*10276	1	O-ring (1" X 3/4 X 1/8)	36	*12692	1	Compression Spring (3/16 O.D. X 1-11/16" Lg.)
9	*10272	1	O-ring (3/4 X 9/16 X 3/32)	37	*211052	1	O-ring (.900 X .706 X .097)
10	34378	1	Check Valve Body	38	305475	1	Exhaust Valve Stem
11	*250638	1	Filter Disc	39	*10241	3	Lockwasher (For #10 bolt)
12	*11088	2	Retaining Ring	40	211054	3	Screw (#10-24 X 1/2 Lg.; Torque to 50/55 in. lbs.)
13	*12522	2	O-ring (3/8 X 1/4 X 1/16; Urethane)	41	33822	1	Piston End Plate
14	*11841	1	O-ring (1-5/8" X 1-3/8" X 1/8)	42	*28183	1	Piston Poppet
15	*351021	1	Gasket	43	205679	1	Compression Spring (.485 O.D. X .915 Lg.)
16	*10442	1	Washer (3/8 X 1/4 X 1/32)	44	*205674	1	Screw (8-32 UNC X 3/8 Lg.; Torque to 12/18 in. lbs.)
17	10002	1	Cap Screw (1/4-20 UNC X 3/8 Lg.; Torque to 90/110 in. lbs.)	45	51480	1	Rear Head
18	*10445	1	Compression Spring (5/32 O.D. X 3/4 Lg.)	46	12691	1	Compression Spring (3/8 O.D. X 1-1/2" Lg.)
19	*10423	1	Steel Ball (9/32 Dia.)	47	13936	1	Soc. Hd. Cap Screw (8-32 UNC X 1/4 Lg.)
20	21278	1	Relief Valve Ass'y (For 58356 & PA6-SMITH; Set at 10,100 /10,700 PSI. Apply loctite 592 [Power Team #905516] or equiv. & torque to 150/170 in. lbs.)	48	28198	1	Seal Guide
	21278-28	1	Relief Valve Ass'y (For 6-0024; Set at 2,700 /3,000 PSI. Apply loctite 592 [Power Team #905516] or equiv. & torque to 150/170 in. lbs.)	49	*216296	1	Filter Disc
21	45278	1	Piston Cylinder (Torque to 90/100 ft. lbs. oiled.)	50	*10267	1	O-ring (7/16 X 5/16 X 1/16)
22	*10375	1	Steel Ball (1/4 Dia.)	51	33841	1	Actuator Button
23	*10261	1	Copper Washer (3/4 X 19/32 X 1/32)	52	252191	1	Poppet
24	308893	1	Filter Adapter (Torque to 40/50 ft. lbs. oiled.)	53	214583	1	Retaining Ring
25	214578	1	Filter	54	214596	1	Filter Disc
26	214586	1	Retaining Ring (Internal)	55	12201	1	Retaining Ring (Int. 0.18 x .010)
27	*10263	1	Copper Washer (1" X .765 X 1/32)				
28	*13934	1	U-cup & Backup				

Part numbers marked with an asterisk (*) are contained in Repair Kit No. 300836.



Note: Shaded areas reflect last revision(s) made to this form.

DETAIL "A"



Item No.	Part No.	No. Req'd	Description
1	*206504	1	Foam Tube
2	28227	1	Release Valve Button
3	*15620	1	Shaft Seal
4	*10266	1	O-ring (3/8 X 1/4 X 1/16; Nitrile)
5	*251297	1	Compression Spring (3/8 O.D. X 1/2 Lg.)
6	†34377	1	Poppet Retainer
7	†*15279	1	O-ring (1/2 X 3/8 X 1/16)
8	†13937	1	Dowel Pin (Note: Place tapered end toward ball.)
9	†29037	1	Release Valve Poppet
10	†*14443	1	Steel Ball (3/32 Dia.)
11	†209736	1	Ball Retainer
12	†*13959	1	Compression Spring (1/8 O.D. x 1/2 Lg.)

Part numbers marked with an asterisk (*) are contained in Repair Kit No. 300836.

Part numbers marked with a dagger (†) are contained in Release Valve Repair Kit No. 200383.

INSTRUCTIONS FOR RETAINER REPLACEMENT

Your pump's retainer is locked into place by one of the two following methods. Determine which method was used on your pump's retainer, then follow the appropriate steps to remove the old and install and stake the new.

Method 1 - Retainer shows no sign of stake marks

1. This retainer has been locked in place with a Loctite product. To replace it, a moderate amount of heat needs to be applied to the cylinder nut (in the area of the retainer) to soften the existing Loctite allowing it to be removed.
2. Install the new retainer into the cylinder nut and torque to 80/100 in. lbs. **Note: Do not use a Loctite product this time but stake the new retainer in place according to instructions in Step 3.**
3. To lock retainer into place, use a center punch positioned in the seam between the retainer and the cylinder nut and stake the new retainer in two places approximately 180° apart.

Method 2 - Retainer has two stake marks in the seam between the retainer and the cylinder nut

1. For replacement of this retainer, the stake marks must be removed. Using a 1/8" or larger diameter drill bit, remove the existing stakes by drilling a short distance into the stake marks. Remove the retainer.
2. Install the new retainer into the cylinder nut and torque to 80/100 in. lbs.
3. To lock retainer into place, use a center punch positioned in the seam between the retainer and the cylinder nut and stake the new retainer in two places approximately 180° apart.

NOTE: Do not stake in the old stake marks.

