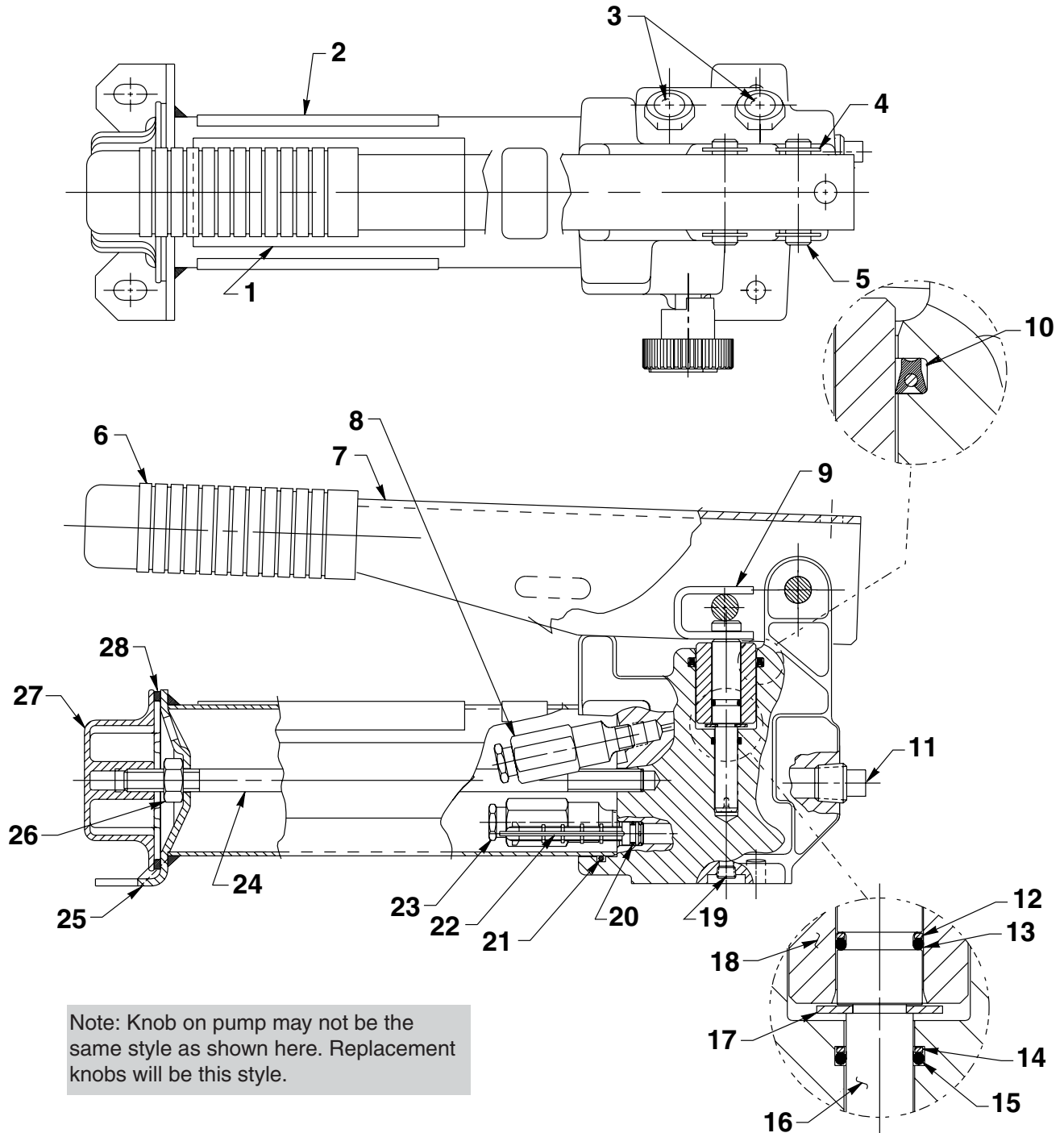


## TWO-SPEED HYDRAULIC HAND PUMP

Max. Capacity: 10,000 PSI (700 Bar)



Note: Knob on pump may not be the same style as shown here. Replacement knobs will be this style.

Note: Shaded areas reflect last revision(s) made to this form.

Sheet No. 1 of 2

Issue Date: Rev. 7-5-96

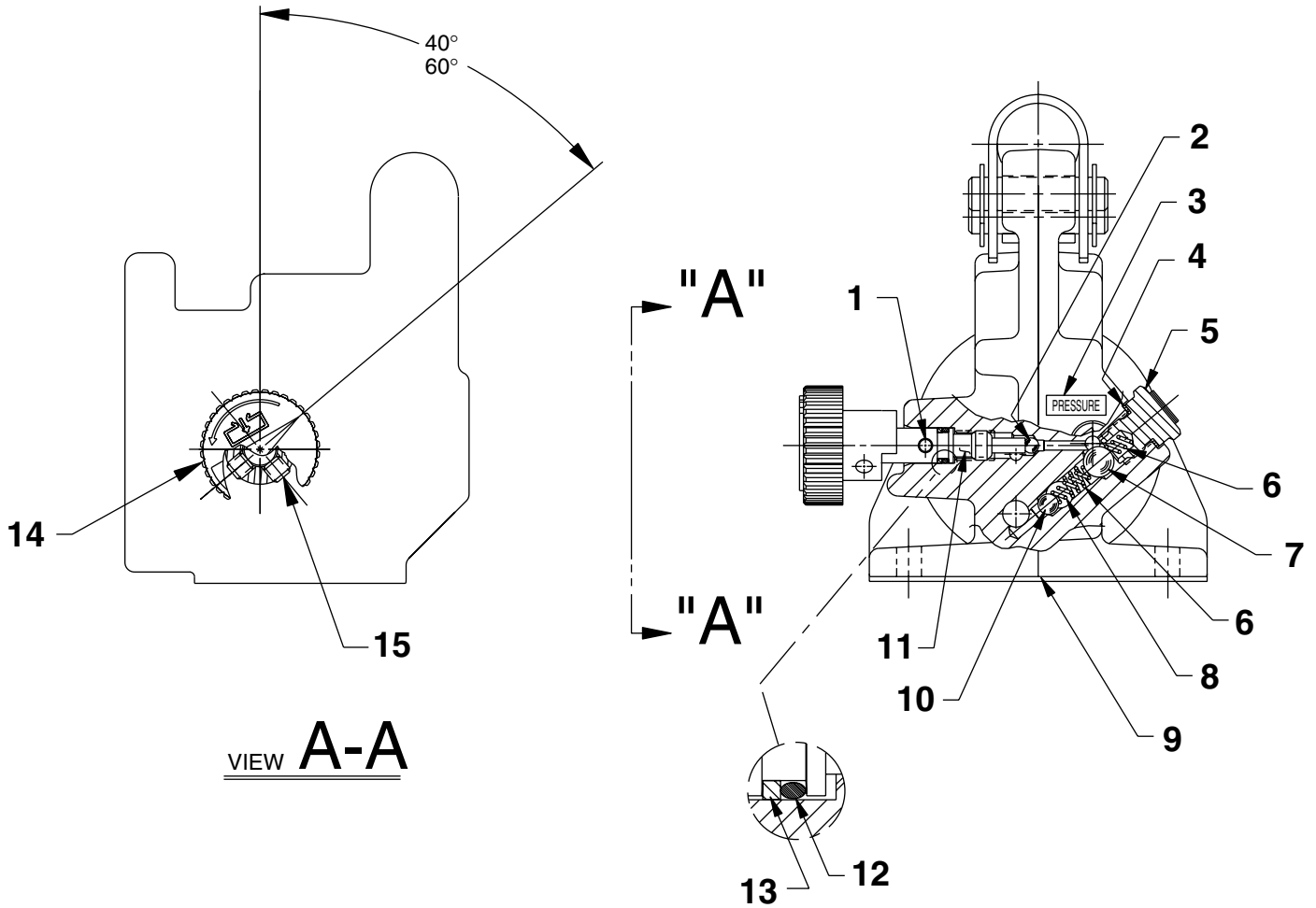
# Parts List, Form No. 101643, Back sheet 1 of 2

Item No.	Part No.	No. Req'd	Description
1	305977	1	Warning Decal
2	202173	2	Trade Name Decal
3	215907	2	Decal
4	211743	4	Retaining Ring (NOTE: Expand the retaining ring to .440 dia. max. during installation)
5	211742	2	Dowel Pin
6	211769	1	Handle Grip
7	469530R9	1	Handle
8	48011-2	1	Relief Valve Assembly
9	211470	1	Piston Clip
10	250233	1	U-cup Packing
11	11127	1	Pressure Plug (3/8 NPTF)
12	11863	1	Backup Washer (1/2 X 3/8 X 1/16, -012)
13	10268	1	O-ring (1/2 X 3/8 X 1/16, -012)
14	250611	1	O-ring Backup Washer (1/2 x 3/8 x .049, -012; Assemble with concave surface towards O-ring)
15	15279	1	O-ring (1/2 X 3/8 X 1/16, -012)
16	420273	1	High Pressure Piston
17	11032	1	Retaining Ring
18	350085	1	Low Pressure Piston (Assemble with 20° inner chamfer down as shown.)
19	11084	1	Plug (1/16 NPTF; Apply Loctite and assemble below bottom surface of pump body.)
20	12557	1	O-ring (11/32 X 7/32 X 1/16, -009)
21	211495	1	O-ring (2-11/16 X 2-1/2 X 3/32, -144)
22	215075	1	Filter
23	21278	1	Relief Valve Assembly
24	214079	1	Tie Rod (NOTE: Screw in tie rod until it bottoms out in pump body.)
25	47846	1	Reservoir Assembly
26	10204	1	Hex Nut (3/8-16 UNC; Torque to 150/170 in. lbs.)
27	52711	1	Reservoir Cap (Torque to 50/60 in. lbs.)
28	212739	1	Fill Cap Gasket (3" X 2-5/8 X 1/8)



Note: Shaded areas reflect last revision(s) made to this form.

END VIEW



VIEW **A-A**

Item No.	Part No.	No. Req'd	Description
1	15528	1	Ball (3/16 dia.; Push in nylon ball until it bottoms out in hole. Permissible to flatten ball during installation)
2	12223	1	Ball (3/16 Dia.)
3	215301	1	Pressure Decal
4	14874	2	Soft Copper Washer (.700 X 1/2 X 1/32)
5	305975	2	Valve Screw (Torque to 350/370 in. lbs.)
6	10444	4	Compression Spring (3/16 I.D. X 13/32 Lg.)
7	10378	2	Steel Ball (3/8 Dia.)
8	211797	2	Compression Spring (5/32 O.D. X 5/8 Lg.)
9	64167	1	Pump Body
10	10375	2	Steel Ball
11	350185	1	Release Valve Screw
12	10267	1	O-ring (7/16 X 5/16 X 1/16, -011)
13	15085	1	Backup Ring (7/16 X 5/16 X 3/64 Thk., -011)
14	351087	1	Release Valve Knob (NOTE: Screw in valve stem until seated [bottomed out]. Then position knob as shown approx. 1/16" from casting surface. Lock in place with set screw.)
15	10556	2	Soc. Set Screw (1/4-20 UNC X 1/4 Lg.; Torque to 50/70 in. lbs.)

Note: Shaded areas reflect last revision(s) made to this form.

Sheet No. 2 of 2

Issue Date: Rev. 7-5-96