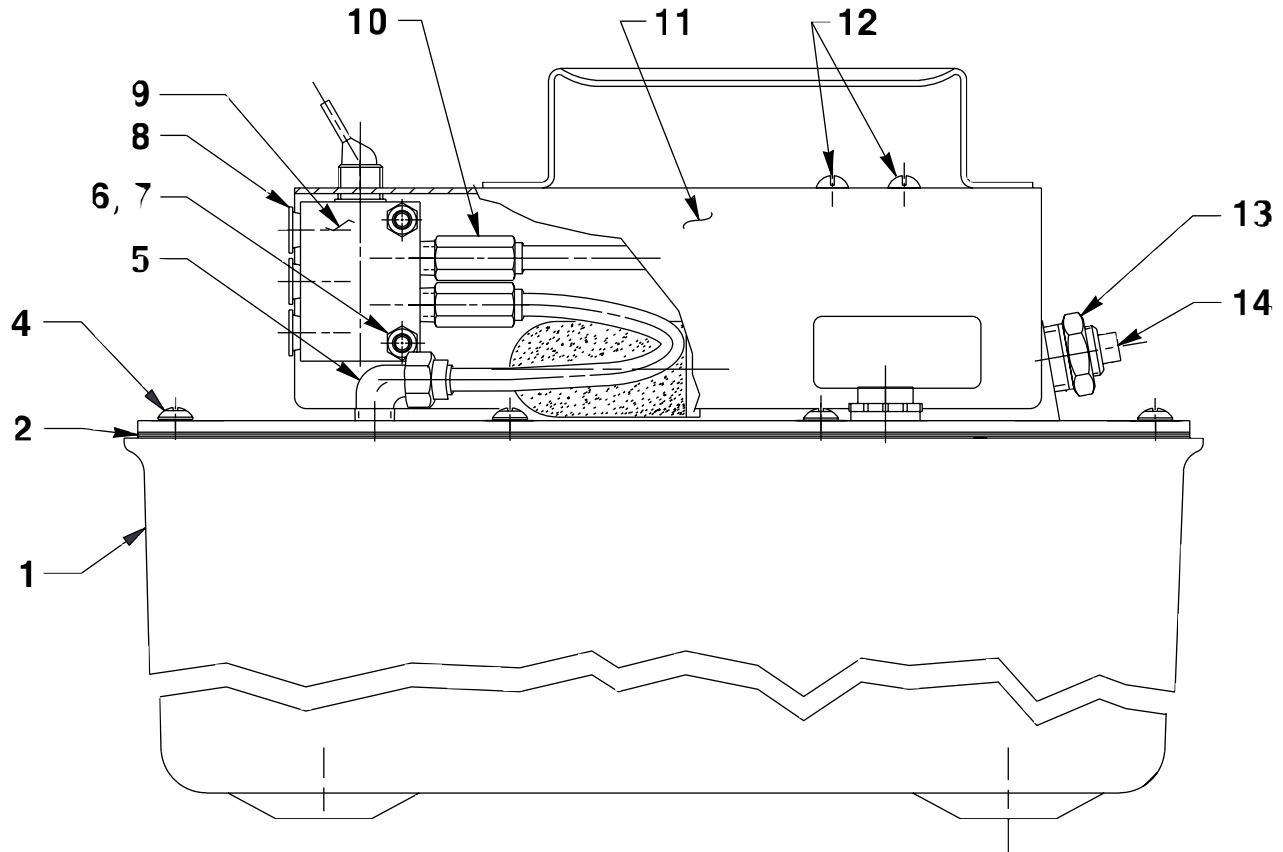


MODEL F
AIR HYDRAULIC PUMP
Max. Capacity: 10,000 PSI (700 Bar)
SIDE VIEW

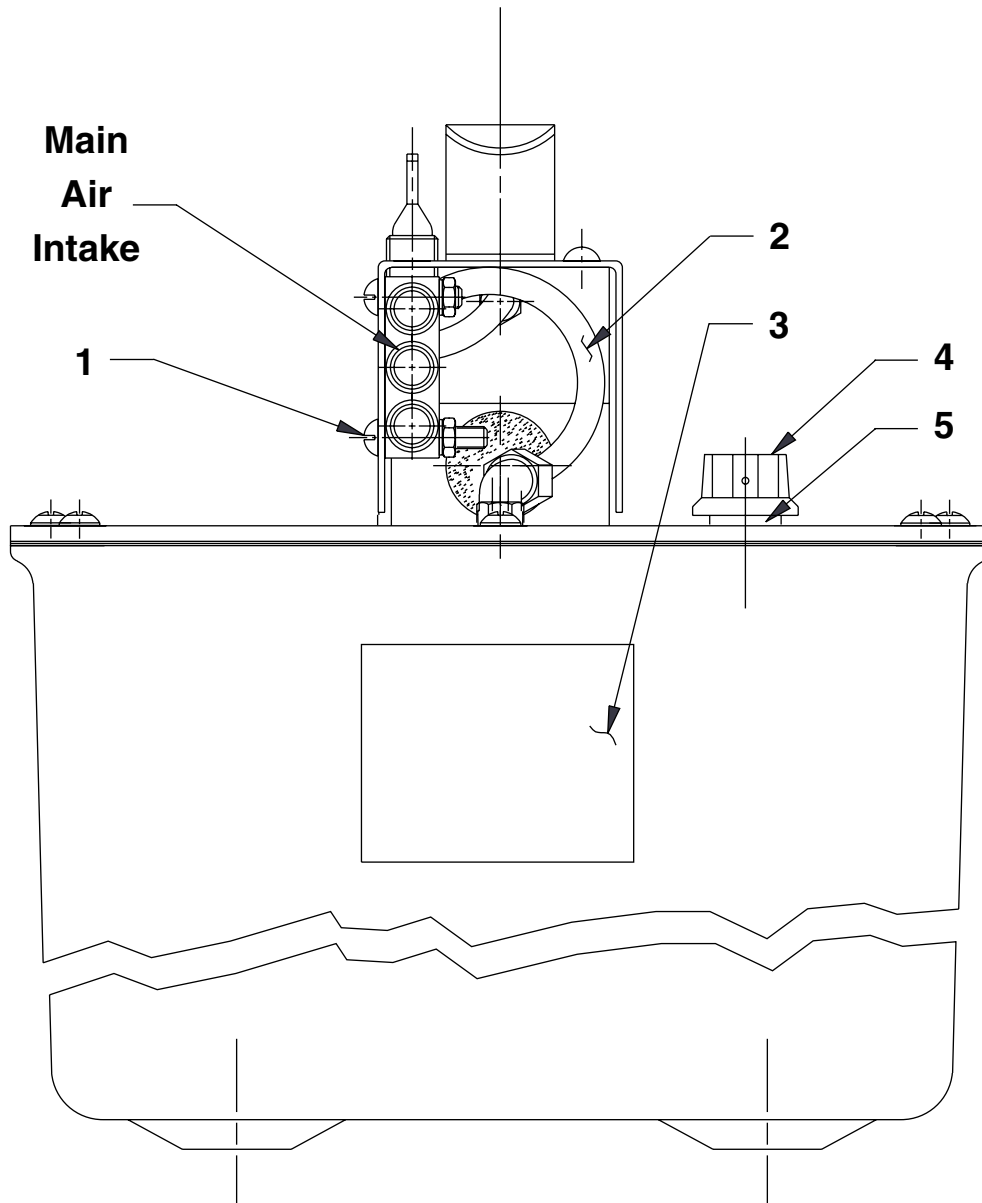


Item No.	Part No.	No. Req'd	Description
1	61165	1	Reservoir
2	*47409	1	Gasket
4	252168	10	Pan Head Screw (1/4-10 X 1" Lg. Self-tapping; Torque to 35/45 in. lbs.)
5	15457	1	Elbow
6	10197	2	Nut (#10-24 UNC; For 64722)
7	11108	2	Lockwasher (#10 External Tooth; For 64722)

Item No.	Part No.	No. Req'd	Description
8	15697	3	Caplug (1/8 NPTF; For 64722)
9	350359	1	Air Operated Valve (For 64722)
10	250464	3	Straight Fitting (For 64722)
11	420384BK2	1	Shroud
12	10164	4	Slotted Screw (#10-24 UNC X 3/8 Lg.)
13	10676	1	Straight Male/Female Fitting
14	13272	1	Plastic Pipe Plug (1/4 NPTF)

Part numbers marked with an asterisk (*) are contained in Repair Kit No. 300851.

END VIEW

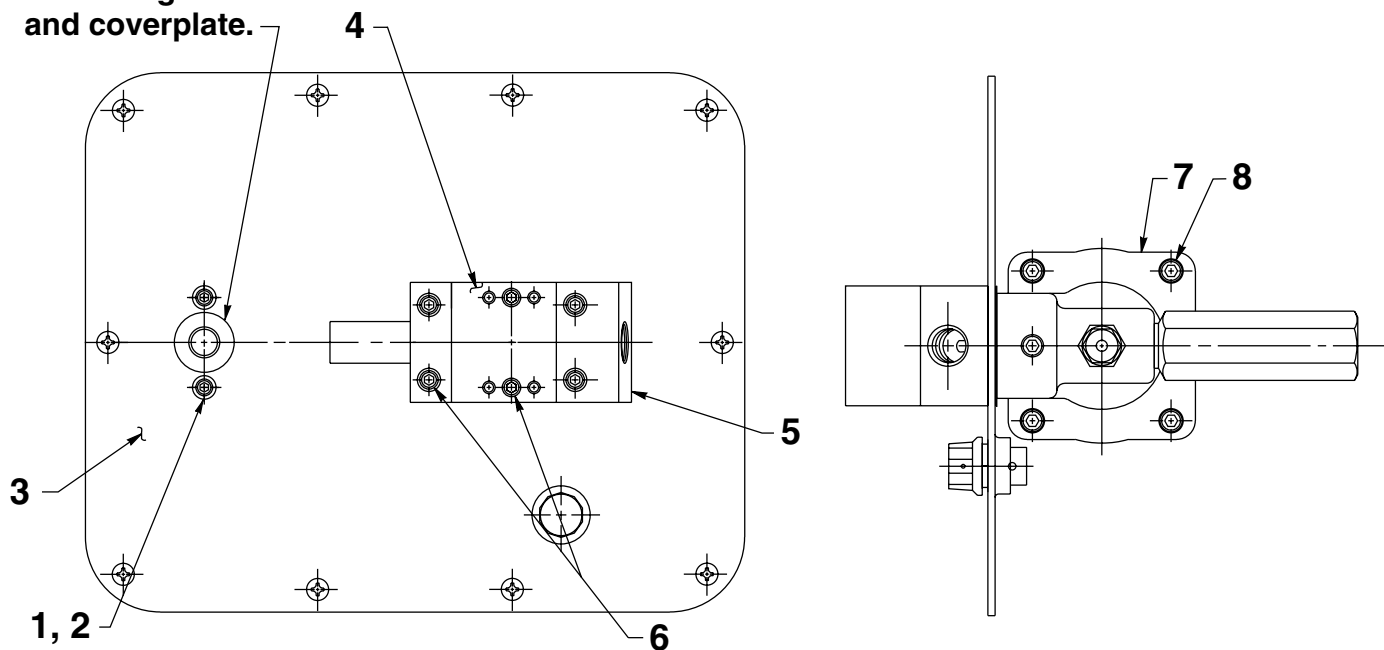


Item No.	Part No.	No. Req'd	Description
1	11856	2	Machine Screw (#10-24 X 1" Lg.; For 64722)
2	14726	.8 ft.	Tubing (For 64722)
3	*305494	1	Decal
4	251689	1	Filler/Breather Cap
5	*10273	1	O-ring (13/16 X 5/8 X 3/32)

Part numbers marked with an asterisk (*) are contained in Repair Kit No. 300851.

BASIC PUMP ASSEMBLY TOP & END VIEW

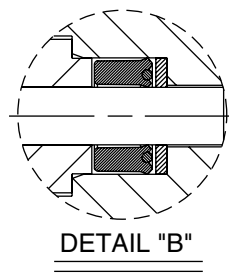
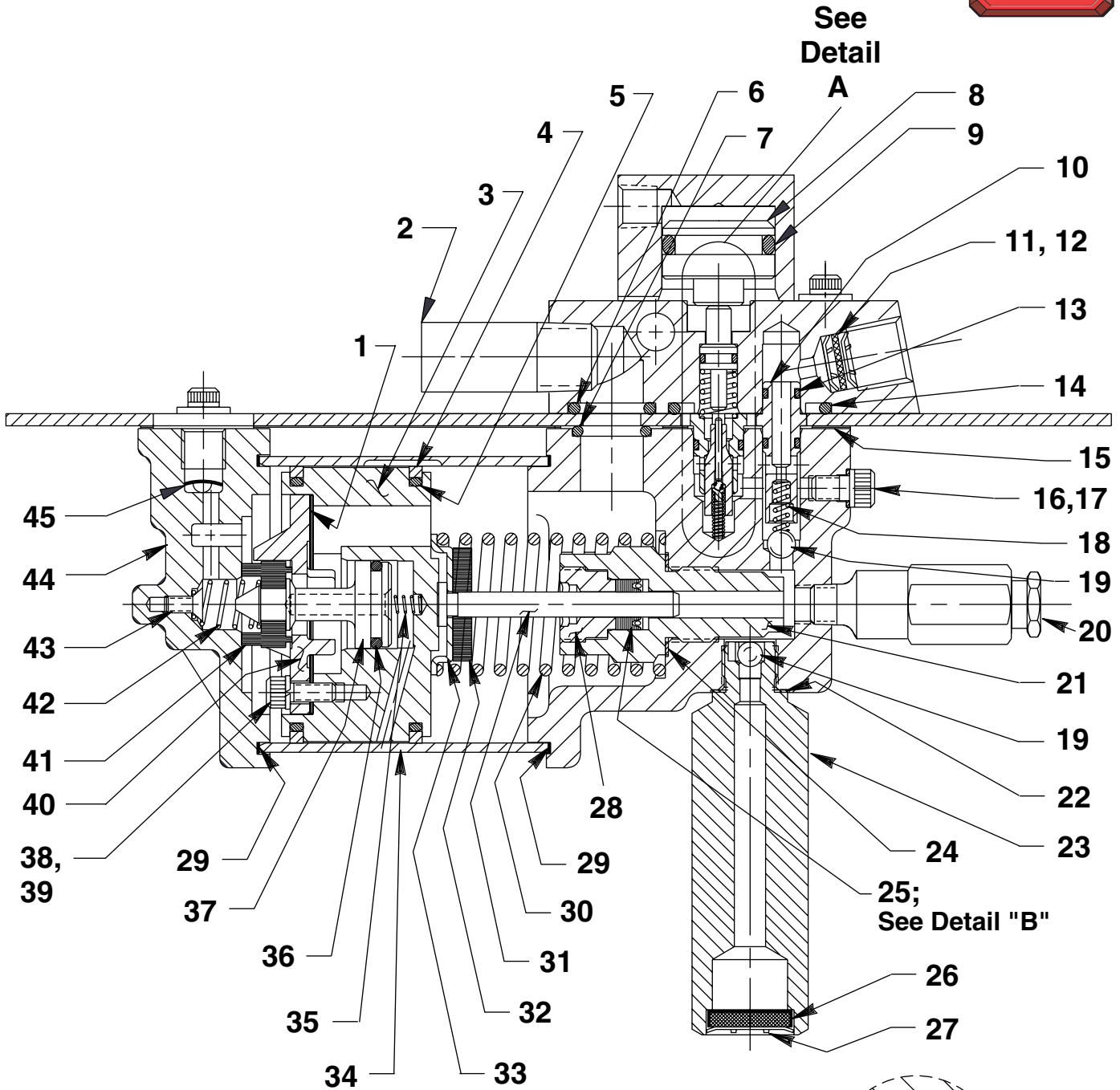
Apply Permatex
between gasket
and coverplate.



Item No.	Part No.	No. Req'd	Description
1	11434	2	Soc. Hd. Cap Screw (10-24 UNC X 1/2 Lg.)
2	11089	2	Washer (No. 10)
3	58706BK2	1	Cover Plate
4	420293	1	Valve Body
5	58685	1	Release Valve
6	11151	4	Soc. Hd. Cap Screw (10-24 UNC X 1-1/4" Lg.)
7	64767	1	Pump Body
8	17428	4	Soc. Hd. Cap Screw (1/4-20 UNC X 3-1/2" Lg.; Torque to 85/95 in. lbs. oiled; Note: cross torque in increments of 30 in. lbs.)

BASIC PUMP ASSEMBLY SIDE VIEW

To Parts
List



Item No.	Part No.	No. Req'd	Description
1	*28239	1	Gasket
2	250461	1	Muffler
3	52390	1	Piston Body
4	*14265	2	Piston Ring
5	*251835	2	O-ring (2-1/2" X 2-5/16" X 3/32; Nitrile)
6	*10276	1	O-ring (1" X 3/4 X 1/8; Nitrile)
7	*10272	1	O-ring (3/4 X 9/16 X 3/32; Nitrile)
8	34757	1	Piston Release
9	*208144	1	O-ring (1-1/8" X 7/8 X 1/8; Nitrile)
10	34378	1	Check Valve Body
11	*250638	1	Oil Filter Disc
12	*11088	2	Retaining Ring
13	*12522	2	O-ring (3/8 X 1/4 X 1/16; Urethane)
14	*11841	1	O-ring (1-5/8" X 1-3/8" X 1/8; Nitrile)
15	*351021	1	Gasket
16	*10442	1	Washer
17	10002	1	Cap Screw (1/4-20 UNC X 3/8 Lg.; Torque to 90/110 in. lbs.)
18	*10445	1	Compression Spring (5/32 O.D. X 3/4 Lg.)
19	*10423	2	Steel Ball (9/32 Dia.)
20	21278	1	Relief Valve Assembly (Apply Loctite [PT #905516] or equiv. & torque to 150/170 in. lbs.)
21	45278	1	Piston Cylinder (Torque to 90/100 ft. lbs. oiled)
22	*10261	1	Copper Washer (3/4 X 19/32 X 1/32)
23	48007	1	Filter Adapter (Torque to 40/50 ft. lbs. oiled)
24	*10263	1	Copper Washer (1" X .765 X 1/32)
25	*13934	1	U-cup & Backup
26	214578	1	Filter (For 64722)
27	214586	1	Internal Retaining Ring (For 64722)
28	*304295	1	Retainer (Note: See "INSTRUCTIONS FOR RETAINER REPLACEMENT" on sheet 4 of 4.)
29	*17429	2	Backup Ring
30	*13938	1	Compression Spring (1.452 O.D. X 4-7/16" Lg.)
31	28226	1	Piston
32	203143	1	Bumper
33	210994	1	Spring Guide
34	37434	1	Air Cylinder (Note: Locate groove on upper half (top) of pump with chamfered tube end towards rear head as shown.)
35	*12692	1	Compression Spring (3/16 O.D. X 1-11/16" Lg.)
36	*211052	1	O-ring (.900 X .706 X .097; Nitrile)
37	305475	1	Exhaust Valve Stem
38	*10241	3	Lockwasher (For #10 bolt)
39	211054	3	Screw (#10-24 X 1/2 Lg.; Torque to 50/55 in. lbs.)
40	33822	1	Piston End Plate
41	*28183	1	Piston Poppet
42	*205679	1	Compression Spring (.485 O.D. X .915 Lg.)
43	*205674	1	Screw (8-32 UNC X 3/8 Lg.; Torque to 12/18 in. lbs.)
44	37468	1	Rear Head
45	*216296	1	Filter Disc

PARTS INCLUDED BUT NOT SHOWN

250464	1	Straight Fitting (1/8 NPTF; For 64722-GL)
--------	---	---



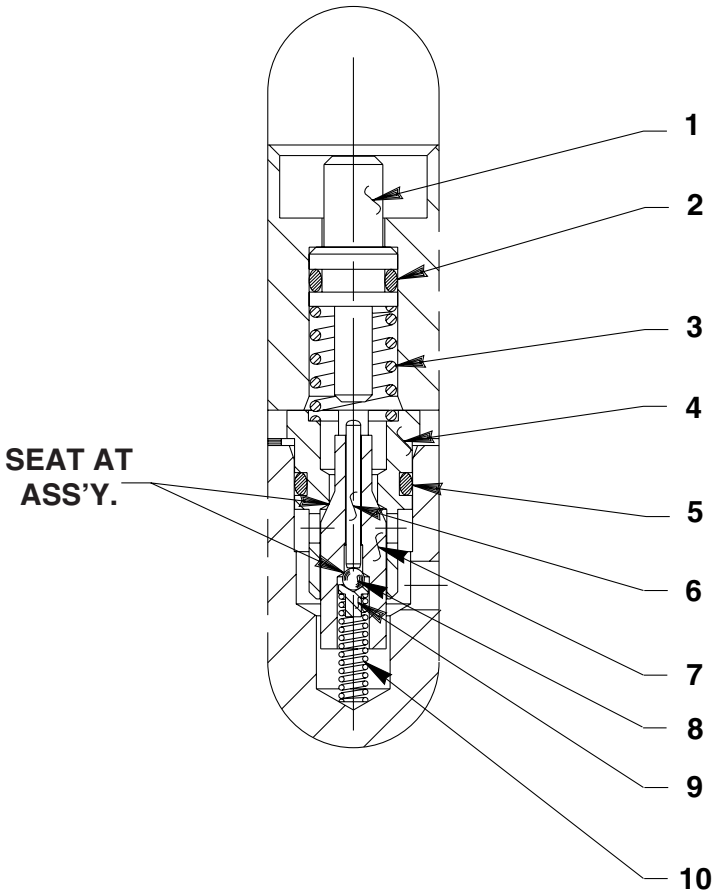
Part numbers marked with an asterisk (*) are contained in Repair Kit No. 300851.

Note: Shaded areas reflect last revision(s) made to this form.

Sheet No. 3 of 4

Rev. 8 Date: 3 April 2001

DETAIL "A"

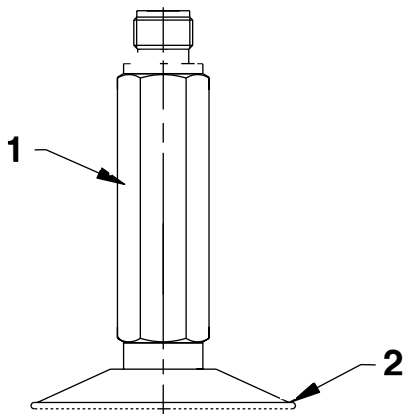


Item No.	Part No.	No. Req'd	Description
1	28227	1	Release Valve Button
2	*10266	1	O-ring (3/8 X 1/4 X 1/16)
3	*13944	1	Compression Spring (3/8 O.D. X 1/2 Lg.)
4	*34377	1	Poppet Retainer
5	*13943	1	O-ring (1/2 X 3/8 X 1/16)
6	13937	1	Dowel Pin (Note: Place tapered end toward ball.)
7	29037	1	Release Valve Poppet
8	*14443	1	Metallic Ball (3/32 Dia.)
9	209736	1	Ball Retainer
10	*13959	1	Compression Spring (1/8 O.D. x 1/2 Lg.)

Part numbers marked with an asterisk (*) are contained in Repair Kit No. 300851.

FILTER ADAPTER ASSEMBLY AFTER 6/1/98

(Reference Part Number 48007)



Item No.	Part No.	No. Req'd	Description
1	422016	1	Filter Adapter
2	29682	1	Filter

INSTRUCTIONS FOR RETAINER REPLACEMENT

Your pump's retainer is locked into place by one of the two following methods. Determine which method was used on your pump's retainer, then follow the appropriate steps to remove the old and install and stake the new.

Method 1 - Retainer shows no sign of stake marks

1. This retainer has been locked in place with a Loctite product. To replace it, a moderate amount of heat needs to be applied to the cylinder nut (in the area of the retainer) to soften the existing Loctite allowing it to be removed.
2. Install the new retainer into the cylinder nut and torque to 80/100 in. lbs. **Note: Do not use a Loctite product this time but stake the new retainer in place according to instructions in Step 3.**
3. To lock retainer into place, use a center punch positioned in the seam between the retainer and the cylinder nut and stake the new retainer in two places approximately 180° apart.

Method 2 - Retainer has two stake marks in the seam between the retainer and the cylinder nut

1. For replacement of this retainer, the stake marks must be removed. Using a 1/8" or larger diameter drill bit, remove the existing stakes by drilling a short distance into the stake marks. Remove the retainer.
2. Install the new retainer into the cylinder nut and torque to 80/100 in. lbs.
3. To lock retainer into place, use a center punch positioned in the seam between the retainer and the cylinder nut and stake the new retainer in two places approximately 180° apart.

NOTE: Do not stake in the old stake marks.

