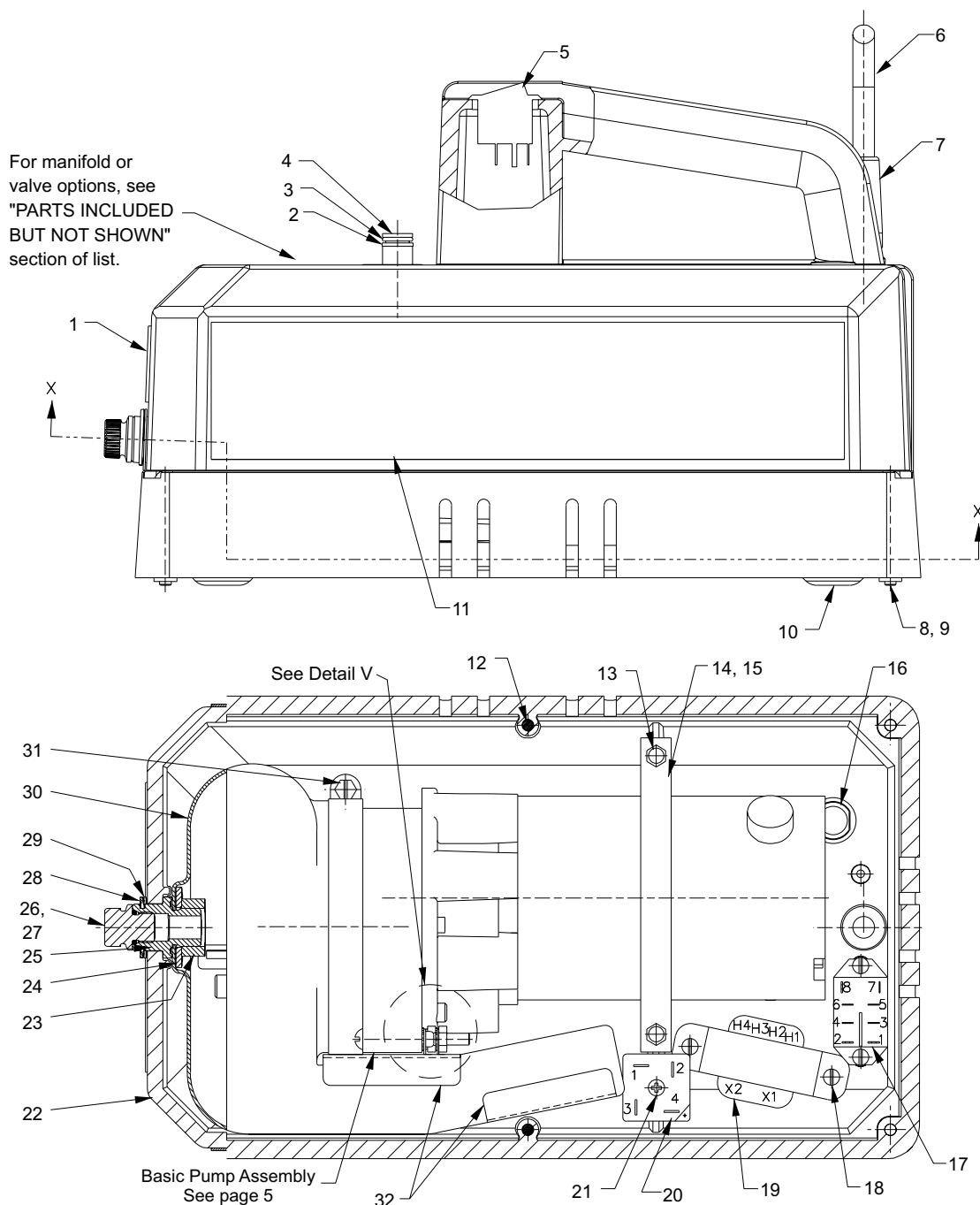


MODEL B (Model C for PE102A-GRC)

# ELECTRIC HYDRAULIC PUMP

Max. Capacity: 10,000 PSI



## SECTION X-X

## PARTS LIST

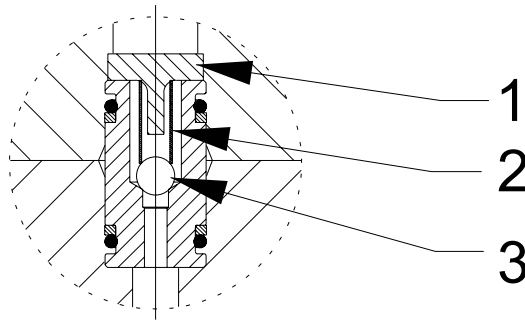
ITEM	PART NO.	DESCRIPTION	QTY.
1	251072	WARNING & FILL INSTRUCTIONS DECAL	1
2	*11863	BACKUP WASHER (1/2 X 3/8 X 1/16)	2
3	*10268	O-RING (1/2 X 3/8 X 1/16; For PE102, PE102-220, PE104, PE104-220, PR102, & PR104)	2
	† 17716	O-RING (1/2 X 3/8 X 1/16; For PE102, PE102-220, PE104, PE104-220, PR102, & PR104)	2
	*10268	O-RING (1/2 X 3/8 X 1/16; For PE102A, PE102A-220, & PR102A)	3
	† 17716	O-RING (1/2 X 3/8 X 1/16; For PE102A, PE102A-220, & PR102A)	3
4	202505	BUSHING (For PE102, PE102A, PE102-220, PE102A-220, PR102, & PR104)	1
5	251051	ROCKER SWITCH	1
6	24733	CORD SET (For PE Series only)	1
	250894	ELECTRICAL PLUG (For PR Series only)	1
	12293	ELECTRICAL CABLE (For PR Series only)	1.5 ft.
7	251048	BUSHING	1
8	12515	MACHINE SCREW (10-24 UNC X 1 3/4 Lg.)	4
9	207405	LOCKNUT (10-24 UNC)	4
10	420607	BASE PLATE	1
11	350672	TRADE NAME DECAL (For PR Series)	2
	351035	TRADE NAME DECAL (For PE Series)	2
	252102	TRADE NAME DECAL (For LUKAS)	2
12	14456	SCREW (#10-24 X 1/2 Lg.; Place ground wire terminal between cover & housing)	2
13	211060	SCREW (#9-15 X 1" Lg.)	2
14	251039	MOTOR MOUNTING STRAP	.5 ft.
15	251041	CHANNEL RUBBER	3"
16	251045	"D" BUSHING PLUG	1
17	251046	RELAY (For PE Series only)	1
18	15468	SCREW (#6-32 X 3/8 Lg.)	4
19	251049	TRANSFORMER (For PE Series only)	1
20	251050	RECTIFIER (For PE Series only)	1
21	251073	SCREW (6-32 X 3/4 Lg.; For PE Series only)	1
22	64363	PLASTIC HOUSING	1
	64616	PLASTIC HOUSING (For PE102AR & PE102AR-220)	1
23	10394	HEX NUT (5/8-18 UNF)	1
24	13324	WASHER (For 5/8 Bolt)	1
25	350583	FILLER ADAPTER	1
26	*13755	O-RING (.558 X .414 X .072)	1
	† 250135	O-RING (.558 X .414 X .072)	1
27	251280	O-RING BOSS PLUG	1
28	251043	RETAINING RING	1
29	201373	RETAINER WASHER	1

## Parts List Continued

ITEM	PART NO.	DESCRIPTION	QTY.
30	420643	BLADDER	1
	† 420736	BLADDER	1
31	350305	CLAMP, HOSE 3 7/8 - 4 7/16 WORM DRIVE	1
32	2001397	BLADDER SPACER	1
<b>PARTS INCLUDED BUT NOT SHOWN</b>			
	† 250238	DECAL (EPR Seals)	1
	350646	CORD SET (For PR Series only)	1
	10855	SCREW (Torque to 160/180 in. lbs. Tighten the screw on the right-hand side facing the pump first.)	2
	*10268	O-RING (1/2 X 3/8 X 1/16; For PE102A, PE102A-220, & PR102A)	1
	† 17716	O-RING (1/2 X 3/8 X 1/16; For PE102A, PE102A-220, & PR102A)	1
	251253	REMOTE SWITCH (For PR102A-DEUT)	1
	251635	REMOTE SWITCH (For PE102A-EMP)	1
	251048	BUSHING (For units equipped with a remote switch)	1
	250176	FUSE (For PE102, PE102A, & PE102A-220)	1
	206962	FUSE (For PE102-220, PE102A-220, & PE104-220)	1
	251561	RECEPTACLE (For PE102AR & PE102AR-220)	1
	14456	SCREWS (#10-24 X 1/2 Lg.; For PE102AR & PE102AR-220)	2
<b>OTHER OPTIONS AND ACCESSORIES</b>			
	9562	MANIFOLD (For PE102A, PE102A-220, PR102A, PE102A-EMP, & PR102A-DEUT; See Form No. 101344)	1
	9561	2 POSITION, 2-WAY VALVE (For PE102, PE102-220, PE102A-EMP, PR102A-DEUT, & PR102; See Form No. 101327)	1
	9563	3 POSITION, 4-WAY VALVE (For PE104, PE104-220, & PR104; See Form No. 101326)	1
	9560	PRESSURE REGULATOR (For PE102-ANCHOR; See Form No. 101328)	1
	10461	FOOT SWITCH ASSEMBLY	1
	25017	HAND SWITCH ASSEMBLY	1
	9625	PRESSURE SWITCH (See Form No. 100589)	1
	BP12V	12 VOLT BATTERY PACK (Includes sealed lead acid battery, 115V charger, battery-to-pump 4 ft. cord set, carrying case and shoulder strap.)	1
	VC220	VOLTAGE CONVERTER w/ PLUG ADAPTERS (Converts 220V 50/60 cycle to 110V 50/60 cycle)	1
	RB12V	REPLACEMENT BATTERY ONLY	1
	RC12V	REPLACEMENT BATTERY 4 Ft. CORD SET (For BP12V)	1
	351240	MANIFOLD (For PE102-28-DC & PE102-28-220DC)	1
	351845	ELECTRICAL PLUG (For LUKAS)	1
<b>Part numbers marked with an asterisk (*) are contained in Repair Kit No. 300651.</b>			
<b>Part numbers marked with a dagger (†) are contained in EPR Seal Kit No. 3000008.</b>			

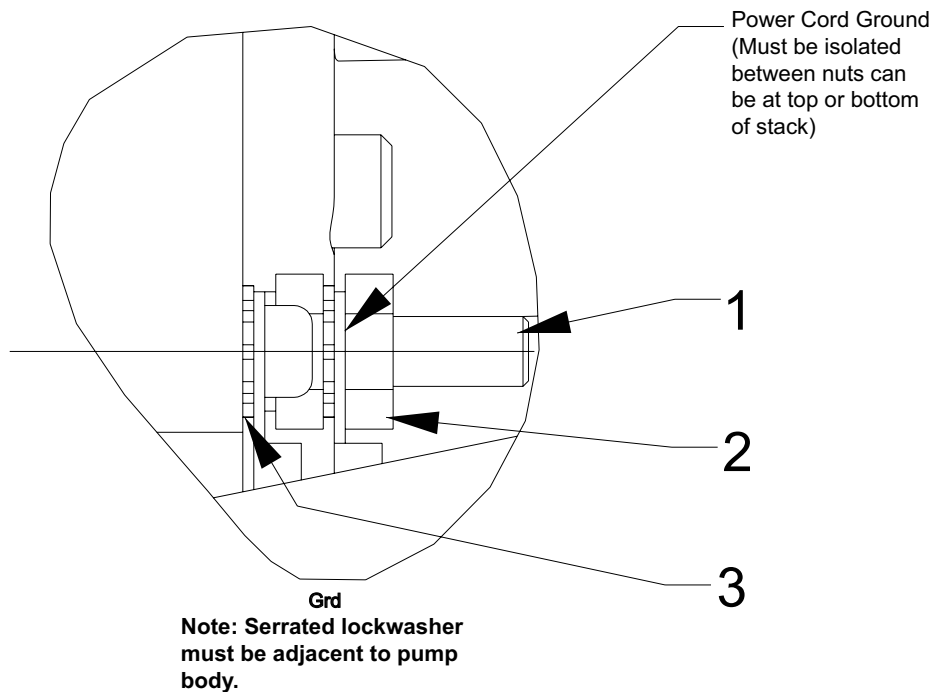
**NOTE: For LUKAS brand pumps, if additional parts (that are not shown here) need replacing, contact your nearest LUKAS service center.**

## DETAIL FOR 4-WAY VALVE OUTLET CHECK (FOR PE104, PE104-110-3000, PE104-110-5000, PE104-220, & PR104)



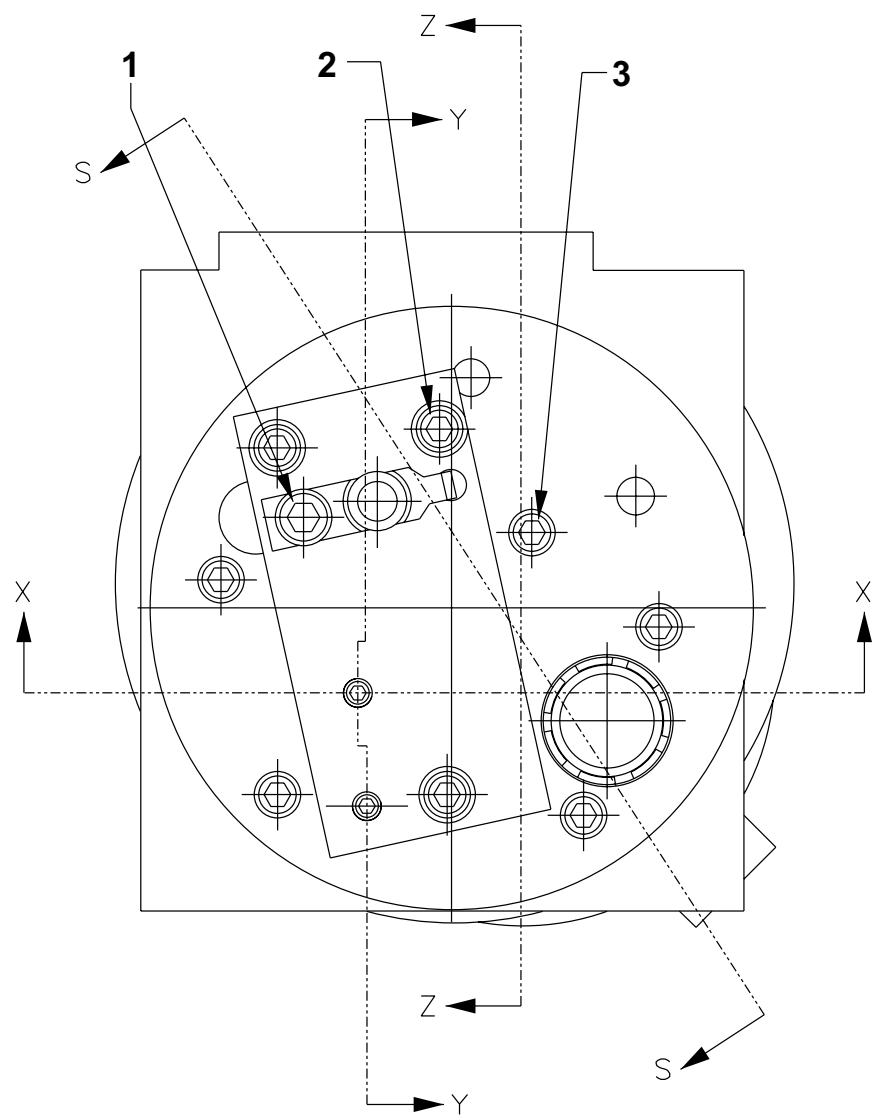
ITEM	PART NO.	DESCRIPTION	QTY.
1	209795	OUTLET BALL STOP	1
2	*10445	COMPRESSION SPRING (5/32 O.D. X 3/4 Lg.)	1
3	*12223	BALL (3/16 Dia.)	1
Part numbers marked with an asterisk (*) are contained in Repair Kit No. 300651.			

## DETAIL V



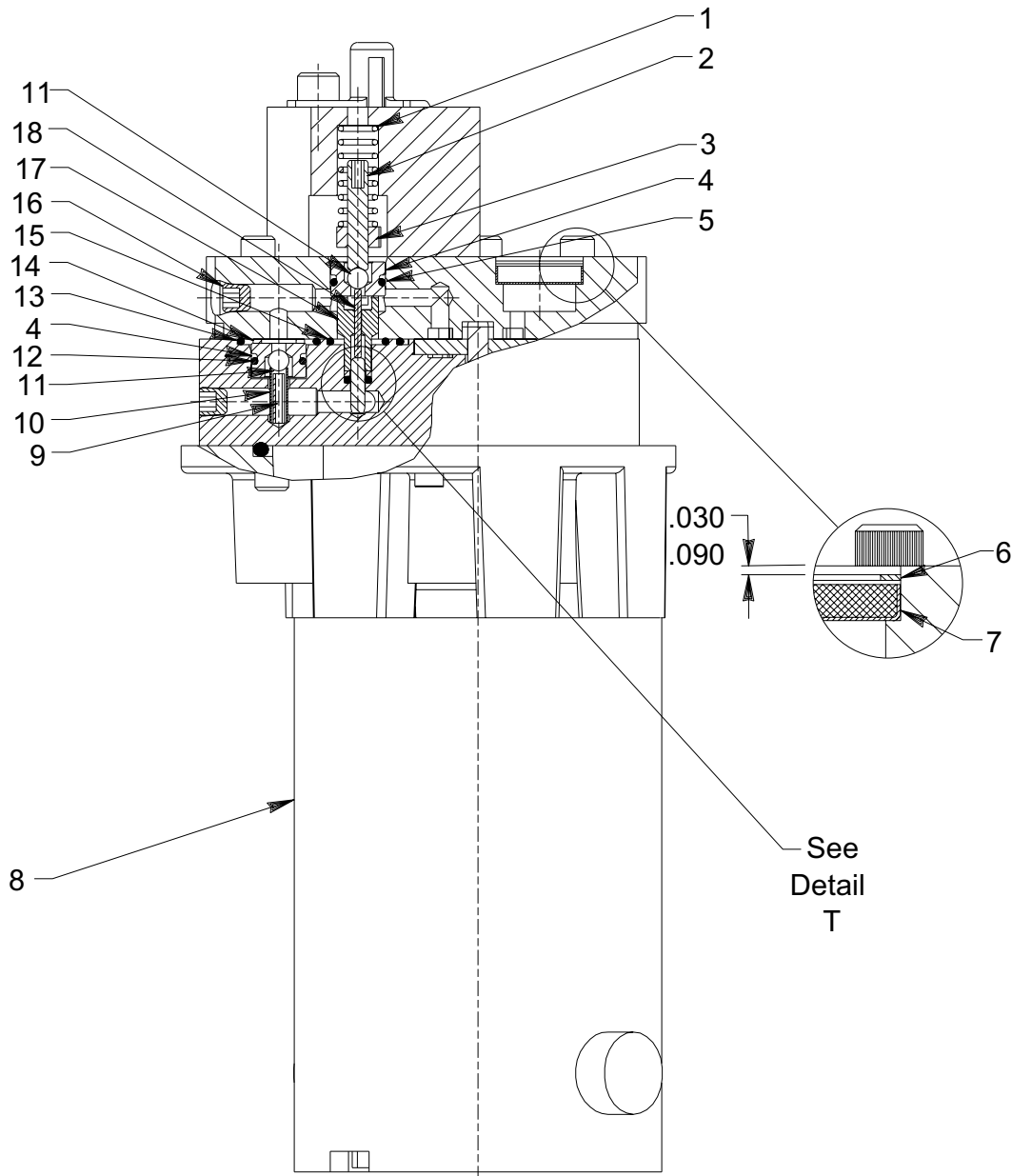
ITEM	PART NO.	DESCRIPTION	QTY.
1	12515	MACHINE SCREW (#10-24 UNC X 3/4 Lg.)	1
2	10197	NUT (#10-24 UNC)	2
3	11108	LOCKWASHER (#10 External Tooth)	2

BASIC PUMP ASSEMBLY



ITEM	PART NO.	DESCRIPTION	QTY.
1	10002	SCREW (1/4-20 UNC X 3/8 Lg.; Torque to 80/100 in. lbs.)	1
2	14423	SCREW (#10-24 X 2" Lg.; Torque to 60/80 in. lbs.)	3
3	14426	SCREW (#10-24 UNC X 1" Lg.; Torque to 60/80 in. lbs.)	5

## SECTION X-X



ITEM	PART NO.	DESCRIPTION	QTY.
1	*14484	COMPRESSION SPRING (3/8 O.D. X 1" Lg.)	1
2	*251067	SET SCREW (#10-24 UNC X 1" Lg. Set unloading valve to 400/500 PSI)	1
3	*207405	LOCKNUT (10-24 UNC)	1
4	*251065	REPLACEABLE SEAT	1
5	*10268	O-RING (1/2 X 3/8 X 1/16)	1
	† 17716	O-RING (1/2 X 3/8 X 1/16)	1
7	*214578	FILTER	1

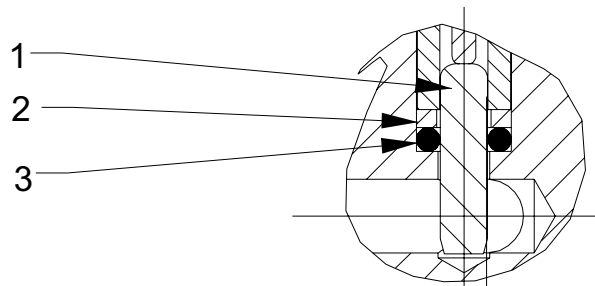
## Parts List Continued

ITEM	PART NO.	DESCRIPTION	QTY.
8	421297-110-G	MOTOR (For PE102, PE102A, & PE104; For replacement brush assembly, order [2] #251114-110)	1
	421297-220-G	MOTOR (For PE102-220, PE102A-220, & PE104-220; For replacement brush assembly, order [2] #251114-220)	1
	421297-12-G	MOTOR (For PR102, PR102A, & PR104; For replacement brush assembly, order [2] #251114-220)	1
9	11512	ROLL PIN	1
10	*15141	COMPRESSION SPRING (3/16 O.D. X 5/8 Lg.)	1
11	*12223	BALL (3/16 Dia.)	2
12	*13943	O-RING (1/2 X 3/8 X 1/16)	1
	† 17716	O-RING (1/2 X 3/8 X 1/16)	1
13	*10302	O-RING (3/4 X 5/8 X 1/16)	1
	† 12400	O-RING (3/4 X 5/8 X 1/16)	1
14	*11031	COPPER WASHER (15/32 X 5/16 X 1/32)	1
15	*12098	O-RING (9/16 X 7/16 X 1/16)	1
	† 250136	O-RING (9/16 X 7/16 X 1/16)	1
16	15130	PLUG (1/16 NPTF)	3
17	251068	GUIDE	1
18	13937	DOWEL PIN	1

Part numbers marked with an asterisk (\*) are contained in Repair Kit No. 300651.

Part numbers marked with a dagger (†) are contained in EPR Seal Kit No. 3000008.

### DETAIL T

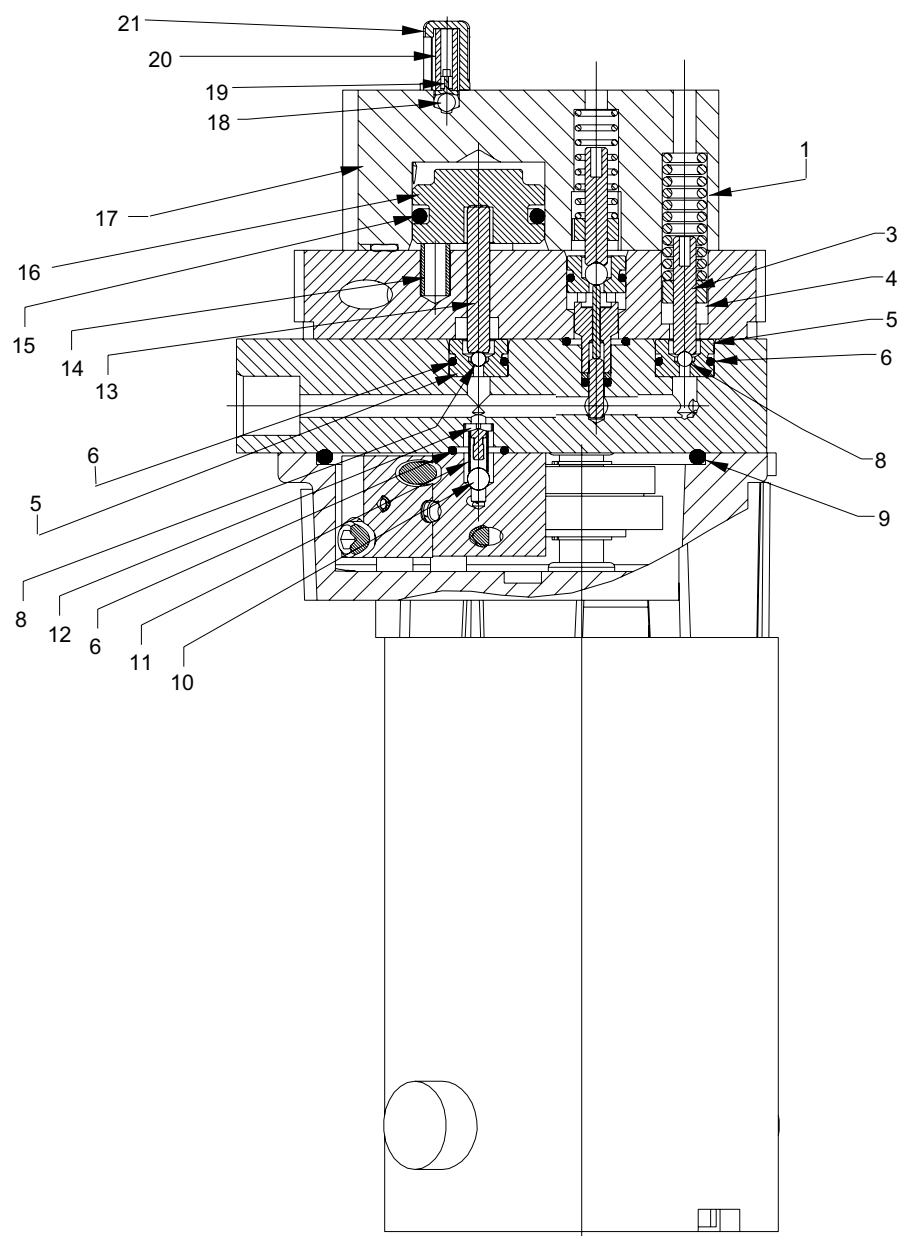


ITEM	PART NO.	DESCRIPTION	QTY.
1	10796	DOWEL PIN	1
2	*214992	BACKUP WASHER (15/64 X 1/8 X 3/64)	1
3	*17797	O-RING (1/4 X 1/8 X 3/64)	1
	† 17713	O-RING (1/4 X 1/8 X 3/64)	1

Part numbers marked with an asterisk (\*) are contained in Repair Kit No. 300651.

Part numbers marked with a dagger (†) are contained in EPR Seal Kit No. 3000008.

SECTION Y-Y





## Parts List Continued

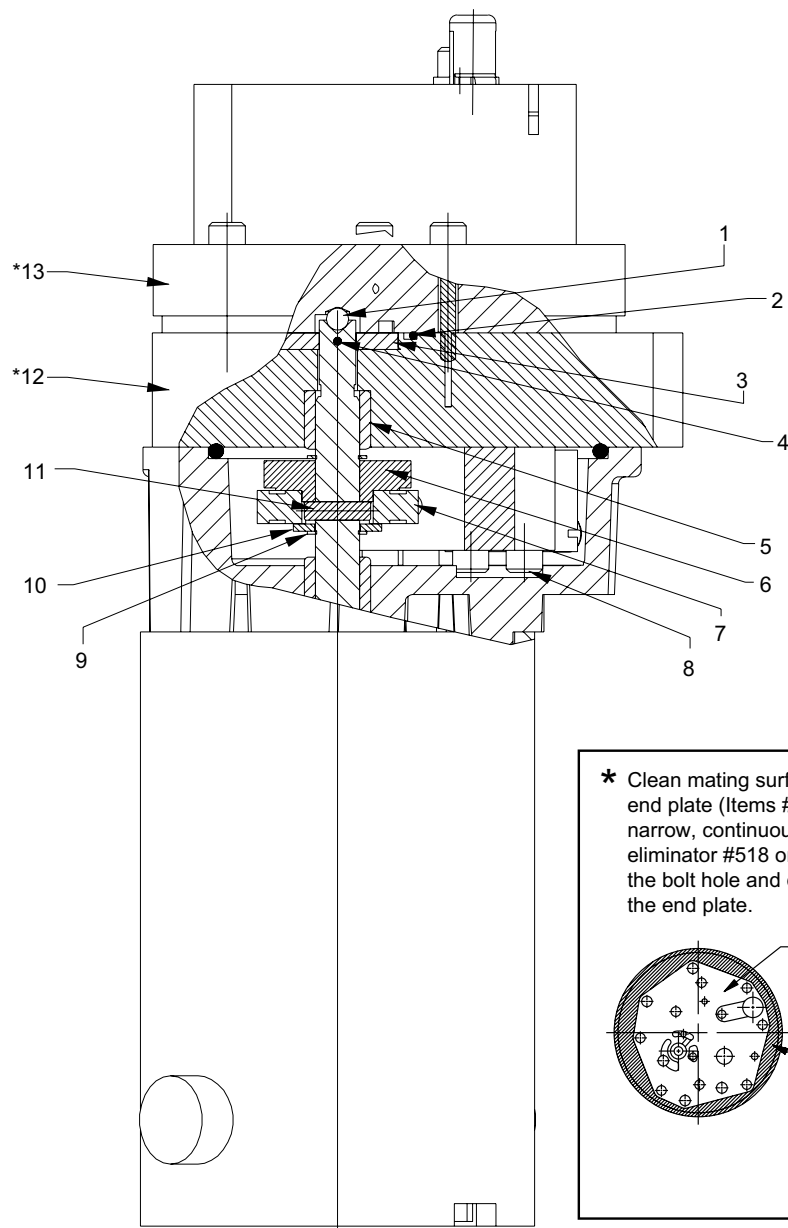
ITEM	PART NO.	DESCRIPTION	QTY.
1	*16724	COMPRESSION SPRING (3/8 O.D. X 1-1/4 Lg.)	1
3	*251067	SET SCREW (#10-24 UNC X 1" Lg.; Set High Pressure Relief Valve to 10,100/10,700 PSI [2,800/3,200 PSI for PE102-28-DC & PE102-28-220DC], [3,100/3,500 PSI for PE104-110-3000], [5,100/5,500 PSI for PE104-110-5000])	1
4	*207405	LOCKNUT (10-24 UNC)	1
5	*251064	REPLACEABLE SEAT	2
6	*13943	O-RING (1/2 X 3/8 X 1/16)	3
	† 17716	O-RING (1/2 X 3/8 X 1/16)	3
8	*10418	STEEL BALL (1/8 Dia.)	2
9	*10297	O-RING (3-1/2 X 3-1/4 X 1/8)	1
	† 13454	O-RING (3-1/2 X 3-1/4 X 1/8)	1
10	*12223	BALL (3/16 Dia.)	1
11	*10445	COMPRESSION SPRING (5/32 O.D. X 3/4 Lg.)	1
12	24549	BALL GUIDE	1
13	*251083	DOWEL PIN	1
14	*11024	COMPRESSION SPRING (1/4 O.D. X 5/8 Lg.)	3
15	*19029	O-RING (1-1/8 X 15/16 X 1/8)	1
	† 251288	O-RING (1-1/8 X 15/16 X 1/8)	1
16	350619	ECCENTRIC	1
17	420616	AUTOMATIC VALVE BODY	1
18	*10374	STEEL BALL (7/32 Dia.)	1
19	200796	ADAPTER	1
20	*15691	COMPRESSION SPRING (1/4 O.D. X 5/8 Lg.)	1
21	350577	SPRING RETAINER	1
Part numbers marked with an asterisk (*) are contained in Repair Kit No. 300651.			
Part numbers marked with a dagger (†) are contained in EPR Seal Kit No. 3000008.			

Refer to any operating instructions included with this product for detailed information about operation, testing, disassembly, reassembly, and preventive maintenance.

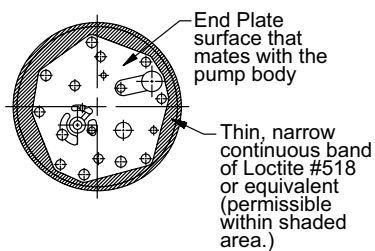
Items found in this parts list have been carefully tested and selected. **Therefore: Use only genuine Power Team replacement parts!**

Additional questions can be directed to our Technical Services Department.

## SECTION Z-Z



\* Clean mating surfaces of pump body and end plate (Items #12 & #13). Apply a thin, narrow, continuous band of Loctite gasket eliminator #518 or equivalent, outside of the bolt hole and drain hole patterns on the end plate.



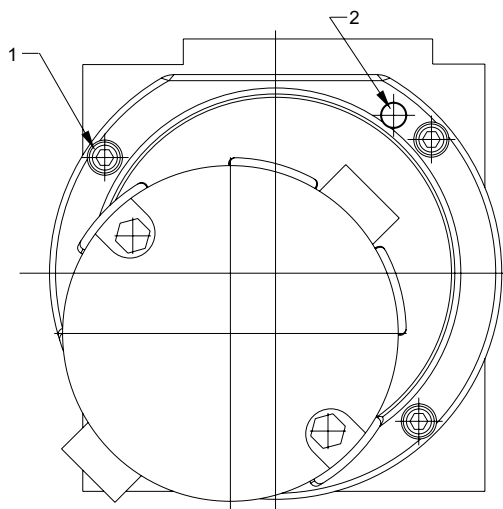
## Parts List Continued

ITEM	PART NO.	DESCRIPTION	QTY.
1	*12223	BALL (3/16 Dia.)	1
2	*251063	O-RING (1-7/16 X 1-5/16 X 1/16)	1
	† 251289	O-RING (1-7/16 X 1-5/16 X 1/16)	1
3	420615	GEROTER SET	1
4	251061	DOWEL PIN	1
5	251129	NEEDLE BEARING	1
6	350606	ECCENTRIC	1
7	15695	BALL BEARING	1
8	250491	SCREW (10-24 UNC X 1-1/4 Lg.; Torque to 60/80 in. lbs.)	4
9	251069	RETAINING RING (Internal)	2
10	252169	WASHER (25/64 X 3/4 X 1/16)	1
11	251117	SPRING PIN	1
12	64346	PUMP BODY	1
13	64347	END PLATE	1

Part numbers marked with an asterisk (\*) are contained in Repair Kit No. 300651.

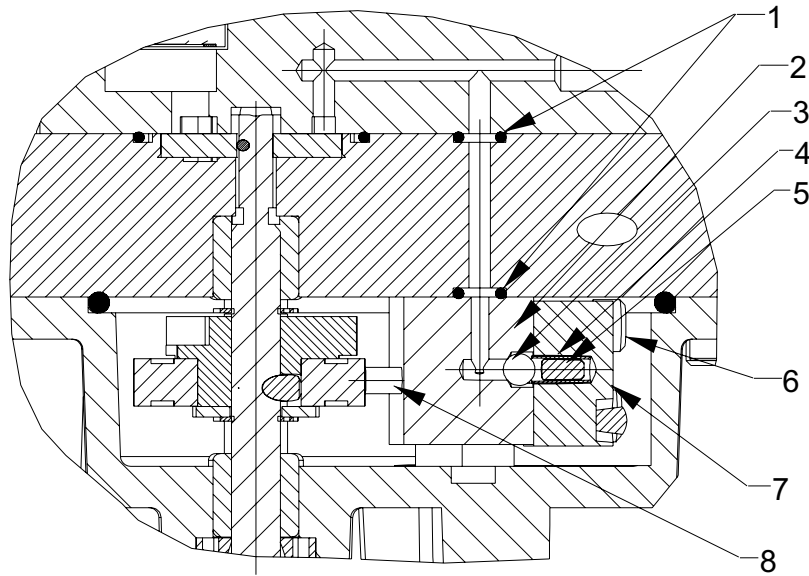
Part numbers marked with a dagger (†) are contained in EPR Seal Kit No. 3000008.

## MOTOR END VIEW



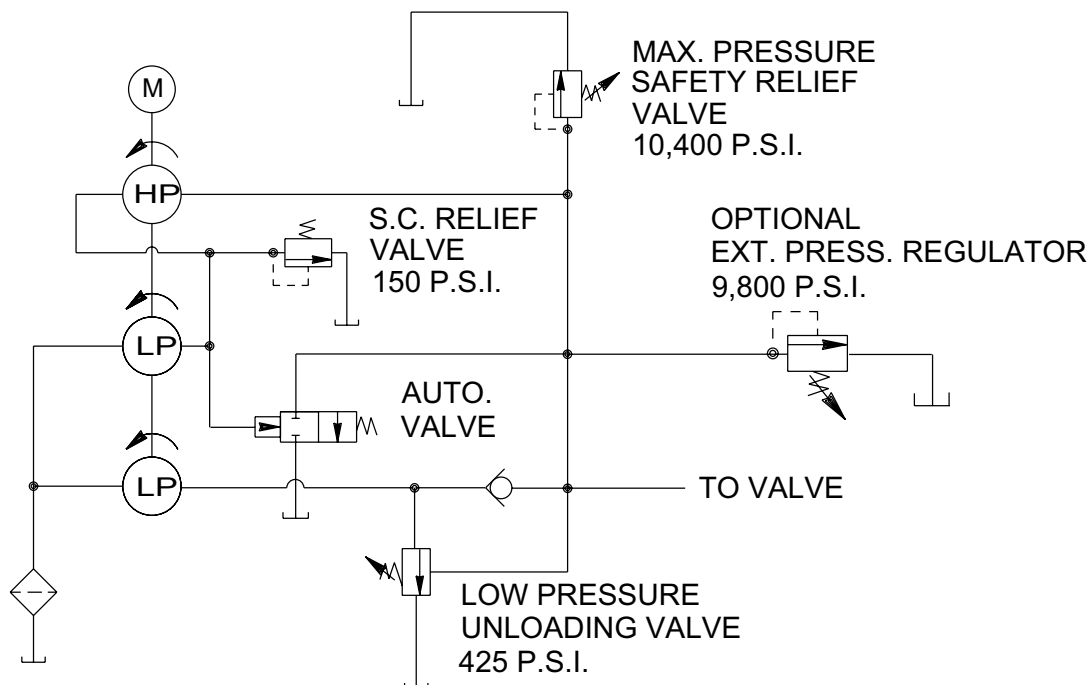
ITEM	PART NO.	DESCRIPTION	QTY.
1	11434	SCREW (10-24 UNC X 1/2 Lg.; Torque to 60/80 in. lbs.)	3
2	17567	PIN	2

## SECTION S-S



ITEM	PART NO.	DESCRIPTION	QTY.
1	*10265	O-RING (5/16 X 3/16 X 1/16)	3
	† 17714	O-RING (5/16 X 3/16 X 1/16)	3
2	420617	HIGH PRESSURE PISTON BODY	1
3	*12223	BALL (3/16 Dia.)	1
4	*10445	COMPRESSION SPRING (5/32 O.D. X 3/4 Lg.)	1
5	251040	DOWEL PIN	1
6	12102	SCREW (#10-24 UNC X 3/4 Lg.; Torque to 60/80 in. lbs.)	3
7	350620	HIGH PRESSURE CAP BODY	1
8	251062	PISTON (Position with chamfer towards bearing)	1
Part numbers marked with an asterisk (*) are contained in Repair Kit No. 300651.			
Part numbers marked with a dagger (†) are contained in EPR Seal Kit No. 3000008.			

## HYDRAULIC SCHEMATIC



## ELECTRICAL INFORMATION

**NOTE:** All electrical information and schematics for these units can be found in Form No. 102808 Operating Instructions.