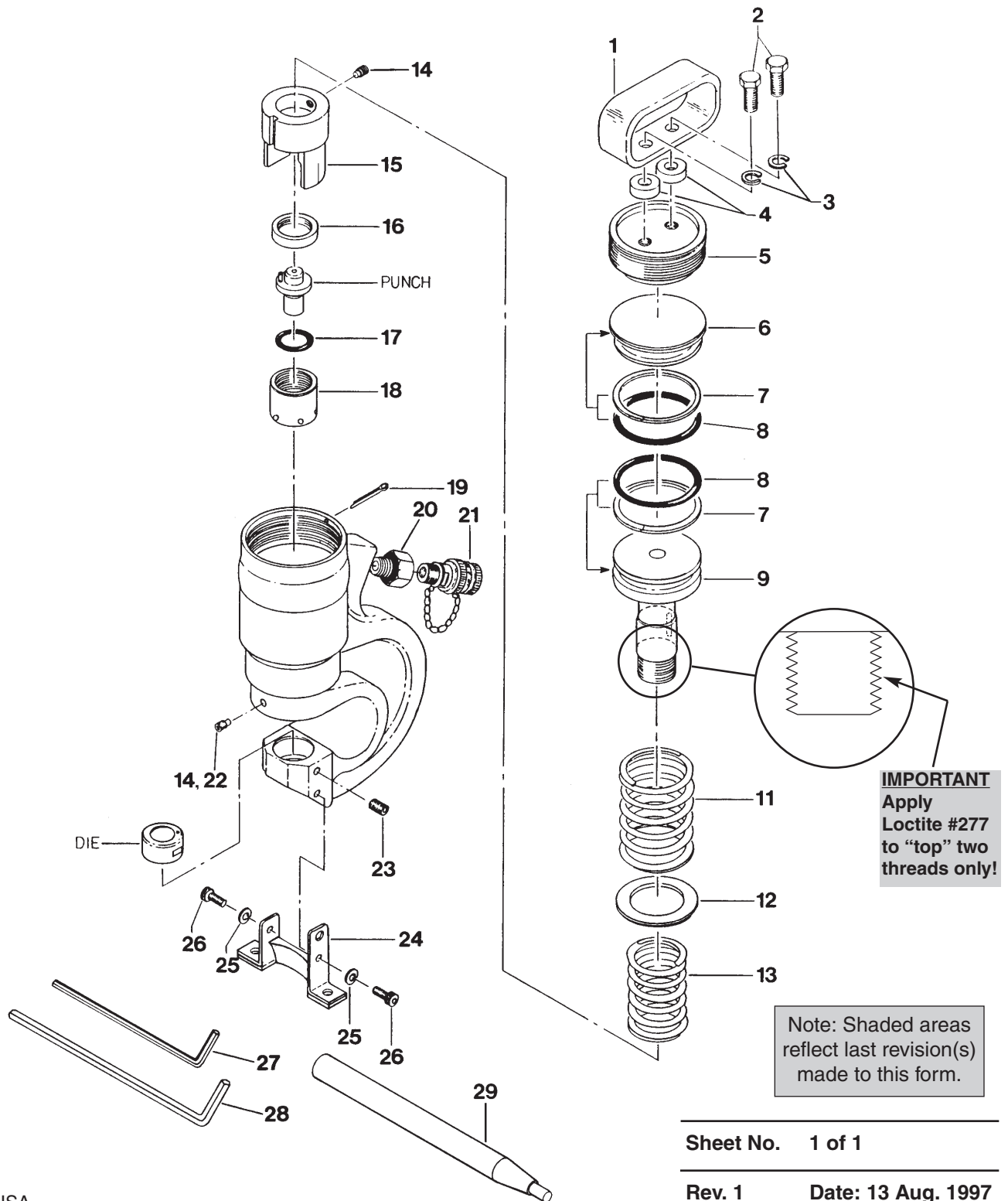


HYDRAULIC PUNCH TOOL
Max. Capacity: 35 Tons



Parts List, Form No. 101713, Back sheet 1 of 1

Item No.	Part No.	No. Req'd	Description
1	250494	1	Handle
2	250495	2	Hex Bolt (M10 x 25)
3	250496	2	Lockwasher (M10)
4	250497	2	Spacer
5	250498	1	Threaded End Cap
6	250499	1	Sealed End Cap
7	*250500	2	Backup Ring
8	*250501	2	Sealing O-ring (P-65)
9	250502	1	Piston Rod (See IMPORTANT statement on front sheet 1 of 1)
11	250505	1	Upper Spring
12	250506	1	Lower Spring Retainer
13	250507	1	Lower Spring
14	250522	1	Ram Key Set Screw (M6 x 1")
15	250508	1	Stripper
16	250509	1	Stopper Nut
17	*250510	1	Punch Centering O-ring (P-26)
18	250511	1	Locking Collar
19	*250513	1	Cotter Pin (3 x 18)
20	250512	1	Thread Adapter
21	9697	1	Ram Half Coupler w/ Dust Cap
22	250503	1	Screw (M5 x 10; Prior to March 1993)
	250522	1	Ram Key Set Screw (M6 x 1"; After March 1993)
23	*250514	1	Set Screw (M8 x 14, D.P.)
24	250515	1	Mounting Bracket
25	250516	2	Lockwasher (M6)
26	250517	2	Set Screw (M6 x 16)
27	7323	1	Hex Key Wrench (2.5 mm)
28	7325	1	Hex Key Wrench (4 mm)
29	250519	1	Locking Collar Tool

PARTS INCLUDED BUT NOT SHOWN

*350389	2	Trade Name/Warning Decal
250518	1	Storage Box

Part numbers marked with an asterisk (*) are contained in Repair Kit No. 300608.

Refer to any operating instructions included with this product for detailed information about operation, testing, disassembly, reassembly, and preventive maintenance.

Items found in this parts list have been carefully tested and selected. **Therefore: Use only genuine Power Team replacement parts!**

Additional questions can be directed to our Technical Services Department.

Note: Shaded areas reflect last revision(s) made to this form.