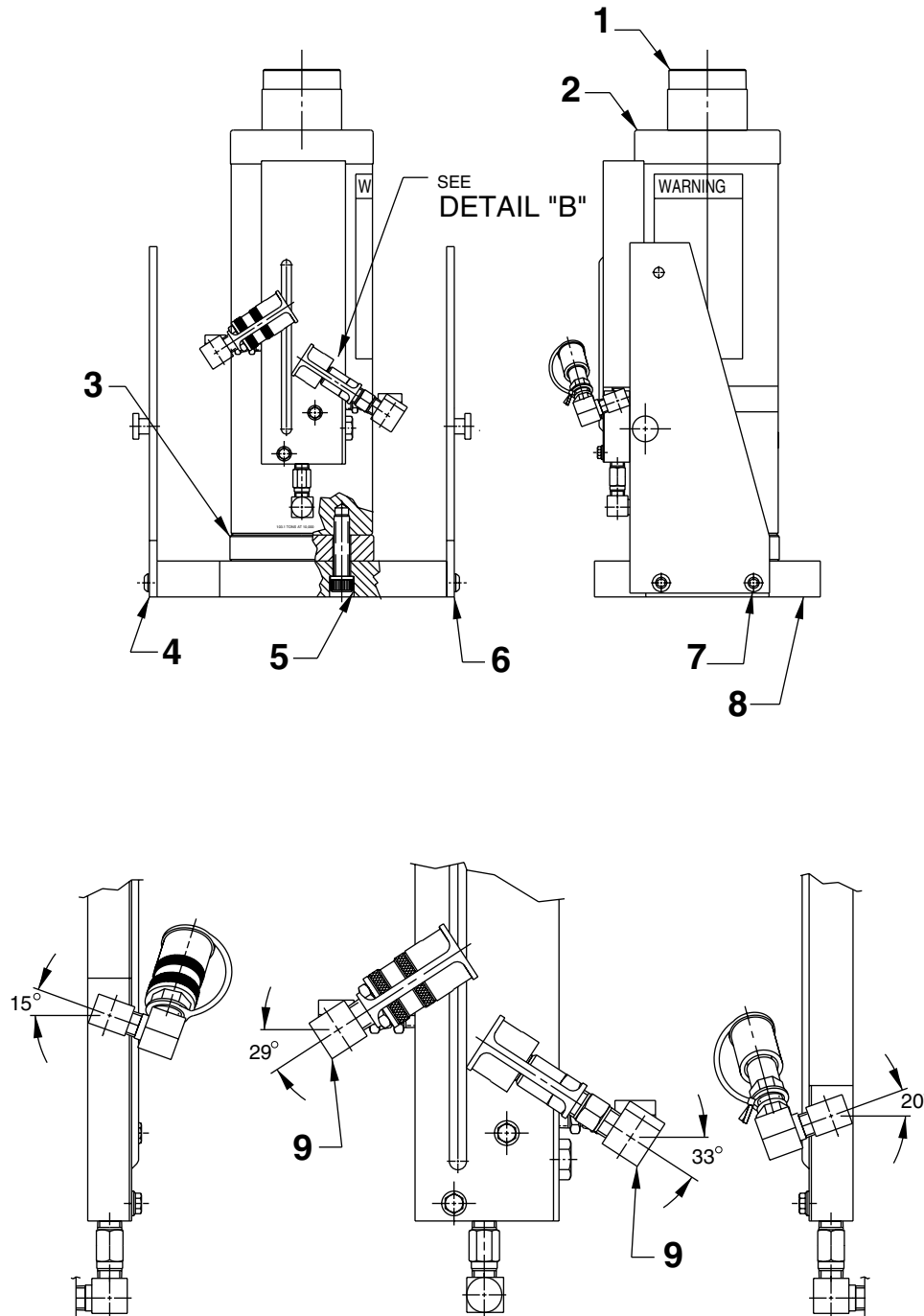


JACK MODULE
MAX. CAPACITY: 103.1 TONS AT 10,000 PSI
JM210 GENERAL ASSEMBLY



DETAIL "B"

Item No.	Part No.	No. Req'd	Description
1	351848	1	Serrated Cap
2	65298	1	Cylinder Assembly (See sheet 4 of 5)
3	421369BK2	1	Cylinder Extension
4	58800BK2	1	Right Side Panel
5	252293	4	Screw (3/4-10 X 3" Lg.; Torque to 200/250 ft. lbs.)
6	58799BK2	1	Left Side Panel
7	252278	4	Screw (1/2-13 X 1-1/4 Lg.; Torque to 70 ft. lbs.)
8	58826BK2	1	Cylinder Base
9	9681	2	Street Elbow Fitting (Note: Rotate approximately as shown in Detail B.)



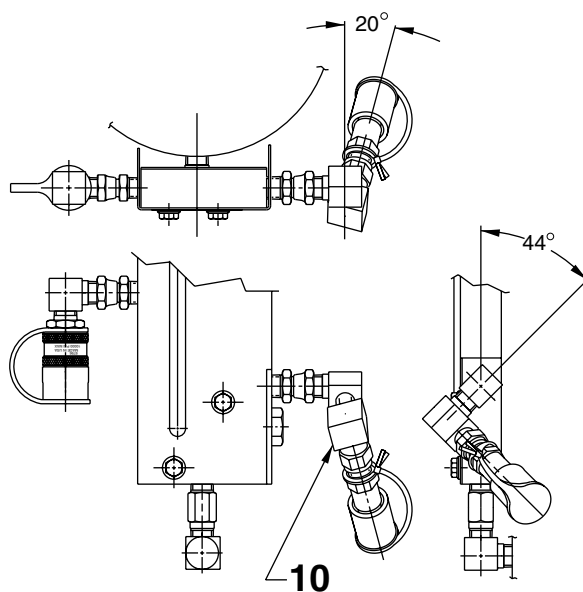
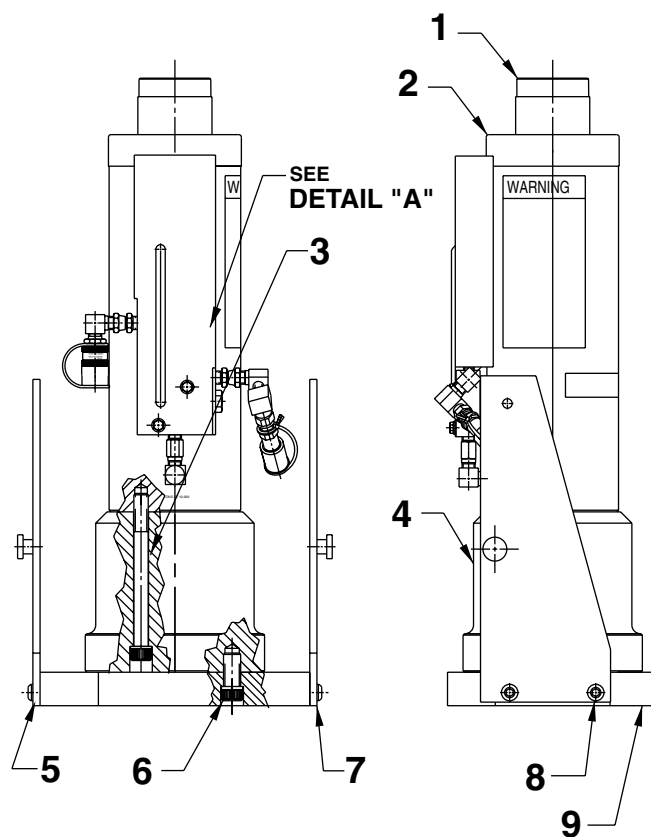
Note: Shaded areas reflect last revision(s) made to this form.

Refer to any operating instructions included with this product for detailed information about operation, testing, disassembly, reassembly, and preventive maintenance.

Items found in this parts list have been carefully tested and selected. **Therefore: Use only genuine Power Team replacement parts!**

Additional questions can be directed to our Technical Services Department.

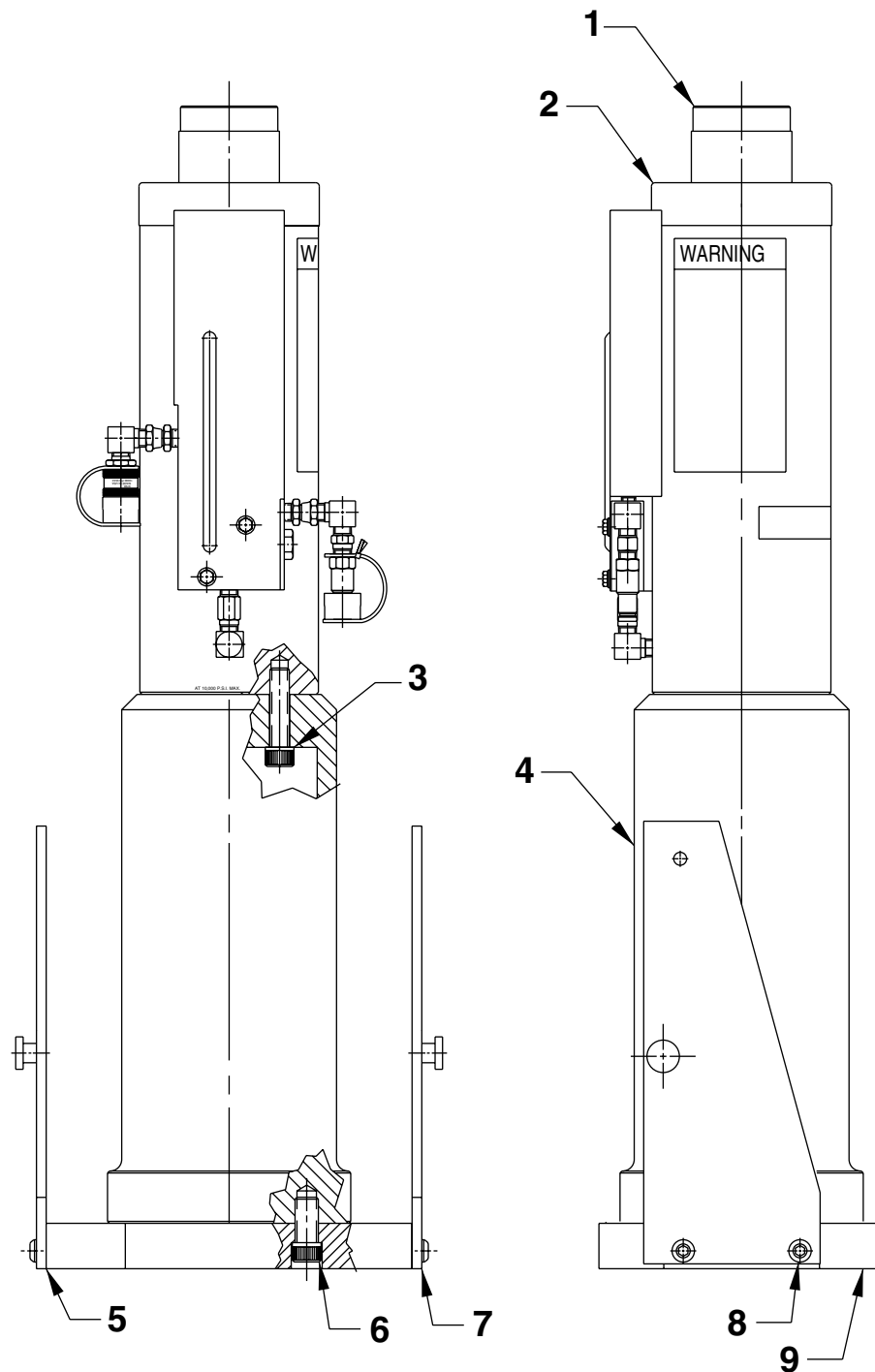
JM310 GENERAL ASSEMBLY

DETAIL "A"

Item No.	Part No.	No. Req'd	Description
1	351848	1	Serrated Cap
2	65298	1	Cylinder Assembly (See sheet 4 of 5)
3	252293	4	Screw (3/4-10 X 3" Lg.; Torque to 200/250 ft. lbs.)
4	58828BK2	1	Cylinder Extension
5	58800BK2	1	Right Side Panel
6	252280	8	Screw (3/4-10 X 1-3/4 Lg.; Torque to 200/250 ft. lbs.)
7	58799BK2	1	Left Side Panel
8	252278	4	Screw (1/2-13 X 1-1/4 Lg.; Torque to 70 ft. lbs.)
9	58831BK2	1	Cylinder Base
10	9681	1	Street Elbow Fitting (Note: Rotate approximately as shown in Detail A.)



Note: Shaded areas reflect last revision(s) made to this form.

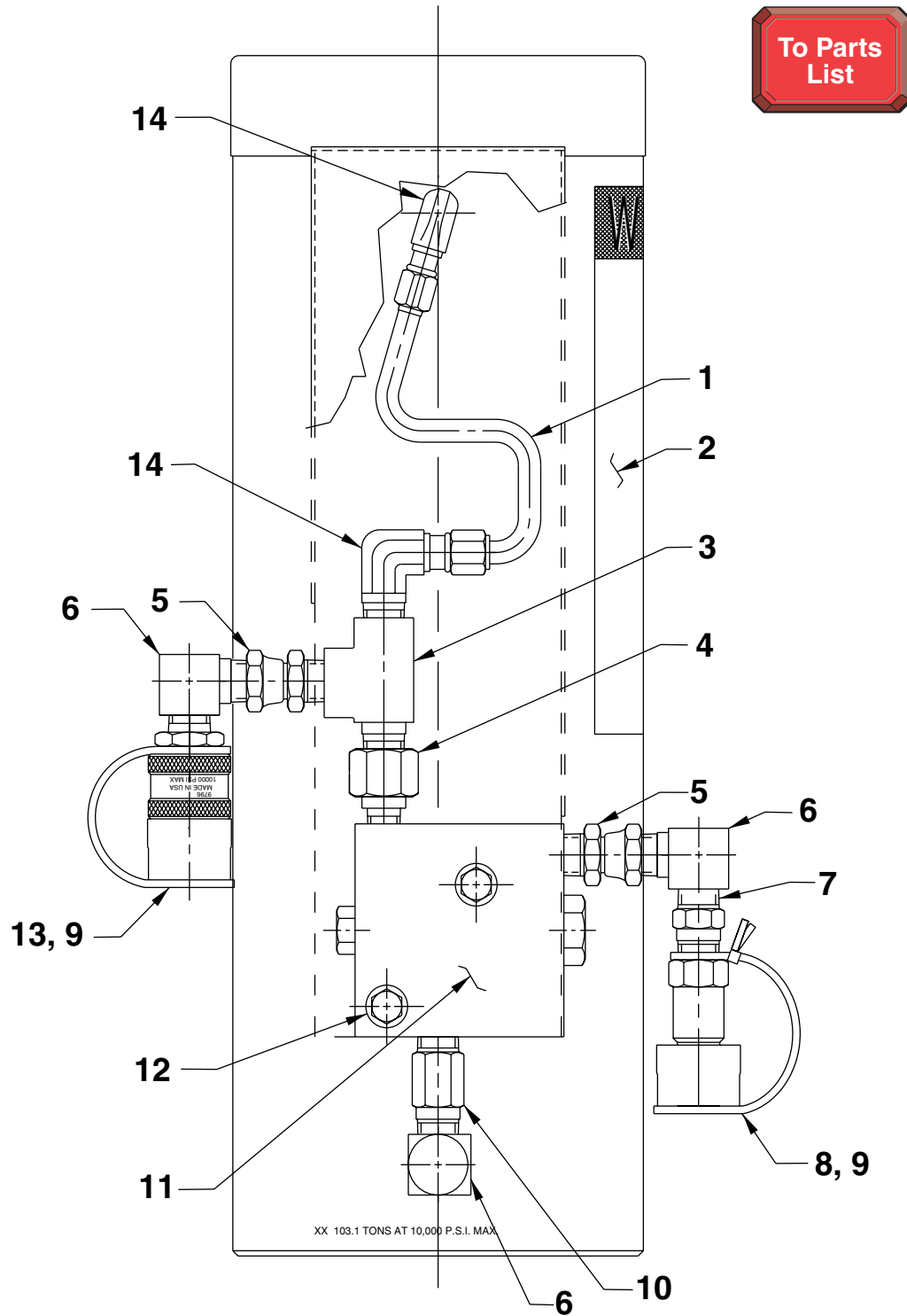
**To Parts
List****JM410 GENERAL ASSEMBLY**

Item No.	Part No.	No. Req'd	Description
1	351848	1	Serrated Cap
2	65298	1	Cylinder Assembly (See sheet 4 of 5)
3	252293	4	Screw (3/4-10 X 3" Lg.; Torque to 200/250 ft. lbs.)
4	65303BK2	1	Cylinder Extension
5	58800BK2	1	Right Side Panel
6	252280	8	Screw (3/4-10 X 1-3/4 Lg.; Torque to 200/250 ft. lbs.)
7	58799BK2	1	Left Side Panel
8	252278	4	Screw (1/2-13 X 1-1/4 Lg.; Torque to 70 ft. lbs.)
9	58831BK2	1	Cylinder Base

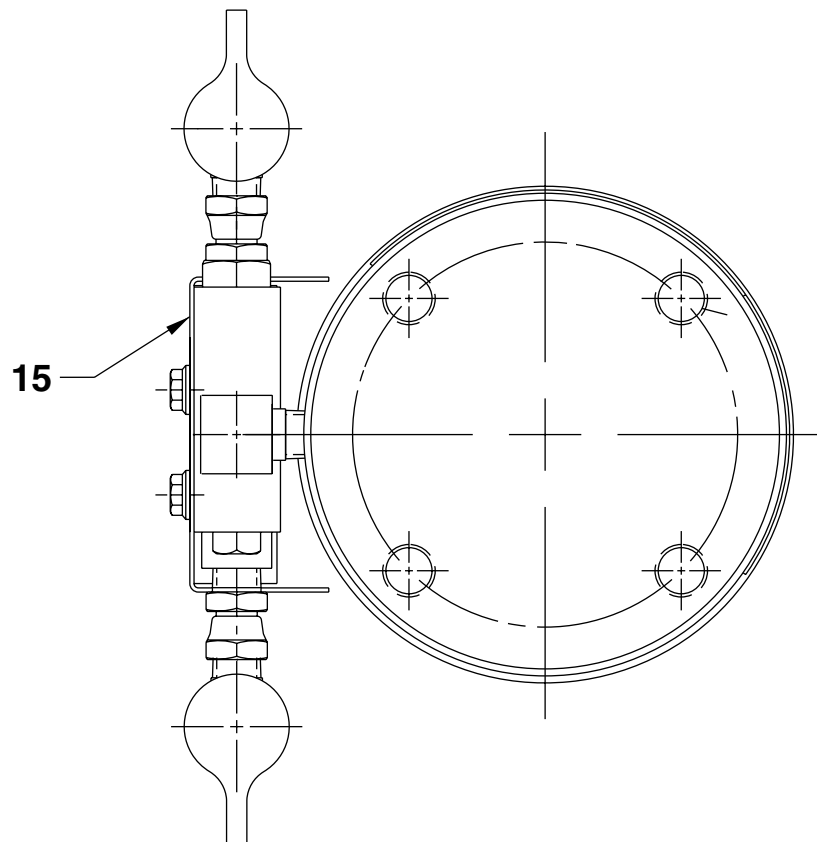


Note: Shaded areas reflect last revision(s) made to this form.

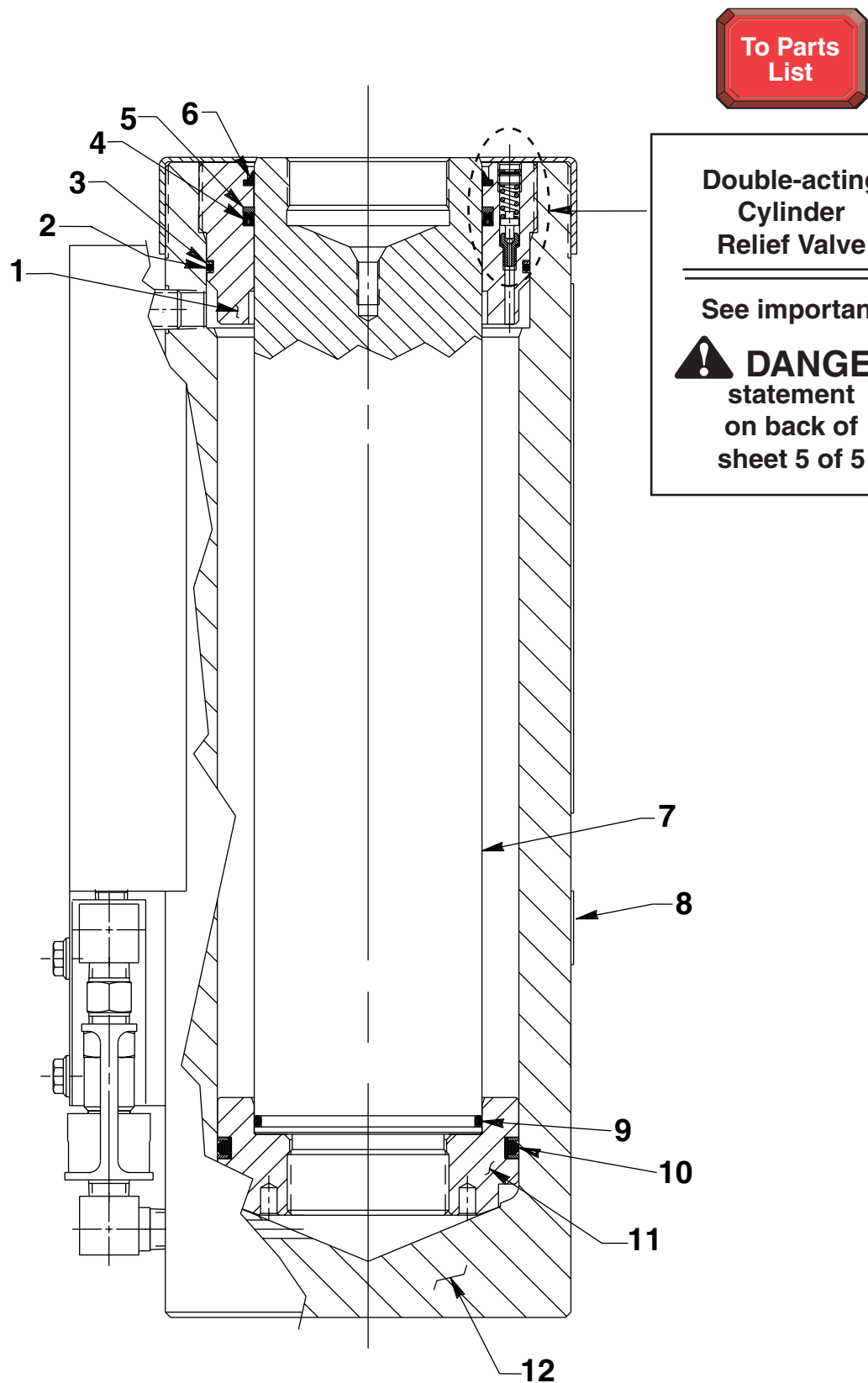
DOUBLE-ACTING CYLINDER ASSEMBLY - EXTERNAL



Item No.	Part No.	No. Req'd	Description
1	252272	1	Oil Tube
2	351349	1	Warning Decal
3	9672	1	Tee Fitting
4	9689	1	Connector Fitting
5	9675	2	Connector Fitting
6	9681	3	Street Elbow Fitting
7	9682	1	Nipple Fitting
8	9793	1	Quick Male Coupler
9	9800	2	Dust Cap
10	9683	1	Nipple Fitting
11	9720	1	Counterbalance Valve (See Form No. 101733)
12	15273	2	Screw (5/16-18 X 1/2 Lg.)
13	9792	1	Quick Female Coupler
14	10666	2	90° Elbow Fitting
15	421343OR9	1	Shroud



CYLINDER ASSEMBLY - INTERNAL





DANGER: To help avoid possible serious personal injury or death,

- In the event that the cylinder retract port is ever restricted or plugged, a double-acting cylinder relief valve will help prevent excessive pressure from building in the cylinder. DO NOT attempt to adjust or service this relief valve! If oil leakage is detected from this relief valve, discontinue use of the cylinder immediately and contact Power Team Technical Services. Only Power Team Authorized Hydraulic Service Centers should service this relief valve.

Item No.	Part No.	No. Req'd	Description
1	51289	1	Retainer Nut (Torque to 150 ft. lbs. minimum)
2	*10299	1	O-ring (5-1/2 x 5-1/4 x 1/8)
3	*19270	1	Backup Washer (5-1/2 x 5-1/4 x .048)
4	*19178	1	U-cup
5	*19337	1	Backup Washer (4-1/8 x 3-7/8 x .070)
6	*205775	1	Rod Wiper
7	51290	1	Piston Rod
8	202173	1	Trade Name Decal
9	*11924	1	O-ring (3-7/8 x 3-5/8 x 1/8)
10	*19207	1	T-seal
11	43271	1	Piston Head (Use Loctite No. 277 when assembling this piston head to the piston rod [Item #7]. Torque to 200 ft. lbs.)
12	64640	1	Cylinder Body

Parts numbers marked with an asterisk (*) are contained in Repair Kit No. 300006.

